

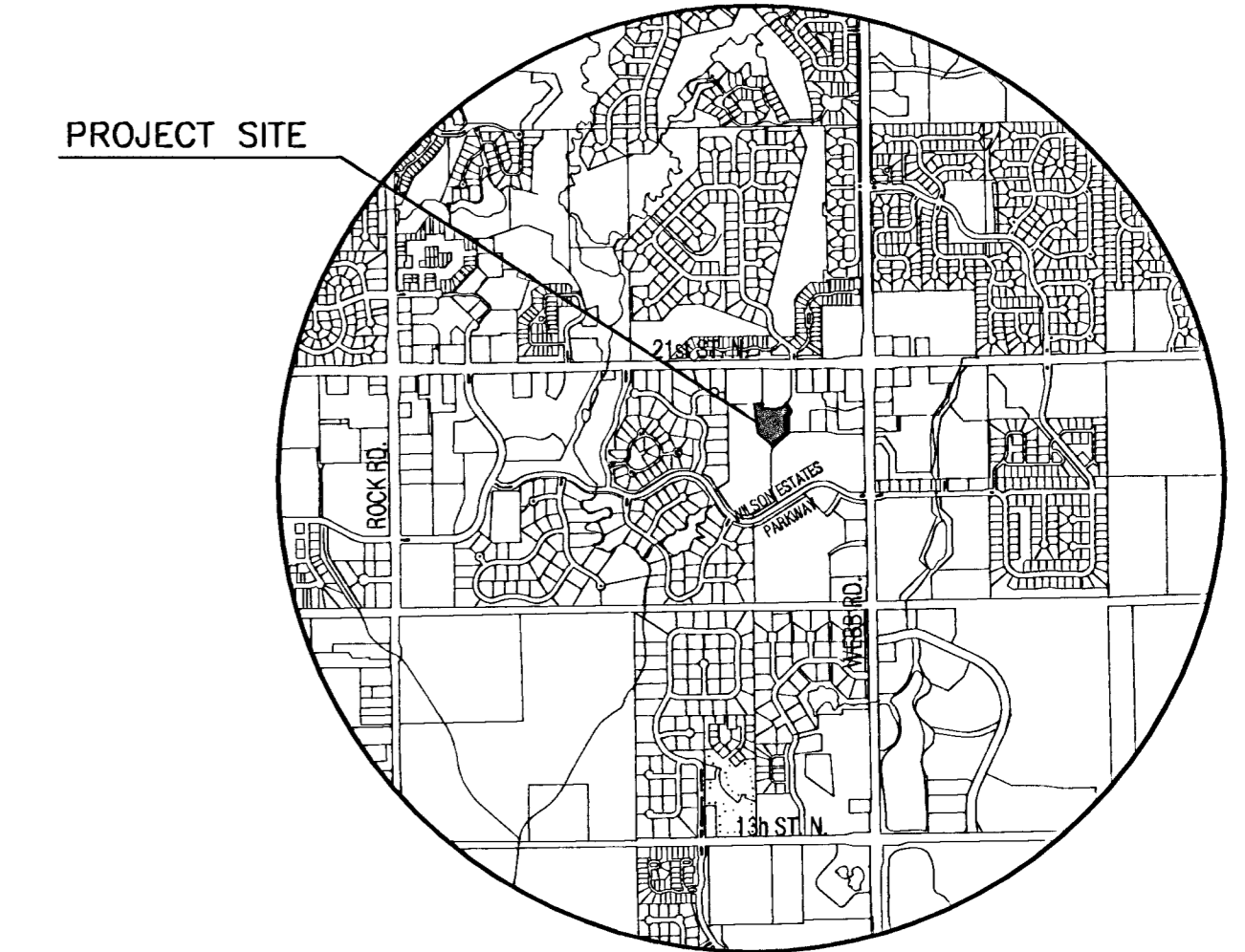
PRIVATE STORM WATER SEWER PLANS FOR
**LOT 5, BLOCK 1, LEGACY PARK
 WILSON LAKES 2ND ADDITION**

PRAIRIE VIEW

PROJECT NO. 1544 PPS

CITY OF WICHITA, KANSAS
 JIM ARMOUR, P.E. - CITY ENGINEER

OCA NO. 607861



LOCATION MAP

GENERAL NOTES

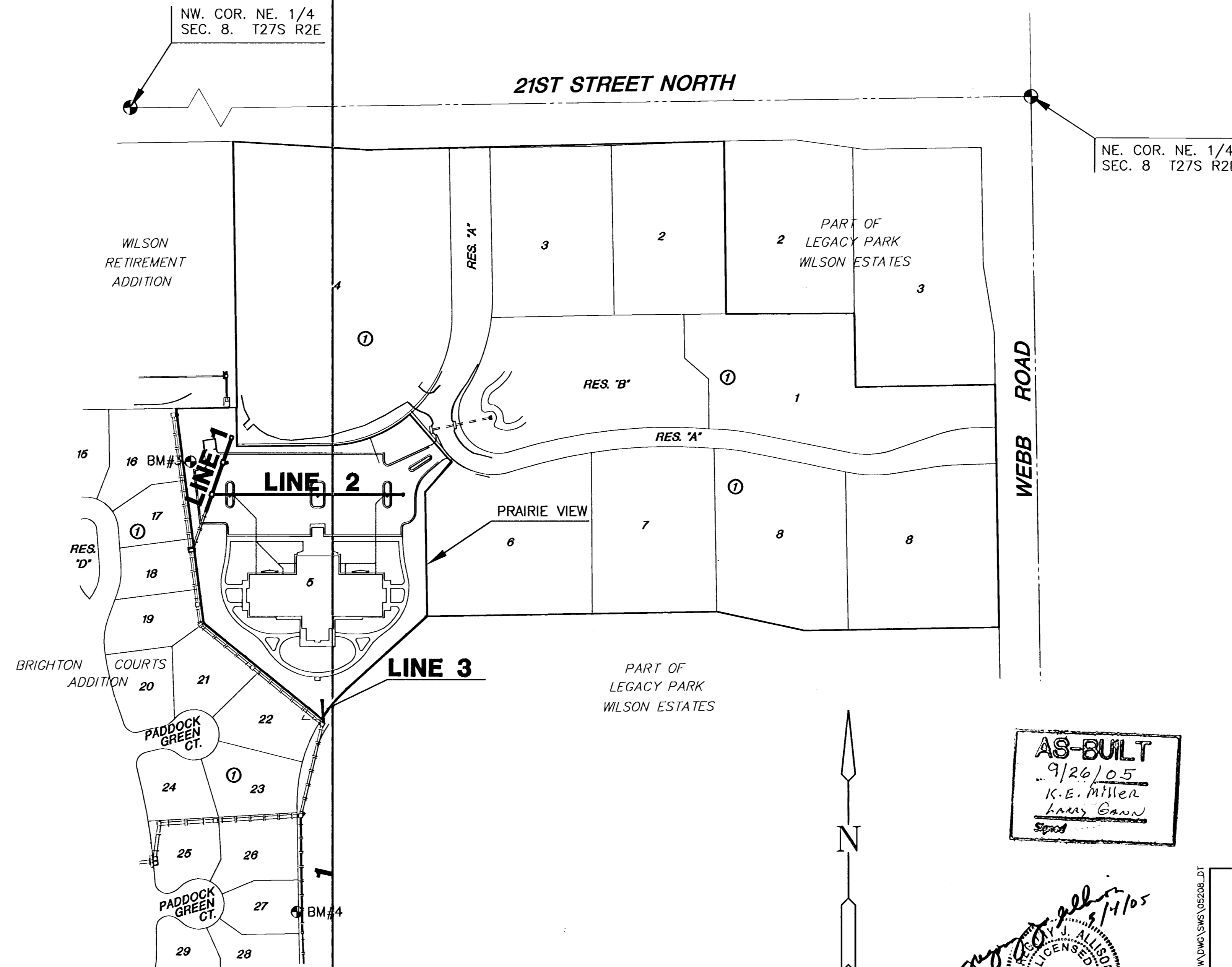
- UNLESS SHOWN OR OTHERWISE STATED ON THESE DRAWINGS, MATERIALS AND CONSTRUCTION SHALL BE IN ACCORDANCE WITH THE CITY OF WICHITA STANDARD SPECIFICATIONS.
- THE TOPS OF INLETS AND MANHOLES AS NOTED ON THE PLANS MAY VARY SO AS TO MEET PROPOSED TOP OF CURB ELEVATIONS OR PAVEMENT ELEVATIONS. THE FIELD ENGINEER SHALL LOCATE INLETS AND MANHOLES WITH REFERENCE TO PROPOSED PAVING PLANS OF THE PERTINENT STREETS.
- ALL CONCRETE SHALL BE STANDARD PAVING MIX UNLESS OTHERWISE NOTED.
- THE CONTRACTOR SHALL BE RESPONSIBLE FOR PRESERVING PROPERTY IRONS. THE CONTRACTOR SHALL BE REQUIRED TO RE-ESTABLISH ANY PROPERTY IRONS WHICH ARE DAMAGED OR DESTROYED BY HIS CONSTRUCTION OPERATIONS. SUCH IRONS SHALL BE RE-ESTABLISHED BY A LICENSED LAND SURVEYOR IN ACCORDANCE WITH STATE LAWS.
- TREES TO BE REMOVED ARE MARKED . ALL TREES WHICH IN THE OPINION OF THE FIELD ENGINEER CAN BE SAVED, SHALL BE SAVED.
- CONTRACTOR SHALL NOTIFY UTILITY COMPANIES OF CONSTRUCTION SCHEDULING.
- EXISTING UTILITIES AND THEIR LOCATIONS, AS SHOWN ON THE PLANS REPRESENT THE BEST INFORMATION OBTAINABLE FOR DESIGN. LOCATION INFORMATION HAS BEEN OBTAINED FROM THE VARIOUS COMPANIES AND IS EITHER FROM COMPANY UTILITY DRAWINGS OR COMPANY PROVIDED FIELD LOCATIONS. THE PLAN LOCATIONS SHOWN ARE NOT GUARANTEED. ADDITIONAL EXISTING UTILITIES MAY ALSO BE ENCOUNTERED.
- CONTRACTOR WILL BE REQUIRED TO PROVIDE A MINIMUM ADVANCE NOTICE OF SEVENTY-TWO (72) HOURS TO UTILITY COMPANIES TO STARTING ANY EXCAVATION AS FOLLOWS:

KANSAS ONE-CALL 800-344-7233
 OR 687-2470 (LOCAL WICHITA)

THE CONTRACTOR MUST NOTIFY THE FOLLOWING IN CASE OF EMERGENCY:

COX COMMUNICATIONS (CABLE) 262-0661
 WESTAR (ELECTRIC) 261-6512
 KANSAS GAS SERVICE (GAS) 832-3101
 SBC (TELEPHONE) 800-970-8390
 CITY OF WICHITA WATER & SEWER 282-6000
 AQUILA (GAS) 946-0096

- RUBBLE FROM THE REMOVAL OF MISCELLANEOUS STRUCTURES AND EXCESS EXCAVATION WHICH IS TO BE WASTED SHALL BE DISPOSED OF ON SITES TO BE PROVIDED BY THE CONTRACTOR. THESE SITES SHALL BE APPROVED BY THE ENGINEER AS TO SUITABILITY, APPEARANCE AND SITE LOCATION. LOCATIONS THAT, IN THE OPINION OF THE ENGINEER, WILL LEAVE AN UNSIGHTLY APPEARANCE WILL NOT BE APPROVED. ALL DISPOSAL SITES MUST BE APPROVED BY THE KANSAS DEPARTMENT OF HEALTH AND ENVIRONMENT. MATERIAL EITHER STOCKPILED OR DISPOSED OF IN A FLOOD PLAIN WOULD REQUIRE A KANSAS STATE BOARD OF AGRICULTURE PERMIT. ANY MATERIAL DUMPED IN WATERS OF THE UNITED STATES OR WETLANDS IS SUBJECT TO U.S. CORPS OF ENGINEERS PERMITTING REGULATIONS. ANY MATERIAL BURIED OR STOCKPILED BEYOND APPROVED CONSTRUCTION LIMITS WOULD REQUIRE ADDITIONAL ARCHAEOLOGICAL INVESTIGATIONS UNLESS BURIED IN A PREVIOUSLY APPROVED BORROW LOCATION.
- CONTRACTOR SHALL RESEED AND MULCH ALL DISTURBED AREAS. COST SHALL BE CONSIDERED SUBSIDIARY TO SITE RESTORATION.



AS-BUILT
 9/26/05
 K.E. Miller
 Larry Gann
 Spool



SCALE: 1" = 100'

INDEX TO DRAWINGS

SHEET NO.	DESCRIPTION
1	TITLE SHEET
2-5	DETAILS
6	LINE 1
7	LINE 2 & 3
8-11	BMP DETAILS

BENCHMARKS

- BM#1- "□" CUT ON THE S END OF THE E HEADWALL OF RCB, 101' S & 20' E OF THE SOUTHERNMOST COR. COR. OF LOT 27, BLK 1, WILSON FARMS 3RD ADD. ELEV = 189.38
- BM#2- RR SPIKE IN THE EAST FACE OF A 21" TREE IN THE HEDGEROW NEAR THE MID-POINT OF THE WEST LINE OF BRIGHTON COURTS ADDITION. ELEV = 200.85
- BM#3- "□" CUT ON TOP OF E CURB OF DRIVE INTO ALTERRA RETIREMENT HOME, 72' N & 47' W OF THE SE COR. OF WILSON RETIREMENT ADDITION. ELEV = 204.12
- BM#4- "□" CUT TOP OF RCB END SECTION AT SE COR. OF LOT 23, BLK 1, BRIGHTON COURTS ADDITION. ELEV = 197.07
- BM#5- "□" CUT TOP OF CURB ON THE N SIDE OF WILSON ESTATES PARKWAY AT SE COR. OF BRIGHTON COURTS ADDITION. ELEV = 197.07

**APPROVED AS NOTED
 BY CITY ENGINEER OF WICHITA,**

Storm Water VRH 5/4/035
 (Public Works)

NOTE TO CONTRACTORS

Public Property:
 Inspection and supervision of testing is to be provided by a Licensed Consulting Engineering Firm under contract with the Owner/Developer. Said inspection to be in accordance with the City of Wichita Standard Construction Engineering Practices and certified by a Licensed Professional Engineer. No work shall be performed in dedicated easements or public right-of way by the Contractor without such inspection, nor shall any work be commenced without written authorization by the City Engineer. All Construction and Materials shall comply with the City of Wichita Specifications and Standards (on file and available in the City Engineer's Office).

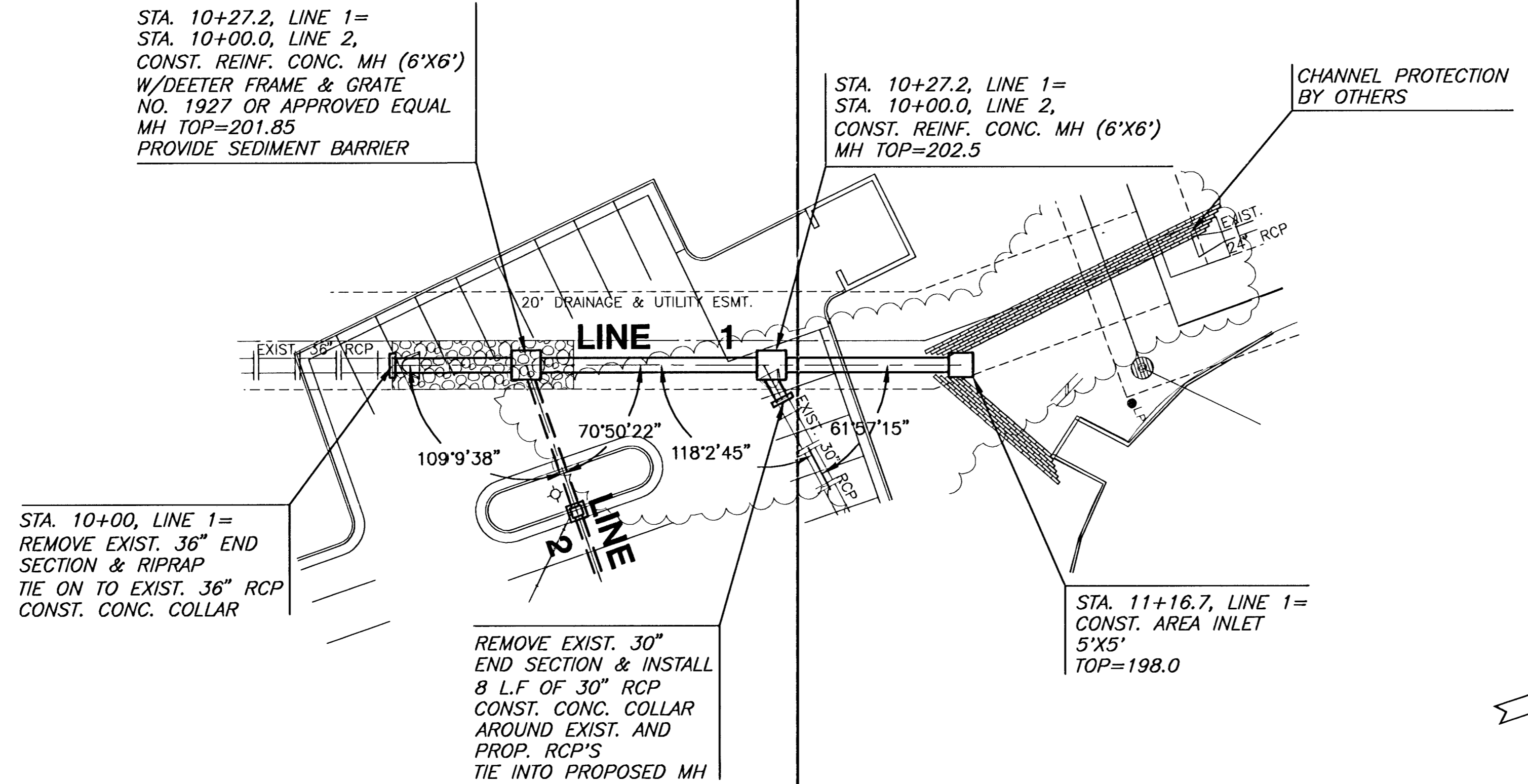
H:\CIVIL\02260\PRV\PRVIE VIEW DWG\SWIS\05208.DT

MKEC ENGINEERING CONSULTANTS
 411 N. WEBB ROAD
 WICHITA, KS. 67206
 316-264-9600

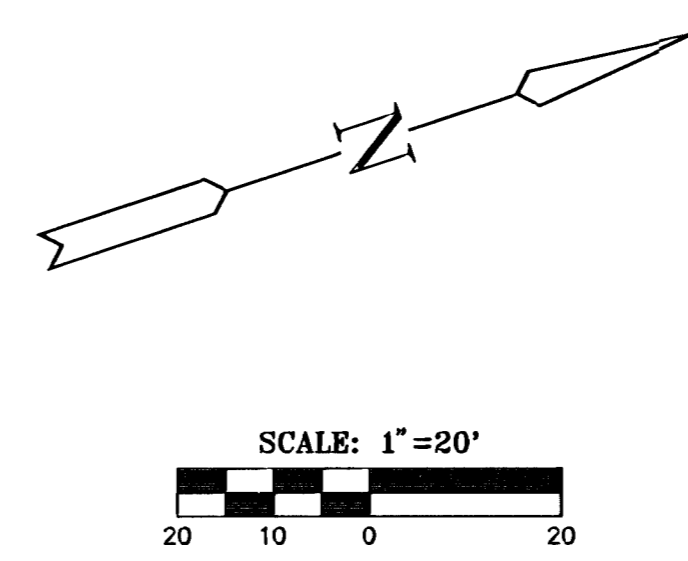
PRAIRIE VIEW
 PROJECT NAME

STORM SEWER PLANS
 SHEET TITLE

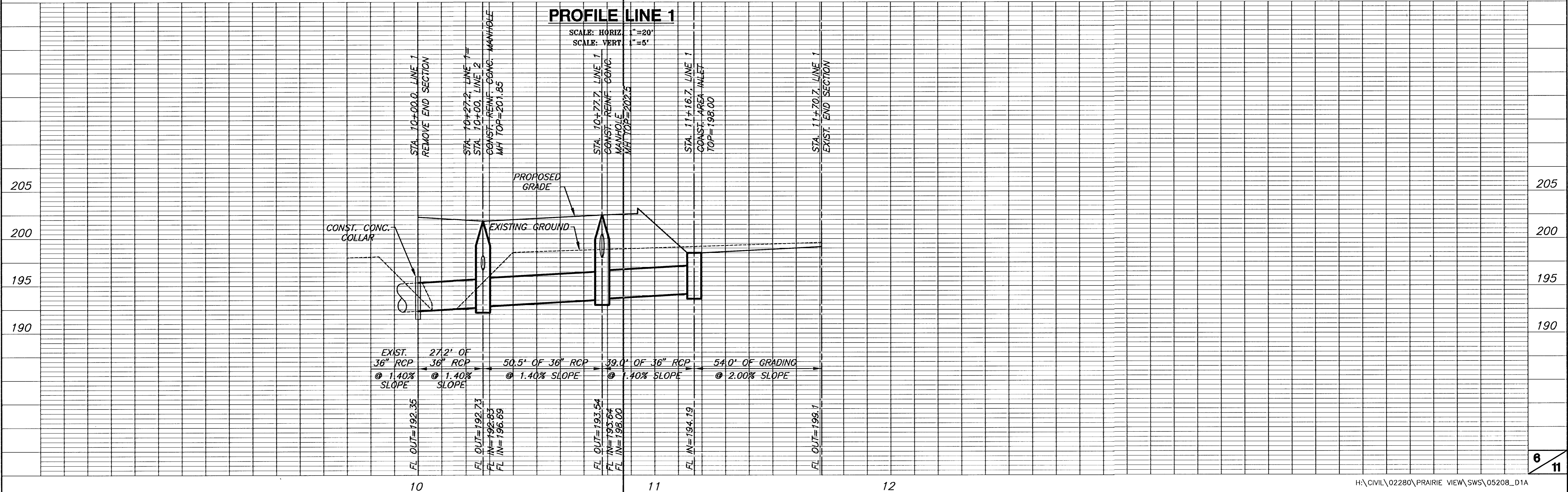
DFL DESIGN BY:	KKL DRAWN BY:	GJA CHECKED BY:
APRIL 2005 DATE	05208_DT JOB NO.	1 / 11 SHEET/OF



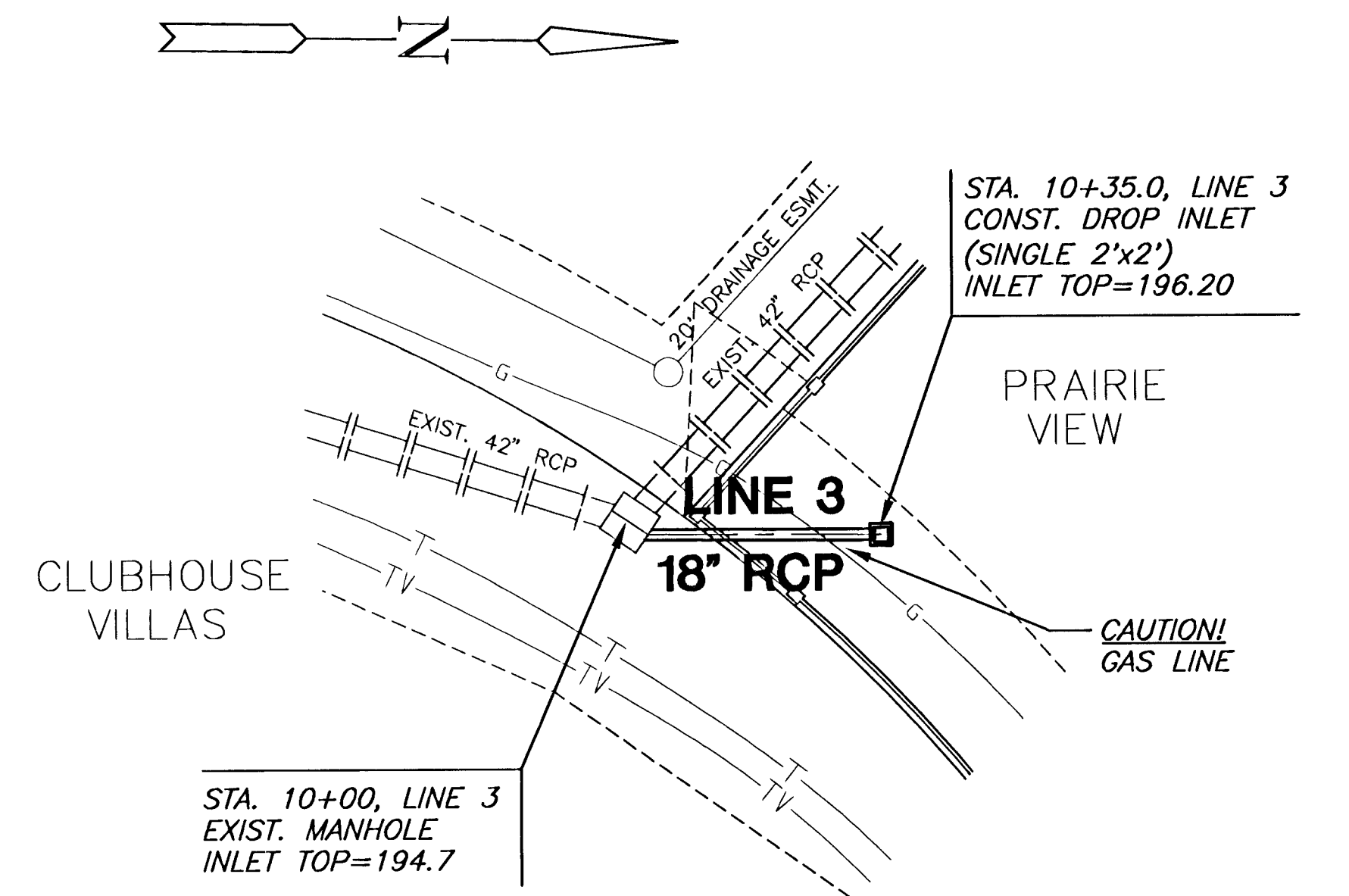
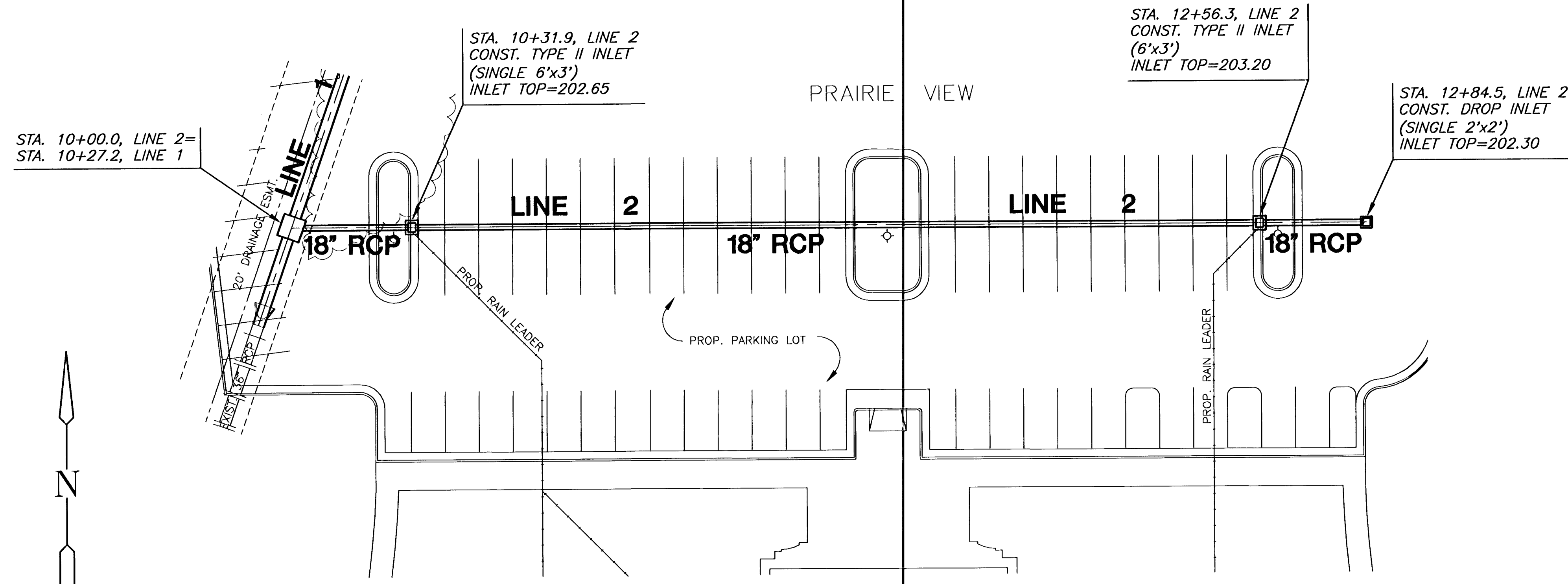
PLAN LINE 1



PROFILE LINE 1



**PRAIRIE VIEW
STORM WATER SEWER**



PLAN LINE 2
SCALE: 1"=20'

PLAN LINE 3

