

# PRIVATE STORM SEWER SYSTEM

## TO SERVE LOT 1, BLOCK 1 OF

### MIDCONTINENT INDUSTRIAL PARK II

#### PRIVATE PROJECT NUMBER 1549 PPS (607861)

#### INDEX OF SHEETS

1. TITLE SHEET
2. STORM SEWER PLAN & PROFILE
3. EROSION CONTROL PLAN
- 4-5. EROSION CONTROL DETAILS
6. POND PLAN
- 7-8. STANDARD DETAILS

#### BENCHMARK

N. RIM OF SAN. SEWER MANHOLE, APPROX. 248' NORTH & 20' EAST OF THE S.E. CORNER OF LOT 1, BLK. B, MID-CONTINENT INDUSTRIAL PARK II. ELEV. = 1333.90 CITY DATUM.

#### GENERAL NOTES

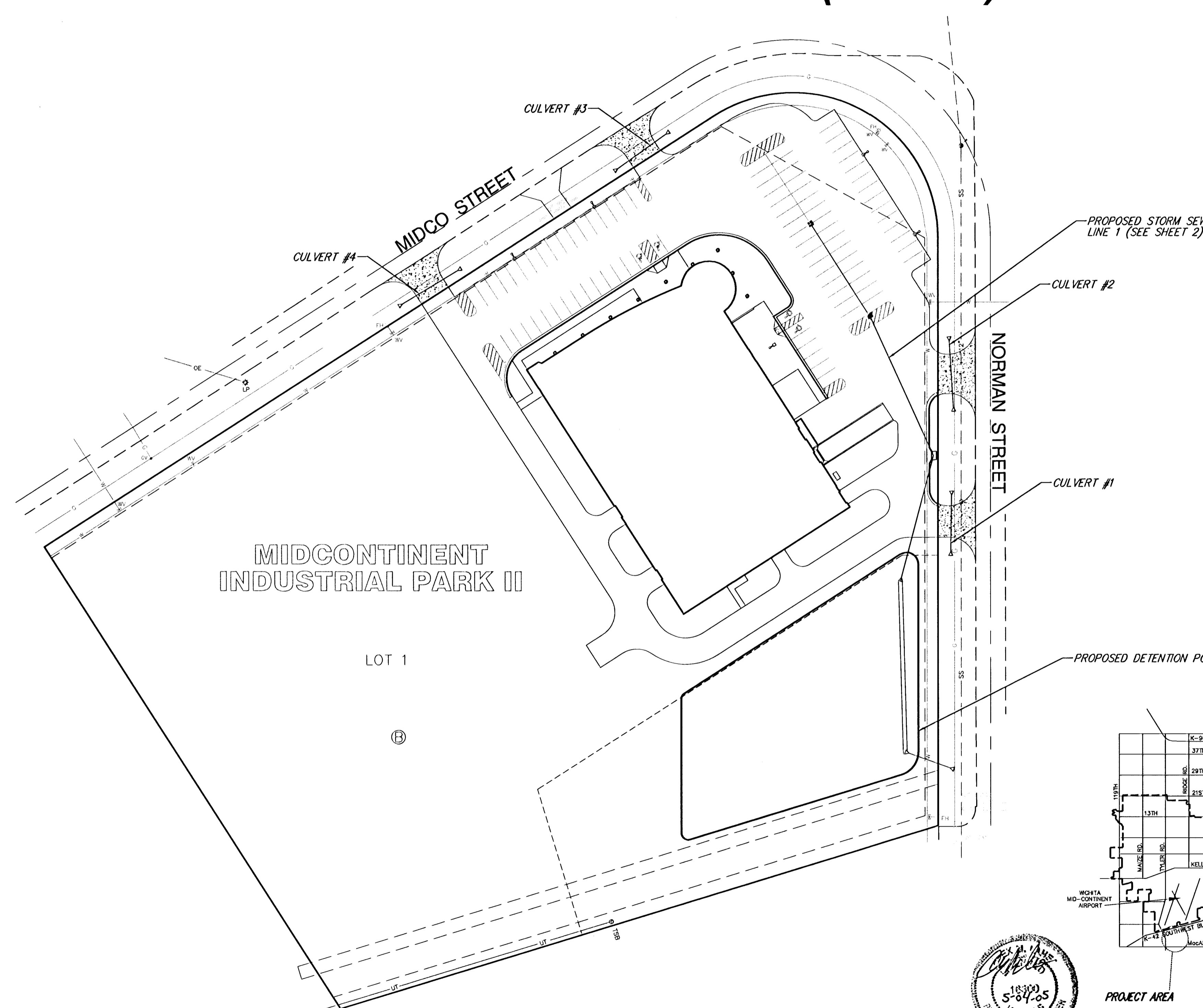
1. Contractor will be required to provide a minimum advance notice of forty-eight (48) hours to utility companies prior to starting any excavation as follows:

Kansas One-Call 687-2470

The Contractor must notify the following in case of an emergency:

Cox Communications	262-0661
Kansas Gas Service	383-8600
Westar	383-8600
Aquila Energy	1-800-303-0357
SBC	1-800-286-8313
City of Wichita Water Department	262-6000
City of Wichita Sewer Maintenance	262-6000

2. Existing utilities and their location, as shown on the plans, represent the best information obtainable for design. Location information has been obtained from the various utility companies and is either from company record drawings or company-provided field locations. The Contractor will be required to work around existing utilities within the right-of-way which do not conflict with proposed construction.
3. Any roof drain connection into the storm sewer system will require a permit from OCL.
4. This project is located within the limits of a larger project which will include building construction. The General Contractor for the project will submit a Storm Water Pollution Prevention Plan for the entire project prior to beginning any work on this project.
5. This project is to be constructed in accordance with City of Wichita Standard Specifications for the Construction of City Projects, and Policy on Construction of Public Works Improvements by Private Contract.
6. No work shall begin on this project before required bonds are submitted to the City of Wichita, and the project inspector has been notified.
7. All areas of public R/W disturbed by construction of this project are to be restored in accordance with Administrative Regulation AR 78 of the City of Wichita.
8. All areas disturbed by construction activities are to be seeded, mulched and fertilized.



APPROVED AS NOTED  
BY CITY ENGINEER OF WICHITA

Sanitary Sewers \_\_\_\_\_

Storm Sewers VRH 5/4/05

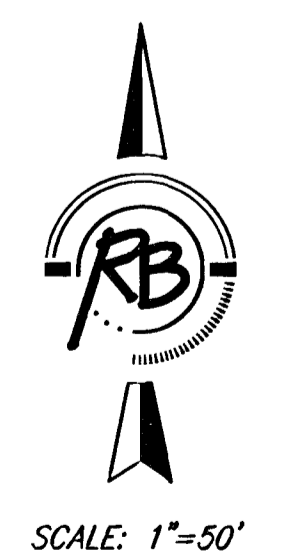
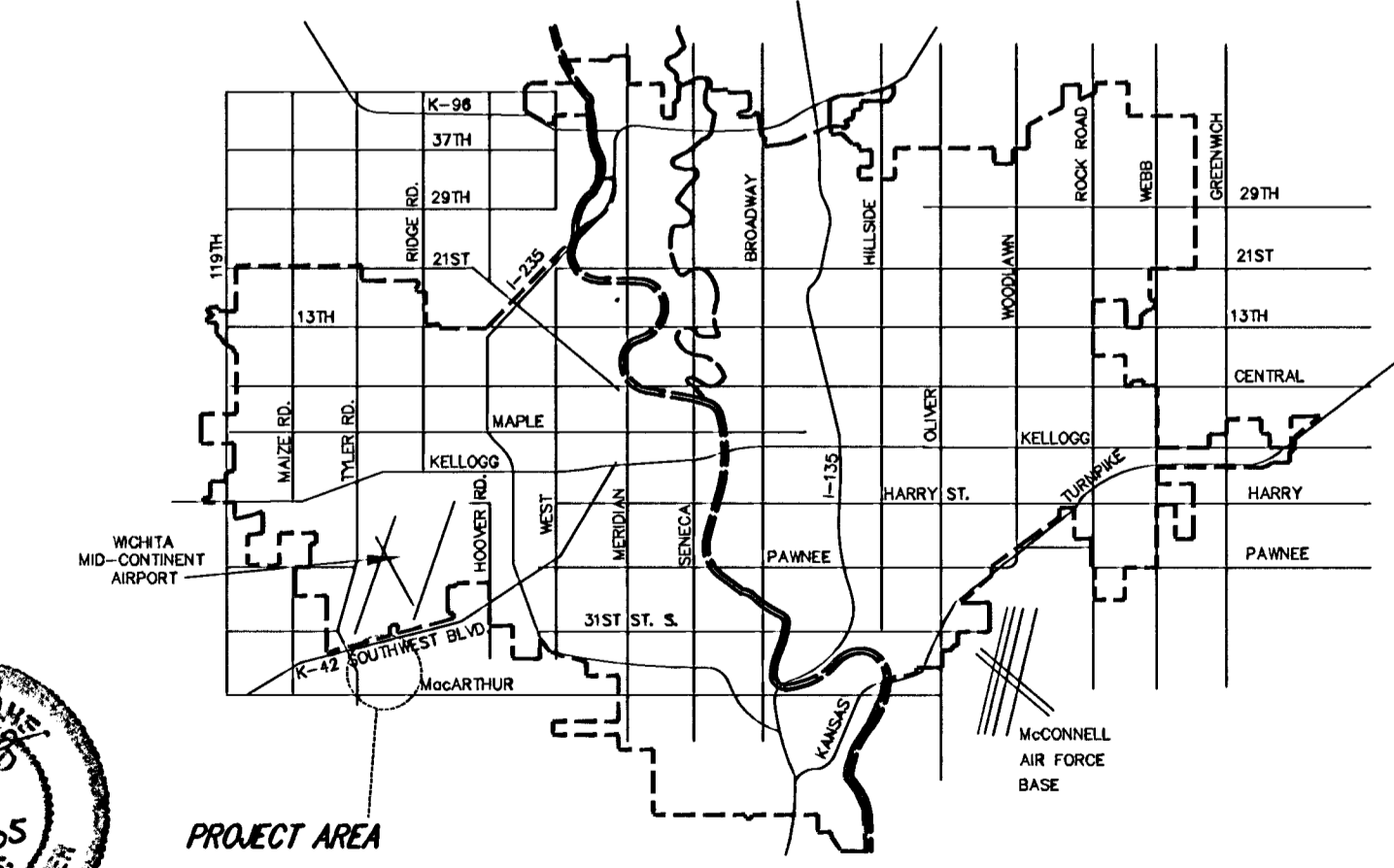
Driveway Approaches \_\_\_\_\_

Water Mains \_\_\_\_\_

Paving \_\_\_\_\_

NOTE TO CONTRACTORS

Inspection and testing for this project are to be provided by a Licensed Consulting Engineering Firm under contract with the Owner/Developer. Said inspection to be in accordance with the City of Wichita standard construction engineering practices and certified by a Licensed Professional Engineer. No work shall be performed in dedicated easements or public right-of-way by the Contractor without such inspection, nor shall any work be commenced without written authorization by the City Engineer.



SCALE: 1"=50'

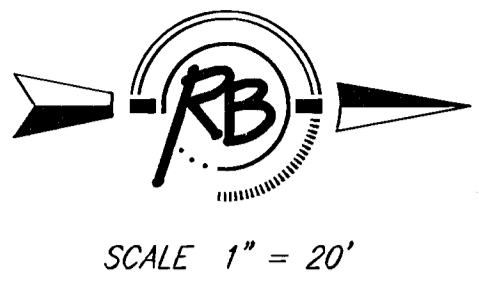
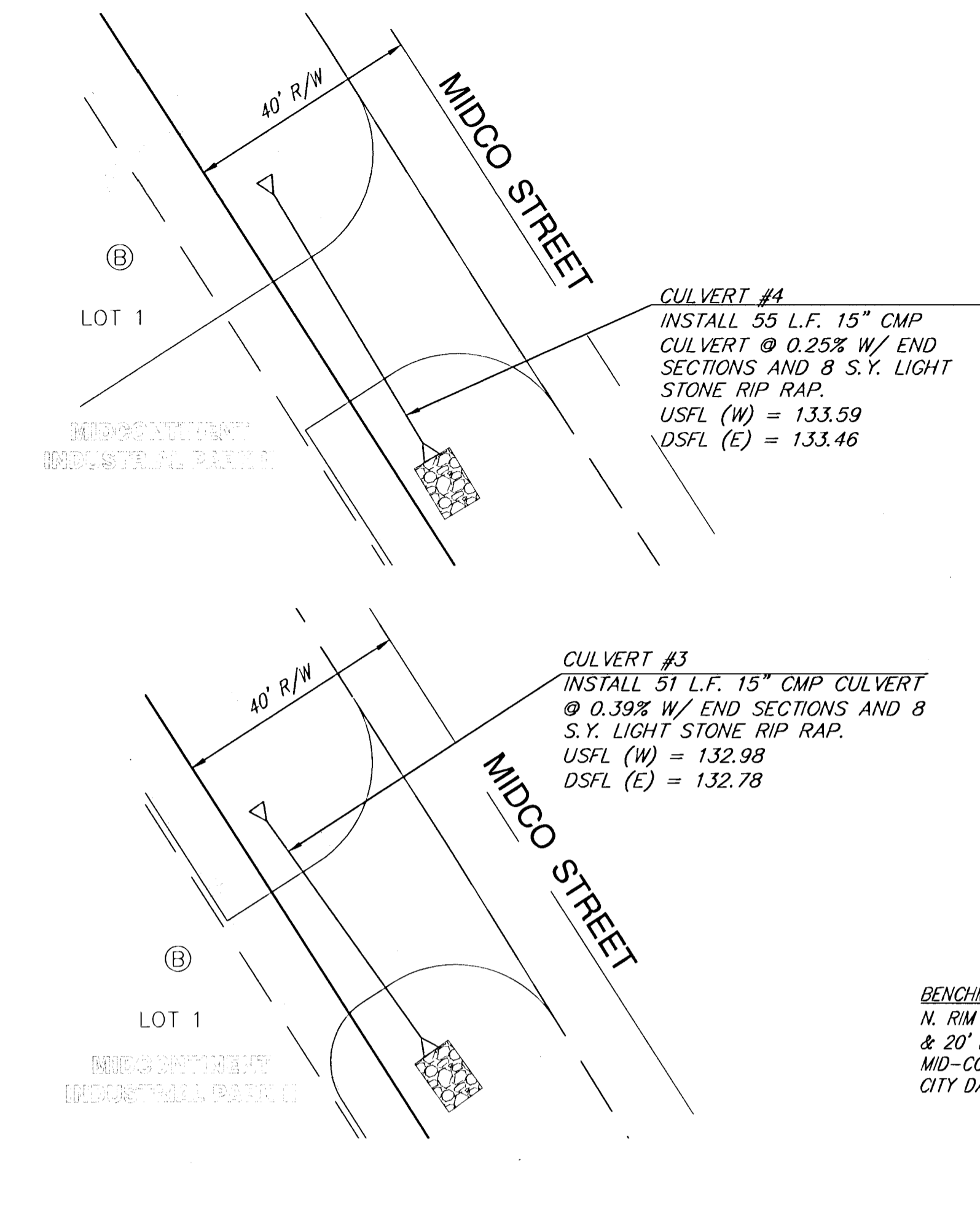
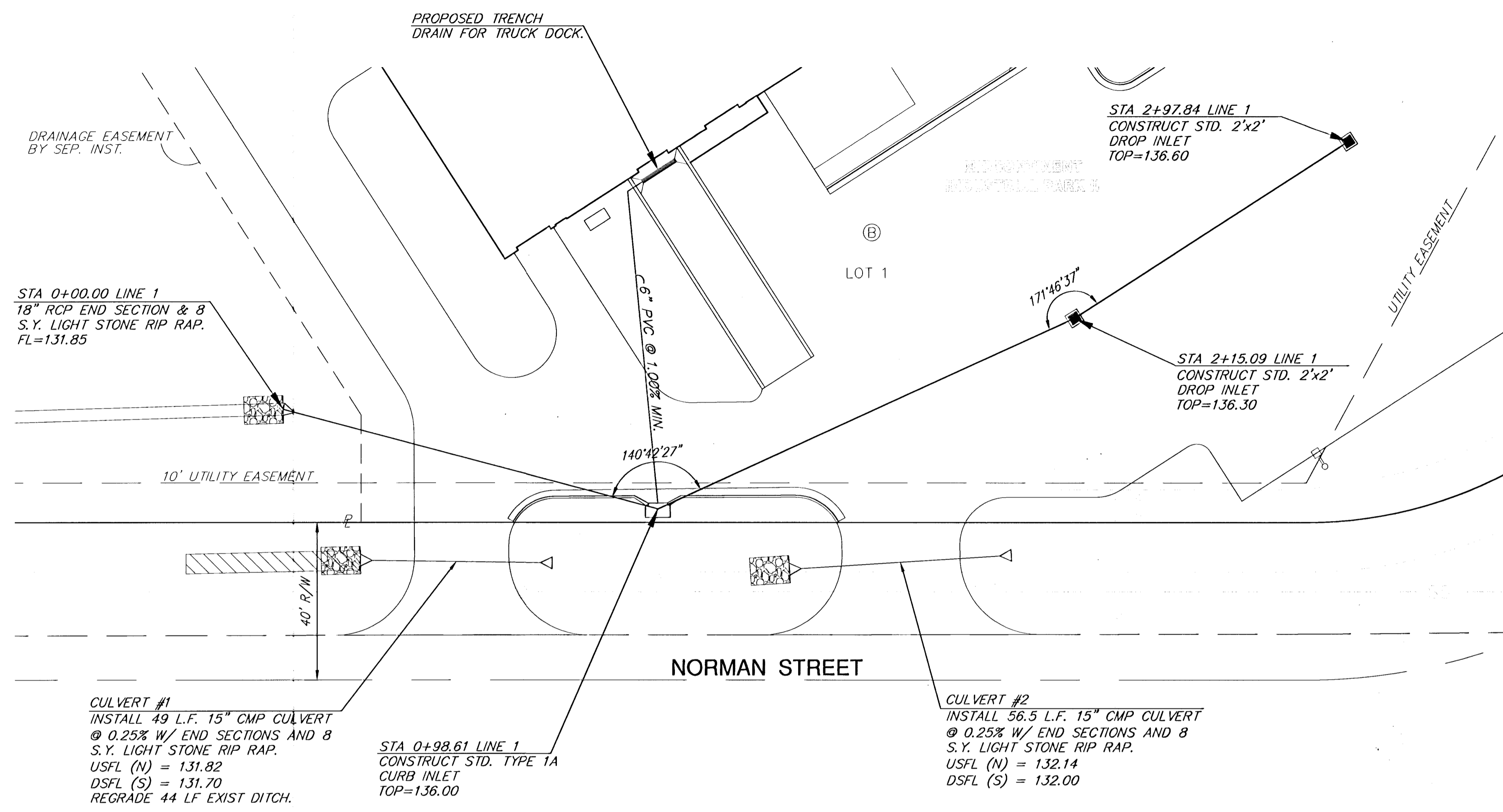
**CITY OF WICHITA, KANSAS**  
**JAMES L. ARMOUR, P.E. - ACTING CITY ENGINEER**



**Ruggles & Bohm, P.A.**  
 Engineering, Surveying, Land Planning  
 924 North Main (316) 264-8008  
 Wichita, Kansas 67203 (316) 264-4621 fax  
 www.rbkansas.com E-mail: info@rbkansas.com

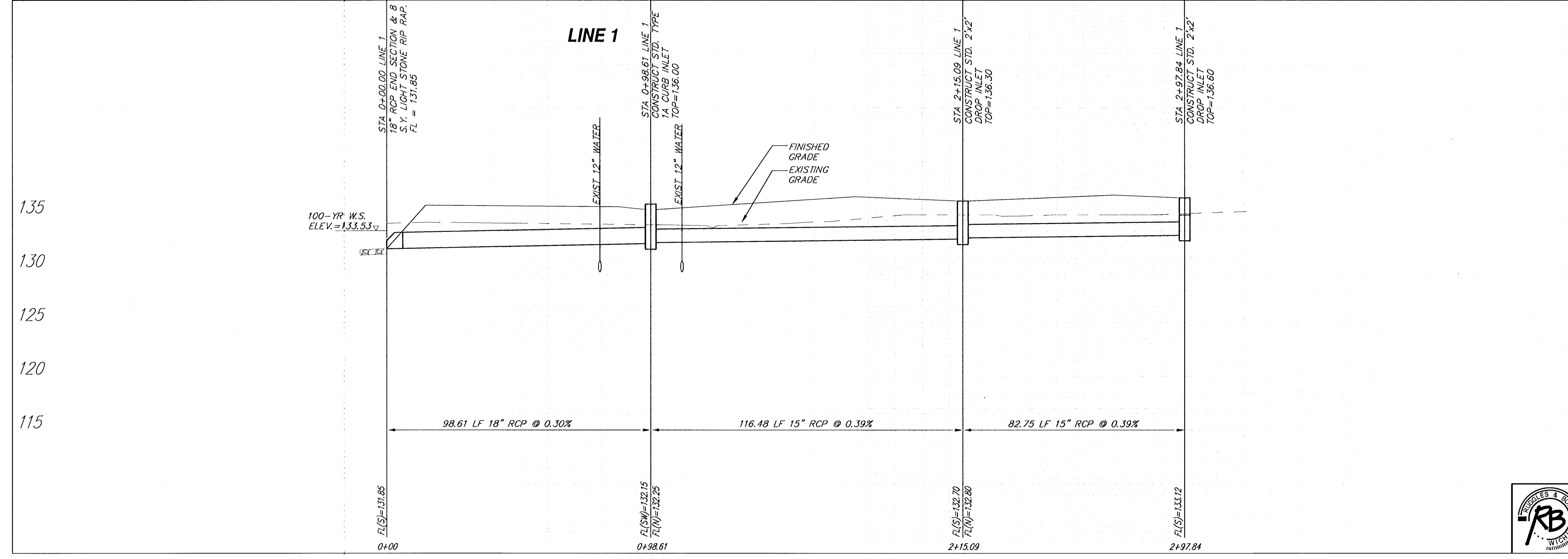
2705E

14 02 13 09



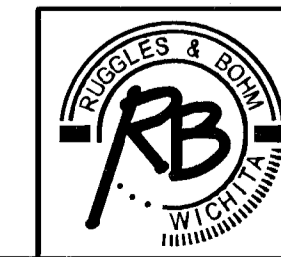
**BENCHMARK**  
 N. RIM OF SAN. SEWER MANHOLE, APPROX. 248' NORTH  
 & 20' EAST OF THE S.E. CORNER OF LOT 1, BLK. B,  
 MID-CONTINENT INDUSTRIAL PARK II. ELEV. = 133.90  
 CITY DATUM.

**NOTE:** CONTRACTOR TO VERIFY  
 LOCATION AND DEPTH OF ALL  
 UTILITIES PRIOR TO  
 CONSTRUCTION.



**SCALE**  
 HORZ. 1" = 20"  
 VERT. 1" = 5'

PROJECT NUMBER 1549 PPS	DESIGN AML UTILITY	DRAWN AML	REVISION DATE
DRAWING FILE SMS Cont[redacted]	UTILITY	DATE Sept. 15, 2004	REVIEW
<b>MID-CONTINENT INDUSTRIAL PARK II</b>			
<b>Storm Sewer Profile</b>			
<b>SEDGWICK COUNTY, KANSAS</b>			
PROJECT NUMBER 1549 PPS	DESIGN AML UTILITY	DRAWN AML	REVISION DATE
DRAWING FILE SMS Cont[redacted]	UTILITY	DATE Sept. 15, 2004	REVIEW
<b>MID-CONTINENT INDUSTRIAL PARK II</b>			
<b>Storm Sewer Profile</b>			
<b>SEDGWICK COUNTY, KANSAS</b>			



**Ruggles & Bohm, P.A.**  
 Engineering, Surveying, Land Planning  
 924 North Main  
 Wichita, Kansas 67203  
 www.rbkansas.com  
 (316) 264-8008  
 (316) 264-4621 fax  
 E-mail: info@rbkansas.com

RB JOB  
2613E  
SHEET  
2  
OF  
8