

# PRIVATE STORM SEWER SYSTEM TO SERVE LOT 23 THRU 37 OF KELLOGG TERRACE FOR SEDGWICK COUNTY JUVENILE DETENTION CENTER PRIVATE PROJECT NUMBER 1568 PPS (607861)

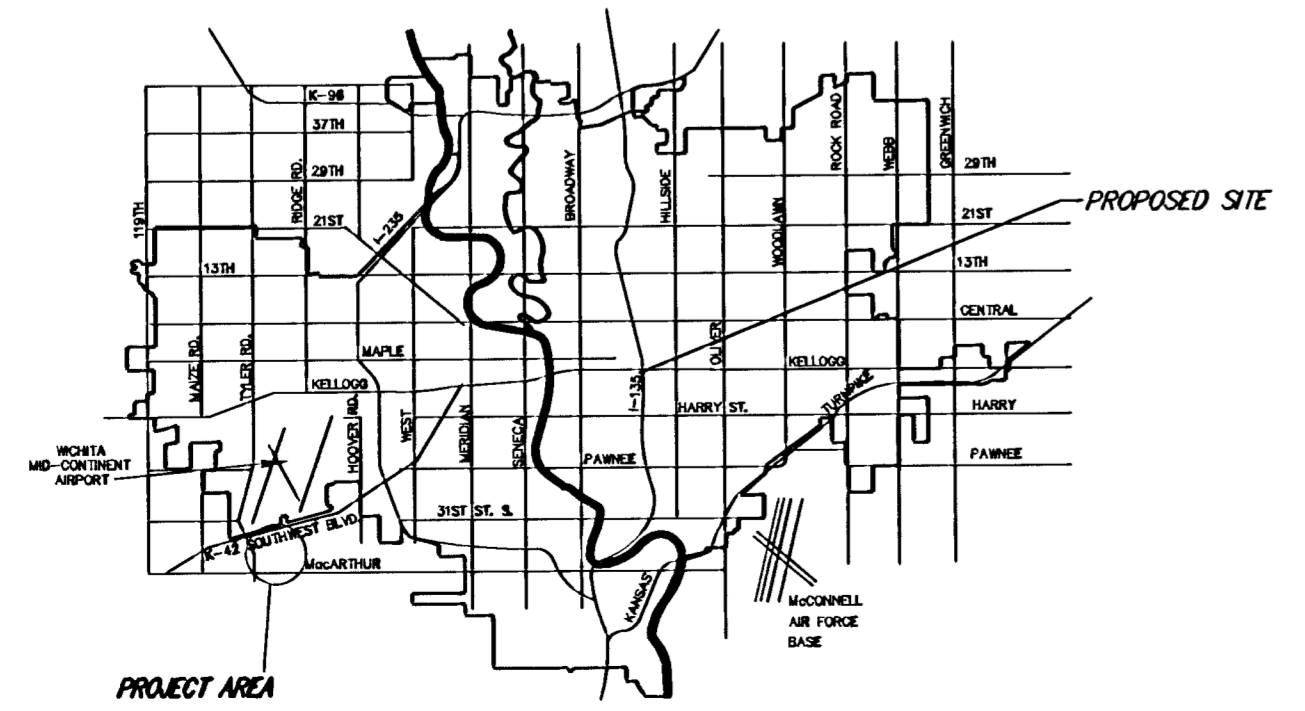
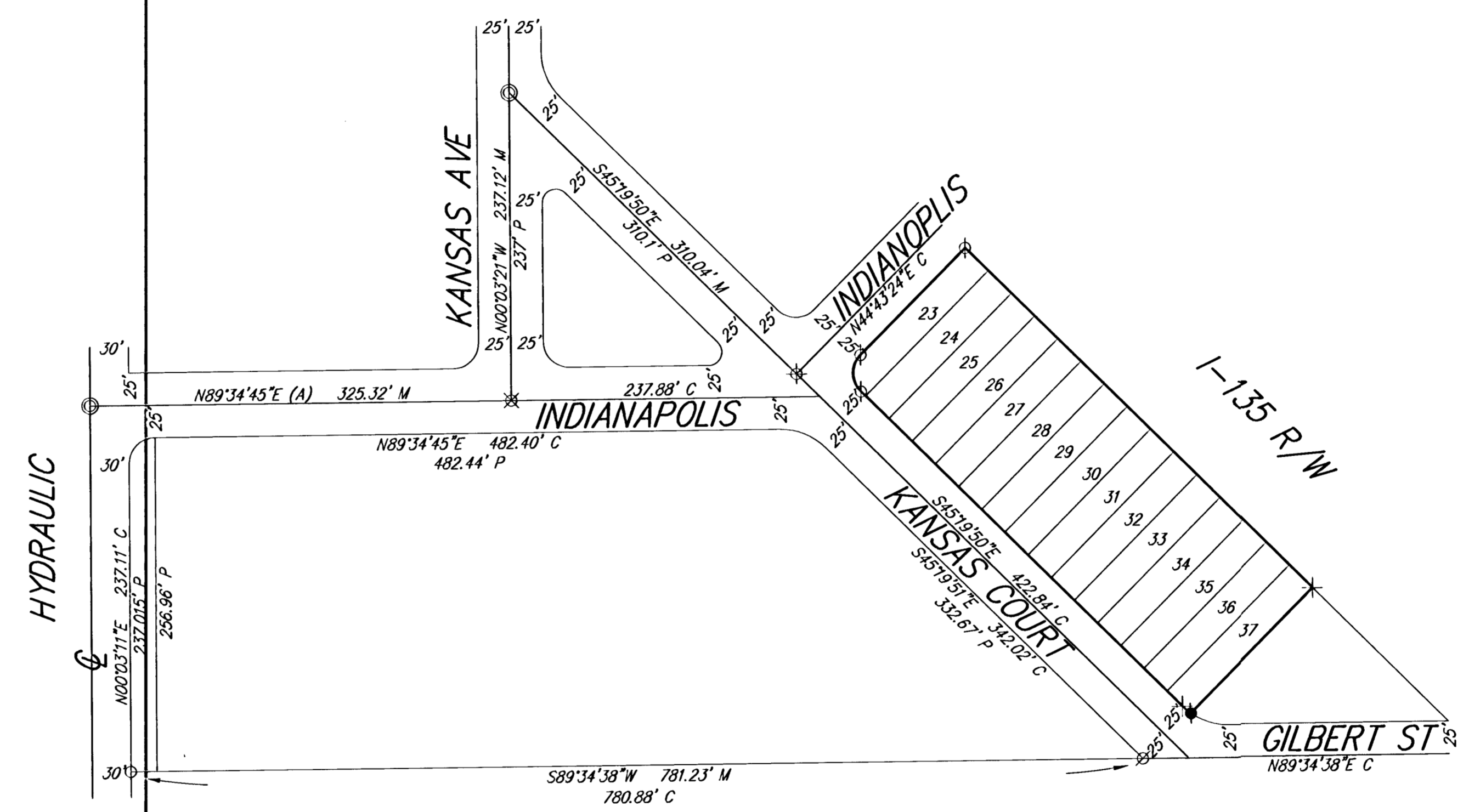
### GENERAL NOTES

1. Contractor will be required to provide a minimum advance notice of forty-eight (48) hours to utility companies prior to starting any excavation as follows:  
  

|                 |          |
|-----------------|----------|
| Kansas One-Call | 687-2470 |
|-----------------|----------|

The Contractor must notify the following in case of an emergency:

|                                   |                |
|-----------------------------------|----------------|
| Cox Communications                | 262-0661       |
| Kansas Gas Service                | 383-8600       |
| Westar                            | 383-8600       |
| Aquila Energy                     | 1-800-303-0357 |
| SBC                               | 1-800-286-8313 |
| City of Wichita Water Department  | 262-6000       |
| City of Wichita Sewer Maintenance | 262-6000       |
2. Existing utilities and their location, as shown on the plans, represent the best information obtainable for design. Location information has been obtained from the various utility companies and is either from company record drawings or company-provided field locations. The Contractor will be required to work around existing utilities within the right-of-way which do not conflict with proposed construction.
3. This project is located within the limits of a larger project which will include building construction. The General Contractor for the project will submit a Storm Water Pollution Prevention Plan for the entire project prior to beginning any work on this project.
4. This project is to be constructed in accordance with City of Wichita Standard Specifications for the Construction of City Projects, and Policy on Construction of Public Works Improvements by Private Contract.
5. No work shall begin on this project before required bonds are submitted to the City of Wichita, and the project inspector has been notified.
6. All areas of public R/W disturbed by construction of this project are to be restored in accordance with Administrative Regulation AR 78 of the City of Wichita.
7. All disturbed areas shall be seeded, mulched and fertilized unless otherwise specified on the landscape plan.



### INDEX OF SHEETS

1. TITLE SHEET
2. PARKING LOT LAYOUT
3. STORM SEWER PLAN & PROFILE
4. EROSION CONTROL PLAN
5. EROSION CONTROL DETAILS
6. TYPE 1 CURB INLET DETAIL
7. TYPE 1A CURB INLET DETAIL
8. DOUBLE DROP INLET DETAILS

### BENCHMARKS

BM #1 Hydraulic and Indianapolis  
 COW Benchmark. R.R. spike in the east face of the power pole at the south east corner of Hydraulic and Indianapolis.  
 City 106.00 MSL 1293.40

APPROVED AS NOTED  
BY CITY ENGINEER OF WICHITA

Sanitary Sewers \_\_\_\_\_

Storm Sewers ACT 7/22/05

Driveway Approaches \_\_\_\_\_

Water Mains \_\_\_\_\_

Paving \_\_\_\_\_

NOTE TO CONTRACTORS

Inspection and testing for this project are to be provided by a Licensed Consulting Engineering Firm under contract with the Owner/Developer. Said inspection to be in accordance with the City of Wichita standard construction engineering practices and certified by a Licensed Professional Engineer. No work shall be performed in dedicated easements or public right-of-way by the Contractor without such inspection, nor shall any work be commenced without written authorization by the City Engineer.

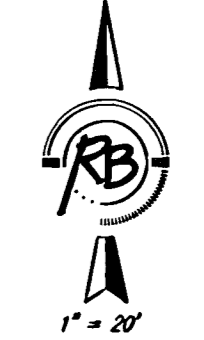
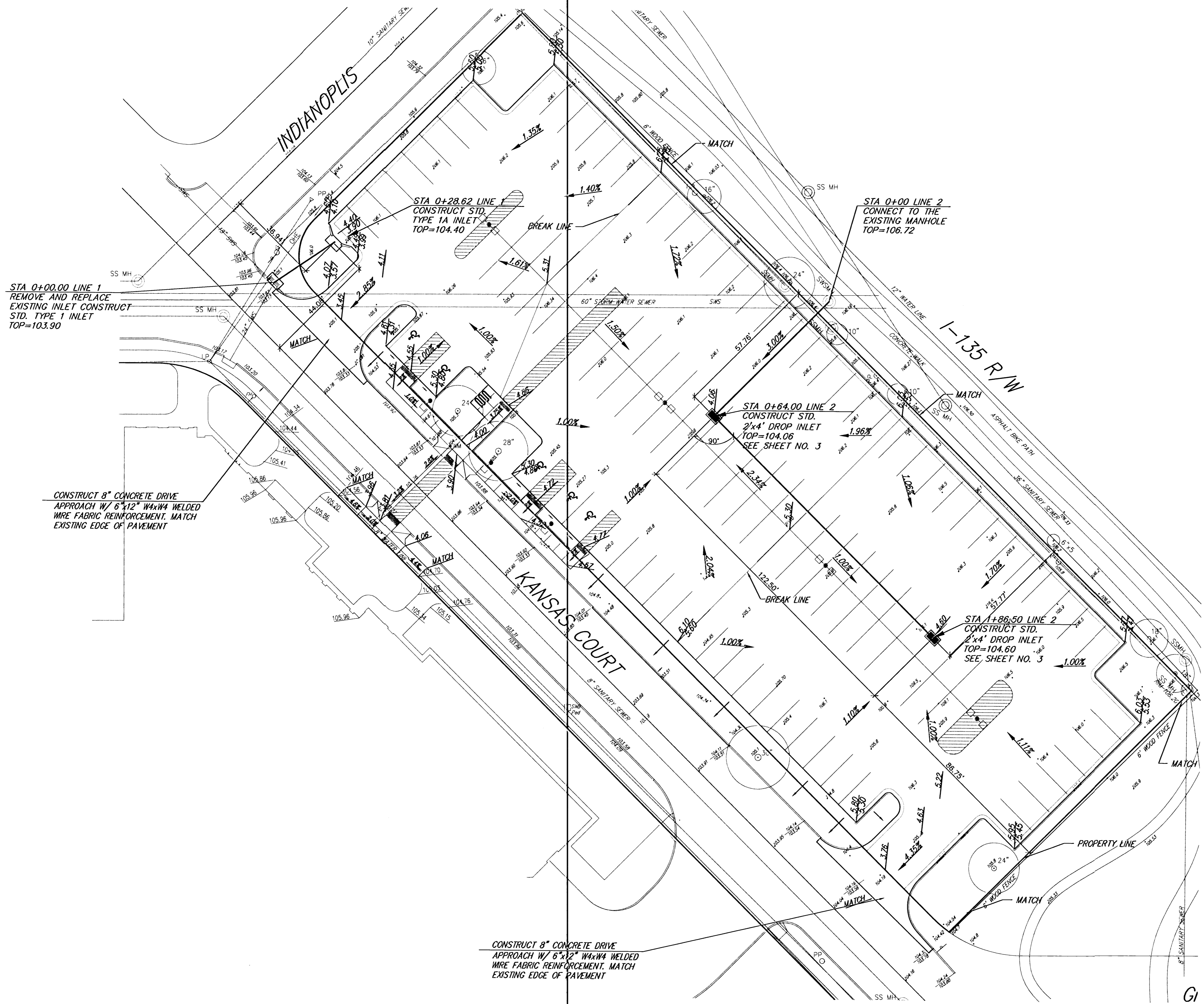


As-built 11-22-05 UCR

**CITY OF WICHITA, KANSAS**  
**JAMES L. ARMOUR, P.E., CITY ENGINEER**

**Ruggles & Bohm, P.A.**  
 Engineering, Surveying, Land Planning

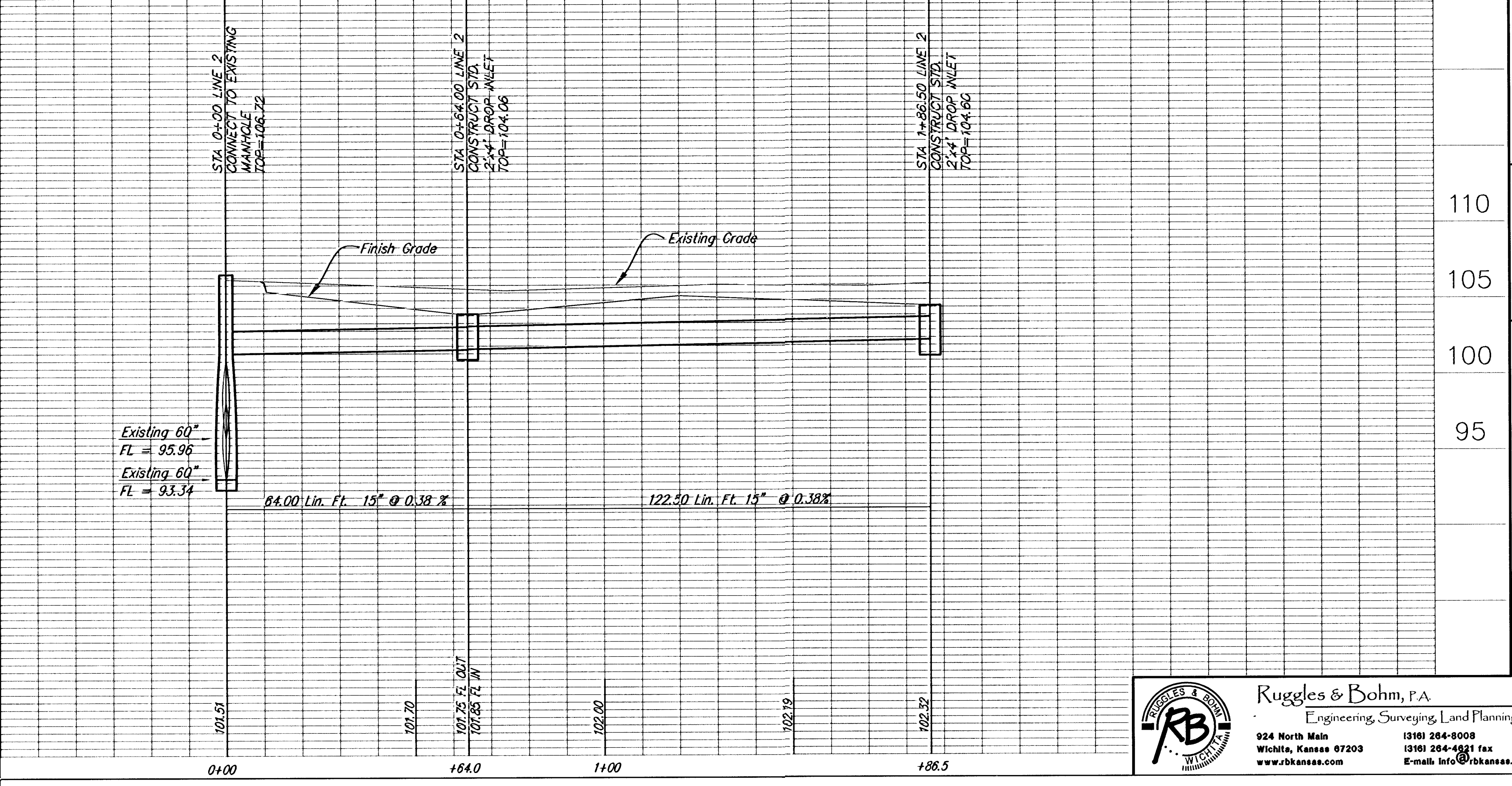
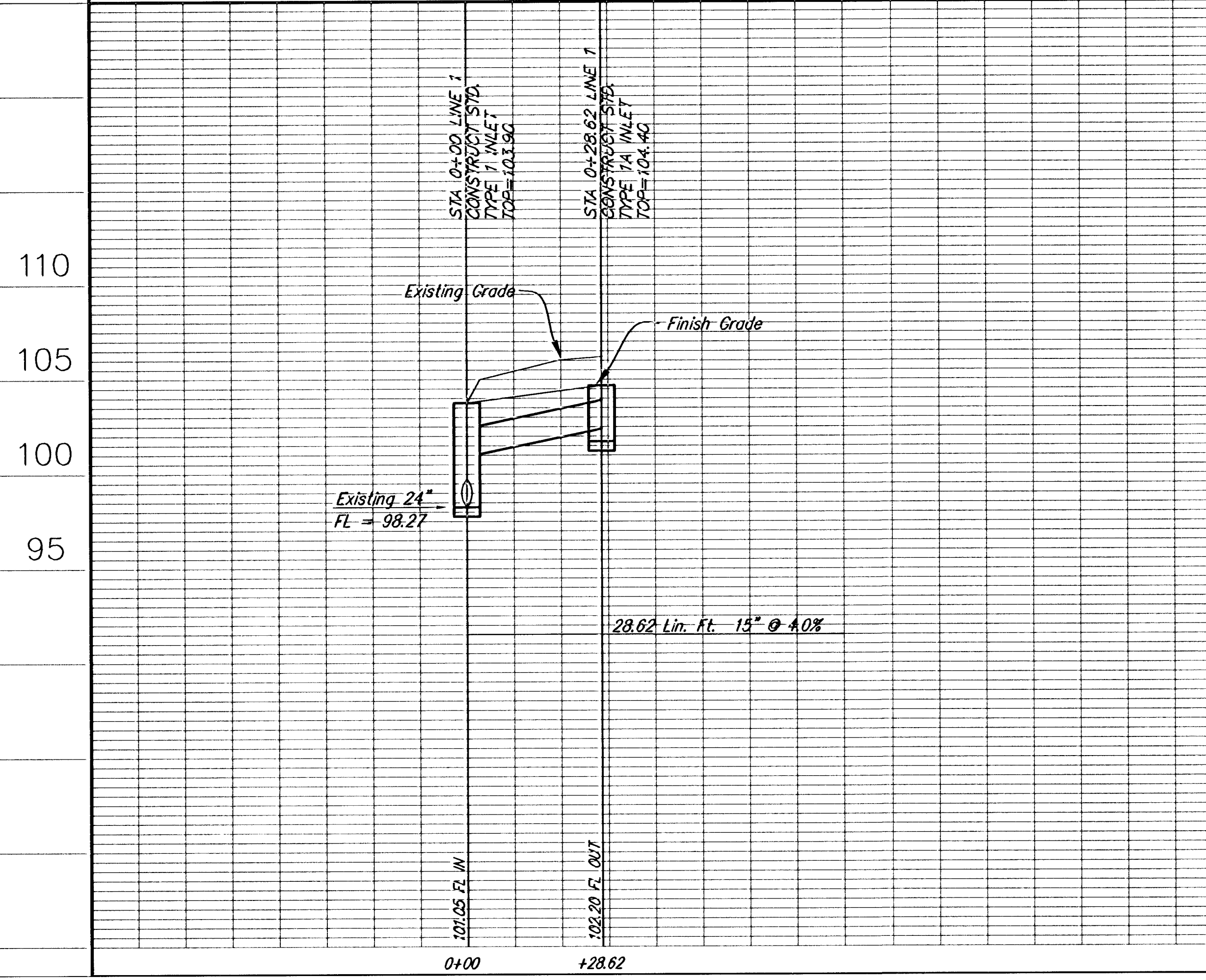
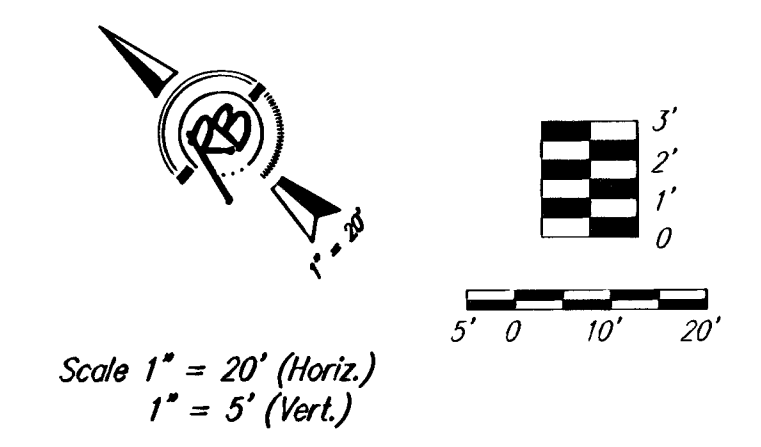
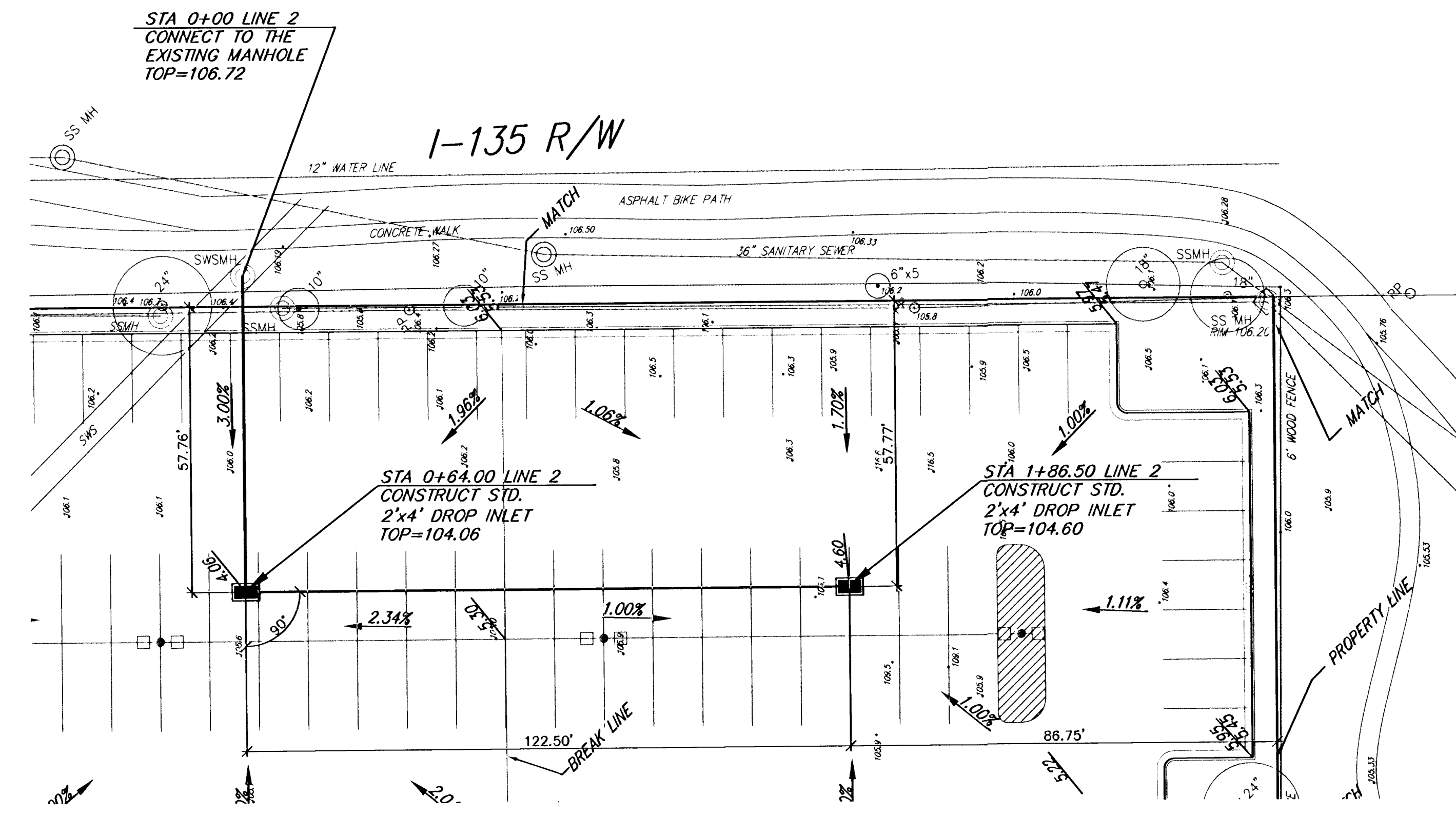
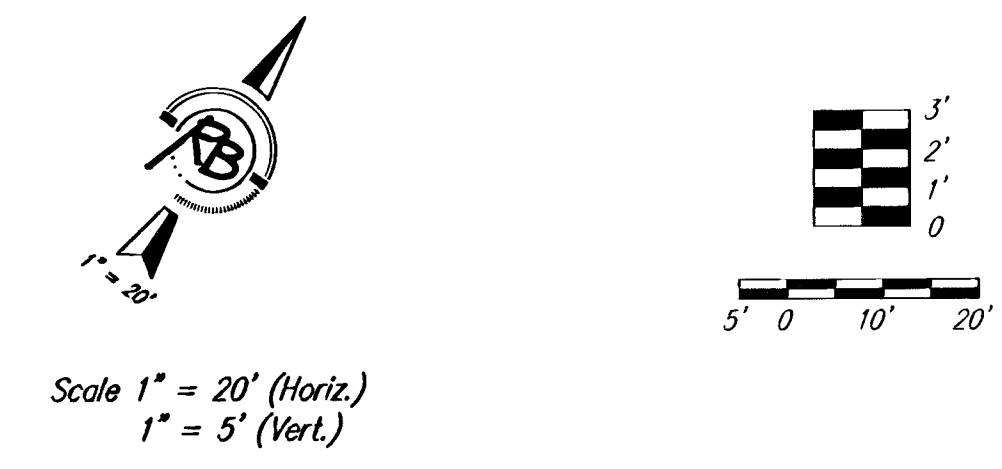
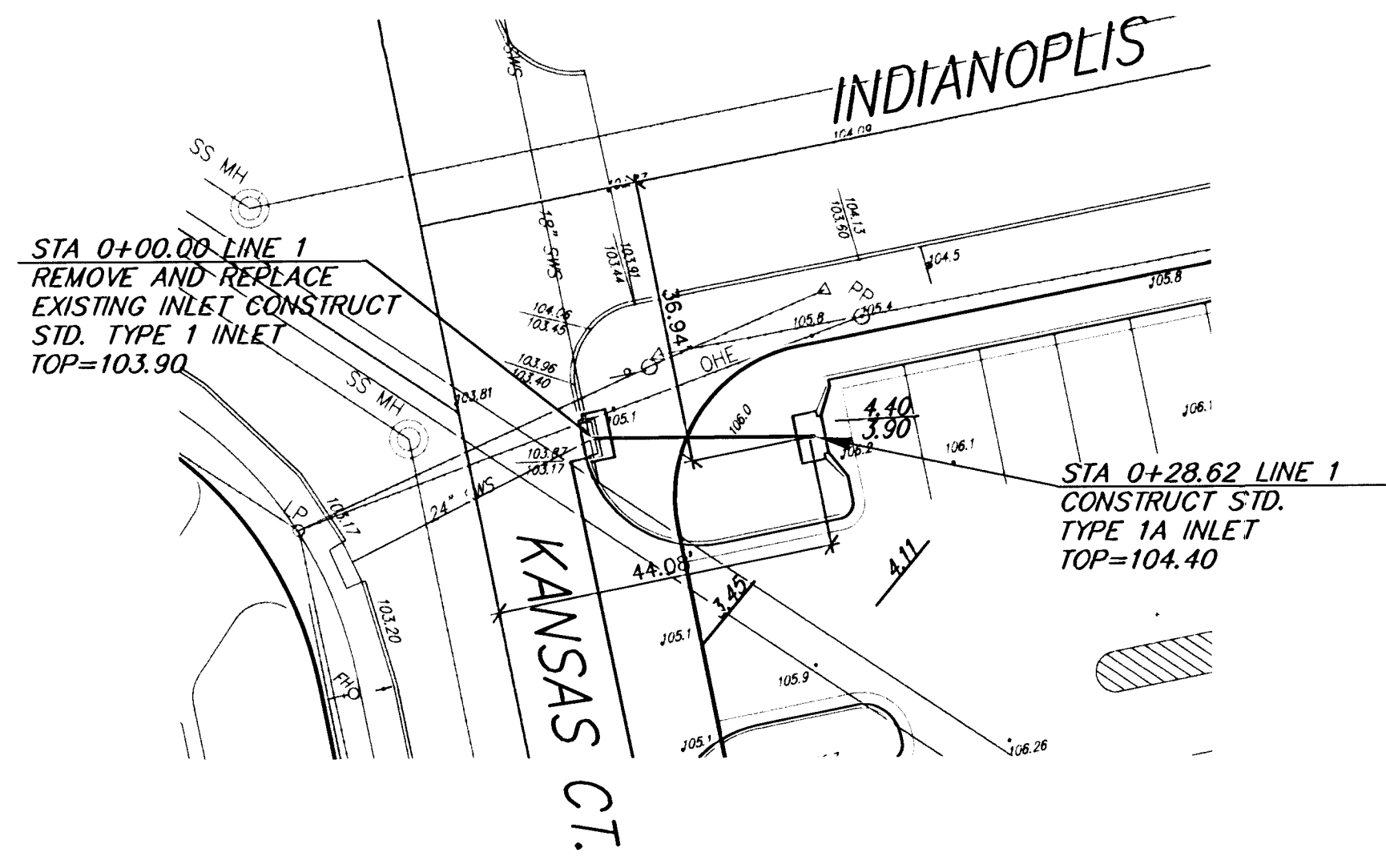
924 North Main (316) 264-8008  
 Wichita, Kansas 67203 (316) 264-4621 fax  
 www.rbkansas.com E-mail: info@rbkansas.com



Scale 1" = 20' (Horiz.)  
1" = 5' (Vert.)

**SEDGWICK COUNTY JUVENILE DETENTION PARKING LOT  
SITE GRADING PLAN**

|  |                 |         |                       |
|--|-----------------|---------|-----------------------|
| <p><b>Ruggles &amp; Bohm, P.A.</b><br/>Engineering, Surveying, Land Planning<br/>924 North Main   (316) 264-8008<br/>Wichita, Kansas 67203   (316) 264-4621 fax<br/>www.rbkansas.com</p> | DESIGN          | PDC     | SHEET<br>2<br>OF<br>9 |
|  | DRAWN           | PDC     |                       |
|  | REVIEW          | PDC     |                       |
| DRAWING FILE   | PROJECT NUMBER  | DATE    |                       |
| new engg base  | 1568 PPS 607861 | 1/21/05 |                       |



|                |                    |            |         |      |               |
|----------------|--------------------|------------|---------|------|---------------|
| PROJECT NUMBER | 1568 PPS 607861    | DESIGN     | UTILITY | DATE | July 21, 2005 |
| DRAWING FILE   | new enrg bosse.dwg | DESIGN PDC | UTILITY | DATE | July 21, 2005 |
| REVISION       |                    | DRAWN      | PDC     | DATE |               |
|                |                    | REVIEW     |         | DATE |               |

**Storm Water Sewer Extension  
WICHITA, KANSAS**

**Ruggles & Bohm, P.A.**  
Engineering, Surveying, Land Planning  
924 North Main  
Wichita, Kansas 67203  
www.rbkansas.com  
(316) 264-8008  
(316) 264-4821 fax  
E-mail: info@rbkansas.com