

STORM WATER DRAIN IMPROVEMENTS

to serve

Wichita Concrete Pipe

CITY OF WICHITA, KANSAS

James L. Armour, P.E. City Engineer

Private Project Number

1569 PPS

OCA Number

607861

GENERAL NOTES:

- Contractor will be required to provide notice to utility companies a minimum of twenty-four (24) hours prior to any excavation, as follows:

Kansas One-Call 887-2470

The Contractor must notify the following in case of an emergency:

Cox Communications	262-4270
Kansas Gas Service	1-888-482-4950
Westar Energy	383-8650
Aquila Energy	1-800-303-0357
SBC	268-2245
City of Wichita Water Dept.	268-4563
City of Wichita Sewer Maint.	268-4024
City of Wichita Storm Sewer Maint.	268-4090
City of Wichita Traffic Maint.	268-4034
Conoco Pipeline Co.	1-800-231-2551
Southern Star Pipeline Co.	529-8600
Phillips Pipeline Co.	1-800-768-8230
Jayhawk Pipeline Co.	1-888-542-9575

- Utility service lines, poles, valve boxes, meters, and etcetera are to be adjusted as necessary by others prior to construction unless the plans specifically call for their adjustment by the Contractor or unless the plans specifically identify a utility to be adjusted by its owner during construction. Existing utilities and their location, as shown on the plans, represent the best information obtainable for design. The Contractor will be required to work around existing utilities within the right-of-way which do not conflict with proposed construction.

- Rubble from the removal of miscellaneous structures and excess excavation which is to be wasted shall be disposed of on sites to be provided by the Contractor. These sites shall be approved by the Engineer as to suitability, appearance on site location. Locations, in the opinion of the Engineer, will leave an unsightly appearance will not be approved. All disposal sites must be approved by the Kansas Department of Health and Environment. Material either stockpiled or disposed of in a flood plain would require a Kansas State Board of Agriculture permit. Any material dumped in waters of the United States or wetlands is subject to U.S. Corps. of Engineers permitting regulations. Any material buried or stockpiled beyond approved construction limits would require additional archaeological investigation unless buried in a previously approved borrow location.

- Trees and shrubs which are in direct conflict with proposed new construction shall be removed by the Contractor with the Engineer's approval. Trees and shrubs which are not in direct conflict with proposed new construction shall be saved and protected from damage. Cost shall be incidental to bid item 'Site Clearing and Restoration'.

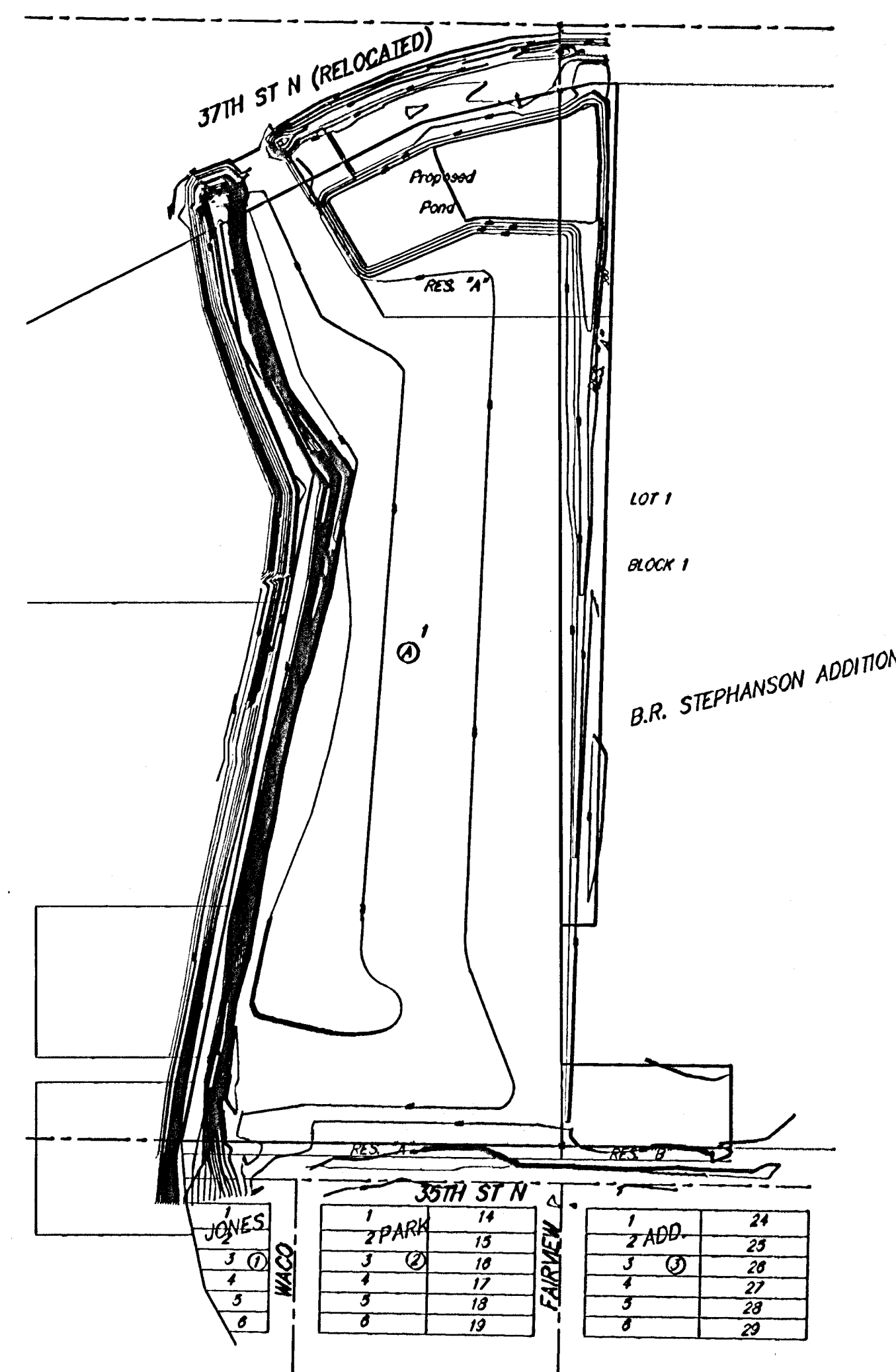
- The Contractor shall give all property owners and/or tenants of developed property abutting the construction of this project a minimum of ten (10) days advance notice prior to start of construction.

- The Contractor shall be responsible for preserving property irons. The Contractor will be required to re-establish any property irons which are damaged or destroyed by his construction operations. Such irons shall be re-established by a licensed land surveyor in accordance with state laws.

- All areas disturbed by construction shall be seeded as indicated on Storm Water Drain Improvements plan sheet.

- This project is subject to a current SWPP Plan. Contractor shall comply with any unusual requirements as necessary for site to be in compliance during construction.

- Construction Tolerances
Construction tolerance shall be +/-0.20. This shall be verified by an as-built when project is complete.



Benchmarks

BENCHMARK:
Rail Road spike South Side of power pole, 27.6' North and 25.9' East of intersection of 35th St. North and Fairview.
ELEV. = 1317.98 NGVD29
ELEV. = 130.56 CITY DATUM

Sheet Index

- | | |
|-----------------------|---|
| Title Sheet | 1 |
| Grading Plan | 2 |
| Erosion Control BMP's | 3 |
| Copy of Plat | 4 |

APPROVED AS NOTED
BY CITY ENGINEER OF WICHITA

Sanitary Sewers _____

Storm Sewers SCA 8-1-05

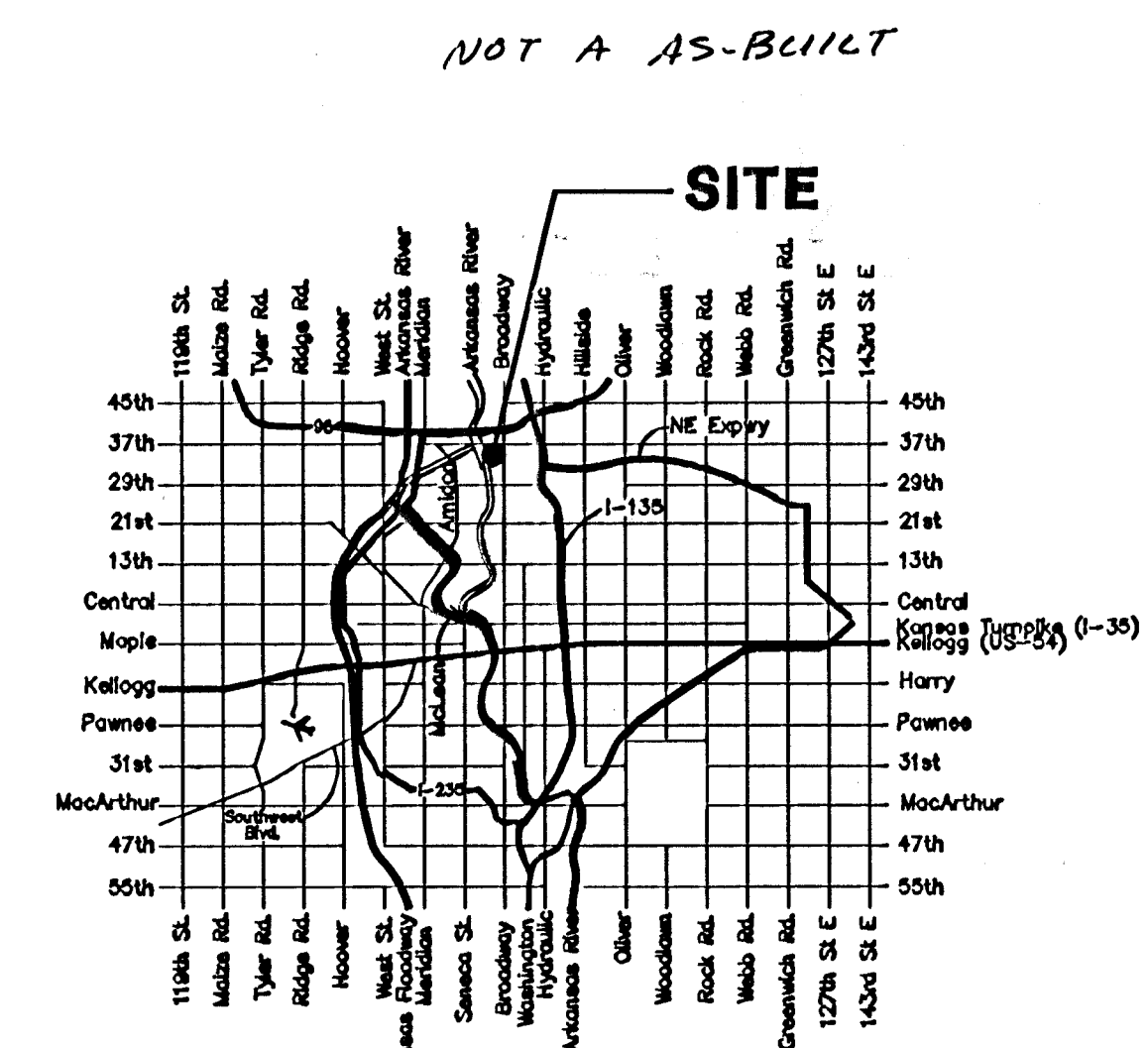
Driveway Approaches _____

Water Mains _____

Paving _____

NOTE TO CONTRACTORS

Installation, inspection and testing for this project is to be provided by a Licensed Consulting Engineering Firm under contract with the Owner/Developer. Said inspection to be in accordance with the City of Wichita standard construction engineering practices and certified by a Licensed Professional Engineer. No work shall be performed in dedicated easements or public right-of-way by the Contractor without such inspection nor shall any work be commenced without written authorization by the City Engineer. All Construction and Materials shall comply with the City of Wichita Specifications and Standards (on file and available in the City Engineer's Office).



Vicinity Map

July 2005

	Baughman Company, P.A. 315 Ella St. Wichita, KS 67211 P 316-262-7271 F 316-262-0145
	ENGINEERING SURVEYING PLANNING LANDSCAPE ARCHITECTURE