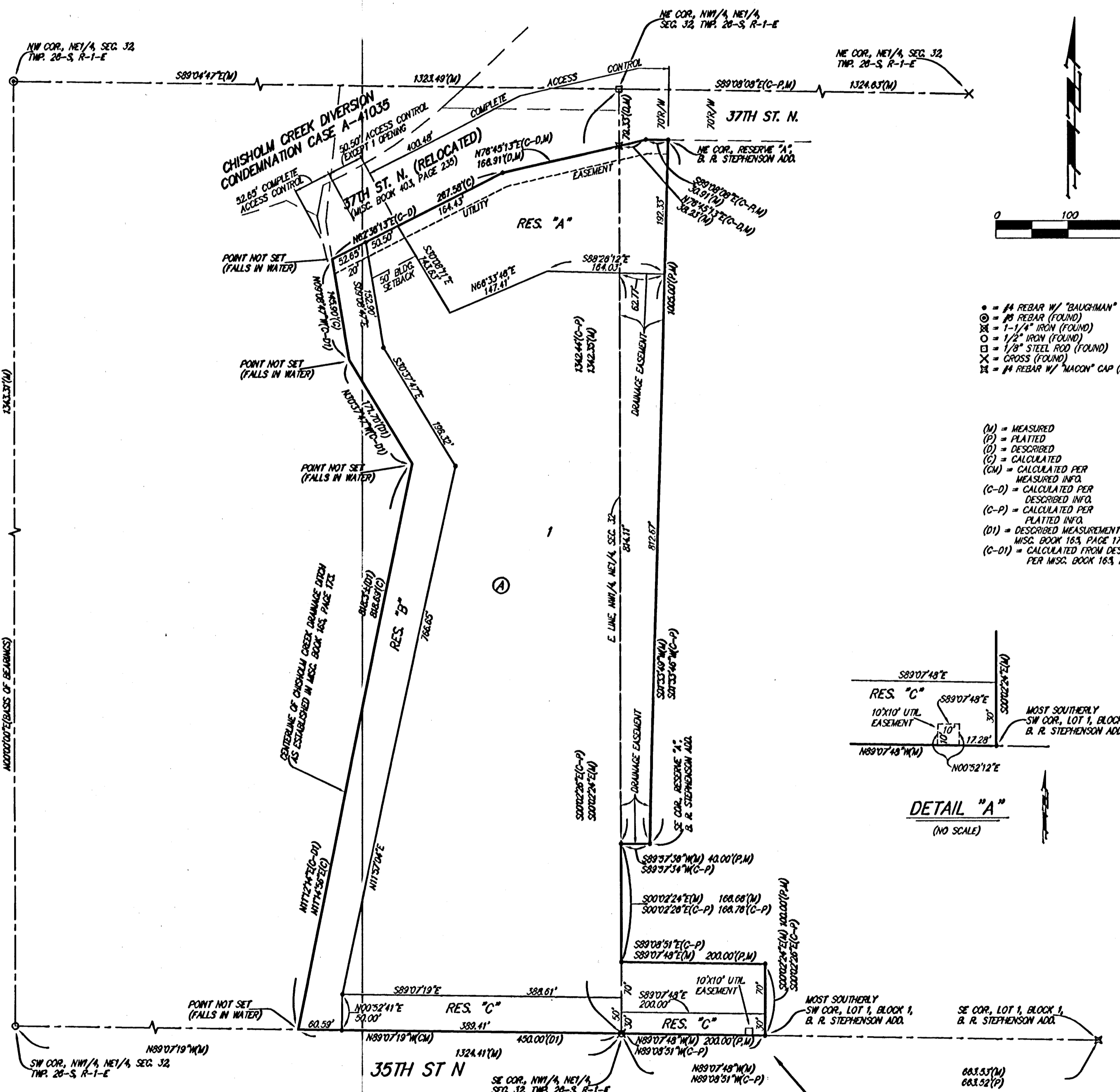
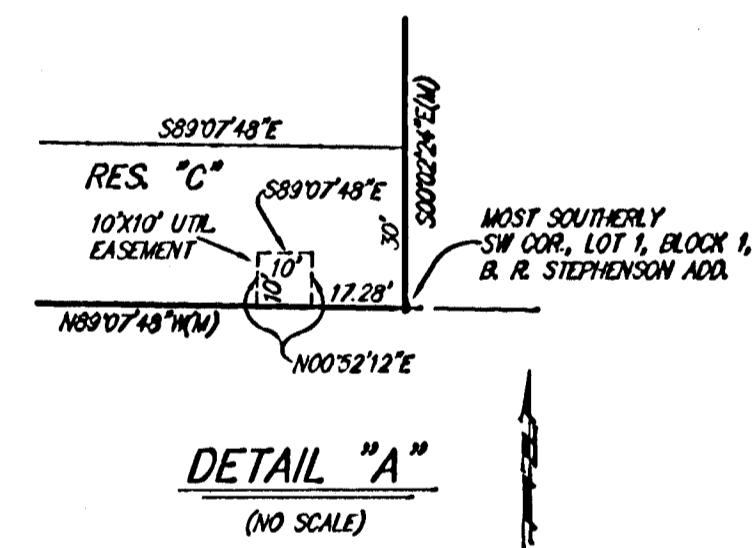


WICHITA CONCRETE PIPE ADDITION

WICHITA, SEDGWICK COUNTY, KANSAS



- ⊕ = #4 REBAR W/ "BAUGHMAN" CAP (SET)
 - ⊙ = #6 REBAR (FOUND)
 - ⊖ = 1-1/4" IRON (FOUND)
 - ⊘ = 1/2" IRON (FOUND)
 - ⊚ = 1/2" STEEL ROD (FOUND)
 - ⊛ = CROSS (FOUND)
 - ⊜ = #4 REBAR W/ "MASON" CAP (FOUND)
- (M) = MEASURED
 - (P) = PLATTED
 - (D) = DESCRIBED
 - (C) = CALCULATED
 - (CM) = CALCULATED PER MEASURED INFO
 - (C-D) = CALCULATED PER DESCRIBED INFO
 - (C-P) = CALCULATED PER PLATTED INFO
 - (D1) = DESCRIBED MEASUREMENT PER MISC. BOOK 165, PAGE 113
 - (C-D1) = CALCULATED FROM DESCRIPTION PER MISC. BOOK 165, PAGE 113



BENCHMARKS
 ARKANSAS & 35TH ST. N. - CITY OF WICHITA
 BENCHMARK D20
 42.00' N. OF &
 24.00' W. OF &
 ELEV. = 1317.81 NGVD29
 (130.21 CITY DATUM)

SMALL R.R. SPIKE IN E. SIDE OF POWER POLE
 17.7' S. & 11.2' E. OF SW COR. RES. "C".
 ELEV. = 1318.87 NGVD29
 (132.47 CITY DATUM)

R.R. SPIKE IN S. SIDE OF POWER POLE
 18.2' S. & 28.9' E. OF SE COR. RES. "C".
 ELEV. = 1317.58 NGVD29
 (130.58 CITY DATUM)

MINIMUM BUILDING PAD ELEVATIONS FOR LOWEST OPENING TO THE STRUCTURES		
LOT	BLOCK	ELEVATION
1	A	1318.4
		131.0

NOTE:
 A drainage plan has been developed for this subdivision and is on file with the City of Wichita, Kansas. Drainage inlets shall remain as depicted or as modified with the approval of the City Engineer of the City of Wichita, Kansas. No obstructions which impede the flow of the drainage plan shall be allowed.

State of Kansas) SS We, Baughman Company, P.A., Surveyors in
 Sedgwick County) do hereby certify that we have surveyed and
 plotted "WICHITA CONCRETE PIPE ADDITION", Wichita, Sedgwick County,
 Kansas and that the accompanying plat is a true and correct exhibit of
 the property surveyed, described as follows: Beginning at the NE corner
 of the NW 1/4 of the NE 1/4 of Sec. 32, Twp. 26-S, R-1-E of the 6th
 P.M., Sedgwick County, Kansas; thence south to the SE corner of the
 NW 1/4 of the NE 1/4 of Sec. 32, Twp. 26-S, R-1-E of the 6th
 P.M., thence westerly to the center of Chisholm Creek, thence
 northerly following meanderings of said Creek to the north line of
 the NE 1/4; thence east to the beginning, EXCEPT that part taken for
 roadway in Condemnation Case A-41035, and EXCEPT that part taken for
 the relocation of 37th Street North, TOGETHER with the south 100 feet of
 the west 200 feet of the NE 1/4 of the NE 1/4 of Section 32, Twp. 26-S,
 R-1-E, of the 6th P.M., Sedgwick County, Kansas, and together with
 Reserve "A", B. R. Stephenson Addition to the City of Wichita, Sedgwick
 County, Kansas, all being subject to road rights-of-way of record.

Existing public easements and dedications
 being vacated by virtue of K.S.A. 12-512(b).
 All being situated in the NE 1/4 of Sec. 32, Twp. 26-S,
 R-1-E of the 6th P.M., Sedgwick County, Kansas.
 Baughman Company, P.A.

Michael G. Conroy, Surveyor

Know all men by these presents that we, the undersigned, have caused the land in the surveyors certificate to be platted into a Lot, a Block, and Reserves, to be known as "WICHITA CONCRETE PIPE ADDITION", Wichita, Sedgwick County, Kansas. The utility easements are hereby granted as indicated for the construction and maintenance of all public utilities. The drainage easement is hereby granted as indicated for drainage purposes. Reserve "A" is hereby reserved for open space, landscaping, lakes, drainage purposes, and utilities as confined to easement. Reserve "B" is hereby reserved for screening walls, a bike path, open space, landscaping, and drainage purposes. Reserve "C" is hereby reserved for screening walls, open space, landscaping, utilities as confined to easement, and drainage purposes. Reserves "A", "B", and "C" shall be owned and maintained by the owner of Lot 1, Block A. Access controls shall be as depicted on the face of the plat and are hereby granted to the City of Wichita, Kansas. The Minimum Building Pad Elevation for the lowest opening to the structures on Lot 1, Block A, shall be 1318.4 NGVD29, (131.0 City Datum).

Wichita Concrete Pipe, Inc., a Kansas corporation
 Chris Anderson, President

State of Kansas) SS The foregoing instrument acknowledged before
 County) me, this _____ day of _____, 2005, by Chris Anderson, President
 of Wichita Concrete Pipe, Inc., a Kansas corporation, on behalf of the
 corporation.
 _____, Notary Public

My App't. Exp. _____

This plat of "WICHITA CONCRETE PIPE ADDITION", Wichita, Sedgwick County, Kansas has been submitted to and approved by the Wichita-Sedgwick County Metropolitan Area Planning Commission, Wichita, Kansas.
 Dated this _____ day of _____, 2005.
 Wichita-Sedgwick County Metropolitan Area Planning Commission

_____, Chair
 Morris K. Dunlap

_____, Secretary
 John L. Schlegel

This plat approved and all dedications shown hereon accepted by the City Council of the City of Wichita, Kansas, this _____ day of _____, 2005.

_____, Mayor
 Carlos Mayans

_____, City Clerk
 Karen Sublett

Reviewed in accordance with K.S.A. 58-2005 on this _____ day of _____, 2005.

Tricia L. Robello, L.S. #1246
 Deputy County Surveyor
 Sedgwick County, Kansas

Entered on transfer record this _____ day of _____, 2005.

_____, County Clerk
 Don Brace

State of Kansas) SS This is to certify that this plat has been
 Sedgwick County) filed for record in the office of the Register of Deeds, this _____ day
 of _____, 2005 at _____ o'clock _____ M., and is duly recorded.

_____, Register of Deeds
 Bill Meek

_____, Deputy
 Tonya Buckingham

