

# PRIVATE STORM SEWER TO SERVE LOT 2, BLK 1 TORLINE ADDITION PRIVATE PROJECT NUMBER 1572 PPS (607861)

## GENERAL NOTES

1. Contractor will be required to provide a minimum advance notice of forty-eight (48) hours to utility companies prior to starting any excavation as follows:

Kansas One-Call 687-2470

The Contractor must notify the following in case of an emergency:

Cox Communications	262-0661
Kansas Gas Service	383-8600
Westar	383-8600
Aquila Energy	1-800-303-0357
Southwestern Bell Telephone Company	1-800-286-8313
City of Wichita Water Department	262-6000
City of Wichita Sewer Maintenance	262-6000

2. Existing utilities and their location, as shown on the plans, represent the best information obtainable for design. Location information has been obtained from the various utility companies and is either from company record drawings or company-provided field locations. The Contractor will be required to work around existing utilities within the right-of-way which do not conflict with proposed construction.

3. A saw cut of the full depth of existing surface courses or pavement thickness shall be provided at locations where proposed construction abuts an existing surface course or pavement for which partial removal of that surface or pavement is required, except when such saw cuts are within three (3) feet of an existing joint the limits of removal shall be extended to the existing joint.

4. Rubble from the removal of miscellaneous structures and excess excavation which is to be wasted shall be disposed of on sites to be provided by the Contractor. These sites shall be approved by the Engineer as to suitability, appearance and site location. Locations that, in the opinion of the Engineer, will leave an unsightly appearance will not be approved.

5. All disposal sites must be approved by the Kansas Department of Health and Environment. Material either stockpiled or disposed of in a flood plain would require a Kansas State Board of Agriculture permit. Any material dumped in waters of the United States or wetlands is subject to U.S. Corps permitting regulations. Any material buried or stockpiled beyond approved of Engineers construction limits would require additional archeological investigations unless buried in a previously approved borrow location.

6. This project is located within the limits of a larger project which will include building construction. The General Contractor for the project will submit a Storm Water Pollution Prevention Plan for the entire project prior to beginning any work on this project.

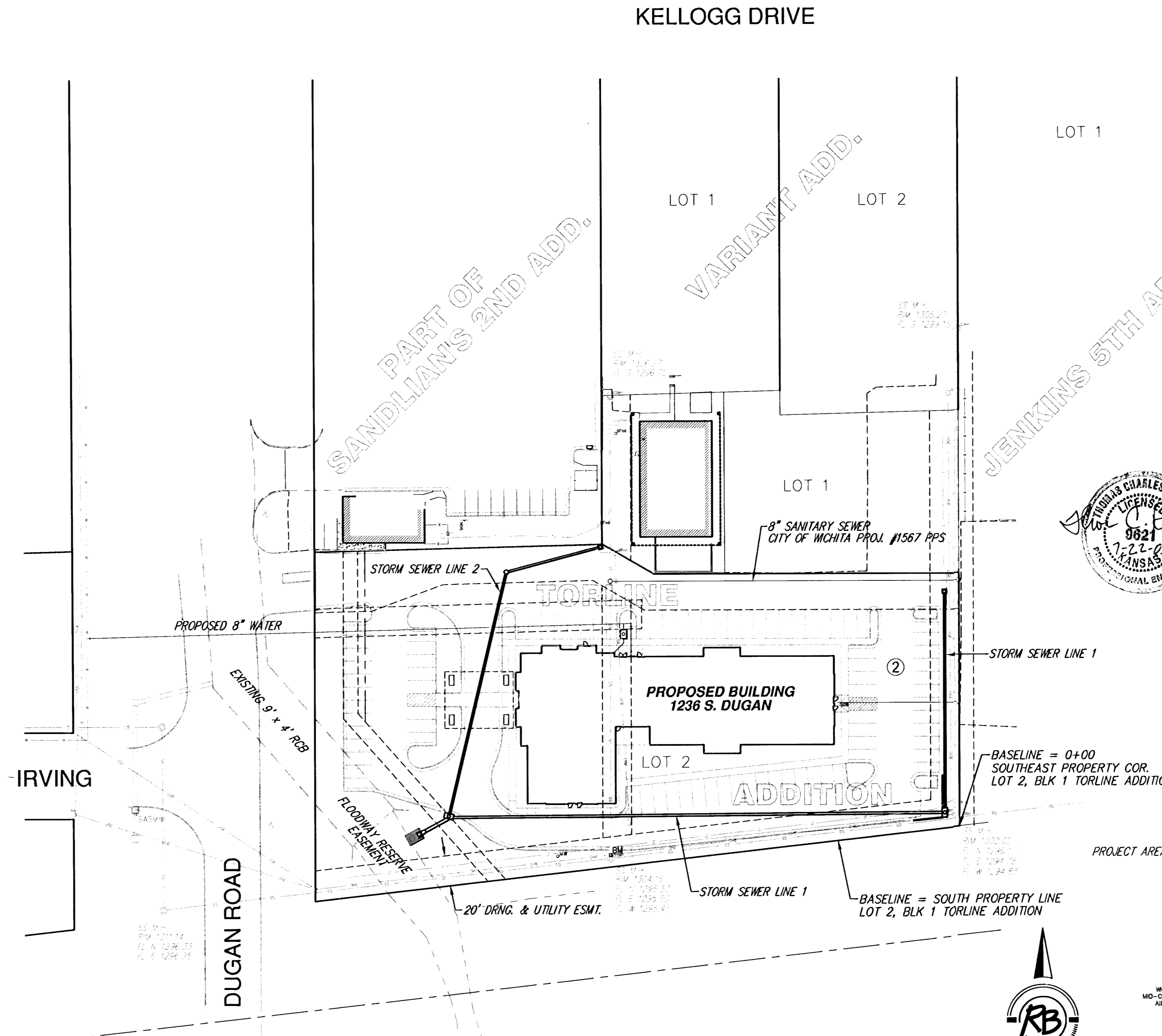
7. This project is to be constructed in accordance with City of Wichita Standard Specifications for the Construction of City Projects, and Policy on Construction of Public Works Improvements by Private Contract.

8. No work shall begin on this project before required bonds are submitted to the City of Wichita, and the project inspector has been notified.

9. All areas of public R/W disturbed by construction of this project are to be restored in accordance with Administrative Regulation AR 78 of the City of Wichita.

10. Trench backfill to be compacted to minimum of 98% std. density (ASTM D-698) to existing grade.

11. Traffic will not be affected by construction of this project.



## INDEX OF SHEETS

1. INDEX SHEET
2. SITE GRADING PLAN
3. STORM SEWER PLAN & PROFILE
4. STORM SEWER PLAN & PROFILE
5. TYPE 1 CURB INLET DETAILS
6. SINGLE DROP INLET DETAILS
7. STANDARD TYPE "P" MANHOLE DETAILS

## BENCHMARKS

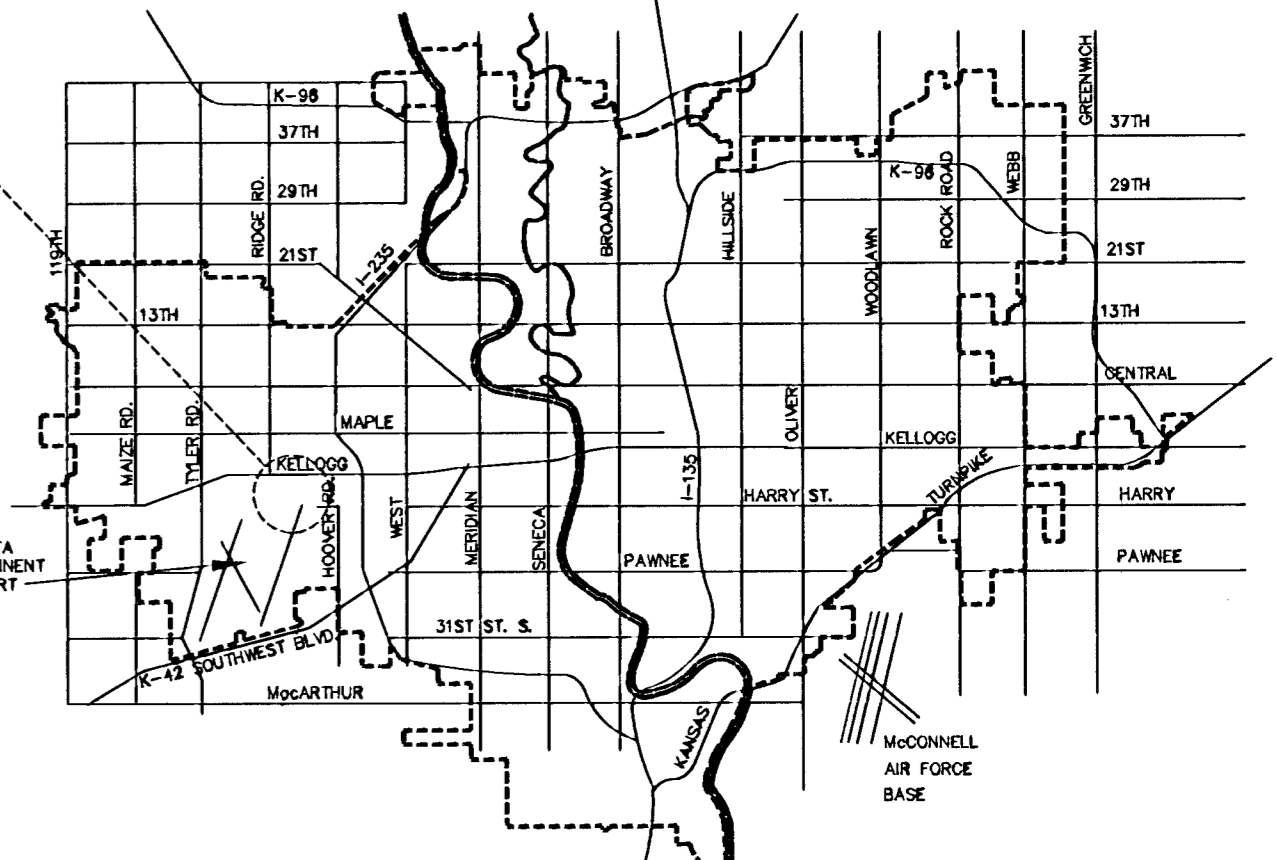
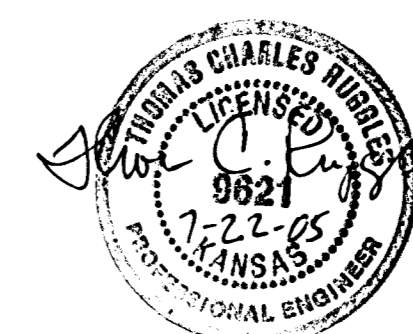
NORTH RIM OF M.H. 207' E. & 6' N. OF  
S.W. COR. OF TORLINE ADDITION  
ELEV. 1304.14

APPROVED AS NOTED  
BY CITY ENGINEER OF WICHITA

Sanitary Sewers	_____
Storm Sewers	<u>ACT 7-22-05</u>
Driveway Approaches	_____
Water Mains	_____
Paving	_____

NOTE TO CONTRACTORS

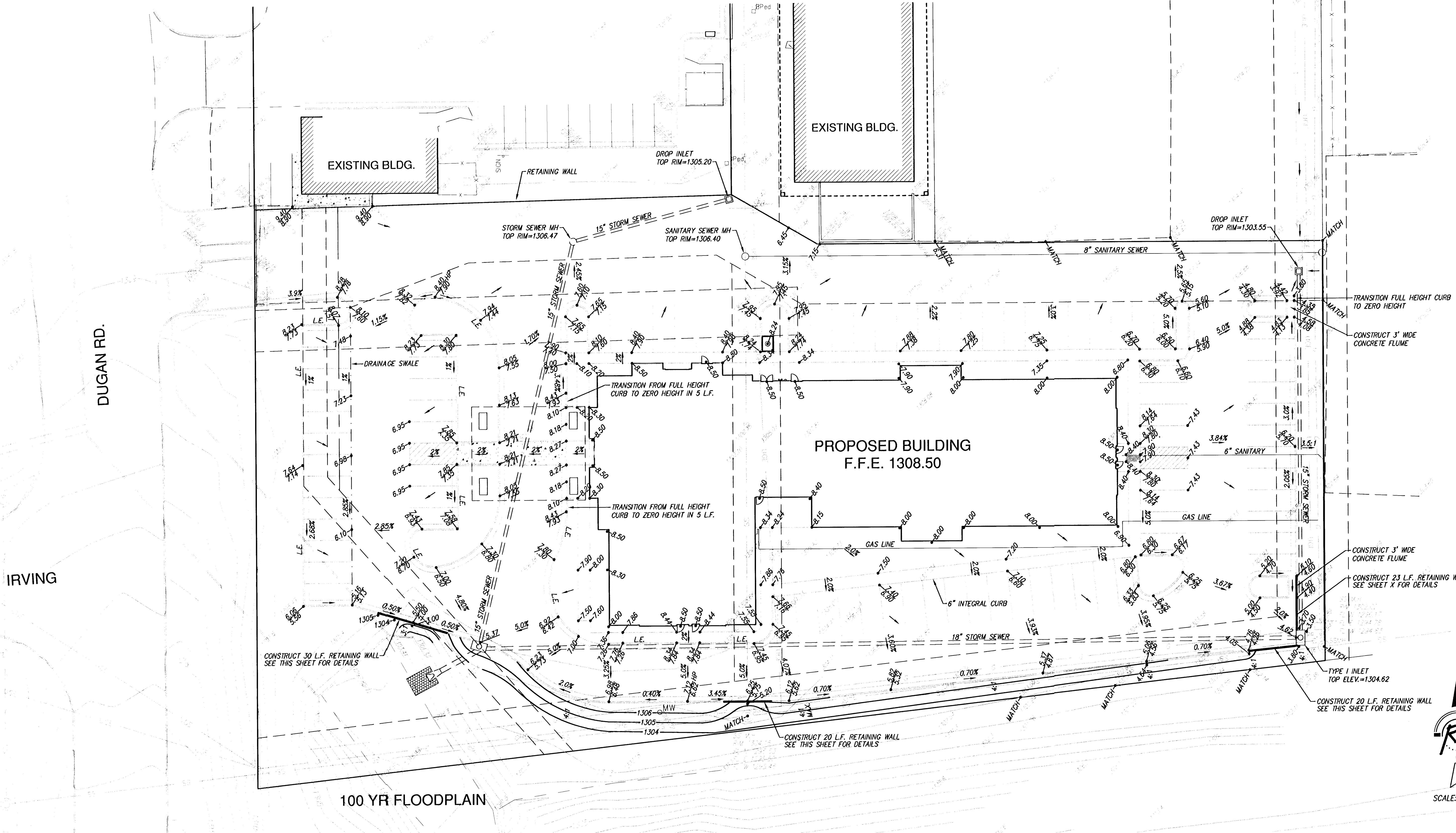
Inspection and testing for this project are to be provided by a Licensed Consulting Engineering Firm under contract with the Owner/Developer. Said inspection to be in accordance with the City of Wichita standard construction engineering practices and certified by a Licensed Professional Engineer. No work shall be performed in dedicated easements or public right-of-way by the Contractor without such inspection, nor shall any work be commenced without written authorization by the City Engineer.



SCALE: 1"=50'  
**AS-BUILT**  
8/1/06  
Ctd. K.E. Miller  
Signed

**CITY OF WICHITA, KANSAS**  
**JAMES L. ARMOUR, P.E., CITY ENGINEER**

**Ruggles & Bohm, P.A.**  
Engineering, Surveying, Land Planning  
924 North Main (316) 264-8008  
Wichita, Kansas 67203 (316) 264-4621 fax  
www.rbkansas.com E-mail: info@rbkansas.com



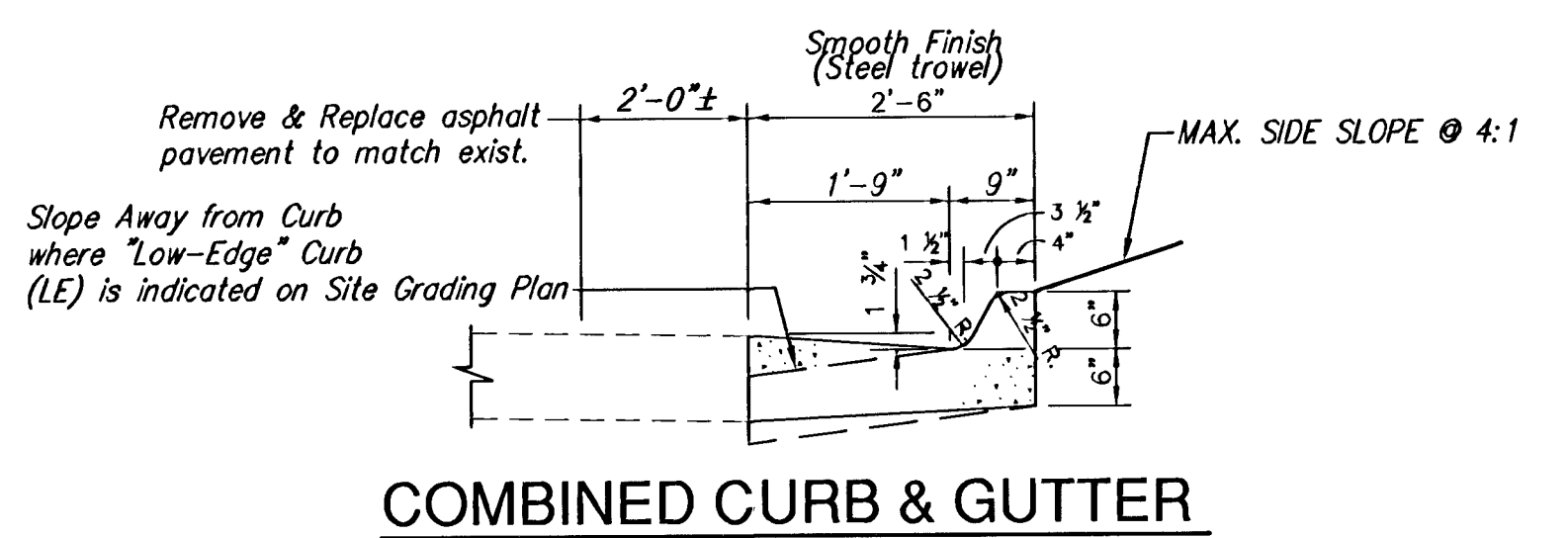
DUGAN RD.

IRVING

100 YR FLOODPLAIN



SCALE: 1"=20'



**NOTE:**  
PAVEMENT AND GRADING ON THIS SHEET PROVIDED FOR INFORMATION ONLY.

**LOT 2 TORLINE ADDITION  
SITE GRADING PLAN  
WICHITA, KANSAS**

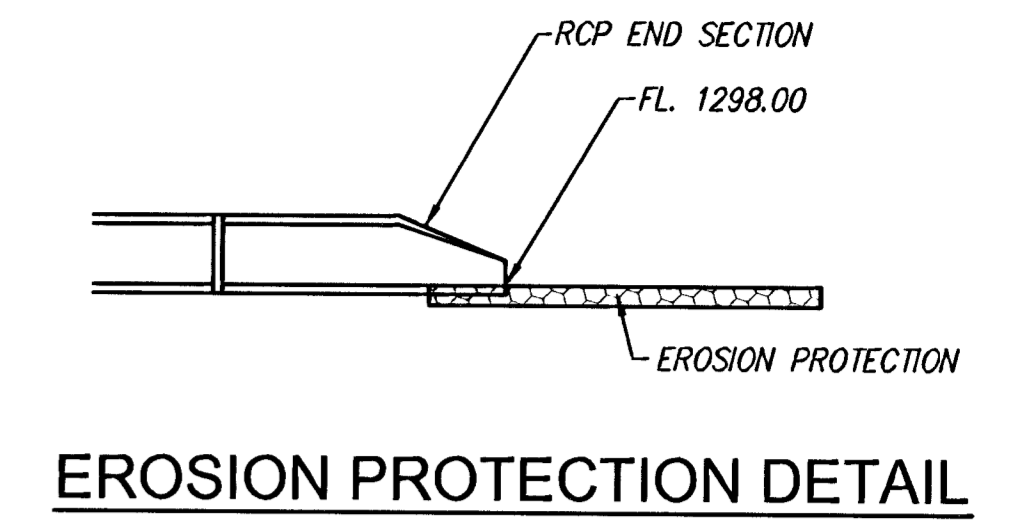
**Ruggles & Bohm, P.A.**  
Engineering, Surveying, Land Planning

924 North Main  
Wichita, Kansas 67203  
www.rbkansas.com

(316) 264-8008  
(316) 264-4621 fax  
E-mail: info@rbkansas.com

DRAWING FILE: Engineering Base {Grading}  
PROJECT NUMBER: 1572 PPS

DESIGN	TCR	SHEET 2 OF 7
DRAWN	EJB	
REVIEW		
UTILITY		
DATE	July 22, 2005	



STA. 0+25.33 LINE 1 =  
STA. 0+00 LINE 2  
BL. STA. 3+51.79 48.06' RT.  
CONSTRUCT TYPE 1 CURB INLET  
W = 5'-4" L = 6'-4"  
TOP RIM=1305.37

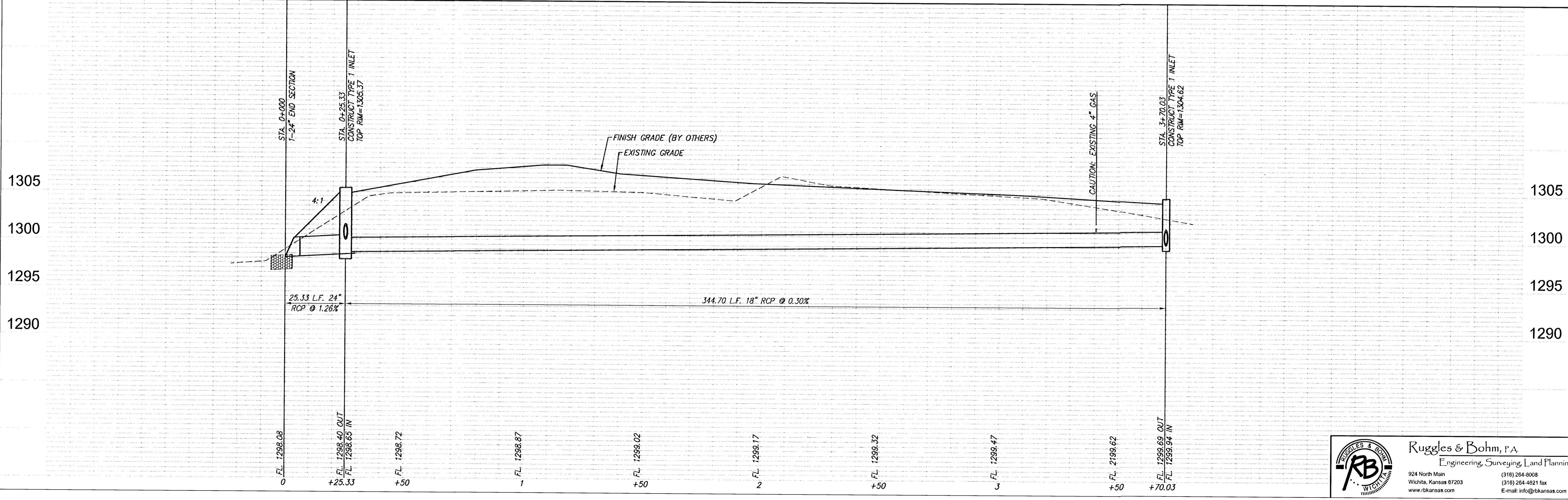
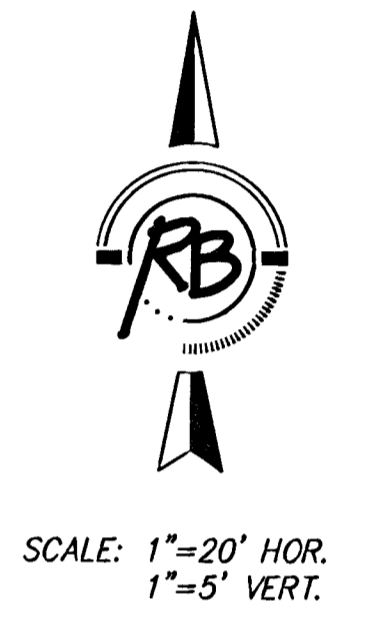
STA. 0+00.00 LINE 1 =  
BL. STA. 3+74.77 37.43' RT.  
BEGIN LINE 1 W/ 24" END SECTION  
AND 10'x10' EROSION LINING-  
FL=1298.08 LIGHT STONE RIP-RAP

STA. 3+70.03 LINE 1 =  
BL. STA. 0+9.11 10.77' RT.  
CONSTRUCT TYPE 1 CURB INLET  
W = 5'-4" L = 6'-4"  
TOP RIM=1304.62

PLACE 10 SQ. YDS. EROSION PROTECTION-  
ARMORFLEX-30S OR ARMORLOG-3510 (OR APPR. EQUAL)  
W/ GEOGRID REINF. (INSTALL PER MANUFACTURER'S RECOMMENDATIONS)

BASELINE = 0+00  
SOUTHEAST PROPERTY COR.  
LOT 2, BLK 1 TORLINE ADDITION

BASELINE = SOUTH PROPERTY LINE  
LOT 2, BLK 1 TORLINE ADDITION



DESIGN	PROJECT NUMBER	REVISION
TCR	1572 PPS	DRAWN
UTILITY	Storm Sewer	EJB
	Eng. Boze	DATE
		July 22, 2005
		REVIEW

**Ruggles & Bohm, P.A.**  
Engineering, Surveying, Land Planning

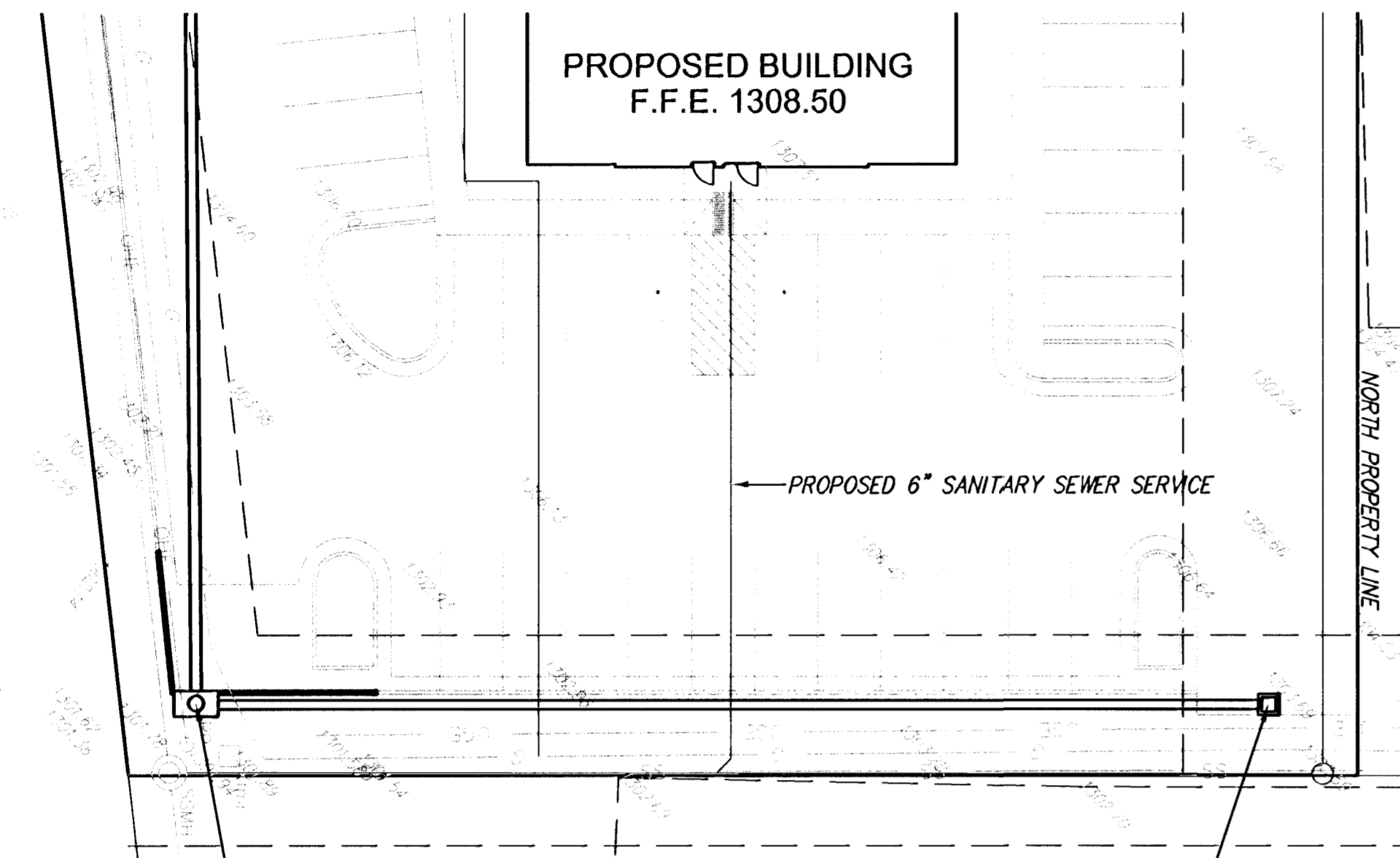
924 North Main  
Wichita, Kansas 67203  
www.rbkansas.com

(316) 264-8008  
(316) 264-4621 fax  
E-mail: info@rbkansas.com



SCALE: 1"=20' HOR.  
1"=5' VERT.

LINE 1



STA. 3+70.03 LINE 1 =  
BL. STA. 0+9.11 10.77' RT.  
TOP RIM=1304.62

STA. 5+23.11 LINE 1 =  
BL. STA. 0+10.35 163.92' RT.  
CONSTRUCT SINGLE DROP INLET  
TOP RIM=1303.55

BASELINE = SOUTH PROPERTY LINE  
LOT 2, BLK 1 TORLINE ADDITION  
BL. STA. 0+00 = SOUTHEAST PROP. COR.

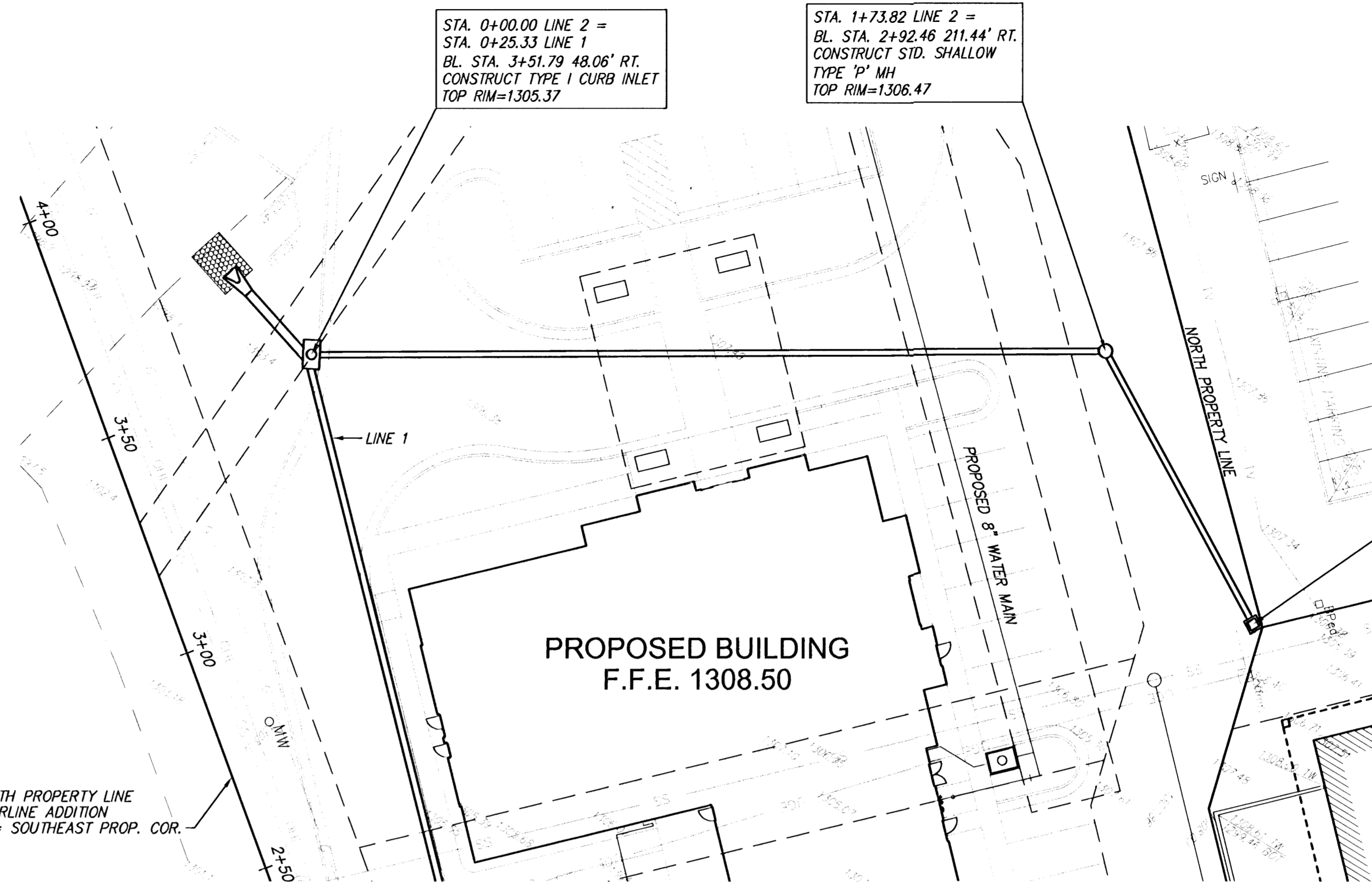


SCALE: 1"=20' HOR.  
1"=5' VERT.

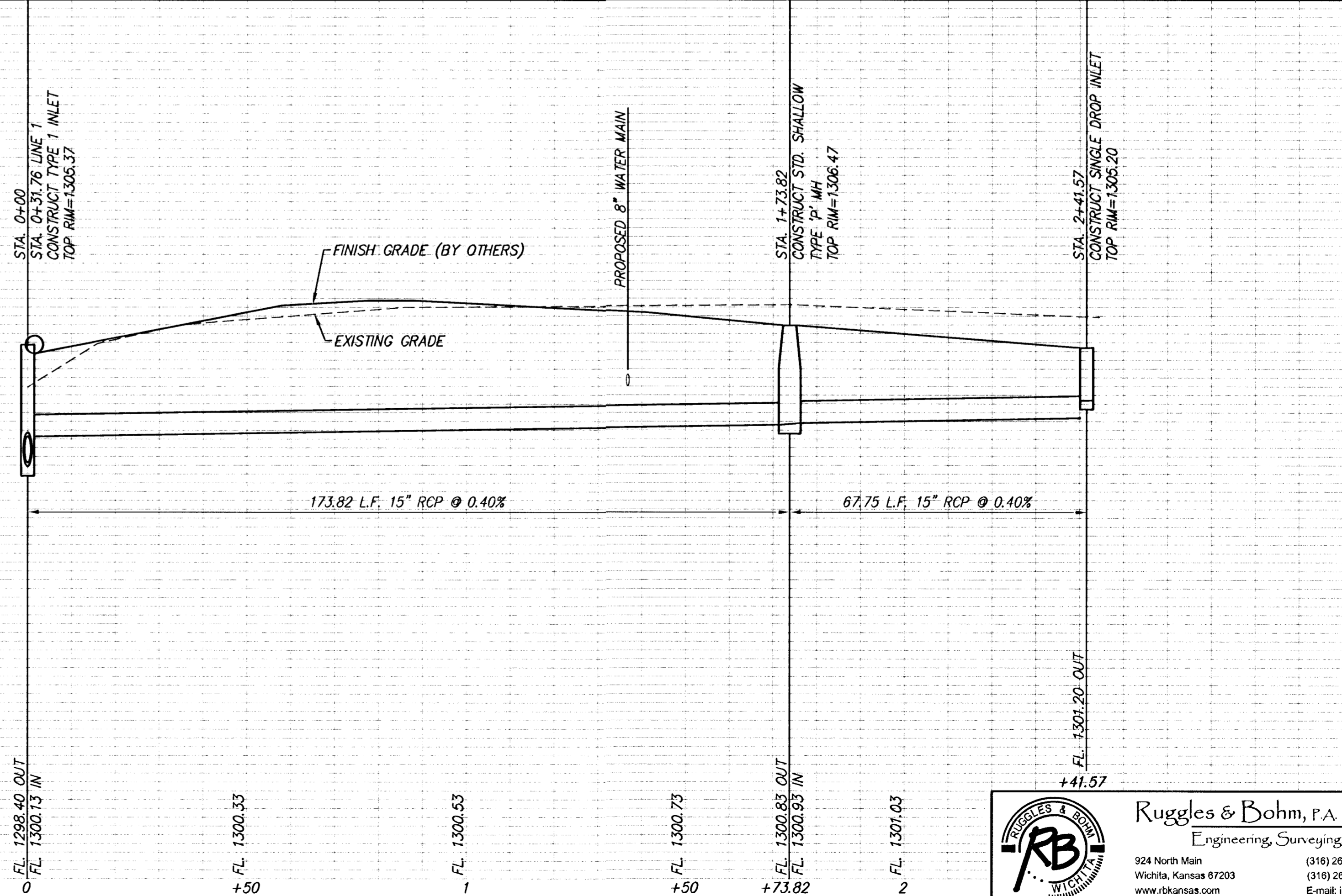
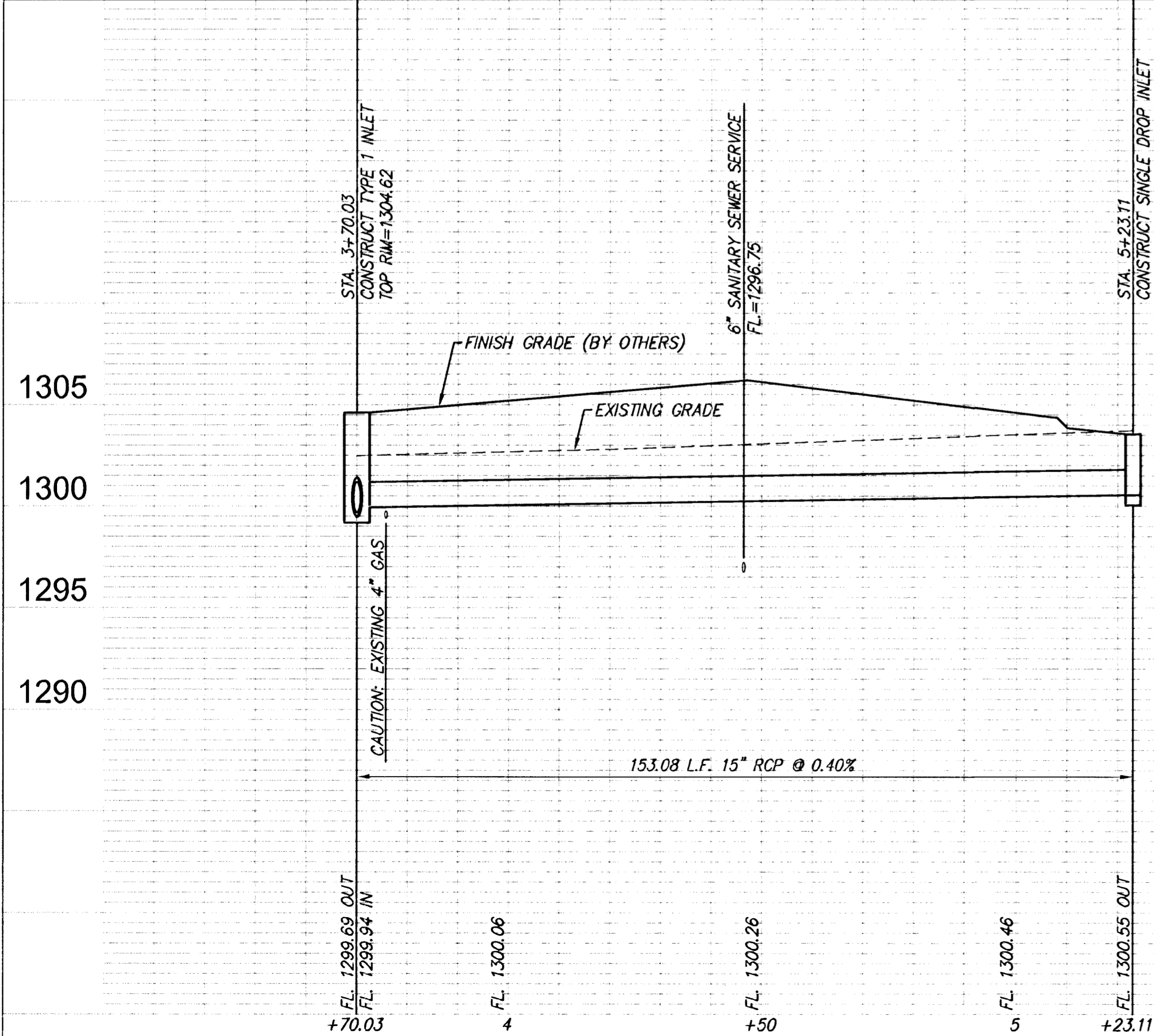
STA. 0+00.00 LINE 2 =  
STA. 0+25.33 LINE 1  
BL. STA. 3+51.79 48.06' RT.  
CONSTRUCT TYPE 1 CURB INLET  
TOP RIM=1305.37

STA. 1+73.82 LINE 2 =  
BL. STA. 2+92.46 211.44' RT.  
CONSTRUCT STD. SHALLOW  
TYPE 'P' MH  
TOP RIM=1306.47

STA. 2+41.57 LINE 2 =  
BL. STA. 2+25.42 221.29' RT.  
CONSTRUCT SINGLE DROP INLET  
TOP RIM=1305.20



LINE 2



DESIGN	TOR	DATE	July 22, 2005
DRAWN	EJB	REVIEW	
PROJECT NUMBER	1572 PPS	DRAWING FILE	Eng. Base (Storm) Sewer1
<b>LOT 2, TORLINE ADDITION STORM SEWER PLAN &amp; PROFILE WICHITA, KANSAS</b>			
RB JOB	2877E		
SHEET	4		
	4		
	7		

**Ruggles & Bohm, P.A.**  
Engineering, Surveying, Land Planning

924 North Main  
Wichita, Kansas 67203  
www.rbkansas.com

(316) 264-8008  
(316) 264-4621 fax  
E-mail: info@rbkansas.com