

PRIVATE STORM SEWER EXTENSION

TO SERVE WICHITA NORTH HIGHSCHOOL

PRIVATE PROJECT NUMBER 1587 PPS (607861)

1587 PPS
SWS

INDEX OF SHEETS

1. TITLE SHEET
2. STORM SEWER PLAN & PROFILE (LINE A)
3. DROP INLET DETAILS
4. SHALLOW MANHOLES TYPE 'P' AND 'C'

GENERAL NOTES

1. Contractor will be required to provide a minimum advance notice of forty-eight (48) hours to utility companies prior to starting any excavation as follows:

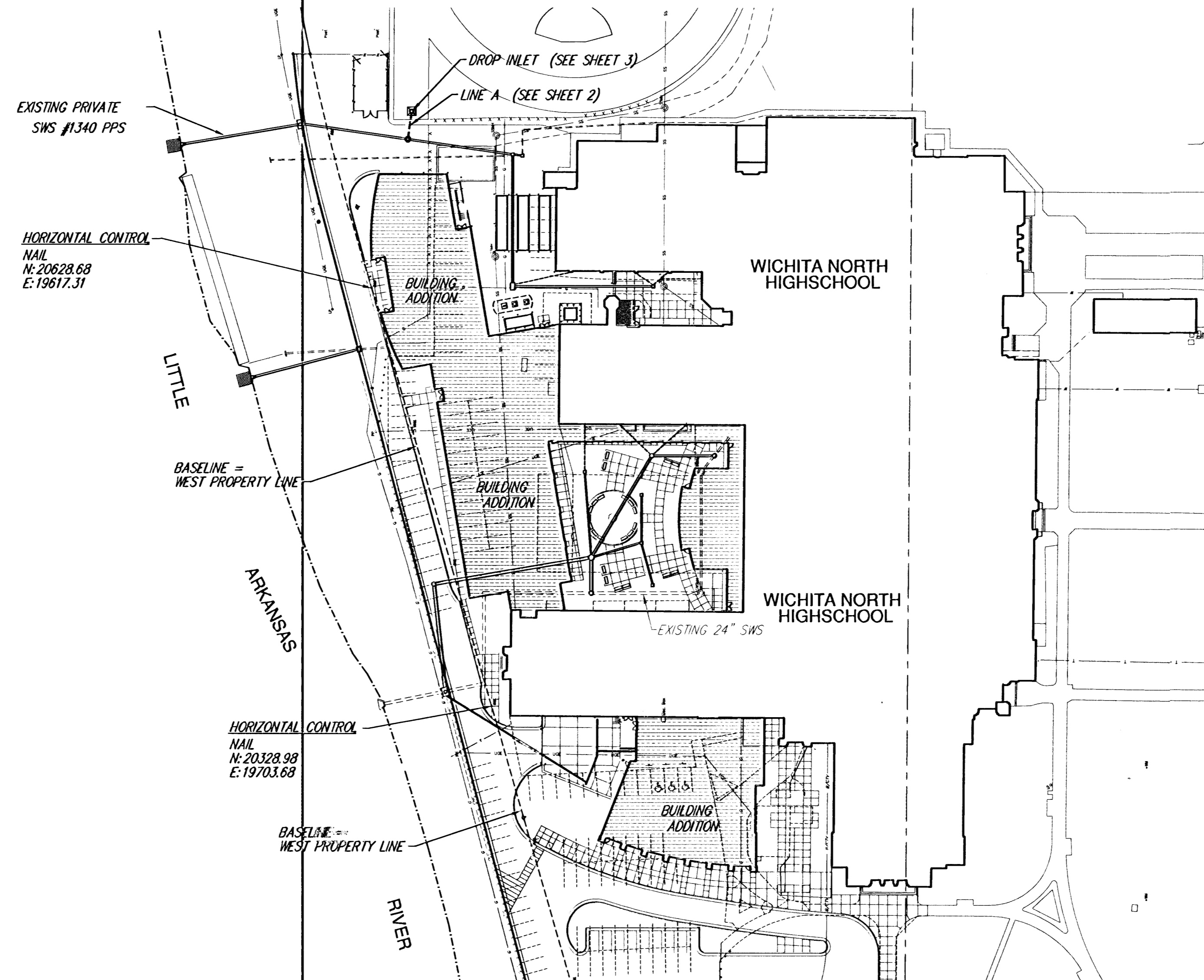
Kansas One-Call 687-2470

The Contractor must notify the following in case of an emergency:

Cox Communications	262-0661
Kansas Gas Service	383-8600
Westar	383-8600
Aquila Energy	1-800-303-0357
Southwestern Bell Telephone Company	1-800-286-8313
City of Wichita Water Department	262-6000
City of Wichita Sewer Maintenance	262-6000

2. Existing utilities and their location, as shown on the plans, represent the best information obtainable for design. Location information has been obtained from the various utility companies and is either from company record drawings or company-provided field locations. The Contractor will be required to work around existing utilities.

3. A saw cut of the full depth of existing surface courses or pavement thickness shall be provided at locations where proposed construction abuts an existing surface course or pavement for which partial removal of that surface or pavement is required, except when such saw cuts are within three (3) feet of an existing joint the limits of removal shall be extended to the existing joint.



BENCHMARKS

BM #1 COW DISC, LITTLE ARKANSAS RIVER & 13TH STREET NE COR. OF BRIDGE ELEV. 1311.33 M.S.L.

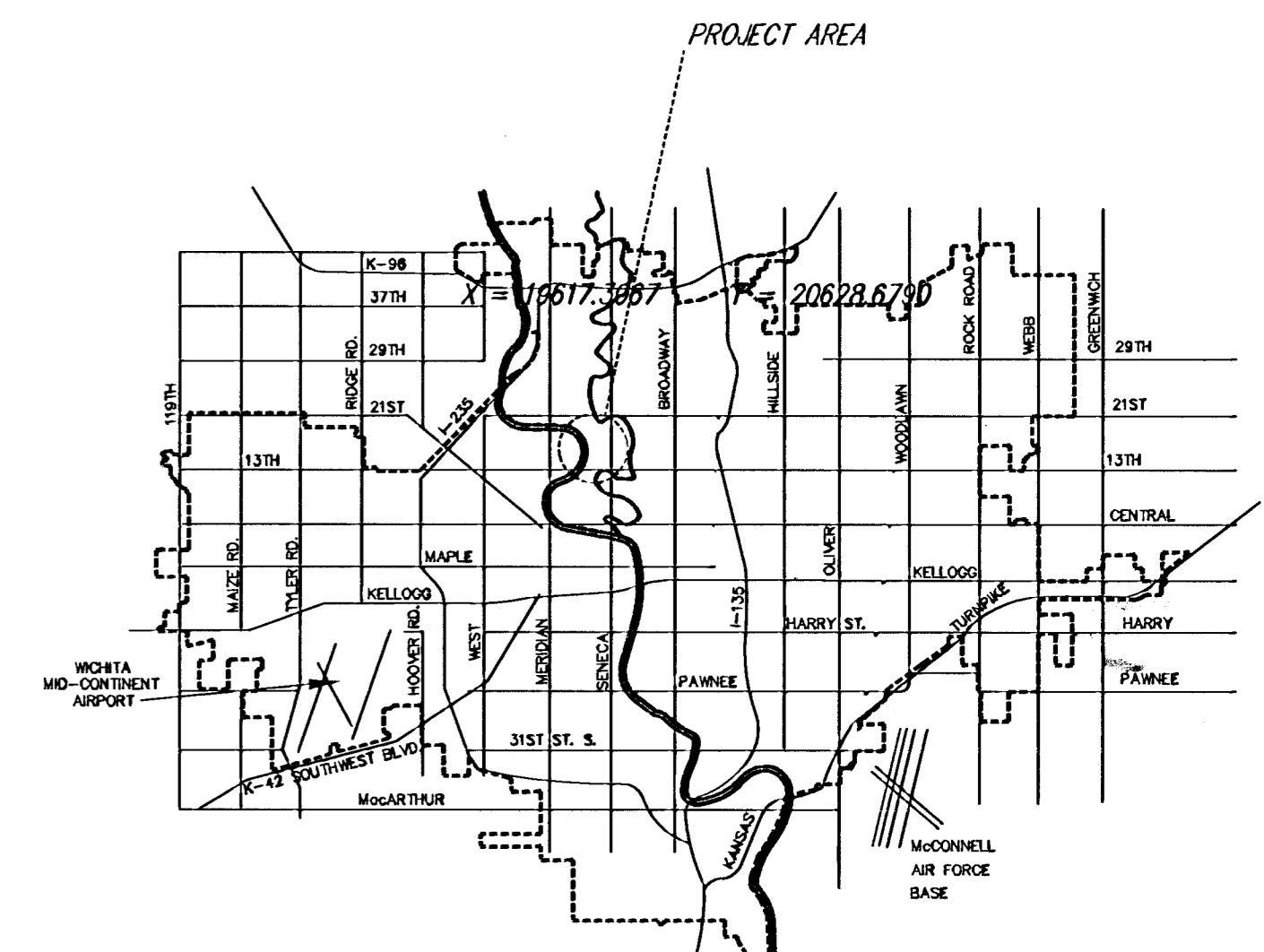
BM #2 SQ. CUT ON TOP OF CURB 7'± EAST OF E END OF NE CURB RETURN OF ALLEY, N. SIDE OF 15TH STREET BETWEEN ARKANSAS AND JACKSON. ELEV. 1307.09 M.S.L.

APPROVED AS NOTED
BY CITY ENGINEER OF WICHITA

Sanitary Sewers _____
 Storm Sewers ACT 8/30/05
 Driveway Approaches _____
 Water Mains _____
 Paving _____

NOTE TO CONTRACTORS

Inspection and testing for this project are to be provided by a Licensed Consulting Engineering Firm under contract with the Owner/Developer. Said inspection to be in accordance with the City of Wichita standard construction engineering practices and certified by a Licensed Professional Engineer. No work shall be performed in dedicated easements or public right-of-way by the Contractor without such inspection, nor shall any work be commenced without written authorization by the City Engineer.

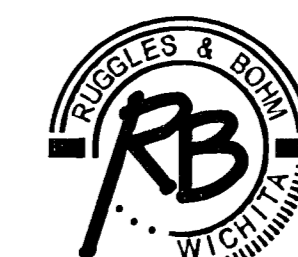


SCALE: 1"=60'

CITY OF WICHITA, KANSAS
JIM ARMOUR, P.E., CITY ENGINEER

Donna C. Kapp
 LICENSED SURVEYOR
 8-29-05

As built 10-18-05



Ruggles & Bohm, P.A.
 Engineering, Surveying, Land Planning
 924 North Main (316) 264-8008
 Wichita, Kansas 67203 (316) 264-4821 fax
 www.rbkansas.com E-mail: info@rbkansas.com