

STORM WATER SEWER IMPROVEMENT

TO SERVE

THE OPPORTUNITY PROJECT

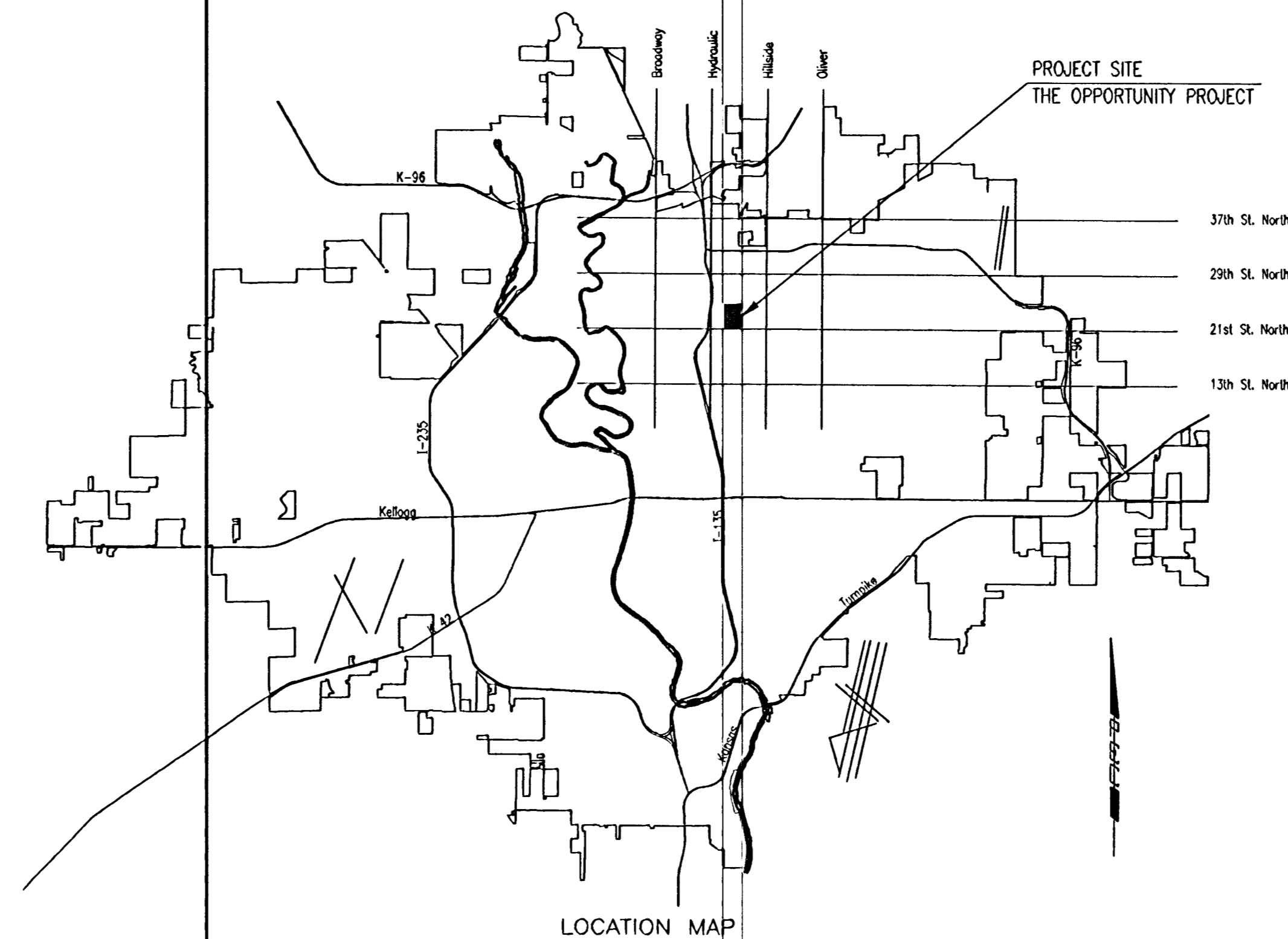
CITY OF WICHITA PRIVATE PROJECT NO. 1598 PPS (607861)

CITY OF WICHITA, KANSAS

JAMES L. ARMOUR, P.E.-CITY ENGINEER

INDEX OF SHEETS

CV4.1	TITLE SHEET
CV4.2	KEY MAP
CV4.3	SWS LINE NO. 1 & 1A
CV4.4	SWS LINE NO. 1, 1C & 1D
CV4.5	SWS LINE NO. 1B
CV4.6-CV4.7	SWS LINE NO. 2
CV4.8	STANDARD AREA INLET DETAILS
CV4.9	MANHOLE FRAME AND COVER DETAILS
CV4.10	SHALLOW MANHOLES TYPE 'P' & 'C'
CV5.1-CV5.4	SOIL EROSION BMP DETAILS
CV6.1	PLAT



APPROVED AS NOTED
By CITY ENGINEER OF WICHITA

Sanitary Sewers _____

Storm Sewers See 10/19/05

Driveway Approaches _____

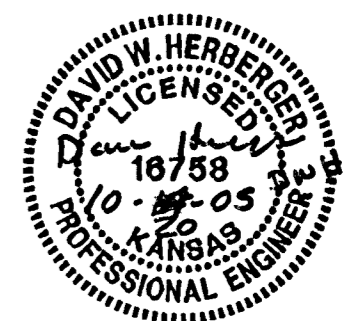
Paving _____

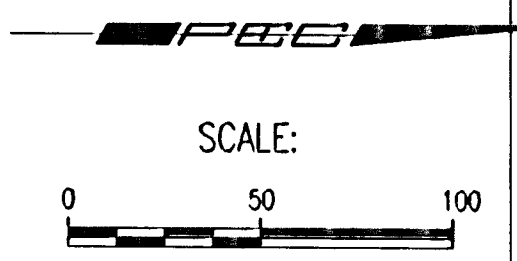
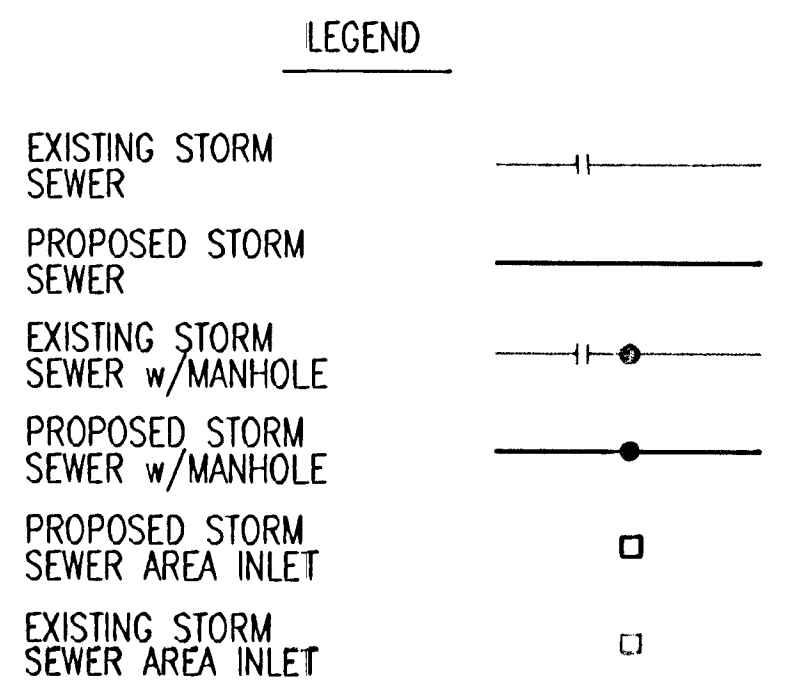
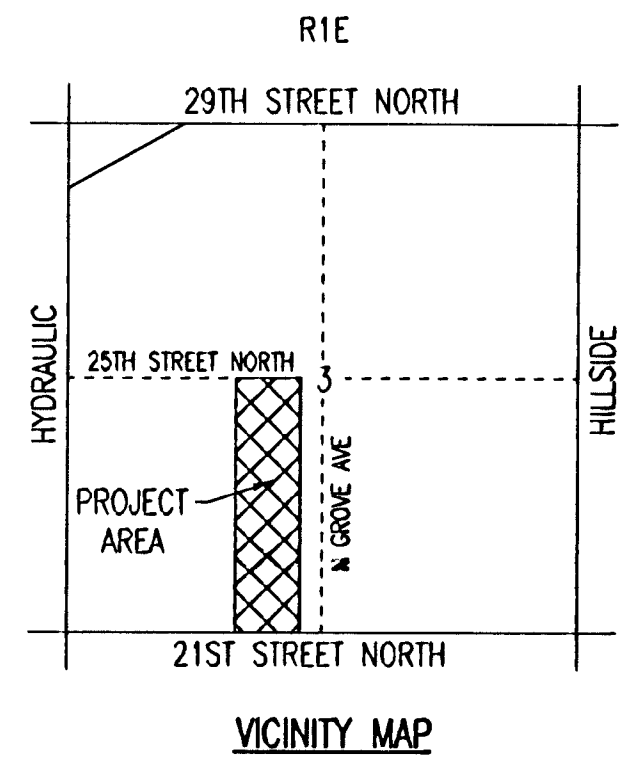
NOTE TO CONTRACTOR

INSPECTION AND TESTING FOR THIS PROJECT IS TO BE PROVIDED BY A LICENSED CONSULTING ENGINEERING FIRM CONTRACTED BY THE OWNER/DEVELOPER. SAID INSPECTION TO BE IN ACCORDANCE WITH THE CITY OF WICHITA STANDARD CONSTRUCTION ENGINEERING PRACTICES AND CERTIFIED BY A LICENSED PROFESSIONAL ENGINEER. NO WORK SHALL BE PERFORMED IN DEDICATED EASEMENTS OR PUBLIC RIGHT-OF-WAY BY THE CONTRACTOR UNTIL SUCH INSPECTION IS ARRANGED FOR AND REQUIRED BONDS HAVE BEEN SUBMITTED TO AND APPROVED BY THE CITY. NOR SHALL ANY WORK BE COMMENCED IN DEDICATED EASEMENTS OR PUBLIC RIGHT-OF-WAY WITHOUT WRITTEN AUTHORIZATION BY THE CITY ENGINEER. IMPROVEMENTS PERFORMED UNDER THIS PROJECT SHALL NOT BE ACCEPTED BY THE CITY UNTIL ALL APPLICABLE DOCUMENTATION HAS BEEN SUBMITTED TO THE CITY ENGINEER. THIS MAY INCLUDE: RECORD DRAWINGS, INSPECTION LOGS, TEST DOCUMENTATION, TV TAPES, AND A CERTIFICATE OF COMPLETION. THE ABOVE SHALL BE PERFORMED BY THE CONSULTING FIRM CONTRACTED TO INSPECT THIS PROJECT.

OCTOBER 2005

PLANS PREPARED BY
PROFESSIONAL ENGINEERING CONSULTANTS, P.A.
ENGINEERS
WICHITA, KANSAS





CONTROL POINTS:

HORIZONTAL CONTROL ESTABLISHED BY BAUGHMAN CO. FROM BOUNDARY AND TOPO. 1996. ASSUMED N=5,000.0000, E=5,000.0000 AT S.E. COR. S.W. 1/4 SEC. 3, T27S, R1E - N90° W TO S.W. COR. SW 1/4 SEC. 3, T27S, R1E

C.P. #1003 N-7,598.3267, E-4,427.1107

1. SET #4 BAR 15'± N. TO ENTRANCE TO FIELD
2. 20'± E. OF CENTER MADISON STREET
3. 15'± S. OF CENTER 25TH STREET NORTH

ELEV.=132.90 CITY DATUM

BENCHMARKS:

BM #1:
CHISELED "d" ON BACK OF CURB ON THE NORTH SIDE OF 21ST ST. N. ±50' EAST OF G. JARDINE NORTH BOUND.
ELEV. = 127.54 CITY DATUM

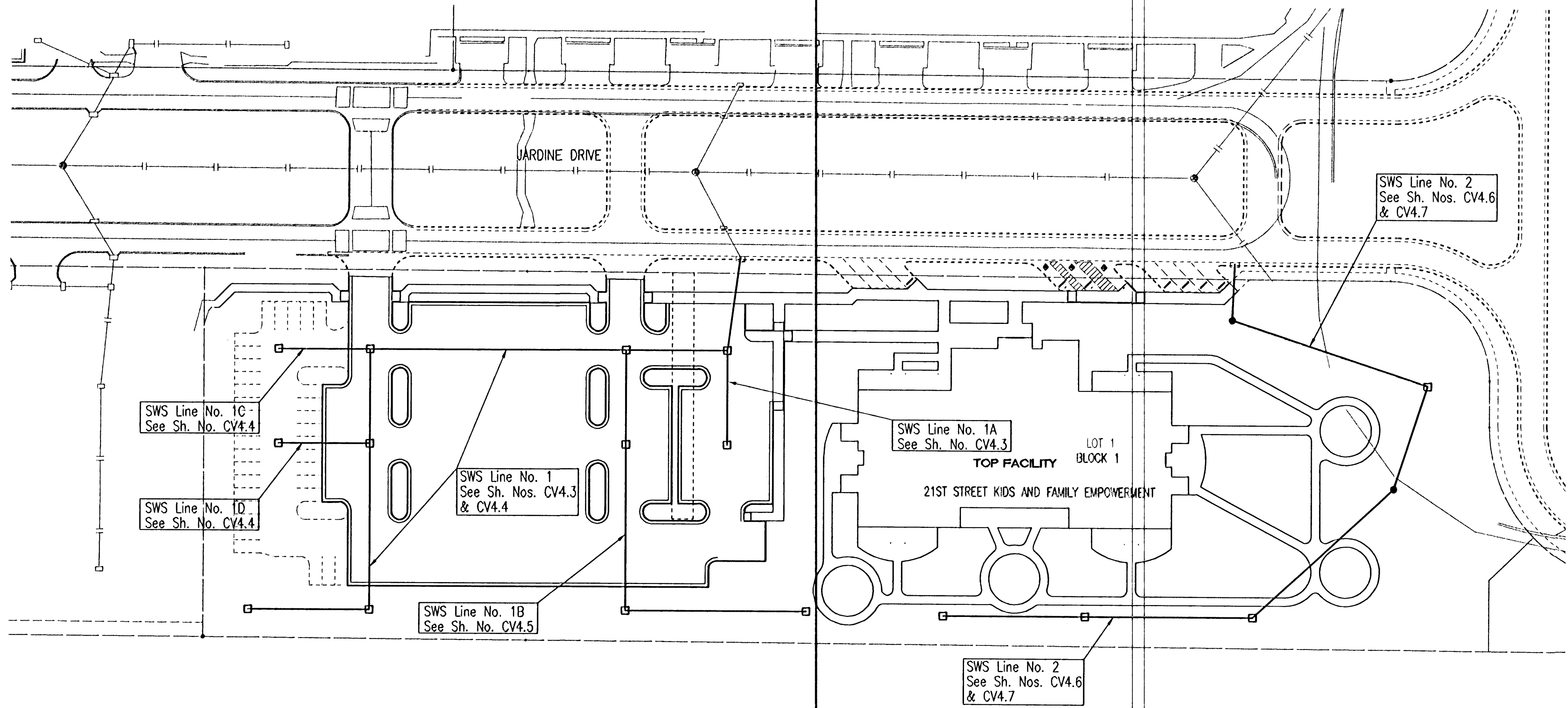
BM #2:
3" T POST 0.5' BELOW GROUND CENTERED BETWEEN JARDINE NORTH AND SOUTH BOUND ±60' NORTH OF G. CROSS OVER ROAD ±620' NORTH OF G. 21ST ST. NORTH
ELEV. = 127.275 CITY DATUM

BM #3:
T POST ±5' BELOW SURFACE, ±20' NORTH OF NORTH BACK OF CURB 23RD ST. ± G. JARDINE.
ELEV. = 128.630 CITY DATUM

BM #4:
T POST BELOW SURFACE, ±20' NORTH OF NORTH BACK OF CURB OF 24TH ST., ± G. JARDINE EXTENDED.
ELEV. = 130.265 CITY DATUM

BM #5:
CHISELED "d" TOP BACK OF CURB AT N.E. CORNER OF MADISON & 25TH ST. N. NORTH CURB RETURN AT NORTH CORNER OF WHEEL CHAIR RAMP.
ELEV. = 133.115 CITY DATUM

BUILDINGS EXIST ON SITE AND ARE TO DEMOLISHED BY OTHERS. VARIOUS UTILITY SERVICES MAY EXIST ON SITE IN SERVICE OR ABANDONED IN PLACE. STORM SEWER CONTRACTOR SHALL USE EXTREME CAUTION AND COORDINATE PHASING OF WORK WITH THE GENERAL CONTRACTOR. REPORT ALL UTILITY CONFLICTS AND/OR FOUNDATION OBSTRUCTIONS TO THE ENGINEER.



GENERAL NOTES

EXISTING UTILITIES AND THEIR LOCATION, AS SHOWN ON THE PLANS, REPRESENT THE BEST INFORMATION OBTAINABLE FOR DESIGN. LOCATION INFORMATION HAS BEEN OBTAINED FROM THE VARIOUS UTILITY COMPANIES AND IS EITHER FROM COMPANY RECORD DRAWINGS OR COMPANY PROVIDED FIELD LOCATIONS. THE CONTRACTOR WILL BE REQUIRED TO WORK AROUND EXISTING UTILITIES WITHIN THE RIGHT-OF-WAY WHICH DO NOT CONFLICT WITH PROPOSED CONSTRUCTION. CONTRACTOR SHALL SATISFY HIMSELF OF SUBSURFACE CONDITIONS PRIOR TO BIDDING.

TREES AND SHRUBS IN PUBLIC RIGHT-OF-WAY WHICH ARE IN DIRECT CONFLICT WITH PROPOSED NEW CONSTRUCTION SHALL BE REMOVED BY THE CONTRACTOR WITH THE ENGINEER'S APPROVAL. TREES AND SHRUBS WHICH ARE NOT IN DIRECT CONFLICT WITH PROPOSED NEW CONSTRUCTION SHALL BE SAVED AND PROTECTED FROM DAMAGE.

RUBBLE FROM THE REMOVAL OF MISCELLANEOUS STRUCTURES SHALL BE DISPOSED OFF SITE BY THE CONTRACTOR.

ALL DISPOSAL SITES MUST BE APPROVED BY THE KANSAS DEPARTMENT OF HEALTH AND ENVIRONMENT. MATERIAL EITHER STOCKPILED OR DISPOSED OF IN A FLOOD PLAN WOULD REQUIRE A KANSAS STATE BOARD OF AGRICULTURE PERMIT. ANY MATERIAL DUMPED IN WATERS OF THE UNITED STATES OR WETLANDS IS SUBJECT TO U.S. CORPS OF ENGINEERS PERMITTING REGULATIONS. ANY MATERIAL BURIED OR STOCKPILED BEYOND APPROVED CONSTRUCTION LIMITS WOULD REQUIRE ADDITIONAL ARCHEOLOGICAL INVESTIGATIONS UNLESS BURIED IN A PREVIOUSLY APPROVED BORROW LOCATION.

CONTRACTOR SHALL PROVIDE A MINIMUM SEVENTY-TWO (72) HOUR ADVANCE NOTICE (EXCLUDING WEEKENDS AND HOLIDAYS) PRIOR TO BEGINNING ANY EXCAVATION TO KANSAS ONE-CALL SYSTEM, A UTILITY LOCATION SERVICE, AT (316) 687-2470 TO REQUEST THE FOLLOWING UTILITY COMPANIES TO LOCATE ALL EXISTING LINES WITHIN THE PROJECT AREA: K.G.S. GAS, WESTAR ENERGY, SBC, COX COMMUNICATIONS, CITY OF WICHITA SEWER MAINTENANCE AND CITY OF WICHITA WATER DEPARTMENT.

THE CONTRACTOR SHALL BE RESPONSIBLE FOR PRESERVING PROPERTY IRONS. THE CONTRACTOR WILL BE REQUIRED TO RE-ESTABLISH ANY PROPERTY IRONS WHICH ARE DAMAGED OR DESTROYED BY HIS CONSTRUCTION OPERATIONS. SUCH IRONS SHALL BE RE-ESTABLISHED BY A LICENSED LAND SURVEYOR IN ACCORDANCE WITH STATE LAWS.

ALL AREAS DISTURBED DURING CONSTRUCTION SHALL BE SEED, FERTILIZED, AND MULCHED ACCORDING TO CITY OF WICHITA STANDARDS AND SPECIFICATIONS.

ALL CONSTRUCTION MATERIALS AND PROCEDURES SHALL BE IN ACCORDANCE WITH THE CITY OF WICHITA STANDARDS AND SPECIFICATIONS FOR STORM SEWER CONSTRUCTION.

ALL LAWN/TURF AREAS DISTURBED BY CONSTRUCTION OF THE PROPOSED IMPROVEMENTS SHALL BE SEED PER THE SPECIFICATIONS AND RESTORED WITH THE SAME GRASS AS EXISTING. RESTORATION OF DISTURBED AREAS SHALL INCLUDE, BUT NOT BE LIMITED TO, TOP SOIL PREPARATION, SEEDING, MULCH, AND/OR RESEEDING. ALL SEEDING WORK SHALL BE IN ACCORDANCE WITH THE CITY OF WICHITA STANDARD SPECIFICATIONS AND THE CITY OF WICHITA ADMINISTRATIVE REGULATION NO. AR78 WHICH GOVERNS CLEANUP AND RESTORATION OR REPLACEMENT FOLLOWING CONSTRUCTION.

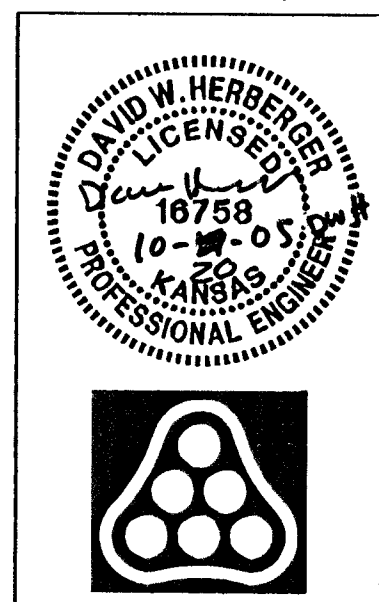
THE CONTRACTOR SHALL GIVE ALL PROPERTY OWNERS AND/OR TENANTS OF DEVELOPED PROPERTY ADJUTING THE CONSTRUCTION OF THIS PROJECT A MINIMUM OF TEN (10) DAYS ADVANCE NOTICE PRIOR TO START OF CONSTRUCTION.

THE WATER DEPARTMENT SHALL FIELD LOCATE WATER VALVES ONE TIME DURING CONSTRUCTION WHEN REQUESTED BY THE CONTRACTOR. IT SHALL BE THE CONTRACTOR'S RESPONSIBILITY TO PRESERVE SUCH FIELD LOCATIONS DURING THE CONSTRUCTION PROCESS. WATER VALVES, WATER VALVE BOXES OR FIRE HYDRANTS DAMAGED DURING CONSTRUCTION SHALL BE REPAIRED BY THE CONTRACTOR AT HIS OWN EXPENSE.

CUTS MADE IN PAVED SURFACES ON PUBLIC PROPERTY WILL BE REPAIRED BY THE CITY'S CONTRACTOR AND CHARGED AGAINST THE CONTRACTOR. UNIT REPAIR PRICES ARE AVAILABLE FROM THE CITY AT 268-4418. A SURCHARGE MAY BE APPLICABLE. CALL 268-4418 FOR DETAILS. REPAIR COSTS TO BE PAID PRIOR TO RELEASE OF WATER SERVICE IF WATER SERVICE IS AFFECTED.

EXCESS EXCAVATED MATERIAL AND EXCESS TOPSOIL SHALL BE STOCKPILED OR WASTED WITHIN THE PLAT LIMITS. THE CONTRACTOR SHALL CONTACT THE OWNER'S ENGINEER AT 262-2691 FOR INFORMATION PERTAINING TO THE ACCEPTABLE LOCATIONS FOR THE DISPOSITION OF EXCESS MATERIAL. WASTE MATERIAL SHALL BE GRADED SMOOTH AND SLOPED TO DRAIN.

ALL MANHOLE AND INLET TOPS SHALL BE ADJUSTED TO MATCH FLUSH WITH FINAL GRADES.



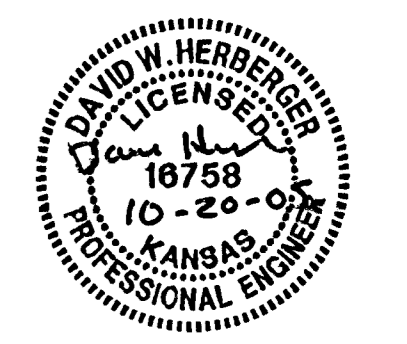
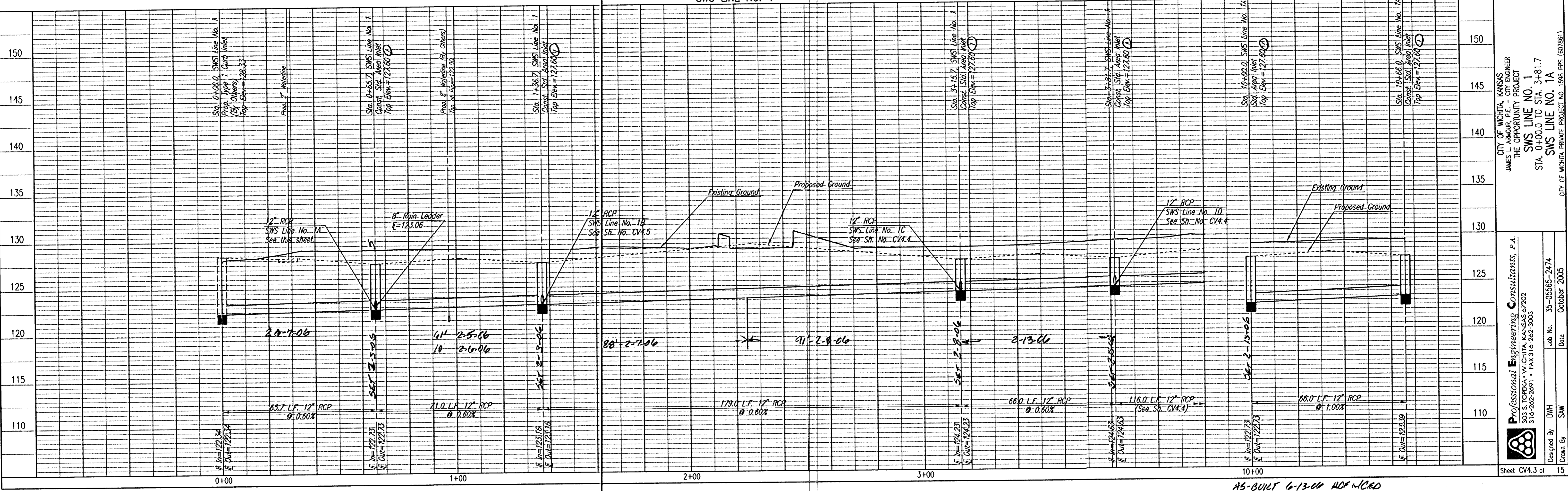
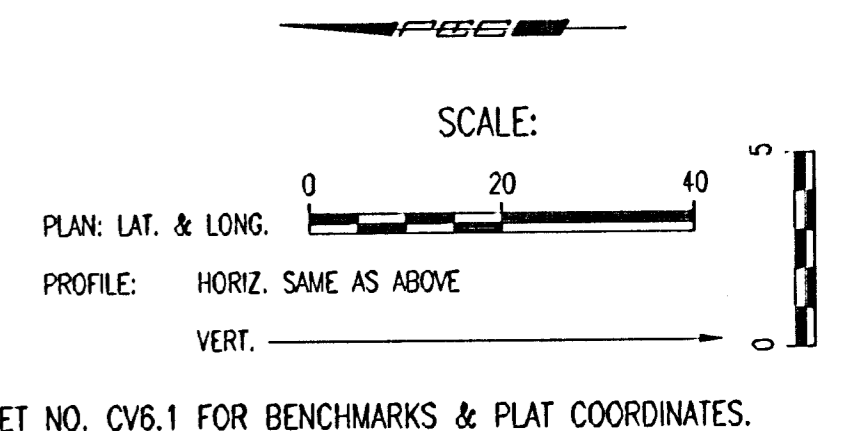
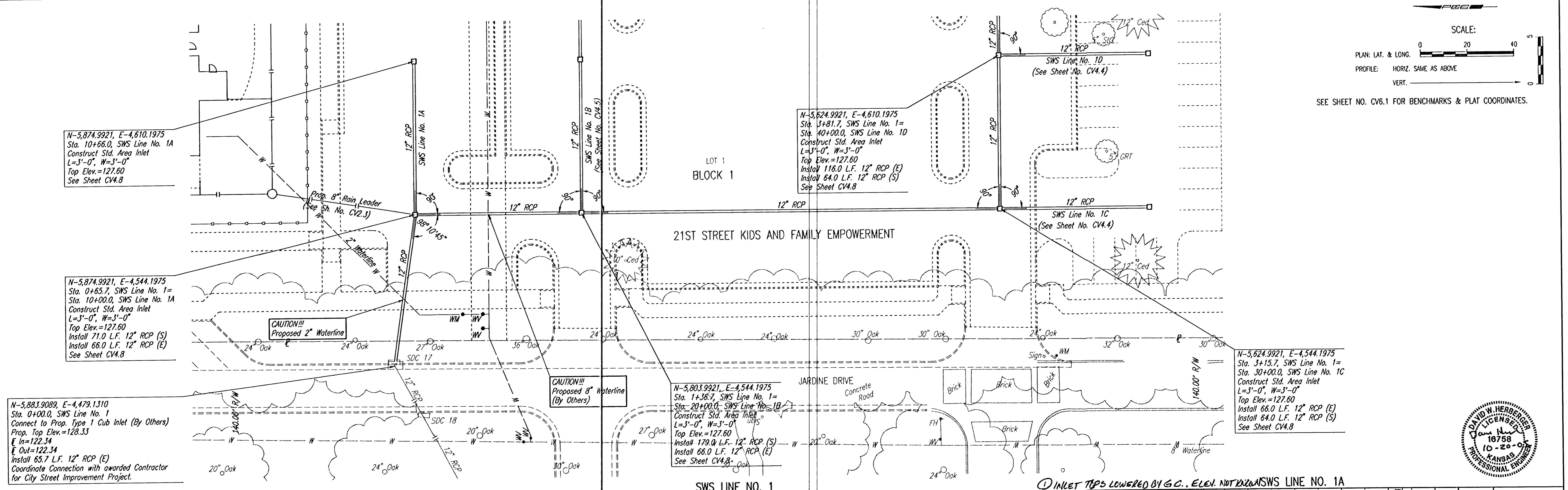
No.	Revision	By	Date
CITY OF WICHITA, KANSAS JAMES L. ARMOUR, P.E. - CITY ENGINEER THE OPPORTUNITY PROJECT KEY MAP CITY OF WICHITA PROJECT NO. 1538 PPS (607861) Professional Engineering Consultants, P.A. 303 S. TOPEKA • WICHITA, KANSAS 67202 316-262-2691 • FAX 316-262-3003			
Designed by	DWH	Job No.	05565
Drawn by	SAW	Date	October 2005
			SH. CV4.2 of 15

15-BUILT 10-13-06 HOF/CLD

DATE: _____ BY: _____
 CHECKED: _____
 PLAN

DATE: _____ BY: _____
 CHECKED: _____
 PROFILE

DSNR: DWH OPER. SAW SCALE: 1"=20.00
 J:\SENOUT\2005\05565\to City 10-06-05\DWG\CV4.3 SWS Ln 1 & 1A 10-19-2005 11:06:24 am



CITY OF WICHITA, KANSAS
 JAMES L. ARMOUR, P.E. - CITY ENGINEER
 THE OPPORTUNITY PROJECT
SWS LINE NO. 1
 STA. 0+00.0 TO STA. 3+81.7
SWS LINE NO. 1A
 STA. 0+00.0 TO STA. 10+66.0

Professional Engineering Consultants, P.A.
 303 S. TORBKA • WICHITA, KANSAS 67202
 316-262-2691 • FAX 316-262-3003

Designed By: DWH Job No. 35-05565-2474
 Drawn By: SAW Date: October 2005

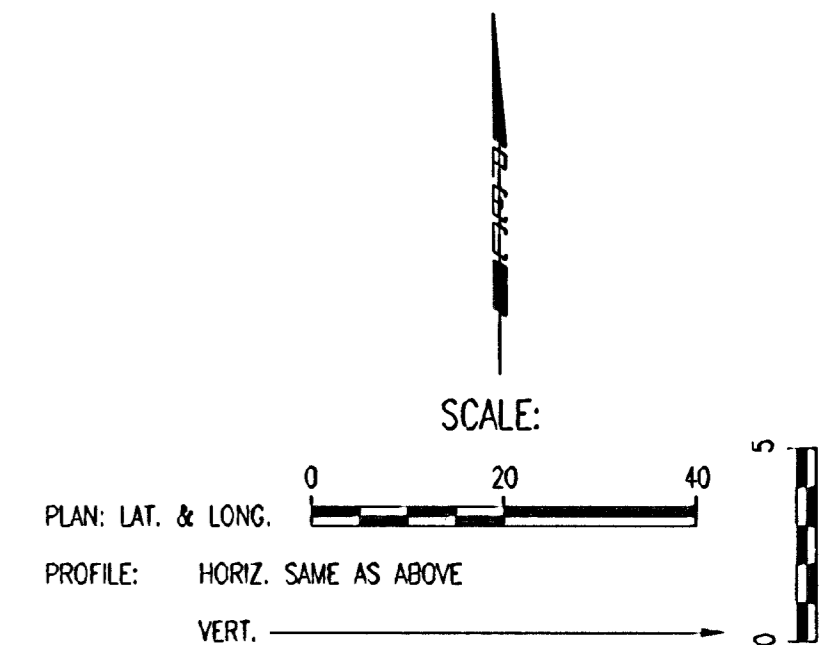
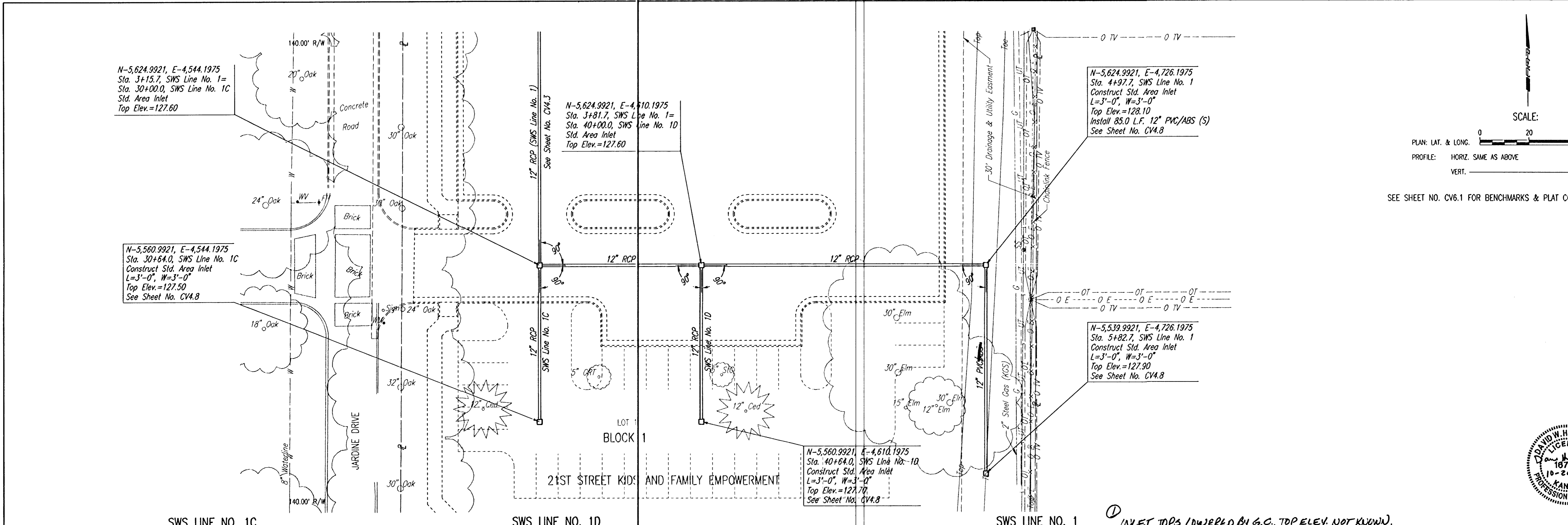
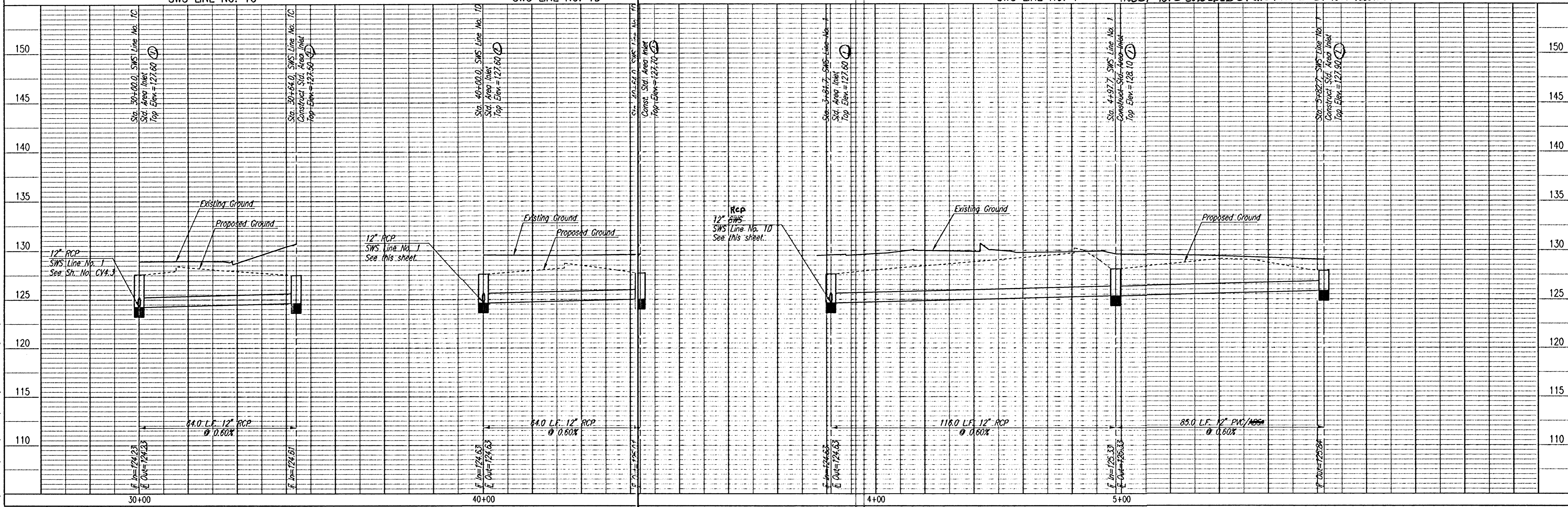
Sheet CV4.3 of 15

AS-BUILT 6-13-00 HOF W/CED

PLAN	CHECKED	DATE
	CHECKED	

PROFILE	CHECKED	DATE
	CHECKED	

DSNR: DMH OPER: SAW SCALE: 1"=20.00
 \S:\SENTOUT\2005\05565\to City 10-06-05\DWG\CIV4.4 SWS Ln 1 .1C.1D 10-19-2005 10:05:30 am



SEE SHEET NO. CV6.1 FOR BENCHMARKS & PLAT COORDINATES.



Professional Engineering Consultants, P.A.
 303 S. TOPEKA - WICHITA, KANSAS 67202
 316-262-2891 • FAX 316-262-3689

Designed By: DMH
 Drawn By: SAW

Job No. 35-05565-2474
 Date: October 2005

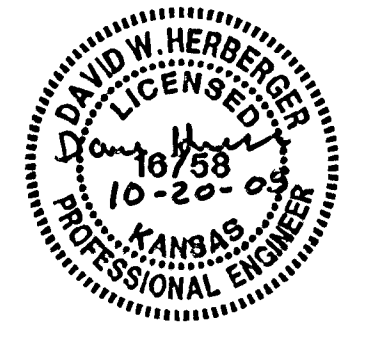
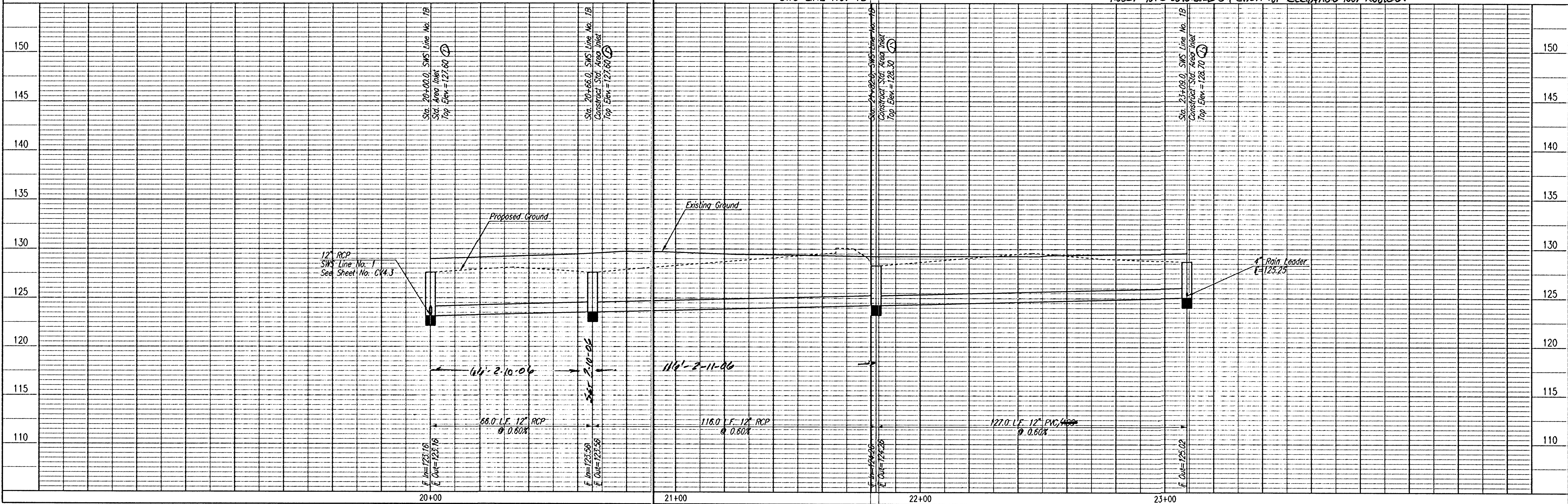
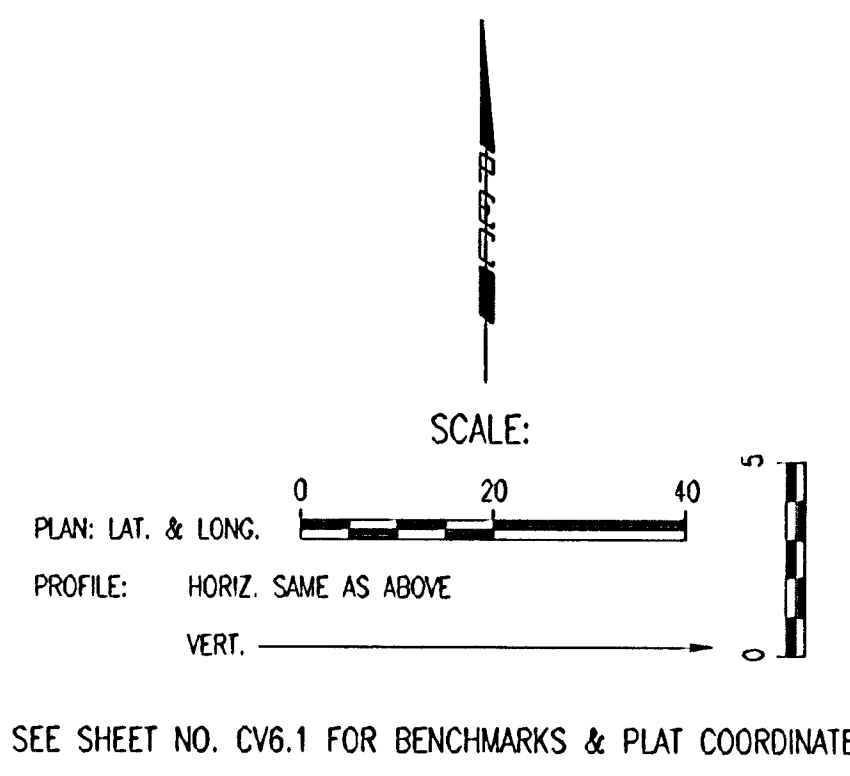
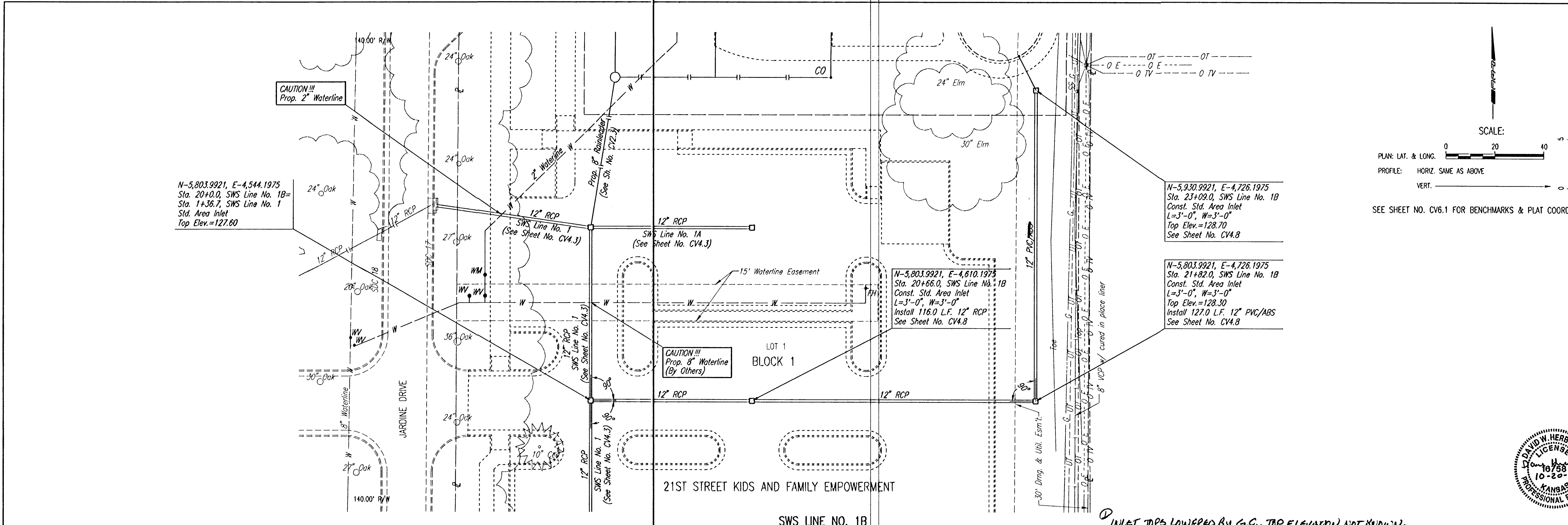
CITY OF WICHITA, KANSAS
 JAMES L. ARMOUR, P.E. - CITY ENGINEER
 THE OPPORTUNITY PROJECT
 SWS LINE NO. 1
 STA. 3+81.7 TO STA. 5+32.7
 SWS LINE NO. 1C & 1D
 CITY OF WICHITA PRIVATE PROJECT NO. 1588 PPS (607861)

AS-BUILT 6-13-06 HOFNICOED

DATE	
BY	
CHECKED	
CHECKED	
PLAN	

DATE	
BY	
CHECKED	
CHECKED	
PROFILE	

DSNR: DMH OPER. S.W. SCALE: 1"=20.00
 J:\SEN\OUT\2005\05565\to City 10-06-05\DWG\CV4.5 SWS Ln. 1B 10-19-2005 11:06:55 am



Professional Engineering Consultants, P.A.
 303 S. TOPEKA - WICHITA, KANSAS 67202
 316-262-2691 • FAX 316-262-3003

Designed By: DMH
 Drawn By: SAW

Job No.: 35-05565-2474
 Date: October 2005

CITY OF WICHITA, KANSAS
 JAMES L. ARMOUR, P.E. - CITY ENGINEER
 THE OPPORTUNITY PROJECT
 SWS LINE NO. 1B
 STA. 20+00.0 TO STA. 23+09.0
 CITY OF WICHITA PRIVATE PROJECT NO. 1586 PPS (627861)

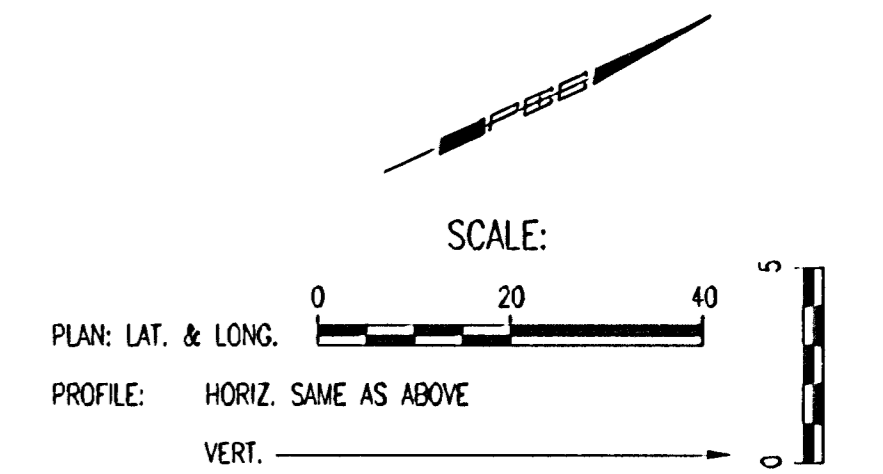
AS-BUILT 6-13-06 HOF/ALC/D

N-6,230.9228, E-4,481.5818
 Sta. 50+00.0, SWS Line No. 2
 Connect to Prop. Type 1 Cub Inlet (By Others)
 Prop. Top Elev.=129.03
 I In=122.89
 I Out=122.89
 Install 39.4 L.F. 12" PVC/ABS (SE)
 Coordinate Connection with awarded Contractor
 for City Street Improvement Project

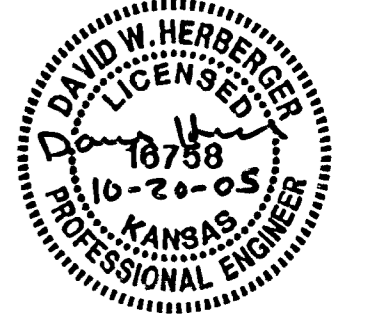
N-6,366.5847, E-4,586.6002
 Sta. 51+84.1, SWS Line No. 2
 Construct Std. Area Inlet
 L=3'-0", W=3'-0"
 Top Elev.=126.70
 Install 75.6 L.F. 12" PVC/ABS (SE)
 See Sheet No. CV4.8

N-6,366.5647, E-4,566.6002
 Sta. 52+59.7, SWS Line No. 2
 Construct Shallow Type 'P' Manhole
 Dia.=4'-0"
 Top Elev.=128.50
 Install 133.6 L.F. 12" PVC/ABS (SE)
 See Sheet No. CV4.9 & CV4.10

N-6,229.2198, E-4,520.9530
 Sta. 50+39.4, SWS Line No. 2
 Construct Shallow Type 'P' Manhole
 Dia.=4'-0"
 Top Elev.=129.35
 Install 144.7 L.F. 12" PVC/ABS (NE)
 See Sheet No. CV4.9 & CV4.10



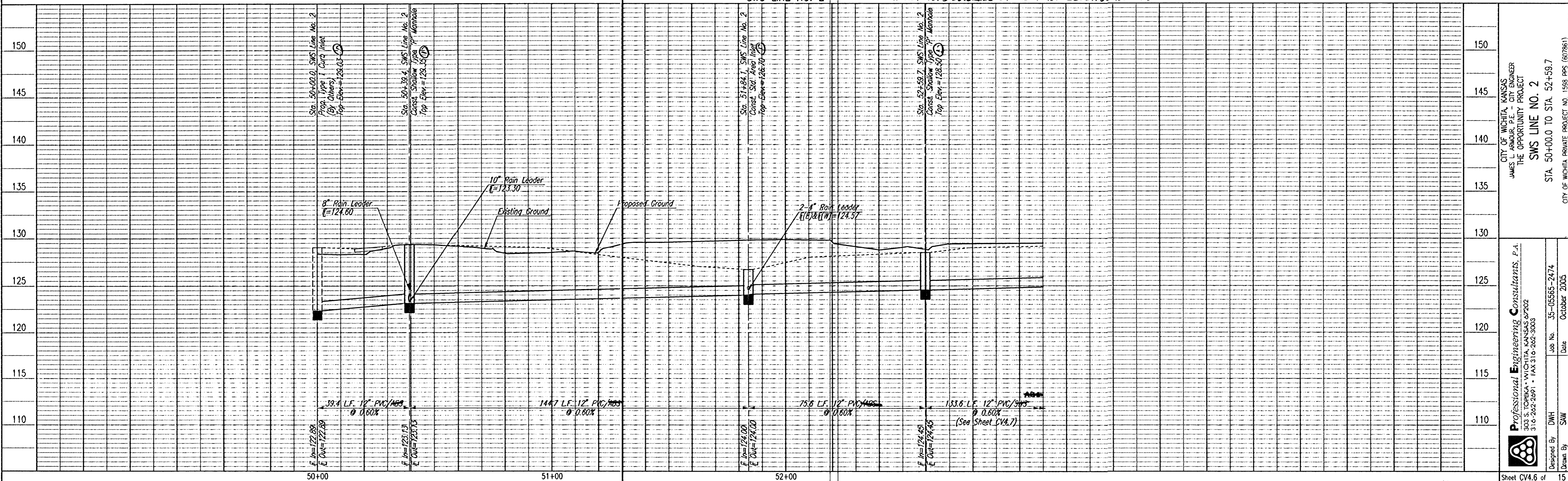
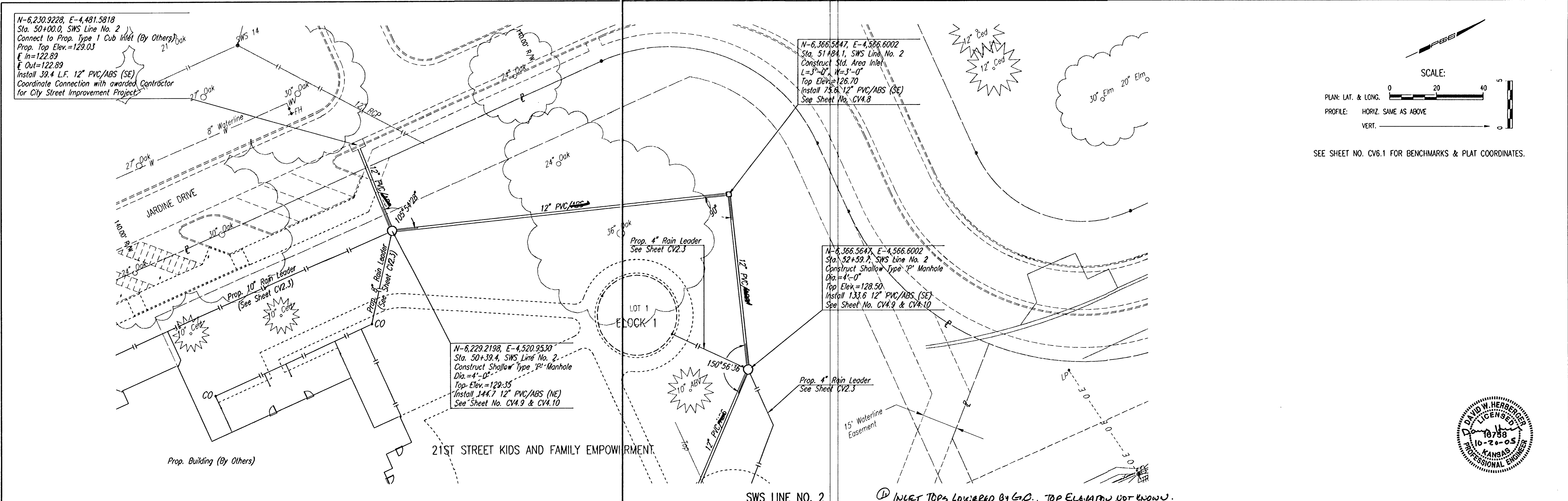
SEE SHEET NO. CV.6.1 FOR BENCHMARKS & PLAT COORDINATES.



DATE	
BY	
CHECKED	CHECKED
PLAN	

DATE	
BY	
CHECKED	CHECKED
PROFILE	

DSNR: DNH OPER: SAW SCALE: 1"=20.00
 J:\SENDOUT\2005\05565\City 10-06-05\DWG\CV4.6 SWS Ln 2 10-19-2005 10:06:30 am



CITY OF WICHITA, KANSAS
 JAMES L. ARMOUR, P.E. - CITY ENGINEER
 THE OPPORTUNITY PROJECT
SWS LINE NO. 2
 STA. 50+00.0 TO STA. 52+59.7
 CITY OF WICHITA PRIVATE PROJECT NO. 1598 PPS (607961)

Professional Engineering Consultants, P.A.
 303 S. TORREYA WICHITA, KANSAS 67202
 316-262-2691 • FAX 316-262-3003

Designed By: DNH Job No. 35-05565-2474
 Drawn By: SAW Date October 2005

Sheet CV4.6 of 15

AS-BUILT 6-13-06 HOP-NCED

