

# Turner Consulting, P.A.

C.A. # 914 Expires 12-31-06

1010 Military Ave., Baxter Springs, KS

Phone: (620) 856-5714

## GRADING & DRAINAGE PLANS

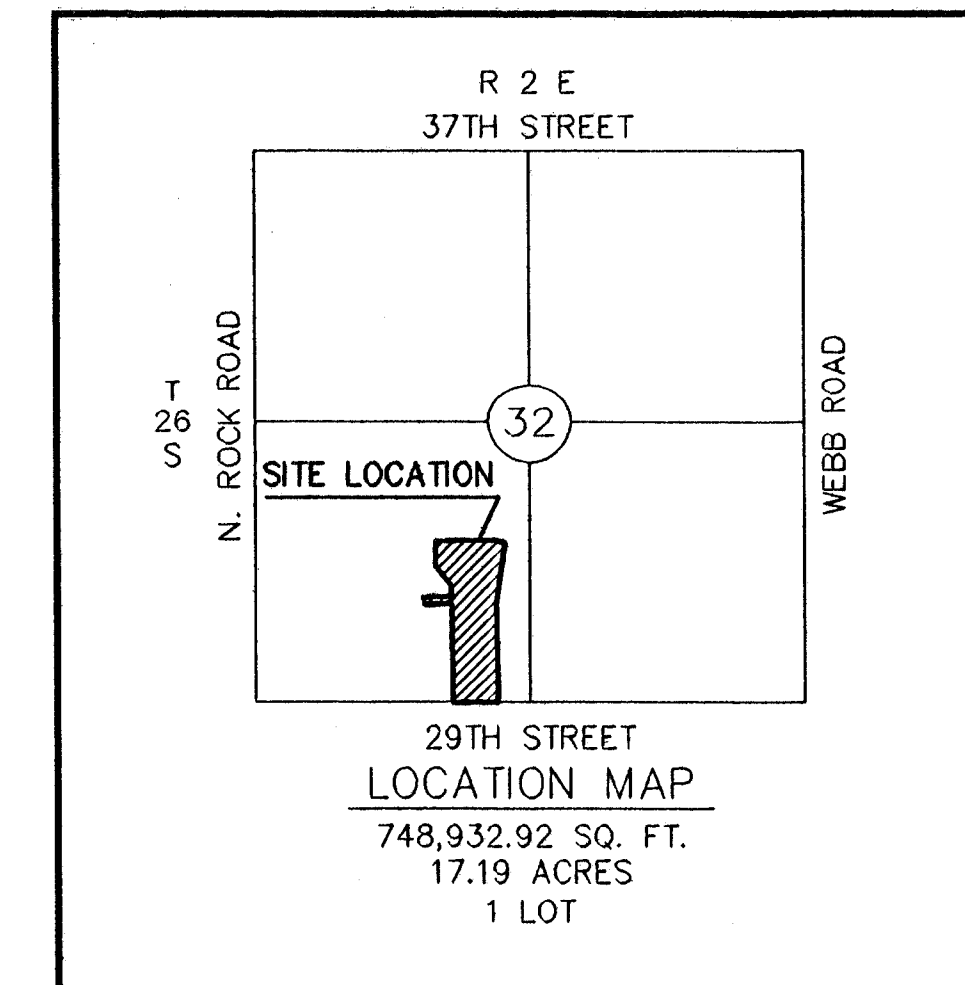
FOR

## Waterford Apartments

JAMES L. ARMOUR, P.E., CITY ENGINEER

COW PRIVATE PROJ. NO.1604 PPS (OCA:607861)

WICHITA, KANSAS



### Sheet Index

1	COVER
2	GRADING PLAN
3	DRAINAGE PLAN
4-5	STORM SEWER PLAN & PROFILE
6	EROSION CONTROL DETAIL
7	STORM SEWER DETAILS
8	PLAT OF SURVEY

### LEGAL DESCRIPTION

#### Parcel 1

Lot 16, EXCEPT that part platted as Home Design Center Third Addition, Block 1, Mediterranean Plaza, an Addition to Wichita, Sedgwick County, Kansas.

#### Parcel 2

Lot 17, Block 1, Mediterranean Plaza, an Addition to Wichita, Sedgwick County, Kansas, EXCEPT that portion platted as Home Design Center Addition, an Addition to Wichita, Sedgwick County, Kansas.

#### Parcel 3

That part of Lot 2, Block 1, Home Design Center Addition an Addition to Wichita, Sedgwick County, Kansas described as follows: Commencing at the SE corner of said Lot 2; thence N0°53'18"W along the east line of said Lot 2, 662.93 feet for a point of beginning, said point also being the NE corner of Lot 3, Block 1, Home Design Center Third Addition an Addition to Wichita, Sedgwick County, Kansas; thence continuing N0°53'18"W, 70 feet; thence S89°07'40"W, 275.03 feet to a point on a curve, said point also being the west line of said Lot 2; thence south southeasterly along a curve to the right, having a central angle of 9°54'22" and a radius of 419.25 feet, an arc distance of 72.49 feet, (having a chord length of 72.40 feet bearing S15°50'01"E) to the NW corner of said Lot 3; thence N89°07'40"E, 256.36 feet to the point of beginning.

APPROVED AS NOTED  
BY CITY ENGINEER OF WICHITA

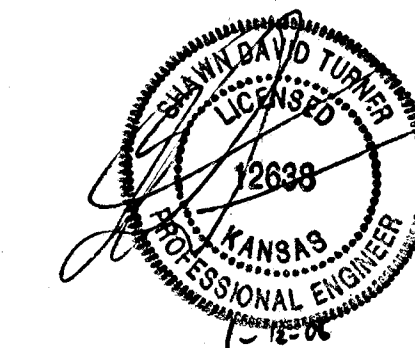
Storm Water

*JL* 11/21/06

### NOTE TO CONTRACTORS

Installation, inspection and testing for this project is to be provided by a Licensed Consulting Engineering Firm under contract with the Owner/Developer. Said inspection to be in accordance with the City of Wichita standard construction engineering practices and certified by a Licensed Professional Engineer. No work shall be performed in dedicated easements or public right-of-way by the Contractor without such inspection nor shall any work be commenced without written authorization by the City Engineer. All Construction and Materials shall comply with the City of Wichita Specifications and Standards (on file and available in the City Engineer's Office).

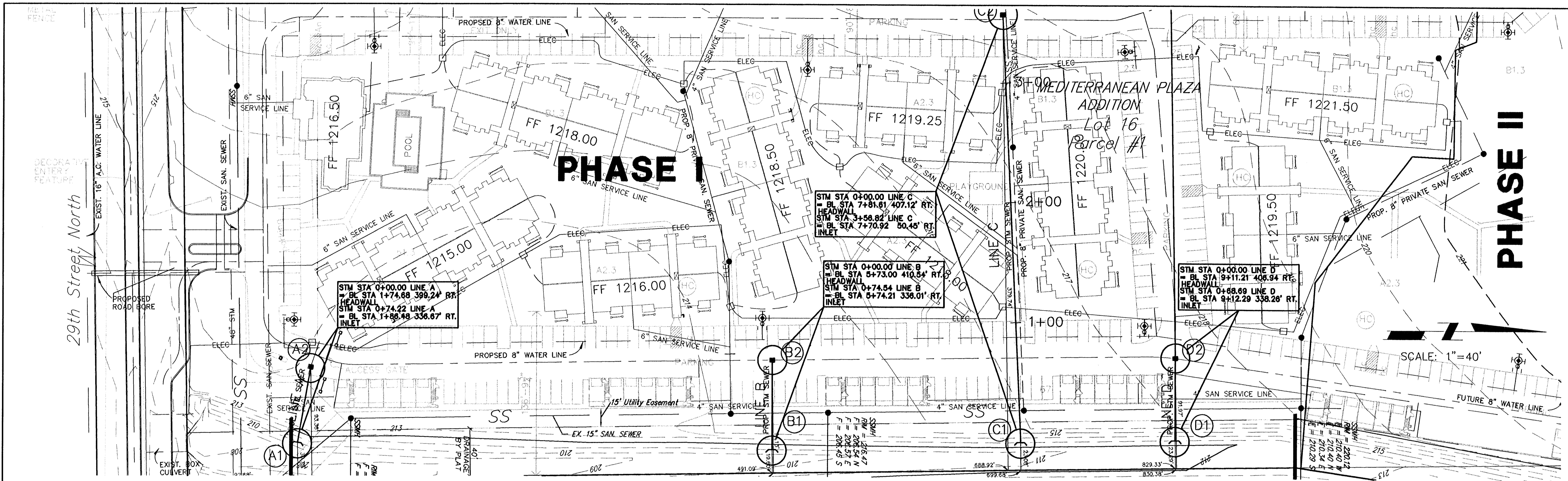
BENCH MARK: CHISLED "I" WEST END  
NORTH H.W. DOUBLE 3.5'X6' RCB  
ELEV. 215.93 (CITY DATUM)



1604 PPS (OCA:607861)





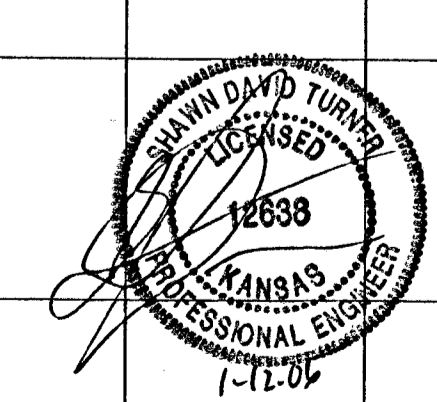


Station	Ground Line	Prop. Ground Line	Notes
0+00	215	215	12" RIP RAP 10 S.Y. Q 28.2 CFS
0+74.22	210	210	30" HDPE @ 0.55%
1+00	215	215	
0+00	215	215	12" RIP RAP 10 S.Y. Q 8.3 CFS
0+74.54	210	210	18" HDPE @ 1.00%
1+00	215	215	
0+00	215	215	12" RIP RAP 10 S.Y. Q 20.0 CFS
0+87.77	210	210	24" HDPE @ 0.84%
1+00	215	215	
3+56.82	210	210	6" WATER LINE
3+56.82	215	215	

LINE A

LINE B

LINE C



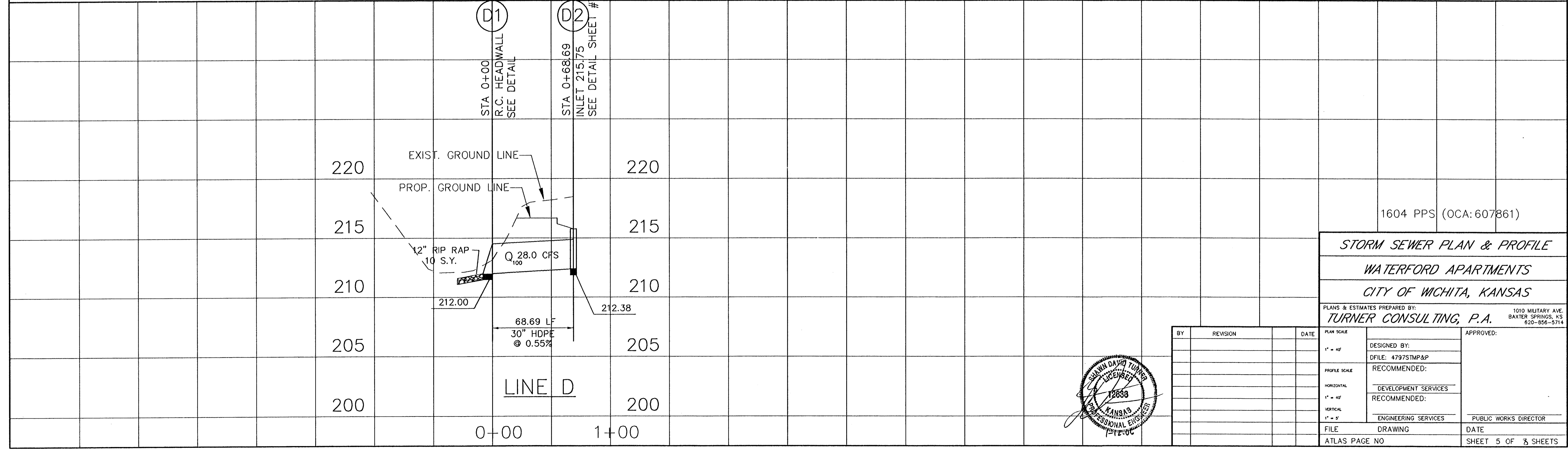
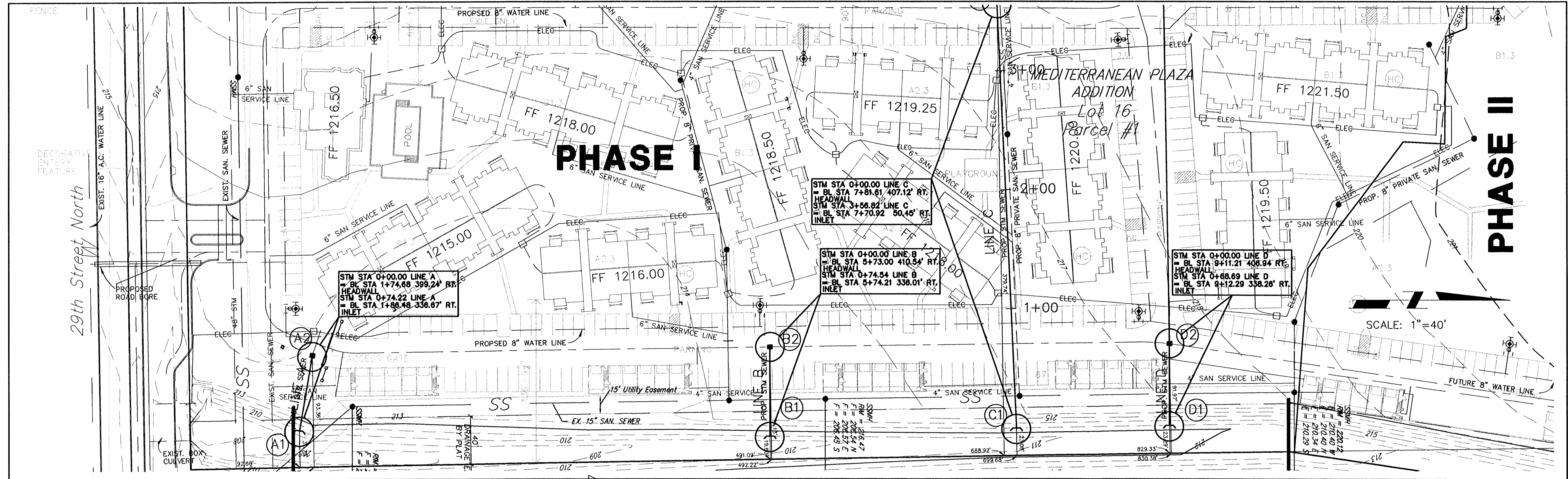
BY	REVISION	DATE

**STORM SEWER PLAN & PROFILE**  
**WATERFORD APARTMENTS**  
**CITY OF WICHITA, KANSAS**  
 PLANS & ESTIMATES PREPARED BY:  
**TURNER CONSULTING, P.A.**

1010 MILITARY AVE.  
 BAXTER SPRINGS, KS  
 620-858-5714

DESIGNED BY:  
 DFILE: 4797STMP&P  
 RECOMMENDED:  
 DEVELOPMENT SERVICES  
 RECOMMENDED:  
 ENGINEERING SERVICES

APPROVED:  
 PUBLIC WORKS DIRECTOR  
 DATE  
 SHEET 4 OF 3 SHEETS



1604 PPS (OCA:607861)

**STORM SEWER PLAN & PROFILE**  
**WATERFORD APARTMENTS**  
**CITY OF WICHITA, KANSAS**

PLANS & ESTIMATES PREPARED BY:  
**TURNER CONSULTING, P.A.**  
 1010 MILITARY AVE.  
 BAXTER SPRINGS, KS  
 620-858-5714

BY	REVISION	DATE

PLAN SCALE 1" = 40'	DESIGNED BY: DFILE: 4797STMP&P	APPROVED:
PROFILE SCALE 1" = 40'	RECOMMENDED:	PUBLIC WORKS DIRECTOR
HORIZONTAL 1" = 40'	DEVELOPMENT SERVICES RECOMMENDED:	
VERTICAL 1" = 2'	ENGINEERING SERVICES RECOMMENDED:	DATE
FILE	DRAWING	DATE
ATLAS PAGE NO	SHEET 5 OF 3 SHEETS	

