

PRIVATE STORM WATER AND SANITARY SEWER IMPROVEMENTS

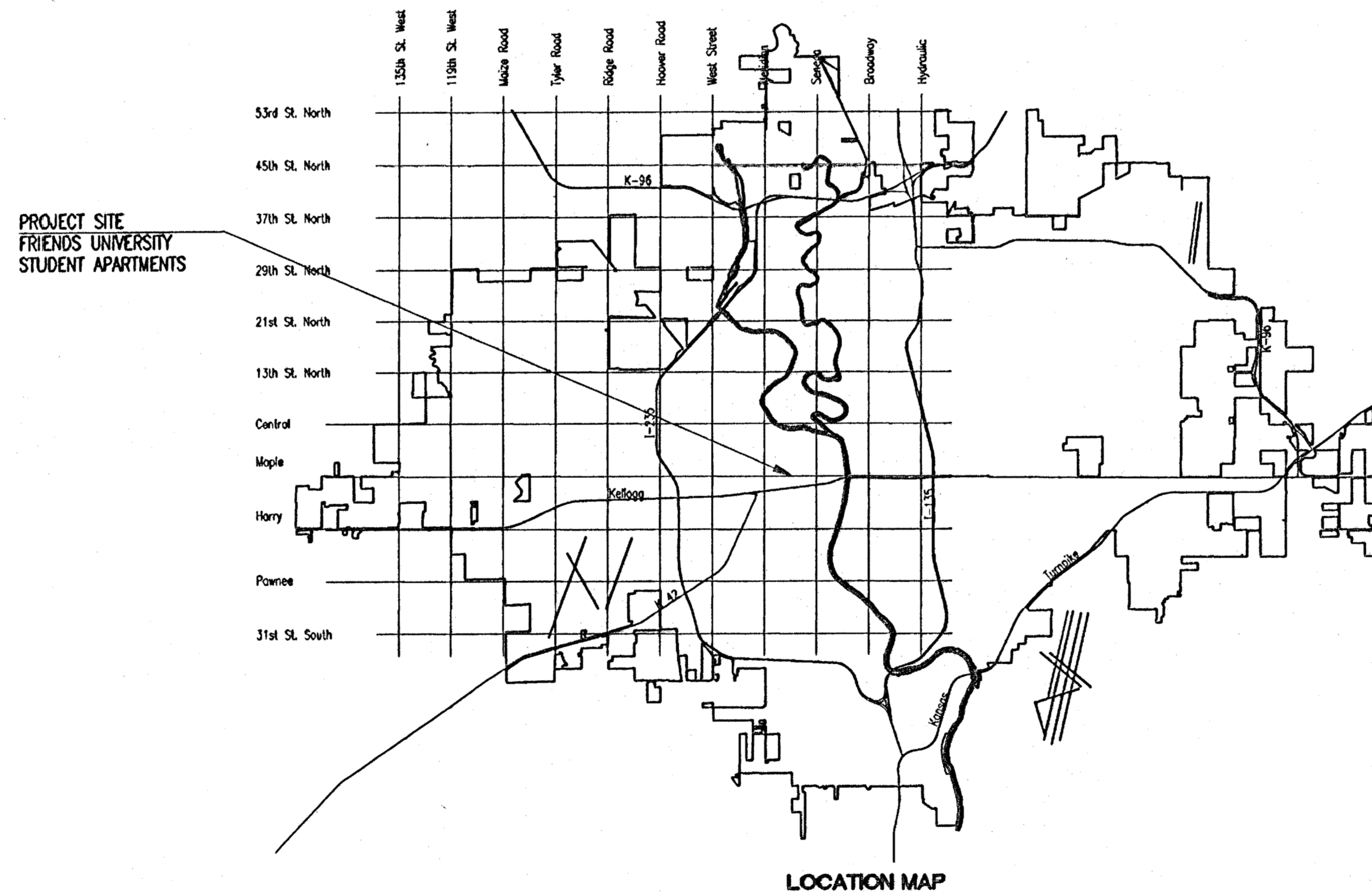
TO SERVE

UNIVERSITY PLACE ADDITION, EVEN LOTS 28-48 FRIENDS UNIVERSITY STUDENT APARTMENTS

PRIVATE PROJECT NO. 1627 PPS (607861)
CITY OF WICHITA, KANSAS
JAMES L. ARMOUR, P.E. - CITY ENGINEER

INDEX OF SHEETS

SHEET NO. 1	TITLE SHEET
SHEET NO. 2	KEY MAP AND GENERAL NOTES
SHEET NO. 3	SWS PLAN AND PROFILE
SHEET NO. 4	SS PLAN AND PROFILE
SHEET NO. 5	AREA INLET DETAILS
SHEET NO. 6	TYPE 'A' & 'B' SHALLOW MANHOLES
SHEET NO. 7	TYPE 'P' & 'C' SHALLOW MANHOLES
SHEET NO. 8	REINFORCED CONCRETE MANHOLE
SHEET NO. 9	MANHOLE FRAME & COVER DETAILS
SHEET NO. 10-13	SOIL EROSION BMP DETAILS (SEE ARCH. SET, SHEETS CV7.1-CV7.4)



LOCATION MAP

APPROVED AS NOTED
By CITY ENGINEER OF WICHITA

Sanitary Sewers VH 2/3/06
Storm Sewers LCZ 2/3/06

NOTE TO CONTRACTOR

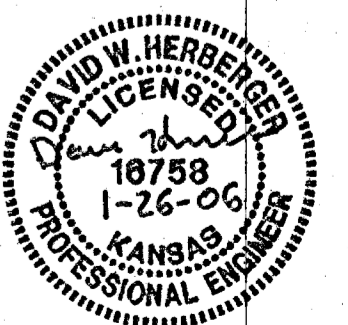
INSPECTION AND TESTING FOR THIS PROJECT IS TO BE PROVIDED BY A LICENSED CONSULTING ENGINEERING FIRM CONTRACTED BY THE OWNER/DEVELOPER. SAID INSPECTION TO BE IN ACCORDANCE WITH THE CITY OF WICHITA STANDARD CONSTRUCTION ENGINEERING PRACTICES AND CERTIFIED BY A LICENSED PROFESSIONAL ENGINEER. NO WORK SHALL BE PERFORMED IN DEDICATED EASEMENTS OR PUBLIC RIGHT-OF-WAY BY THE CONTRACTOR UNTIL SUCH INSPECTION IS ARRANGED FOR AND REQUIRED BONDS HAVE BEEN SUBMITTED TO AND APPROVED BY THE CITY. NOR SHALL ANY WORK BE COMMENCED IN DEDICATED EASEMENTS OR PUBLIC RIGHT-OF-WAY WITHOUT WRITTEN AUTHORIZATION BY THE CITY ENGINEER. IMPROVEMENTS PERFORMED UNDER THIS PROJECT SHALL NOT BE ACCEPTED BY THE CITY UNTIL ALL APPLICABLE DOCUMENTATION HAS BEEN SUBMITTED TO THE CITY ENGINEER. THIS MAY INCLUDE: RECORD DRAWINGS, INSPECTION LOGS, TEST DOCUMENTATION, TV TAPES, AND A CERTIFICATE OF COMPLETION. THE ABOVE SHALL BE PERFORMED BY THE CONSULTING FIRM CONTRACTED TO INSPECT THIS PROJECT.

Inspection of storm only

AS-BUILT
5/31/06
Date K.E. Miller
[Signature]
Signed

JANUARY 2006

PLANS PREPARED BY
PROFESSIONAL ENGINEERING CONSULTANTS, P.A.
ENGINEERS
WICHITA, KANSAS



N-10,033.5858, E-10,037.5378
 @ MENTOR STREET=
 @ GLENN STREET

GENERAL NOTES

- ALL ELEVATIONS SHOWN ARE CITY OF WICHITA DATUM. (U.S.G.S. - 1187.4 = CITY DATUM)
- CONTRACTOR WILL BE REQUIRED TO PROVIDE A MINIMUM ADVANCE NOTICE OF FORTY-EIGHT (48) HOURS TO UTILITY COMPANIES PRIOR TO STARTING ANY EXCAVATION AS FOLLOWS:
 KANSAS ONE-CALL 687-2470
 THE CONTRACTOR MUST NOTIFY THE FOLLOWING IN CASE OF AN EMERGENCY:
 COX COMMUNICATIONS 262-0661
 KANSAS GAS SERVICE 832-3169
 WESTAR ENERGY 383-8600
 AQUILA 946-0096
 SBC 1(800)-870-8390
 CITY OF WICHITA WATER DEPARTMENT 262-6000
 CITY OF WICHITA SEWER MAINTENANCE 262-6000

SCALE: 1" = 20'

LEGEND

- EXISTING STORM SEWER
- PROPOSED STORM SEWER MANHOLE
- PROPOSED AREA INLET
- EXISTING SANITARY SEWER
- EXISTING SANITARY SEWER MANHOLE
- PROPOSED SANITARY SEWER MANHOLE
- PROPOSED SANITARY SEWER CLEANOUT

- UNDERGROUND UTILITY SERVICE LINES AND OVERHEAD UTILITY POLE LINES ARE TO BE ADJUSTED AS NECESSARY BY OTHERS PRIOR TO CONSTRUCTION UNLESS THE PLANS SPECIFICALLY CALL FOR THEIR ADJUSTMENT BY THE CONTRACTOR. EXISTING UTILITIES AND THEIR LOCATION, AS SHOWN ON THE PLANS, REPRESENT THE BEST INFORMATION OBTAINABLE FOR DESIGN. LOCATION INFORMATION HAS BEEN OBTAINED FROM THE VARIOUS UTILITY COMPANIES AND IS EITHER FROM COMPANY RECORD DRAWINGS OR COMPANY PROVIDED FIELD LOCATIONS. THE CONTRACTOR WILL BE REQUIRED TO WORK AROUND EXISTING UTILITIES WITHIN THE RIGHT-OF-WAY WHICH DO NOT CONFLICT WITH PROPOSED CONSTRUCTION. CONTRACTOR SHALL SATISFY HIMSELF OF SUBSURFACE CONDITIONS PRIOR TO BIDDING.
- TREES AND SHRUBS IN PUBLIC RIGHT-OF-WAY WHICH ARE IN DIRECT CONFLICT WITH PROPOSED NEW CONSTRUCTION SHALL BE REMOVED BY THE CONTRACTOR WITH THE ENGINEER APPROVAL. TREES AND SHRUBS WHICH ARE NOT IN DIRECT CONFLICT WITH PROPOSED NEW CONSTRUCTION SHALL BE SAVED AND PROTECTED FROM DAMAGE.
- RUBBLE FROM THE REMOVAL OF MISCELLANEOUS STRUCTURES SHALL BE DISPOSED OF ON SITES TO BE PROVIDED BY THE CONTRACTOR AND APPROVED BY THE ENGINEER.
- ALL DISPOSAL SITES MUST BE APPROVED BY THE KANSAS DEPARTMENT OF HEALTH AND ENVIRONMENT. MATERIAL EITHER STOCKPILED OR DISPOSED OF IN A FLOOD PLAIN WOULD REQUIRE A KANSAS STATE BOARD OF AGRICULTURE PERMIT. ANY MATERIAL DUMPED IN WATERS OF THE UNITED STATES OR WETLANDS IS SUBJECT TO U.S. CORPS OF ENGINEERS PERMITTING REGULATIONS. ANY MATERIAL BURIED OR STOCKPILED BEYOND APPROVED CONSTRUCTION LIMITS WOULD REQUIRE ADDITIONAL ARCHEOLOGICAL INVESTIGATIONS UNLESS BURIED IN A PREVIOUSLY APPROVED BORROW LOCATION.
- THE CONTRACTOR SHALL BE RESPONSIBLE FOR PRESERVING PROPERTY IRONS. THE CONTRACTOR WILL BE REQUIRED TO RE-ESTABLISH ANY PROPERTY IRONS WHICH ARE DAMAGED OR DESTROYED BY HIS CONSTRUCTION OPERATIONS. SUCH IRONS SHALL BE RE-ESTABLISHED BY A LICENSED LAND SURVEYOR IN ACCORDANCE WITH STATE LAWS.
- ALL AREAS DISTURBED DURING CONSTRUCTION SHALL BE SEEDED, FERTILIZED, AND MULCHED ACCORDING TO CITY OF WICHITA STANDARDS AND SPECIFICATIONS.
- ALL CONSTRUCTION MATERIALS AND PROCEDURES SHALL BE IN ACCORDANCE WITH THE CITY OF WICHITA STANDARDS AND SPECIFICATIONS FOR STORM AND SANITARY SEWER CONSTRUCTION.
- ALL LAWN/TURF AREAS DISTURBED BY CONSTRUCTION OF THE PROPOSED IMPROVEMENTS SHALL BE SEEDED PER THE SPECIFICATIONS OR RESTORED WITH THE SAME GRASS/SOD AS EXISTING. RESTORATION OF DISTURBED AREAS SHALL INCLUDE, BUT NOT BE LIMITED TO, TOP SOIL PREPARATION, SEEDING, MULCH, AND/OR RESEEDING. ALL SEEDING/SODDING WORK SHALL BE IN ACCORDANCE WITH THE CITY OF WICHITA STANDARD SPECIFICATIONS AND THE CITY OF WICHITA ADMINISTRATIVE REGULATION NO. AR78 WHICH GOVERNS CLEANUP AND RESTORATION OR REPLACEMENT FOLLOWING CONSTRUCTION.
- THE CONTRACTOR SHALL GIVE ALL PROPERTY OWNERS AND/OR TENANTS OF DEVELOPED PROPERTY ADJUTING THE CONSTRUCTION OF THIS PROJECT A MINIMUM OF TEN (10) DAYS ADVANCE NOTICE PRIOR TO START OF CONSTRUCTION.
- MANHOLE AND AREA INLET TOPS SHALL BE ADJUSTED FLUSH WITH PROPOSED PAVEMENT. MANHOLE TOPS IN NON-PAVED AREAS SHALL BE ADJUSTED TO 0.2' ABOVE FINAL GRADE.
- THE CONTRACTOR SHALL ERECT WARNING SIGNS, FLASHING LIGHTS, AND BARRICADES IN COMPLIANCE WITH THE MANUAL ON UNIFORM TRAFFIC CONTROL DEVICES (MUTCD). THE CONTRACTOR SHALL NOT HAVE ANY TRENCH REMAIN OPEN OVERNIGHT OR ON WEEKENDS.

BENCHMARKS

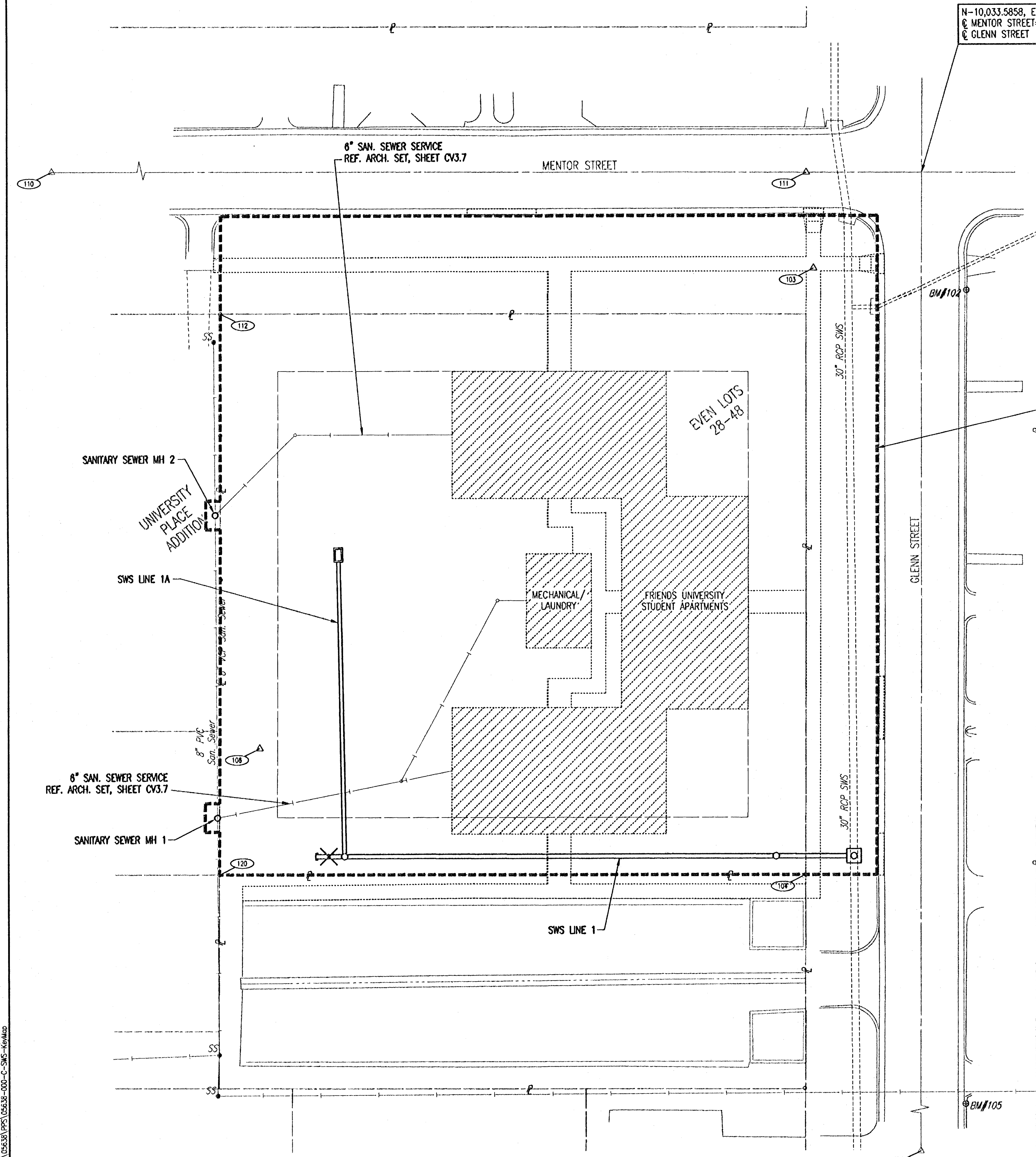
- BM#101 - Datum Benchmark
 Brass Rod in concrete under steel lid at SW corner of Glenn Street and Maple Street. 3.3' N of N face of sidewalk, 28' W of centerline of Glenn Street.
 Elev.=109.14 City Datum (not shown)
- BM#102
 Chiseled "d" on top of E curb, W of fire hydrant at SE corner of Glenn Street and Mentor Street.
 Elev.=108.89
- BM#105
 Chiseled "d" on top of E curb of Glenn Street, S side of concrete entrance to House #520, W of light pole, W of NW corner of University Friends Church, 235'± N of centerline of University Street.
 Elev.=108.52

HORIZONTAL CONTROL POINTS

- CP#103 - N-10,000.0000, E-10,000.0000
 Chiseled Cross
 In-Line, Intersection of sidewalks at SW corner of Glenn and Mentor Street
 1.00' S, S line of E-W sidewalk
 2.30' W, W line of N-S sidewalk
 Elev.=109.11
- CP#104 - N-9,788.8243, E-9,996.5013
 1/2" Iron Pipe at Property Corner
 0.10' E, Back of sidewalk
 8.20' S, N edge of church parking lot
 In-Line, S line of House #516 on E side of Glenn Street
 Elev.=108.93
- CP#106 - N-9,833.6572, E-9,807.5693
 1/2" Rebar
 8.66' NW, PK Nail in NE face of power pole
 13.78' NW, NE corner of 6' tall board fence
 53.21' S, PK Nail in NW corner of asphalt parking lot
 106.00' N, PK Nail in E face of power pole
 Elev.=108.95
- CP#110 - N-10,035.7201, E-9,591.7176
 Thumb
- CP#111 - N-10,033.7773, E-9,997.5382
 Thumb
- CP#112 - N-9,984.6196, E-9,794.5419
 1" Iron Pipe
 NW Cor. Lot 28, University Place Addition
- CP#116 - N-9,438.9359, E-10,035.1658
 Thumb
- CP#120 - N-9,789.7784, E-9,793.6815
 1/2" Iron Pipe
 SW Cor. Lot 42, University Place Addition

LEGAL DESCRIPTION

Lots 27-48, University Place Addition to Wichita



Saved: 01-26-2006 11:12:46 AM by AEE
 Plot Scale: 1"=20'-27-2006 1:25:17 PM by AEE
 G:\2005\056338\PPS\05633-000-C-SWS-KRM.dwg

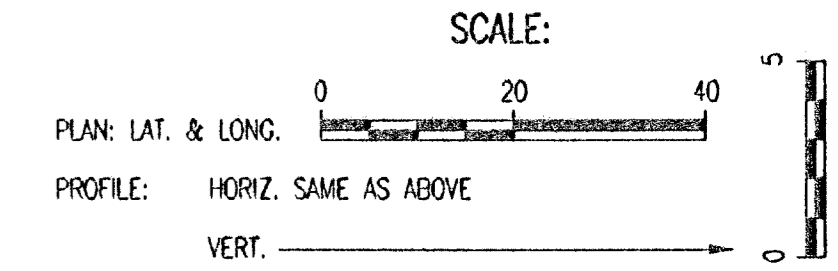
	Revision		By	Date
	CITY OF WICHITA, KANSAS FRIENDS UNIVERSITY STUDENT APARTMENTS KEY MAP AND GENERAL NOTES JAMES L. ARMOUR, P.E. - CITY ENGINEER CITY OF WICHITA PRIVATE PROJECT NO. 1627 PPS (607861)			
	Professional Engineering Consultants, P.A. 303 S. TOPEKA • WICHITA, KANSAS 67202 316-262-2691 • FAX 316-262-3003			
	Designed by	DWH	Job No.	35-05638-000
Drawn by	AEE	Date	January 2006	
			Sht. 2 of 13	

N-9,795.3606, E-9,986.3728
Sta. 0+27.00 SWS Line No. 1
Const. Shallow Type "P" MH
Dia.=5'-0"
Top Elev.=109.15
Install 149.39 L.F. 18" RCP (W)
See Sheet No. 7 of 13

N-9,795.9564, E-9,836.9836
Sta. 1+76.39 SWS Line No. 1
Const. Shallow Type "P" MH
Dia.=5'-0"
Top Elev.=109.70
Install 10.00 L.F. 18" RCP (W)
See Sheet No. 7 of 13

N-9,798.2678, E-9,836.9626
Sta. 0+00.00 SWS Line No. 1A
Sta. 1+76.39 SWS Line No. 1
Shallow Type "P" MH
Install 104.91 L.F. 15" RCP (N)

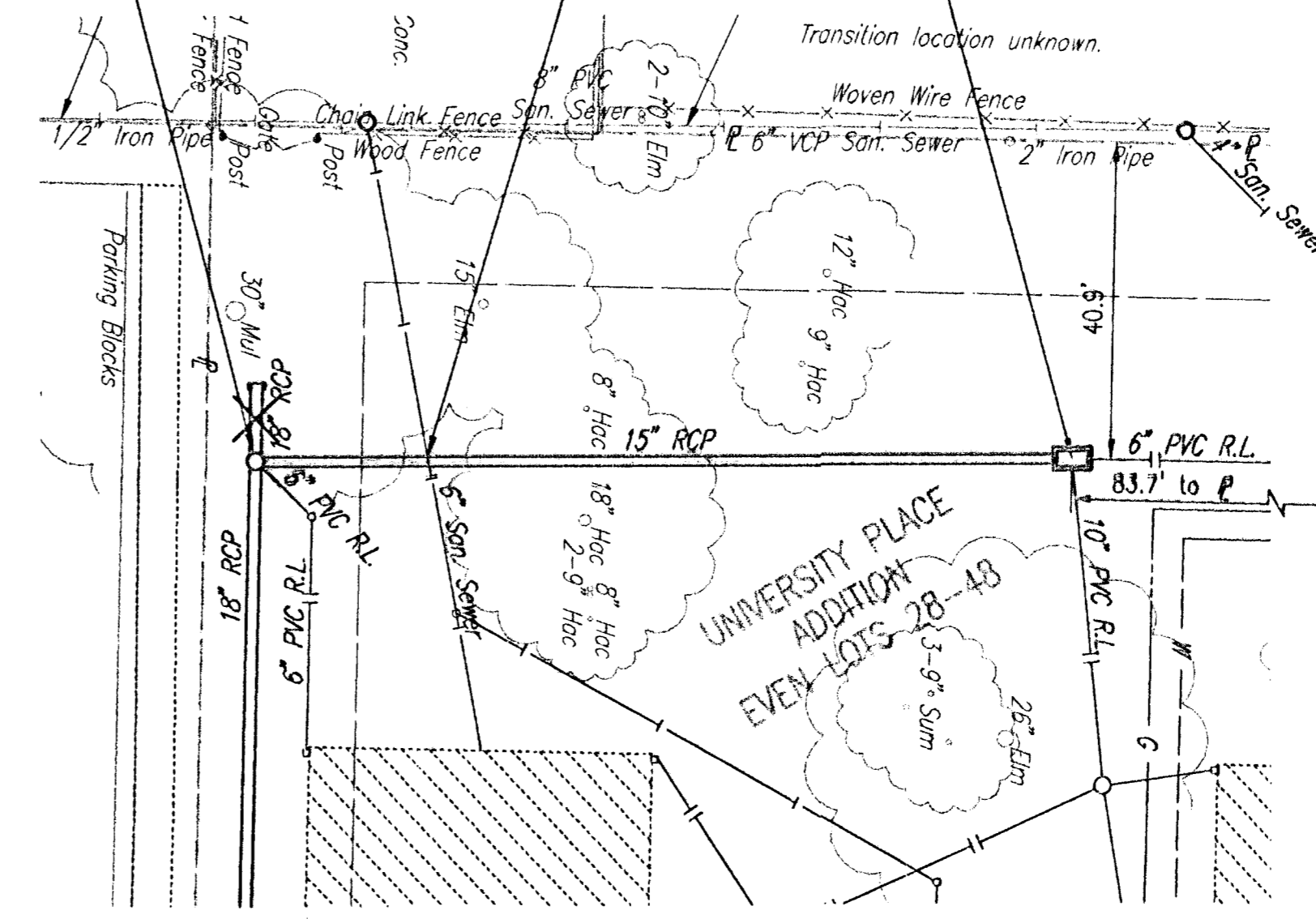
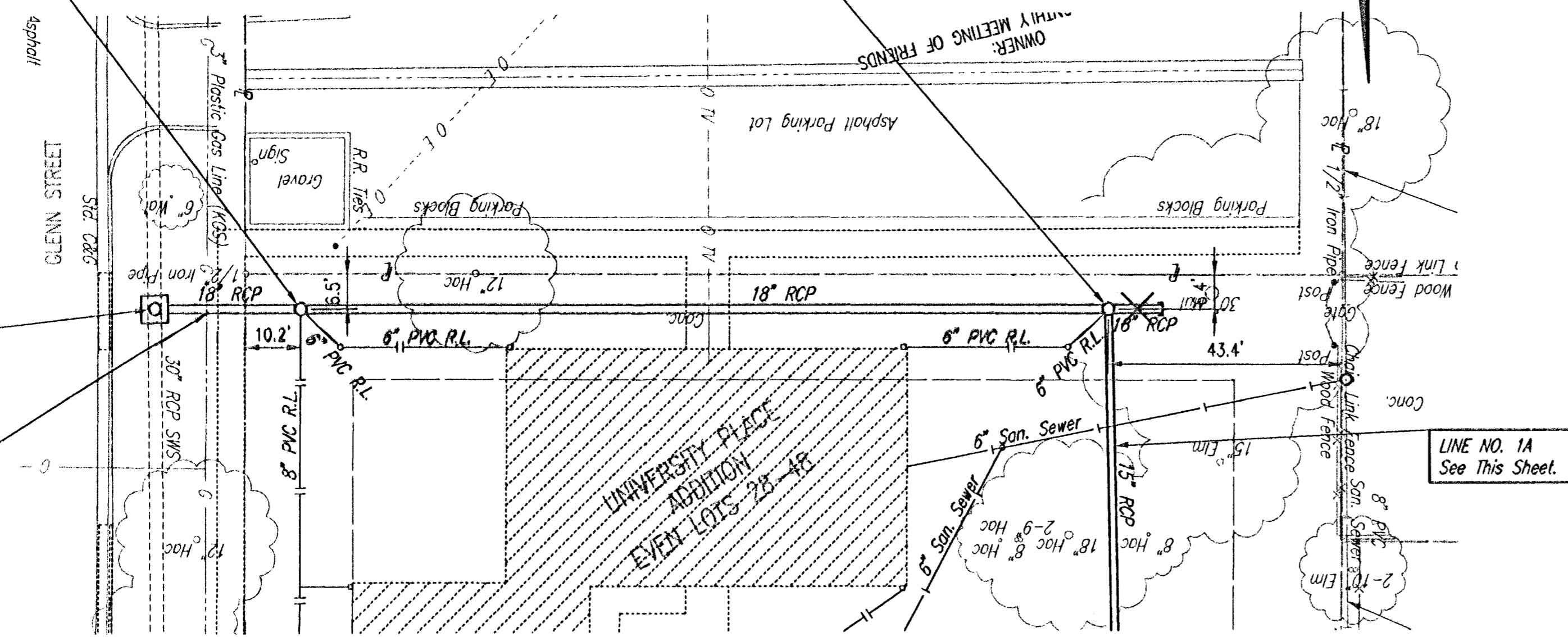
N-9,900.8493, E-9,835.0139
Sta. 1+04.91 SWS Line No. 1A
Construct Area Inlet
L=5'-0", W=3'-0"
Top Elev.=107.77-82
See Sheet No. 5 of 13



PLAN	CHECKED	CHECKED
DATE		
BY		

N-9,795.2530, E-10,013.3726
Sta. 0+00.00 SWS Line No. 1
Construct R.C. Manhole Over
Exist. 30" Pipe.
Remove Top Half of Pipe thru
Manhole. Shape Invert to
Provide Smooth Flow. Construct
a Minimum of 3' Reinforced
Concrete Encasement on all
Pipes from Manhole Wall.
L=5', W=5'
Top Elev.=108.40 (Match Exist.)
Install 27.00 L.F. 18" RCP (W)
See Sheet No. 8 of 13

CAUTION !!!
3" Gas Line
(KGS)



NOTE:
All Rain Leaders and SWS Pipe less than 12" shall be under the Office of Central Inspection's Permit and not part of City of Wichita Private Project No. 1509.

NOTE:
CONTRACTOR SHALL EXPOSE UTILITIES AND REPORT FINDINGS TO THE ENGINEER. WORK SHALL BE ACCOMPLISHED PRIOR TO ORDERING ANY MATERIALS, PIPING, OR STRUCTURES.

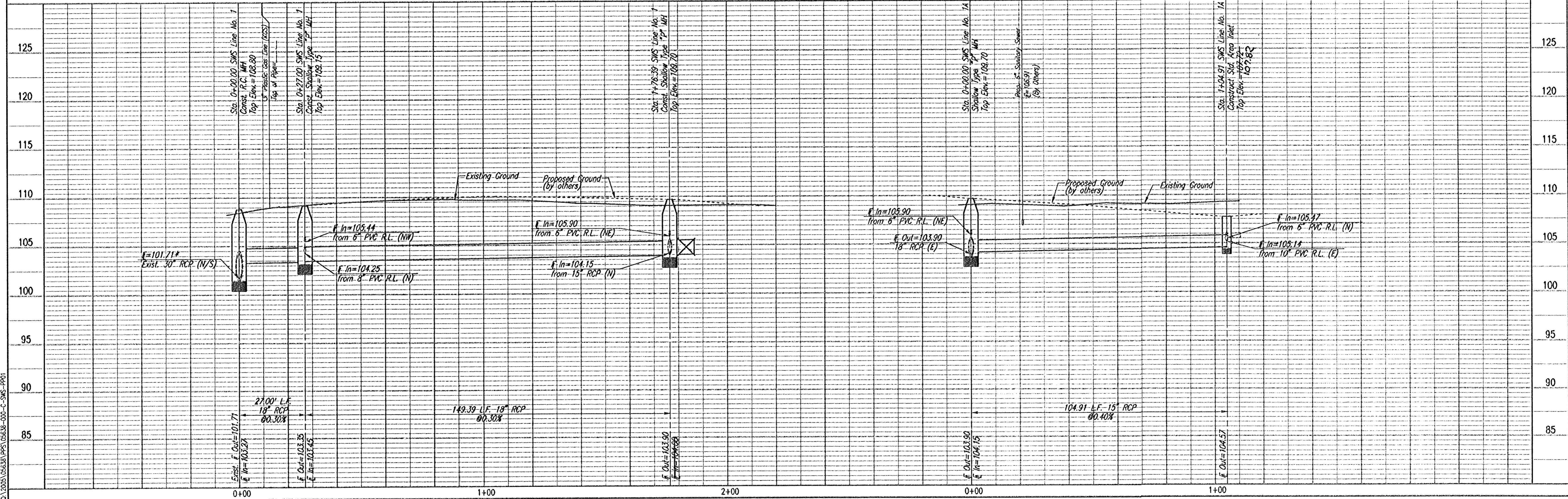
* PRIOR TO BEGINNING CONSTRUCTION, THE CONTRACTOR SHALL EXCAVATE THE EXISTING 30" SWS PIPE AT STATION 0+00.00 TO VERIFY ITS HORIZONTAL AND VERTICAL LOCATION. THE PIPE LOCATION SHALL BE REPORTED TO THE ENGINEER SO THAT ANY NECESSARY PLAN MODIFICATIONS CAN BE MADE. ANY ADDITIONAL LABOR OR MATERIALS NECESSARY TO COMPLETE THE CONNECTION SHALL BE CONSIDERED SUBSIDIARY TO THE PROJECT.



PROFILE	CHECKED	CHECKED
DATE		
BY		

SWS LINE NO. 1

SWS LINE NO. 1A



Drawn 01-26-2006 12:57:18 PM by AEE
Plot Scale 1:20 01-27-2006 1:23:14 PM by AEE
C:\0005\05638\PPS\05638-000-C-SWS-PP01

Professional Engineering Consultants, P.A.
303 S. TOPEKA - WICHITA, KANSAS 67202
316-262-2891 • FAX 316-262-3003

City of Wichita, Kansas
Friends University Student Apartments
SWS LINE NO. 1 AND LINE NO. 1A

James L. Armour, P.E. - CITY ENGINEER
City of Wichita Private Project No. 1627 PPS (607861)

Designed By: DWH
Drawn By: AEE
Job No. 35-05638-000
Date: January 2006

Sheet 3 of 13

