

GENERAL NOTES

- UNLESS SHOWN OR OTHERWISE STATED ON THESE DRAWINGS, MATERIALS AND CONSTRUCTION SHALL BE IN ACCORDANCE WITH THE CITY OF WICHITA STANDARD SPECIFICATIONS.
- THE TOPS OF INLETS AND MANHOLES AS NOTED ON THE PLANS MAY VARY SO AS TO MEET PROPOSED TOP OF CURB ELEVATIONS OR PAVEMENT ELEVATIONS. THE FIELD ENGINEER SHALL LOCATE INLETS AND MANHOLES WITH REFERENCE TO PROPOSED PAVING PLANS OF THE PERTINENT PAVING IMPROVEMENTS.
- ALL CONCRETE SHALL BE STANDARD PAVING MIX UNLESS OTHERWISE NOTED.
- THE CONTRACTOR SHALL BE RESPONSIBLE FOR PRESERVING PROPERTY IRONS. THE CONTRACTOR SHALL BE REQUIRED TO RE-ESTABLISH ANY PROPERTY IRONS WHICH ARE DAMAGED OR DESTROYED BY HIS CONSTRUCTION OPERATIONS. SUCH IRONS SHALL BE RE-ESTABLISHED BY A LICENSED LAND SURVEYOR IN ACCORDANCE WITH STATE LAWS.
- TREES TO BE REMOVED ARE MARKED . ALL TREES WHICH IN THE OPINION OF THE FIELD ENGINEER CAN BE SAVED, SHALL BE SAVED.
- CONTRACTOR SHALL NOTIFY UTILITY COMPANIES OF CONSTRUCTION SCHEDULING.
- EXISTING UTILITIES AND THEIR LOCATIONS, AS SHOWN ON THE PLANS REPRESENT THE BEST INFORMATION OBTAINABLE FOR DESIGN. LOCATION INFORMATION HAS BEEN OBTAINED FROM THE VARIOUS COMPANIES AND IS EITHER FROM COMPANY UTILITY DRAWINGS OR COMPANY PROVIDED FIELD LOCATIONS. THE PLAN LOCATIONS SHOWN ARE NOT GUARANTEED. ADDITIONAL EXISTING UTILITIES MAY ALSO BE ENCOUNTERED.
- CONTRACTOR WILL BE REQUIRED TO PROVIDE A MINIMUM ADVANCE NOTICE OF SEVENTY-TWO (72) HOURS TO UTILITY COMPANIES PRIOR TO STARTING ANY EXCAVATION AS FOLLOWS:

KANSAS ONE-CALL 800-344-7233
OR 687-2470 (LOCAL WICHITA)

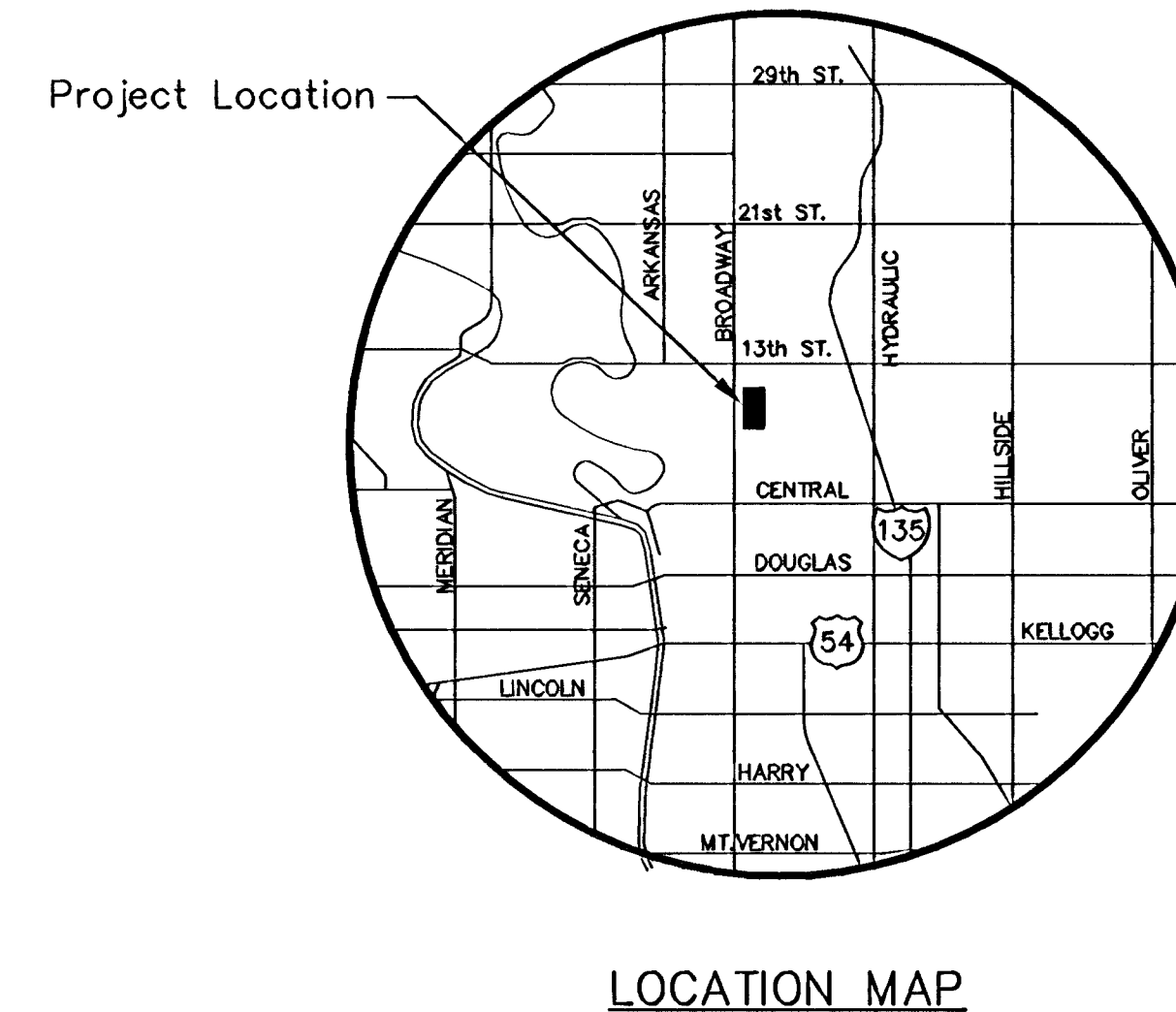
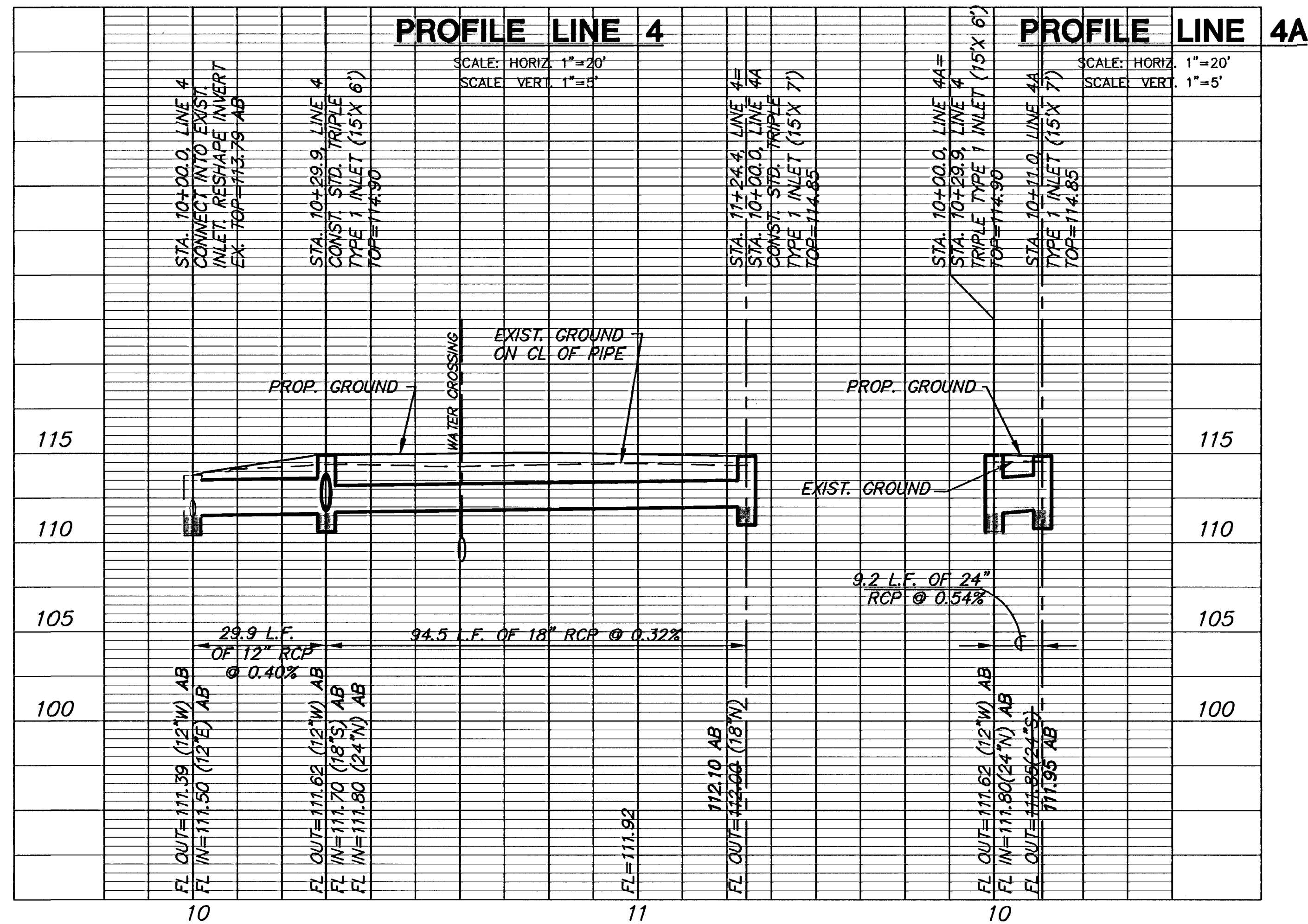
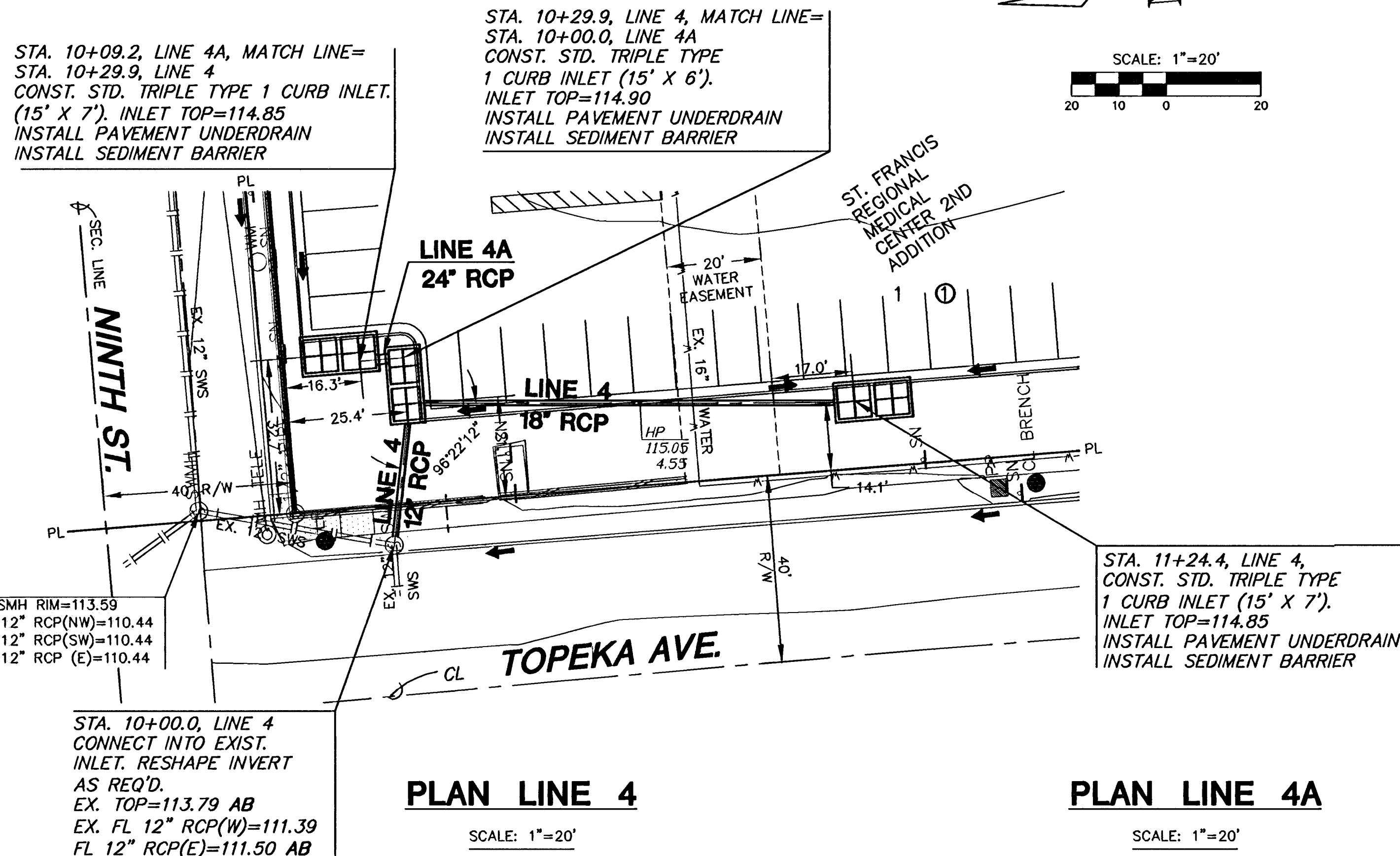
THE CONTRACTOR MUST NOTIFY THE FOLLOWING IN CASE OF EMERGENCY:

COX COMMUNICATIONS (CABLE)	262-0861
WESTAR (ELECTRIC)	383-8600
KANSAS GAS SERVICE (GAS)	832-3101
SBC (TELEPHONE)	800-870-8390
CITY OF WICHITA WATER & SEWER	262-6000
AQUILA (GAS)	800-303-0357
ADELPHIA	209-8806
VIA CHRISTI/ST. FRANCIS (Director of Facilities)	268-6947

- RUBBLE FROM THE REMOVAL OF MISCELLANEOUS STRUCTURES AND EXCESS EXCAVATION WHICH IS TO BE WASTED SHALL BE DISPOSED OF ON SITES TO BE PROVIDED BY THE CONTRACTOR. THESE SITES SHALL BE APPROVED BY THE ENGINEER AS TO SUITABILITY, APPEARANCE AND SITE LOCATION. LOCATIONS THAT, IN THE OPINION OF THE ENGINEER, WILL LEAVE AN UNSIGHTLY APPEARANCE WILL NOT BE APPROVED. ALL DISPOSAL SITES MUST BE APPROVED BY THE KANSAS DEPARTMENT OF HEALTH AND ENVIRONMENT. MATERIAL EITHER STOCKPILED OR DISPOSED OF IN A FLOOD PLAIN WOULD REQUIRE A KANSAS STATE BOARD OF AGRICULTURE PERMIT. ANY MATERIAL DUMPED IN WATERS OF THE UNITED STATES OR WETLANDS IS SUBJECT TO U.S. CORPS OF ENGINEERS PERMITTING REGULATIONS. ANY MATERIAL BURIED OR STOCKPILED BEYOND APPROVED CONSTRUCTION LIMITS WOULD REQUIRE ADDITIONAL ARCHAEOLOGICAL INVESTIGATIONS UNLESS BURIED IN A PREVIOUSLY APPROVED BORROW LOCATION.
- CONTRACTOR SHALL RESEED AND MULCH ALL DISTURBED AREAS. COST SHALL BE CONSIDERED SUBSIDIARY TO SITE RESTORATION.

BENCHMARKS

BM #1 "+" CUT ON EAST SIDE OF TRAFFIC SIGNAL
POLE BASE @ SE COR. OF MURDOCK AND TOPEKA.
ELEV. = 113.86 COW DATUM



APPROVED AS NOTED
BY CITY ENGINEER OF WICHITA,

Storm Water
(Public Works)

SCB 4/3/06

NOTE: CONTRACTOR TO VERIFY DEPTH & LOCATION OF EXISTING UTILITIES PRIOR TO CONSTRUCTION.

NOTE: CONTRACTOR TO COORDINATE REPLACEMENT OF PAVEMENT/SIDEWALK IN STREET R.O.W. W/CITY OF WICHITA

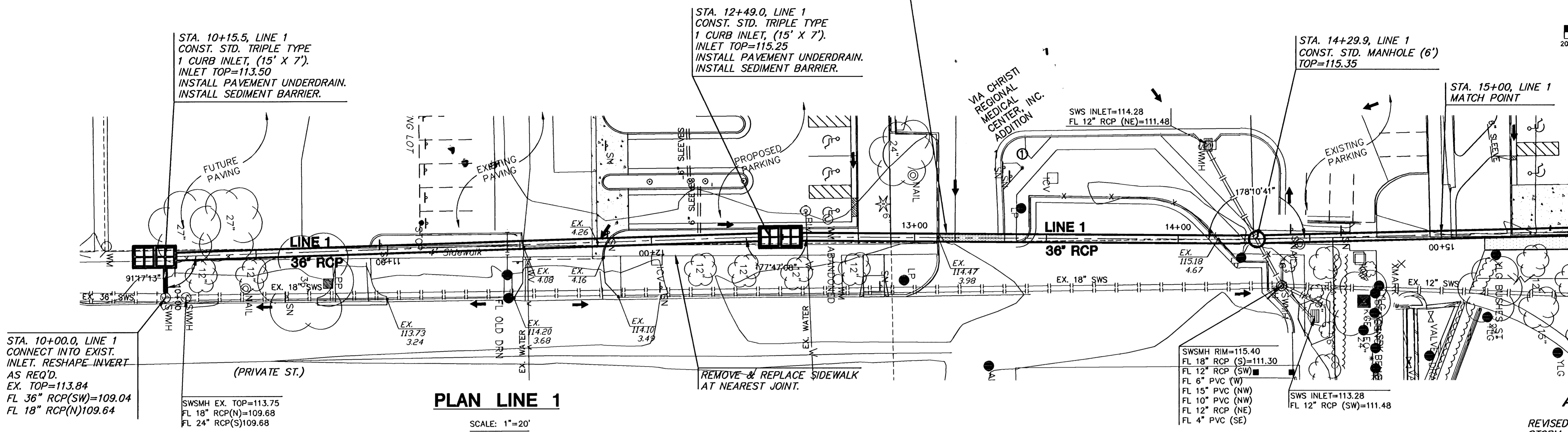
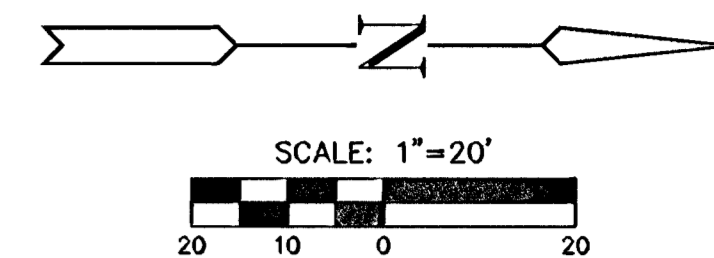
AS-BUILT JULY 2006



STORM WATER SEWER
TO SERVE VIA CHRISTI

PROJECT NAME
PRIVATE STORM SEWER PLANS
SHEET TITLE

JTC DESIGN BY.	MKEC DRAWN BY.	JTC CHECKED BY.
JAN. 2006 DATE	05398 JOB NO.	1 / 5 SHEET/OF



PLAN LINE 1

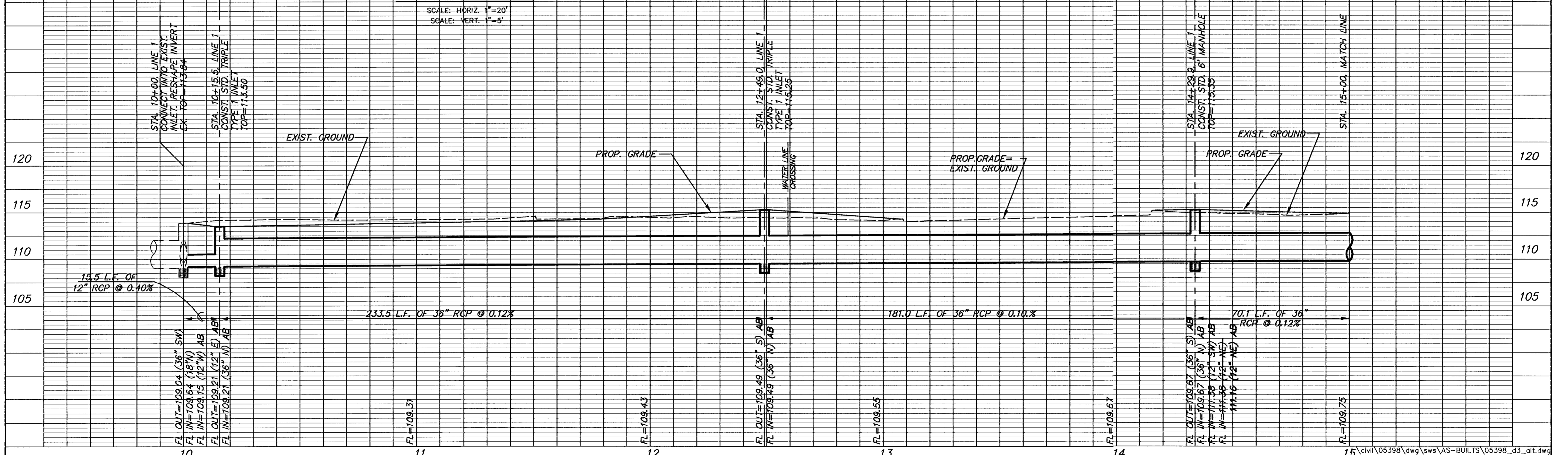
SCALE: 1"=20'

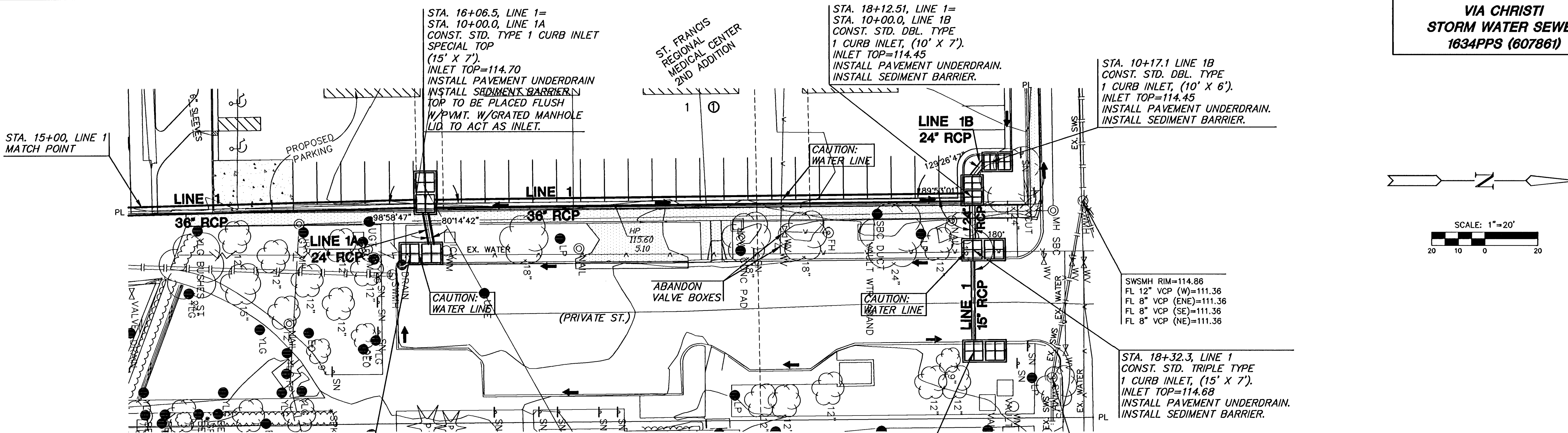
AS-BUILT JULY 2006

REVISED: 3/29/2006—REVISED
STORM WATER ALIGNMENT

PROFILE LINE 1

SCALE: HORIZ. 1"=20'
SCALE: VERT. 1"=5'





PLAN LINE 1-CONT'D

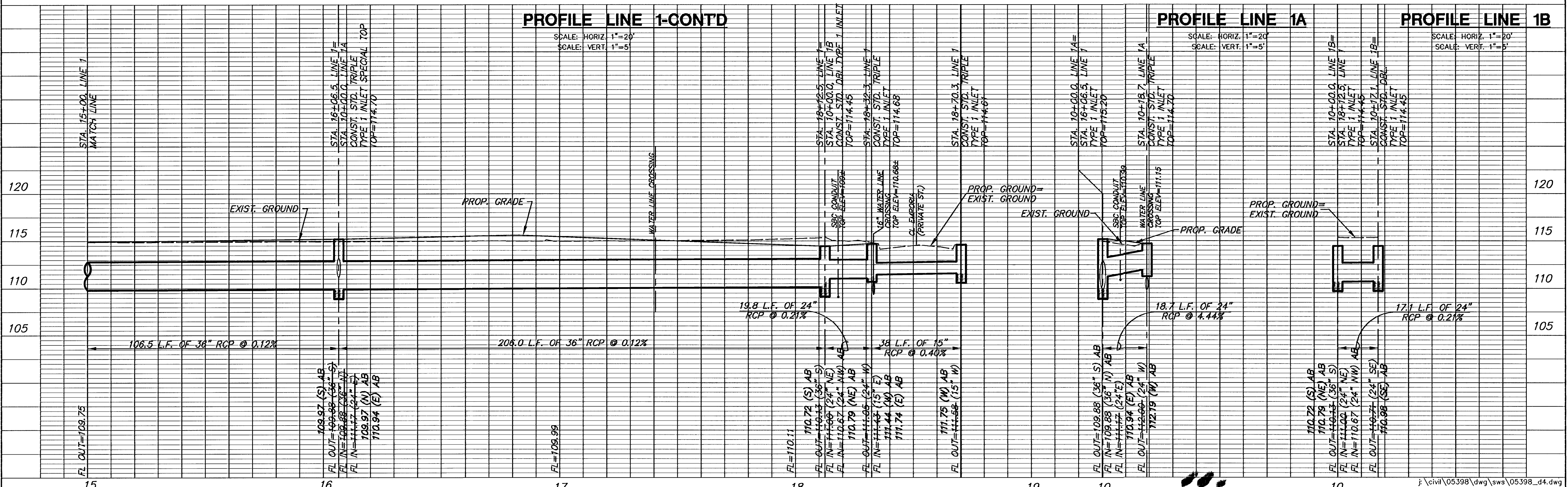
PLAN LINE 1A

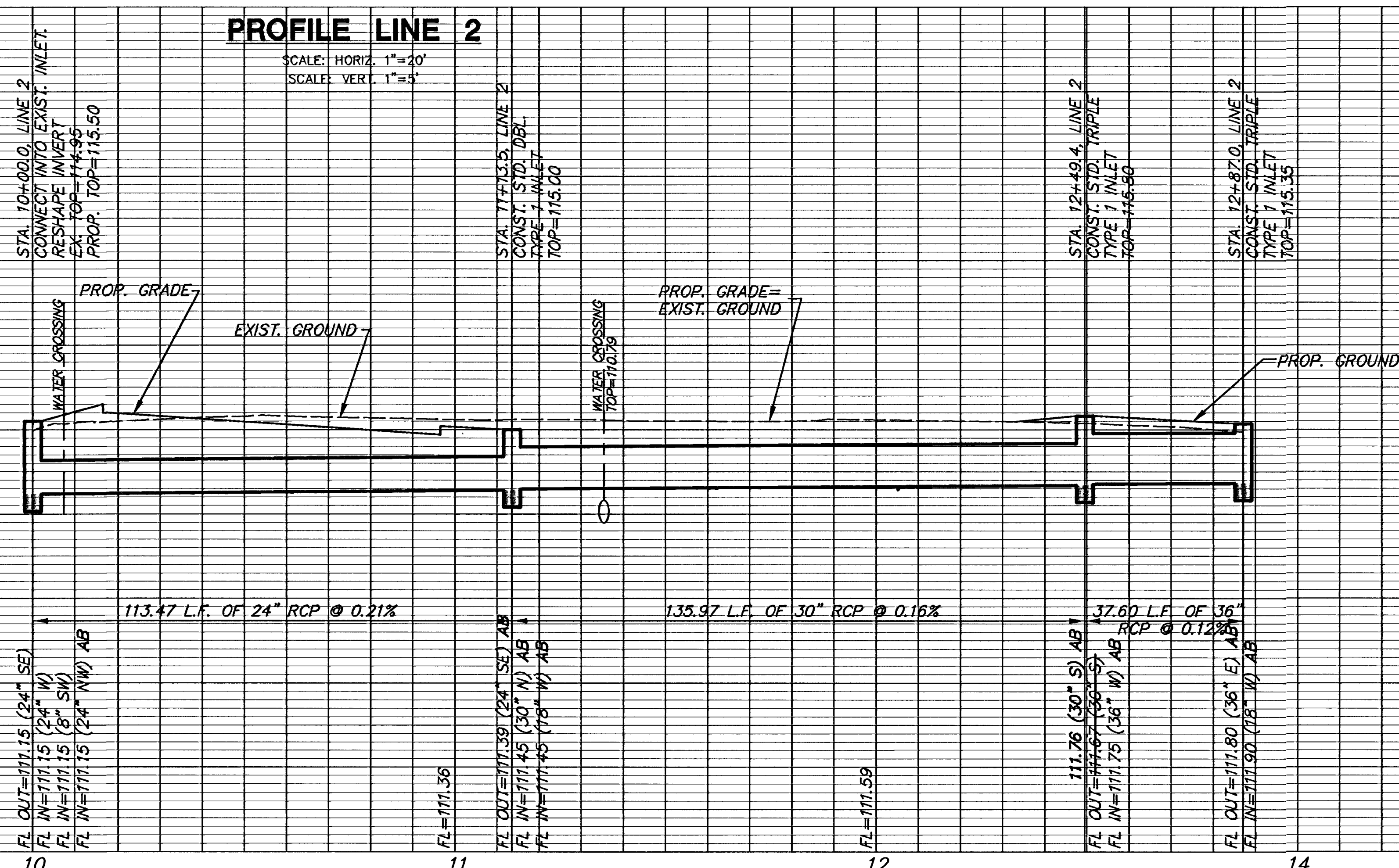
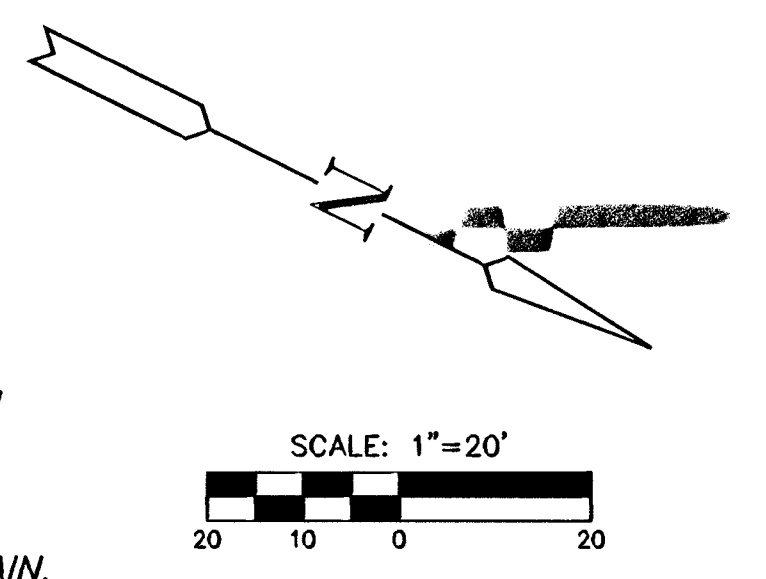
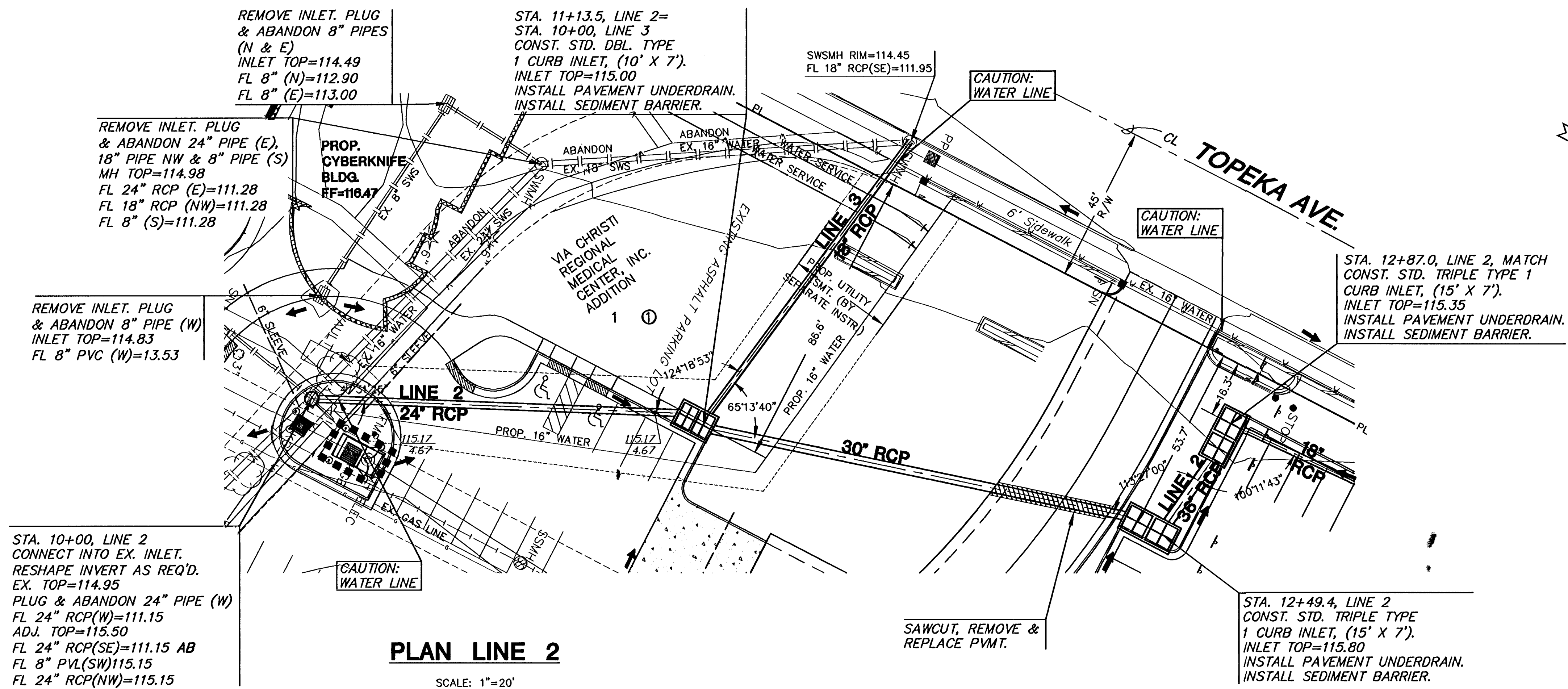
PLAN LINE 1B

PROFILE LINE 1-CONT'D

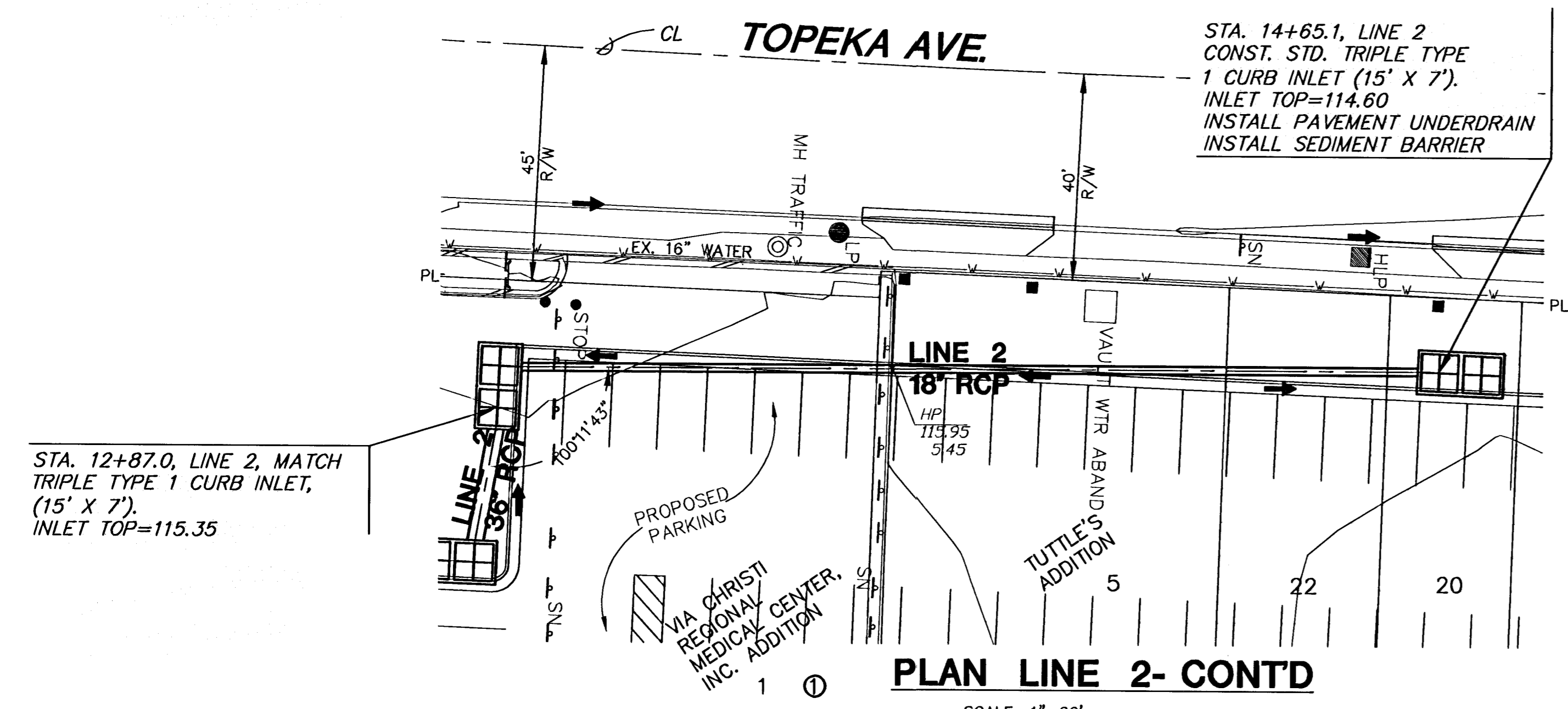
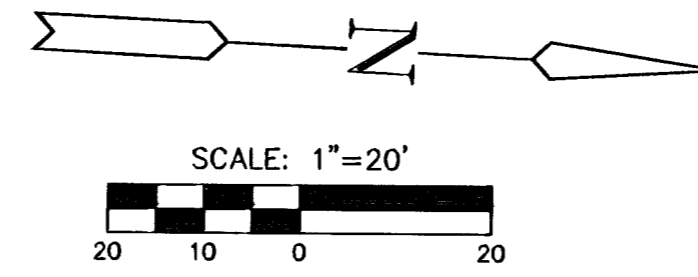
PROFILE LINE 1A

PROFILE LINE 1B



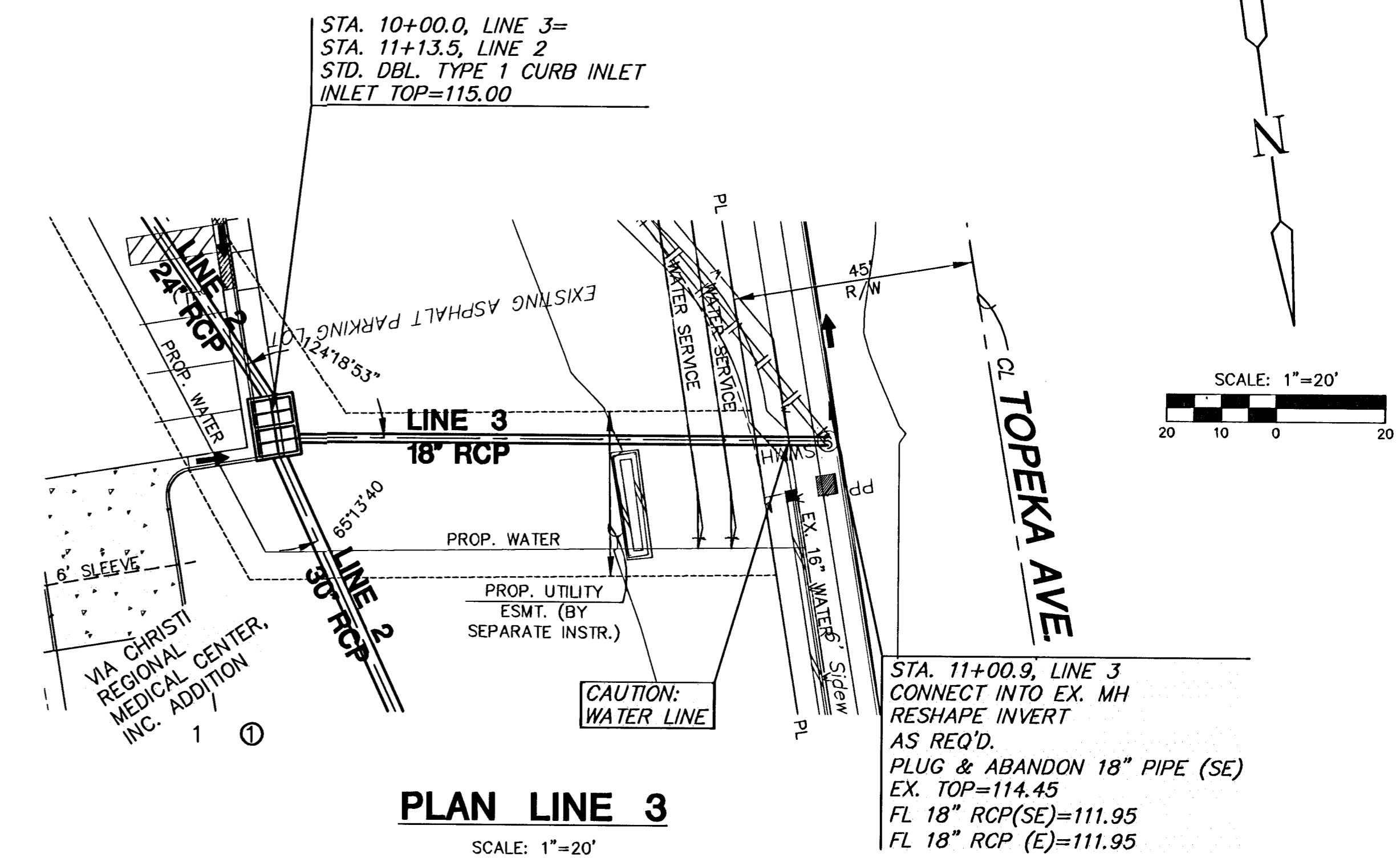


AS-BUILT JULY 2006



PLAN LINE 2- CONTD

SCALE: 1"=20'

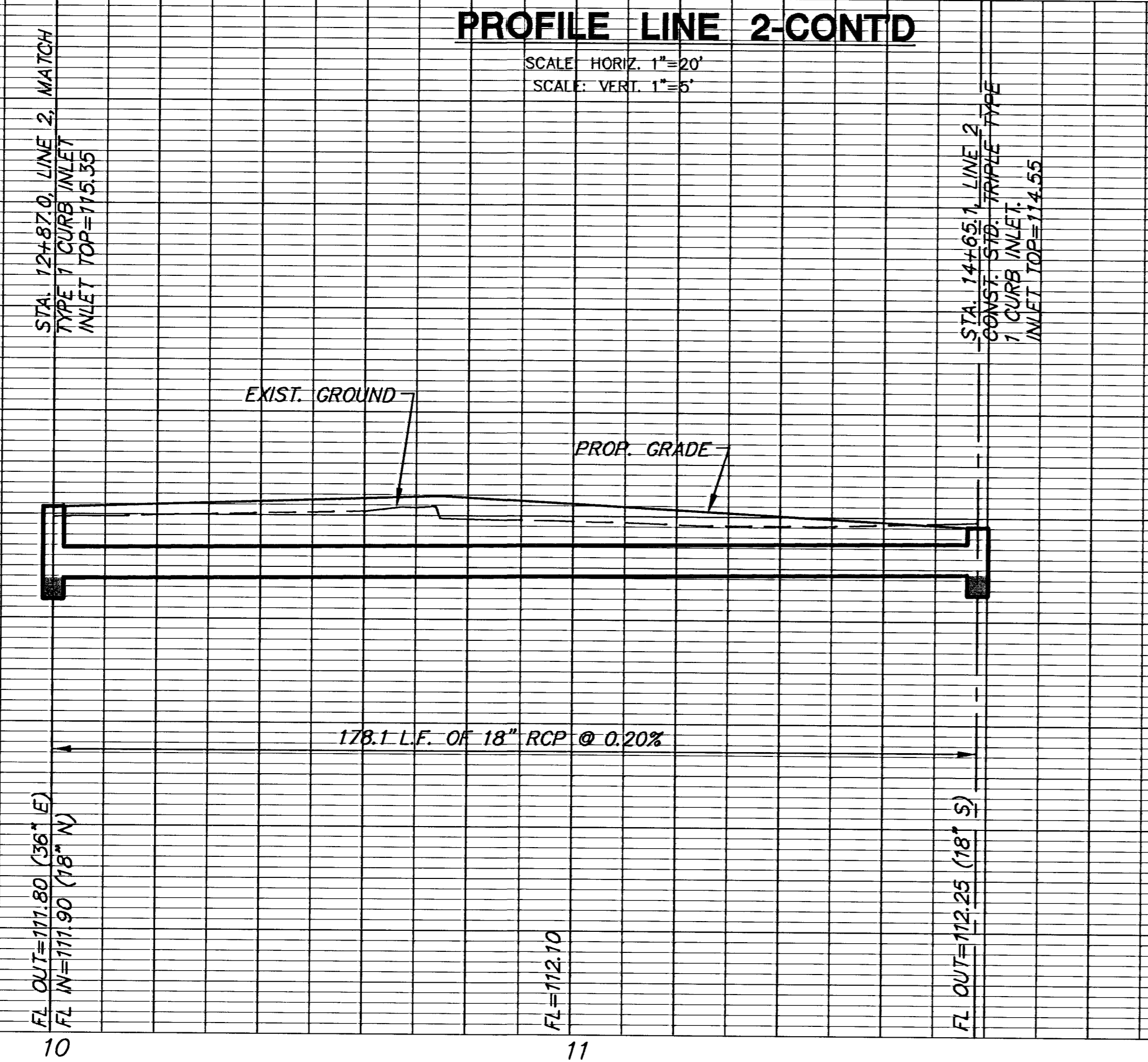


PLAN LINE 3

SCALE: 1"=20'

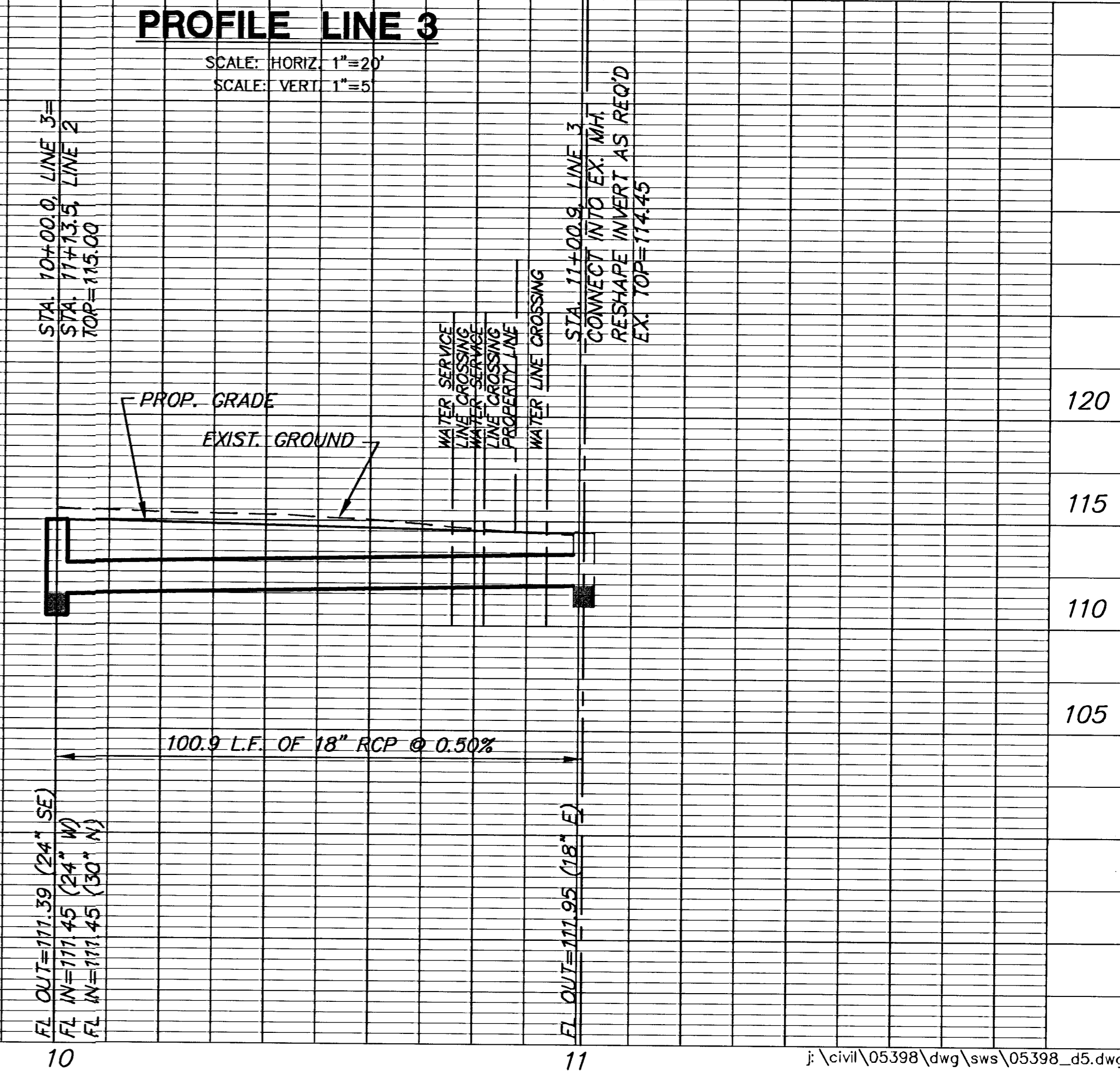
PROFILE LINE 2-CONTD

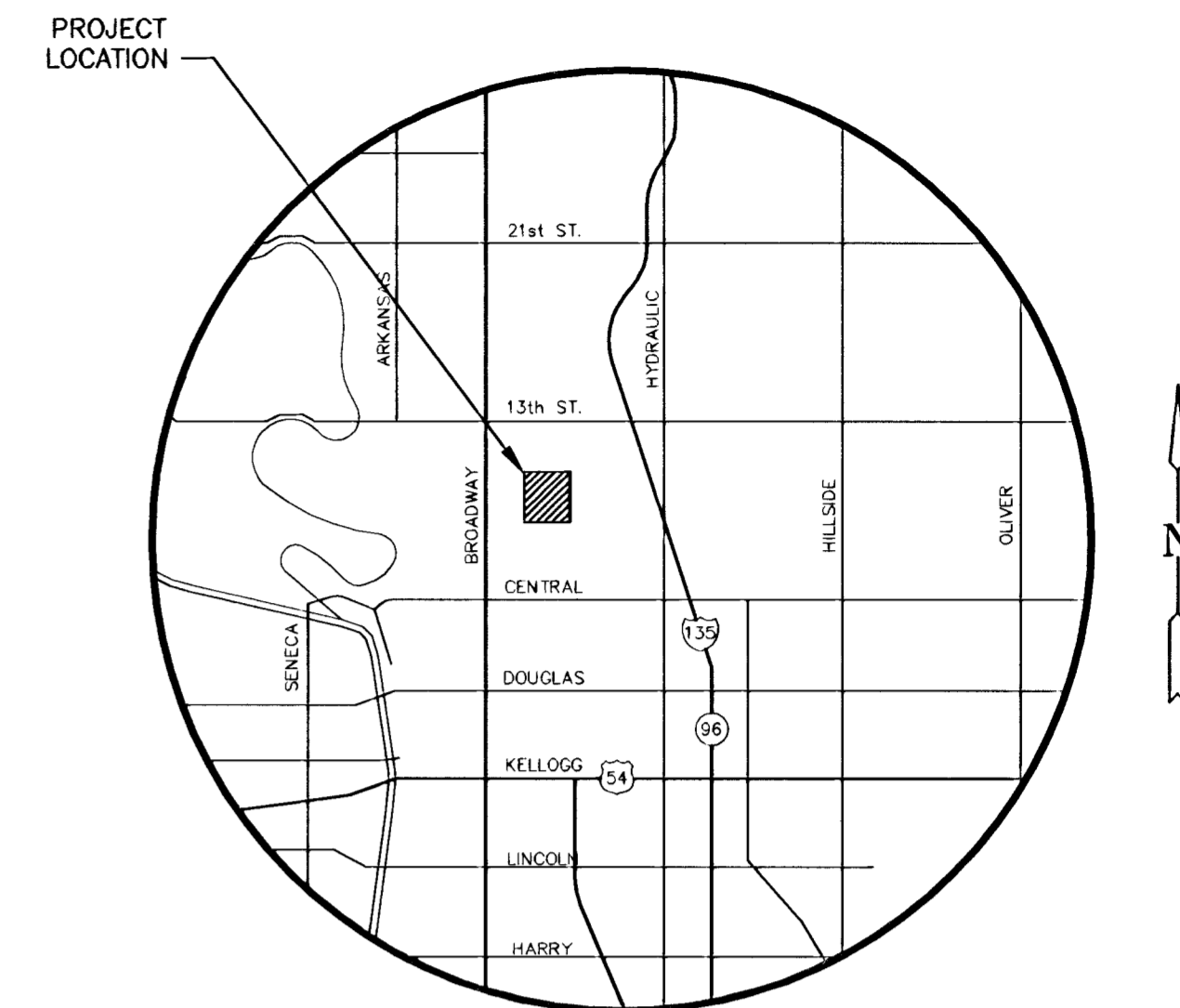
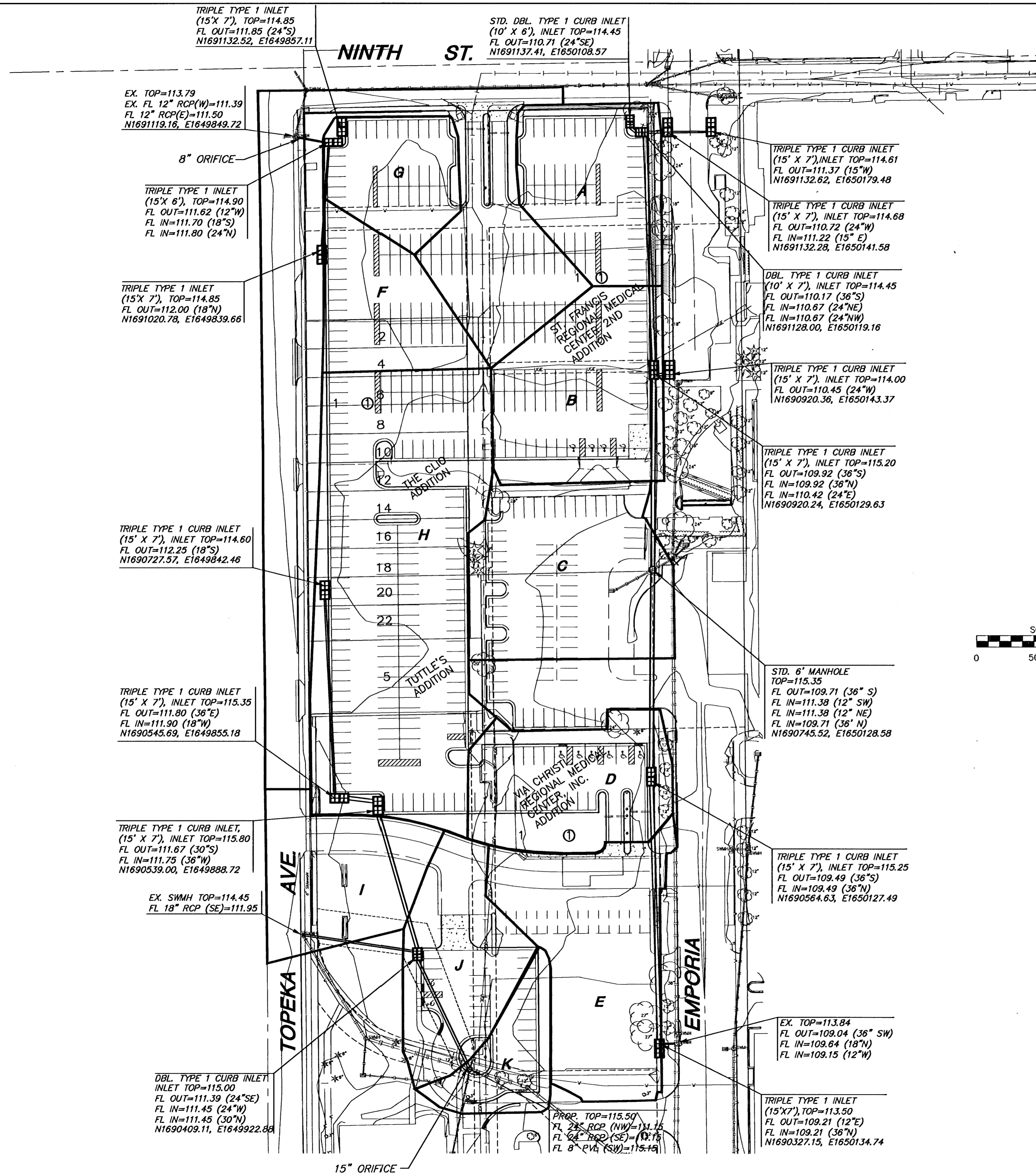
SCALE: HORIZ. 1"=20'
SCALE: VERT. 1"=5'



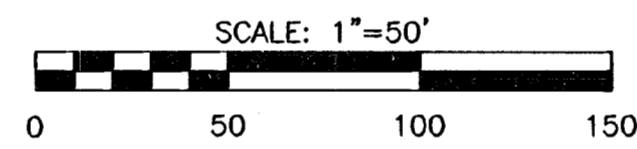
PROFILE LINE 3

SCALE: HORIZ. 1"=20'
SCALE: VERT. 1"=5'





LOCATION MAP



LEGEND

AREA	ACREAGE	c	tc (Minutes)
A	0.40 AC	0.89	15
B	0.62 AC	0.89	15
C	0.69 AC	0.89	15
D	0.43 AC	0.89	15
E	0.58 AC	0.89	15
F	0.31 AC	0.89	15
G	0.26 AC	0.89	15
H	1.28 AC	0.89	15
I	0.37 AC	0.89	15
J	0.38 AC	0.89	15

SYSTEM	100yr.(cfs) Q _{in}	100yr.(cfs) Q _{out}	100yr.(Ac-Ft) storage
East A-E	16.5	7.6	0.16
North West F-G	3.7	2.6	0.02
South West H-K	14.6	9.8	0.07

J:\CIVIL\05398\DWG\GRADE\DRNG_SUPPLEMENT.DWG



VIA CHRISTI - ST. FRANCIS
PROJECT NAME

SUPPLEMENTAL DRAINAGE STUDY
SHEET TITLE

JCM DESIGN BY: MKEC DRAWN BY: JCM CHECKED BY:
MARCH 2006 DATE: 05398 JOB NO. 1 / 1 SHEET/OF