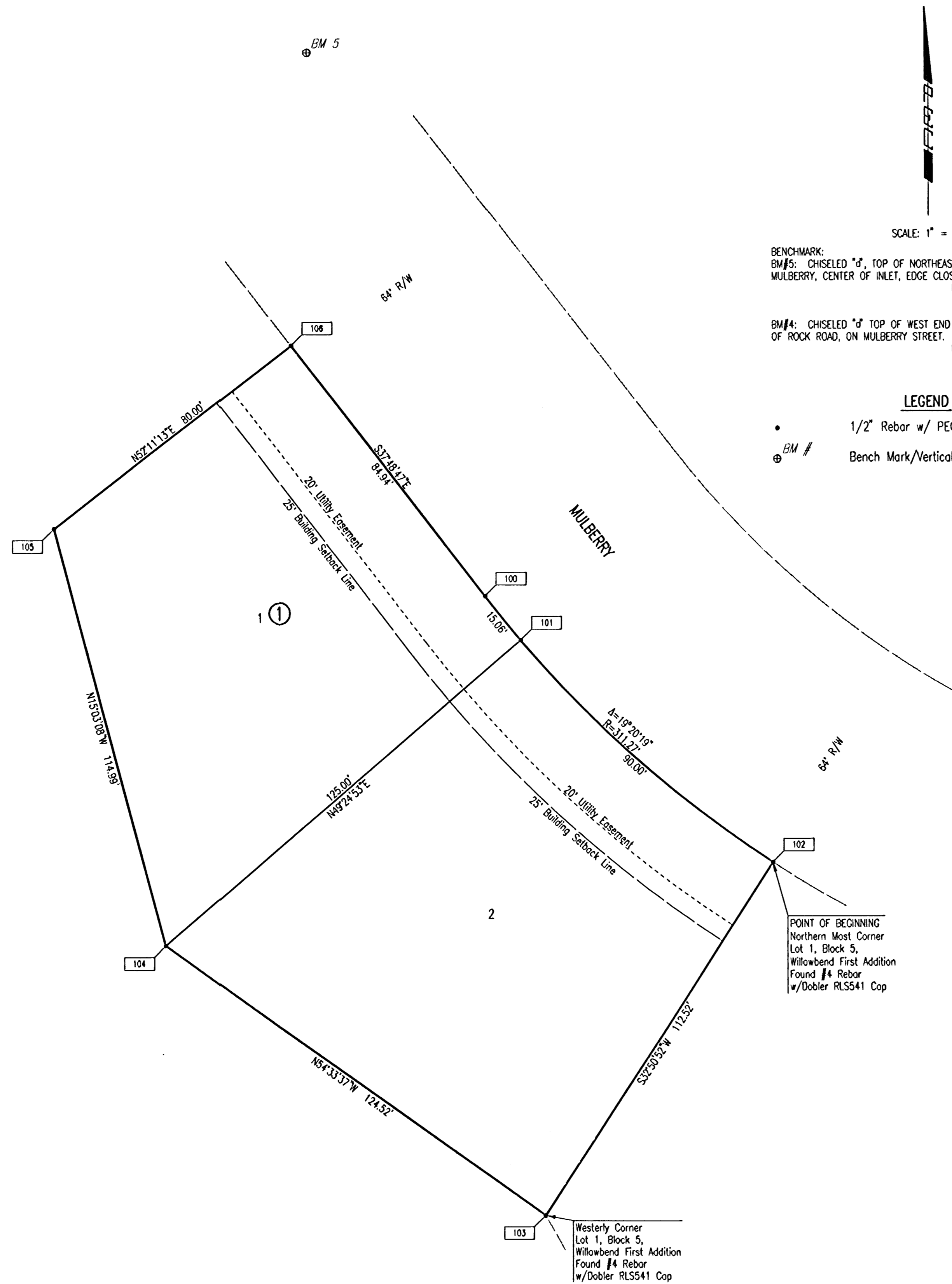


WILLOWBEND NINTH ADDITION

AN ADDITION TO WICHITA, SEDGWICK COUNTY, KANSAS
S.W. 1/4, SEC. 29, T26S, R2E



BENCHMARK:
BM#5: CHISELED "d", TOP OF NORTHEAST INLET, WEST OF ADDRESS #8130 MULBERRY, CENTER OF INLET, EDGE CLOSEST TO ROAD. ELEVATION = 191.76 CITY DATUM 1379.16 N.G.V.D.
BM#4: CHISELED "d" TOP OF WEST END OF SOUTH CURB OF ISLAND, EAST SIDE OF ROCK ROAD, ON MULBERRY STREET. ELEVATION = 187.69 CITY DATUM 1375.09 N.G.V.D.

LEGEND

- 1/2" Rebar w/ PEC Cap unless otherwise noted
- ⊕ BM # Bench Mark/Vertical Control Point

COORDINATE LIST		
POINT	NORTH	EAST
100	5,000.0000	5,000.0000
101	4,988.3303	5,009.5173
102	4,929.3351	5,077.0694
103	4,834.8054	5,016.0375
104	4,907.0081	4,914.5873
105	5,018.0569	4,884.7232
106	5,067.1039	4,947.9244

106 = COORDINATE POINT NO.

Saved: 03-17-2006 9:18:20 AM by RFJ
 Plot Scale: 1:20 03-31-2006 2:56:01 PM by SAW
 C:\2006\06122\PPS\06122-C-Plot

	No. _____ Revision _____ By _____ Date _____	
	PRIVATE SANITARY SEWER EXTENSION WILLOWBEND NINTH ADDITION PLAT JAMES L. ARMOUR, P.E. - CITY ENGINEER PRIVATE PROJECT NO. 1646 PPS (607861)	
	Professional Engineering Consultants, P.A. 303 S. TOPEKA • WICHITA, KANSAS 67202 316-262-2691 • FAX 316-262-3003	
	Designed by MDK Drawn by SAW	Job No. 35-06122-6009 Date March 2006