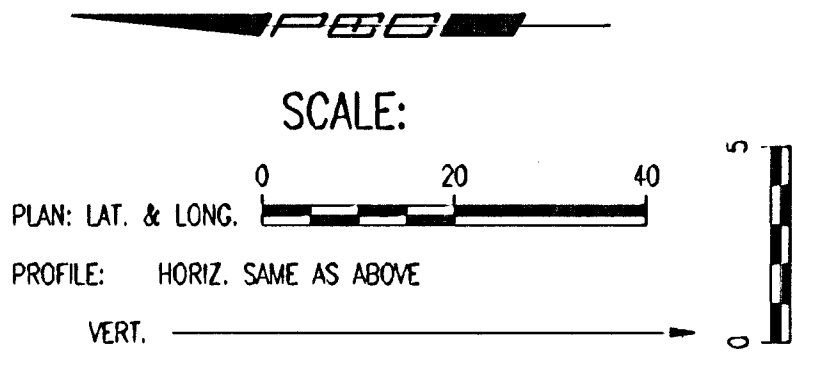
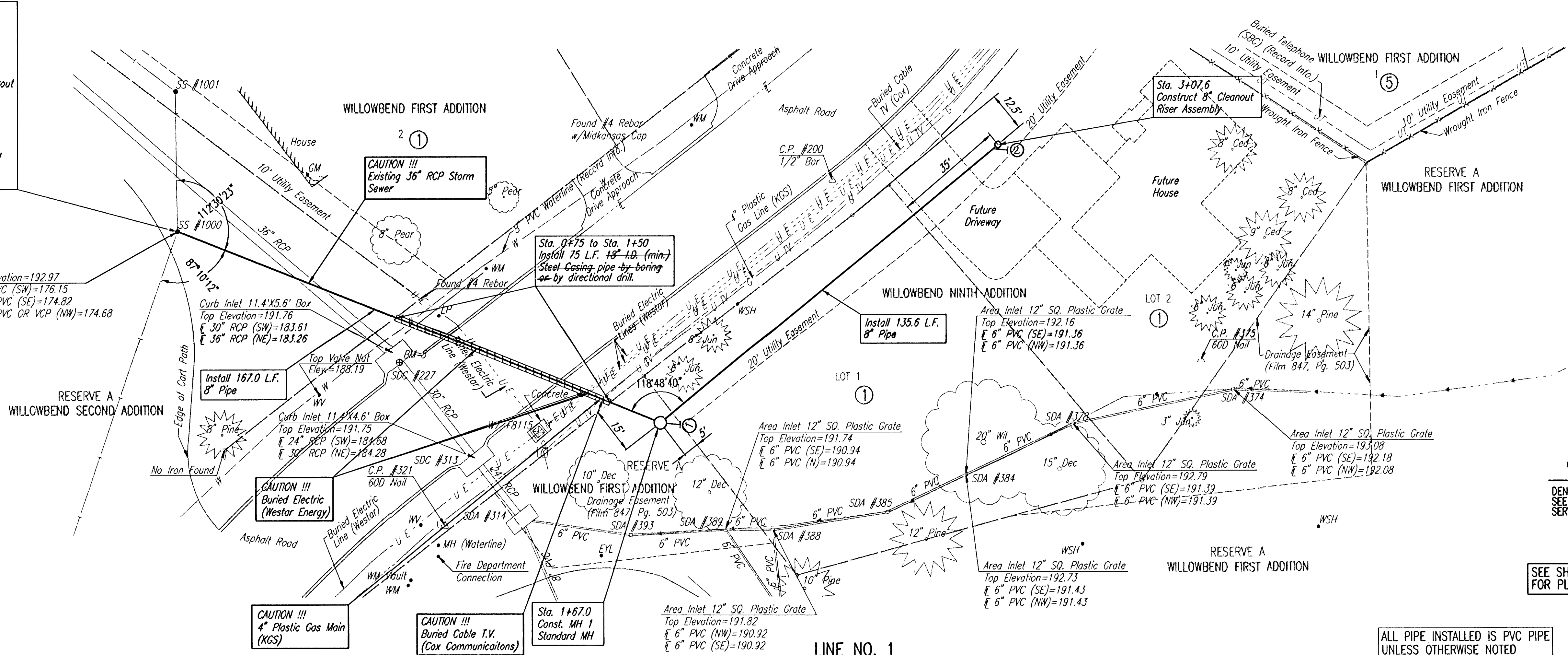


Sta. 0+00.0
 Existing concrete MH
 Removed existing 8" Stub and
 Core MH wall and install outside
 drop connection. Seal new 8"
 pipes to MH with an approved
 waterstop gasket and non-shrink grout
 (Grout opening left by removal of
 existing 8" Stub). Construct a
 minimum of 3' reinforced concrete
 encasement from MH wall.
 Reshape invert to provide smooth
 flow. This work shall be considered
 subsidiary to the price bid for pipe
 in place.

Top Elevation=192.97
 8" PVC (SW)=176.15
 24" PVC (SE)=174.82
 24" PVC OR VCP (NW)=174.68

PLAN	CHECKED	CHECKED
BY		
DATE		

PROFILE	CHECKED	CHECKED
BY		
DATE		



① ②
 DENOTES SEWER SERVICE.
 SEE SHEET NO. 8 FOR SEWER
 SERVICE SCHEDULE AND DETAILS

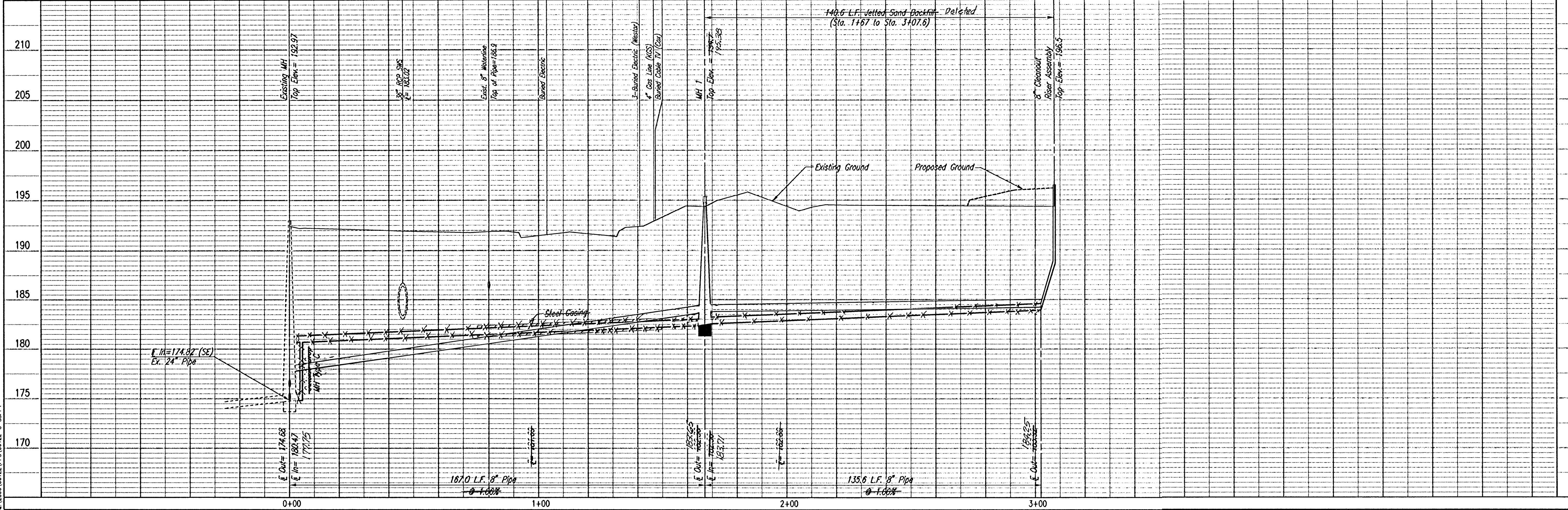
SEE SHEETS NO. 3
 FOR PLAT COORDINATES



ALL PIPE INSTALLED IS PVC PIPE
 UNLESS OTHERWISE NOTED

RECORD DRAWING

LINE NO. 1



Saved 03-31-2006 2:22:52 PM by SWW
 Plot Scale 1:20 03-31-2006 2:43:00 PM by SWW
 C:\2006\06122\PS\06122-C-SPR1

Professional Engineering Consultants, P.A.
 303 S. TORPICA • WICHITA, KANSAS 67202
 316-262-2691 • FAX 316-262-3003

Designed By MDK
 Drawn By SWW

Job No. 35-06122-6009
 Date March 2006

PRIVATE SANITARY SEWER EXTENSION
 WILLOWBEND NINTH ADDITION
SANITARY SEWER LINE NO. 1
 JAMES L. ARMOUR, P.E. - CITY ENGINEER
 PRIVATE PROJECT NO. 1646 PPS (607861)

Sheet 4 of 12