

PRIVATE STORM SEWER

LOTS 1, 7, 8, AND 9 EXCEPT THE NORTH 50' THEREOF, BLOCK 1, SOUTH BROADWAY IND. PARK PRIVATE PROJECT NUMBER 1652 PPS (607861)

GENERAL NOTES

1. Contractor will be required to provide a minimum advance notice of forty-eight (48) hours to utility companies prior to starting any excavation as follows:

Kansas One-Call 687-2470

The Contractor must notify the following in case of an emergency:

Cox Communications	262-0661
Kansas Gas Service	383-8600
Westar	383-8600
Aquila Energy	1-800-303-0357
Southwestern Bell Telephone Company	1-800-286-8313
City of Wichita Water Department	262-6000
City of Wichita Sewer Maintenance	262-6000

2. Existing utilities and their location, as shown on the plans, represent the best information obtainable for design. Location information has been obtained from the various utility companies and is either from company record drawings or company-provided field locations. The Contractor will be required to work around existing utilities within the right-of-way which do not conflict with proposed construction.

3. A saw cut of the full depth of existing surface courses or pavement thickness shall be provided at locations where proposed construction abuts an existing surface course or pavement for which partial removal of that surface or pavement is required, except when such saw cuts are within three (3) feet of an existing joint the limits of removal shall be extended to the existing joint.

4. Rubble from the removal of miscellaneous structures and excess excavation which is to be wasted shall be disposed of on sites to be provided by the Contractor. These sites shall be approved by the Engineer as to suitability, appearance and site location. Locations that, in the opinion of the Engineer, will leave an unsightly appearance will not be approved.

5. All disposal sites must be approved by the Kansas Department of Health and Environment. Material either stockpiled or disposed of in a flood plain would require a Kansas State Board of Agriculture permit. Any material dumped in waters of the United States or wetlands is subject to U.S. Corps permitting regulations. Any material buried or stockpiled beyond approved of Engineers construction limits would require additional archeological investigations unless buried in a previously approved borrow location.

6. This project is located within the limits of a larger project which will include building construction. The General Contractor for the project will submit a Storm Water Pollution Prevention Plan for the entire project prior to beginning any work on this street project.

7. This project is to be constructed in accordance with City of Wichita Standard Specifications for the Construction of City Projects, and Policy on Construction of Public Works Improvements by Private Contract.

8. No work shall begin on this project before required bonds are submitted to the City of Wichita, and the project inspector has been notified.

9. All areas of public R/W disturbed by construction of this project are to be restored in accordance with Administrative Regulation AR 78 of the City of Wichita.

10. Precast concrete inlet construction maybe used at contractor's option, with approval of submittal drawings by Engineer.

11. The Contractor should not place fill until the DWR permit has been approved.

INDEX OF SHEETS

1. COVER SHEET
2. SITE GRADING PLAN
- 3.-5. STORM SEWER PLAN & PROFILE
6. SHALLOW TYPE "P" MANHOLE DETAILS
- 7.-10. EROSION CONTROL PLAN

BENCHMARKS

BM Datum - Square cut in north return on north side of catch basin at the PC of the cul-de-sac between Lots 7 and 8, Block 1 of Broadway Industrial Park. MSL 1272.20 NGVD29

BM - City of Wichita Brass Disk at the SW corner of Broadway and 47th St. South and 47th St. South. NE corner of traffic signal concrete pole base. MSL 1274.84 NGVD29

LEGAL DESCRIPTION
Lot 1, 7, 8, 10, and Lot 9 except the North 50' thereof, North Broadway Industrial Park an addition to Wichita, Sedgwick County, Kansas

APPROVED AS NOTED
BY CITY ENGINEER OF WICHITA

Sanitary Sewers _____

Storm Sewers let 9-14-06

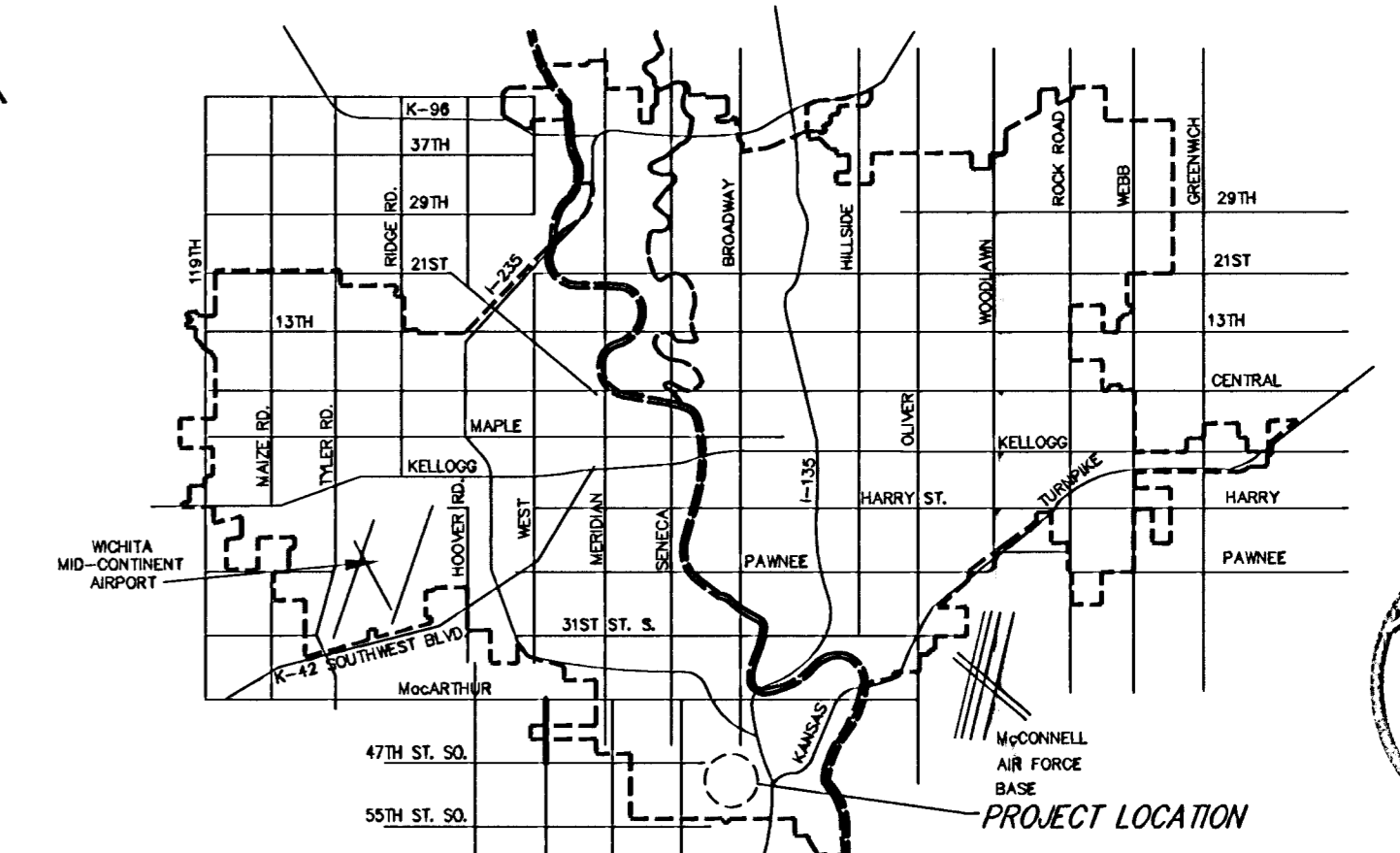
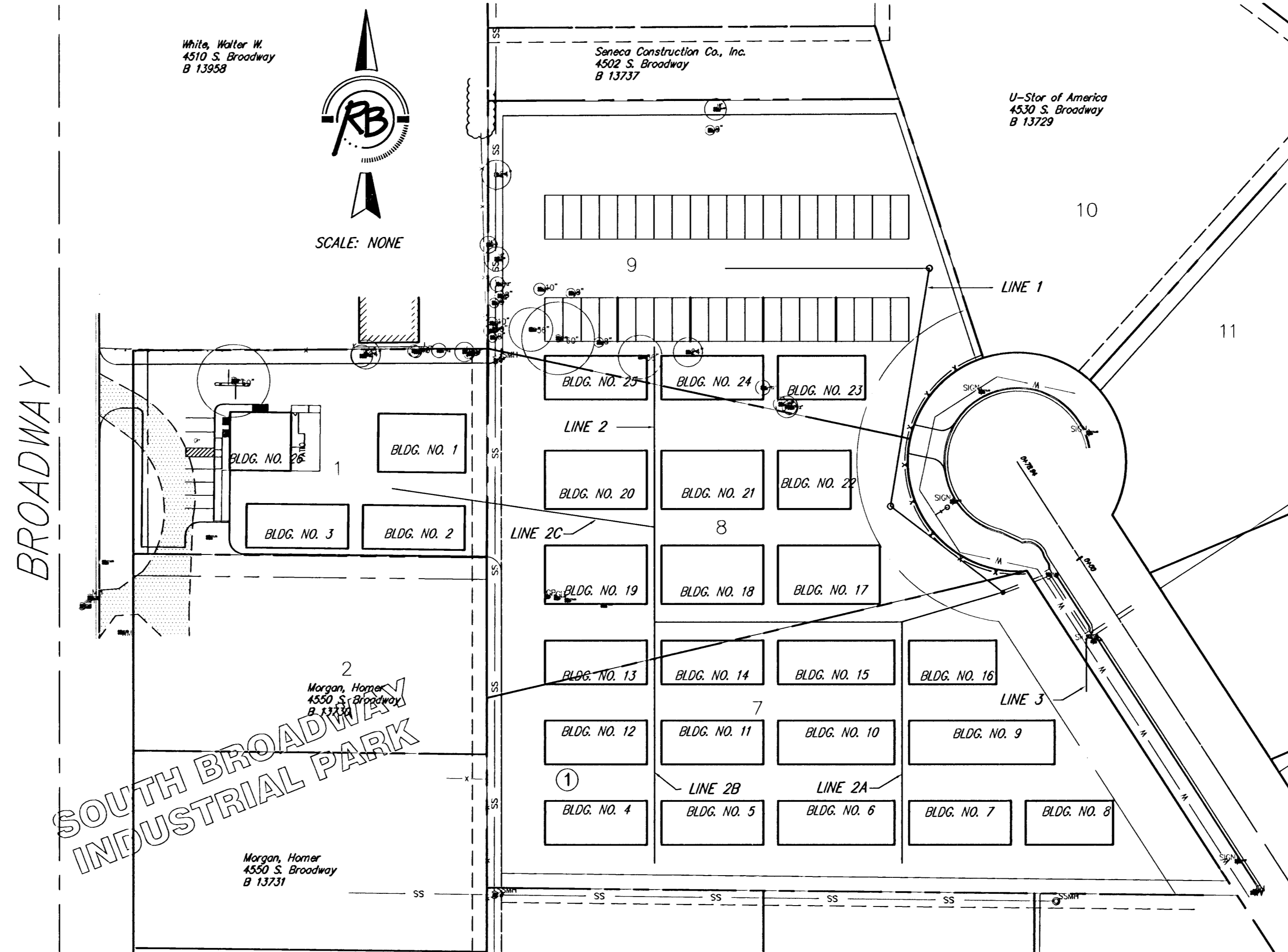
Driveway Approaches _____

Water Mains _____

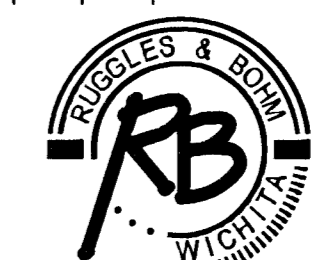
Paving _____

NOTE TO CONTRACTORS

Inspection and testing for this project are to be provided by a Licensed Consulting Engineering Firm under contract with the Owner/Developer. Said inspection to be in accordance with the City of Wichita standard construction engineering practices and certified by a Licensed Professional Engineer. No work shall be performed in dedicated easements or public right-of-way by the Contractor without such inspection, nor shall any work be commenced without written authorization by the City Engineer.

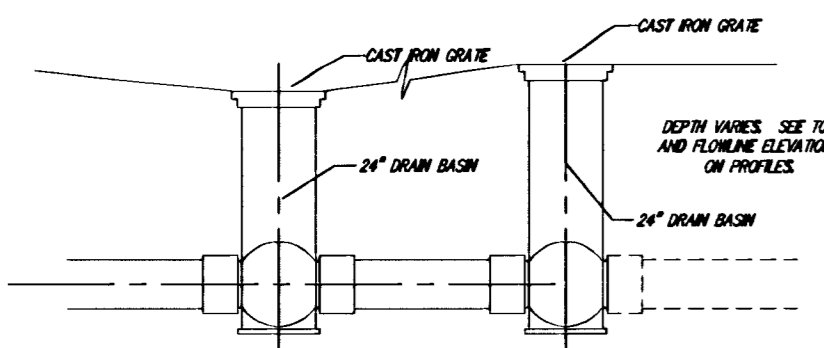


CITY OF WICHITA, KANSAS
JAMES R. ARMOUR, P.E., CITY ENGINEER



Ruggles & Bohm, P.A.
Engineering, Surveying, Land Planning
924 North Main
Wichita, Kansas 67203
www.rbkansas.com
(316) 264-8008
(316) 264-4621 fax
E-mail: info@rbkansas.com

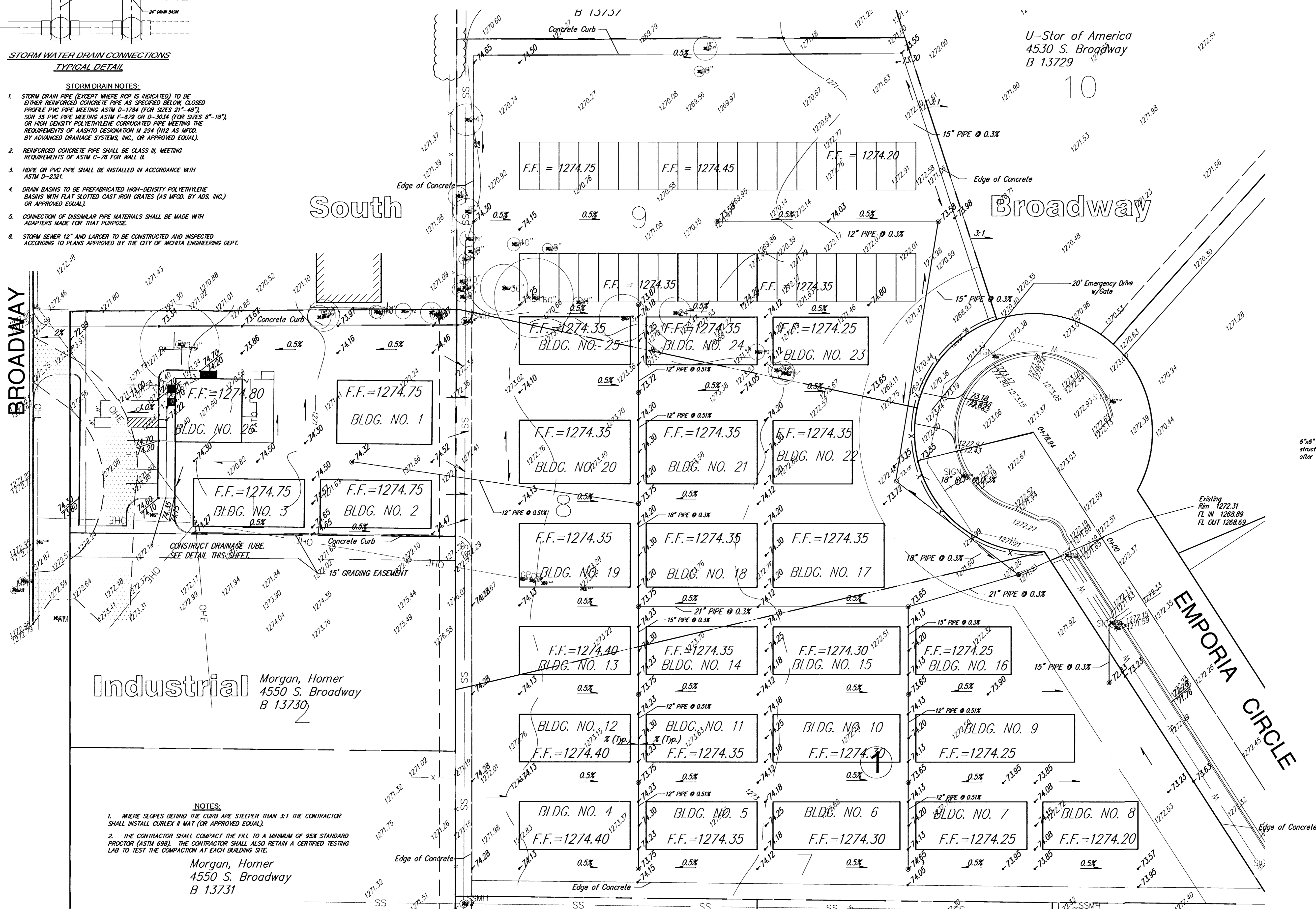




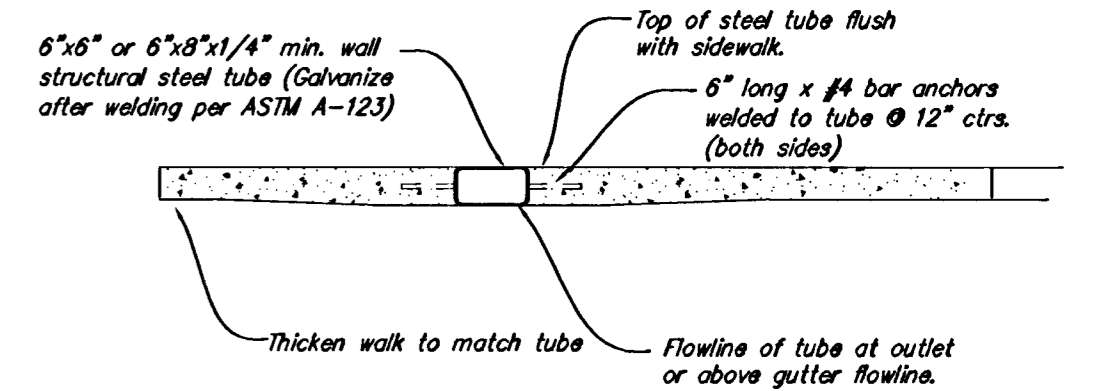
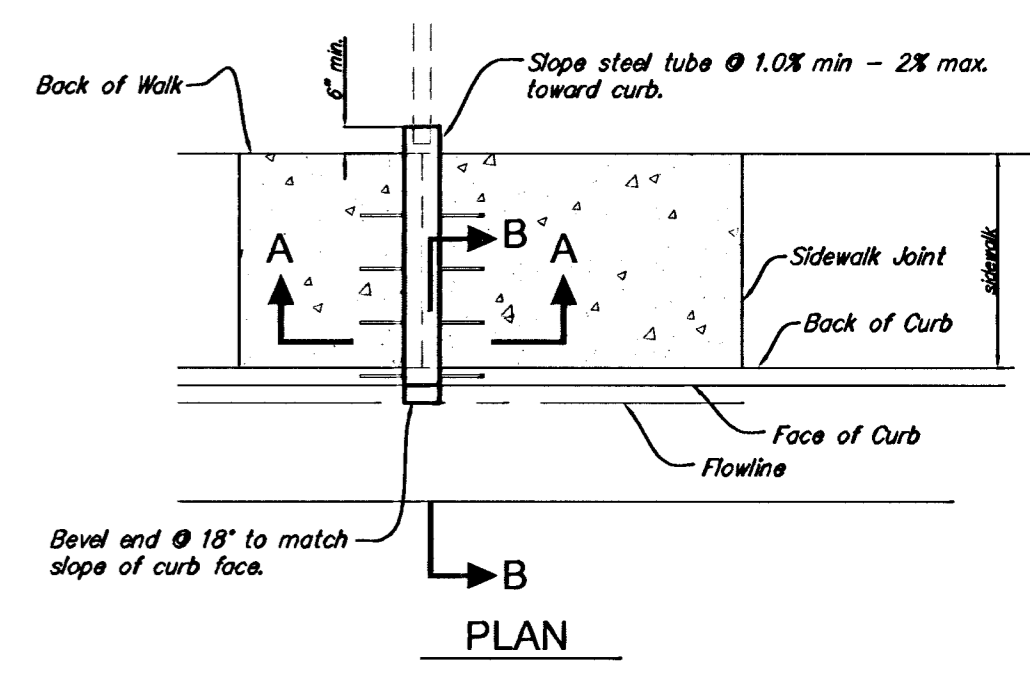
**STORM WATER DRAIN CONNECTIONS
TYPICAL DETAIL**

STORM DRAIN NOTES:

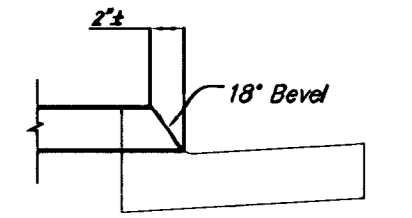
1. STORM DRAIN PIPE (EXCEPT WHERE ROP IS INDICATED) TO BE EITHER REINFORCED CONCRETE PIPE AS SPECIFIED BELOW, CLOSED PROFILE PVC PIPE MEETING ASTM D-1784 (FOR SIZES 21"-48"), SDR 35 PVC PIPE MEETING ASTM F-879 OR D-3034 (FOR SIZES 8"-18"), OR HIGH DENSITY POLYETHYLENE CORRUGATED PIPE MEETING THE REQUIREMENTS OF MASHTO DESIGNATION M 294 (N12 AS MFGD. BY ADVANCED DRAINAGE SYSTEMS, INC., OR APPROVED EQUAL).
2. REINFORCED CONCRETE PIPE SHALL BE CLASS III, MEETING REQUIREMENTS OF ASTM C-76 FOR WALL B.
3. HOPE OR PVC PIPE SHALL BE INSTALLED IN ACCORDANCE WITH ASTM D-2321.
4. DRAIN BASINS TO BE PREFABRICATED HIGH-DENSITY POLYETHYLENE BASINS WITH FLAT SLOTTED CAST IRON GRATES (AS MFGD. BY ADS, INC.) OR APPROVED EQUAL).
5. CONNECTION OF DISSIMILAR PIPE MATERIALS SHALL BE MADE WITH ADAPTERS MADE FOR THAT PURPOSE.
6. STORM SEWER 12" AND LARGER TO BE CONSTRUCTED AND INSPECTED ACCORDING TO PLANS APPROVED BY THE CITY OF WICHITA ENGINEERING DEPT.



**DRAINAGE TUBE DETAILS FOR
SIDEWALK AT CURB**



SECTION A-A



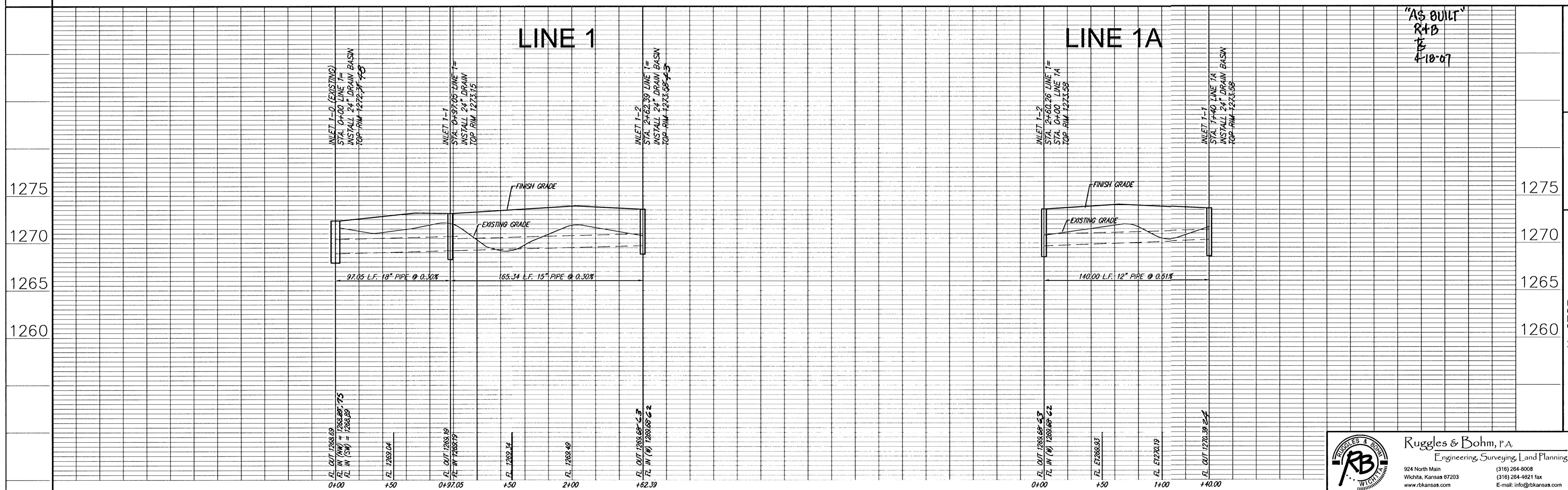
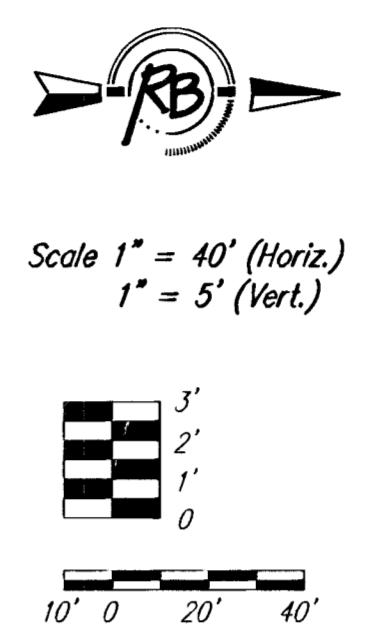
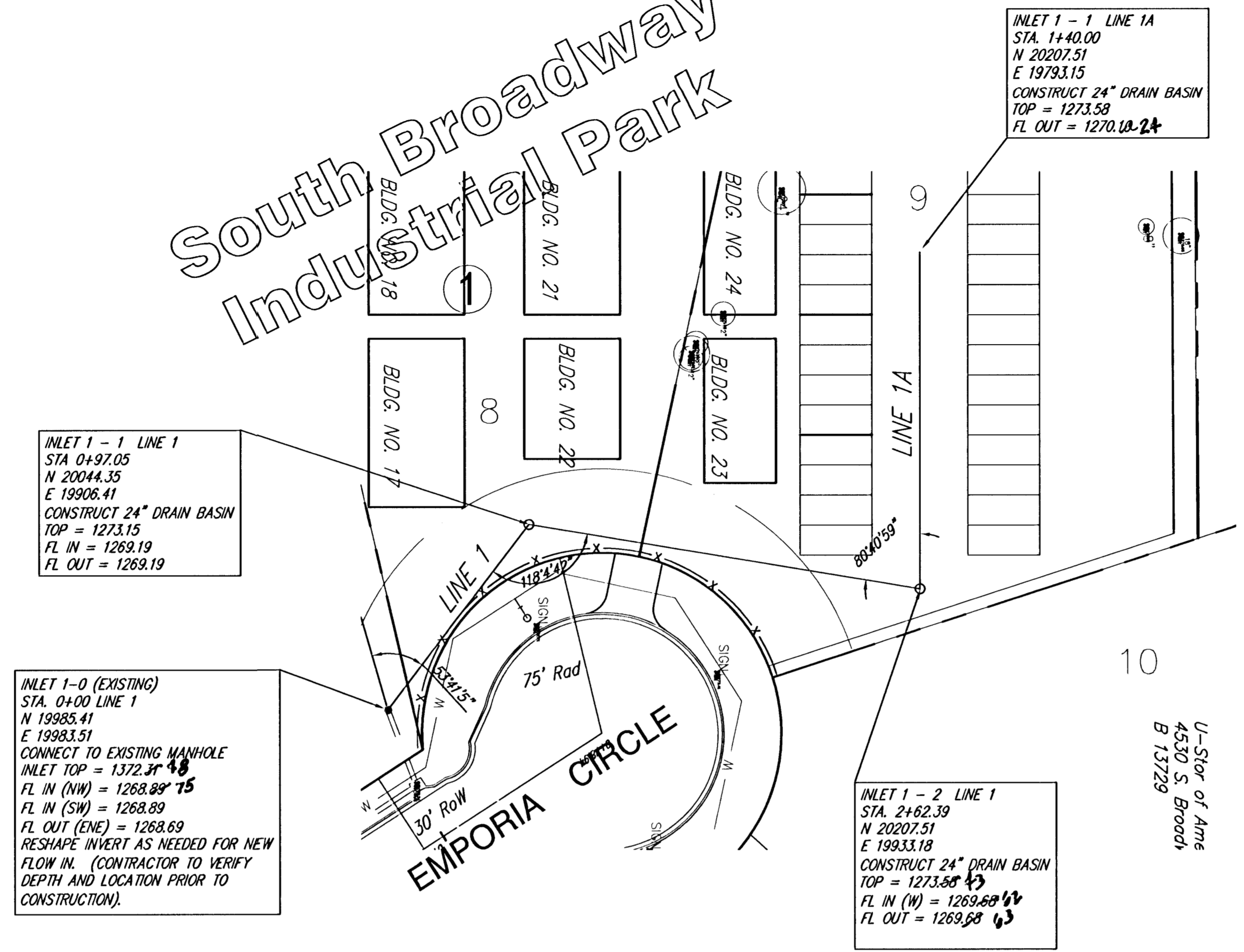
SECTION B-B

- NOTES:**
1. WHERE SLOPES BEHIND THE CURB ARE STEEPER THAN 3:1 THE CONTRACTOR SHALL INSTALL CURLEX II MAT (OR APPROVED EQUAL).
 2. THE CONTRACTOR SHALL COMPACT THE FILL TO A MINIMUM OF 95% STANDARD PROCTOR (ASTM 699). THE CONTRACTOR SHALL ALSO RETAIN A CERTIFIED TESTING LAB TO TEST THE COMPACTON AT EACH BUILDING SITE.

Morgan, Homer
4550 S. Broadway
B 13731

GRADING PLAN		U-STOR
GREAT WHITE WAY		
	Ruggles & Bohm, P.A. Engineering, Surveying, Land Planning	
	924 North Main Wichita, Kansas 67203 www.rugbohm.com	
	(316) 264-4008 (316) 264-4021 fax E-mail: info@rugbohm.com	
	PDC 5/19/06 2 10	

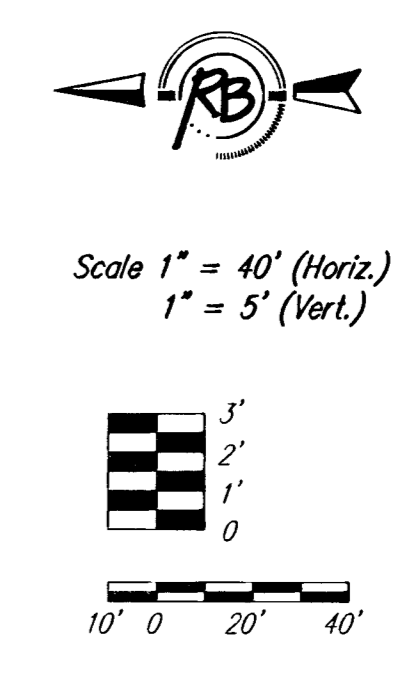
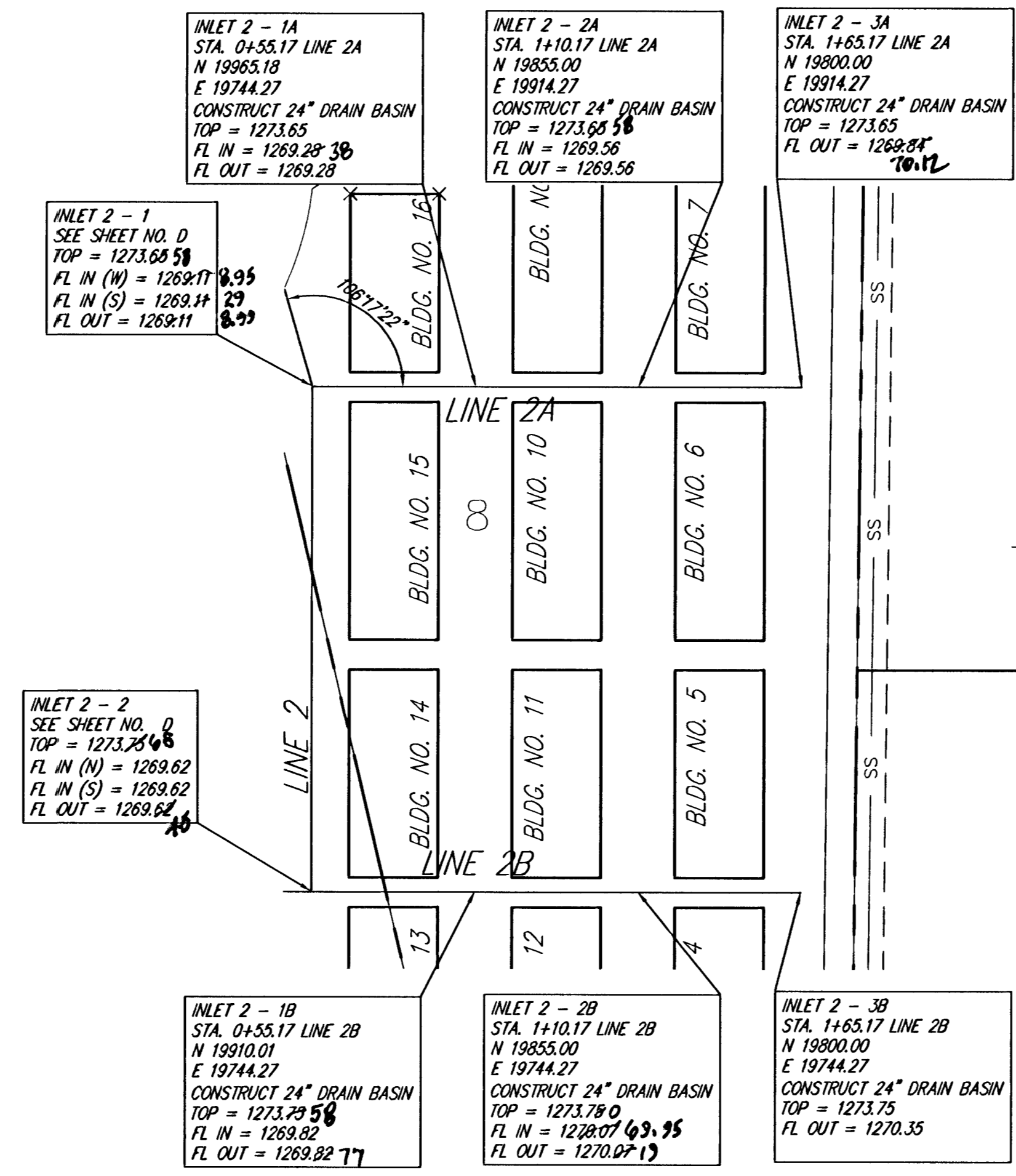
South Broadway Industrial Park



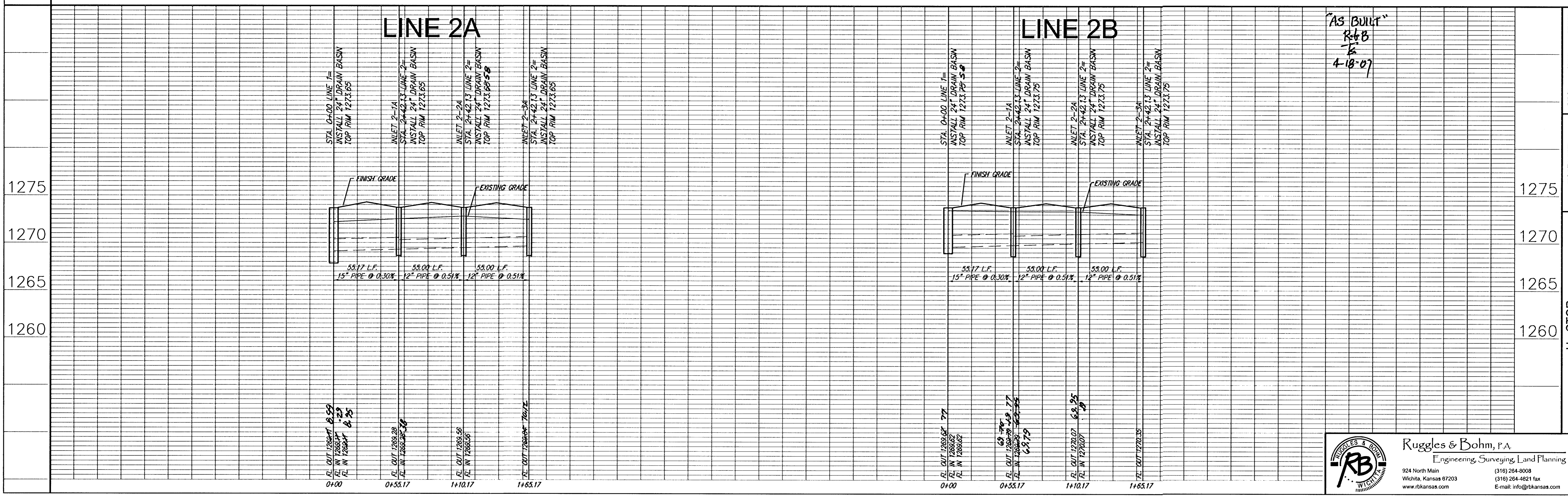
"AS BUILT"
 R+B
 4-18-07

Ruggles & Bohm, P.A.
 Engineering, Surveying, Land Planning
 924 North Main
 Wichita, Kansas 67203
 www.rbkansas.com
 (316) 264-8008
 (316) 264-4621 fax
 E-mail: info@rbkansas.com

PROJECT NUMBER 1652 PPS	DESIGN PDC	DRAWN PDC	REVIEWED Aug 1
DRAWING FILE Eng. Bobs	UTILITY	DATE Mar. 16, 2006	REVIEW
U - STOR			
STORM SEWER PLAN & PROFILE			
WICHITA, KANSAS			
316	2817E	SHEET	
3	OF 10		



①
South Broadway
Industrial Park



Ruggles & Bohm, P.A.
Engineering, Surveying, Land Planning

924 North Main
Wichita, Kansas 67203
www.rbkansas.com

(316) 264-8008
(316) 264-4621 fax
E-mail: info@rbkansas.com

PROJECT NUMBER
1652 PPS
DRAWING FILE
Eng Base

DESIGN
PDC
UTILITY

DRAWN
PDC

REVIEWED
Aug 1

DATE
Mar. 16, 2006

REVIEW

U - STOR
STORM SEWER PLAN & PROFILE
WICHITA, KANSAS

RB JOB
2817E
SHEET
4
OF
10

