

BENCHMARKS:

BM #1: C. O. W. benchmark, east of right-of-way, south of Pawnee, 31.80 feet east of center line of Webb Road, 4.60 feet north of north face of power pole. Elev. = 1384.18 NGVD29

BM #2: "□" cut, top of east curb on Linden opposite P.C. in Lot 5, Block 2, Towne Parc 4th Addition Elev. = 1397.09

BM #3: "□" cut, top of curb 68'± West of 1/4 Section Line, South side of Hurst Elev. = 1398.62

SEWER SERVICE TABLE

NUMBER	TYPE	LOCATION				FOR INFORMATION ONLY	
		LOT NO.	BLOCK NO.	LINE NO.	STATION\ DIRECTION	APPROXIMATE LENGTH 4" PIPE	
						VERTICAL	HORIZONTAL
1	8" X 4" Tee	9	A	X	0-34.0/Lt.	24'	18'
2	8" X 4" Tee	8	A	X	0-38.0/Lt.	24'	18'
3	8" X 4" Tee	7	A	1	0+74.1/Lt.	24'	15'
4	8" X 4" Tee	6	A	1	0+94.1/Lt.	24'	15'
5	8" X 4" Tee	X	X	1	2+75.8/Lt.	24'	13'
6	8" X 4" Tee	1	C	1	2+80.8/Rt.	24'	7'
7	8" X 4" Tee	X	X	1	3+37.8/Lt.	23'	13'
8	8" X 4" Tee	2	C	1	3+42.8/Rt.	22'	7'
9	8" X 4" Tee	X	X	1	3+99.8/Lt.	22'	13'
10	8" X 4" Tee	3	C	1	4+04.8/Rt.	22'	7'
11	8" X 4" Tee	X	X	1	4+24.8/Lt.	22'	13'

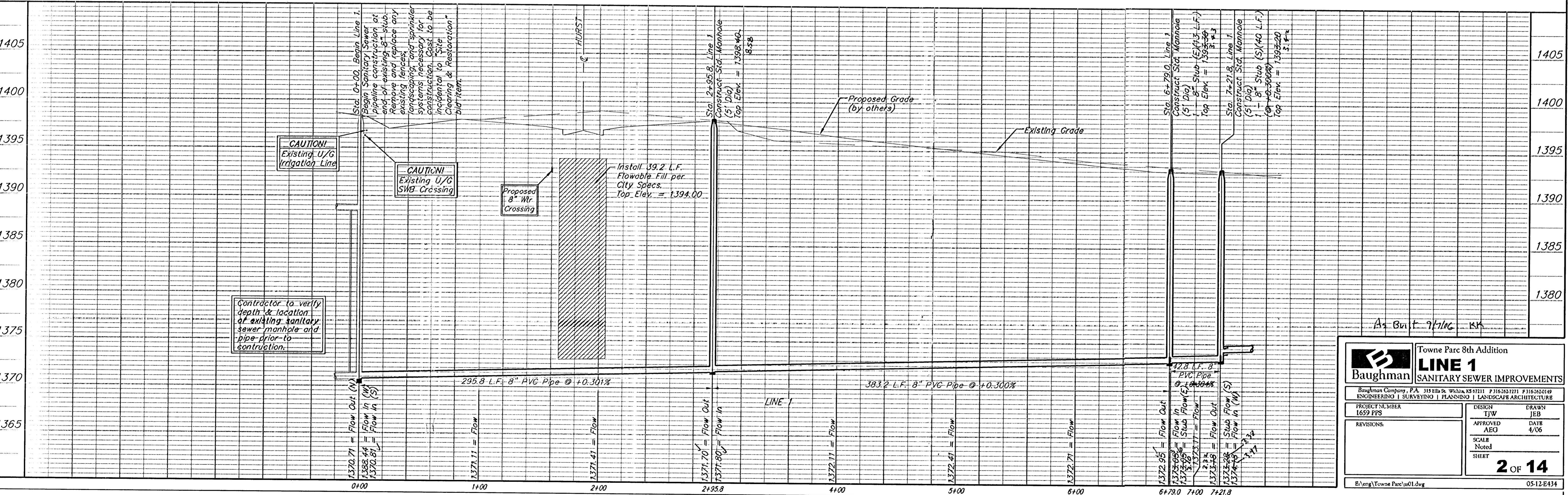
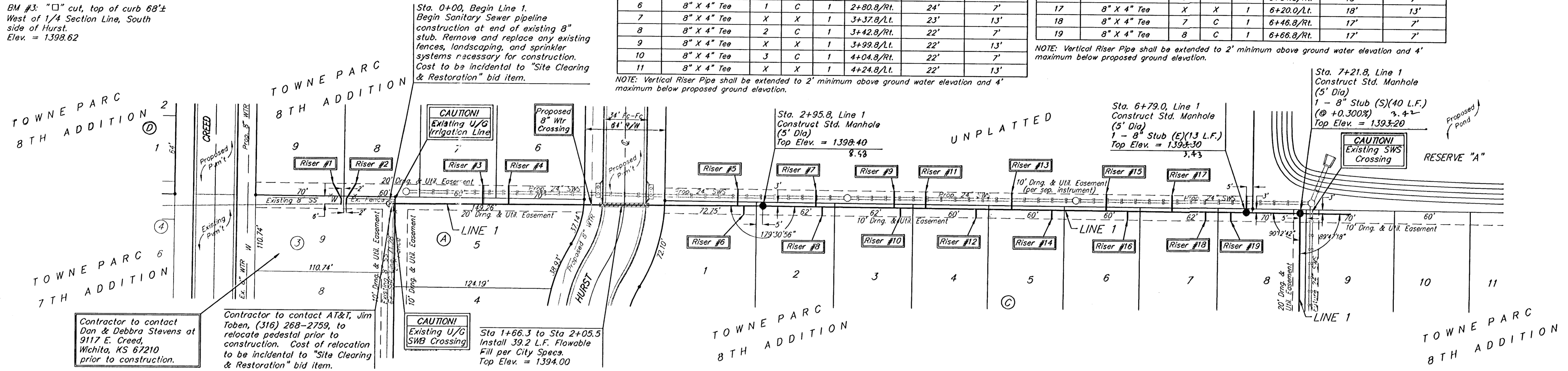
NOTE: Vertical Riser Pipe shall be extended to 2' minimum above ground water elevation and 4' maximum below proposed ground elevation.

SEWER SERVICE TABLE

NUMBER	TYPE	LOCATION				FOR INFORMATION ONLY	
		LOT NO.	BLOCK NO.	LINE NO.	STATION\ DIRECTION	APPROXIMATE LENGTH 4" PIPE	
						VERTICAL	HORIZONTAL
12	8" X 4" Tee	4	C	1	4+84.8/Rt.	20'	13'
13	8" X 4" Tee	X	X	1	4+93.0/Lt.	20'	13'
14	8" X 4" Tee	5	C	1	5+24.8/Rt.	19'	7'
15	8" X 4" Tee	X	X	1	5+67.9/Lt.	18'	13'
16	8" X 4" Tee	6	C	1	5+84.8/Rt.	18'	7'
17	8" X 4" Tee	X	X	1	6+20.0/Lt.	18'	13'
18	8" X 4" Tee	7	C	1	6+46.8/Rt.	17'	7'
19	8" X 4" Tee	8	C	1	6+66.8/Rt.	17'	7'

NOTE: Vertical Riser Pipe shall be extended to 2' minimum above ground water elevation and 4' maximum below proposed ground elevation.

Scale: 1" = 40' Horizontal
1" = 5' Vertical
• = Iron



Baughman Towne Parc 8th Addition
LINE 1
SANITARY SEWER IMPROVEMENTS

Baughman Company, P.A. 315 E. St. Wichita, KS 67211 P: 316-262-7771 F: 316-262-0149
ENGINEERING | SURVEYING | PLANNING | LANDSCAPE ARCHITECTURE

PROJECT NUMBER: 1659 PPS
DESIGN: ITW
DRAWN: JEB
APPROVED: AEG
DATE: 4/06
SCALE: Noted
SHEET: 2 OF 14

Revisions:
1. 4.12.06 = Flow Out (W)
2. 4.12.06 = Flow In (W)
3. 4.12.06 = Flow In (S)
4. 4.12.06 = Flow In (W)
5. 4.12.06 = Flow In (W)
6. 4.12.06 = Flow In (W)
7. 4.12.06 = Flow In (W)
8. 4.12.06 = Flow In (W)
9. 4.12.06 = Flow In (W)
10. 4.12.06 = Flow In (W)
11. 4.12.06 = Flow In (W)
12. 4.12.06 = Flow In (W)
13. 4.12.06 = Flow In (W)
14. 4.12.06 = Flow In (W)
15. 4.12.06 = Flow In (W)
16. 4.12.06 = Flow In (W)
17. 4.12.06 = Flow In (W)
18. 4.12.06 = Flow In (W)
19. 4.12.06 = Flow In (W)
20. 4.12.06 = Flow In (W)

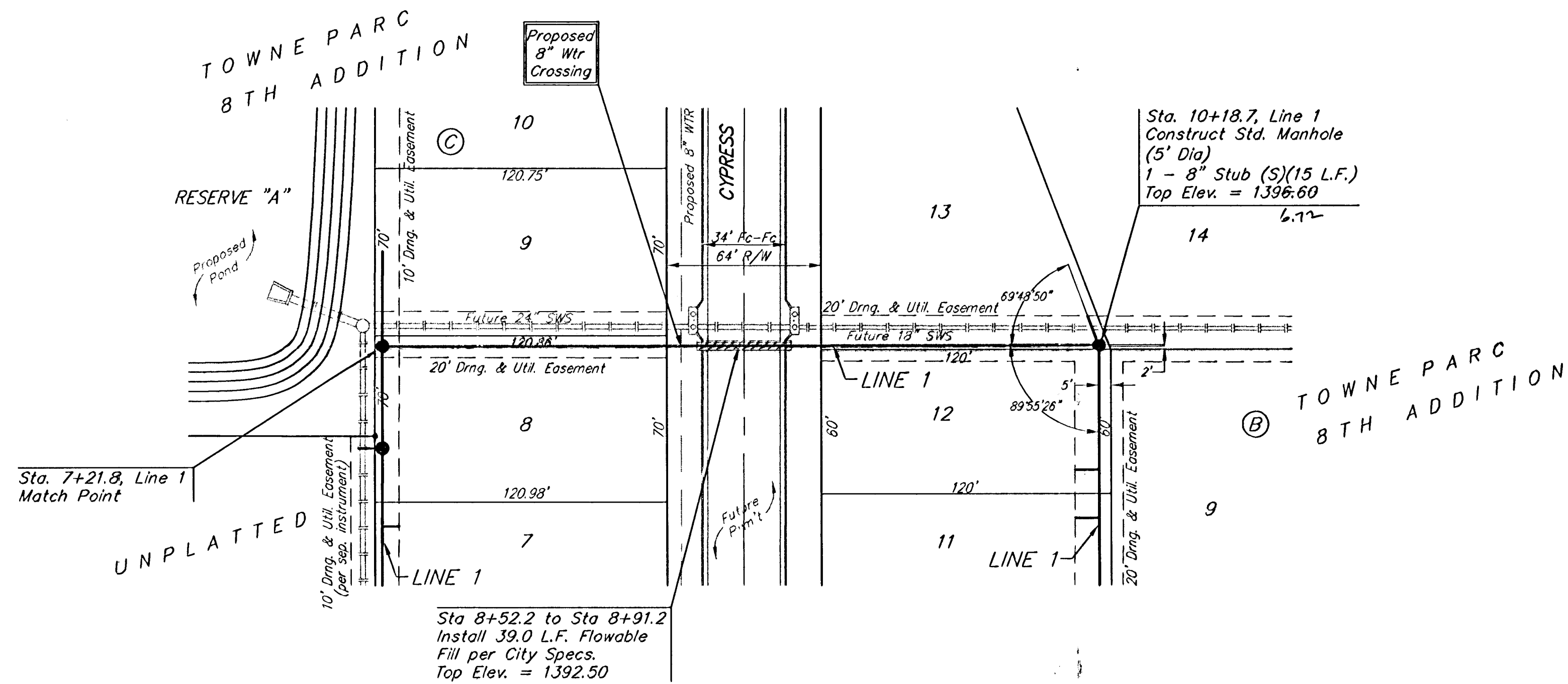
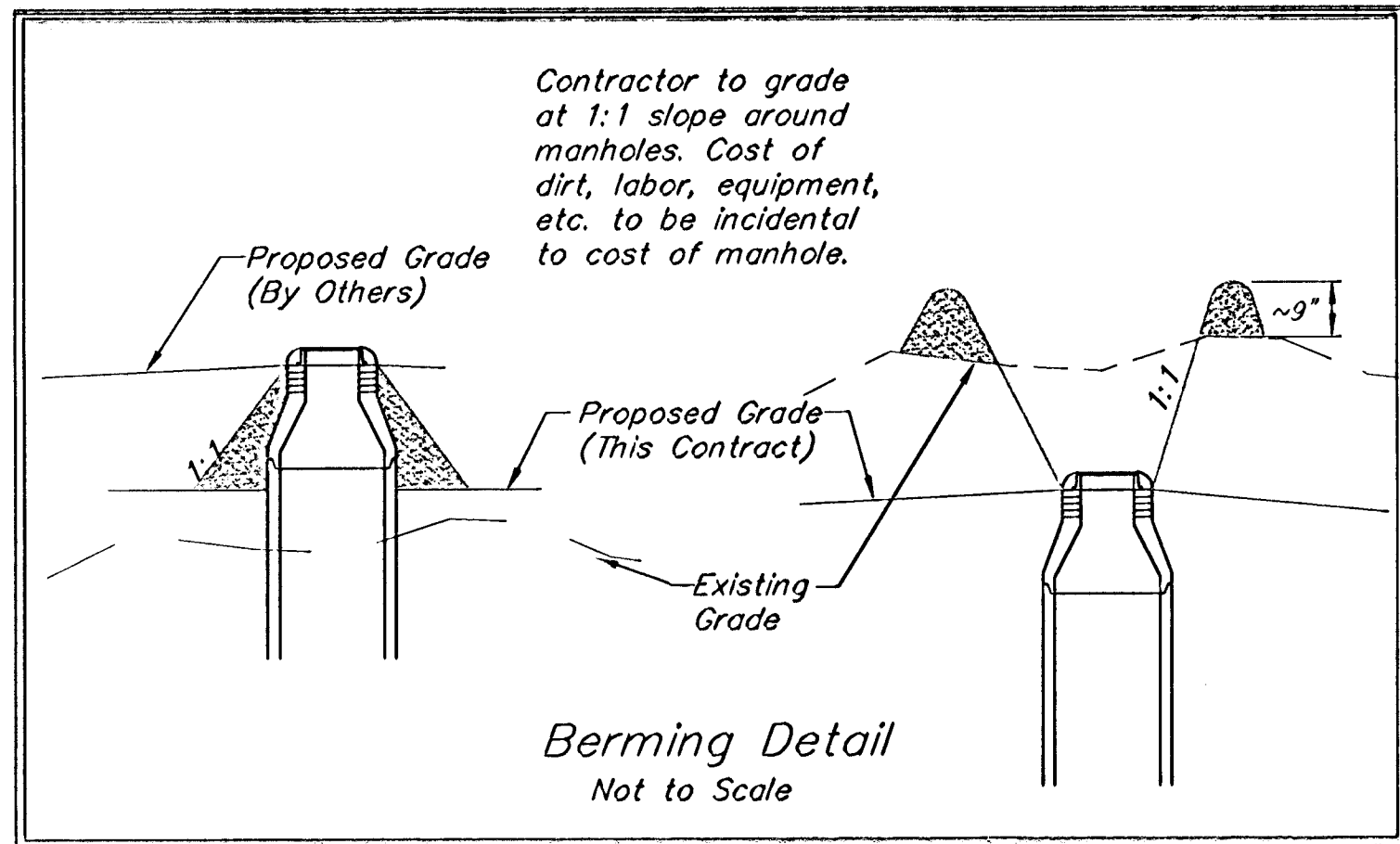
El:\eng\Towne Parc\01.dwg 05-12-04

BENCHMARKS:

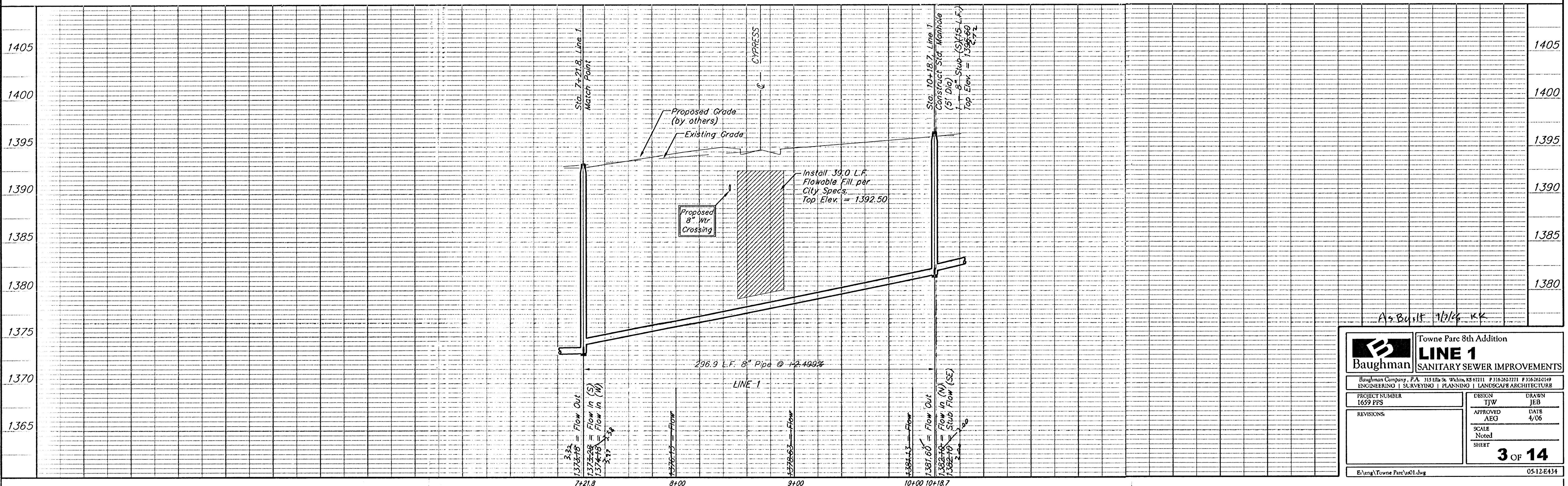
BM #1: C. O. W. benchmark, east of right-of-way, south of Pawnee, 31.80 feet east of center line of Webb Road, 4.60 feet north of north face of power pole.
Elev. = 1384.18 NGVD29

BM #2: "□" cut, top of east curb on Linden opposite P.C. in Lot 5, Block 2, Towne Parc 4th Addition
Elev. = 1397.09

BM #3: "□" cut, top of curb 68'± West of 1/4 Section Line, South side of Hurst.
Elev. = 1398.62



Scale: 1" = 40' Horizontal
1" = 5' Vertical
• = Iron



As Built 7/2/06 KK

Baughman		Towne Parc 8th Addition LINE 1 SANITARY SEWER IMPROVEMENTS	
Baughman Company, P.A. 315 Ellis St. Wilkes, KS 67151 P 316-282-7111 F 316-282-0149 ENGINEERING SURVEYING PLANNING LANDSCAPE ARCHITECTURE			
PROJECT NUMBER 1639 PPS	DESIGN TIW	DRAWN JEB	APPROVED AEG
REVISIONS	DATE 4/06	SCALE Noted	DATE 4/06
		3 OF 14	
E:\eng\Towne Parc\ss01.dwg		05-12-E434	

BENCHMARKS:

BM #1: C. O. W. benchmark, east of right-of-way, south of Pawnee, 31.80 feet east of center line of Webb Road, 4.60 feet north of north face of power pole. Elev. = 1384.18 NGVD29

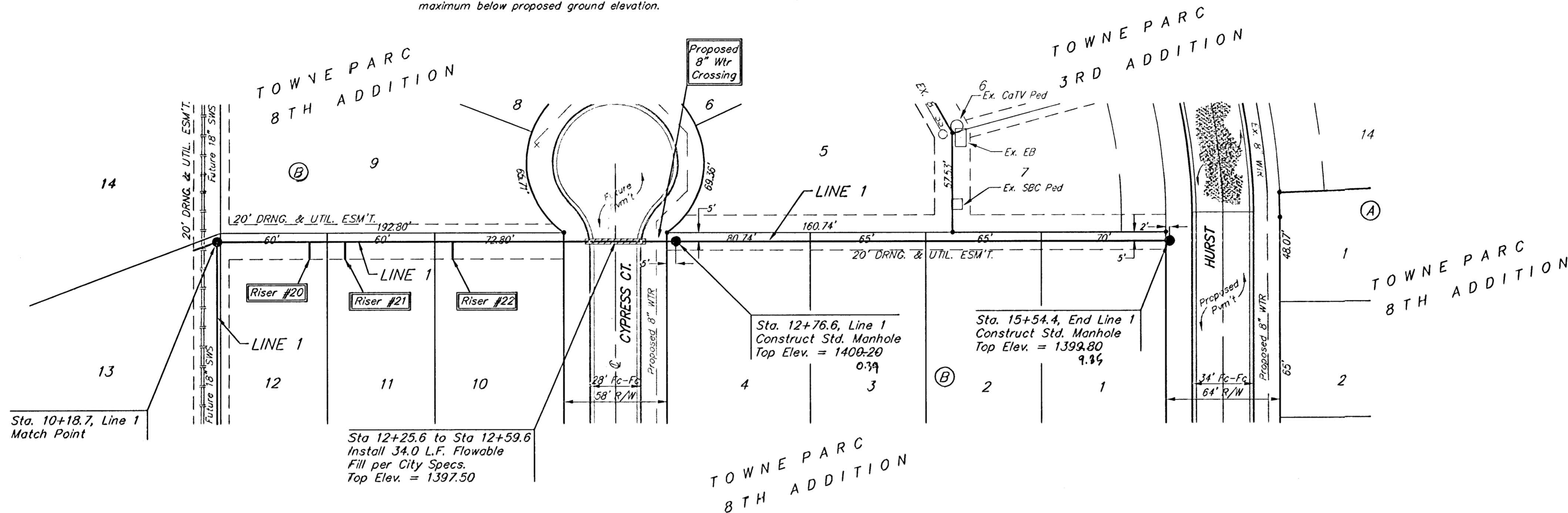
BM #2: "□" cut, top of east curb on Linden opposite P.C. in Lot 5, Block 2, Towne Parc 4th Addition. Elev. = 1397.09

BM #3: "□" cut, top of curb 68'± West of 1/4 Section Line, South side of Hurst. Elev. = 1398.62

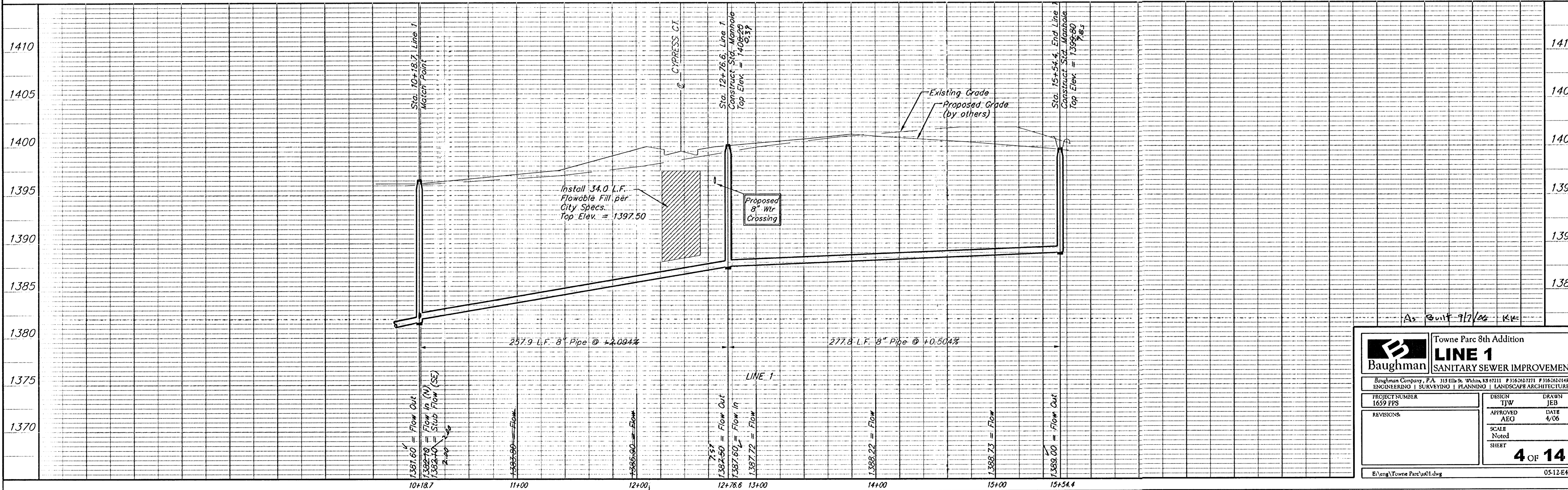
SEWER SERVICE TABLE

NUMBER	TYPE	LOCATION			FOR INFORMATION ONLY		
		LOT NO.	BLOCK NO.	LINE NO.	STATION \ DIRECTION	APPROXIMATE LENGTH 4" PIPE	VERTICAL
20	8" X 4" Tee	12	B	1	10+70.7/Rt.	10'	10'
21	8" X 4" Tee	11	B	1	10+90.7/Rt.	10'	10'
22	8" X 4" Tee	10	B	1	11+50.7/Rt.	10'	10'

NOTE: Vertical Riser Pipe shall be extended to 2' minimum above ground water elevation and 4' maximum below proposed ground elevation.



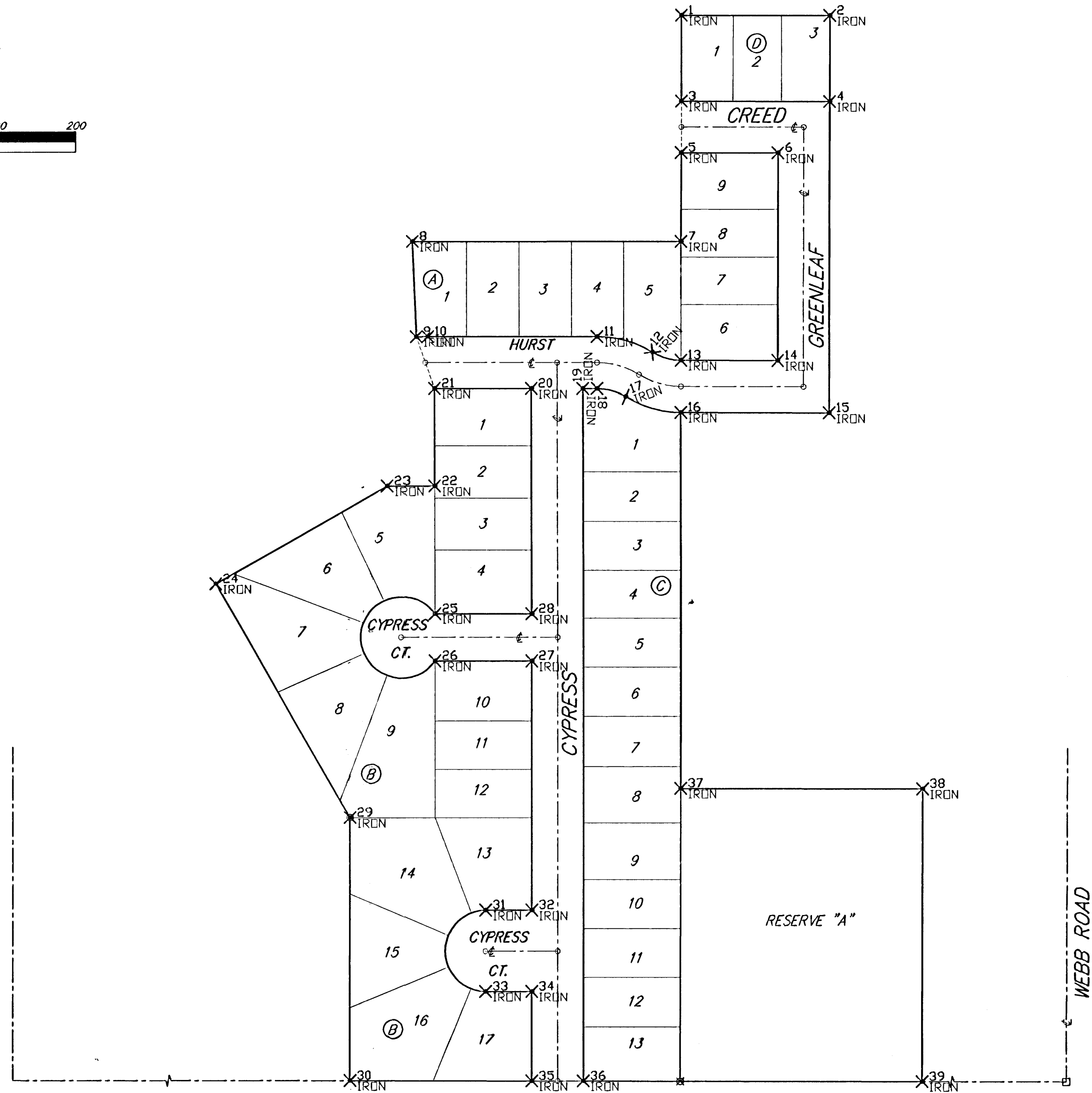
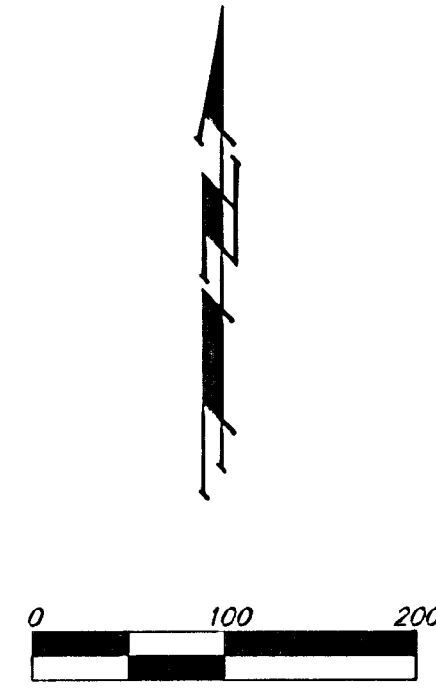
Scale: 1" = 40' Horizontal
1" = 5' Vertical
• = Iron



		Towne Parc 8th Addition LINE 1 SANITARY SEWER IMPROVEMENTS	
Baughman Company, P.A. 315 Ellis St. White, KS 67111 P 316-262-7171 F 316-262-0149 ENGINEERING SURVEYING PLANNING LANDSCAPE ARCHITECTURE			
PROJECT NUMBER 1659 PPS	DESIGN TJW	DRAWN JEB	DATE 4/06
REVISIONS:	APPROVED AEG	SCALE Notes	SHEET 4 OF 14
E:\eng\Towne Parc\01.dwg		05-12-E434	

TOWNE PARC 8TH ADDITION

WICHITA, SEDGWICK COUNTY, KANSAS



#	NORTHING	EASTING	DESC.
1	6331.4125	3681.9176	IRON
2	6331.2198	3865.9175	IRON
3	6221.4169	3681.7355	IRON
4	6221.1073	3865.7324	IRON
5	6157.4169	3681.6251	IRON
6	6157.2151	3801.6249	IRON
7	6046.6820	3681.4389	IRON
8	6046.5745	3348.1362	IRON
9	5926.4196	3352.8314	IRON
10	5926.6963	3367.0974	IRON
11	5926.6963	3577.1181	IRON
12	5907.3721	3645.8797	IRON
13	5897.4173	3681.1877	IRON
14	5897.2154	3801.1878	IRON
15	5833.1079	3865.0801	IRON
16	5833.4174	3681.0804	IRON
17	5852.7414	3612.5407	IRON
18	5862.6963	3577.1181	IRON
19	5862.6825	3559.3637	IRON
20	5862.6825	3495.3637	IRON
21	5862.6963	3375.3637	IRON
22	5742.6825	3375.3637	IRON
23	5742.6825	3317.8306	IRON
24	5619.6362	3104.9123	IRON
25	5581.9415	3375.3637	IRON
26	5523.9415	3375.3637	IRON
27	5523.9415	3495.3637	IRON
28	5581.9415	3495.3637	IRON
29	5331.2688	3271.3023	IRON
30	5003.2546	3271.2506	IRON
31	5216.8630	3438.0482	IRON
32	5216.8630	3495.3637	IRON
33	5116.8630	3438.0482	IRON
34	5116.8630	3495.3637	IRON
35	5002.7849	3495.3637	IRON
36	5002.6664	3559.3637	IRON
37	5367.4432	3680.2970	IRON
38	5366.8880	3980.2965	IRON
39	5001.8885	3979.6828	IRON

Towne Parc 8th Addition	
COORDINATE INFORMATION	
Baughman Company, P.A. 315 Ellis St. Wichita, KS 67211 F3162621271 F3162620149 ENGINEERING SURVEYING PLANNING LANDSCAPE ARCHITECTURE	
PROJECT NUMBER 1659 PPS	DESIGN TJW
APPROVED AEG	DRAWN TJW
REVISIONS	DATE 4/06
SCALE Noted	
13 OF 14	
F:\Stake\Towne Parc 8th\dwg\SScoords.dwg 05-12-E434	

