

**STORM WATER SEWER IMPROVEMENTS
TO SERVE
REFLECTION RIDGE WEST 2ND ADDITION**

**BLOCK 1, LOT 1
CITY OF WICHITA, KANSAS
JAMES ARMOUR, P.E. CITY ENGINEER
1663 PPS 607861 OCA**

LEGAL DESCRIPTION

Lots 1, 2, 3 & 4, Block 1 & Reserves A, B, C, & D,
All in Reflection Ridge West, an Addition to
Wichita, Sedgwick County, Kansas

BENCH MARKS:

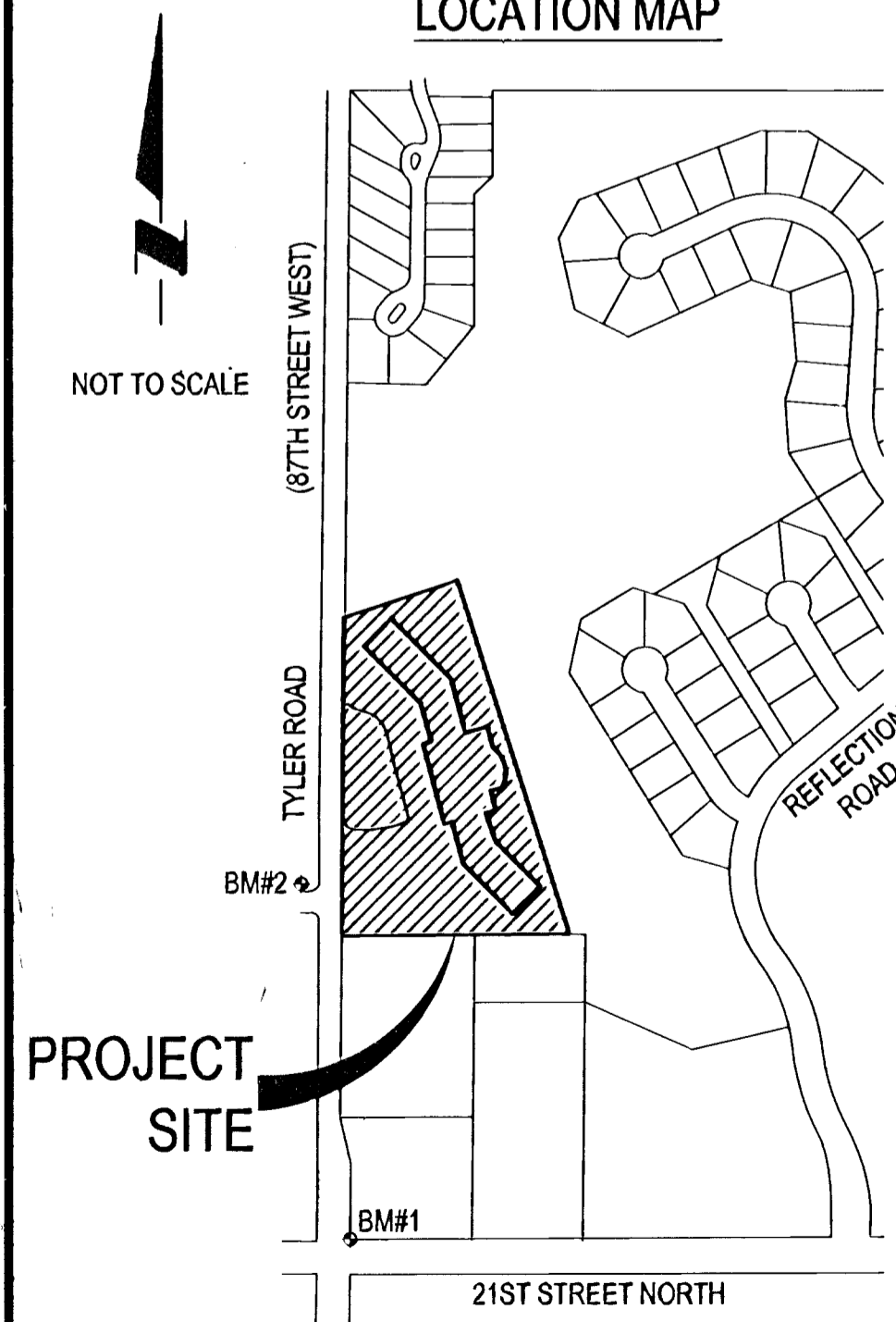
Benchmark: BM#1
City of Wichita disk at NE corner of 21st & Tyler
Elevation: 170.95 City Datum
Elevation: 1358.35 N.G.V.D.

On Site Benchmark: BM#2
Top of fire hydrant on west side of Tyler 88.5' West
and 116' North of Southwest Corner of Plat.
Elevation: 168.56 City Datum
Elevation: 1355.96 N.G.V.D.

INDEX

Cover Sheet	1
Detention Cell Sheet	2
Plan/Profile Sheets	3 - 5
Detail Sheets	6 - 10

LOCATION MAP



**APPROVED AS NOTED
By CITY ENGINEER OF WICHITA**

Storm Sewer *227 6/21/06*

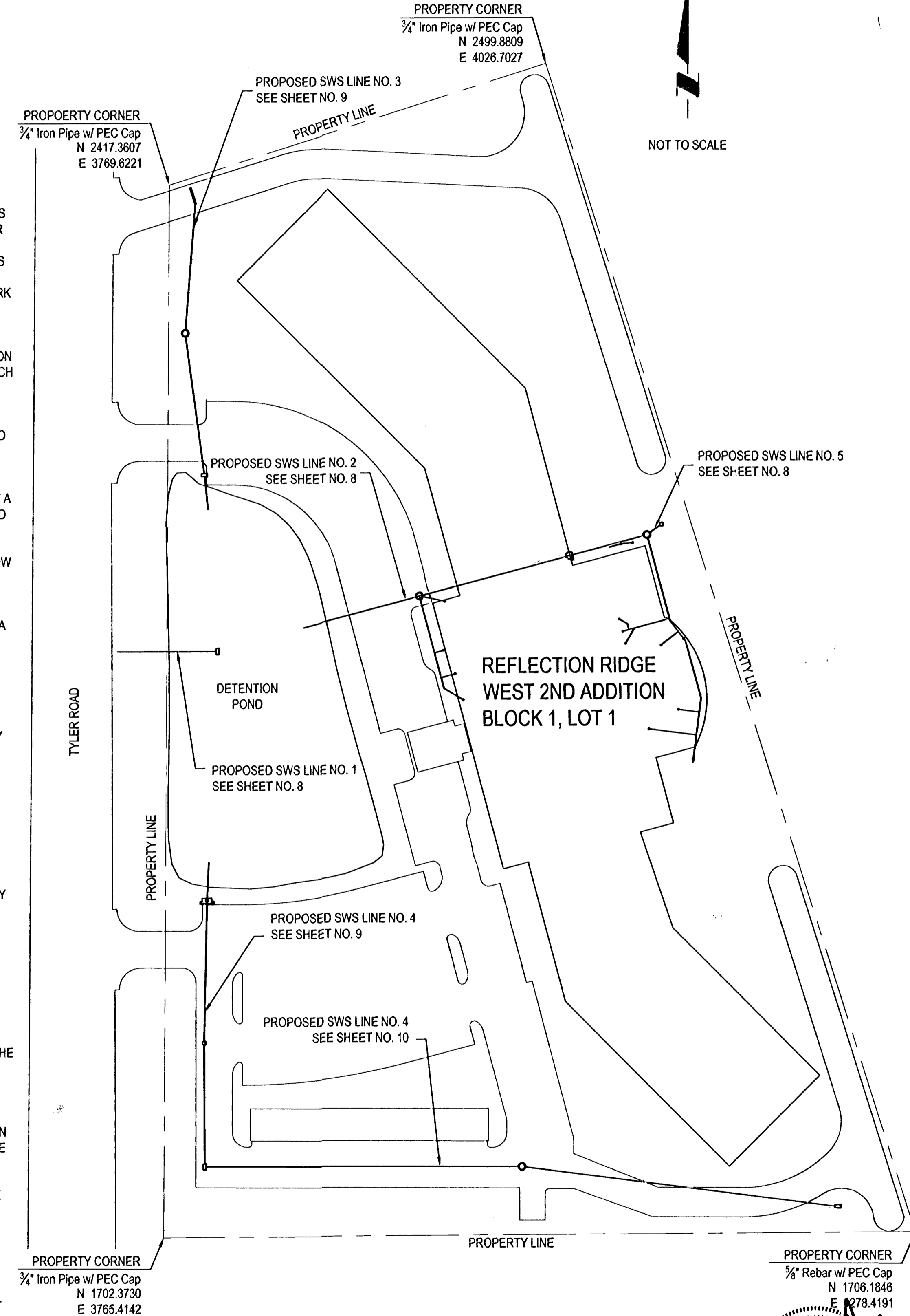
NOTICE TO CONTRACTOR

INSPECTION AND TESTING FOR THIS PROJECT IS TO BE PROVIDED BY A LICENSED CONSULTING ENGINEERING FIRM CONTRACTED BY THE OWNER/DEVELOPER. SAID INSPECTION TO BE IN ACCORDANCE WITH THE CITY OF WICHITA STANDARD CONSTRUCTION ENGINEERING PRACTICES AND CERTIFIED BY A LICENSED PROFESSIONAL ENGINEER. NO WORK SHALL BE PERFORMED IN DEDICATED EASEMENTS OR PUBLIC RIGHT-OF-WAY BY THE CONTRACTOR UNTIL SUCH INSPECTION IS ARRANGED FOR AND REQUIRED BONDS HAVE BEEN SUBMITTED TO AND APPROVED BY THE CITY NOR SHALL ANY WORK BE COMMENCED IN DEDICATED EASEMENTS OR PUBLIC RIGHT-OF-WAY WITHOUT WRITTEN AUTHORIZATION BY THE CITY ENGINEER. IMPROVEMENTS PERFORMED UNDER THIS PROJECT SHALL NOT BE ACCEPTED BY THE CITY UNTIL ALL APPLICABLE DOCUMENTATION HAS BEEN SUBMITTED TO THE CITY ENGINEER. THIS MAY INCLUDE: RECORD DRAWINGS, INSPECTION LOGS, TEST DOCUMENTATION, TV TAPES, AND A CERTIFICATE OF COMPLETION. THE ABOVE SHALL BE PERFORMED BY THE CONSULTING FIRM CONTACTED TO INSPECT THIS PROJECT.

GENERAL NOTES

- UNDERGROUND UTILITY SERVICE LINES AND OVERHEAD UTILITY POLE LINES ARE TO BE ADJUSTED AS NECESSARY BY OTHERS PRIOR TO CONSTRUCTION UNLESS THE PLANS SPECIFICALLY CALL FOR THEIR ADJUSTMENT BY THE CONTRACTOR. EXISTING UTILITIES AND THEIR LOCATION, AS SHOWN ON THE PLANS, REPRESENT THE BEST INFORMATION OBTAINABLE FOR DESIGN. LOCATION INFORMATION HAS BEEN OBTAINED FROM THE VARIOUS UTILITY COMPANIES AND IS EITHER FROM COMPANY RECORD DRAWINGS OR COMPANY PROVIDED FIELD LOCATIONS. THE CONTRACTOR WILL BE REQUIRED TO WORK AROUND EXISTING UTILITIES WHICH DO NOT CONFLICT WITH PROPOSED CONSTRUCTION. CONTRACTOR SHALL SATISFY HIMSELF OF SUBSURFACE CONDITIONS PRIOR TO BIDDING.
- TREES AND SHRUBS IN PUBLIC WHICH ARE IN DIRECT CONFLICT WITH PROPOSED NEW CONSTRUCTION SHALL BE REMOVED BY THE CONTRACTOR WITH THE OWNER'S APPROVAL. TREES AND SHRUBS WHICH ARE NOT IN DIRECT CONFLICT WITH PROPOSED NEW CONSTRUCTION SHALL BE SAVED AND PROTECTED FROM DAMAGE.
- RUBBLE FROM THE REMOVAL OF MISCELLANEOUS STRUCTURES SHALL BE DISPOSED OF ON SITES TO BE PROVIDED BY THE CONTRACTOR AND APPROVED AS NOTED.
- ALL DISPOSAL SITES MUST BE APPROVED BY THE KANSAS DEPARTMENT OF HEALTH AND ENVIRONMENT. MATERIAL EITHER STOCKPILED OR DISPOSED OF IN A FLOOD PLAIN WOULD REQUIRE A KANSAS STATE BOARD OF AGRICULTURE PERMIT. ANY MATERIAL DUMPED IN WATERS OF THE UNITED STATES OR WETLANDS IS SUBJECT TO U.S. CORPS OF ENGINEERS PERMITTING REGULATIONS. ANY MATERIAL BURIED OR STOCKPILED BEYOND APPROVED CONSTRUCTION LIMITS WOULD REQUIRE ADDITIONAL ARCHEOLOGICAL INVESTIGATIONS UNLESS BURIED IN A PREVIOUSLY APPROVED BORROW LOCATION.
- CONTRACTOR SHALL PROVIDE A MINIMUM SEVENTY-TWO (72) HOUR ADVANCE NOTICE (EXCLUDING WEEKENDS AND HOLIDAYS) PRIOR TO BEGINNING ANY EXCAVATION, TO KANSAS ONE-CALL SYSTEM, A UTILITY LOCATION SERVICE, AT (316) 687-2470 TO REQUEST THE FOLLOWING UTILITY COMPANIES TO LOCATE ALL EXISTING LINES WITHIN THE PROJECT AREA: K.G.S. GAS, AQUILA NETWORK, WESTAR ENERGY, SBC COX COMMUNICATIONS, CITY OF WICHITA SEWER MAINTENANCE AND CITY OF WICHITA WATER DEPARTMENT.
- THE CONTRACTOR SHALL BE RESPONSIBLE FOR PRESERVING PROPERTY IRONS. THE CONTRACTOR WILL BE REQUIRED TO RE-ESTABLISH ANY PROPERTY IRONS WHICH ARE DAMAGED OR DESTROYED BY HIS CONSTRUCTION OPERATIONS. SUCH IRONS SHALL BE RE-ESTABLISHED BY A LICENSED LAND SURVEYOR IN ACCORDANCE WITH STATE LAWS.
- ALL AREAS DISTURBED DURING CONSTRUCTION SHALL BE SEEDED, FERTILIZED, AND MULCHED ACCORDING TO CITY OF WICHITA STANDARDS AND SPECIFICATIONS.
- ALL CONSTRUCTION MATERIALS AND PROCEDURES SHALL BE IN ACCORDANCE WITH THE CITY OF WICHITA STANDARDS AND SPECIFICATIONS FOR STORM SEWER CONSTRUCTION.
- THE CONTRACTOR SHALL GIVE ALL PROPERTY OWNERS AND/OR TENANTS OF DEVELOPED PROPERTY ADJUTING THE CONSTRUCTION OF THIS PROJECT A MINIMUM OF TEN (10) DAYS ADVANCE NOTICE PRIOR TO START OF CONSTRUCTION.
- THE WATER DEPARTMENT SHALL FIELD LOCATE WATER VALVES ONE TIME DURING CONSTRUCTION WHEN REQUESTED BY THE CONTRACTOR. IT SHALL BE THE CONTRACTOR'S RESPONSIBILITY TO PRESERVE SUCH FIELD LOCATIONS DURING THE CONSTRUCTION PROCESS. WATER VALVES, WATER VALVE BOXES OR FIRE HYDRANTS DAMAGED DURING CONSTRUCTION SHALL BE REPAIRED BY THE CONTRACTOR AT HIS EXPENSE.
- ALL APPROVED EXCESS EXCAVATION WHICH IS TO BE WASTED SHALL BE DISPOSED OF ON SITE BY THE CONTRACTOR AT NO ADDITIONAL COST TO THE OWNER. CONTRACTOR SHALL COORDINATE LOCATIONS OF STOCKPILE WITH THE OWNER.
- EROSION CONTROL (BMP'S)
THE CONTRACTOR SHALL INSTALL AND/OR MAINTAIN EROSION CONTROL METHODS AS SPECIFIED ON SHEETS 6-14 OF THE WATER IMPROVEMENT PROJECT PLANS, PROJECT #???. INSTALLATION OF THESE BMP'S DOES NOT RELIEVE THE CONTRACTOR OF THE RESPONSIBILITY OF ABATING SOIL EROSION.
- PVC PIPE SHALL BE SOLID WALL, SDR 35. DUCTILE IRON PIPE SHALL BE CLASS 51. RC PIPE SHALL BE CLASS III.
- ALL BARRIERS AND DETOUR SIGNAGE SHALL BE IN ACCORDANCE WITH THE MANUAL ON UNIFORM TRAFFIC CONTROL DEVICES.
- THE PAY ITEM "IN LINE CLEANOUT" SHALL INCLUDE ALL CONNECTION MATERIAL. ALL OTHER EQUIPMENT AND LABOR REQUIRED TO INSTALL THE CLEANOUT SHALL BE INCLUDED IN THE PAYMENT OF "EACH".
- THE PAY ITEM "12" DURASLOT SURFACE DRAIN" SHALL INCLUDE THE PIPE, ADAPTER, END CAP, FLOWABLE FILL AND ANY OTHER CONNECTION MATERIALS SPECIFIED BY THE MANUFACTURER. ALL OTHER EQUIPMENT AND LABOR REQUIRED TO INSTALL THE SURFACE DRAIN SHALL BE INCLUDED IN THE PAYMENT OF "EACH".

SITE MAP



E&A CONSULTING GROUP, INC.
ENGINEERS • PLANNERS • SURVEYORS
7130 SOUTH 28TH STREET, SUITE D
LINCOLN, NE 68506-6944
PHONE: (402) 420-7217
FAX: (402) 420-7218

330 N. 117TH STREET
OMAHA, NE 68154
PHONE: (402) 895-4700
FAX: (402) 895-3599

8200 Coody Drive - Suite G2
Lincoln, Nebraska 68512
P * 402-420-2311
F * 402-420-2324



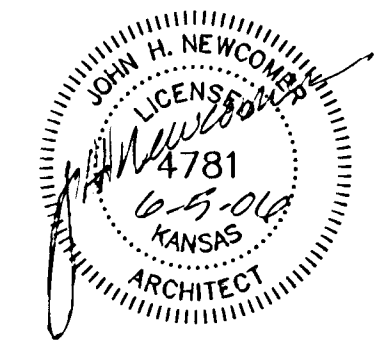
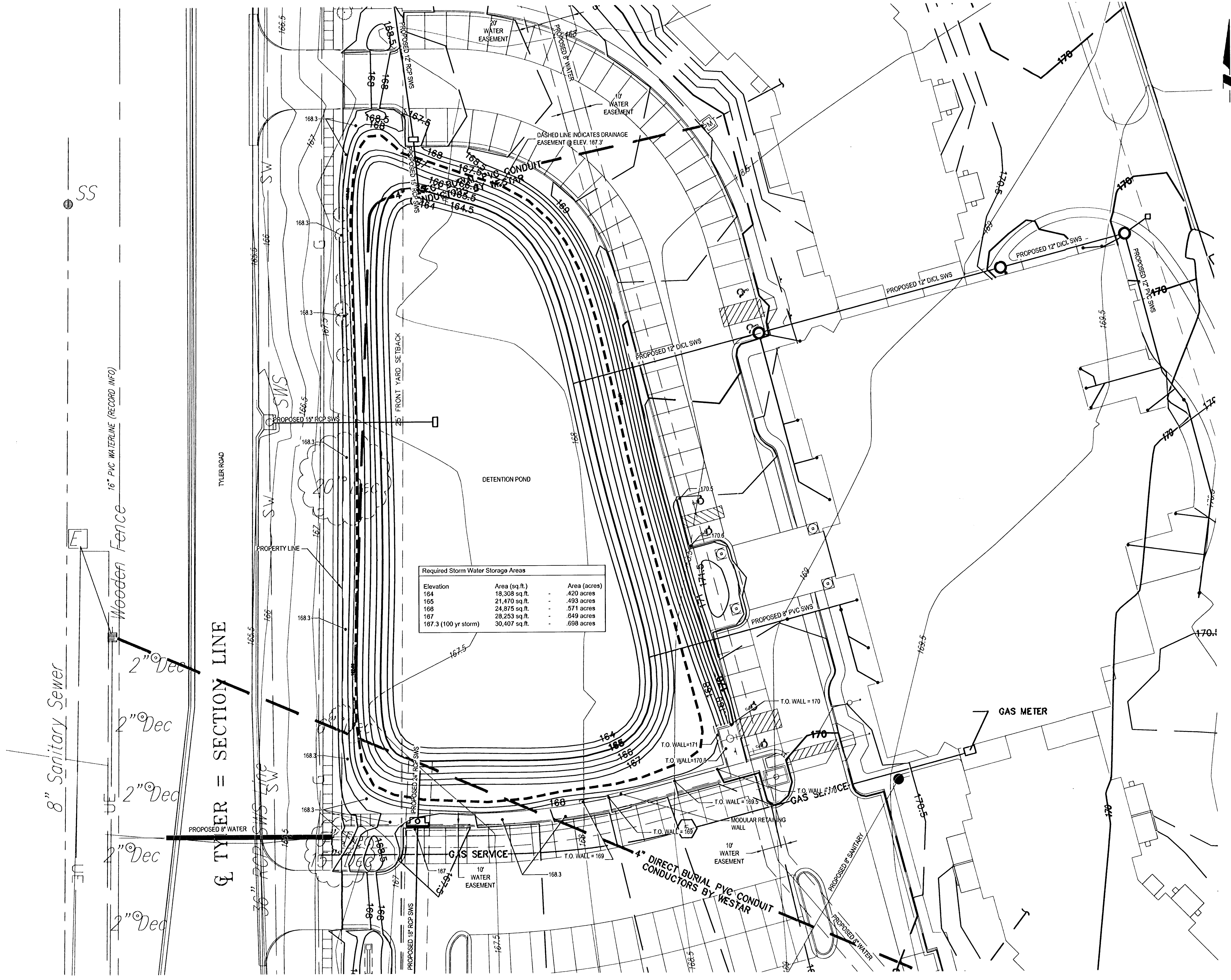
Reflection Ridge Adult Living Community

Wichita, Kansas - 67205
2300 North Tyler Road

PROJECT NO.
2005213.01
DATE
05-31-2006
REVISIONS

Sheet 01 of 10
SIS Sheet

AS-BUILT 8-30-06 HRF WJED



Scale: Horiz. 1"=20'

E&A CONSULTING GROUP, INC.
ENGINEERS • PLANNERS • SURVEYORS

E&A
330 N. 117TH STREET
OMAHA, NE 68154
PHONE: (402) 895-4700
895-4700
FAX: (402) 895-3599

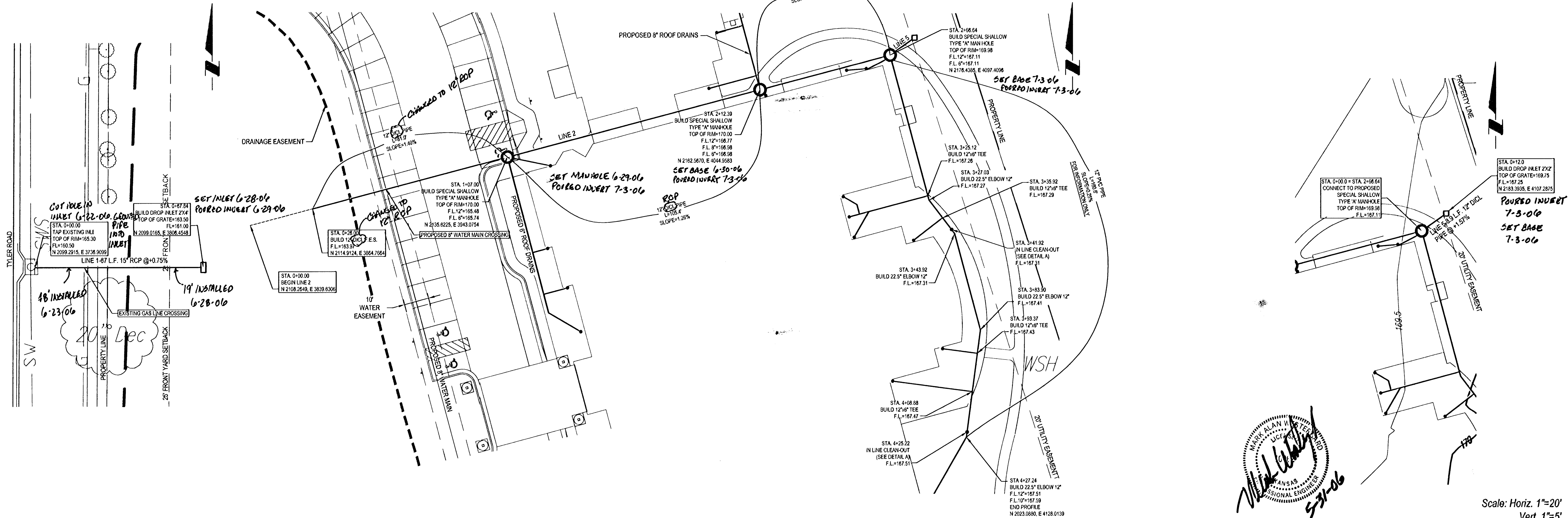
8200 Cody Drive - Suite G2
Lincoln, Nebraska 68512
P * 402.420.2311
F * 402.420.2324

CAMERON
GENERAL CONTRACTORS

Reflection Ridge Adult Living Community
Wichita, Kansas - 67205

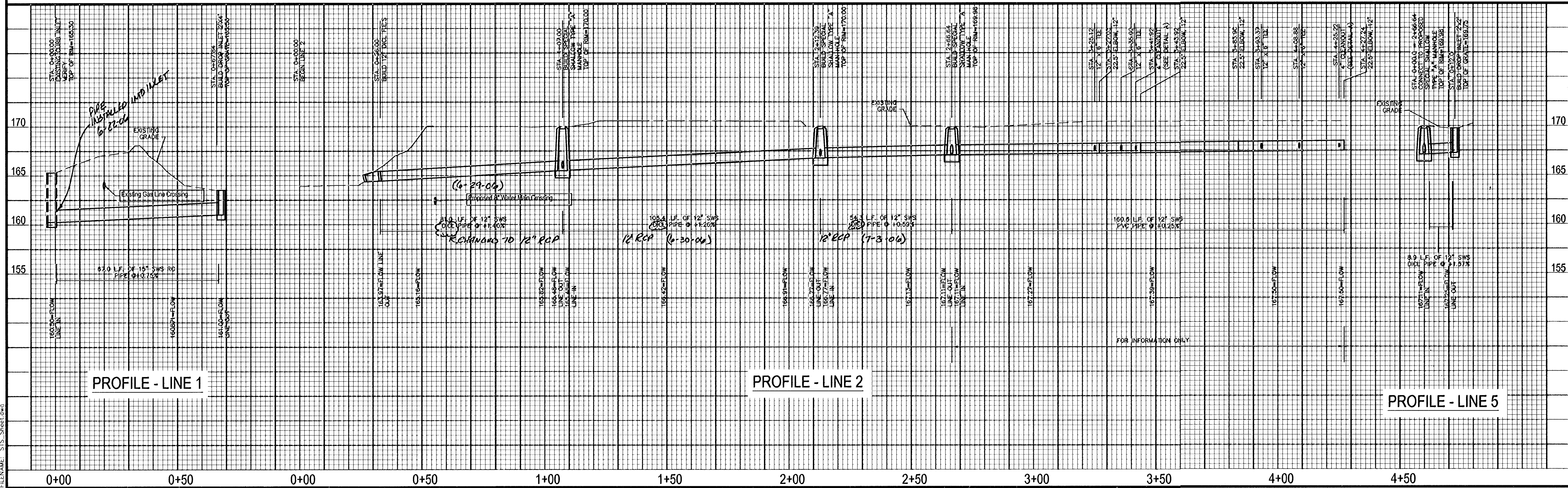
2300 North Tyler Road

PROJECT NO. 2005213.01
DATE 05-31-2008
REVISIONS
Sheet 02 of 10
5/5 Sheet



Professional Engineer
 State of Kansas
 No. 531-06
 Mark W. Kelly

Scale: Horiz. 1"=20'
 Vert. 1"=5'



AS-BUILT 8-30-06 ADF/WJ/ED

E&A CONSULTING GROUP, INC.
 ENGINEERS • PLANNERS • SURVEYORS

8200 Cody Drive - Suite C2
 Lincoln, Nebraska 68512
 P * 402.420.2311
 F * 402.420.2324
 885-4700
 FAX: (402) 885-3599

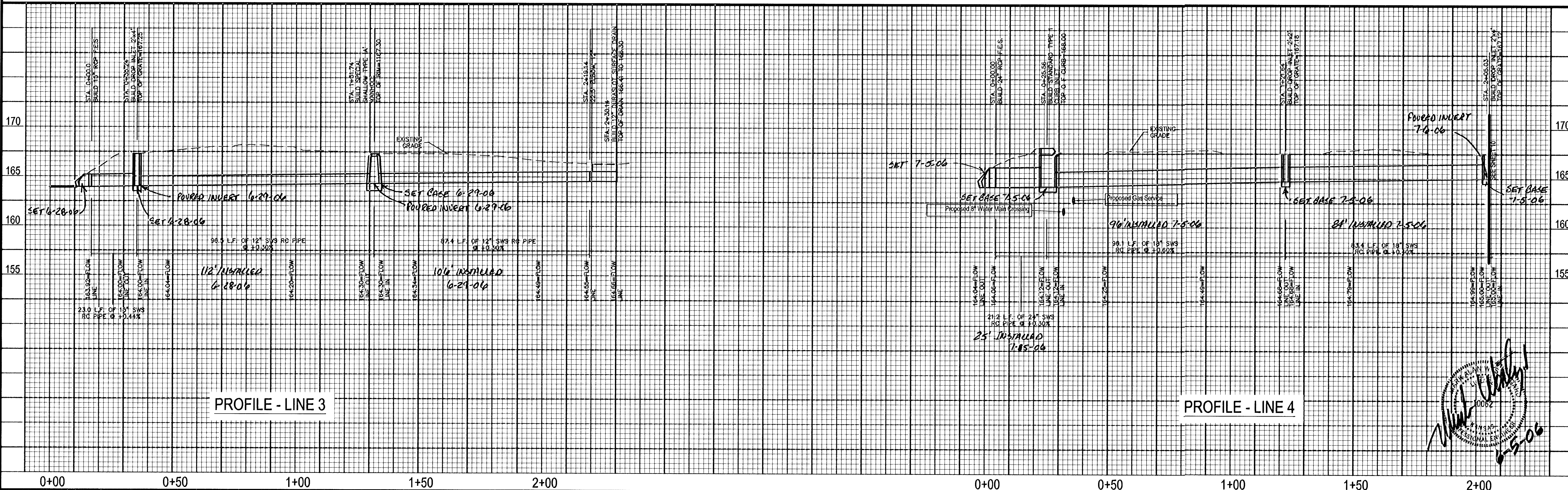
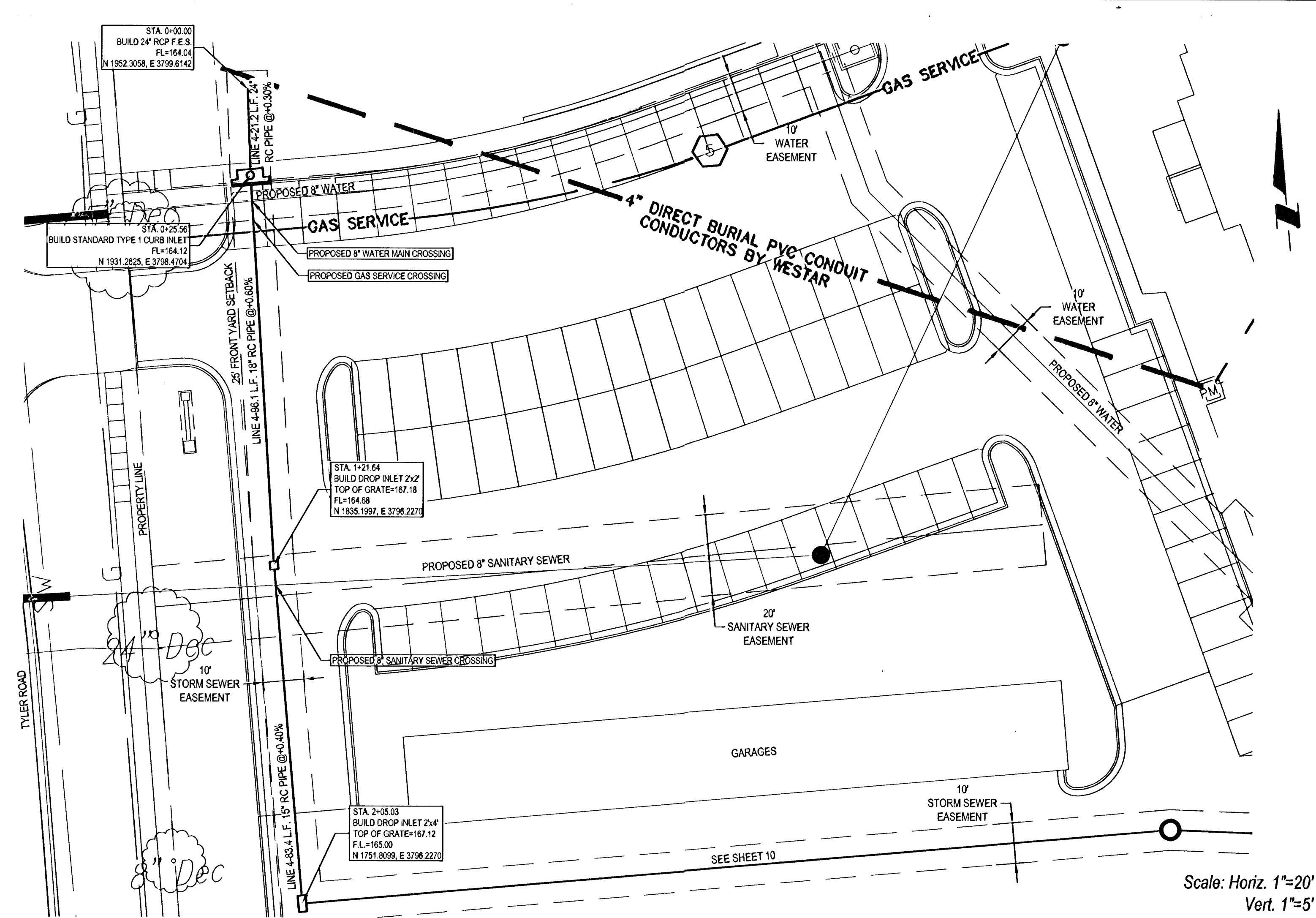
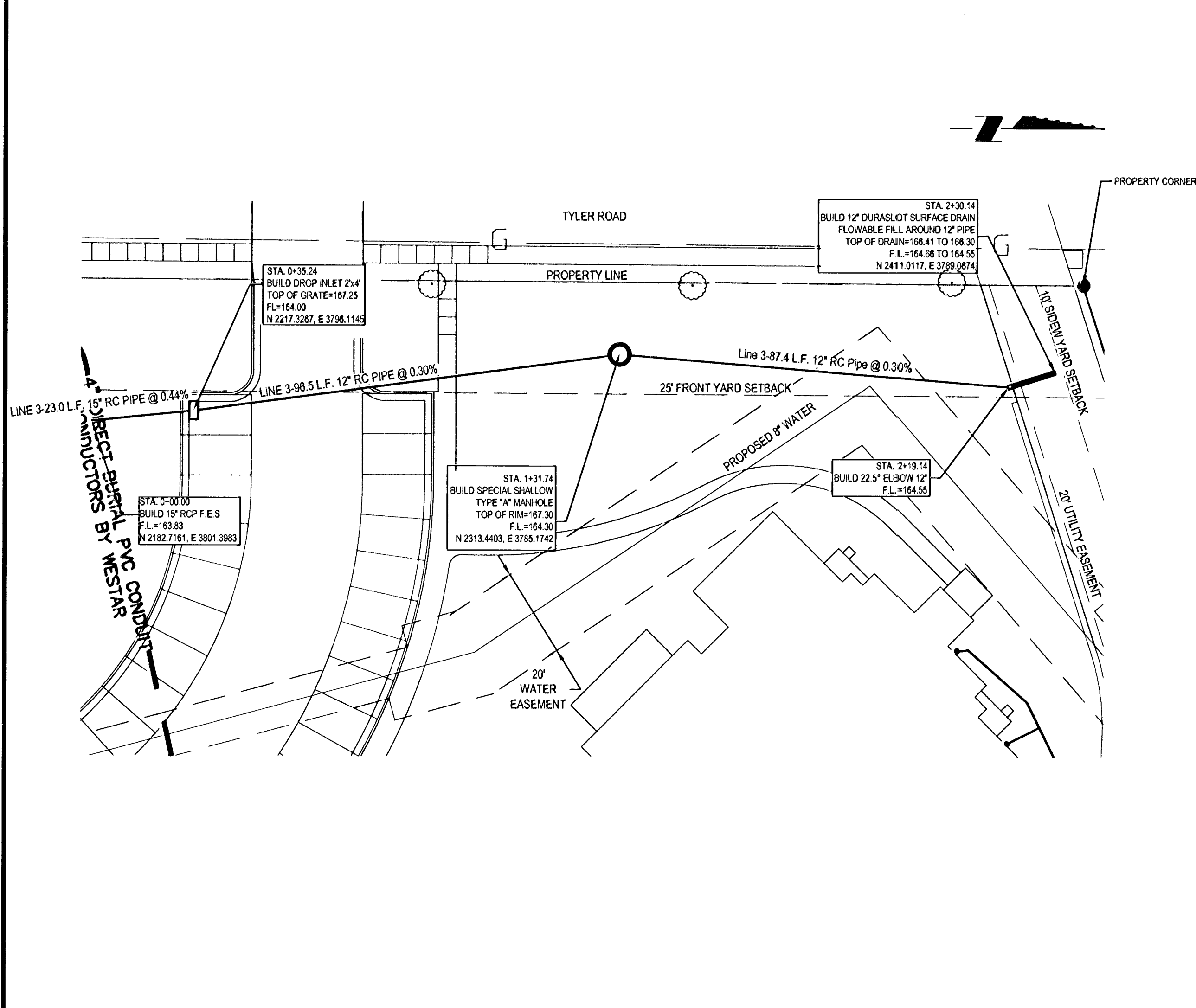
Reflection Ridge Adult Living Community
 2300 North Tyler Road
 Wichita, Kansas - 67205

PROJECT NO.
 2005213.01
 DATE
 05-31-2006
 REVISIONS

Sheet 03 of 10
 SJS Sheet

FILENAME: SJS_Sheet.dwg

FILENAME: SJS_Sheet.dwg



Michael J. Winters

 8-5-06

E&A CONSULTING GROUP, INC.
 ENGINEERS • PLANNERS • SURVEYORS
 7130 SOUTH 29TH STREET, SUITED
 LINCOLN, NE 68516-9841
 PHONE: (402) 420-1217
 FAX: (402) 420-1218

CAMERON
 GENERAL CONTRACTORS
 8200 Cody Drive - Suite G2
 Lincoln, Nebraska 68512
 P * 402.420.2311
 F * 402.420.2324

Reflection Ridge Adult Living Community
 2300 North Tyler Road
 Wichita, Kansas - 67205

PROJECT NO. 2005213.01
 DATE 05-31-2006
 REVISIONS

Sheet 04 of 10
 STS Sheet

AS-BUILT 8-30-06 HOF/WCED

