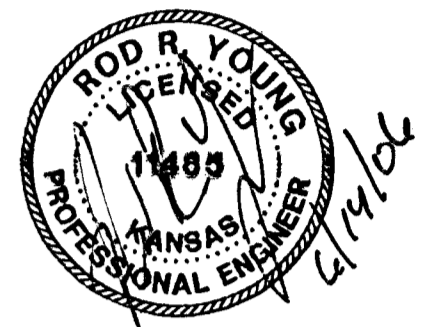


PRIVATE STORM WATER SEWER IMPROVEMENTS

TO SERVE
 LOT 1, BLOCK 1
 HOME BANK & TRUST COMPANY ADDITION
HOME BANK & TRUST COMPANY

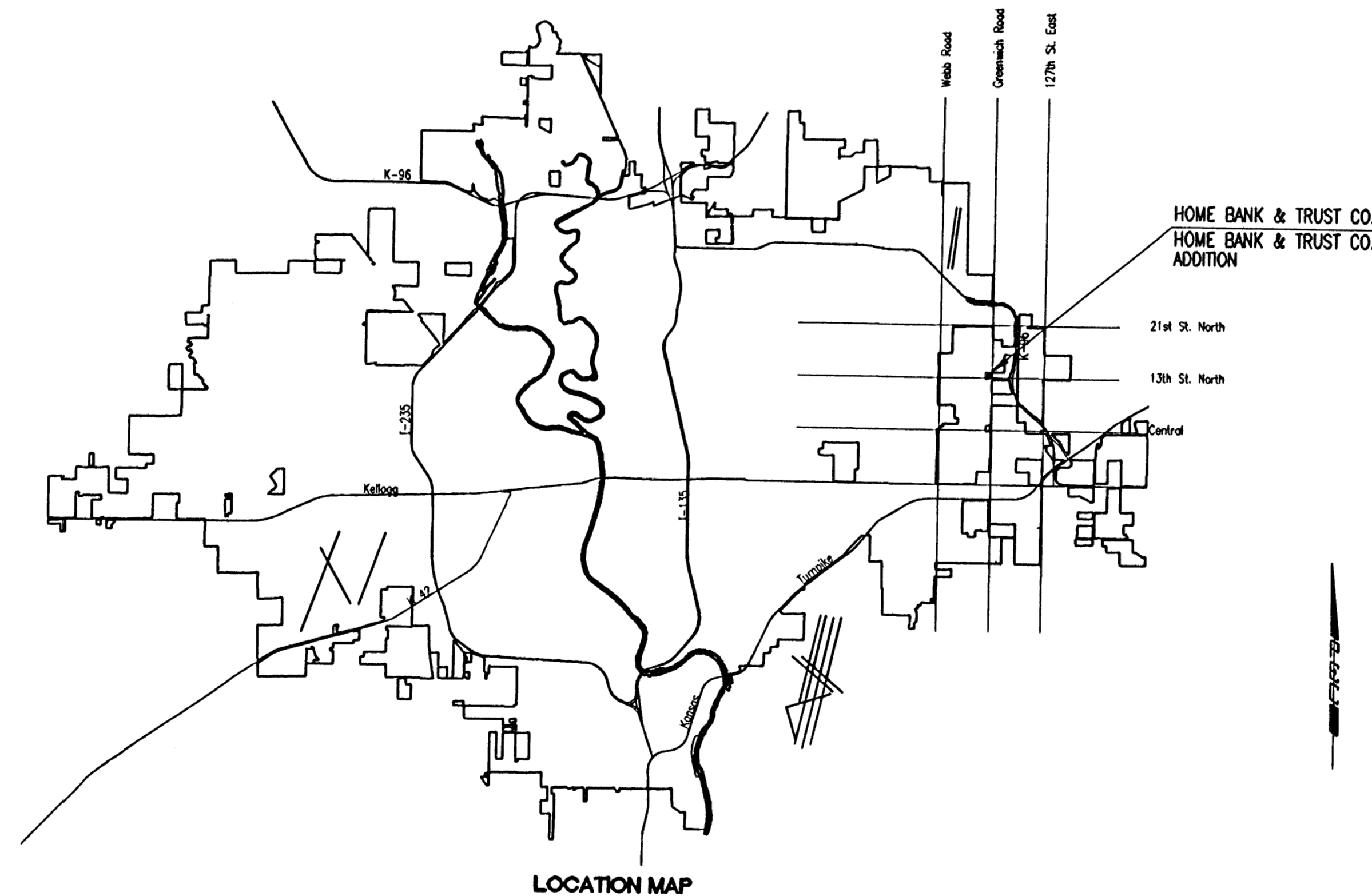
PRIVATE PROJECT NO. 1668 PPS (607861)
CITY OF WICHITA, KANSAS
 JAMES L. ARMOUR, P.E. - CITY ENGINEER



Wilson Darrell Mann P.A.
 105 N. Washington Wichita, Kansas 67202
 ph 316.262.4700 fx 316.262.0002
 www.wdmdesign.com

INDEX OF SHEETS

SHEET NO. C1.1	TITLE SHEET
SHEET NO. C1.2	KEY MAP AND GENERAL NOTES
SHEET NO. C1.3	PLAT
SHEET NO. C1.4	SWS LINE NO. 1 PLAN/PROFILE
SHEET NO. C1.5	STANDARD AREA INLET DETAILS
SHEET NO. C1.6-C1.9	SOIL EROSION BMP DETAILS



APPROVED AS NOTED
 By CITY ENGINEER OF WICHITA

Sanitary Sewers _____

Storm Sewers RJA 6-26-06

Driveway Approaches _____

Paving _____

NOTE TO CONTRACTOR

INSPECTION AND TESTING FOR THIS PROJECT IS TO BE PROVIDED BY A LICENSED CONSULTING ENGINEERING FIRM CONTRACTED BY THE OWNER/DEVELOPER. SAID INSPECTION TO BE IN ACCORDANCE WITH THE CITY OF WICHITA STANDARD CONSTRUCTION ENGINEERING PRACTICES AND CERTIFIED BY A LICENSED PROFESSIONAL ENGINEER. NO WORK SHALL BE PERFORMED IN DEDICATED EASEMENTS OR PUBLIC RIGHT-OF-WAY BY THE CONTRACTOR UNTIL SUCH INSPECTION IS ARRANGED FOR AND REQUIRED BONDS HAVE BEEN SUBMITTED TO AND APPROVED BY THE CITY. NOR SHALL ANY WORK BE COMMENCED IN DEDICATED EASEMENTS OR PUBLIC RIGHT-OF-WAY WITHOUT WRITTEN AUTHORIZATION BY THE CITY ENGINEER. IMPROVEMENTS PERFORMED UNDER THIS PROJECT SHALL NOT BE ACCEPTED BY THE CITY UNTIL ALL APPLICABLE DOCUMENTATION HAS BEEN SUBMITTED TO THE CITY ENGINEER. THIS MAY INCLUDE: RECORD DRAWINGS, INSPECTION LOGS, TEST DOCUMENTATION, TV TAPES, AND A CERTIFICATE OF COMPLETION. THE ABOVE SHALL BE PERFORMED BY THE CONSULTING FIRM CONTRACTED TO INSPECT THIS PROJECT.

**Home Bank & Trust Co.
 East Wichita Office**

1409 N. Greenwadi Road
 Wichita, Kansas

PRINTS ISSUED
 June 15, 2006 - For Pricing

WSH No. 04230
 drawn: SAW
 checked: RRT

PRIVATE STORM WATER
 SEWER IMPROVEMENTS TITLE SHEET

AS-BUILT
 10/20/06
 K. E. Miller
 5/5/07

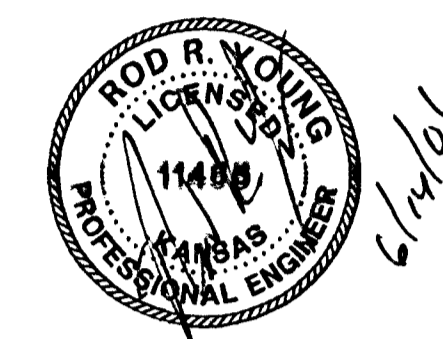
MAY 2006
 PLANS PREPARED BY
PROFESSIONAL ENGINEERING CONSULTANTS, P.A.
 ENGINEERS
 WICHITA, KANSAS



303 SOUTH TOPEKA
 WICHITA, KANSAS 67202
 316-262-2691
 FAX 316-262-3003
 www.pec1.com



PEC No. 06220/06312-1324 © copyright 2006 Wilson Darrell Mann P.A.



Wilson Darnell Mann P.A.
105 N. Washington Wichita, Kansas 67202
ph 316.262.4700 fx 316.262.0002
www.wdmdesign.com

**Home Bank & Trust Co.
East Wichita Office**

1409 N. Greenwich Road
Wichita, Kansas

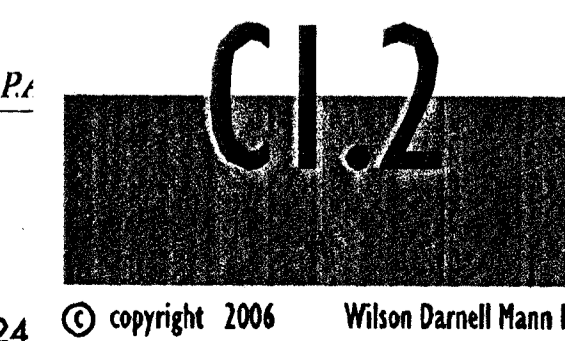
PRINTS ISSUED
June 15, 2006 - For Pricing

WDM No. 04230
drawn: SAW
checked: ART

SWS KEY MAP
AND GENERAL NOTES



303 SOUTH TOPEKA
WICHITA, KANSAS 67202
316-262-2691
FAX 316-262-3003
www.pec1.com
PEC No. 06220/06312-1324



© copyright 2006 Wilson Darnell Mann P.A.

GENERAL NOTES

EXISTING UTILITIES AND THEIR LOCATION, AS SHOWN ON THE PLANS, REPRESENT THE BEST INFORMATION OBTAINABLE FOR DESIGN. LOCATION INFORMATION HAS BEEN OBTAINED FROM THE VARIOUS UTILITY COMPANIES AND IS EITHER FROM COMPANY RECORD DRAWINGS OR COMPANY PROVIDED FIELD LOCATIONS. THE CONTRACTOR WILL BE REQUIRED TO WORK AROUND EXISTING UTILITIES WITHIN THE RIGHT-OF-WAY WHICH DO NOT CONFLICT WITH PROPOSED CONSTRUCTION. CONTRACTOR SHALL SATISFY HIMSELF OF SUBSURFACE CONDITIONS PRIOR TO BIDDING.

TREES AND SHRUBS IN PUBLIC RIGHT-OF-WAY WHICH ARE IN DIRECT CONFLICT WITH PROPOSED NEW CONSTRUCTION SHALL BE REMOVED BY THE CONTRACTOR WITH THE ENGINEER'S APPROVAL. TREES AND SHRUBS WHICH ARE NOT IN DIRECT CONFLICT WITH PROPOSED NEW CONSTRUCTION SHALL BE SAVED AND PROTECTED FROM DAMAGE.

RUBBLE FROM THE REMOVAL OF MISCELLANEOUS STRUCTURES SHALL BE DISPOSED OFF SITE BY THE CONTRACTOR.

ALL DISPOSAL SITES MUST BE APPROVED BY THE KANSAS DEPARTMENT OF HEALTH AND ENVIRONMENT. MATERIAL EITHER STOCKPILED OR DISPOSED OF IN A FLOOD PLAIN WOULD REQUIRE A KANSAS STATE BOARD OF AGRICULTURE PERMIT. ANY MATERIAL DUMPED IN WATERS OF THE UNITED STATES OR WETLANDS IS SUBJECT TO U.S. CORPS OF ENGINEERS PERMITTING REGULATIONS. ANY MATERIAL BURIED OR STOCKPILED BEYOND APPROVED CONSTRUCTION LIMITS WOULD REQUIRE ADDITIONAL ARCHEOLOGICAL INVESTIGATIONS UNLESS BURIED IN A PREVIOUSLY APPROVED BORROW LOCATION.

CONTRACTOR SHALL PROVIDE A MINIMUM SEVENTY-TWO (72) HOUR ADVANCE NOTICE (EXCLUDING WEEKENDS AND HOLIDAYS) PRIOR TO BEGINNING ANY EXCAVATION, TO KANSAS ONE-CALL SYSTEM, A UTILITY LOCATION SERVICE, AT (316) 687-2470 TO REQUEST THE FOLLOWING UTILITY COMPANIES TO LOCATE ALL EXISTING LINES WITHIN THE PROJECT AREA: K.G.S. GAS, WESTAR ENERGY, SBC, COX COMMUNICATIONS, CITY OF WICHITA SEWER MAINTENANCE AND CITY OF WICHITA WATER DEPARTMENT.

THE CONTRACTOR SHALL BE RESPONSIBLE FOR PRESERVING PROPERTY IRONS. THE CONTRACTOR WILL BE REQUIRED TO RE-ESTABLISH ANY PROPERTY IRONS WHICH ARE DAMAGED OR DESTROYED BY HIS CONSTRUCTION OPERATIONS. SUCH IRONS SHALL BE RE-ESTABLISHED BY A LICENSED LAND SURVEYOR IN ACCORDANCE WITH STATE LAWS.

ALL AREAS DISTURBED DURING CONSTRUCTION SHALL BE SEEDED, FERTILIZED, AND MULCHED ACCORDING TO CITY OF WICHITA STANDARDS AND SPECIFICATIONS.

ALL CONSTRUCTION MATERIALS AND PROCEDURES SHALL BE IN ACCORDANCE WITH THE CITY OF WICHITA STANDARDS AND SPECIFICATIONS FOR STORM SEWER CONSTRUCTION.

ALL LAWN/TURF AREAS DISTURBED BY CONSTRUCTION OF THE PROPOSED IMPROVEMENTS SHALL BE SEEDED PER THE SPECIFICATIONS AND RESTORED WITH THE SAME GRASS AS EXISTING. RESTORATION OF DISTURBED AREAS SHALL INCLUDE, BUT NOT BE LIMITED TO, TOP SOIL PREPARATION, SEEDING, MULCH, AND/OR RESEEDING. ALL SEEDING WORK SHALL BE IN ACCORDANCE WITH THE CITY OF WICHITA STANDARD SPECIFICATIONS AND THE CITY OF WICHITA ADMINISTRATIVE REGULATION NO. AR78 WHICH GOVERNS CLEANUP AND RESTORATION OR REPLACEMENT FOLLOWING CONSTRUCTION.

THE CONTRACTOR SHALL GIVE ALL PROPERTY OWNERS AND/OR TENANTS OF DEVELOPED PROPERTY ADJUTING THE CONSTRUCTION OF THIS PROJECT A MINIMUM OF TEN (10) DAYS ADVANCE NOTICE PRIOR TO START OF CONSTRUCTION.

THE WATER DEPARTMENT SHALL FIELD LOCATE WATER VALVES ONE TIME DURING CONSTRUCTION WHEN REQUESTED BY THE CONTRACTOR. IT SHALL BE THE CONTRACTOR'S RESPONSIBILITY TO PRESERVE SUCH FIELD LOCATIONS DURING THE CONSTRUCTION PROCESS. WATER VALVES, WATER VALVE BOXES OR FIRE HYDRANTS DAMAGED DURING CONSTRUCTION SHALL BE REPAIRED BY THE CONTRACTOR AT HIS OWN EXPENSE.

CUTS MADE IN PAVED SURFACES ON PUBLIC PROPERTY WILL BE REPAIRED BY THE CITY'S CONTRACTOR AND CHARGED AGAINST THE CONTRACTOR. UNIT REPAIR PRICES ARE AVAILABLE FROM THE CITY AT 268-4418. A SURCHARGE MAY BE APPLICABLE: CALL 268-4418 FOR DETAILS. REPAIR COSTS TO BE PAID PRIOR TO RELEASE OF WATER SERVICE IF WATER SERVICE IS AFFECTED.

EXCESS EXCAVATED MATERIAL AND EXCESS TOPSOIL SHALL BE STOCKPILED OR WASTED WITHIN THE PLAT LIMITS. THE CONTRACTOR SHALL CONTACT THE OWNER'S ENGINEER AT 262-2691 FOR INFORMATION PERTAINING TO THE ACCEPTABLE LOCATIONS FOR THE DISPOSITION OF EXCESS MATERIAL. WASTE MATERIAL SHALL BE GRADED SMOOTH AND SLOPED TO DRAIN.

ALL MANHOLE AND INLET TOPS SHALL BE ADJUSTED TO MATCH FLUSH WITH FINAL GRADES.

BENCH MARKS BM #A

BM #A - SET RAILROAD SPIKE IN SOUTH FACE POWER POLE ON THE WEST SIDE OF FIRST CONCRETE ENTRANCE, WEST OF GREENWICH ROAD.
ELEV.=1388.36 MSL DATUM
(200.96 C.O.W. DATUM)

BM #B - SET CHISELED "d" ON THE NORTH TOP OF CURB OF 13TH STREET NORTH ON THE WEST SIDE OF SECOND CONCRETE ENTRANCE, WEST OF GREENWICH ROAD.
ELEV.=1393.03 MSL DATUM
(205.63 C.O.W. DATUM)

CONTROL POINTS

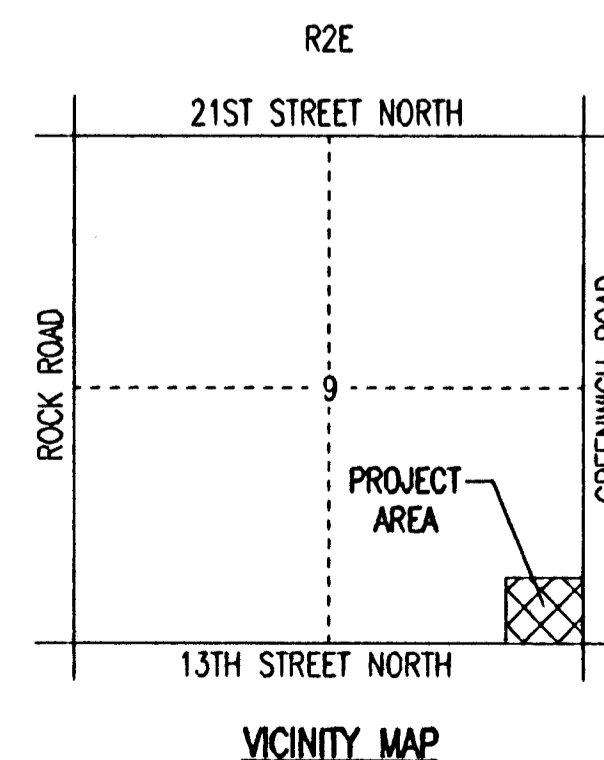
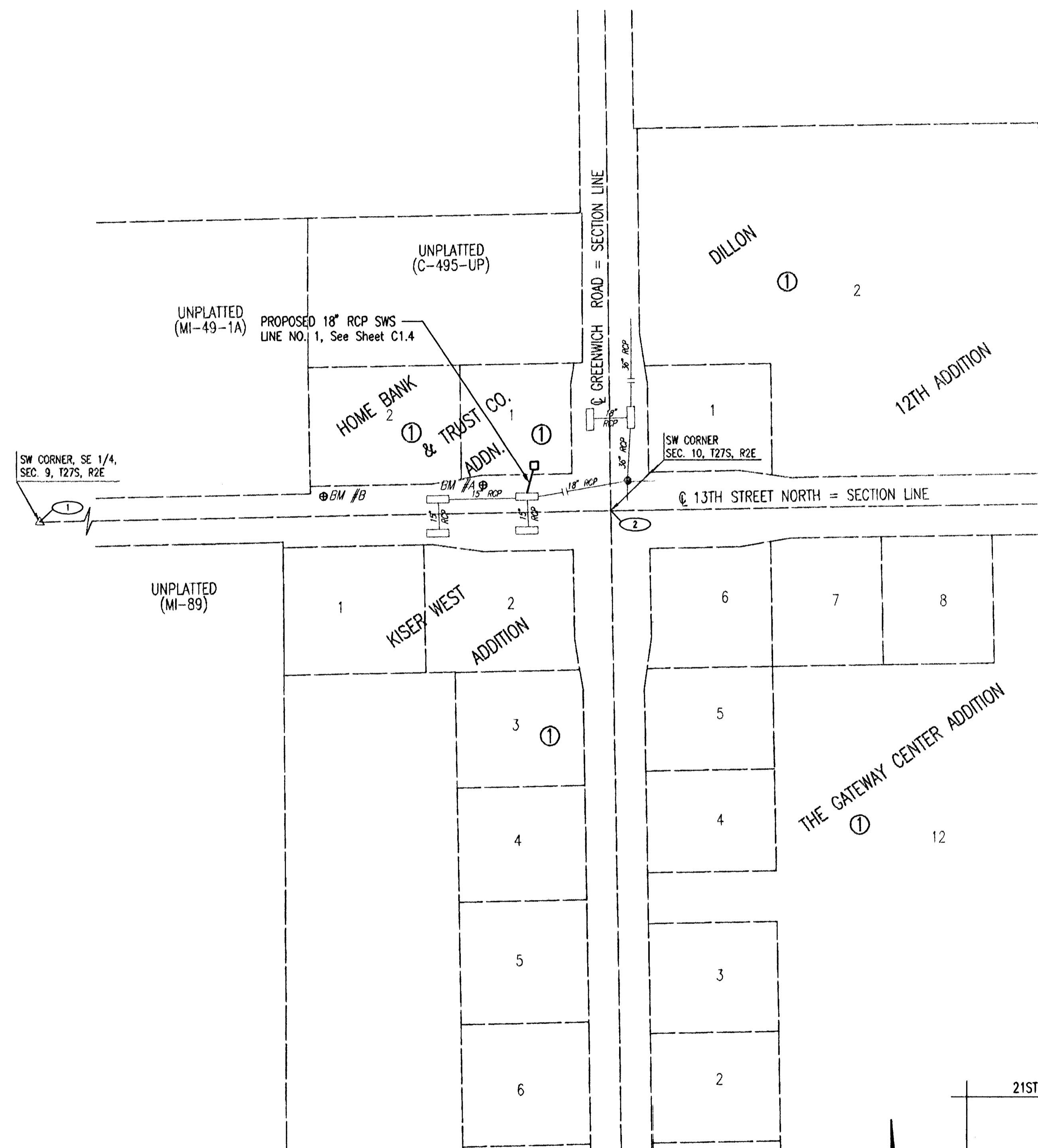
Point No. 1
N=381,952.9735, E=2,372,831.3385
37th St. N., Sta. 100+00.00
Southwest Corner of Southeast Quarter of Section 9,
Township 27 South, Range 2 East of the 6th P.M.

Point No. 2
N=391,978.4040, E=2,374,151.2680
37th St. N., Sta. 152+86.24 = # Greenwich Rd., Sta. 50+00.00
Southeast Corner of Section 9,
Township 27 South, Range 2 East of the 6th P.M.



LEGEND

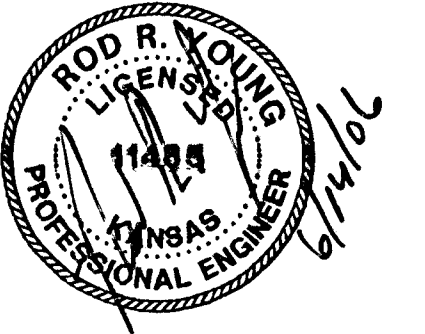
- EXISTING STORM SEWER
- PROPOSED STORM SEWER
- EXISTING STORM SEWER w/MANHOLE
- PROPOSED STORM SEWER AREA INLET
- EXISTING STORM SEWER CURB INLET



Sheet 06-14-0006 3:26:00 PM by GSW
Sheet 06-14-0006 3:26:00 PM by GSW
C:\2006\06312\PSWS\06312-C-38831.MXD

HOME BANK & TRUST COMPANY ADDITION

AN ADDITION TO WICHITA, SEDGWICK COUNTY, KANSAS



Wilson Darnell Mann P.A.
105 N. Washington Wichita, Kansas 67202
ph 316.262.4700 fx 316.262.0002
www.wdmdesign.com

Home Bank & Trust Co.
East Wichita Office

1409 N. Greenwich Road
Wichita, Kansas

PRINTS ISSUED
June 15, 2006 - For Pricing

WDM No. 04230
drawn: SAW
checked: RRY

PLAT

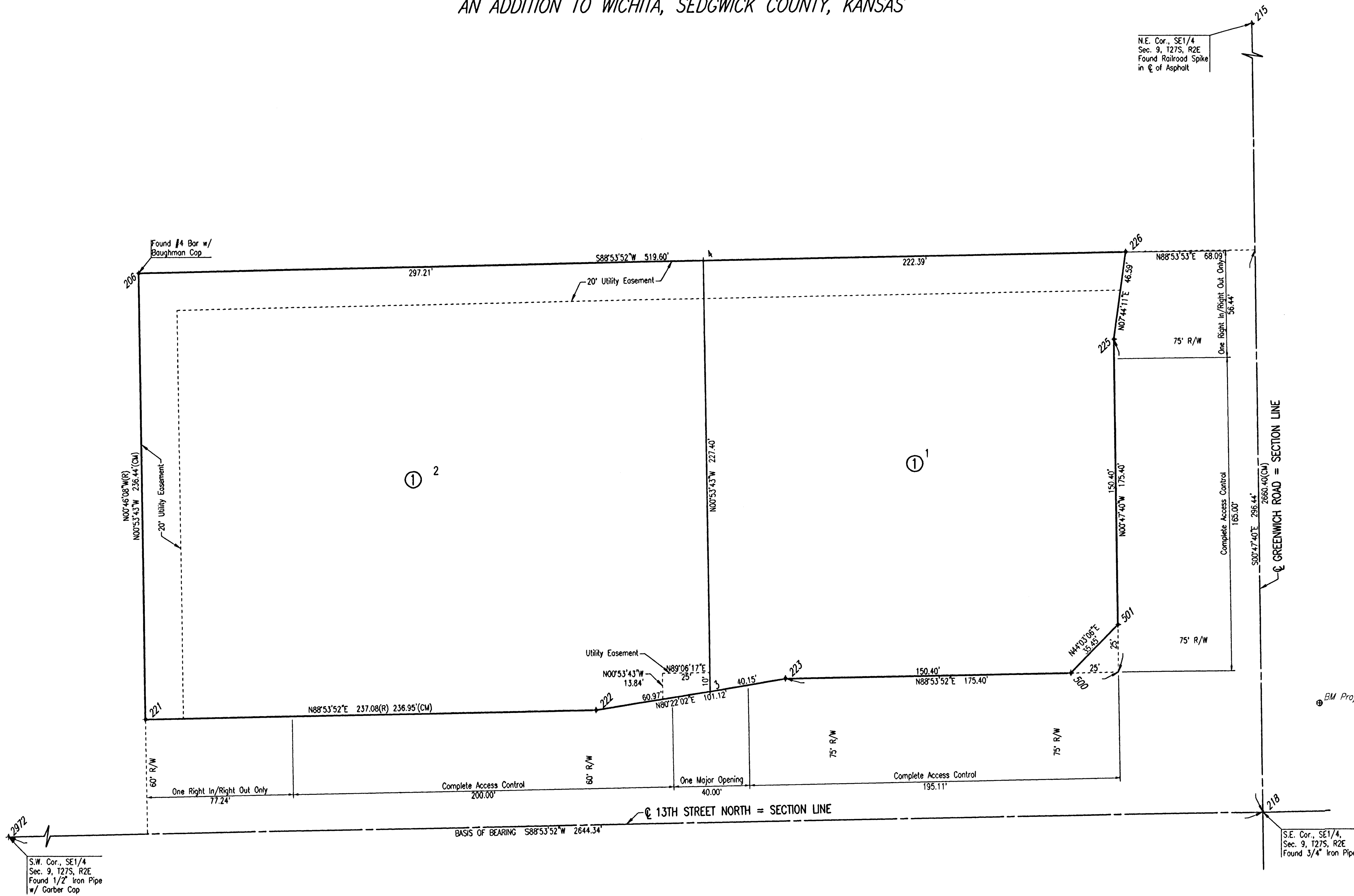


303 SOUTH TOPEKA
WICHITA, KANSAS 67202
316-262-2691
FAX 316-262-3003
www.pec1.com

PEC No. 06220/06312-1324

CL3

© copyright 2006 Wilson Darnell Mann P.A.



PROJECT BENCHMARK:
CHISELED "D" WEST CURB ISLAND AT THE NORTHEAST CORNER OF
GREENWICH ROAD AND 13TH STREET NORTH
ELEVATION = 1386.15 N.G.V.D.
= 198.75 CITY DATUM

LEGEND

- 1/2" REBAR W/PEC CAP UNLESS OTHERWISE NOTED
- R RECORD BEARING AND DISTANCE
- CM CALCULATED FROM MEASUREMENT
- ⊕ BM Bench Mark/Vertical Control Point

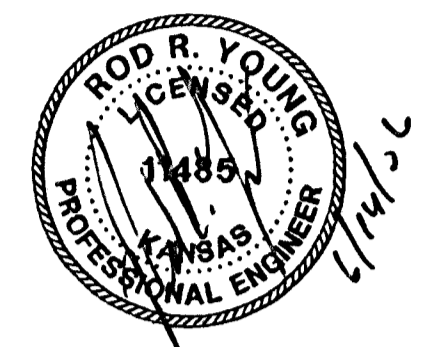
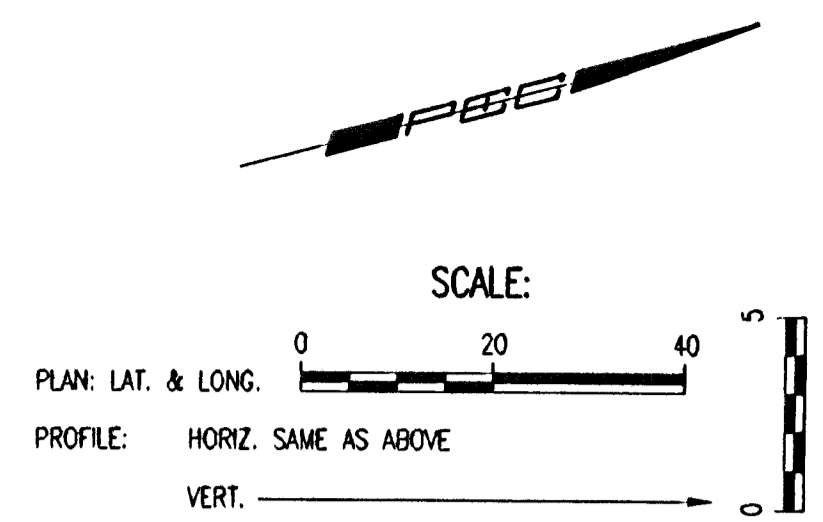
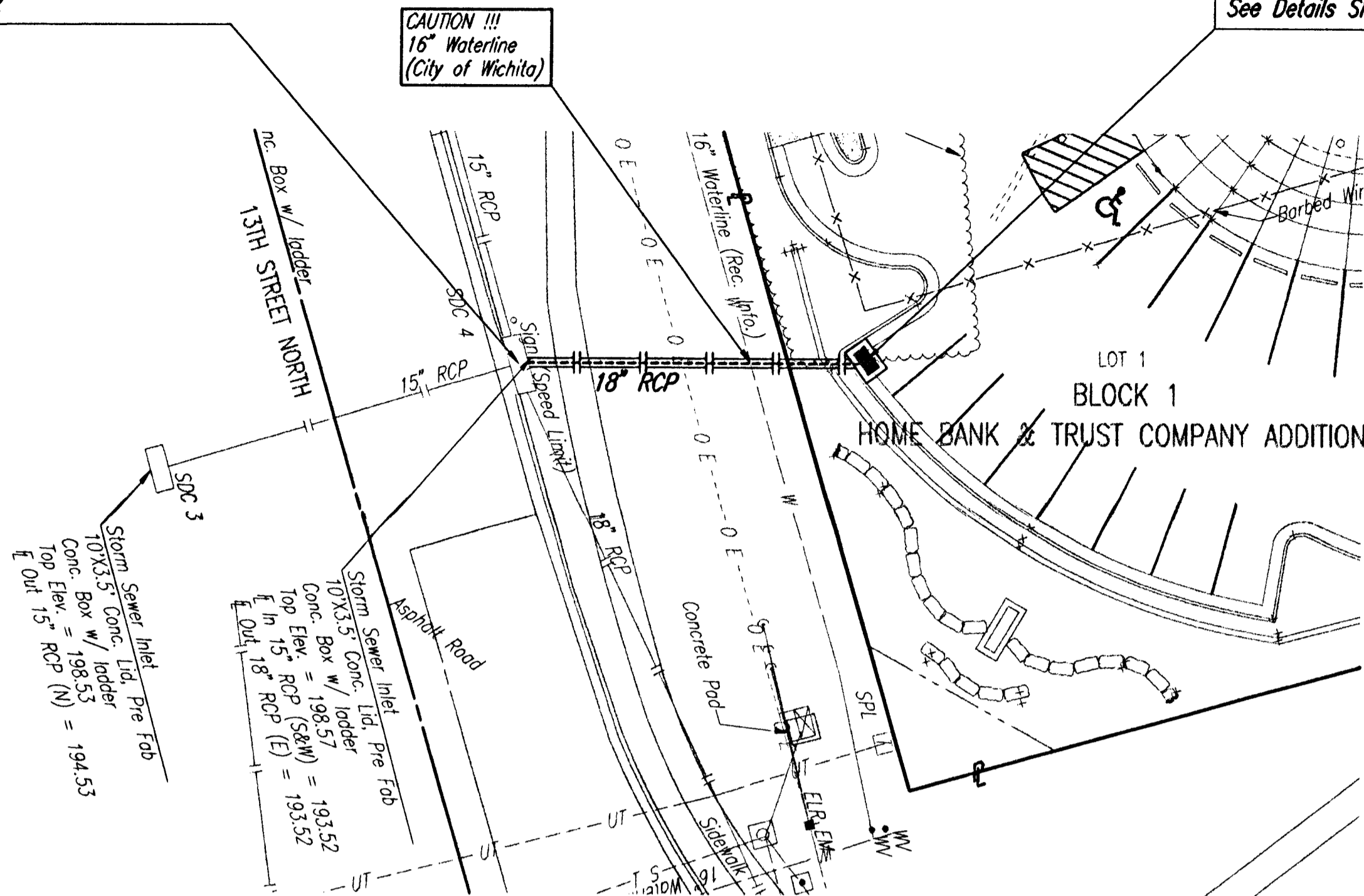
POINT	NORTH	EAST
3	382,041.8619	2,373,862.2839
4	382,269.2319	2,373,858.7308
206	382,263.5154	2,373,561.5754
215	384,638.6880	2,374,116.3770
218	381,978.4040	2,374,153.2660
221	382,027.1025	2,373,565.2698
222	382,031.6600	2,373,802.1757
223	382,048.5807	2,373,901.8699
225	382,227.3375	2,374,074.8055
226	382,273.5093	2,374,081.0780
500	382,051.4735	2,374,052.2421
501	382,076.9519	2,374,076.8908
2972	381,927.5430	2,371,509.4110

x = COORDINATE POINT NO.

Saved: 06-14-2006 3:28:44 PM by: SAW
Plot Scale: 1"=30'-0" (1:360) 11:06:09 AM
C:\2006\06312\PSW\06312-C-Plat

N-382,007.2805, E-2,373,991.3704
 Sta. 0+00.0, SWS Line No. 1
 Existing Curb Inlet*
 Top Elev.=198.57
 Install 57.6 L.F. 18" RCP
 E Out=193.52

N-382,063.1585, E-2,374,005.2719
 Sta. 0+57.6, SWS Line No. 1
 Const. Std. Area Inlet
 L=5'-0", W=3'-0"
 Top Elev.=199.35
 See Details Sh. No. C1.5



Wilson Darnell Mann P.A.
 105 N. Washington Wichita, Kansas 67202
 ph 316.262.4700 fx 316.262.0002
 www.wdmdesign.com

Home Bank & Trust Co.
 East Wichita Office
 1409 N. Greenwich Road
 Wichita, Kansas

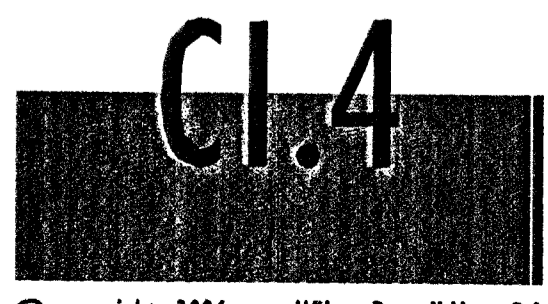
PRINTS ISSUED
 June 15, 2006 - For Pricing

WDN No. 04230
 draw: SAW
 check: RRY

SWS LINE NO. 1
 STA. 0+00.0 TO STA. 0+57.6



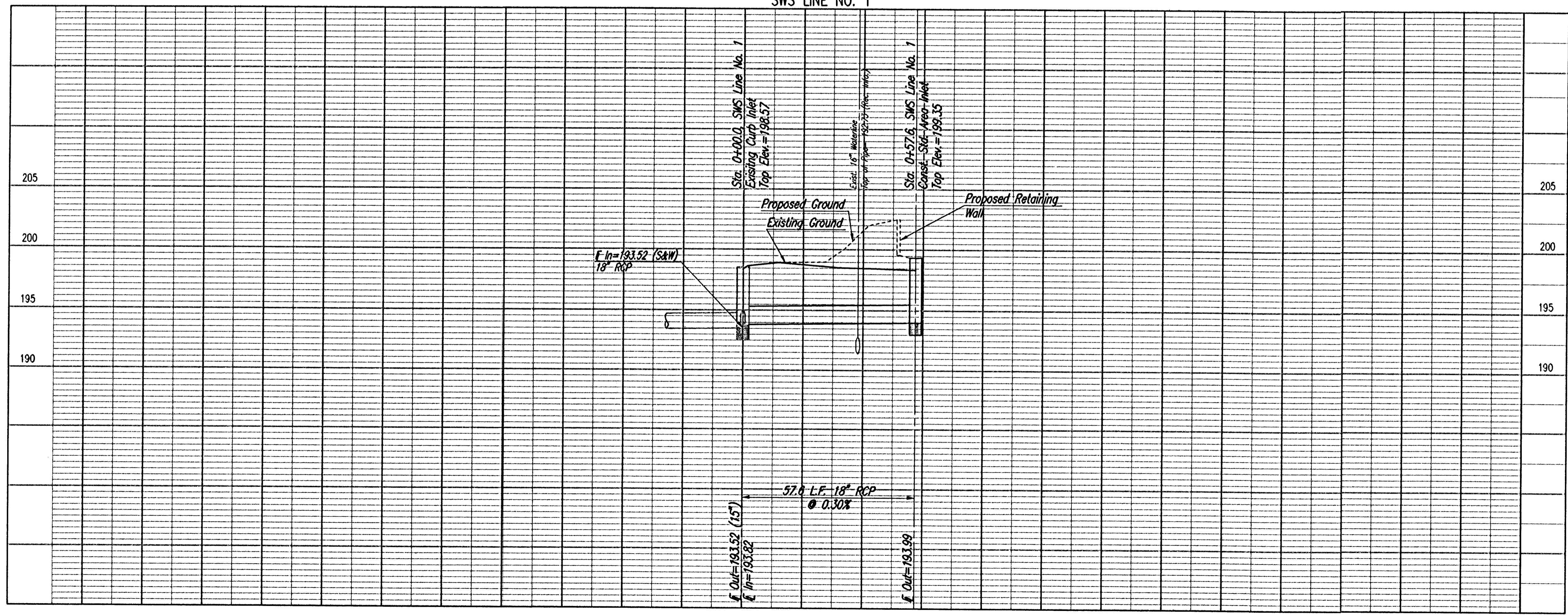
303 SOUTH TOPEKA
 WICHITA, KANSAS 67202
 316-262-2691
 FAX 316-262-3003
 www.pec1.com



PEC No. 06220/06312-1324 © copyright 2006 Wilson Darnell Mann P.A.

*CUT OPENING IN WALL OF EXISTING INLET AND REMOVE FLOOR SHAPING AS NECESSARY. INSTALL NEW PIPE, CUT FLUSH WITH INSIDE WALL OF MANHOLE, AND GROUT IN PLACE WITH NON-SHRINK GROUT. INSTALL NEW FLOOR SHAPING.

SWS LINE NO. 1



Sheet 05-14-2006 3:33:10 PM by SAW
 Plot Date: 6/15/06 12:27:02 PM
 C:\2006\06312\05\05\06312-C-0505.dwg by SAW