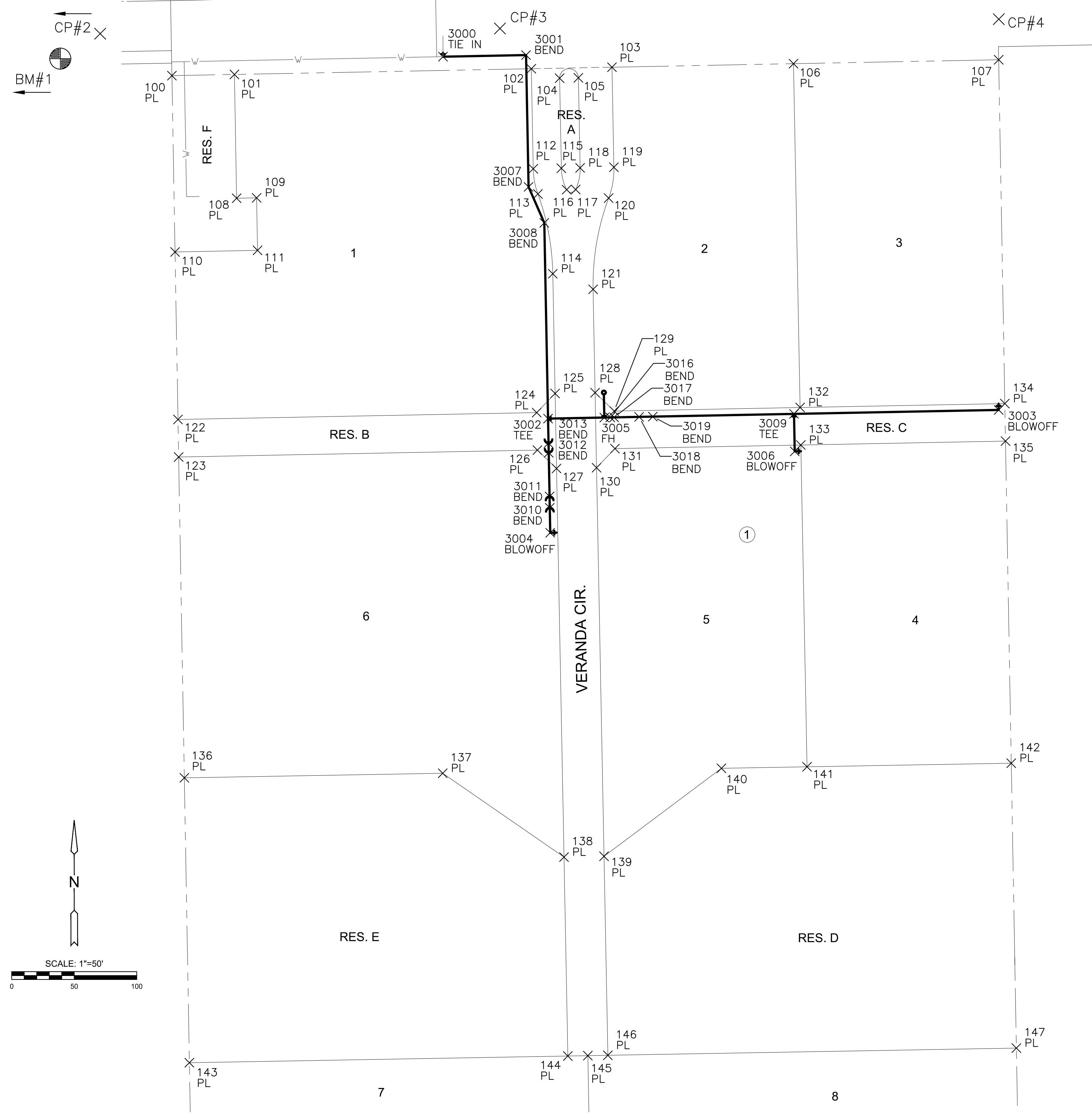


J:\PROJECTS\2017\1010370_VERANDA_ADD_17270_CAD\SHOTS\505_CIVIL\WTR\2ND ADDITION\17270_2ND BUBBLE MAP.DWG
 PLOTTED: Monday, February 06, 2023 @ 09:50AM



PLAT POINTS			
Point #	Northing	Easting	Desc.
100	1694367.70	1683650.31	PL
101	1694368.66	1683700.30	PL
102	1694373.23	1683937.68	PL
103	1694374.48	1684002.17	PL
104	1694365.67	1683960.33	PL
105	1694365.96	1683975.32	PL
106	1694377.27	1684147.32	PL
107	1694380.43	1684311.36	PL
108	1694269.68	1683702.06	PL
109	1694269.99	1683718.05	PL
110	1694226.72	1683652.81	PL
111	1694227.99	1683718.80	PL
112	1694293.23	1683939.22	PL
113	1694273.09	1683942.97	PL
114	1694209.27	1683954.84	PL
115	1694293.66	1683961.71	PL
116	1694276.54	1683965.93	PL
117	1694276.68	1683973.15	PL
118	1694293.95	1683976.71	PL
119	1694294.47	1684003.71	PL
120	1694269.79	1683999.50	PL
121	1694196.86	1683987.08	PL
122	1694092.74	1683655.18	PL
123	1694062.75	1683655.71	PL
124	1694098.27	1683941.97	PL
125	1694113.55	1683956.68	PL
126	1694068.27	1683942.55	PL
127	1694053.56	1683957.84	PL
128	1694114.17	1683988.67	PL
129	1694099.46	1684003.96	PL
130	1694054.18	1683989.83	PL
131	1694069.46	1684004.54	PL
132	1694102.32	1684152.61	PL
133	1694072.33	1684153.19	PL
134	1694105.47	1684316.29	PL
135	1694075.48	1684316.82	PL
136	1693806.18	1683660.25	PL
137	1693809.84	1683866.83	PL
138	1693742.79	1683963.82	PL
139	1693743.40	1683995.81	PL
140	1693813.78	1684089.67	PL
141	1693814.99	1684158.15	PL
142	1693817.88	1684321.44	PL
143	1693578.35	1683664.28	PL
144	1693583.70	1683966.88	PL
145	1693583.99	1683982.88	PL
146	1693584.27	1683998.88	PL
147	1693590.05	1684325.51	PL
148	1693101.62	1683672.71	PL
149	1693107.57	1683991.71	PL
150	1693113.96	1684334.04	PL

WATER POINTS			
Point #	Northing	Easting	Desc.
3000	1694382.88	1683867.09	TIE IN
3001	1694384.15	1683933.47	BEND
3002	1694093.44	1683951.07	TEE
3003	1694100.38	1684311.38	BLOWOFF
3004	1694002.15	1683952.82	BLOWOFF
3005	1694094.31	1683996.06	FH
3006	1694067.23	1684148.29	BLOWOFF
3007	1694278.73	1683935.50	BEND
3008	1694250.00	1683948.05	BEND
3009	1694097.23	1684147.71	TEE
3010	1694022.14	1683952.44	BEND
3011	1694031.18	1683952.26	BEND
3012	1694066.17	1683951.59	BEND
3013	1694073.74	1683951.45	BEND
3016	1694094.40	1684000.81	BEND
3017	1694094.46	1684003.90	BEND
3018	1694094.84	1684023.89	BEND
3019	1694095.05	1684034.83	BEND



CONTROL POINTS

CONTROL POINTS:
 CP 2
 "+" CUT IN FRONT CENTER CURB INLET WITH MAGNAIL IN CENTER OF "+" CUT
 N=1694401.257, E=1683542.233
 EL: 1378.300

 CP 3
 MAGNAIL & WASHER SE CORNER CURB INLET
 N=1694405.429, E=1683912.609
 EL: 1383.390

 CP 4
 MAGNAIL & WASHER SE CORNER CURB INLET
 N=1694412.863, E=1684311.498
 EL: 1390.300

DATUM:
 THE HORIZONTAL DATUM IS BASED ON THE KANSAS COORDINATE SYSTEM OF 1983, NAD83(2011), EPOCH:2010.0000, SOUTH ZONE. COORDINATES SHOWN HAVE BEEN MODIFIED TO THE GROUND USING A COMBINED ADJUSTMENT FACTOR OF 1.0001200144. STATE PLANE COORDINATES CAN BE CALCULATED BY MULTIPLYING THE SHOWN VALUES BY 0.99988.

ALL ELEVATIONS SHOWN ARE BASED ON THE NAVD 88 VERTICAL DATUM, GEOID18.

NOTE:
 ALL CONTROL POINTS SHOWN HAVE ELEVATIONS ESTABLISHED USING STANDARD SURVEYING PROCEDURES AND CAN BE USED AS TEMPORARY BENCHMARKS. WHEN USING A CONTROL POINT AS A TEMPORARY BENCHMARK, IT IS RECOMMENDED THAT CROSS-CHECKS BE MADE TO OTHER CONTROL POINTS OR BENCHMARKS TO CONFIRM ELEVATIONS PRIOR TO USE.

EVERY ATTEMPT HAS BEEN MADE TO INSURE ALL COORDINATE VALUES SHOWN ARE AN ACCURATE AND TRUE REPRESENTATION OF THE CURRENT PLANS. ALL VALUES ARE TO BE CONFIRMED WITH THE FINAL SIGNED PLAN SET BEFORE USE.



WATER DISTRIBUTION PLANS FOR **VERANDA SECOND ADDITION** PHASE 1

©2023
 MKEC Engineering
 All Rights Reserved
 www.mkec.com
 These drawings and their contents, including, but not limited to, all concepts, designs, & ideas are the exclusive property of MKEC Engineering (MKEC), and may not be used or reproduced in any way without the express consent of MKEC.

BUBBLE MAP

PROJECT NO.	448-2022-000360	
DATE	JAN. 2023	
SCALE	1" = 50'	
DESIGNED	DRAWN	CHECKED
MKB	JWC	SPE
NO.	REVISION	DATE