

# FINAL PLAT

## VERANDA SECOND ADDITION

### AN ADDITION TO WICHITA, SEDGWICK COUNTY, KANSAS

a replat of Veranda Addition, an addition to Wichita, Sedgwick County, Kansas

NW cor., NE 1/4, Sec. 16, T27S, R2E, 6th P.M. Fnd. 3/4" Rebar w/ Cagiber id cap

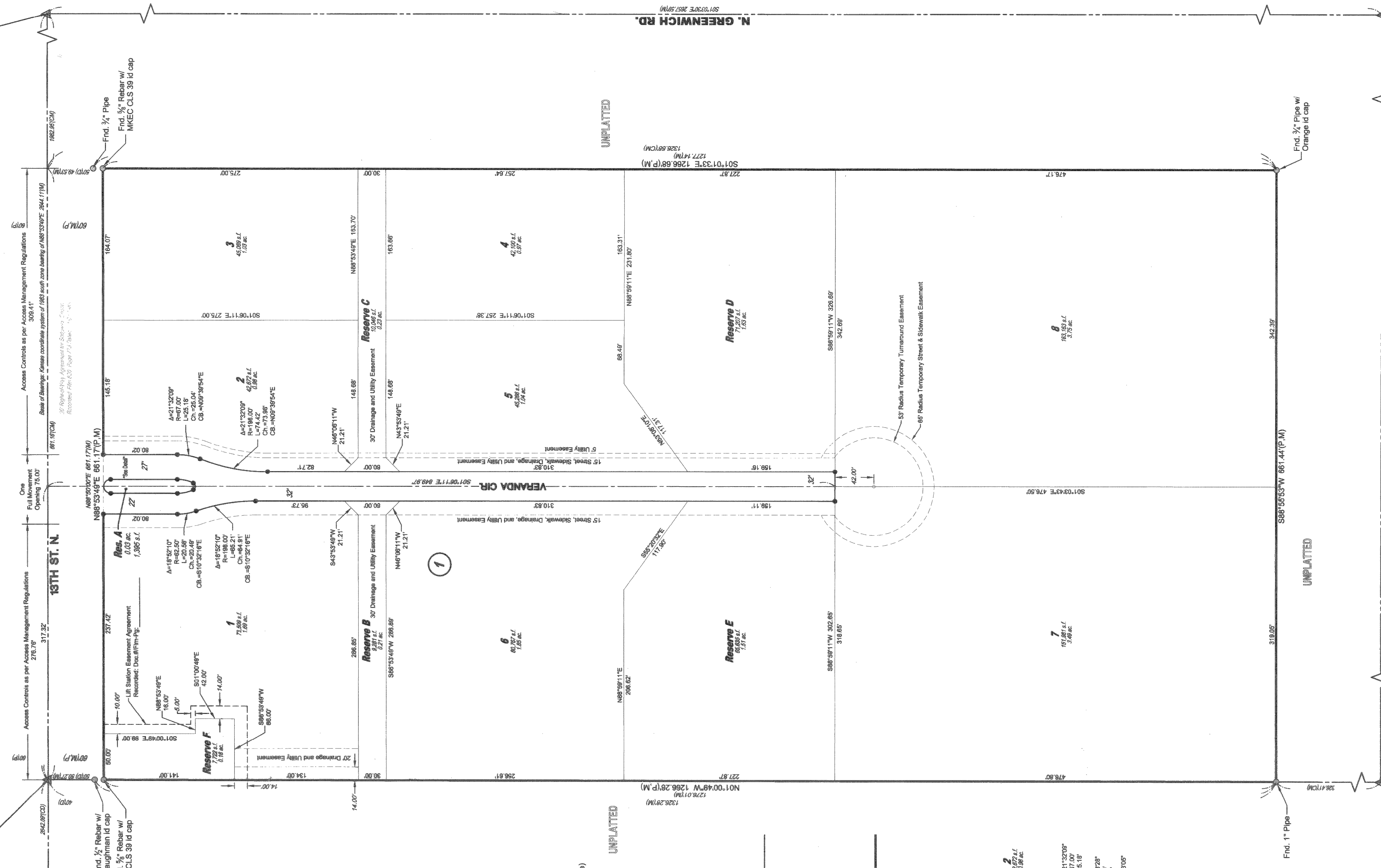
#### VICINITY MAP

NW cor., NW 1/4, Sec. 16, T27S, R2E, 6th P.M. Fnd. 3/4" Rebar w/ MKEC CLS 39 id cap

NE cor., NE 1/4, Sec. 16, T27S, R2E, 6th P.M. Fnd. 3/4" Rebar w/ yellow id cap

SE cor., NE 1/4, Sec. 16, T27S, R2E, 6th P.M. Fnd. 3/4" Pipe in Thimble

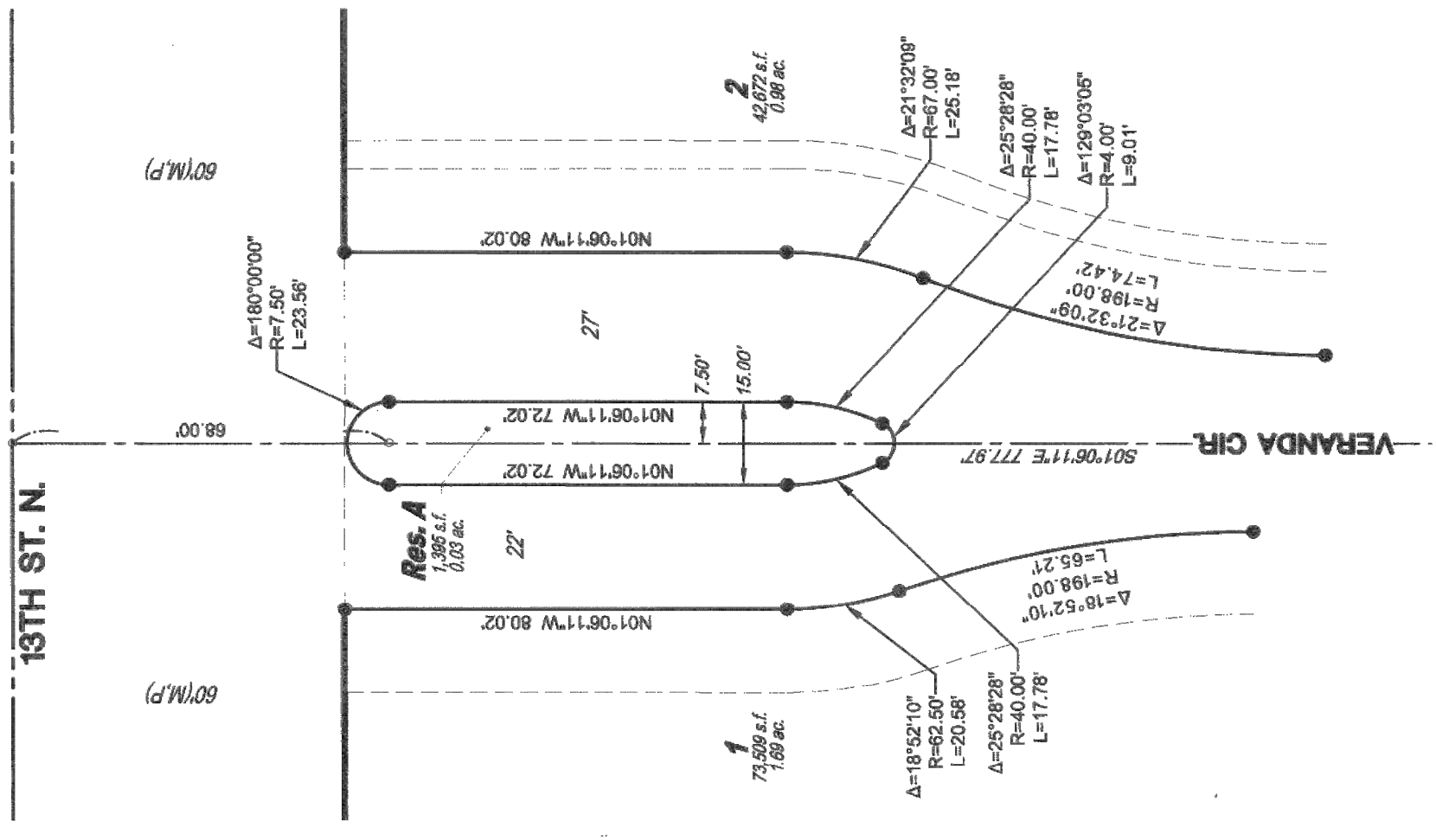
Center Sec. 16, T27S, R2E, 6th P.M. Fnd. Stone w/ "X" cut



Basis of Bearings: Kansas coordinate system of 1983 south zone bearing of N88°53'49"E on the north line of the Northeast Quarter, Section 16, Township 27 South, Range 2 East of the 6th Principal Meridian. This plat is surveyed and platted on NAD83 using Kansas state plane south zone coordinates, modified to the surface, having a combined adjustment scale factor of 1.000120014.

#### LEGEND

- Date of Survey: September 18, 2017
- △ - Section Corner Monument Found
- - Found monument (see annotation for type)
- - Set 3/4" rebar w/ MKEC CLS 39 id. cap (or see annotation for type)
- (M) - Measured
- (D) - Described
- (P) - Platted
- (CM) - Calculated from Measurement
- C.A.C. - Complete Access Control
- Lot
- ① - Block



#### RESERVE A DETAIL

1" = 30'

MINIMUM PAD ELEVATIONS LOWEST DRAININGS		
LOTS / Reserve	BLOCK ELEVATION	PAVING
4 - B	1	1387.1

**BENCHMARK**  
 Chiseled square on top of curb at north end of island in N. Veranda St.  
 460' north of centerline of 13th St. N.  
 ELEV = 1387.03 NAVD 88

