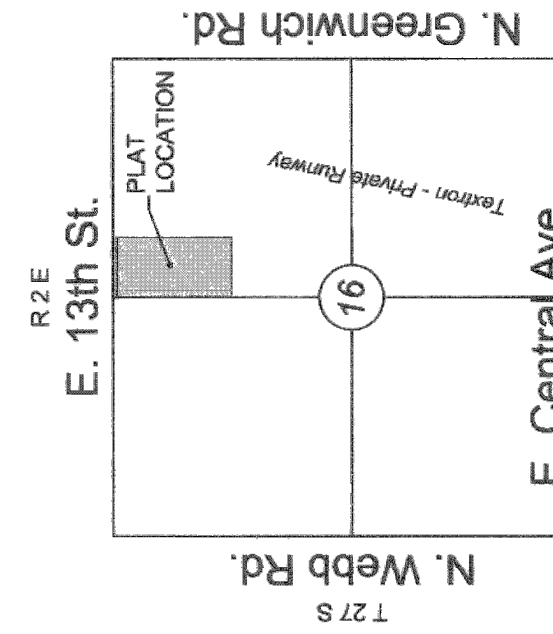


FINAL PLAT VERANDA SECOND ADDITION AN ADDITION TO WICHITA, SEDGWICK COUNTY, KANSAS

a replat of Veranda Addition, an addition to Wichita, Sedgwick County, Kansas



VICINITY MAP

NW cor., NE 1/4, Sec. 16, T27S, R2E, 6th P.M. Fnd. 3/4" Rebar w/ Cagiber id cap

NW cor., NE 1/4, Sec. 16, T27S, R2E, 6th P.M. Fnd. 3/4" Rebar w/ Cagiber id cap

NW cor., NE 1/4, Sec. 16, T27S, R2E, 6th P.M. Fnd. 3/4" Rebar w/ yellow id cap

SE cor., NE 1/4, Sec. 16, T27S, R2E, 6th P.M. Fnd. 3/4" Pipe in Thimble

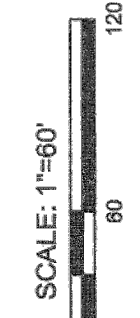
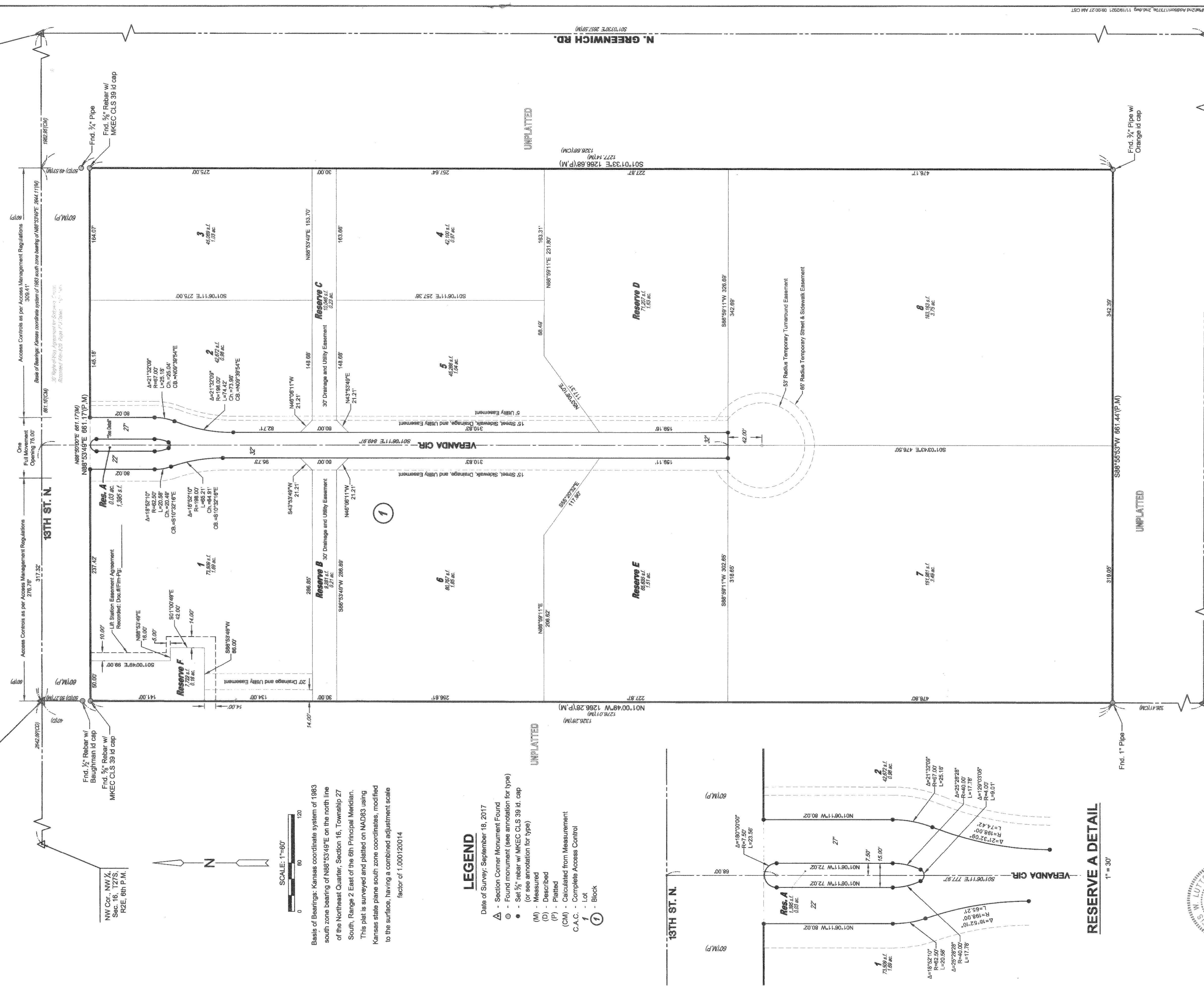
SE cor., NE 1/4, Sec. 16, T27S, R2E, 6th P.M. Fnd. 3/4" Pipe in Thimble

SE cor., NE 1/4, Sec. 16, T27S, R2E, 6th P.M. Fnd. 3/4" Pipe in Thimble

SE cor., NE 1/4, Sec. 16, T27S, R2E, 6th P.M. Fnd. 3/4" Pipe in Thimble

SE cor., NE 1/4, Sec. 16, T27S, R2E, 6th P.M. Fnd. 3/4" Pipe in Thimble

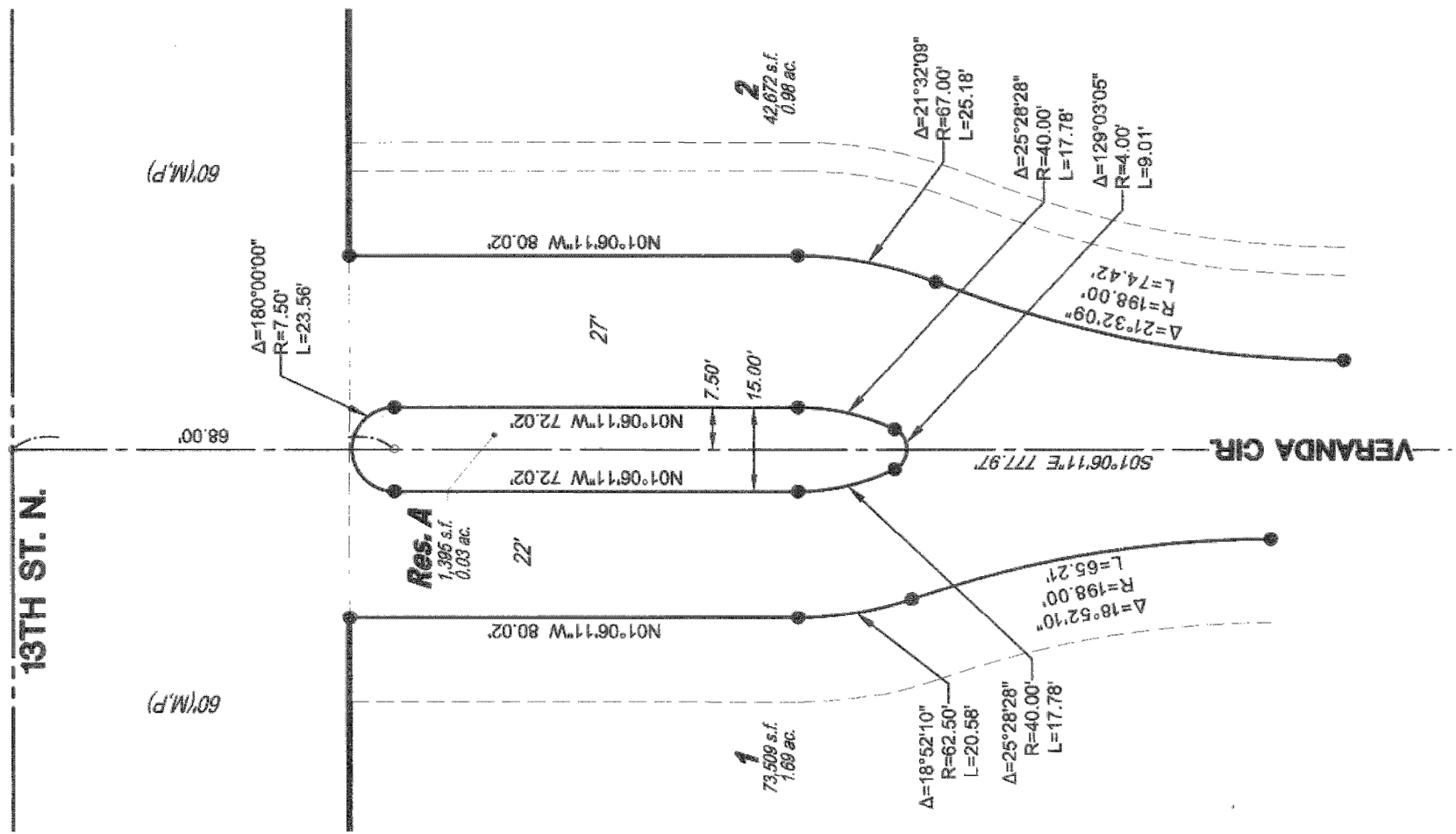
SE cor., NE 1/4, Sec. 16, T27S, R2E, 6th P.M. Fnd. 3/4" Pipe in Thimble



Basis of Bearings: Kansas coordinate system of 1983 south zone bearing of N88°53'49"E on the north line of the Northeast Quarter, Section 16, Township 27 South, Range 2 East of the 6th Principal Meridian. This plat is surveyed and platted on NAD83 using Kansas state plane south zone coordinates, modified to the surface, having a combined adjustment scale factor of 1.000120014.

LEGEND

- Date of Survey: September 18, 2017
- Section Corner Monument Found
- Found monument (see annotation for type)
- Set 3/4" rebar w/ MKEC CLS 39 id cap (or see annotation for type)
- Measured (M)
- Described (D)
- Platted (P)
- Calculated from Measurement (CM)
- Complete Access Control C.A.C.
- Lot
- Block



RESERVE A DETAIL

| MINIMUM PAD ELEVATIONS LOWEST OPENINGS | | |
|--|-----------------|--------|
| LOTS / Reserve | BLOCK ELEVATION | PAVING |
| 4 - B | 1 | 1387.1 |

BENCHMARK
Chiseled square on top of curb at north end of island in N. Veranda St.
460' north of centerline of 13th St. N.
ELEV = 1387.03 NAVD 88

Center Sec. 16, T27S, R2E, 6th P.M. Fnd. Stone w/ "X" cut

