

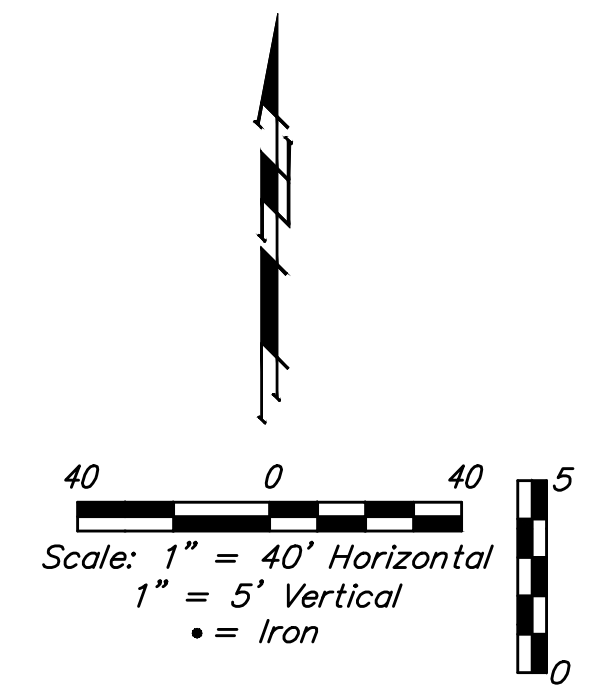
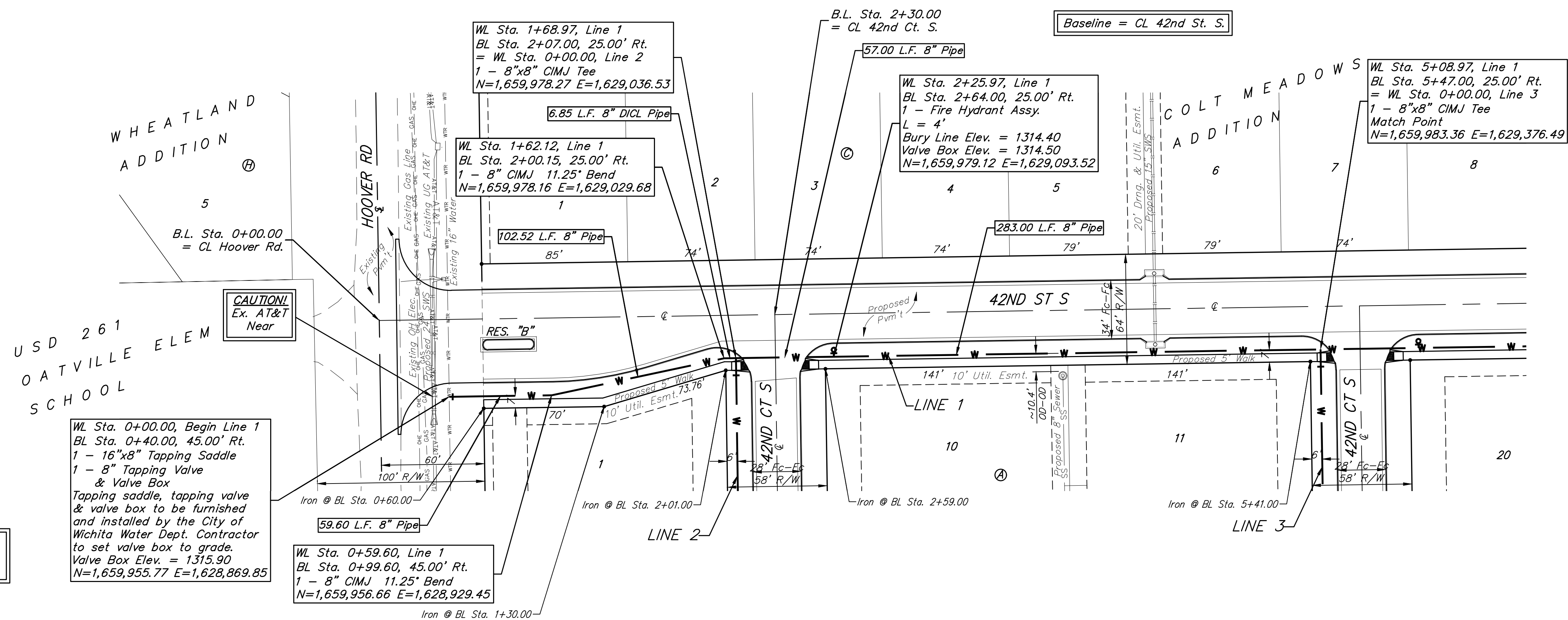
BENCHMARKS:
 BM #1: TOP OF 1 1/2" ALUMINUM MKEC DISC SOUTH SIDE OF FIELD ENTRANCE, 35' WEST OF HOOVER ROAD, 17' NNE OF POWER POLE, 28' SOUTH AND 35' WEST OF NE CORNER, SE1/4, SEC. 15, T28S, R1W. ELEV. = 1313.55 NAVD88

BM #2: CROSS CUT TOP OF CURB NORTH SIDE OF NORTH CIRCLE DRIVE TO OATVILLE ELEMENTARY, 3' WEST OF FIRE HYDRANT, 7' EAST OF FENCE CORNER, 373' NORTH AND 48' WEST OF NE CORNER, SE1/4, SEC. 15, T28S, R1W. ELEV. = 1315.78 NAVD88

Trees in conflict with water line construction to be removed by contractor. To be paid for as lump sum bid item "Site Clearing"

All other trees shall remain and be protected from damage during construction. Overhanging limbs shall be trimmed by the Contractor using a chain saw only as necessary for construction and with approval of the Engineer. Cost of tree trimming to be included in bid item "Site Clearing"

Contact utility companies 3 weeks prior to construction to coordinate construction. Shannon Brinkmeyer, AT&T (316) 268-2931



Pipe layout is shown with horizontal and vertical deflections. Contractor to use short pipe lengths, high deflection couplers, and manufacturer recommended pipe deflections to meet planned alignment.

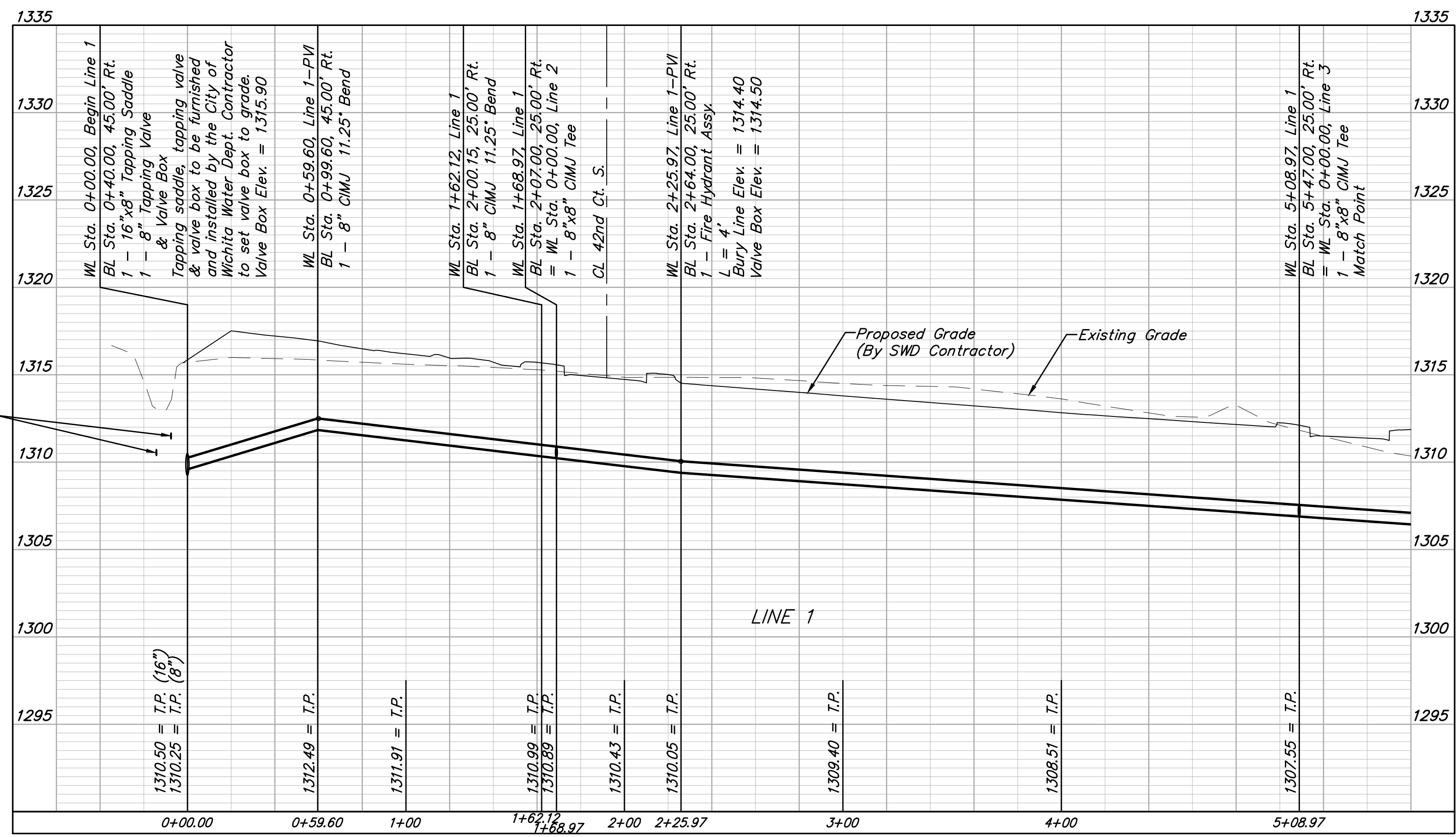
WL Sta. 0+00.00, Begin Line 1
 BL Sta. 0+40.00, 45.00' Rt.
 1 - 16"x8" Tapping Saddle
 1 - 8" Tapping Valve & Valve Box
 Tapping saddle, tapping valve & valve box to be furnished and installed by the City of Wichita Water Dept. Contractor to set valve box to grade. Valve Box Elev. = 1315.90
 N=1,659,955.77 E=1,628,869.85

WL Sta. 1+68.97, Line 1
 BL Sta. 2+07.00, 25.00' Rt.
 = WL Sta. 0+00.00, Line 2
 1 - 8"x8" CIMJ Tee
 N=1,659,978.27 E=1,629,036.53

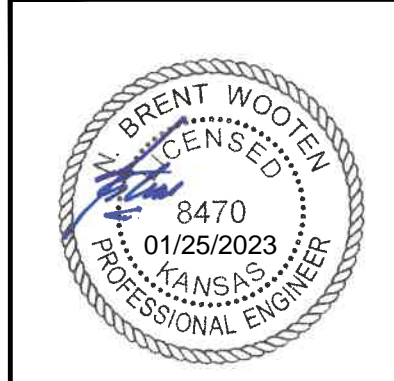
WL Sta. 1+62.12, Line 1
 BL Sta. 2+00.15, 25.00' Rt.
 1 - 8" CIMJ 11.25° Bend
 N=1,659,978.16 E=1,629,029.68

WL Sta. 2+25.97, Line 1
 BL Sta. 2+64.00, 25.00' Rt.
 1 - Fire Hydrant Assy.
 L = 4'
 Bury Line Elev. = 1314.40
 Valve Box Elev. = 1314.50
 N=1,659,979.12 E=1,629,093.52

WL Sta. 5+08.97, Line 1
 BL Sta. 5+47.00, 25.00' Rt.
 = WL Sta. 0+00.00, Line 3
 1 - 8"x8" CIMJ Tee
 Match Point
 N=1,659,983.36 E=1,629,376.49



DEPTH UNKNOWN
 Contractor to Verify Depth & Location of Existing Water Line Prior to Construction.



BAUGHMAN COMPANY
 315 Ellis St.
 Wichita, KS 67211
 316-262-7271
 BaughmanCo.com

COLT MEADOWS ADD.
 Phase 1
LINE 1
 WATER DISTRIBUTION SYSTEM
 PROJECT NUMBER:
 22-04-E165
 DESIGN: NBW DRAWN: TMS
 DATE: January 25, 2023
 SHEET 2 OF 16