

GENERAL NOTES:

- The Contractor shall comply with all applicable safety regulations. All construction shall be completed following current City Standard Specifications and Special Provisions.
- Contractor will be required to provide notice to utility companies a minimum of seventy-two (72) hours prior to any excavation, as follows:
Kansas One-Call 687-2470
The Contractor must notify the following in case of an emergency:
AT&T 1-800-246-8464
Black Hills Energy 1-800-694-8989
City of Wichita Water & Sewer 1-316-219-8921
City of Wichita Stormwater 1-316-268-4090
City of Wichita Traffic 1-316-268-4034
Cox Communications 1-888-249-3530
Kansas Gas Service 1-888-482-4950
Evergy 1-800-544-4857
- Utility service lines, poles, etc. are to be adjusted as necessary by others prior to construction unless the plans specifically call for their adjustment by the Contractor or unless the plans specifically identify a utility to be adjusted by its owner during construction. Existing utilities and their location, as shown on the plans, represent the best information obtainable for design. The Contractor will be required to work around existing utilities within the right-of-way which do not conflict with proposed construction.
- Rubble from the removal of miscellaneous structures and excess excavation which is to be wasted shall be disposed of on sites to be provided by the Contractor. These sites shall be approved by the Engineer as to suitability, appearance and site location. Locations, in the opinion of the Engineer, that will leave an unsightly appearance will not be approved. All disposal sites must be approved by the Kansas Department of Health and Environment. Material either stockpiled or disposed of in a flood plain will require a Kansas State Board of Agriculture permit. Any material dumped in waters of the United States or wetlands is subject to U.S. Corps of Engineers permitting regulations. Any material buried or stockpiled beyond approved construction limits will require additional archaeological investigations unless buried in a previously approved borrow location.
- Trees and shrubs in public right-of-way which are in direct conflict with proposed new construction shall be removed by the Contractor with the City Engineer's approval. Trees and shrubs which are not in direct conflict with proposed new construction shall be saved and protected from damage.
- The Contractor shall give all property owners and/or tenants of developed property abutting the construction of this project a minimum of ten (10) days notice prior to start of construction.
- The Contractor shall be responsible for preserving property irons. The Contractor will be required to re-establish any property irons which are damaged or destroyed by his construction operations. Such irons shall be re-established by a licensed land surveyor in accordance with state laws.
- All elevations shown are NAVD88.
- Contractor shall limit the extent of trench openings overnight and weekends to less than 50 feet.
- The Contractor shall protect from damage and support existing utilities through construction as approved by the utility owner and the Engineer at the contractor's expense.
- All existing and proposed erosion control measures including silt fencing, erosion control mat, straw bales, inlet barriers, and const. entrance shall be maintained throughout construction by the contractor and until project is accepted by the City of Wichita. The on-site engineer shall complete weekly reports on the status of erosion control measures. The contractor shall be required to comply with maintenance and/or replacement of erosion control measures as determined by the on-site engineer until project is accepted by City of Wichita. Maintenance and/or replacement of erosion control measures to be paid by L.S. bid item "Maintain Existing BMPs".

- All excess excavation shall remain on-site and shall be stockpiled or spread at a location determined by the engineer.
- All of Hoover Rd. R/W disturbed during construction and disturbed areas around proposed ponds above the water surface shall be seeded and mulched as follows:
Seed -- Kansas Premium Fescue Blend; 8 lbs. PLS/1000 Sq. Ft.
Annual Rye grass; 3 lbs./1000 Sq. Ft.
Fertilizer -- 12-24-12 Ratio; 45 Lbs./Ac.
Mulch -- 2 Tons Prairie Hay/Ac.
All other areas disturbed during construction are to be seeded as follows:
Seed -- Rye grass; 5 lbs./1000 Sq. Ft.
All costs associated with seeding including mobilization, preparation of ground, seeding, fertilizing, mulching, etc. shall be included in the L.S. bid item "Seeding".

An additional bid item for "Seeding, Temporary" has been included and may be used at the discretion of the design engineer. Temporary seed shall be Annual Rye at 5 lbs./1000 Sq. Ft. unless otherwise noted and shall be planted when permanent seed or sod cannot be used due to seasonal limitations. If the "Seeding, Temporary" bid item is not used, 100% of the pay item will be deducted from the contract. All costs associated with temporary seeding including mobilization, preparation of ground, seeding, etc., shall be included in the L.S. bid item "Seeding, Temporary".

- At conclusion of construction, an as-built survey will be completed by the engineer. The contractor will be required to finish and smooth grade all locations as necessary that are not within ±0.1' of street r/w plan grade or within ±0.3' of plan grade outside of street r/w. The contractor shall include all costs associated with the regrading and/or remobilization in the bid item "Grading, Mass"

- The developer for this project is Colt Meadows 1 LLC, Miles D. Millsbaugh, Manager.

Benchmarks

BM #1: TOP OF 1 1/2" ALUMINUM MKEC DISC SOUTH SIDE OF FIELD ENTRANCE. 35' WEST OF HOOVER ROAD. 17' NNE OF POWER POLE. 28' SOUTH AND 35' WEST OF NE CORNER, SE1/4, SEC. 15, T28S, R1W. ELEV. = 1313.55 NAVD88

BM #2: CROSS CUT TOP OF CURB NORTH SIDE OF NORTH CIRCLE DRIVE TO OATVILLE ELEMENTARY. 3' WEST OF FIRE HYDRANT. 7' EAST OF FENCE CORNER. 373' NORTH AND 48' WEST OF NE CORNER, SE1/4, SEC. 15, T28S, R1W. ELEV. = 1315.78 NAVD88

Stormwater Certification:
 New Development Redevelopment (Circle One)
 Stormwater Permit # _____
 NOI Permit # KS Permit NO. S-AR94-1806
 Federal Permit NO. KSRI21090

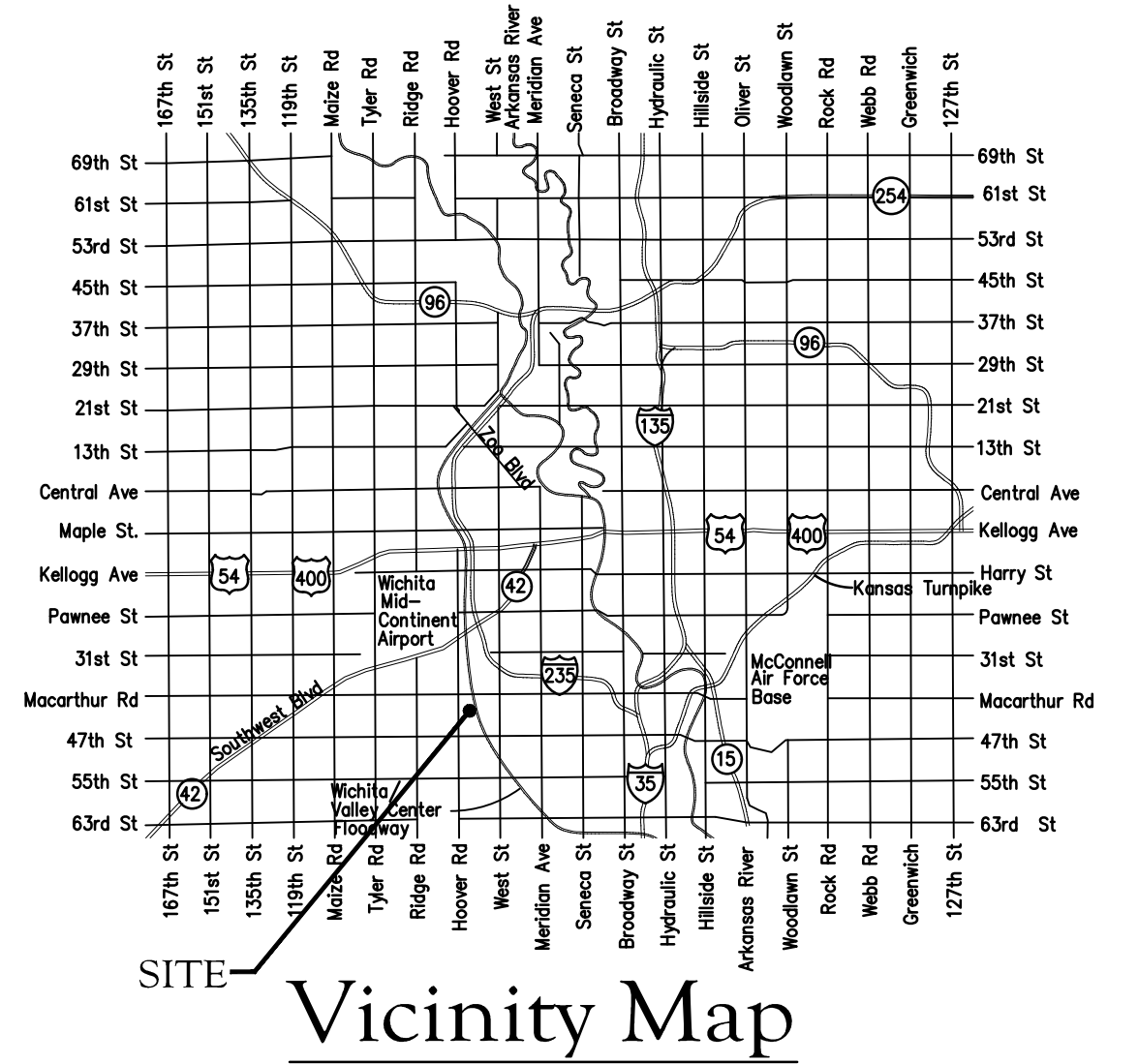
These construction plans were prepared in accordance with the current Stormwater management Regulations as set forth in the City of Wichita's Stormwater Management Ordinance 16.32 and the policies/guidelines presented in the Wichita/Sedgwick County Stormwater Manual.

Site Area (Acres) = 55.5 Ac.
 Disturbed Area (Acres) = 55.5 Ac.
 Water Quality Treatment: Wet Ponds
 Downstream Channel Protection: _____
 Detention: Wet Ponds
 The BMP used for this development is Construction entrance, silt fence, curb inlet protection & drop inlet protection.

STORM WATER SEWER IMPROVEMENTS to serve COLT MEADOWS ADDITION

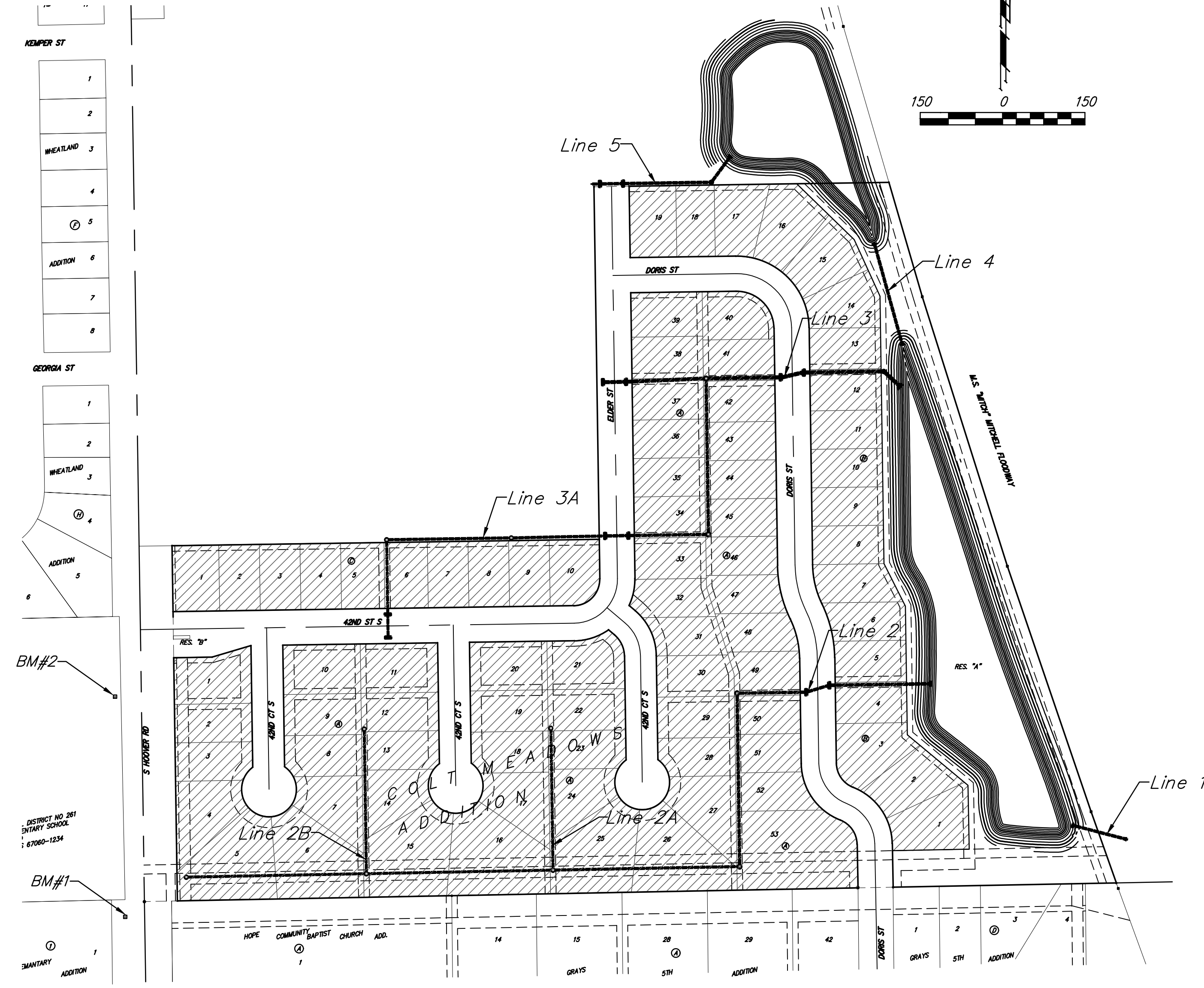
CITY OF WICHITA, KANSAS

Gary Janzen, P.E. City Engineer
 Project Number 468-2022-085500
 Org Code 47310822
 Munis Number E2092



Sheet Index

Title Sheet	1
Line 1	2
Line 2	3-7
Line 2A	8
Line 2B	9
Line 3	10-11
Line 3A	12-15
Line 4	16
Line 5	17
Mass Grading Plan	18-20
Pond Plans	21-22
Type 1A Inlet L=5' and 10' Detail	23
Backyard Inlet Detail	24
Precast Concrete Manhole Detail	25
MH-Inlet Frame & Cover Detail	26
Miscellaneous Detail	27
Headwall 15,18-24 Detail	28
Headwall 30-36 Detail	29
Headwall 42-48 Detail	30
Mass Grading Detail	31
Erosion Control BMP Details	32-36
Coordinate Sheet	37-41
Copy of Plat	42



January 9, 2023

BAUGHMAN COMPANY
 315 Ellis St. Wichita, KS 67211 316-262-7271
 BaughmanCo.com

Benefit District

E:\Projects\Colt Meadows Addition - 21-01-16222\Engineering\Phase 1\SWMD 22-04-E (63)SWMD.dwg