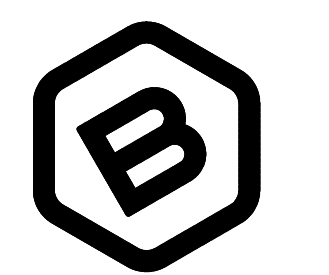
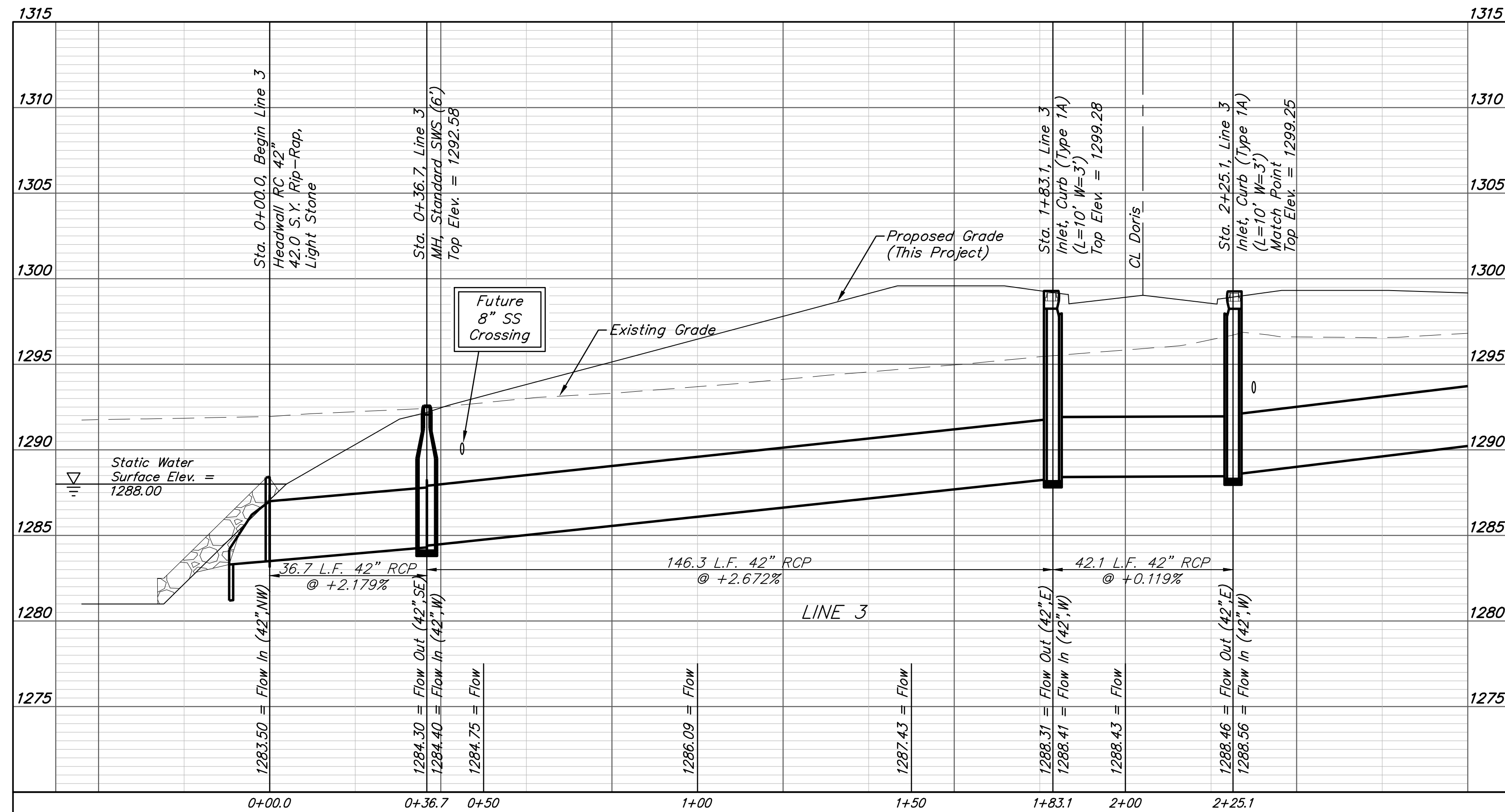
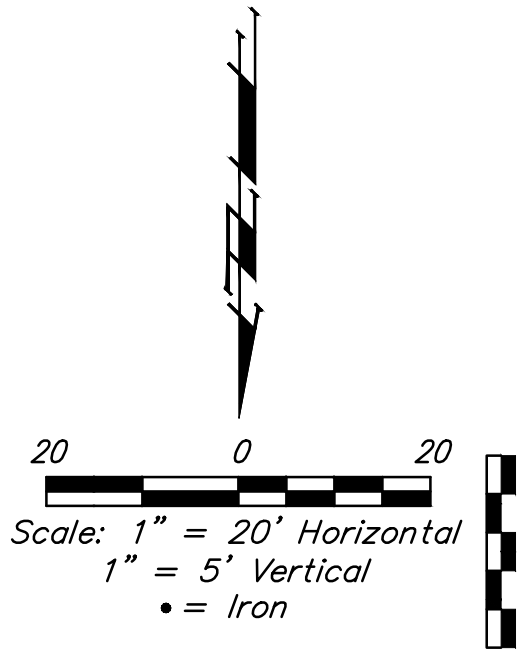
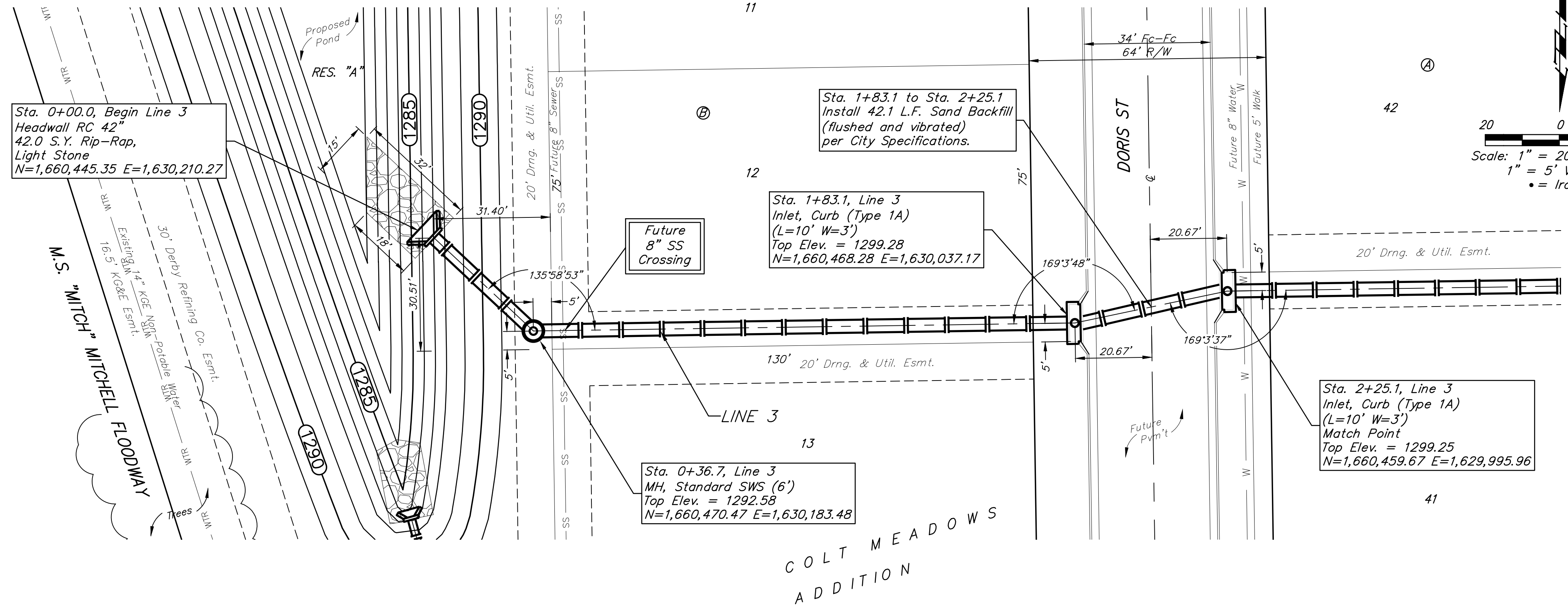


BENCHMARKS:
 BM #1: TOP OF 1 1/2" ALUMINUM MKEC DISC SOUTH SIDE OF FIELD ENTRANCE. 35' WEST OF HOOVER ROAD. 17' NNE OF POWER POLE. 28' SOUTH AND 35' WEST OF NE CORNER, SE1/4, SEC. 15, T28S, R1W. ELEV. = 1313.55 NAVD88

BM #2: CROSS CUT TOP OF CURB NORTH SIDE OF NORTH CIRCLE DRIVE TO OATVILLE ELEMENTARY. 3' WEST OF FIRE HYDRANT. 7' EAST OF FENCE CORNER. 373' NORTH AND 48' WEST OF NE CORNER, SE1/4, SEC. 15, T28S, R1W. ELEV. = 1315.78 NAVD88



BAUGHMAN COMPANY
 315 Ellis St.
 Wichita, KS 67211
 316-262-7271
 BaughmanCo.com

COLT MEADOWS ADD.

LINE 3

STORM WATER SEWER IMPROVEMENTS

PROJECT NUMBER:
22-04-E163

DESIGN: NBW DRAWN: TMS

DATE: April 27, 2022

SHEET OF
10 42

File: E:\Projects\Colt Meadows Addition_21-01-P622\Engineering\Phase 1\SWD 22-04-E163\SWD.dwg