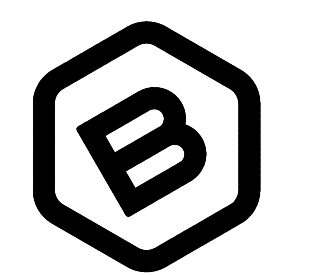
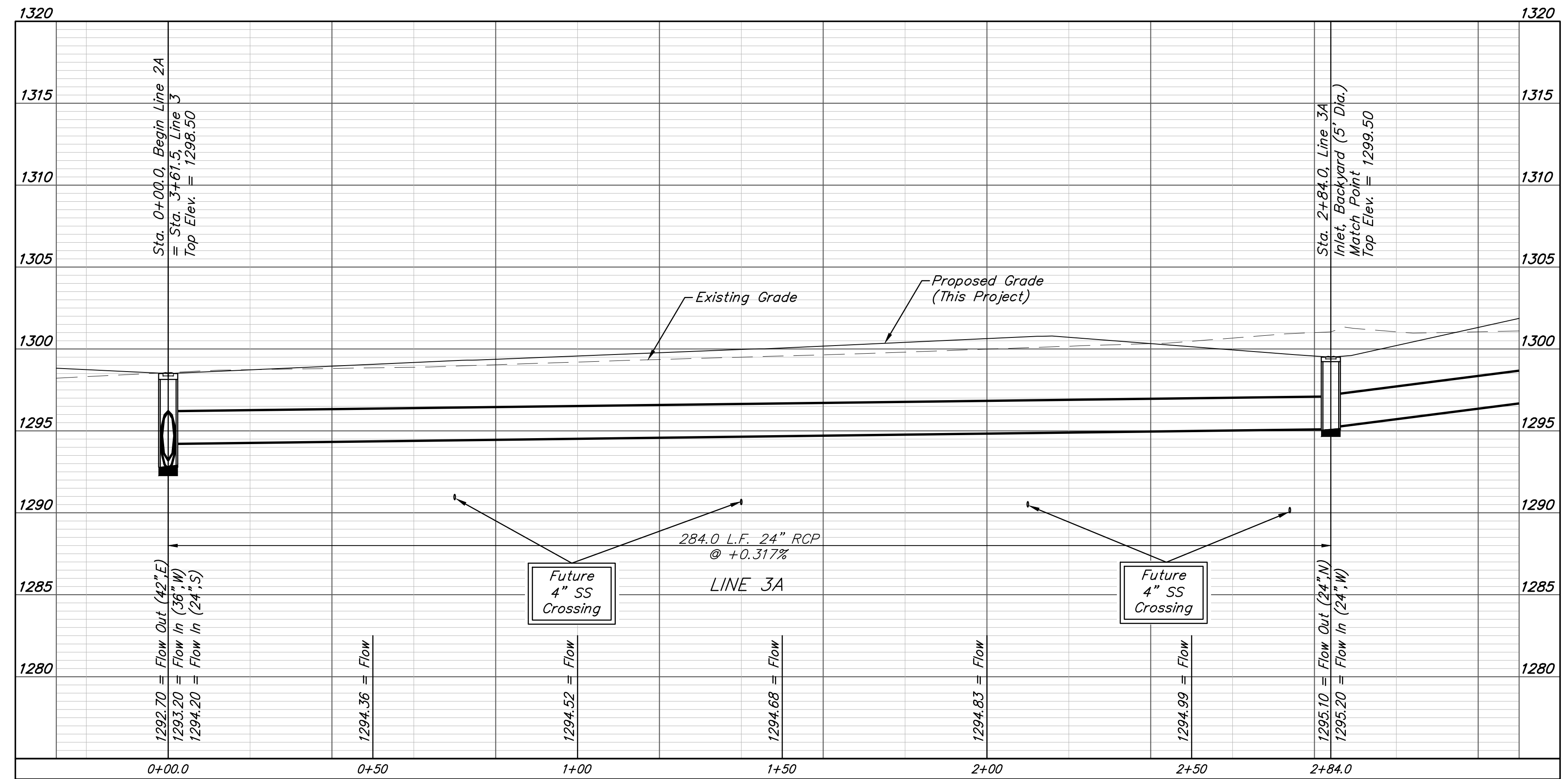
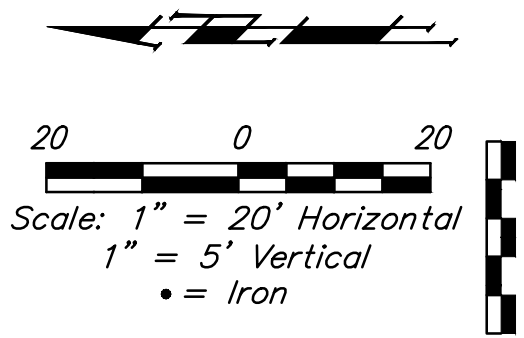
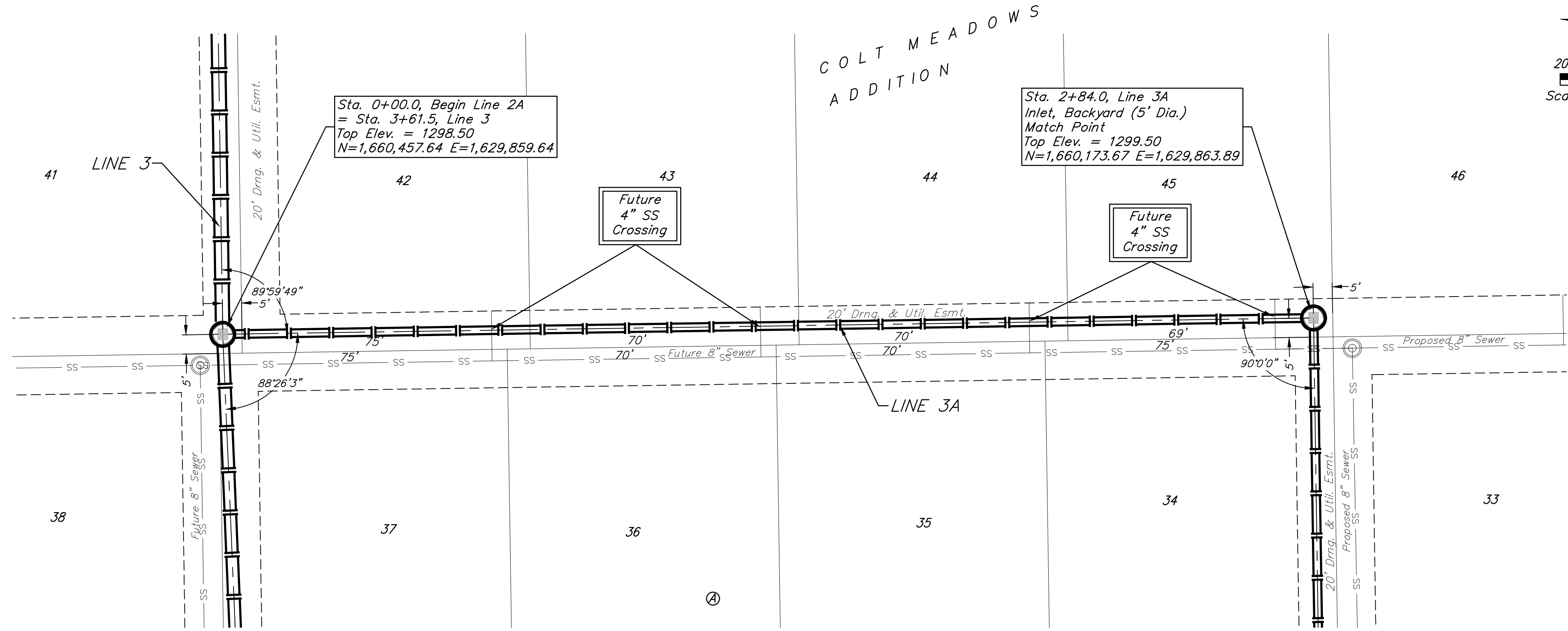


**BENCHMARKS:**  
 BM #1: TOP OF 1 1/2" ALUMINUM MKEC DISC SOUTH SIDE OF FIELD ENTRANCE. 35' WEST OF HOOVER ROAD. 17' NNE OF POWER POLE. 28' SOUTH AND 35' WEST OF NE CORNER, SE1/4, SEC. 15, T28S, R1W. ELEV. = 1313.55 NAVD88

BM #2: CROSS CUT TOP OF CURB NORTH SIDE OF NORTH CIRCLE DRIVE TO OATVILLE ELEMENTARY. 3' WEST OF FIRE HYDRANT. 7' EAST OF FENCE CORNER. 373' NORTH AND 48' WEST OF NE CORNER, SE1/4, SEC. 15, T28S, R1W. ELEV. = 1315.78 NAVD88



**BAUGHMAN COMPANY**  
 315 Ellis St.  
 Wichita, KS 67211  
 316-262-7271  
 BaughmanCo.com

COLT MEADOWS ADD.

**LINE 3A**

STORM WATER SEWER IMPROVEMENTS

PROJECT NUMBER:  
22-04-E163

DESIGN: NBW DRAWN: TMS

DATE: April 27, 2022

SHEET OF  
**12 42**

File: E:\Projects\Colt Meadows Addition\_21-01-P622\Engineering\Phase 1\SWD 22-04-E163\SWD.dwg