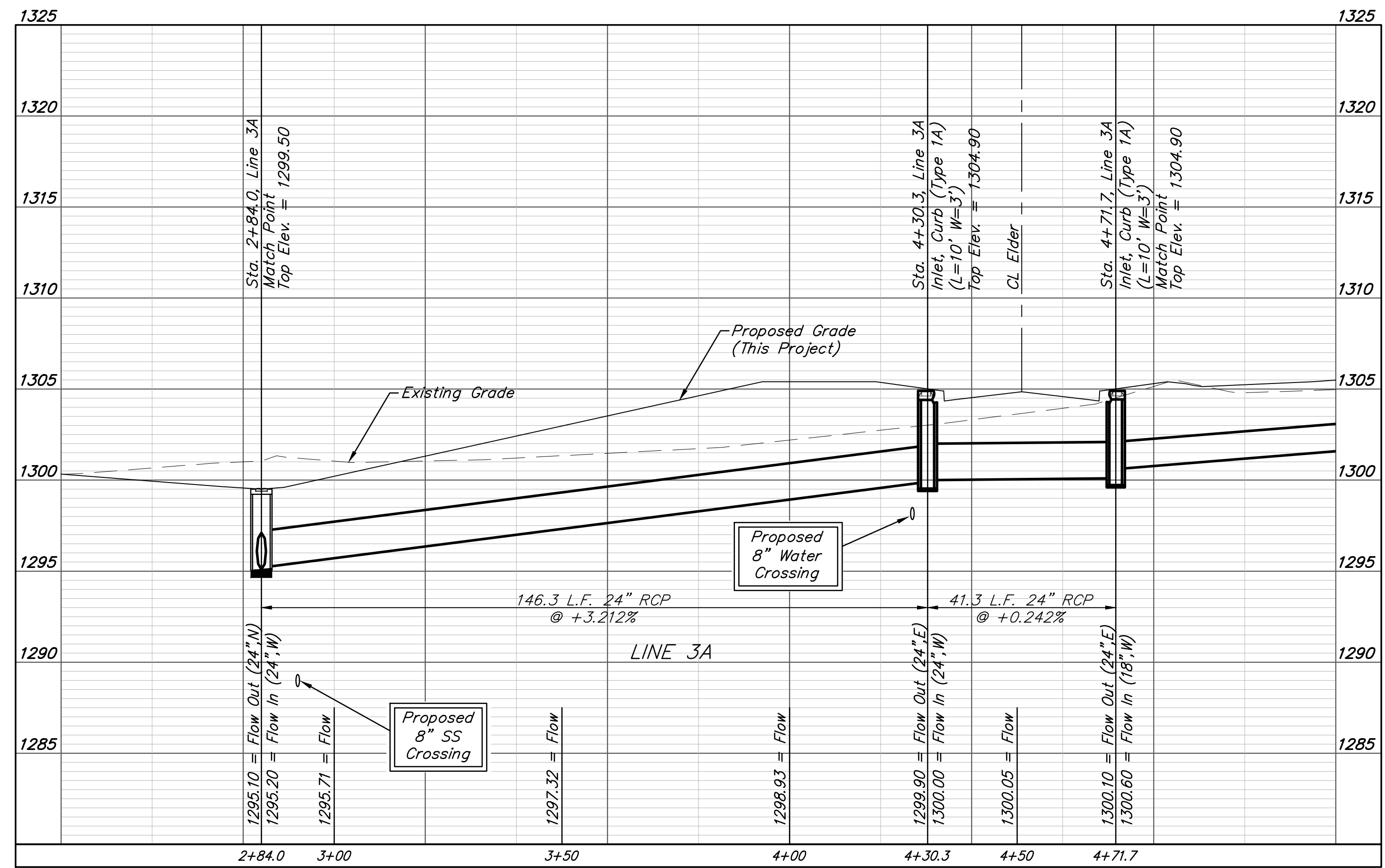
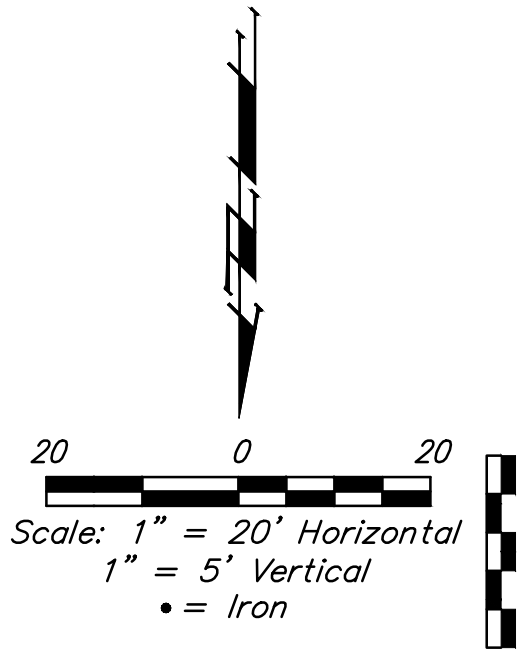
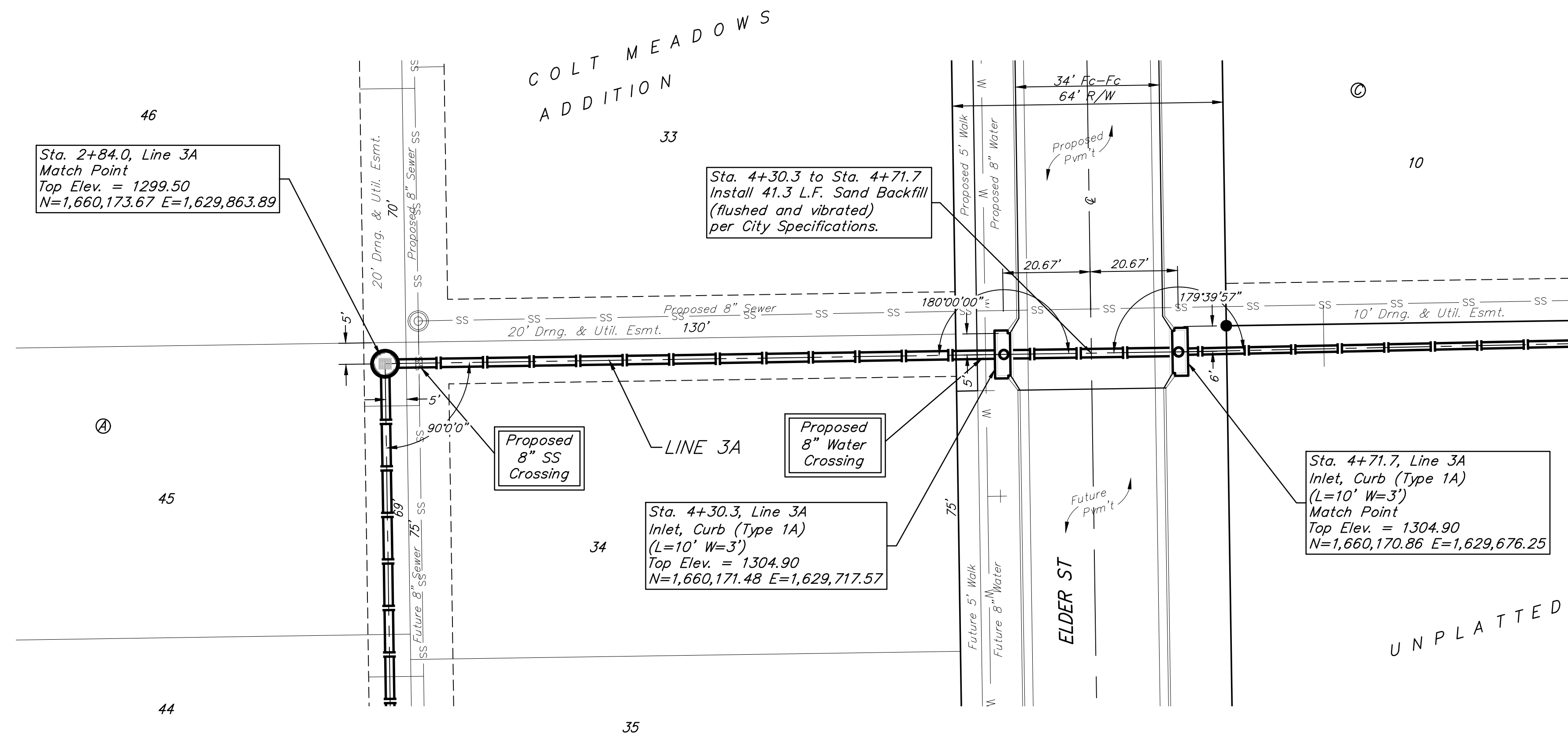


**BENCHMARKS:**  
 BM #1: TOP OF 1 1/2" ALUMINUM MKEC DISC SOUTH SIDE OF FIELD ENTRANCE. 35' WEST OF HOOVER ROAD. 17' NNE OF POWER POLE. 28' SOUTH AND 35' WEST OF NE CORNER, SE1/4, SEC. 15, T28S, R1W. ELEV. = 1313.55 NAVD88

BM #2: CROSS CUT TOP OF CURB NORTH SIDE OF NORTH CIRCLE DRIVE TO OATVILLE ELEMENTARY. 3' WEST OF FIRE HYDRANT. 7' EAST OF FENCE CORNER. 373' NORTH AND 48' WEST OF NE CORNER, SE1/4, SEC. 15, T28S, R1W. ELEV. = 1315.78 NAVD88



BRENT WOOLLEN  
LICENSED  
PROFESSIONAL ENGINEER  
8470  
01/25/2023  
KANSAS

**B**

**BAUGHMAN  
COMPANY**

315 Ellis St.  
Wichita, KS 67211  
316-262-7271  
BaughmanCo.com

COLT MEADOWS ADD.

**LINE 3A**

STORM WATER SEWER  
IMPROVEMENTS

PROJECT NUMBER:  
22-04-E163

DESIGN: NBW DRAWN: TMS

DATE: April 27, 2022

SHEET  
**13** OF  
**42**

File: E:\Projects\Colt Meadows Addition\_21-01-P622\Engineering\Phase 1\SWD 22-04-E163\SWD.dwg