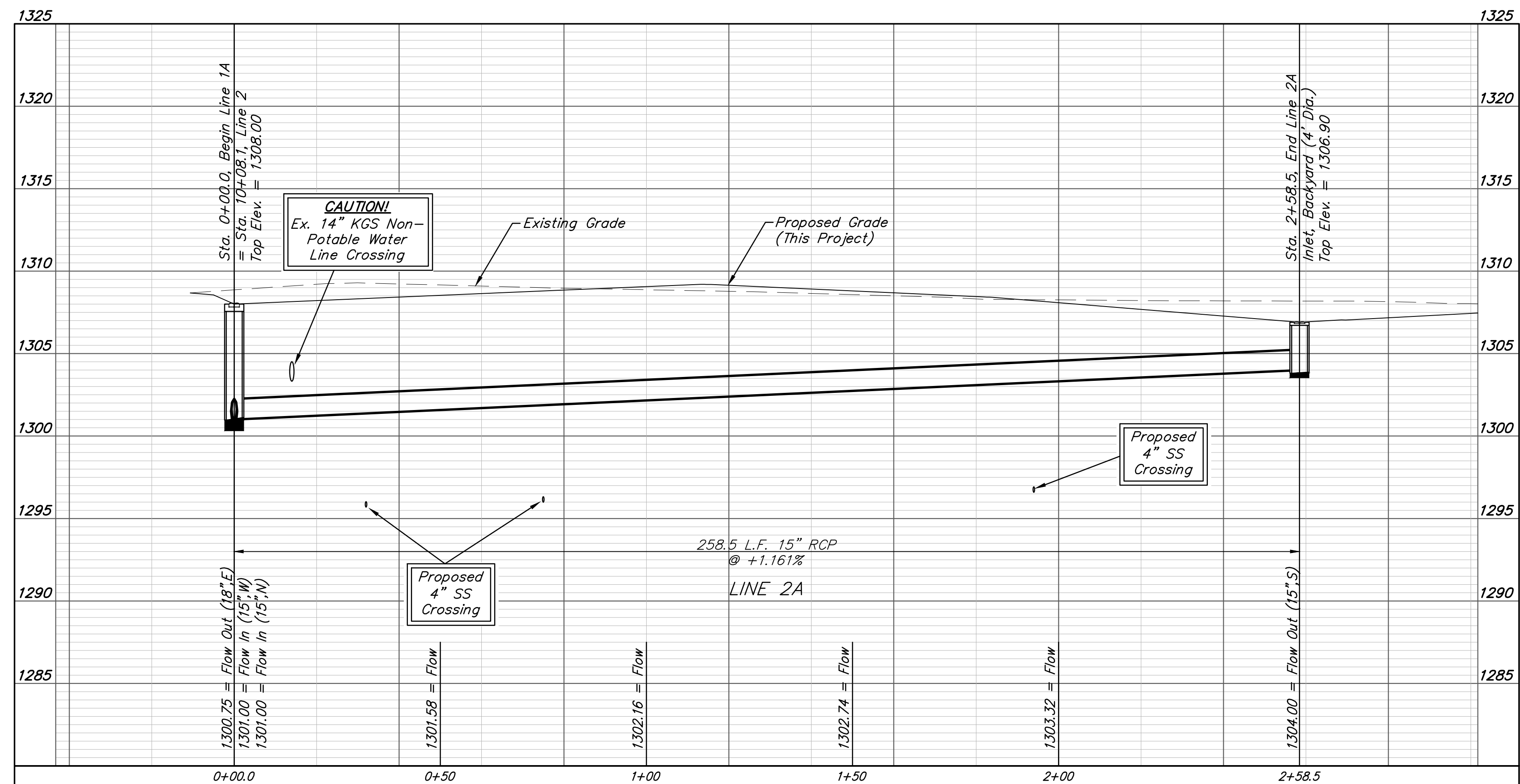
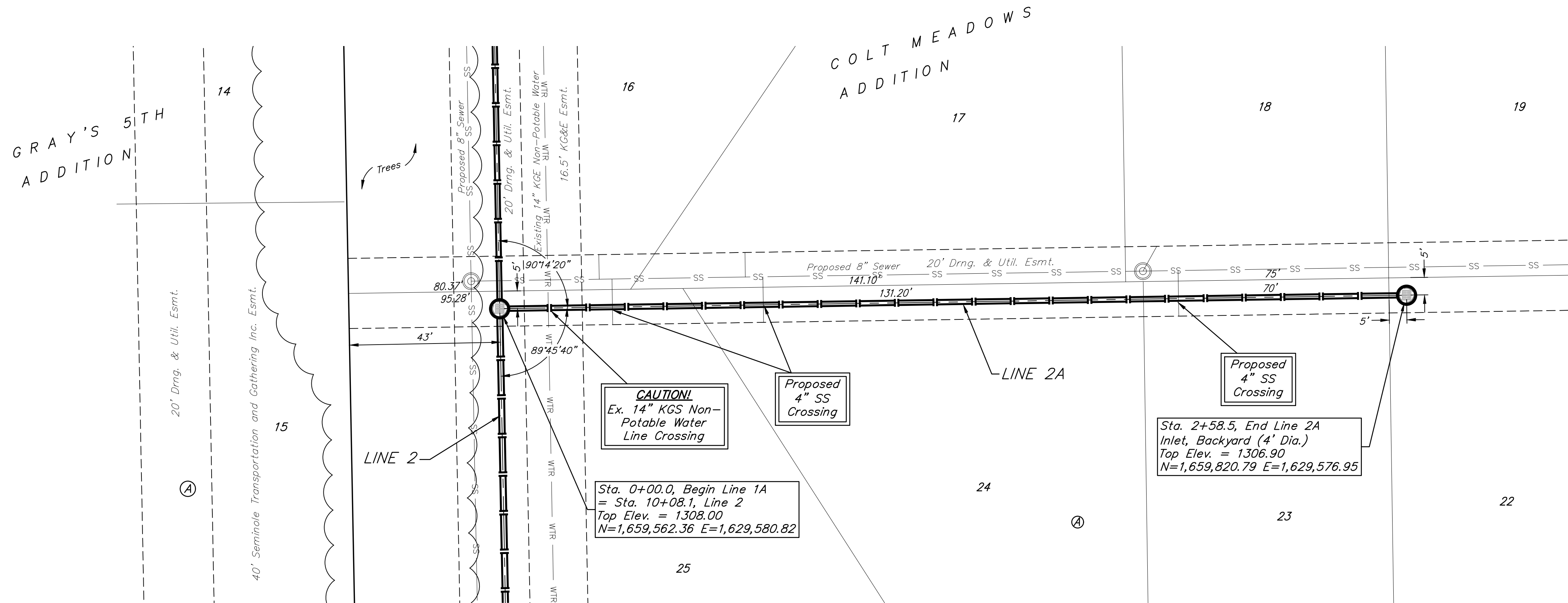
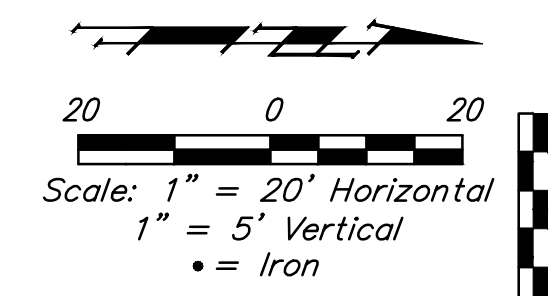


BENCHMARKS:
 BM #1: TOP OF 1 1/2" ALUMINUM MKEC DISC SOUTH SIDE OF FIELD ENTRANCE. 35' WEST OF HOOVER ROAD. 17" NNE OF POWER POLE. 28' SOUTH AND 35' WEST OF NE CORNER, SE1/4, SEC. 15, T28S, R1W. ELEV. = 1313.55 NAVD88

BM #2: CROSS CUT TOP OF CURB NORTH SIDE OF NORTH CIRCLE DRIVE TO OATVILLE ELEMENTARY. 3' WEST OF FIRE HYDRANT. 7' EAST OF FENCE CORNER. 373' NORTH AND 48' WEST OF NE CORNER, SE1/4, SEC. 15, T28S, R1W. ELEV. = 1315.78 NAVD88

Trees in conflict with SWS construction to be removed by contractor. To be paid for as lump sum bid item "Site Clearing"

All other trees shall remain and be protected from damage during construction. Overhanging limbs shall be trimmed by the Contractor using a chain saw only as necessary for construction and with approval of the Engineer. Cost of tree trimming to be included in bid item "Site Clearing"



BAUGHMAN COMPANY
 315 Ellis St.
 Wichita, KS 67211
 316-262-7271
 BaughmanCo.com

COLT MEADOWS ADD.

LINE 2A

STORM WATER SEWER IMPROVEMENTS

PROJECT NUMBER:
22-04-E163

DESIGN: NBW DRAWN: TMS
 DATE: August 23, 2022

SHEET **8** OF **42**

File: E:\Projects\Colt Meadows Addition_21-01-P622\Engineering\Phase 1\SWD 22-04-E163\SWD.dwg