

GENERAL NOTES:

- The Contractor shall comply with all applicable safety regulations. All construction shall be completed following current City Standard Specifications and Special Provisions.
- Contractor will be required to provide notice to utility companies a minimum of seventy-two (72) hours prior to any excavation, as follows:

Kansas One-Call 687-2470

The Contractor must notify the following in case of an emergency:

AT&T	1-800-246-8464
Black Hills Energy	1-800-694-8989
City of Wichita Water & Sewer	1-316-219-8921
City of Wichita Stormwater	1-316-268-4090
City of Wichita Traffic	1-316-268-4034
Cox Communications	1-888-249-3530
Kansas Gas Service	1-888-482-4950
Energy	1-800-544-4857

- Utility service lines, poles, etc. are to be adjusted as necessary by others prior to construction unless the plans specifically call for their adjustment by the Contractor or unless the plans specifically identify a utility to be adjusted by its owner during construction. Existing utilities and their location, as shown on the plans, represent the best information obtainable for design. The Contractor will be required to work around existing utilities within the right-of-way which do not conflict with proposed construction.
- Rubble from the removal of miscellaneous structures and excess excavation which is to be wasted shall be disposed of on sites to be provided by the Contractor. These sites shall be approved by the Engineer as to suitability, appearance and site location. Locations, in the opinion of the Engineer, that will leave an unsightly appearance will not be approved. All disposal sites must be approved by the Kansas Department of Health and Environment. Material either stockpiled or disposed of in a flood plain will require a Kansas State Board of Agriculture permit. Any material dumped in waters of the United States or wetlands is subject to U.S. Corps of Engineers permitting regulations. Any material buried or stockpiled beyond approved construction limits will require additional archaeological investigations unless buried in a previously approved borrow location.
- Trees and shrubs in public right-of-way which are in direct conflict with proposed new construction shall be removed by the Contractor with the City Engineer's approval. Trees and shrubs which are not in direct conflict with proposed new construction shall be saved and protected from damage.
- The Contractor shall give all property owners and/or tenants of developed property abutting the construction of this project a minimum of ten (10) days notice prior to start of construction.
- The Contractor shall be responsible for preserving property irons. The Contractor will be required to re-establish any property irons which are damaged or destroyed by his construction operations. Such irons shall be re-established by a licensed land surveyor in accordance with state laws.
- All elevations shown are NAVD88.
- All stubs and capped pipes shall be located with green plastic tape in the same manner as risers.
- Connecting to Existing Manholes: Prior to laying sewer lines using existing stubs in existing manholes, the Contractor shall expose and verify the elevation, grade and alignment of existing stubs and notify the Engineer of any deviation from the plans. Where the stub is unusable due to elevation grade or alignment, the Contractor shall remove the stub and plug the hole, and reshape the existing manhole invert to provide smooth flow. Where connection to an existing manhole that does not have an existing stub, the Contractor shall core cut into existing manhole wall to make connection using approved water stop gasket, and reshape the existing manhole invert to provide smooth flow. The cost of connect to existing manholes is incidental to the project.
- Contractor shall limit the extent of trench open overnight and weekends to less than 50 feet.
- Contractor shall provide positive drainage away from all manhole covers.
- The Contractor shall prevent any construction debris from entering the existing sanitary sewer during construction.

- The Contractor shall protect from damage and support existing utilities through construction as approved by the utility owner and the Engineer at the contractor's expense.
- Contractor shall grade around exposed manholes at a 1:1 slope. Manholes set lower than existing grade shall have a 9" berm constructed around manhole to prevent infiltration into sanitary sewer system. Cost of dirt, labor, equipment, etc. to be incidental to cost of manhole. Easements shall be graded with the street improvement project as part of the mass grading plan.
- All areas disturbed during construction are to be seeded as follows:
Seed --- Rye grass; 5 lbs./1000 Sq. Ft.
All costs associated with seeding including mobilization, preparation of ground, seeding, fertilizing, mulching, etc. shall be included in the L.S. bid item "Seeding".

- All existing and proposed erosion control measures including silt fencing, erosion control mat, straw bales, inlet barriers, and const. entrance shall be maintained throughout construction by the contractor and until project is accepted by the City of Wichita. The on-site engineer shall complete weekly reports on the status of erosion control measures. The contractor shall be required to comply with maintenance and/or replacement of erosion control measures as determined by the on-site engineer until project is accepted by City of Wichita. Maintenance and/or replacement of erosion control measures to be paid by L.S. bid item "Maintain Existing BMPs".
- All excess excavation shall remain on-site and shall be stockpiled or spread at a location determined by the engineer.
- The developer for this project is Jay W. Russell, P.O. Box 75337, Wichita, KS 67272 (316)990-2105.
- All costs associate with dewatering during construction shall be included in lump sum bid item "Dewatering".
- Existing trees shall shall be trimmed/removed ONLY with approval of the Developer. Trimming of overhanging limbs will be permitted only with chainsaws. Trees not in direct conflict with new construction shall remain and be protected from damage. Prior to the start of construction, the Contractor shall schedule an on-site meeting will occur with the Developer to discuss treed areas. All trimming and/or removal shall be included in bid item "Site Clearing".

Benchmarks

BM #1: "□" on south end of headwall, ~40' east of SE corner of Lot 116, Block B, Northgate 5th Addition.
Elev. = 1327.81 (NAVD 88)

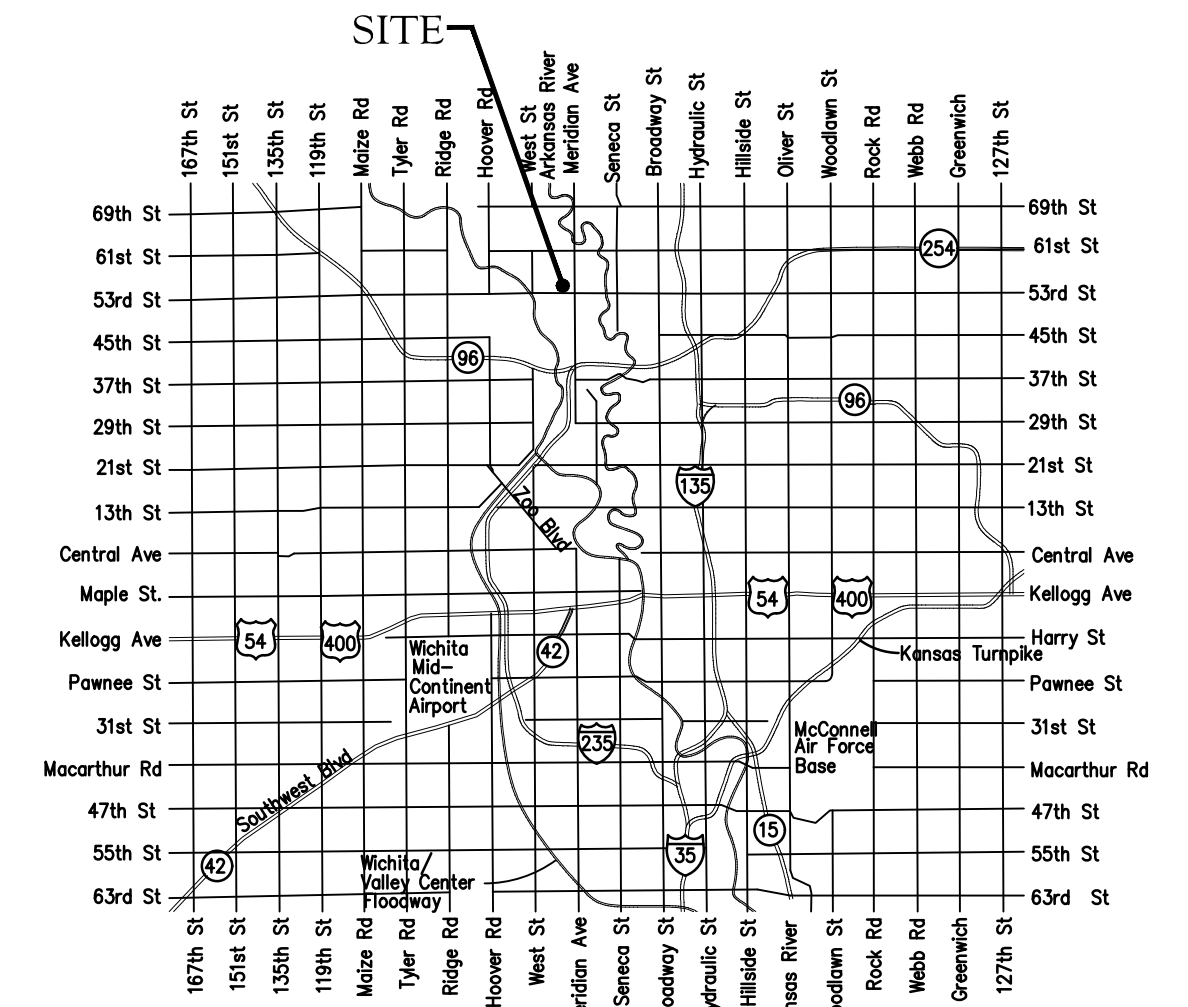
BM #2: Cross on SE corner of curb inlet adjacent to NE corner of Lot 123, Block B, Northgate 5th Addition.
Elev. = 1335.64 (NAVD 88)

SANITARY SEWER IMPROVEMENTS to serve NORTHGATE 5TH ADD. - PH. 4&5

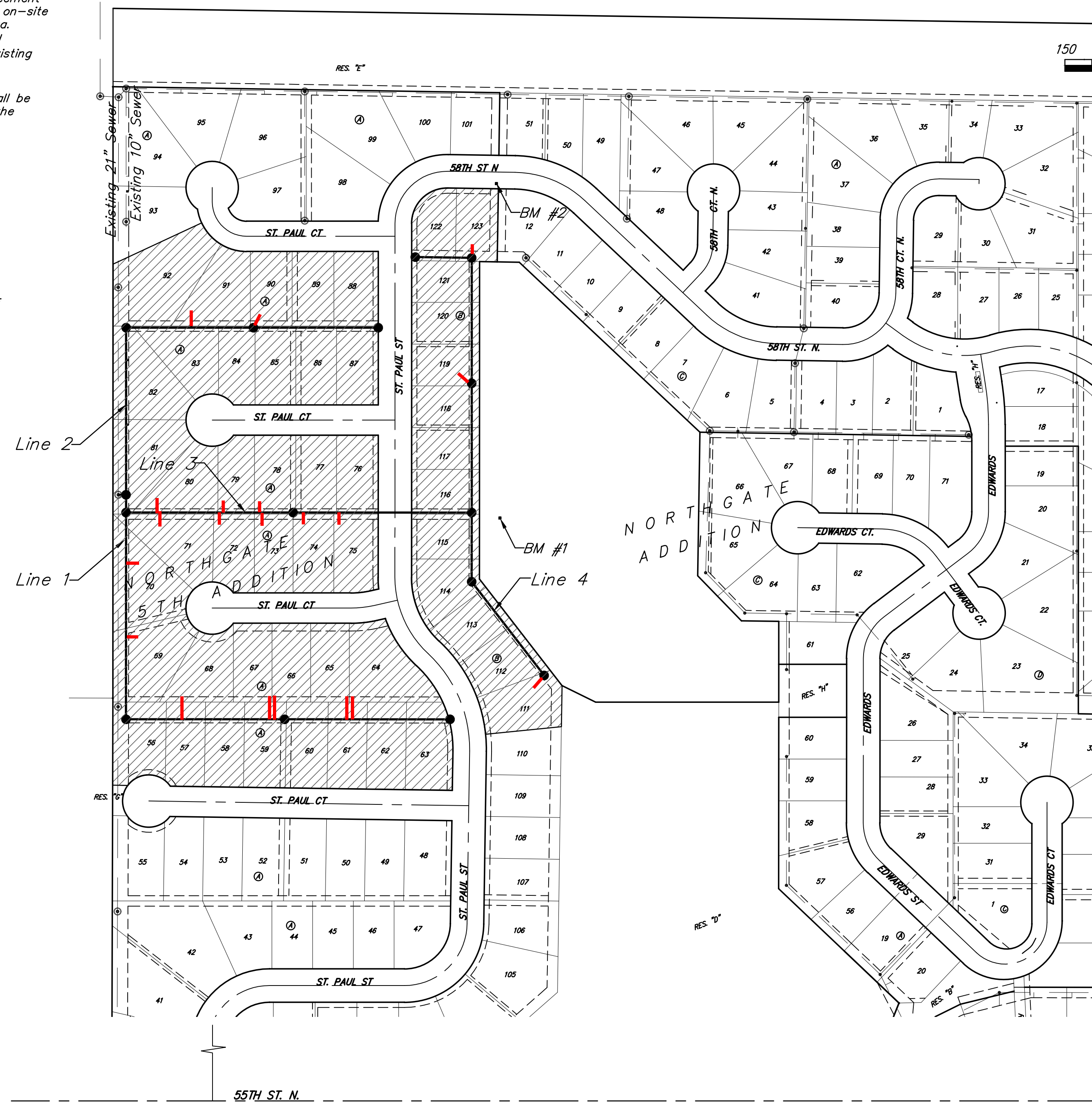
CITY OF WICHITA, KANSAS

Gary Janzen, P.E. City Engineer
Project Number 468-2021-003143
Org Code 47264821
Munis Number E1094

Nowak Construction - Contractor
K. Kerns - City of Wichita, Field Project Engineer
R. Canillo - City of Wichita, Inspector
As-built
Stubs & Risers
Release Date (for connection purposes only): 2/8/2023
Completion Date:
pdf: 2/6/2023 apr



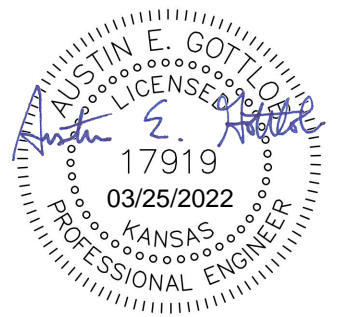
Vicinity Map



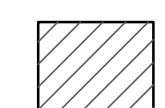
Sheet Index

Title Sheet	1
Line 1	2-3
Line 2	4
Line 3	5-6
Line 4	7
Additional Risers	8
Erosion Control Plan	9
Precast SS Manhole Detail	10
Manhole Frame & Cover Detail	11
Vertical Riser Detail	12
Erosion Control BMP Details	13-17
Coordinate Sheet	18
Copy of Plat	19

APPROVED AS NOTED
BY WICHITA PUBLIC WORKS ENGINEERING DIVISION
Engineering *Matt Schaefer* 4/6/22
An approved copy of these plans signed by City staff are required on-site.



Benefit District



E:\Projects\Northgate 5th Addition - 20-03-P5398\Engineering\Phase 5\SS 21-05-E512\Sewer.dwg

BENCHMARKS:

BM #1: "□" on south end of headwall, ~40' east of SE corner of Lot 116, Block B, Northgate 5th Addition.
Elev. = 1327.81 (NAVD 88)

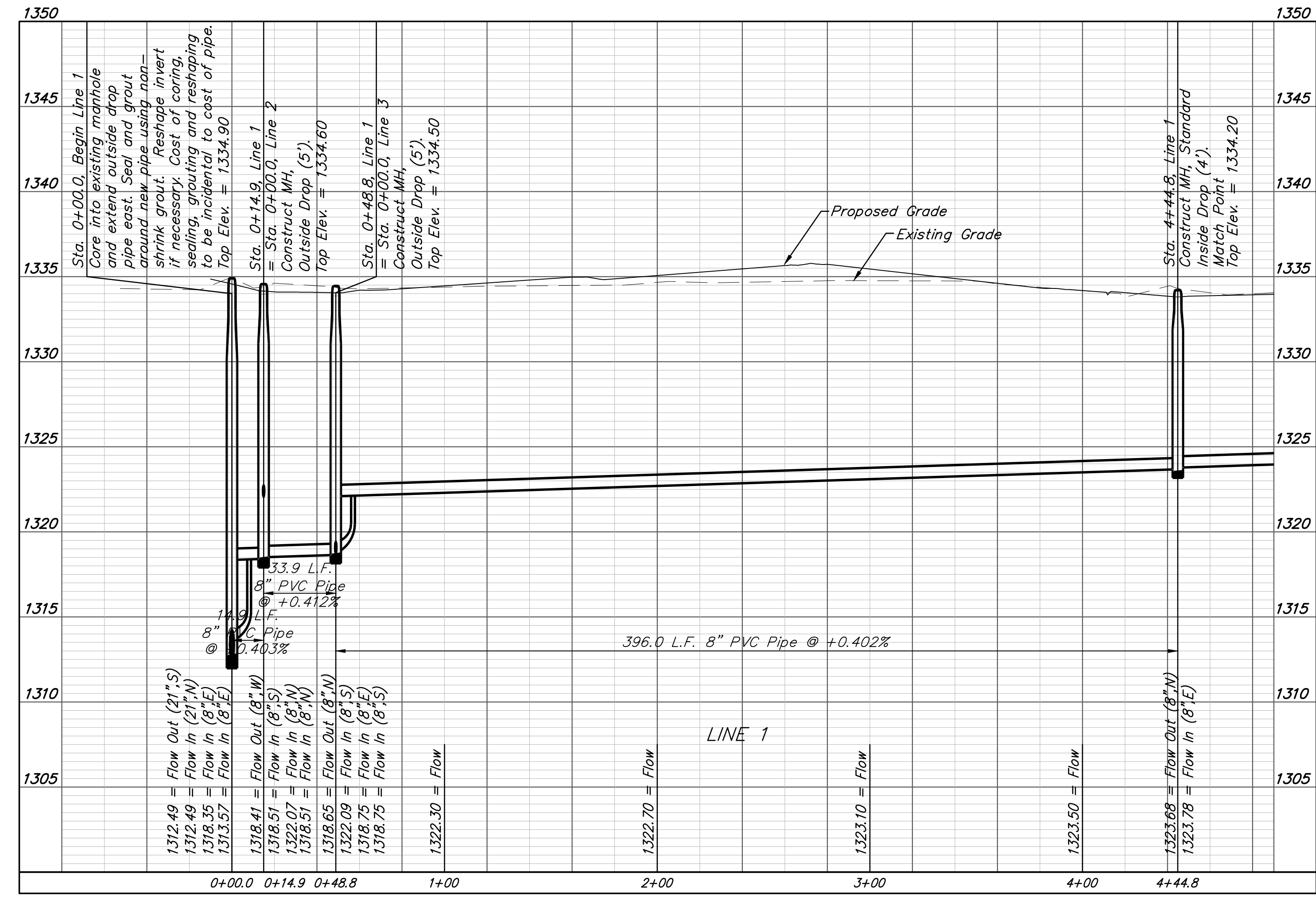
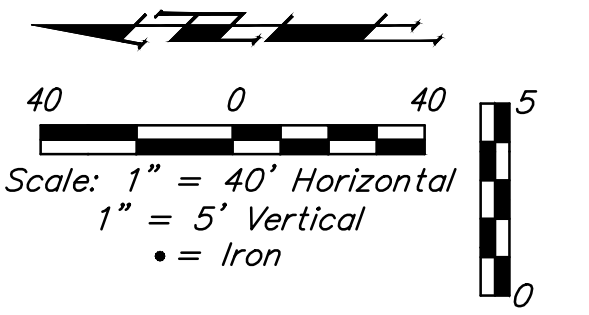
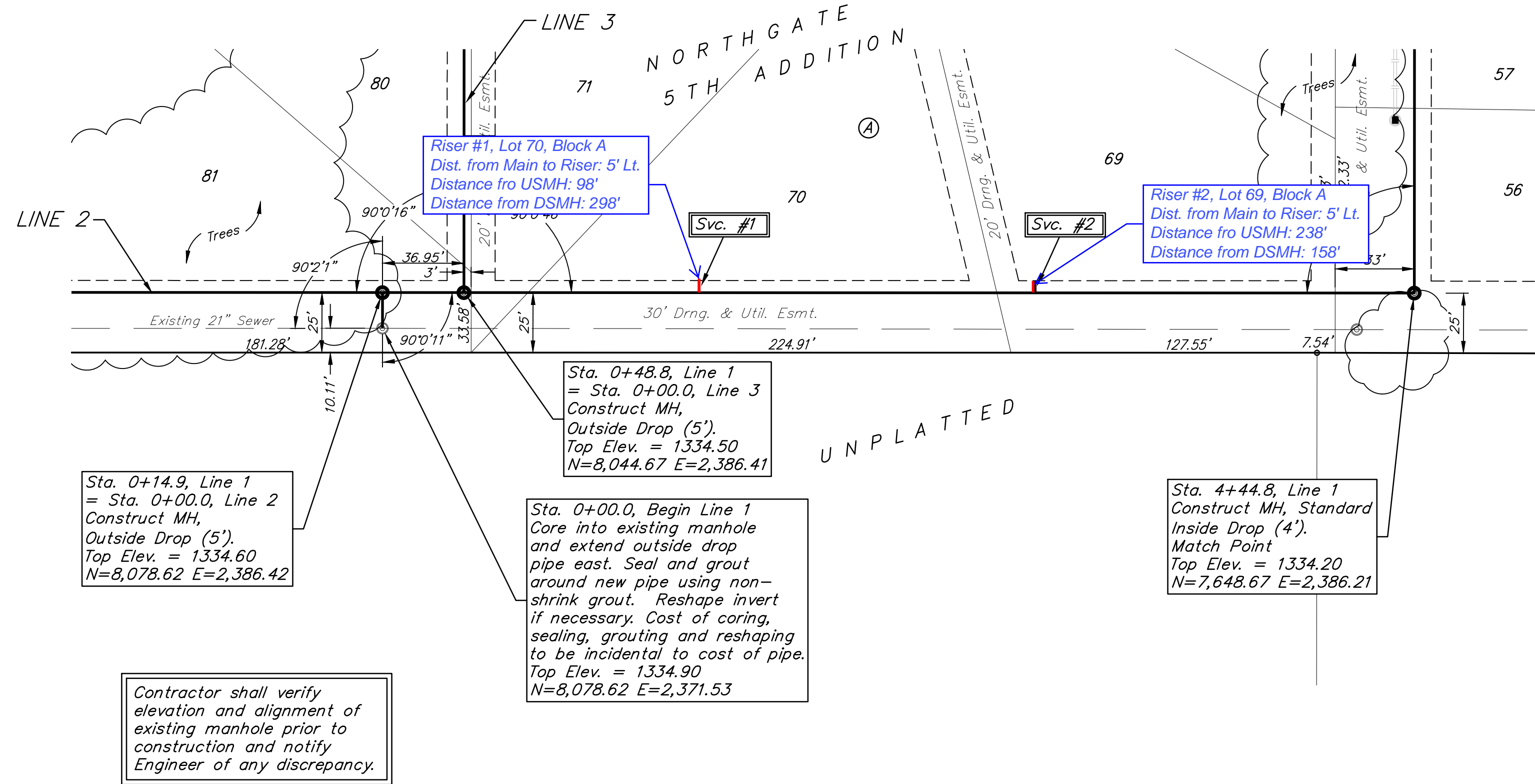
BM #2: Cross on SE corner of curb inlet adjacent to NE corner of Lot 123, Block B, Northgate 5th Addition.
Elev. = 1335.64 (NAVD 88)

Existing trees shall be trimmed/removed ONLY with approval of the Developer. Trimming of overhanging limbs will be permitted only with chainsaws. Trees not in direct conflict with new construction shall remain and be protected from damage. Prior to the start of construction, the Contractor shall schedule an on-site meeting with the Developer to discuss treed areas. All trimming and/or removal shall be included in bid item "Site Clearing".

SEWER SERVICE TABLE

NUMBER	TYPE	LOCATION				FOR INFORMATION ONLY	
		LOT NO.	BLOCK NO.	LINE NO.	STATION \ DIRECTION	APPROXIMATE LENGTH 4" PIPE	VERTICAL
1	8" X 4" Tee W/Riser	70	A	1	1+46.8/Lt.	8.5'	5.0'
2	8" X 4" Tee W/Riser	69	A	1	2+86.8/Lt.	8.5'	5.0'

NOTE: Vertical Riser Pipe shall be extended to 2' minimum above ground water elevation and 4' maximum below proposed ground elevation.



BAUGHMAN COMPANY

315 Ellis St.
Wichita, KS 67211
316-262-7271
BaughmanCo.com

NORTHGATE 5TH ADD.
Phase 4&5

LINE 1

SANITARY SEWER IMPROVEMENTS

PROJECT NUMBER:
21-05-E912

DESIGN: AEG DRAWN: TMS

DATE: March 24, 2022

SHEET **2** OF **19**

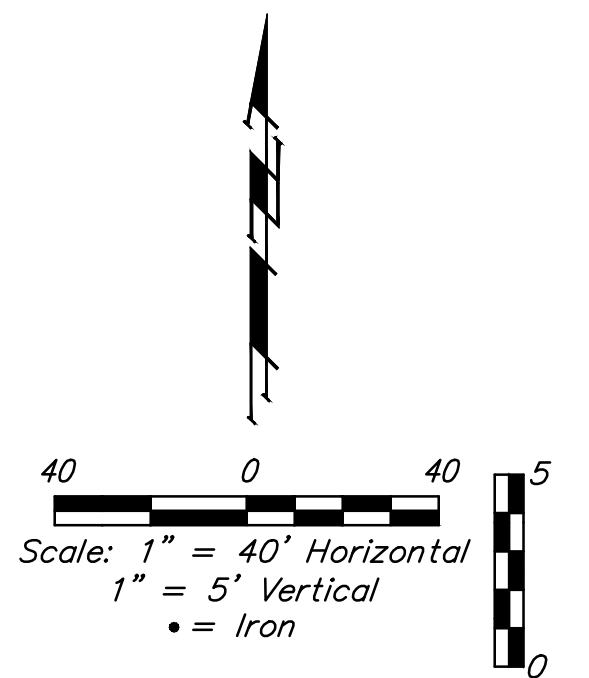
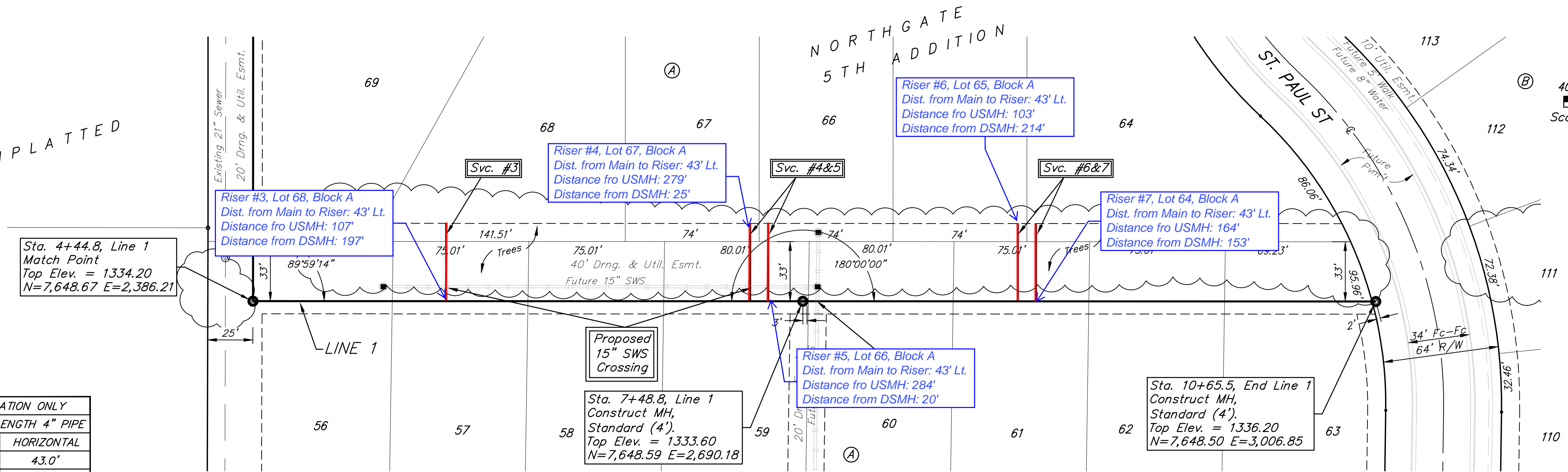
BENCHMARKS:

BM #1: "□" on south end of headwall, ~40' east of SE corner of Lot 116, Block B, Northgate 5th Addition.
Elev. = 1327.81 (NAVD 88)

BM #2: Cross on SE corner of curb inlet adjacent to NE corner of Lot 123, Block B, Northgate 5th Addition.
Elev. = 1335.64 (NAVD 88)

Existing trees shall be trimmed/removed ONLY with approval of the Developer. Trimming of overhanging limbs will be permitted only with chainsaws. Trees not in direct conflict with new construction shall remain and be protected from damage. Prior to the start of construction, the Contractor shall schedule an on-site meeting will occur with the Developer to discuss treed areas. All trimming and/or removal shall be included in bid item "Site Clearing".

UNPLATTED

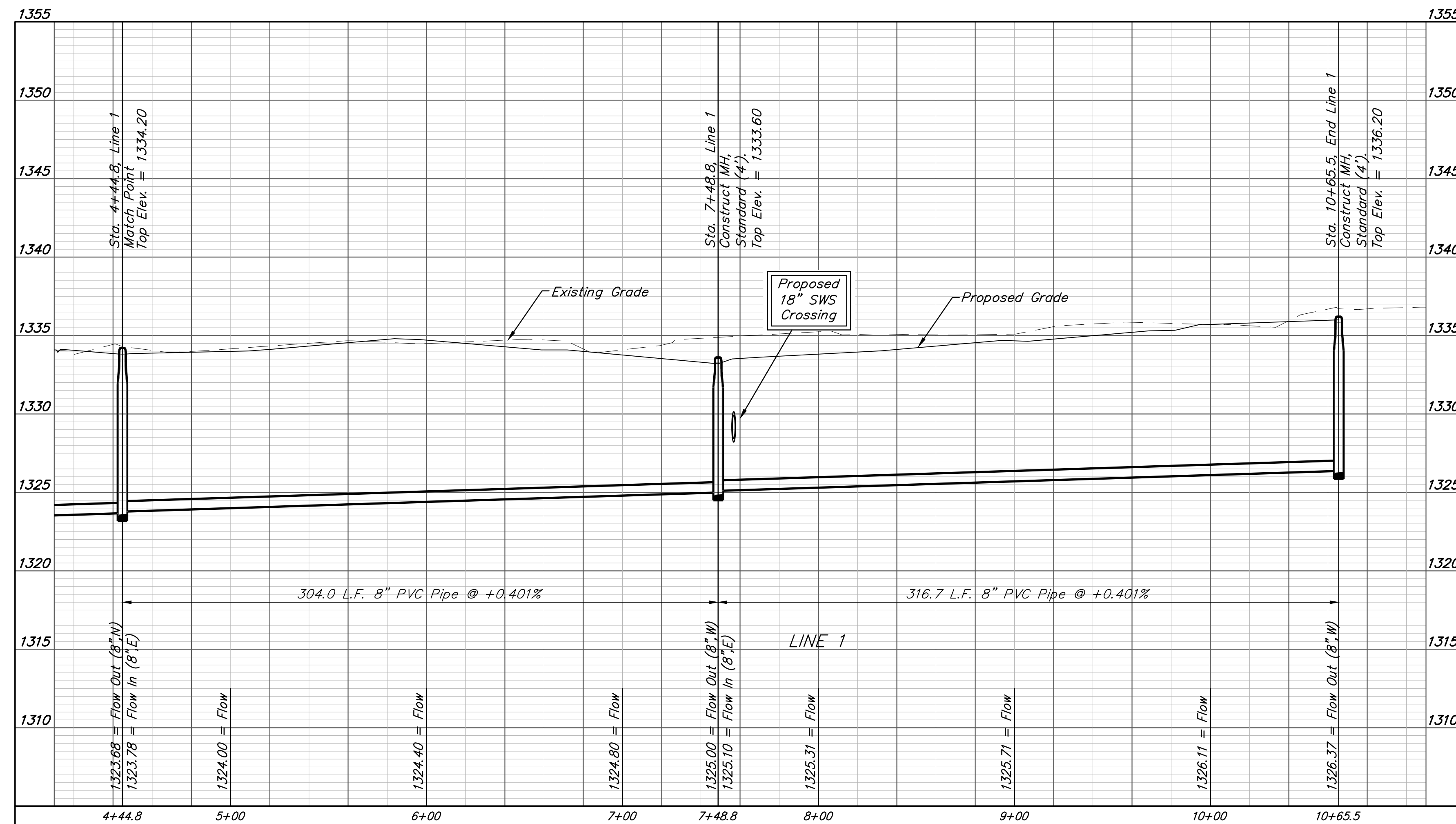


SEWER SERVICE TABLE

NUMBER	TYPE	LOCATION			STATION \ DIRECTION	FOR INFORMATION ONLY	
		LOT NO.	BLOCK NO.	LINE NO.		APPROXIMATE LENGTH 4" PIPE	VERTICAL
3	8" X 4" Tee W/Riser	68	A	1	5+51.5/Lt.	8.5'	43.0'
4	8" X 4" Tee W/Riser	67	A	1	7+19.5/Lt.	6.5'	43.0'
5	8" X 4" Tee W/Riser	66	A	1	7+29.5/Lt.	6.5'	43.0'
6	8" X 4" Tee W/Riser	65	A	1	8+67.5/Lt.	7.0'	43.0'
7	8" X 4" Tee W/Riser	64	A	1	8+77.5/Lt.	7.0'	43.0'

NOTE: Vertical Riser Pipe shall be extended to 2' minimum above ground water elevation and 4' maximum below proposed ground elevation.

Risers #3-#7:
Contractor to field adjust riser locations as necessary to avoid removal of large trees.



BAUGHMAN COMPANY

315 Ellis St.
Wichita, KS 67211
316-262-7271
BaughmanCo.com

NORTHGATE 5TH ADD.
Phase 4&5

LINE 1

SANITARY SEWER IMPROVEMENTS

PROJECT NUMBER:
21-05-E912

DESIGN: AEG DRAWN: TMS

DATE: March 24, 2022

SHEET **3** OF **19**

SEWER SERVICE TABLE

NUMBER	TYPE	LOCATION			FOR INFORMATION ONLY		
		LOT NO.	BLOCK NO.	LINE NO.	STATION \ DIRECTION	APPROXIMATE LENGTH 4" PIPE	
8	8" X 4" Tee W/Riser	81	A	2	1+34.2/Rt.	9.0'	5.0'
9	8" X 4" Tee W/Riser	82	A	2	2+58.1/Rt.	8.0'	5.0'
10	8" X 4" Tee W/Riser	91	A	2	4+45.1/Lt.	5.5'	13.0'
11	4" Stub W/Riser	90	A	2	5+64.0/Lt.	5.0'	13.9'

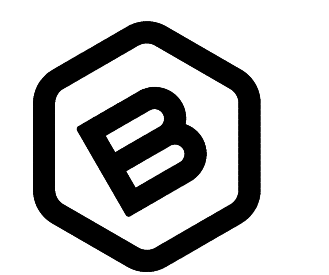
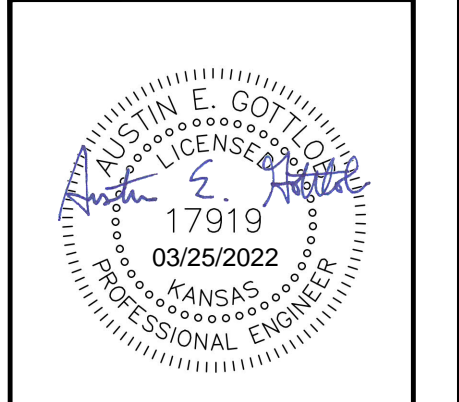
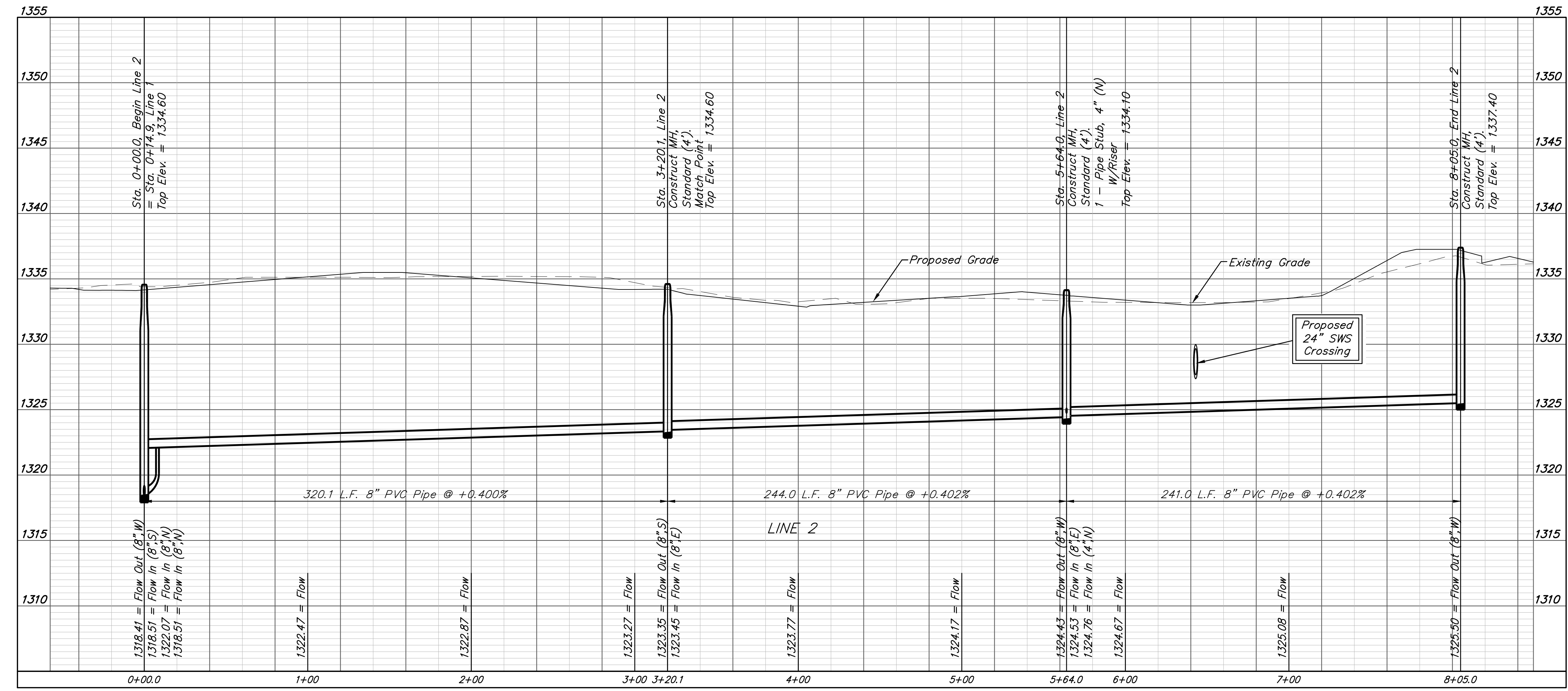
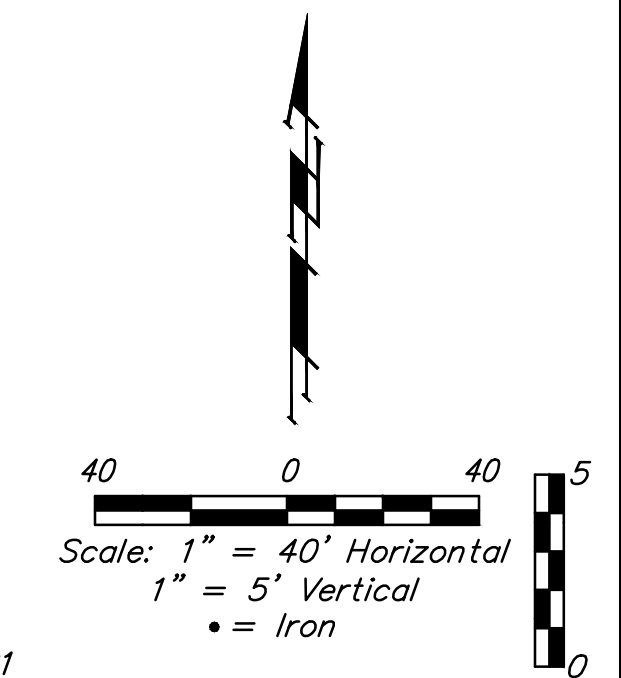
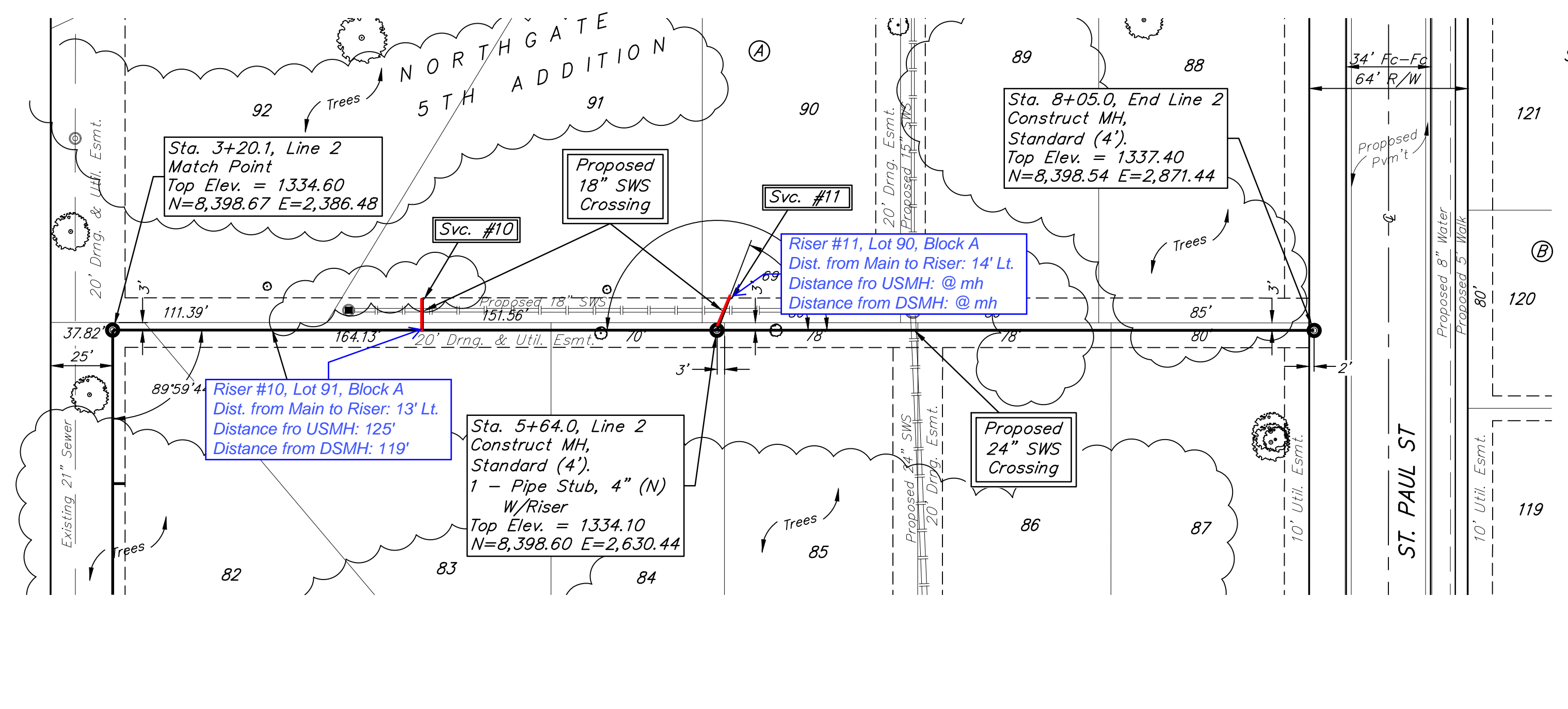
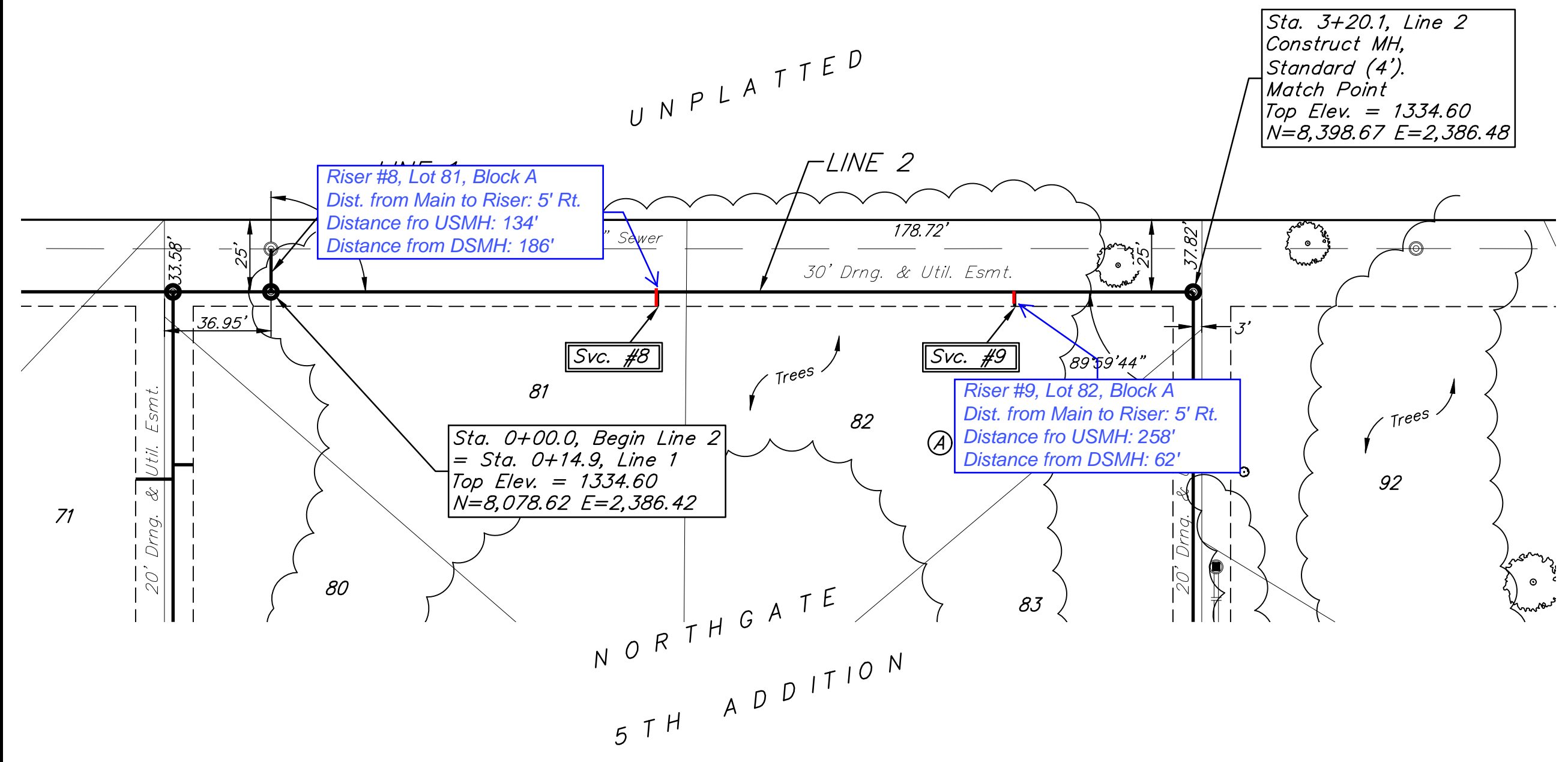
NOTE: Vertical Riser Pipe shall be extended to 2' minimum above ground water elevation and 4' maximum below proposed ground elevation.

BENCHMARKS:

BM #1: "□" on south end of headwall, ~40' east of SE corner of Lot 116, Block B, Northgate 5th Addition.
Elev. = 1327.81 (NAVD 88)

BM #2: Cross on SE corner of curb inlet adjacent to NE corner of Lot 123, Block B, Northgate 5th Addition.
Elev. = 1335.64 (NAVD 88)

Existing trees shall be trimmed/removed ONLY with approval of the Developer. Trimming of overhanging limbs will be permitted only with chainsaws. Trees not in direct conflict with new construction shall remain and be protected from damage. Prior to the start of construction, the Contractor shall schedule an on-site meeting with the Developer to discuss treed areas. All trimming and/or removal shall be included in bid item "Site Clearing".



BAUGHMAN COMPANY
315 Ellis St.
Wichita, KS 67211
316-262-7271
BaughmanCo.com

NORTHGATE 5TH ADD.
Phase 4&5

LINE 2

SANITARY SEWER IMPROVEMENTS

PROJECT NUMBER:
21-05-E912

DESIGN: AEG DRAWN: TMS

DATE: March 24, 2022

SHEET **4** OF **19**

File: E:\Projects\Northgate 5th Addition_20-03-P538\Engineering\Phase 4&5\SS 21-05-E912\Sewer.dwg

BENCHMARKS:

BM #1: "□" on south end of headwall, ~40' east of SE corner of Lot 116, Block B, Northgate 5th Addition.
Elev. = 1327.81 (NAVD 88)

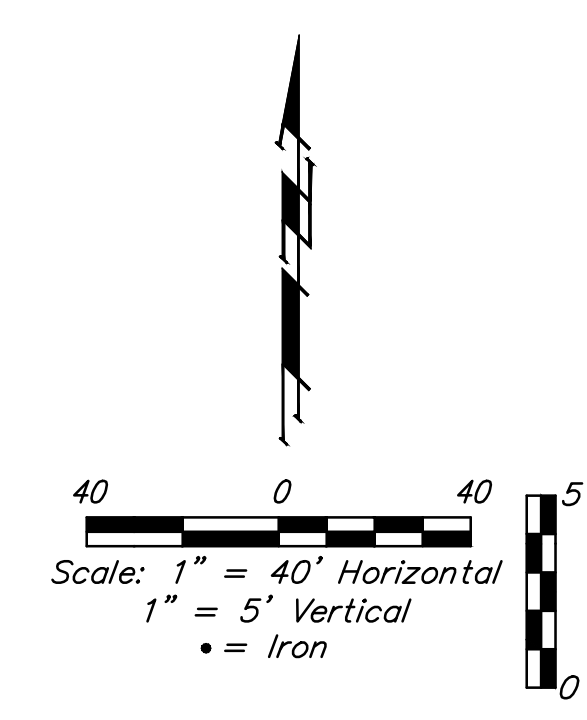
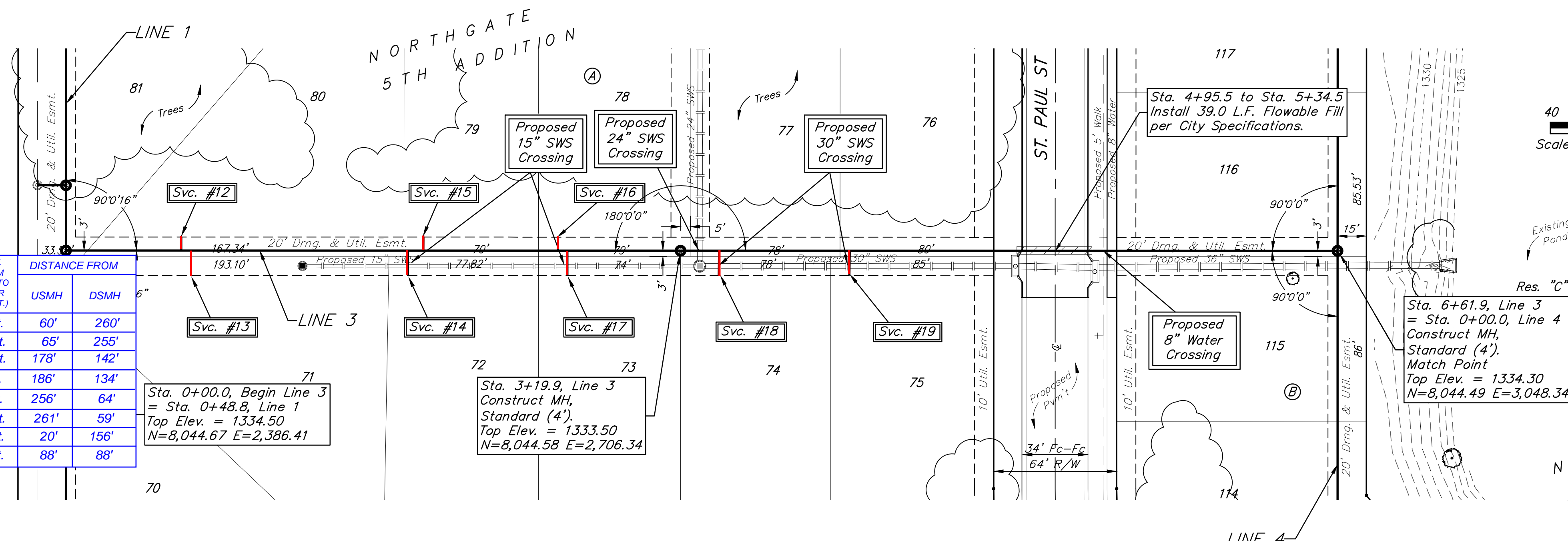
BM #2: Cross on SE corner of curb inlet adjacent to NE corner of Lot 123, Block B, Northgate 5th Addition.
Elev. = 1335.64 (NAVD 88)

UNPLATTED

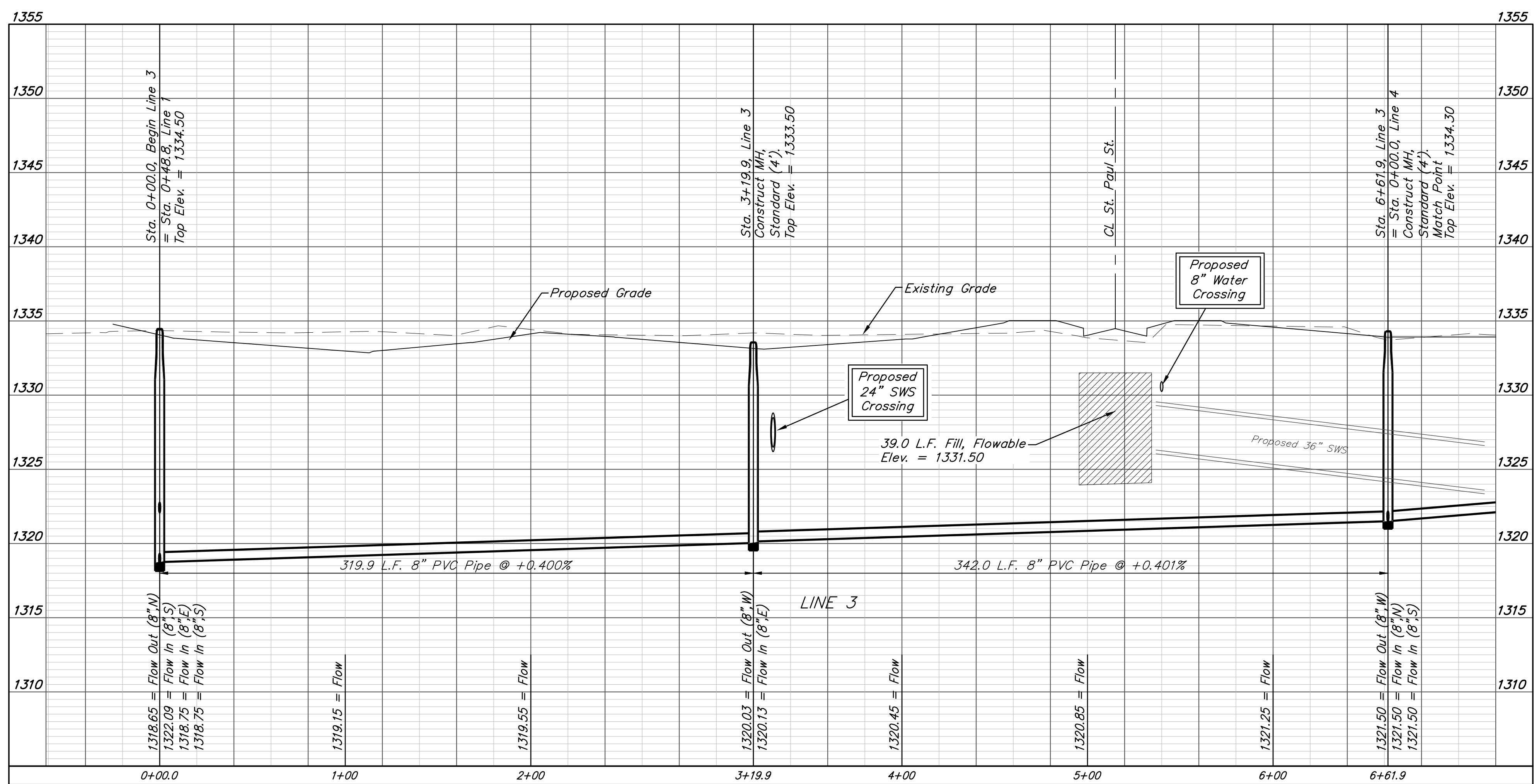
SEWER SERVICE TABLE

NUMBER	TYPE	LOCATION			FOR INFORMATION ONLY		DISTANCE FROM	
		LOT NO.	BLOCK NO.	LINE NO.	STATION \ DIRECTION	APPROXIMATE LENGTH 4" PIPE	VERTICAL	HORIZONTAL
12	8" X 4" Tee W/Riser	80	A	3	0+60.0/Lt.	9.0'	7.0'	7' Lt. 60' 260'
13	8" X 4" Tee W/Riser	71	A	3	0+65.0/Rt.	9.0'	13.0'	13' Rt. 65' 255'
14	8" X 4" Tee W/Riser	72	A	3	1+78.0/Rt.	9.0'	13.0'	13' Rt. 178' 142'
15	8" X 4" Tee W/Riser	79	A	3	1+85.8/Lt.	9.0'	7.0'	7' Lt. 186' 134'
16	8" X 4" Tee W/Riser	78	A	3	2+55.8/Lt.	9.0'	7.0'	7' Lt. 256' 64'
17	8" X 4" Tee W/Riser	73	A	3	2+60.8/Rt.	9.0'	13.0'	13' Rt. 261' 59'
18	8" X 4" Tee W/Riser	77	A	3	3+39.8/Lt.	7.5'	13.0'	13' Lt. 20' 156'
19	8" X 4" Tee W/Riser	76	A	3	4+07.8/Lt.	8.0'	13.0'	13' Lt. 88' 88'

NOTE: Vertical Riser Pipe shall be extended to 2' minimum above ground water elevation and 4' maximum below proposed ground elevation.



Existing trees shall be trimmed/removed ONLY with approval of the Developer. Trimming of overhanging limbs will be permitted only with chainsaws. Trees not in direct conflict with new construction shall remain and be protected from damage. Prior to the start of construction, the Contractor shall schedule an on-site meeting will occur with the Developer to discuss treed areas. All trimming and/or removal shall be included in bid item "Site Clearing".



BAUGHMAN COMPANY
315 Ellis St.
Wichita, KS 67211
316-262-7271
BaughmanCo.com

NORTHGATE 5TH ADD.
Phase 4&5

LINE 3

SANITARY SEWER IMPROVEMENTS

PROJECT NUMBER:
21-05-E912

DESIGN: AEG DRAWN: TMS
DATE: March 24, 2022

SHEET **5** OF **19**

File: E:\Projects\Northgate 5th Addition_20-03-P538\Engineering\Phase 4&5\SS 21-05-E912\Sewer.dwg

BENCHMARKS:

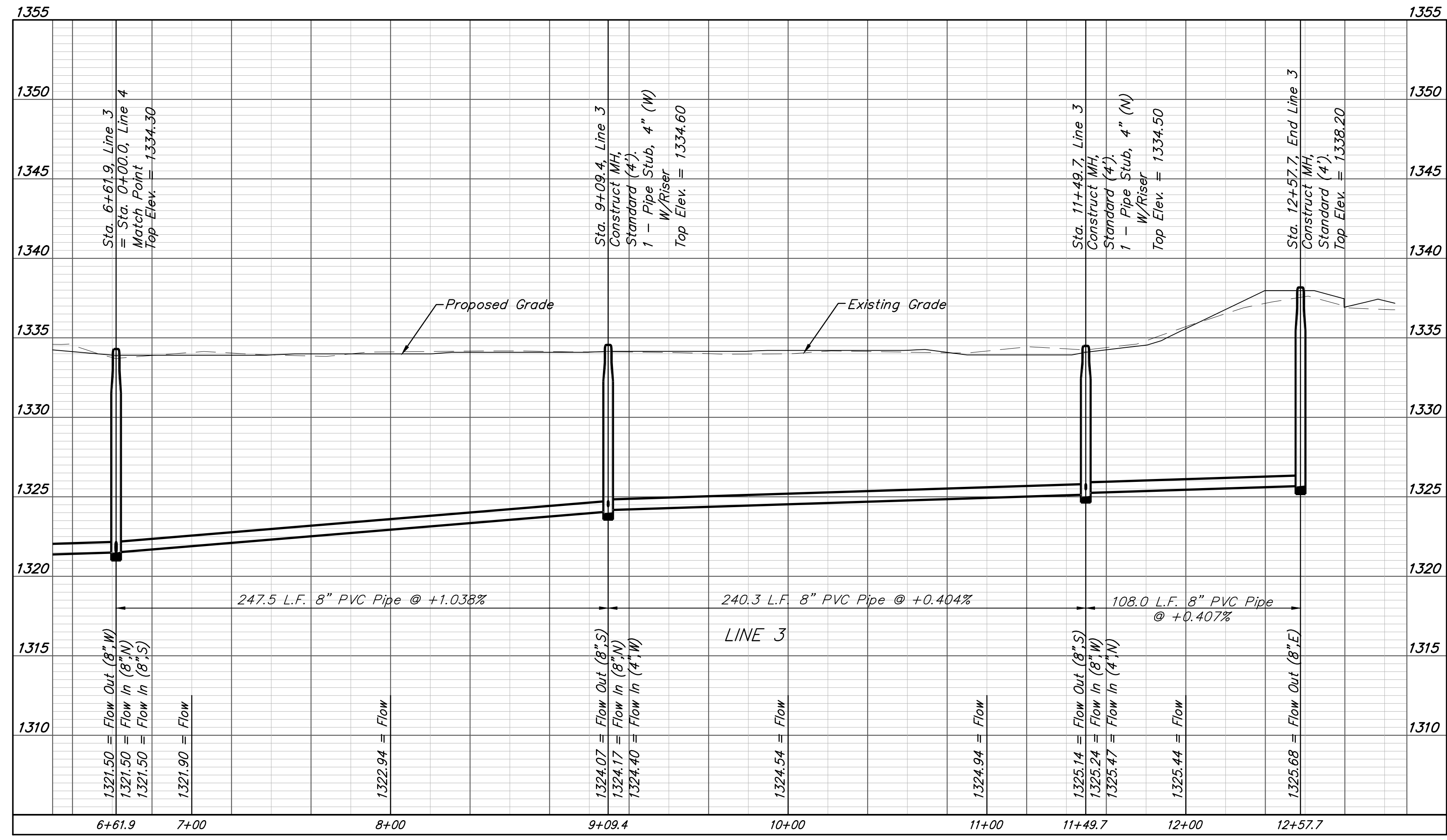
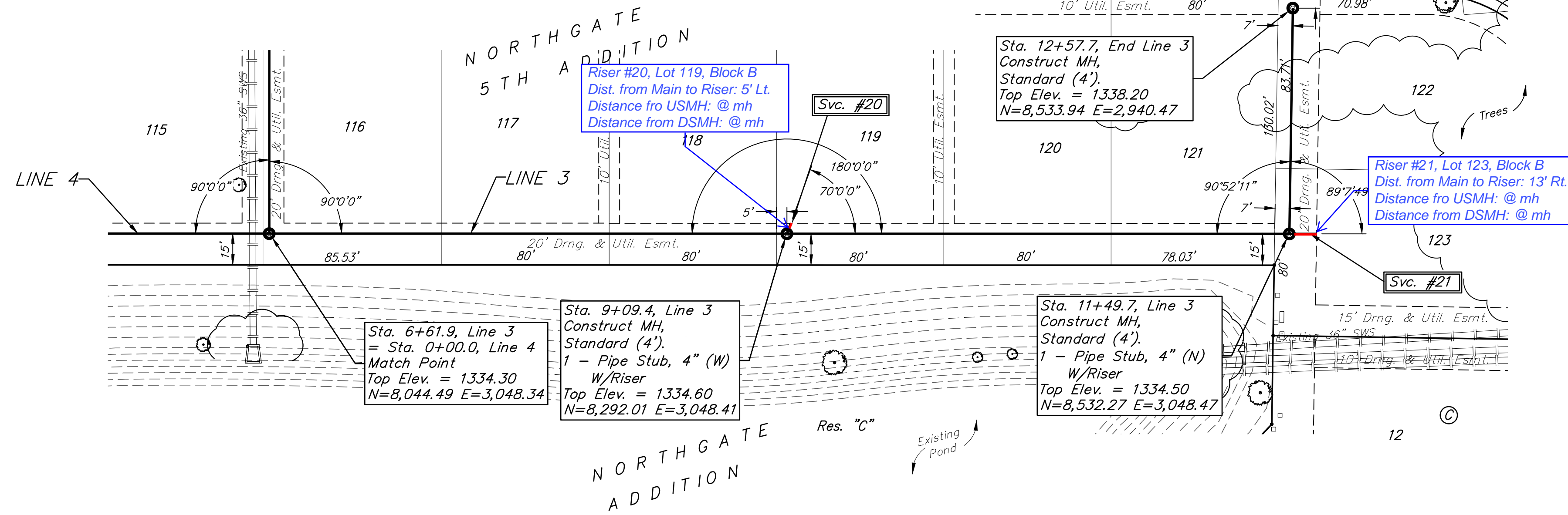
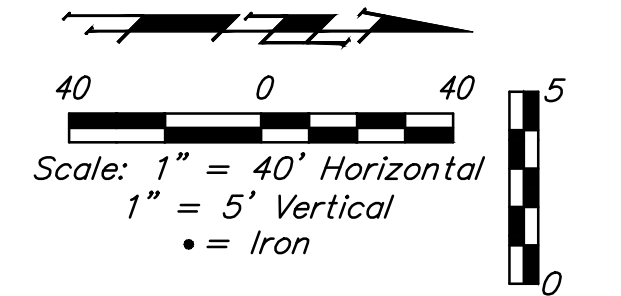
BM #1: "□" on south end of headwall, ~40' east of SE corner of Lot 116, Block B, Northgate 5th Addition.
Elev. = 1327.81 (NAVD 88)

BM #2: Cross on SE corner of curb inlet adjacent to NE corner of Lot 123, Block B, Northgate 5th Addition.
Elev. = 1335.64 (NAVD 88)

SEWER SERVICE TABLE

NUMBER	TYPE	LOCATION				FOR INFORMATION ONLY	
		LOT NO.	BLOCK NO.	LINE NO.	STATION \ DIRECTION	APPROXIMATE LENGTH 4" PIPE	VERTICAL
20	4" Stub W/Riser	119	B	3	9+09.4/Lt.	6.0'	5.3'
21	4" Stub W/Riser	123	B	3	11+49.7/Rt.	8.5'	13.0'

NOTE: Vertical Riser Pipe shall be extended to 2' minimum above ground water elevation and 4' maximum below proposed ground elevation.



BAUGHMAN COMPANY
315 Ellis St.
Wichita, KS 67211
316-262-7271
BaughmanCo.com

NORTHGATE 5TH ADD.
Phase 4&5

LINE 3

SANITARY SEWER IMPROVEMENTS

PROJECT NUMBER:
21-05-E912

DESIGN: AEG DRAWN: TMS

DATE: March 16, 2022

SHEET **6** OF **19**

File: E:\Projects\Northgate 5th Addition_20-03-P538\Engineering\Phase 4&5\SS 21-05-E912\Sewer.dwg

BENCHMARKS:

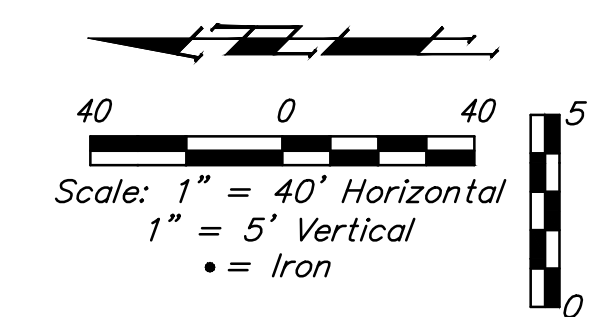
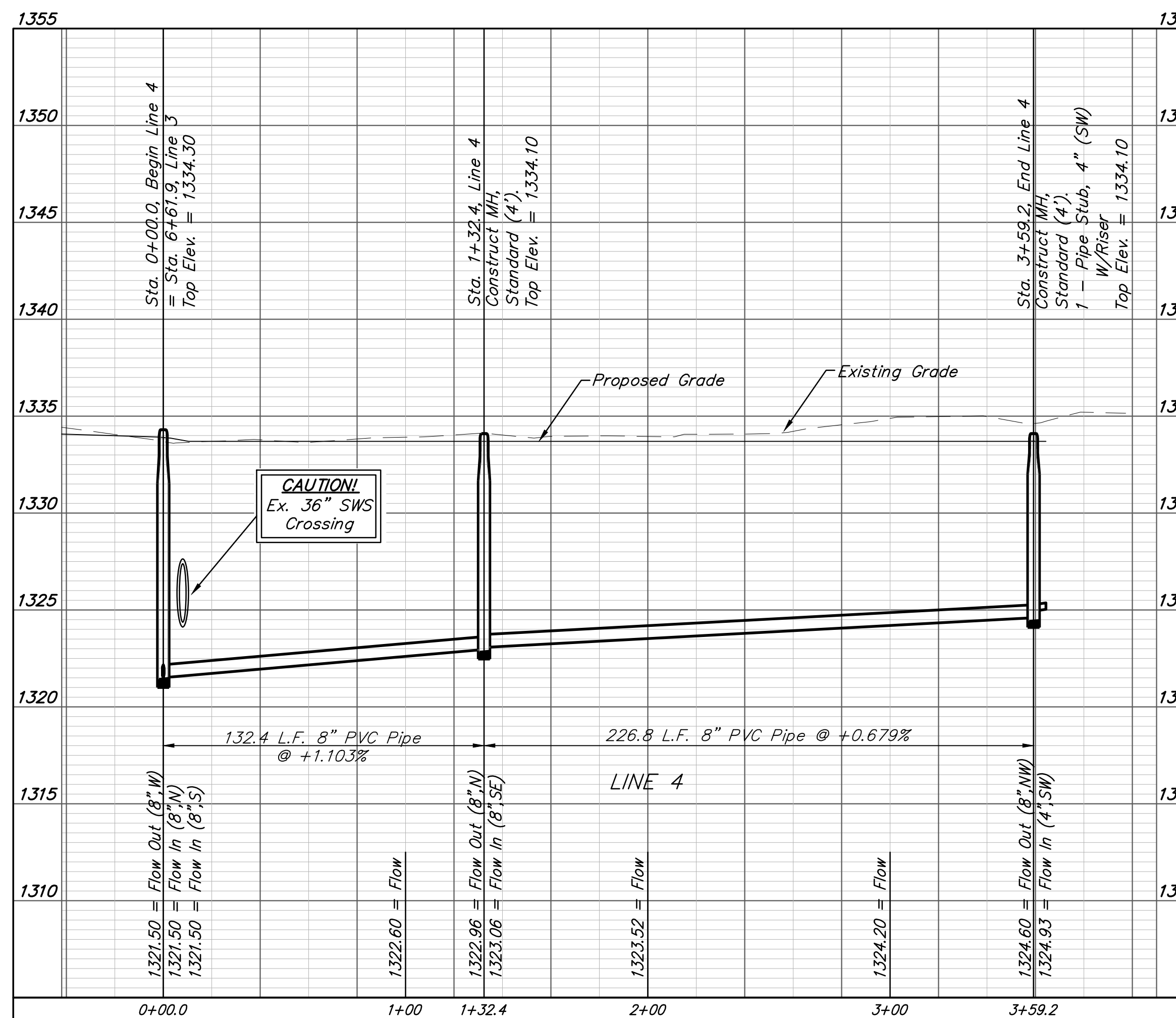
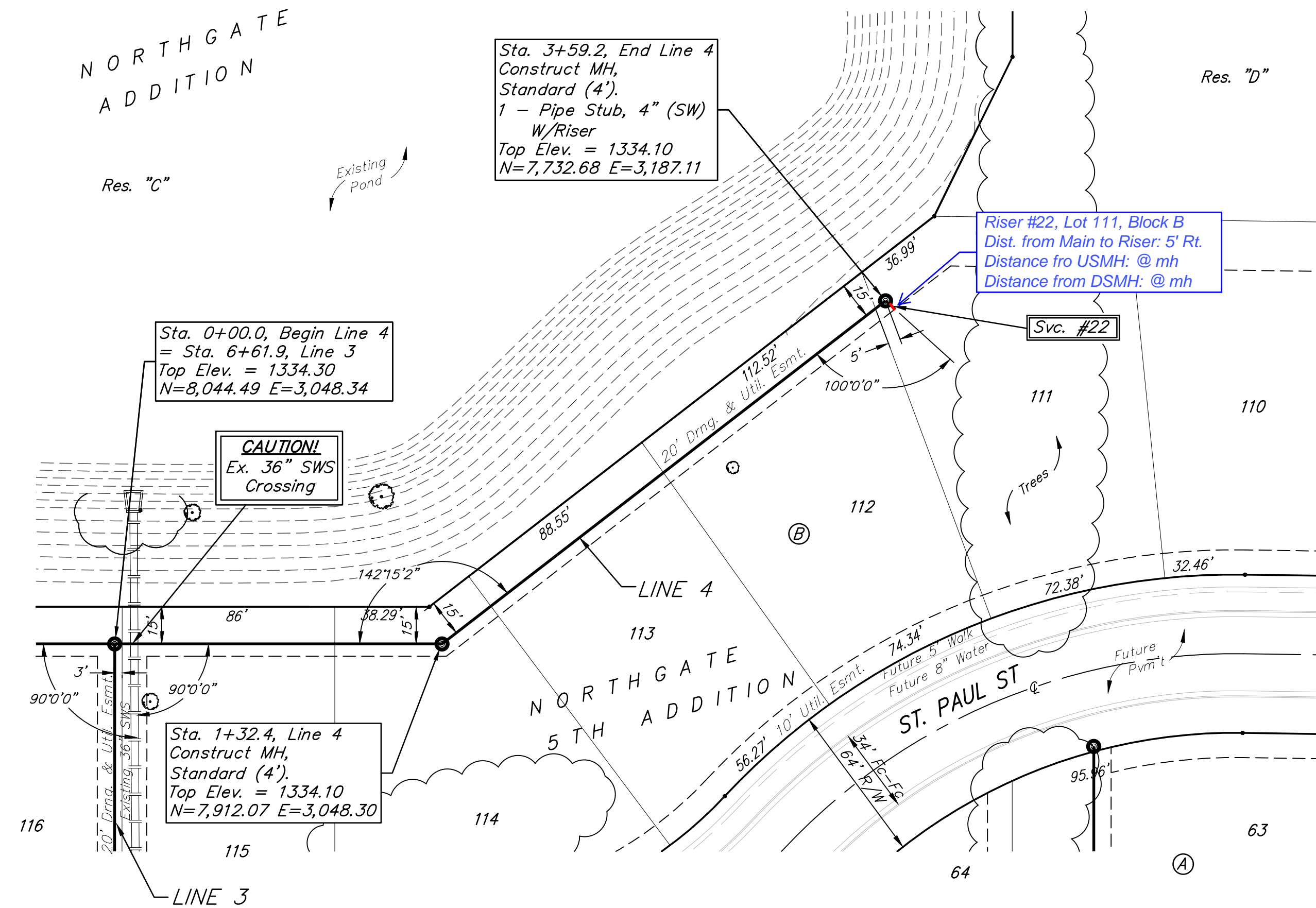
BM #1: "□" on south end of headwall, ~40' east of SE corner of Lot 116, Block B, Northgate 5th Addition.
Elev. = 1327.81 (NAVD 88)

BM #2: Cross on SE corner of curb inlet adjacent to NE corner of Lot 123, Block B, Northgate 5th Addition.
Elev. = 1335.64 (NAVD 88)

SEWER SERVICE TABLE

NUMBER	TYPE	LOCATION			STATION \ DIRECTION	FOR INFORMATION ONLY	
		LOT NO.	BLOCK NO.	LINE NO.		APPROXIMATE LENGTH 4" PIPE	VERTICAL
22	4" Stub W/Riser	111	B	4	3+59.2/Rt.	6.0'	5.0'

NOTE: Vertical Riser Pipe shall be extended to 2' minimum above ground water elevation and 4' maximum below proposed ground elevation.



Professional Engineer Seal: JUSTIN E. GOTTSCHALK, LICENSED PROFESSIONAL ENGINEER, KANSAS, 17919, 03/25/2022.

BAUGHMAN COMPANY
315 Ellis St.
Wichita, KS 67211
316-262-7271
BaughmanCo.com

NORTHGATE 5TH ADD.
Phase 4&5

LINE 4

SANITARY SEWER IMPROVEMENTS

PROJECT NUMBER:
21-05-E912

DESIGN: AEG DRAWN: TMS

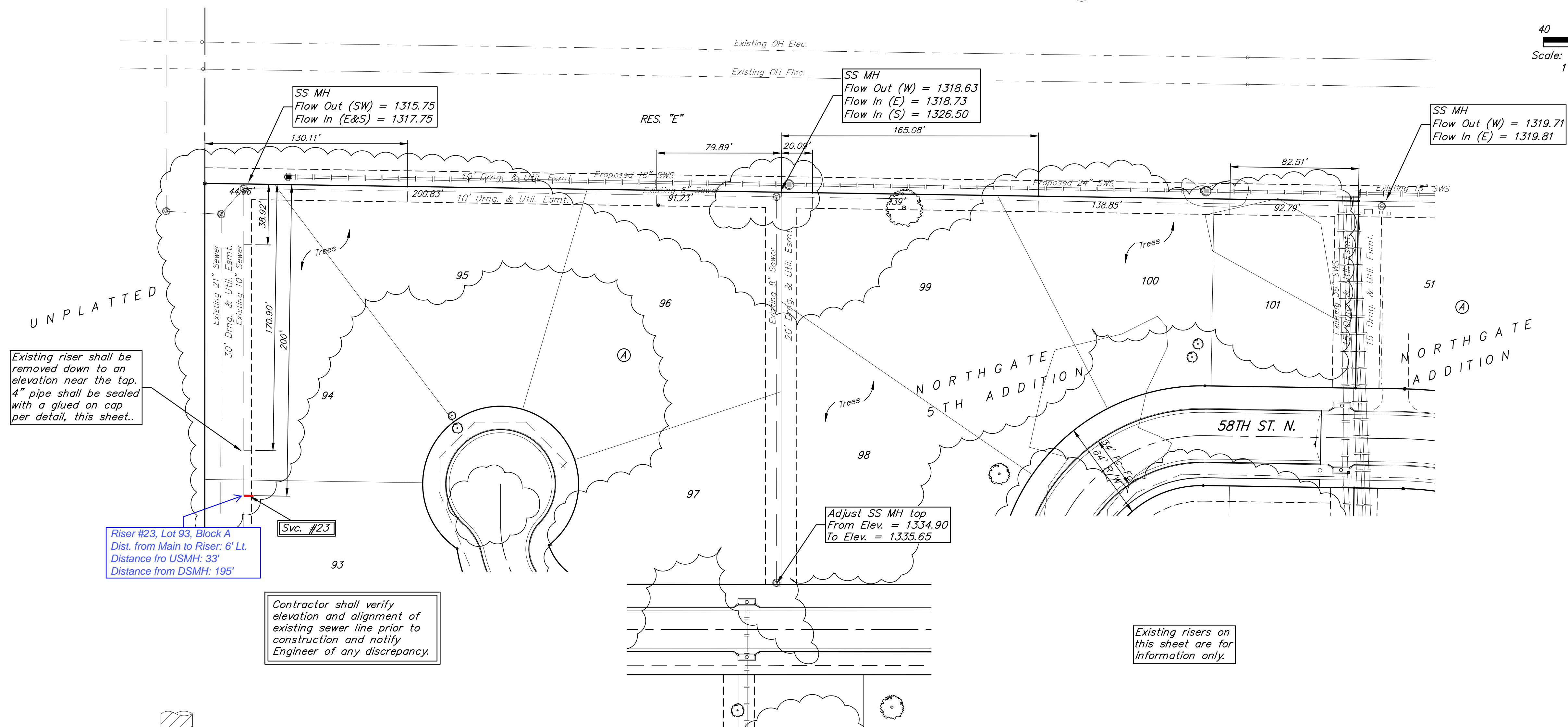
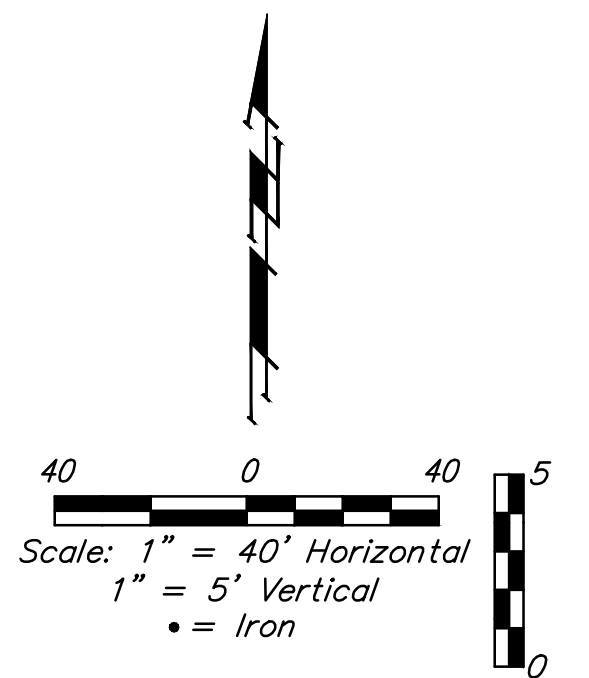
DATE: March 16, 2022

SHEET 7 OF 19

File: E:\Projects\Northgate 5th Addition_20-03-P538\Engineering\Phase 4&5\SS 21-05-E912\Sewer.dwg

BENCHMARKS:
 BM #1: "□" on south end of headwall, ~40' east of SE corner of Lot 116, Block B, Northgate 5th Addition.
 Elev. = 1327.81 (NAVD 88)

BM #2: Cross on SE corner of curb inlet adjacent to NE corner of Lot 123, Block B, Northgate 5th Addition.
 Elev. = 1335.64 (NAVD 88)



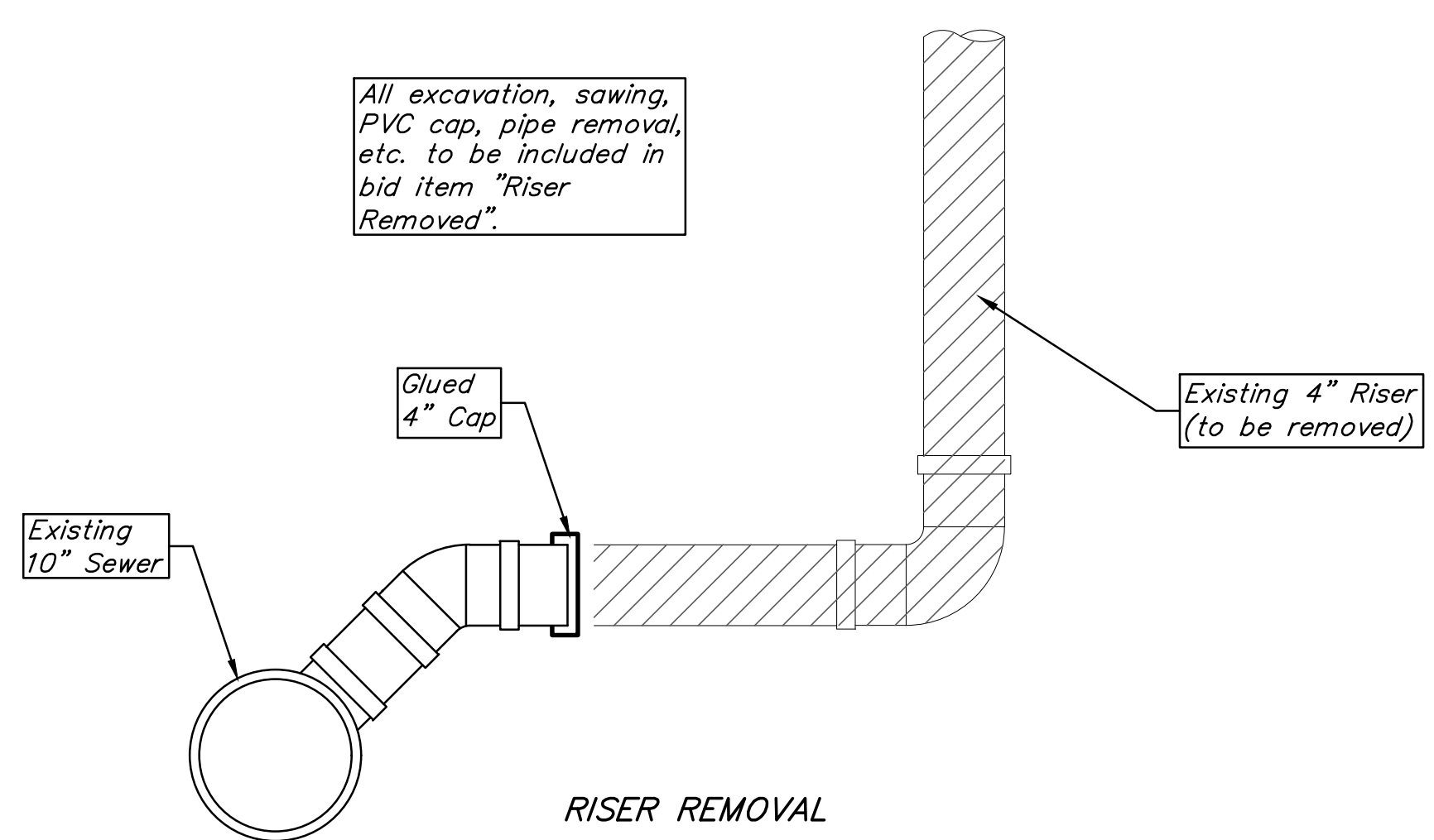
Existing riser shall be removed down to an elevation near the tap. 4" pipe shall be sealed with a glued on cap per detail, this sheet.

Riser #23, Lot 93, Block A
 Dist. from Main to Riser: 6' Lt.
 Distance fro USMH: 33'
 Distance from DSMH: 195'

Contractor shall verify elevation and alignment of existing sewer line prior to construction and notify Engineer of any discrepancy.

Existing risers on this sheet are for information only.

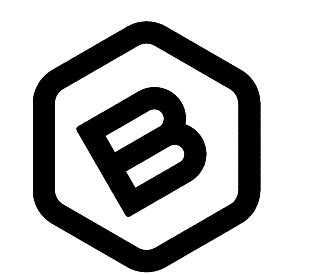
All excavation, sawing, PVC cap, pipe removal, etc. to be included in bid item "Riser Removed".



SEWER SERVICE TABLE

NUMBER	TYPE	LOCATION				FOR INFORMATION ONLY	
		LOT NO.	BLOCK NO.	LINE NO.	STATION \ DIRECTION	APPROXIMATE LENGTH 4" PIPE VERTICAL	HORIZONTAL
23	10" X 4" Tee W/Riser*	93	A	-	-	13.0'	6' -5.0'

NOTE: Vertical Riser Pipe shall be extended to 2' minimum above ground water elevation and 4' maximum below proposed ground elevation. *Saddle tap on existing 10" sewer.



BAUGHMAN COMPANY
 315 Ellis St.
 Wichita, KS 67211
 316-262-7271
 BaughmanCo.com

NORTHGATE 5TH ADD.
 Phase 4&5

ADDITIONAL RISERS

SANITARY SEWER IMPROVEMENTS

PROJECT NUMBER:
 21-05-E912

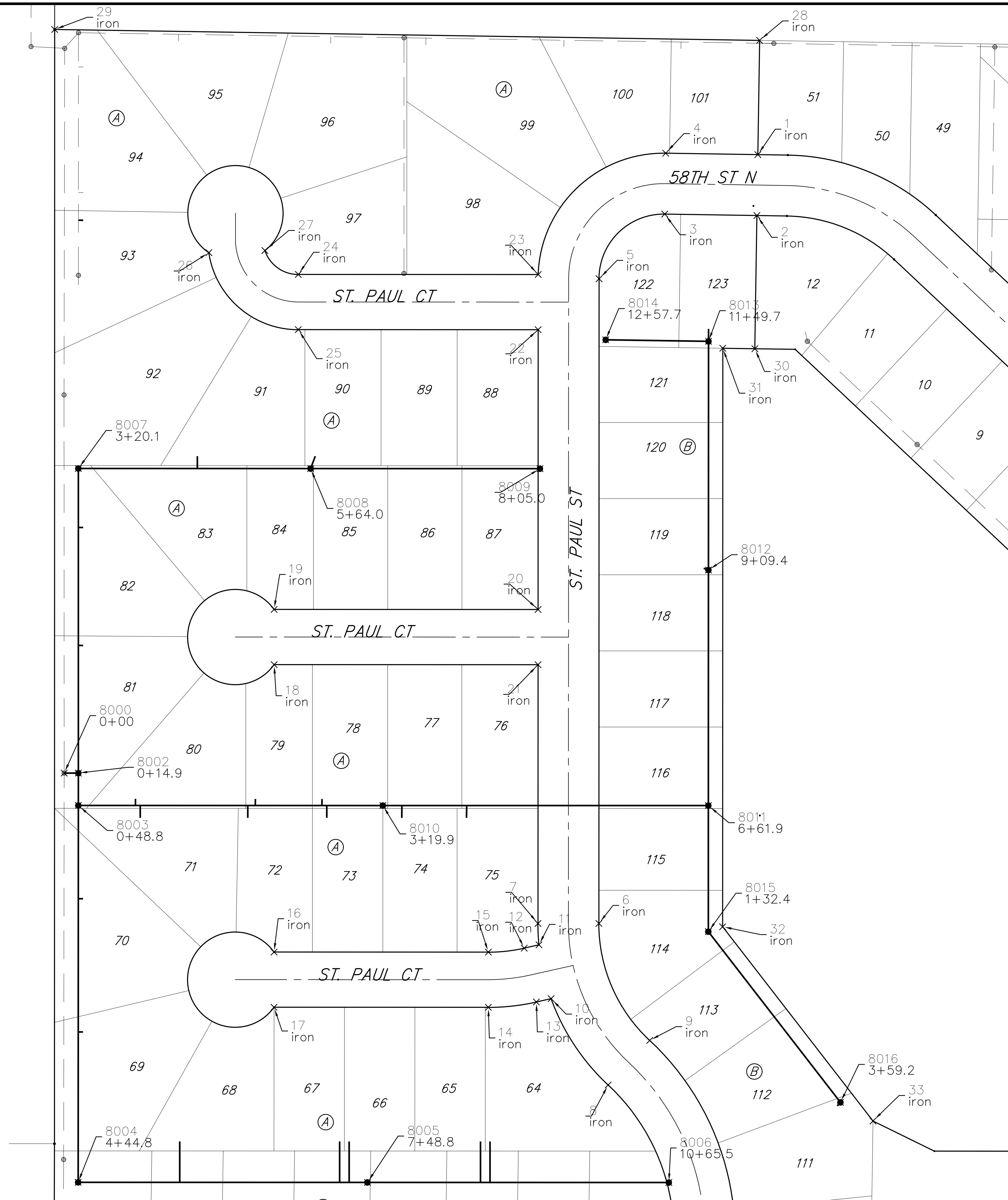
DESIGN: AEG DRAWN: TMS
 DATE: March 16, 2022

SHEET **8** OF **19**

File: E:\Projects\Northgate 5th Addition_20-03-P538\Engineering\Phase 4&5\SS 21-05-E912\Sewer.dwg

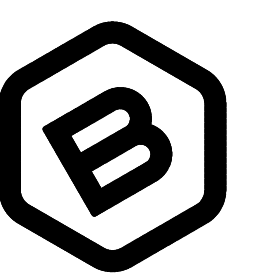
IRONS

Point Table			
Point #	Northing	Easting	Raw Description
1	8728.49	3100.31	iron
2	8664.50	3099.32	iron
3	8665.99	3002.54	iron
4	8729.99	3003.53	iron
5	8598.02	2933.49	iron
6	7920.65	2933.30	iron
7	7920.67	2869.30	iron
8	7750.96	2943.05	iron
9	7797.76	2986.70	iron
10	7841.66	2883.14	iron
11	7898.24	2870.38	iron
12	7894.74	2854.86	iron
13	7838.16	2867.63	iron
14	7832.55	2817.17	iron
15	7890.55	2817.19	iron
16	7890.61	2592.02	iron
17	7832.61	2592.01	iron
18	8192.61	2592.11	iron
19	8250.61	2592.12	iron
20	8250.54	2869.39	iron
21	8192.54	2869.38	iron
22	8544.54	2869.48	iron
23	8602.54	2869.57	iron
24	8602.61	2617.49	iron
25	8544.61	2617.48	iron
26	8625.51	2523.55	iron
27	8627.70	2582.47	iron
28	8848.48	3102.17	iron
29	8859.93	2361.58	iron
30	8524.51	3097.16	iron
31	8525.03	3063.47	iron
32	7917.20	3063.30	iron
33	7713.06	3221.26	iron



SANITARY SEWER

Point Table			
Point #	Northing	Easting	Raw Description
8000	8078.62	2371.53	0+00
8002	8078.62	2386.42	0+14.9
8003	8044.67	2386.41	0+48.8
8004	7648.67	2386.21	4+44.8
8005	7648.59	2690.18	7+48.8
8006	7648.50	3006.85	10+65.5
8007	8398.67	2386.48	3+20.1
8008	8398.60	2630.44	5+64.0
8009	8398.54	2871.44	8+05.0
8010	8044.58	2706.34	3+19.9
8011	8044.49	3048.34	6+61.9
8012	8292.01	3048.41	9+09.4
8013	8532.27	3048.47	11+49.7
8014	8533.94	2940.47	12+57.7
8015	7912.07	3048.30	1+32.4
8016	7732.68	3187.11	3+59.2



BAUGHMAN COMPANY
 315 Ellis St.
 Wichita, KS 67211
 316-262-7271
 BaughmanCo.com

NORTHGATE 5TH ADD.
 Phase 4&5

COORDINATE SHEET

SANITARY SEWER IMPROVEMENTS

PROJECT NUMBER:
 21-05-E912

DESIGN: AEG DRAWN: TMS

DATE: March 16, 2022

SHEET **18** OF **19**