

# GENERAL NOTES:

1. Contractor will be required to provide notice to utility companies a minimum of seventy-two (72) hours prior to any excavation, as follows:

Kansas One-Call 687-2470

The Contractor must notify the following in case of an emergency:

- Cox Communications 262-4270
- Kansas Gas Service 1-888-482-4950
- Energry 383-8650
- Aquila Energy 1-800-303-0357
- AT&T 268-2245
- City of Wichita Water Dept. 268-4563
- City of Wichita Sewer Maint. 268-4024
- City of Wichita Storm Sewer Maint. 268-4090
- City of Wichita Traffic Maint. 268-4034
- Conoco Phillips Pipeline Co. 1-877-267-2290
- Southern Star Pipeline Co. 529-6600
- Kinder-Morgan Pipeline Co. 1-888-844-5658

2. Utility service lines, poles, valve boxes, meters, and etcetera are to be adjusted as necessary by others prior to construction unless the plans specifically call for their adjustment by the Contractor or unless the plans specifically identify a utility to be adjusted by its owner during construction. Existing utilities and their location, as shown on the plans, represent the best information obtainable for design. The Contractor will be required to work around existing utilities within the right-of-way which do not conflict with proposed construction.

3. Rubble from the removal of miscellaneous structures and excess excavation which is to be wasted shall be disposed of on sites to be provided by the Contractor. These sites shall be approved by the Engineer as to suitability, appearance and site location. Locations, in the opinion of the Engineer, that will leave an unsightly appearance will not be approved. All disposal sites must be approved by the Kansas Department of Health and Environment. Material either stockpiled or disposed of in a flood plain would require a Kansas State Board of Agriculture permit. Any material dumped in waters of the United States or wetlands is subject to U.S. Corps. of Engineers permitting regulations. Any material buried or stockpiled beyond approved construction limits would require additional archaeological investigations unless buried in a previously approved borrow location.

4. Trees and shrubs in public right-of-way which are in direct conflict with proposed new construction shall be removed by the Contractor with the Engineer's approval. Trees and shrubs which are not in direct conflict with proposed new construction shall be saved and protected from damage.

5. The Contractor shall give all property owners and/or tenants of developed property abutting the construction of this project a minimum of ten (10) days notice prior to start of construction.

6. The Contractor shall be responsible for preserving property irons. The Contractor will be required to re-establish any property irons which are damaged or destroyed by his construction operations. Such irons shall be re-established by a licensed land surveyor in accordance with state laws.

7. All existing and proposed erosion control measures including silt fencing, erosion control mat, straw bales, inlet barriers, and const. entrance shall be maintained throughout construction by the contractor and until project is accepted by the City of Wichita. The on-site engineer shall complete weekly reports on the status of erosion control measures. The contractor shall be required to comply with maintenance and/or replacement of erosion control measures as determined by the on-site engineer until project is accepted by City of Wichita. Maintenance and/or replacement of erosion control measures to be paid by L.S. bid item "Maintain Existing BMP's."

8. All excess excavation shall be removed from site.

9. All areas disturbed during construction shall be seeded as follows (Temporary Seeding):

Seed: Rye grass (PLS)--5 lbs./1000 Sq. Ft.

All costs associated with seeding shall be included in bid item "Seeding".

10. Trees and shrubs in the work area which are in direct conflict with proposed new construction shall be removed by the Contractor ONLY with the City approval. Trees and shrubs which are not in direct conflict with proposed new construction shall be saved and protected from damage. If trimming is necessary, a chainsaw shall be used. Breaking limbs with equipment will not be allowed. An on-site pre-construction meeting will occur prior to any construction to discuss tree removal, tree protection, and tree trimming.

11. Contractor shall divert 54" Sewage flow if necessary from upstream manhole to pump station wet well to allow connection for the 36" pipe to Station 0+00 MH. Contractor shall present Pumping Bypass Plan of Operations to the City of Wichita for approval prior to proceeding. MH at 0+00 shall be relined as necessary to provide protection at the MH. Cost of relining shall be incidental to Bid Item Connect to Existing MH.

12. Contractor shall also pump 18" SS from upstream MH on Tyler Rd to wet well to connect the 18" Sanitary Sewer line into the Junction MH at Sta. 0+14.35. Contractor shall install Temporary Security Fence with a gate at West edge existing fence perimeter. Cost of Temporary pumping of the 18" SS is to be incidental to 8'x11' R.C. Manhole Bid Item.

13. Maintain a minimum of 10-foot horizontal separation between all Water lines (Mains, Services and Fire Hydrants) and all Sanitary Sewer lines (Main, Services and Manholes) at crossings. All separation distances are to be measured from edge-to-edge, at the closest point.

14. Maintain a minimum of 2-foot vertical separation between all Water lines (Main and Services) and all gravity Sanitary Sewer lines (Mains, Services and Manholes) at crossings. All separation distances are to be measured from edge-to-edge, at the closest point.

15. Maintain a minimum of 2-foot vertical separation between all Water lines (Main and Services) and all pressurized Sanitary Sewer lines (Force Main and Services) at crossings. Water lines must always be placed above pressurized Sanitary Sewer lines where they cross. All separation distances are to be measured from edge-to-edge, at the closest point.

16. All proposed Sanitary Sewer MH Lids need to be Bolt down type and be water tight.

17. A Traffic Control Plan on Yosemite Dr must be submitted and approved by the City Traffic Engineer, Mike Armour at traffic@wichita.gov before Construction can begin. The Contractor shall be responsible for all Traffic Control measures to facilitate construction. All Construction Zone Markings and Signage shall conform to the latest version of the Manual on Uniform Traffic Control Devices (MUTCD) as published by the US Dept. of Transportation, Federal Highway Administration. All costs associated with Construction Markings and Signage shall be the Contractors responsibility.

# Phase IV SANITARY SEWER IMPROVEMENTS

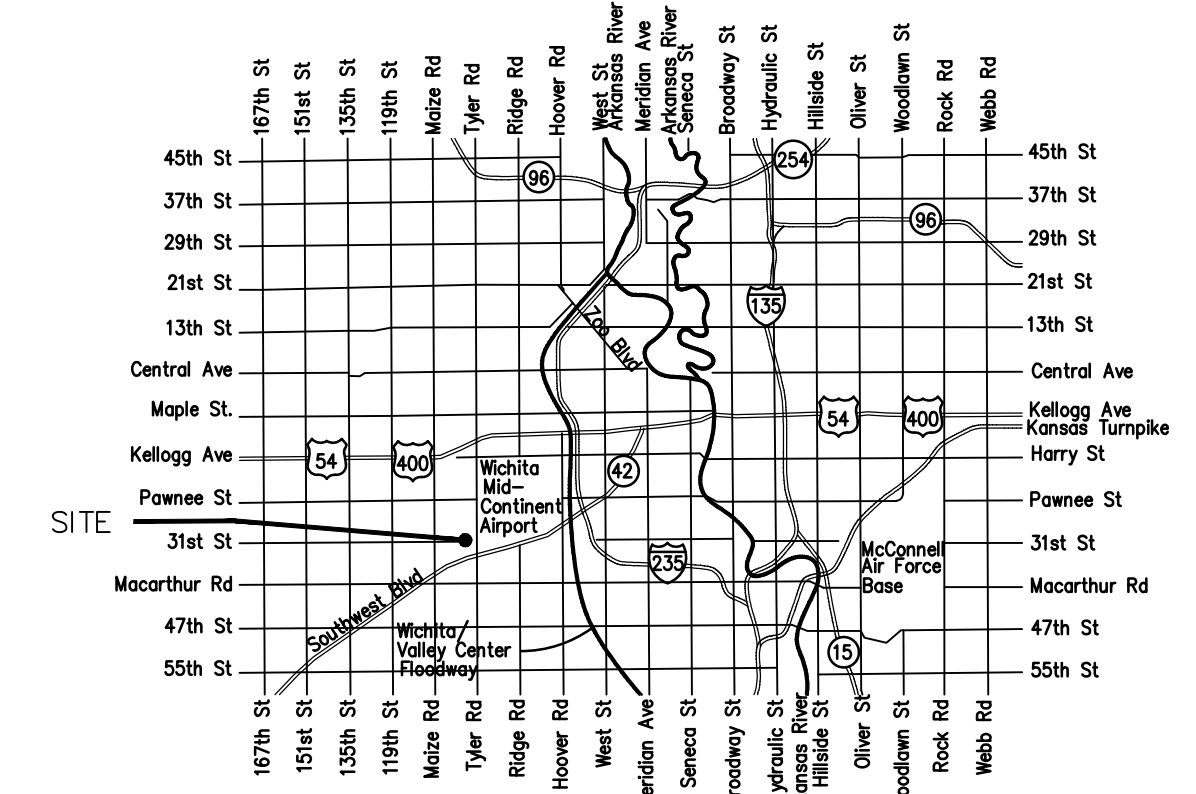
## SCHULTE JOHNSON 2ND ADDITION

### CITY OF WICHITA, KANSAS

Gary Janzen, P.E. City Engineer  
Project Number 468-2022-014327  
ORG Code Number: 53200120  
Munis Number: S0028

SS As-Builts  
Inspector: Shawn Stripling  
Contractor: Nowak Construction  
Superintendent: Dave Stareck  
Company: City of Wichita

S. Lowe - City of Wichita, Field Project Engineer  
Release Date: 3/6/2023  
Completion Date:  
: apr 3/7/2023

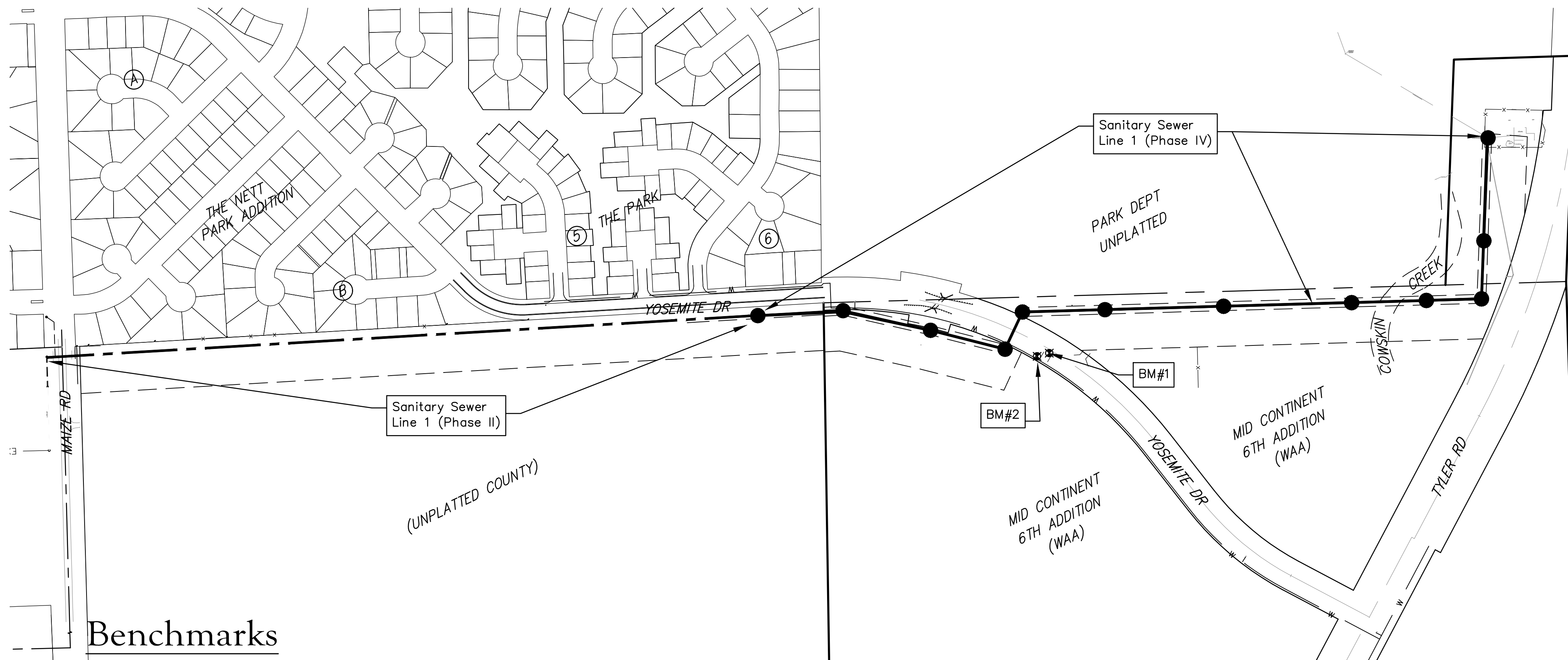


Vicinity Map

## Sheet Index

Title Sheet	1
Precast SS Manhole Detail	2
Manhole Frame & Cover Detail	3
SS Details	4-6
Line 1 Plan and Profile	7-13
Erosion Control Plan	14
Erosion Control BMP Details	15-19
Coordinate Sheet	20
Copy of Plat	21

\*Current Sanitary Sewer Control Details are available at City of Wichita web site at <http://www.wichita.gov/PWU/StandardsConstruction/Forms/WebPageStandardsConstruction.aspx>

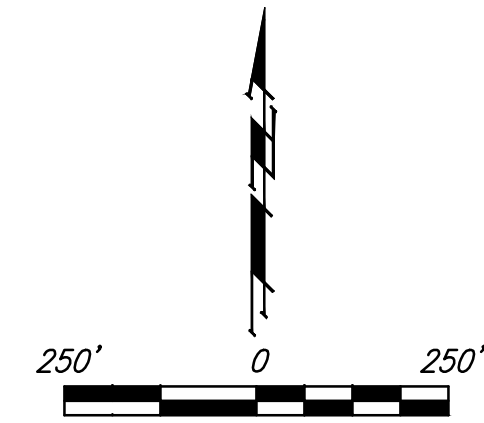


## Benchmarks

BENCHMARKS:

BM#1  
Mag Disk in edge of Asphalt,  
755± E. of Cntr Sec. 5, TWP. 28-S, R-1-W &  
188± S. of N. line, SE1/4,  
Sec. 5, TWP. 8-S, R-1-w.  
Elev. = 1305.61 NAVD88

BM#2  
Opus Adjust Begin in ground S of Fire Hydrant.  
713.64± E. of Cntr Sec. 5, TWP. 28-S, R-1-W &  
198.59± S. of N. line, SE1/4,  
Sec. 5, TWP. 8-S, R-1-w.  
Elev. = 1304.38 NAVD88



Baughman Company, P.A. 315 Ellis St. Wichita, KS 67211 P 316-262-7271 F 316-262-0149  
ENGINEERING | SURVEYING | PLANNING | LANDSCAPE ARCHITECTURE



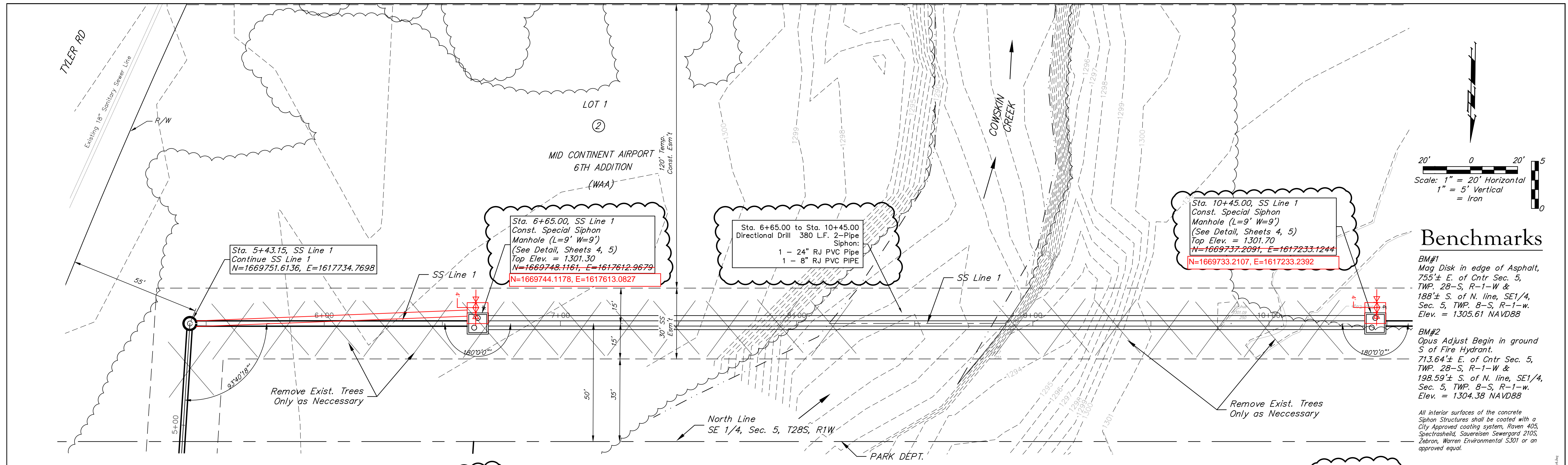
Construction Engineering Division  
1801 S. McLean Blvd., Suite B  
Wichita KS, 67213  
(316) 268-4027

## Plan Deviations/Changes

**Project Name:** SS Improv Ph IV to serve Schulte Johnson 2nd Addn  
**Project Location:** south of Pawnee Avenue, east of Maize Road  
**Project No:** 468-2022-014327  
**MUNIS No:** S0028/53200120  
**Contractor:** Nowak Construction Co., Inc.  
**Inspector:** Shawn Stripling

The structure at Sta:0+14.35 had to be rearranged due to a 54" line that wasn't on the plans.  
Siphon manholes at Sta:6+65 and Sta:10+45 were both shifted to the South by 4'  
24" and 8" RJ pipe was shifted 4' South between Sta:6+65 and Sta:10+45.  
Changed the pipe percent from 1.863% to 1.949%



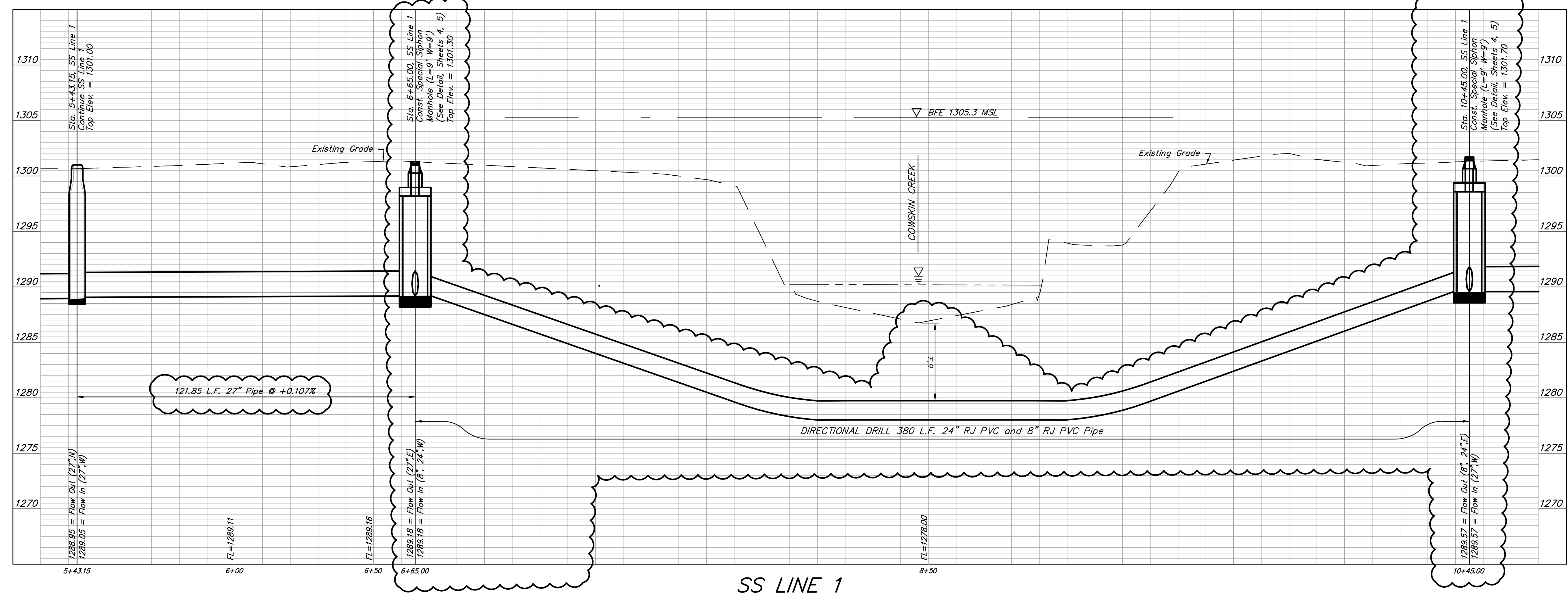


### Benchmarks

BM#1  
Mag Disk in edge of Asphalt,  
755'± E. of Cntr Sec. 5,  
TWP. 28-S, R-1-W &  
188'± S. of N. line, SE1/4,  
Sec. 5, TWP. 8-S, R-1-W.  
Elev. = 1305.61 NAVD88

BM#2  
Opus Adjust Begin in ground  
S of Fire Hydrant.  
713.64'± E. of Cntr Sec. 5,  
TWP. 28-S, R-1-W &  
198.59'± S. of N. line, SE1/4,  
Sec. 5, TWP. 8-S, R-1-W.  
Elev. = 1304.38 NAVD88

All interior surfaces of the concrete  
Siphon Structures shall be coated with a  
City Approved coating system, Raven 405,  
Spectrasheild, Sovereign Sewergard 2105,  
Zelbron, Warren Environmental S301 or an  
approved equal.



Rev. 9/13/22 Moved Siphon MH 4 South due to Field Bore Issues

NEW  
8/7/22  
8/19/22

NEW  
8/7/22  
8/19/22

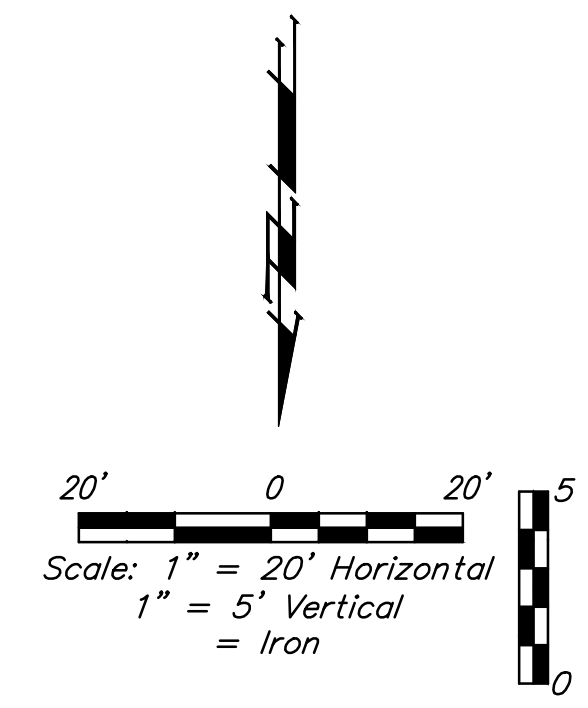
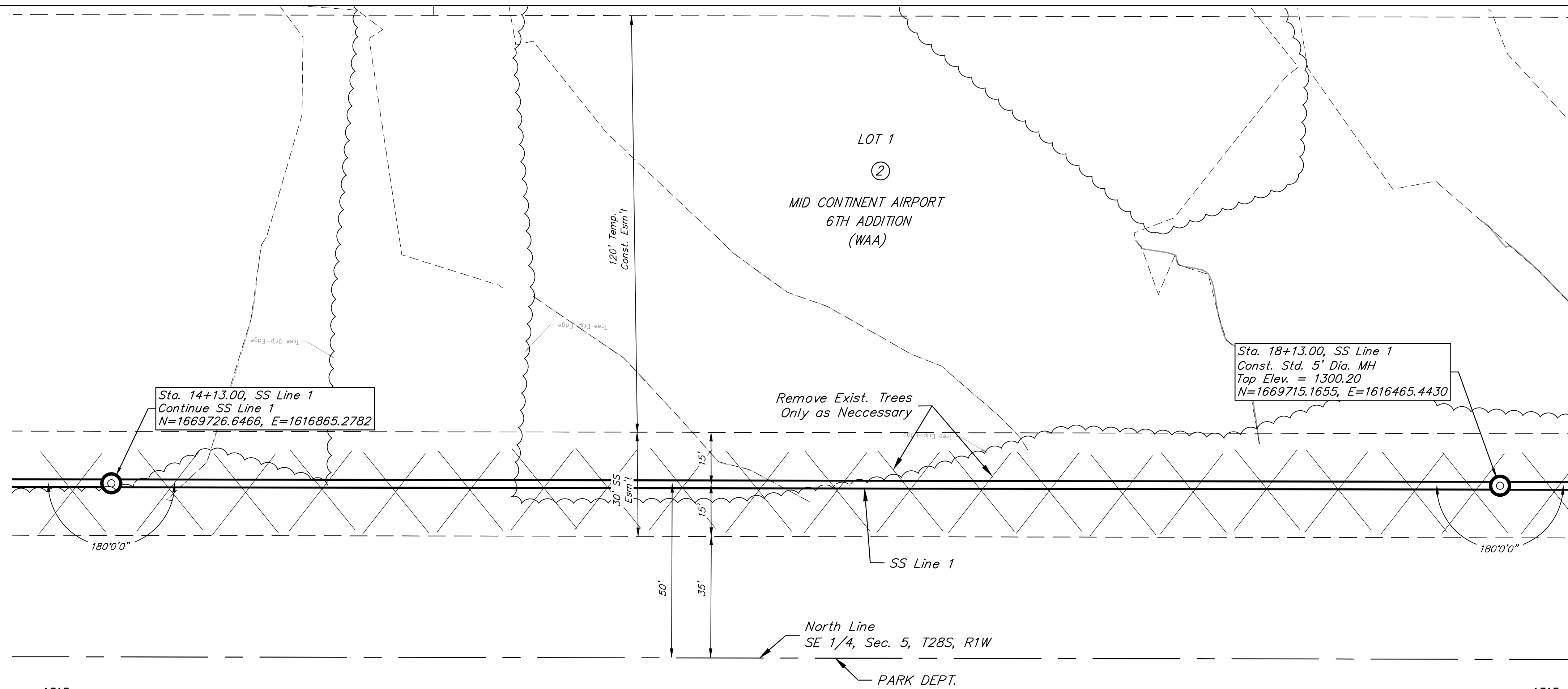
NEW  
8/7/22  
8/19/22

8  
21

Schutte-Johnson 2nd Addition  
**SS LINE 1**  
Sanitary Sewer Line Improvements

**B** Baughman Company, P.A.  
1515 E. Main St., Wichita, KS 67211 P: 316-262-2271 F: 316-262-0149  
DANIELSON@BAUGHMANCOMPANY.COM J. DANSON@BAUGHMANCOMPANY.COM  
Baughman

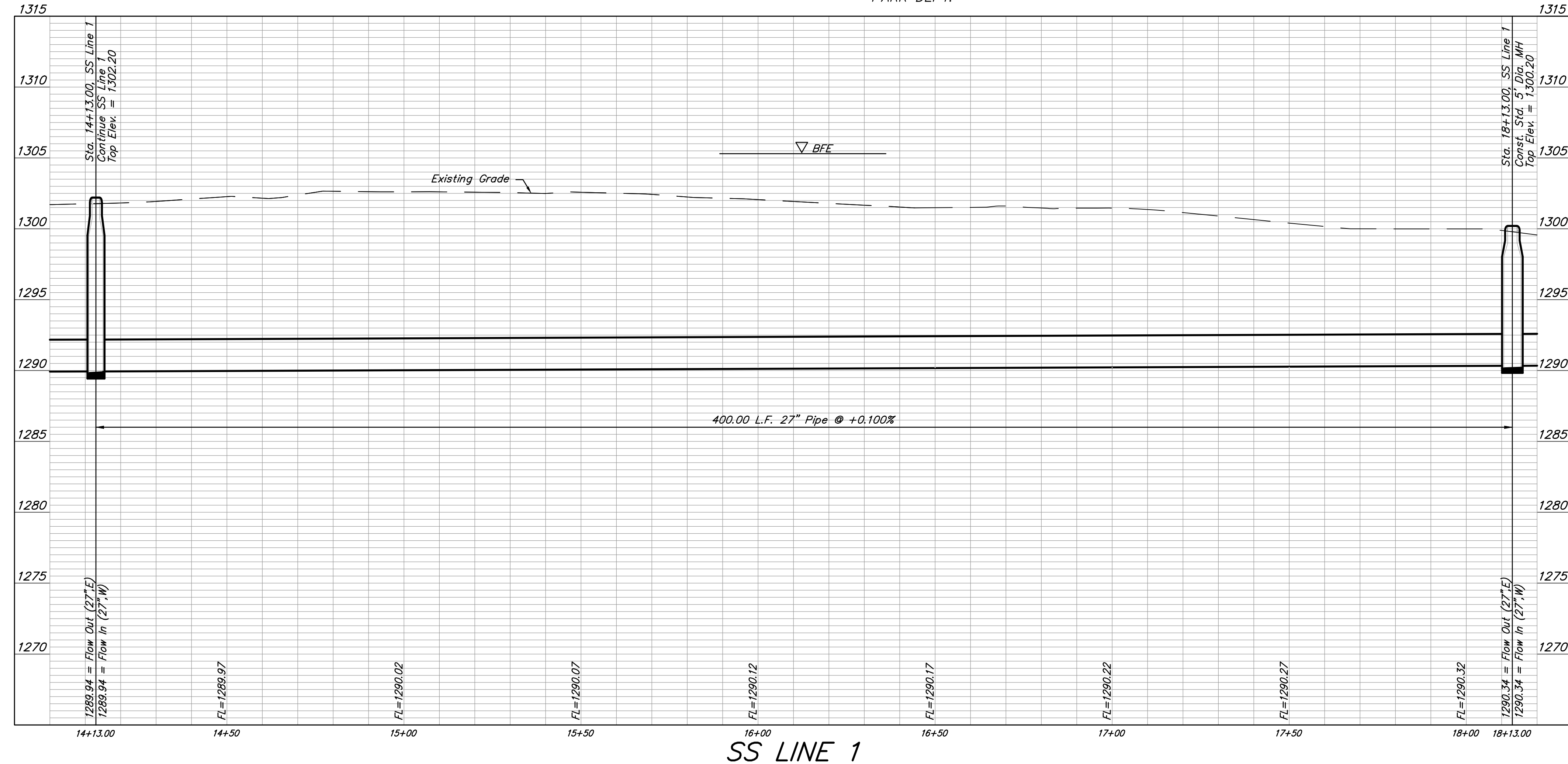




### Benchmarks

**BM#1**  
Mag Disk in edge of Asphalt,  
755'± E. of Cntr Sec. 5,  
TWP. 28-S, R-1-W &  
188'± S. of N. line, SE1/4,  
Sec. 5, TWP. 8-S, R-1-w.  
Elev. = 1305.61 NAVD88

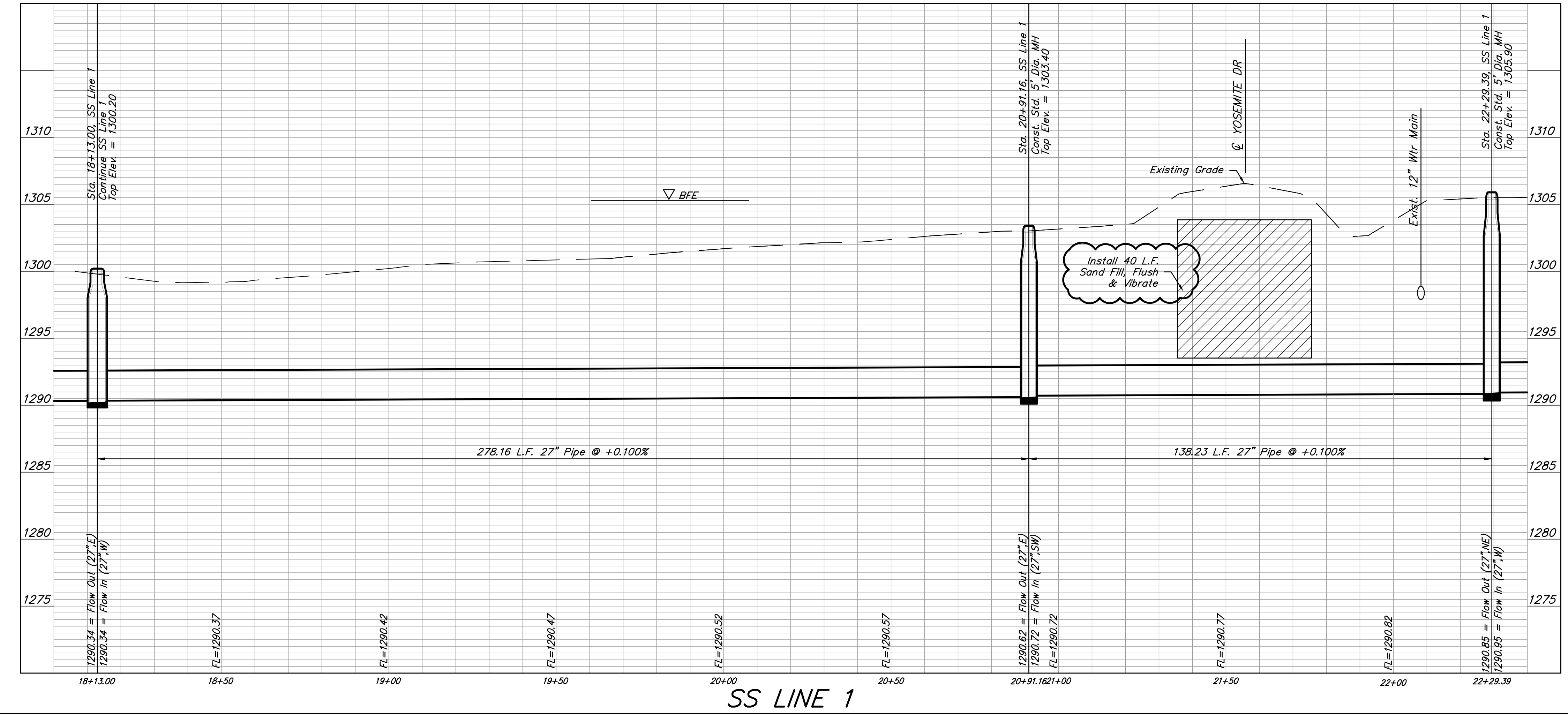
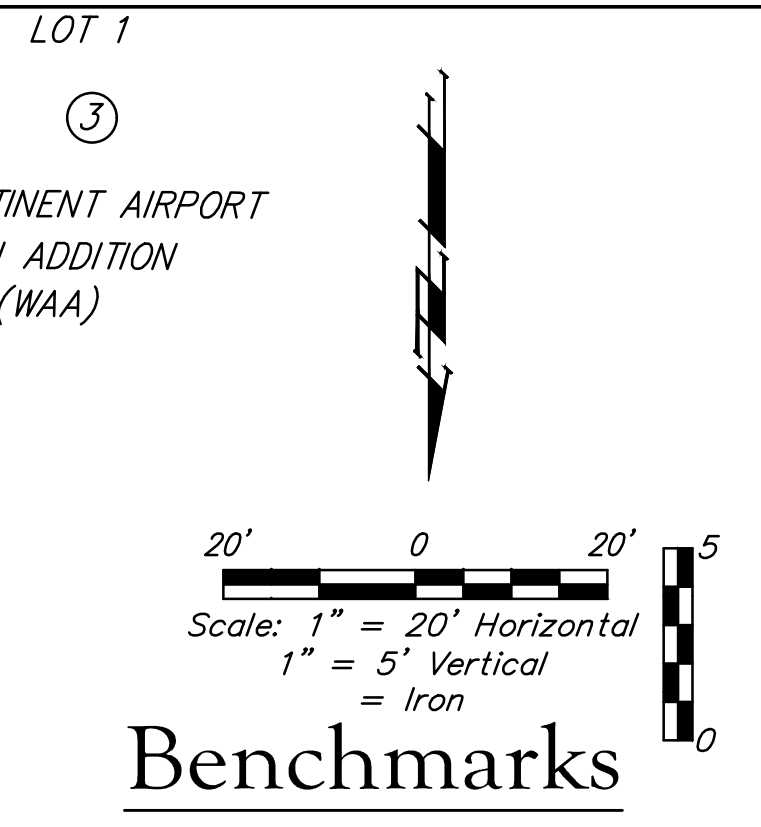
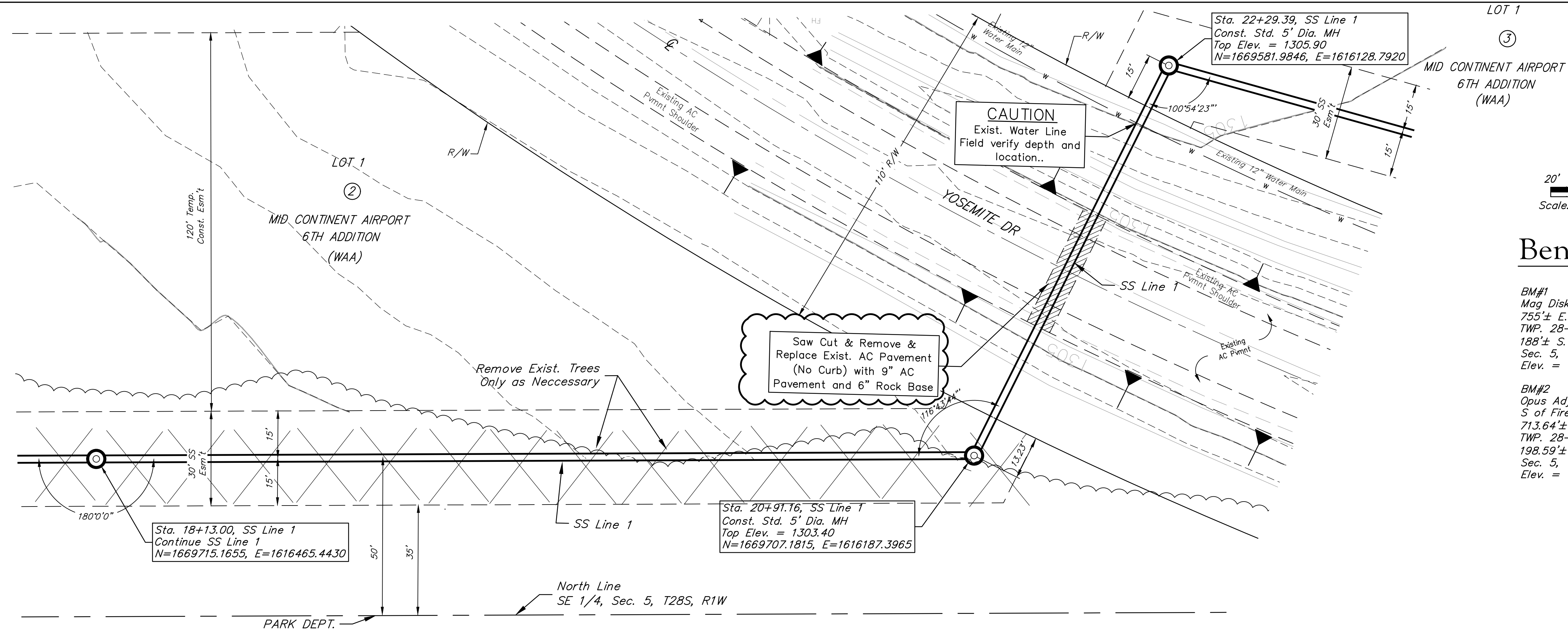
**BM#2**  
Opus Adjust Begin in ground  
S of Fire Hydrant.  
713.64'± E. of Cntr Sec. 5,  
TWP. 28-S, R-1-W &  
198.59'± S. of N. line, SE1/4,  
Sec. 5, TWP. 8-S, R-1-w.  
Elev. = 1304.38 NAVD88

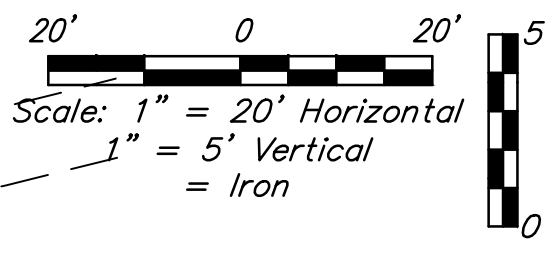
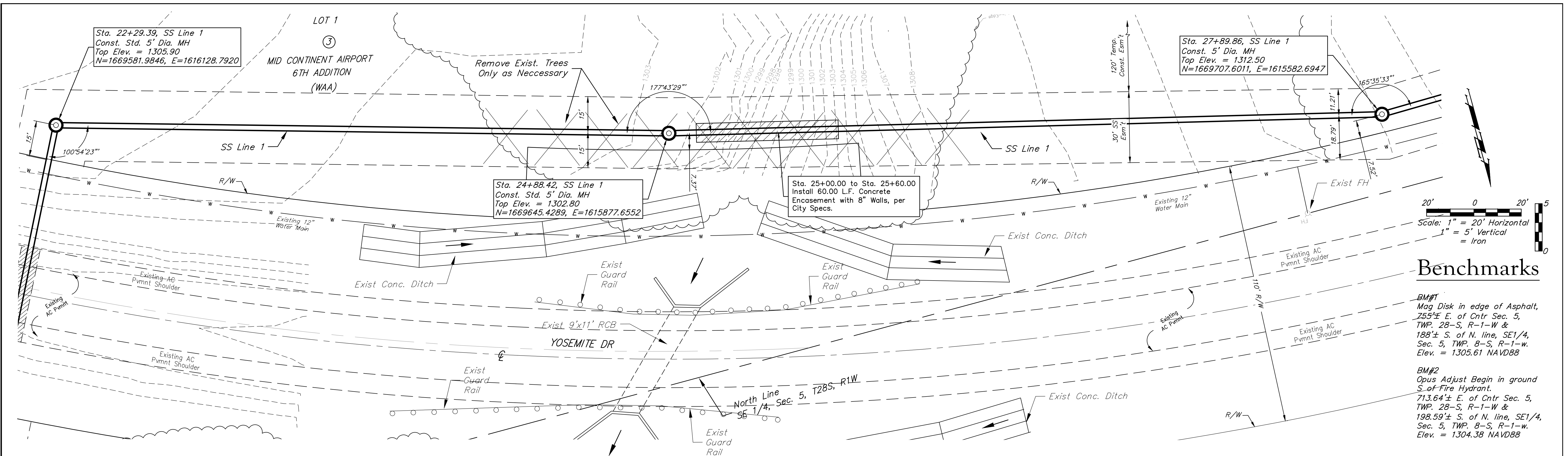


**SS LINE 1**



Contractor to Install Traffic Control Barricades on Yosemite Dr. to Traffic during Construction until completed with Pavement Replacement including Stripping.

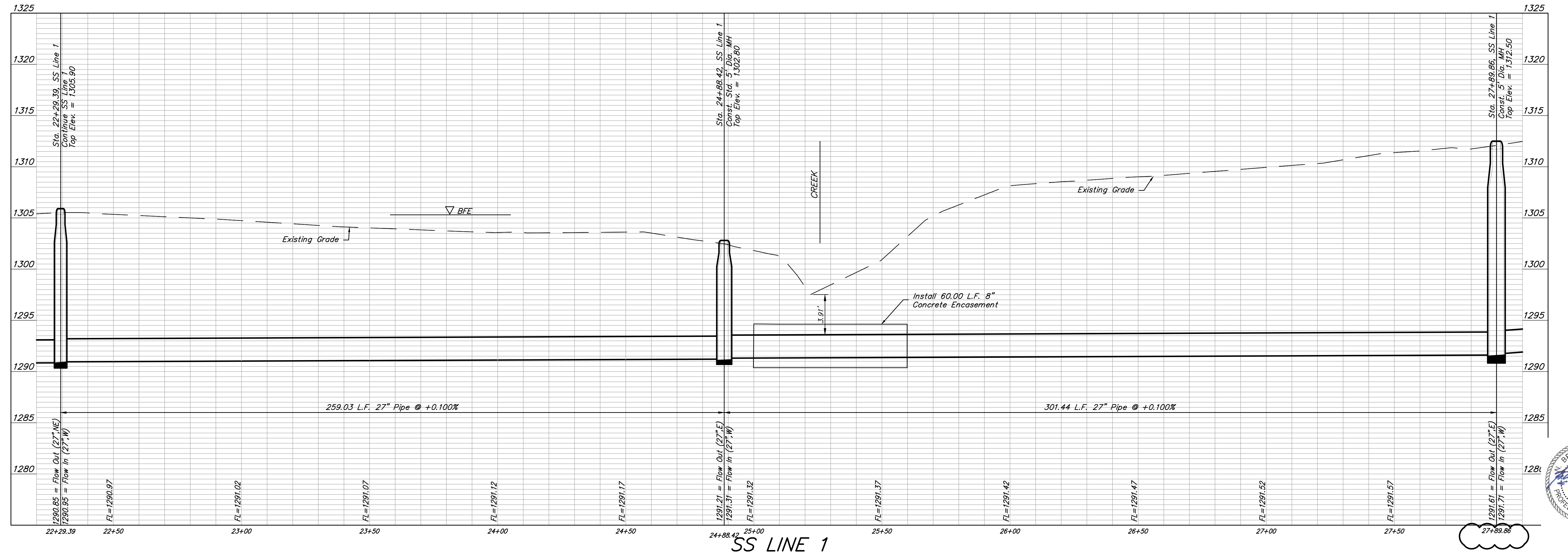




### Benchmarks

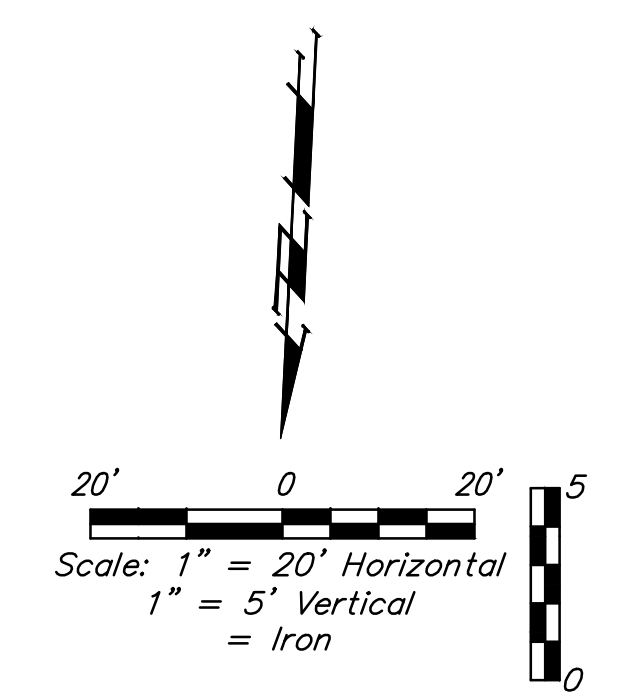
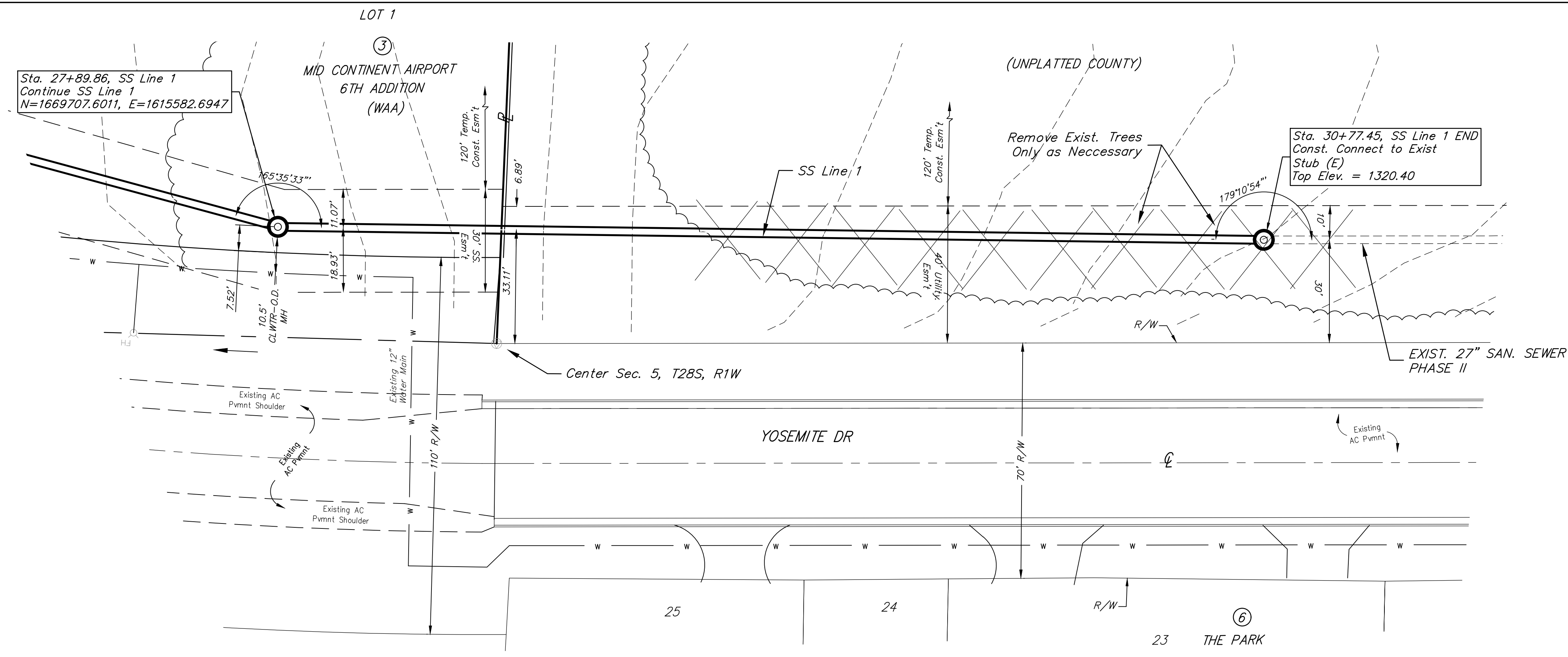
**BM#1**  
Mag Disk in edge of Asphalt, 755± E. of Cntr Sec. 5, TWP. 28-S, R-1-W & 188± S. of N. line, SE1/4, Sec. 5, TWP. 8-S, R-1-W. Elev. = 1305.61 NAVD88

**BM#2**  
Opus Adjust Begin in ground S. of Fire Hydrant, 713.64± E. of Cntr Sec. 5, TWP. 28-S, R-1-W & 198.59± S. of N. line, SE1/4, Sec. 5, TWP. 8-S, R-1-W. Elev. = 1304.38 NAVD88



**Baughman Company, P.A.**  
Baughman

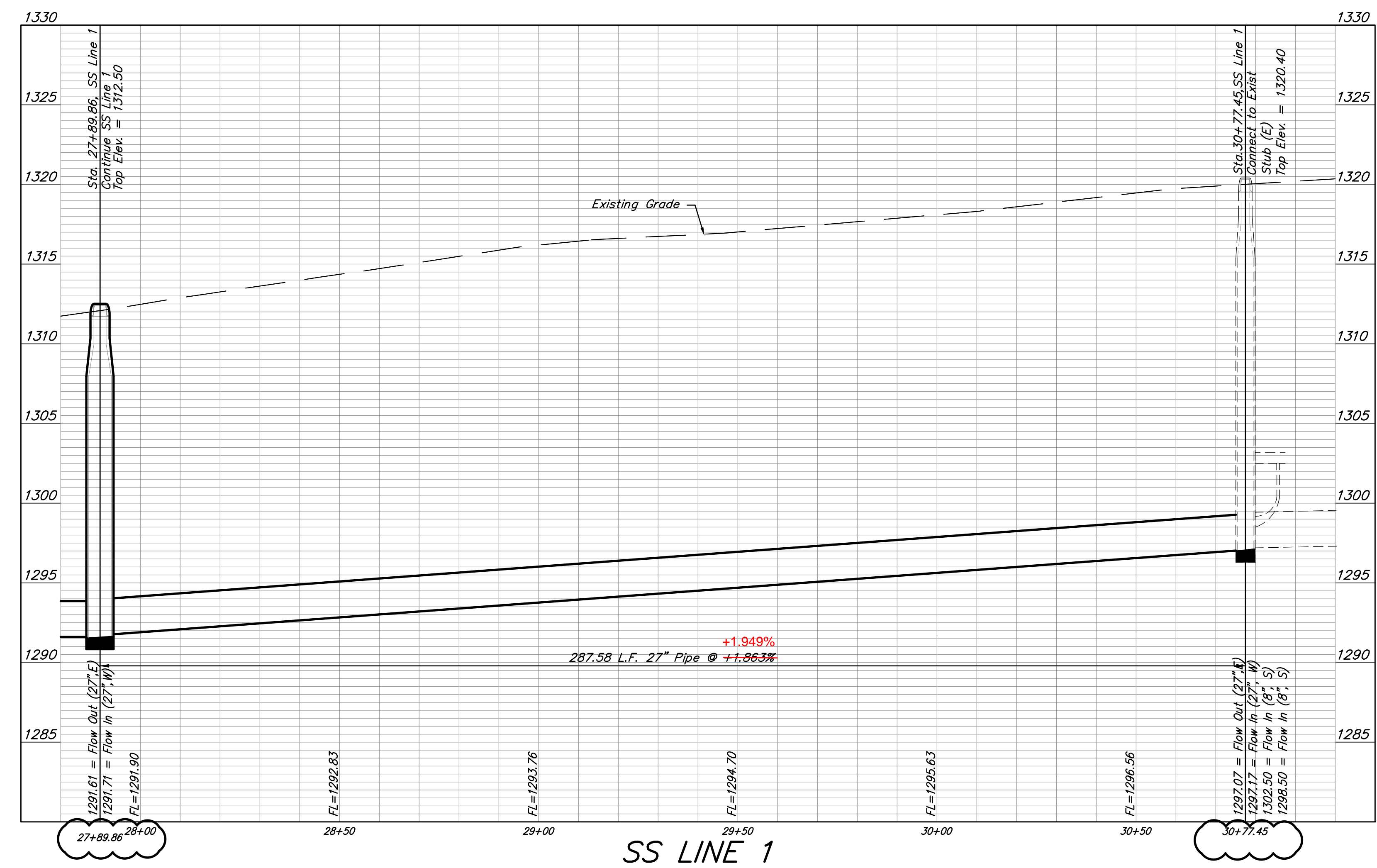
Schulte-Johnson 2nd Addition  
**SS LINE 1**  
Sanitary Sewer Line Improvements



### Benchmarks

**BM#1**  
Mag Disk in edge of Asphalt,  
755'± E. of Cntr Sec. 5,  
TWP. 28-S, R-1-W &  
188'± S. of N. line, SE1/4,  
Sec. 5, TWP. 8-S, R-1-w.  
Elev. = 1305.61 NAVD88

**BM#2**  
Opus Adjust Begin in ground  
S of Fire Hydrant.  
713.64'± E. of Cntr Sec. 5,  
TWP. 28-S, R-1-W &  
198.59'± S. of N. line, SE1/4,  
Sec. 5, TWP. 8-S, R-1-w.  
Elev. = 1304.38 NAVD88



# MID-CONTINENT AIRPORT 6TH ADDITION TO WICHITA, SEDGWICK COUNTY, KANSAS

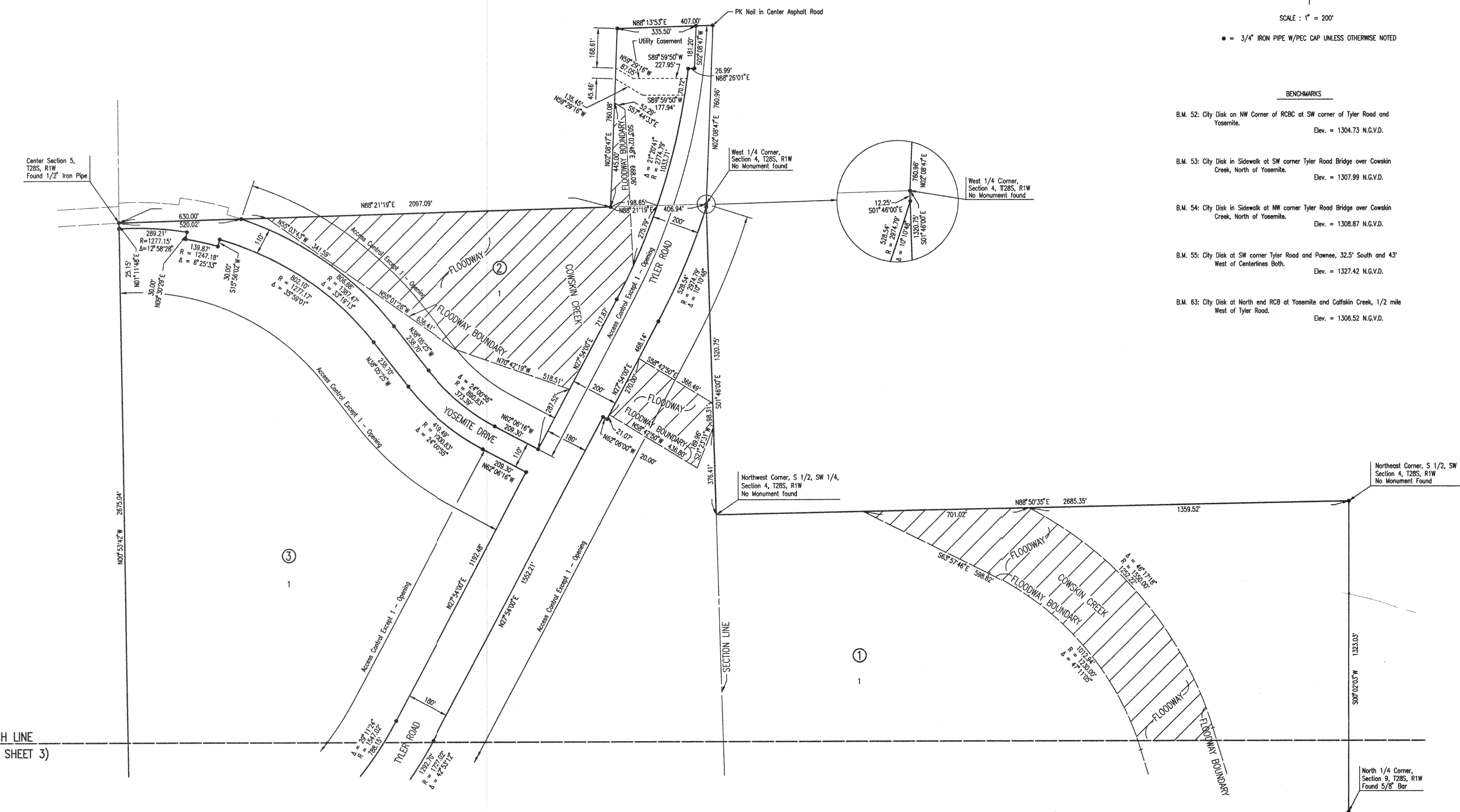


SCALE : 1" = 200'

● = 3/4" IRON PIPE W/PEC CAP UNLESS OTHERWISE NOTED

### BENCHMARKS

- B.M. 52: City Disk on NW Corner of RCB at SW corner of Tyler Road and Yosemite. Elev. = 1304.73 N.G.V.D.
- B.M. 53: City Disk in Sidewalk at SW corner Tyler Road Bridge over Cowskin Creek, North of Yosemite. Elev. = 1307.99 N.G.V.D.
- B.M. 54: City Disk in Sidewalk at NW corner Tyler Road Bridge over Cowskin Creek, North of Yosemite. Elev. = 1308.87 N.G.V.D.
- B.M. 55: City Disk at SW corner Tyler Road and Pawnee, 32.5' South and 43' West of Centerlines Both. Elev. = 1327.42 N.G.V.D.
- B.M. 63: City Disk at North end RCB at Yosemite and Calfskin Creek, 1/2 mile West of Tyler Road. Elev. = 1306.52 N.G.V.D.



DSWR: GJM OPER: GJM SCALE: 1"=200.00  
Q:\1999\39642\Airport Plats\6th\FINAL 6TH-1 01-03-2001 08:58:35 am

MATCH LINE  
(SEE SHEET 3)