

GENERAL NOTES:

1. Contractor will be required to provide notice to utility companies a minimum of seventy-two (72) hours prior to any excavation, as follows:

Kansas One-Call 687-2470

The Contractor must notify the following in case of an emergency:

Cox Communications 262-4270
 Kansas Gas Service 1-888-482-4950
 Evergy 383-8650
 Aquila Energy 1-800-303-0357
 AT&T 268-2245
 City of Wichita Water Dept. 268-4563
 City of Wichita Sewer Maint. 268-4024
 City of Wichita Storm Sewer Maint. 268-4030
 City of Wichita Traffic Maint. 268-4034
 Conoco Phillips Pipeline Co. 1-877-267-2290
 Southern Star Pipeline Co. 529-6600
 Kinder-Morgan Pipeline Co. 1-888-844-5658

2. Utility service lines, poles, valve boxes, meters, and etcetera are to be adjusted as necessary by others prior to construction unless the plans specifically call for their adjustment by the Contractor or unless the plans specifically identify a utility to be adjusted by its owner during construction. Existing utilities and their location, as shown on the plans, represent the best information obtainable for design. The Contractor will be required to work around existing utilities within the right-of-way which do not conflict with proposed construction.

3. Rubble from the removal of miscellaneous structures and excess excavation which is to be wasted shall be disposed of on sites to be provided by the Contractor. These sites shall be approved by the Engineer as to suitability, appearance and site location. Locations, in the opinion of the Engineer, that will leave an unsightly appearance will not be approved. All disposal sites must be approved by the Kansas Department of Health and Environment. Material either stockpiled or disposed of in a flood plain would require a Kansas State Board of Agriculture permit. Any material dumped in waters of the United States or wetlands is subject to U.S. Corps. of Engineers permitting regulations. Any material buried or stockpiled beyond approved construction limits would require additional archaeological investigations unless buried in a previously approved borrow location.

4. Trees and shrubs in public right-of-way which are in direct conflict with proposed new construction shall be removed by the Contractor with the Engineer's approval. Trees and shrubs which are not in direct conflict with proposed new construction shall be saved and protected from damage.

5. The Contractor shall give all property owners and/or tenants of developed property abutting the construction of this project a minimum of ten (10) days notice prior to start of construction.

6. The Contractor shall be responsible for preserving property irons. The Contractor will be required to re-establish any property irons which are damaged or destroyed by his construction operations. Such irons shall be re-established by a licensed land surveyor in accordance with state laws.

7. All existing and proposed erosion control measures including silt fencing, erosion control mat, straw bales, inlet barriers, and const. entrance shall be maintained throughout construction by the contractor and until project is accepted by the City of Wichita. The on-site engineer shall complete weekly reports on the status of erosion control measures. The contractor shall be required to comply with maintenance and/or replacement of erosion control measures as determined by the on-site engineer until project is accepted by City of Wichita. Maintenance and/or replacement of erosion control measures to be paid by L.S. bid item "Maintain Existing BMP's."

8. All excess excavation shall remain on-site and shall be stockpiled or spread at a location determined by the engineer.

9. All areas disturbed during construction shall be seeded as follows (Temporary Seeding):

Seed: Rye grass (PLS)--5 lbs./1000 Sq. Ft.

All costs associated with seeding shall be included in biditem "Seeding".

10. Trees and shrubs in the work area which are in direct conflict with proposed new construction shall be removed by the Contractor ONLY with the Developer or Baughman Company approval. Trees and shrubs which are not in direct conflict with proposed new construction shall be saved and protected from damage. If trimming is necessary, a chainsaw shall be used. Breaking limbs with equipment will not be allowed. An on-site pre-construction meeting will occur prior to any construction to discuss tree removal, tree protection, and tree trimming.

11. Maintain a minimum of 10-foot horizontal separation between all Water lines (Mains, Services and Fire Hydrants) and all Sanitary Sewer lines (Main, Services and Manholes) at crossings. All separation distances are to be measured from edge-to-edge, at the closest point.

12. Maintain a minimum of 2-foot vertical separation between all Water lines (Main and Services) and all gravity Sanitary Sewer lines (Mains, Services and Manholes) at crossings. All separation distances are to be measured from edge-to-edge, at the closest point.

13. Maintain a minimum of 2-foot vertical separation between all Water lines (Main and Services) and all pressurized Sanitary Sewer lines (Force Main and Services) at crossings. Water lines must always be placed above pressurized Sanitary Sewer lines where they cross. All separation distances are to be measured from edge-to-edge, at the closest point.

Phase II SANITARY SEWER IMPROVEMENTS to serve

SCHULTE JOHNSON 2ND ADDITION

CITY OF WICHITA, KANSAS

Gary Janzen, P.E. City Engineer
 Project Number ~~468-2021-035415~~ 468-2021-035145
 ORG Code Number: 53200120
 Munis Number: S0028

Benchmarks

BENCHMARKS:
 3/8" IP CNTR SEC. 5, TWP. 28-S, R-1-W.
 Elev. = 1315.56 NAVD88

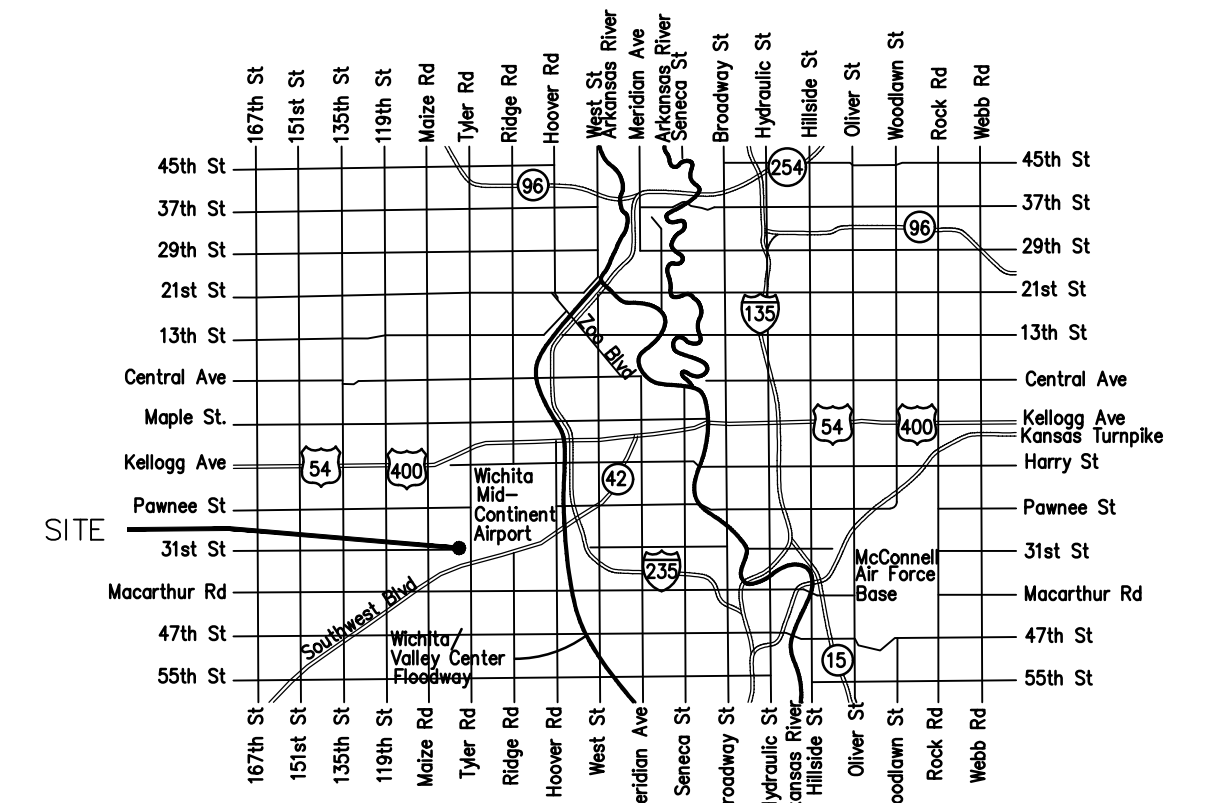
Mag Disk in edge of Asphalt,
 755± E. of Cntr Sec. 5, TWP. 28-S, R-1-W &
 188± S. of N. line, SE1/4,
 Sec. 5, TWP. 8-S, R-1-W.
 Elev. = 1305.61 NAVD88

#4 IP NE Cor., SW1/4,
 Sec. 5, TWP. 28-S, R-1-W.
 Elev. = 1334.01 NAVD88

SS As-Built - Sheet 9
 Inspector: Shawn Strippling
 Contractor: McCullough Excavation
 Superintendent: Rob Gray
 Company: City of Wichita

S. Lowe - City of Wichita, Field Project Engineer
 As-built
 Stubs
 Release Date (for connection purposes only): 3/6/2023
 Completion Date:
 : apr 3/8/2023

BUILT PER PLAN

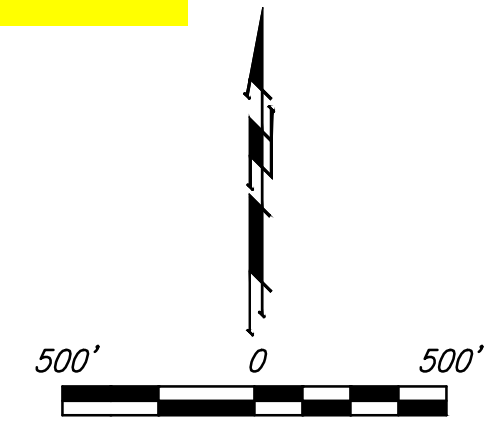
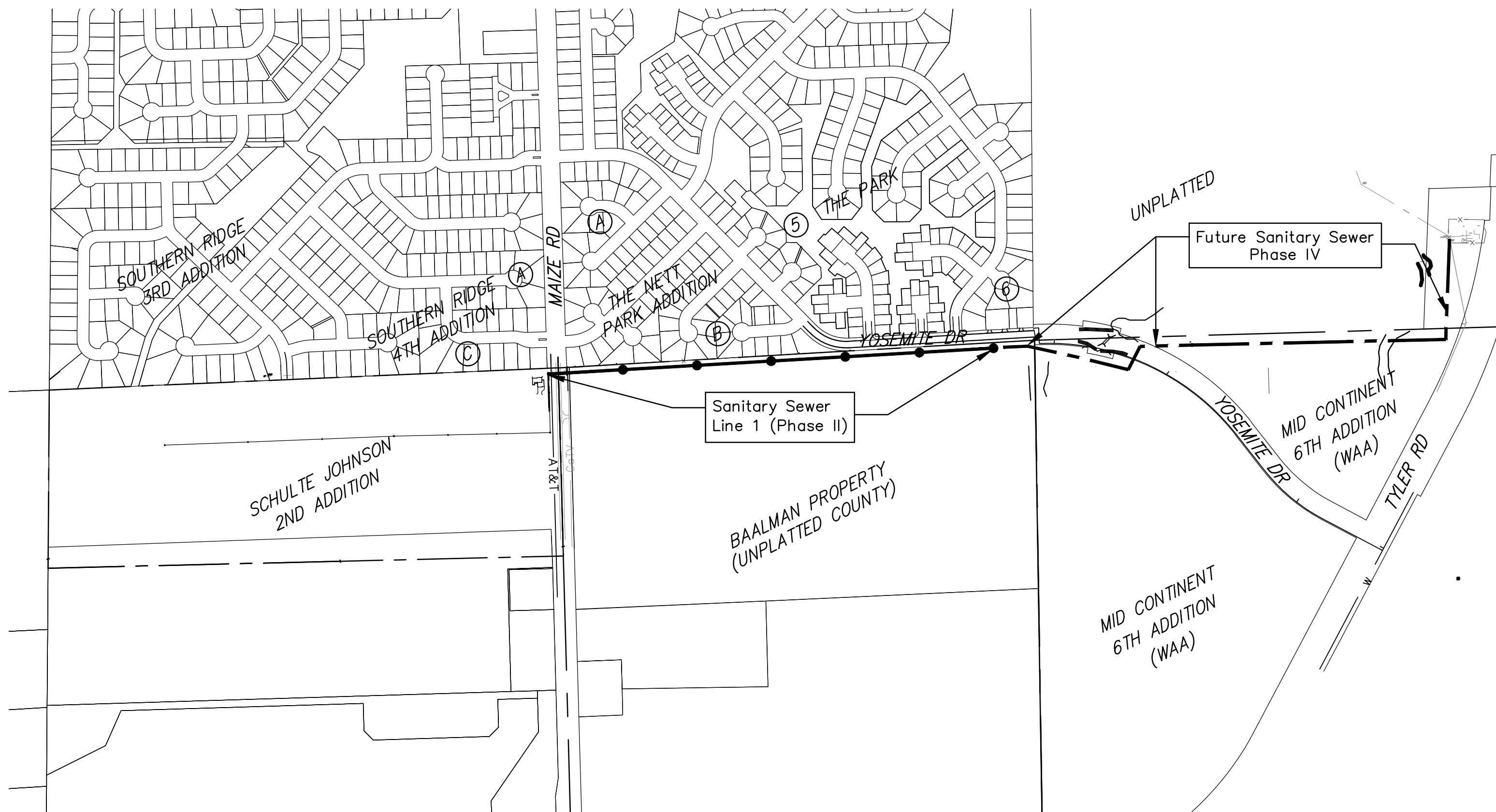


Vicinity Map

Sheet Index

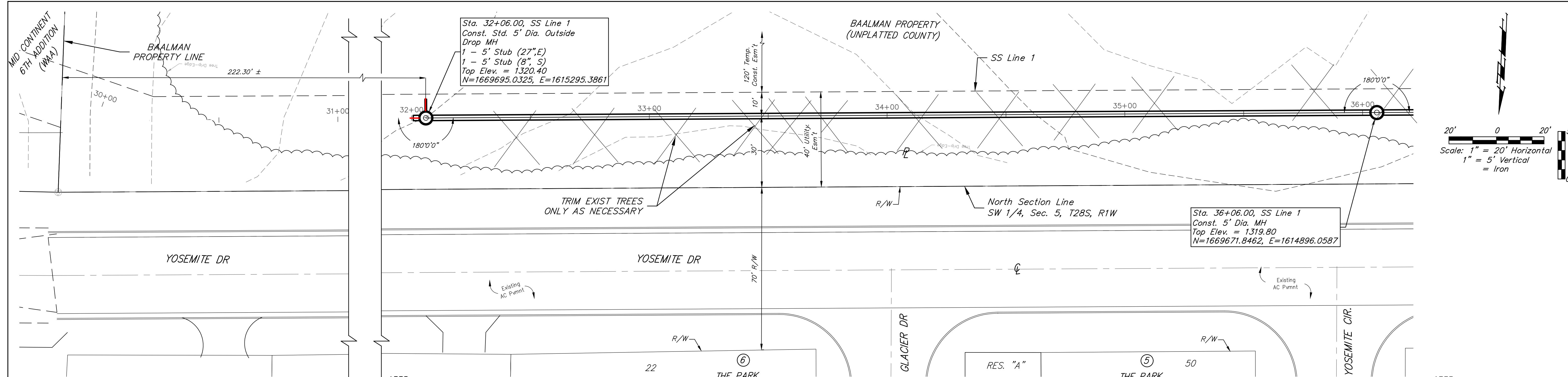
Title Sheet	1
Precast SS Manhole Detail	2
Manhole Frame & Cover Detail	3
Line 1 Plan and Profile	4-9
SS Details	10
Traffic Control Detour Plan	11
Erosion Control Plan	12
Erosion Control BMP Details	13-17
Coordinate Sheet	18
Copy of Plat	19

*Current Sanitary Sewer Control Details are available at City of Wichitaweb site at <http://www.wichita.gov/PWU/StandardsConstruction/Forms/WebPageStandardsConstruction.aspx>



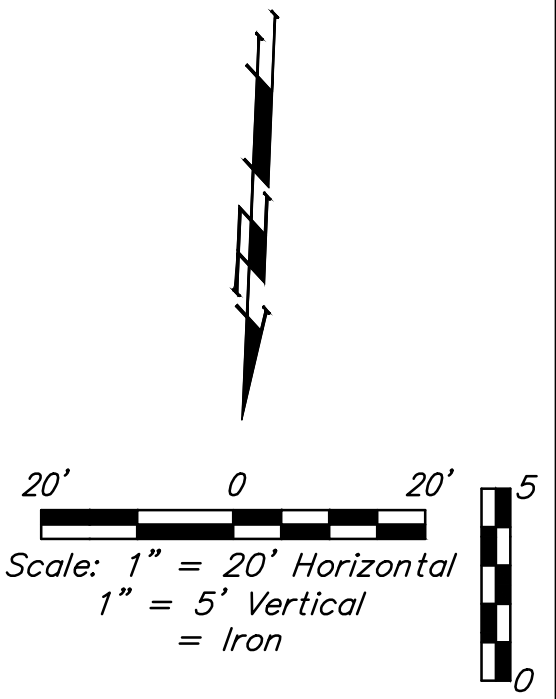
April 6, 2022

Baughman
 Baughman Company, P.A. 315 Ellis St. Wichita, KS 67211 P 316-262-7271 F 316-262-0148
 ENGINEERING | SURVEYING | PLANNING | LANDSCAPE ARCHITECTURE



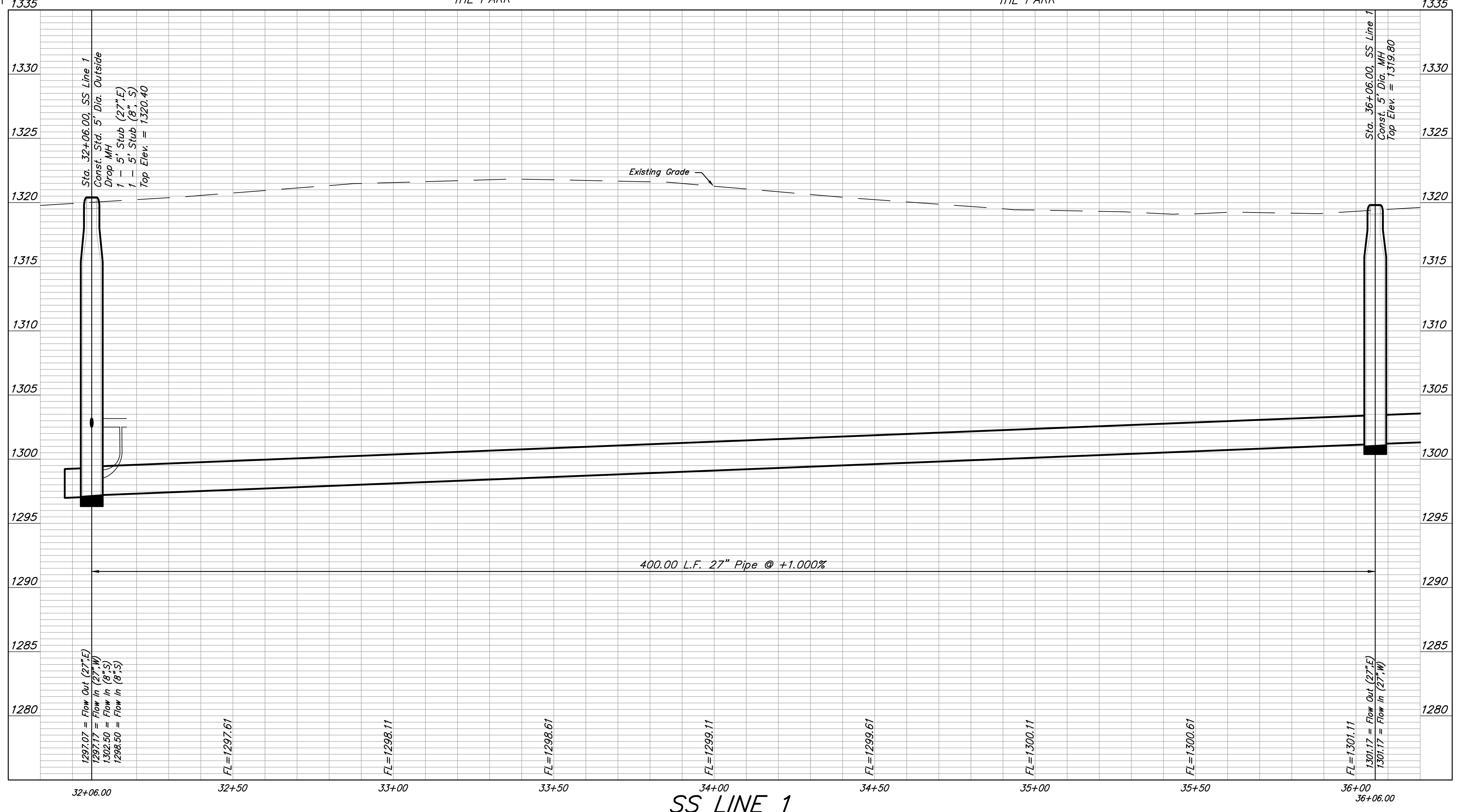
Sta. 32+06.00, SS Line 1
 Const. Std. 5' Dia. Outside
 Drop MH
 1 - 5' Stub (27", E)
 1 - 5' Stub (8", S)
 Top Elev. = 1320.40
 N=1669695.0325, E=1615295.3861

Sta. 36+06.00, SS Line 1
 Const. 5' Dia. MH
 Top Elev. = 1319.80
 N=1669671.8462, E=1614896.0587



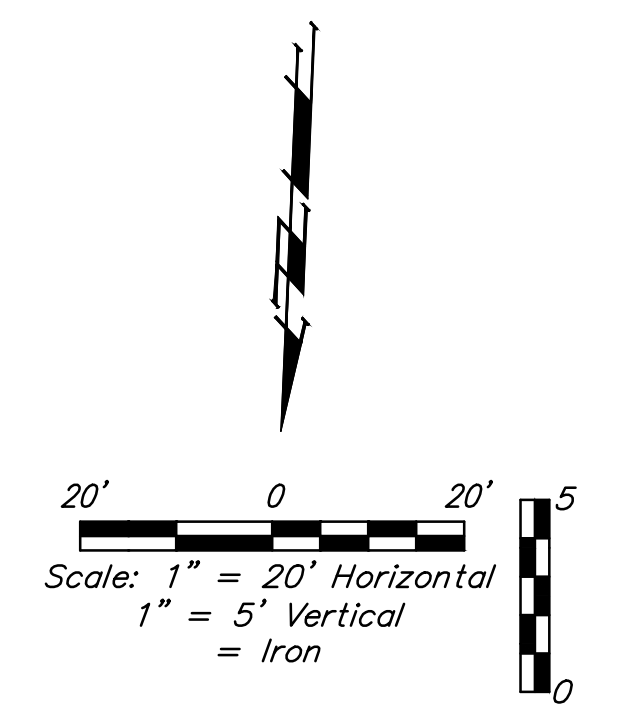
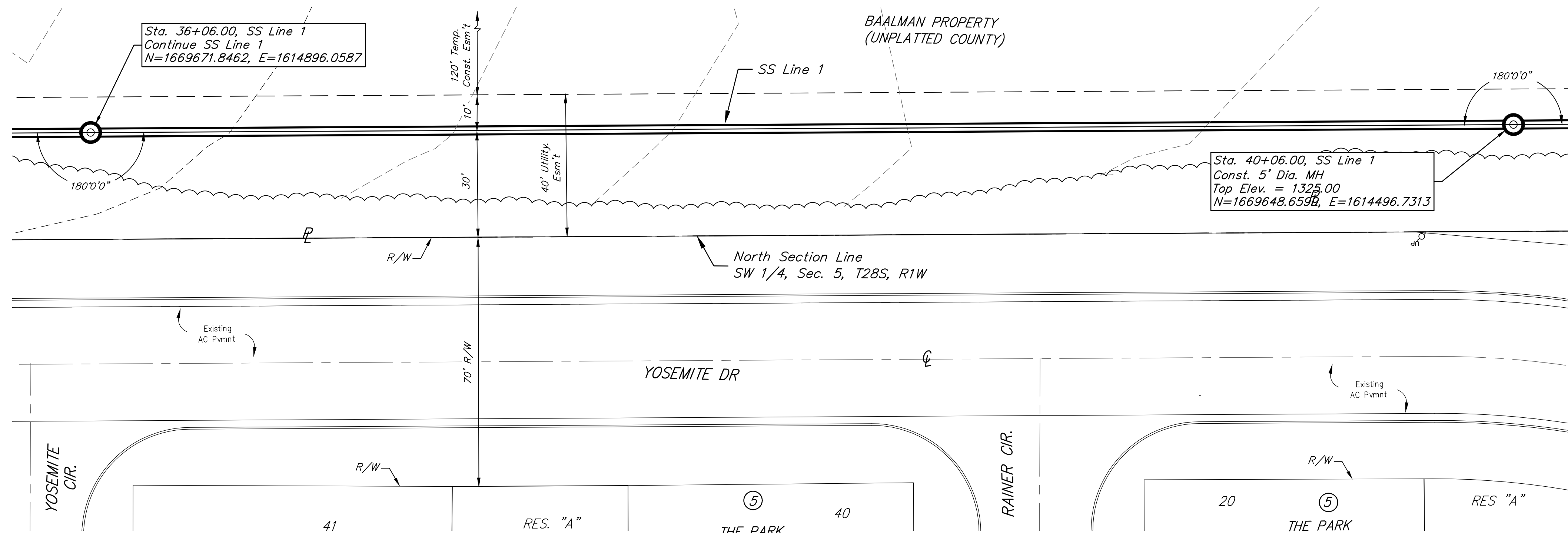
Benchmarks

- BENCHMARKS:**
- 3/8" IP CNTR SEC. 5, TWP. 28-S, R-1-W. Elev. = 1315.56 NAVD88
 - Mag Disk in edge of Asphalt, 755'± E. of Cntr Sec. 5, TWP. 28-S, R-1-W & 188'± S. of N. line, SE1/4, Sec. 5, TWP. 8-S, R-1-W. Elev. = 1305.61 NAVD88
 - #4 IP NE Cor., SW1/4, Sec. 5, TWP. 28-S, R-1-W. Elev. = 1334.01 NAVD88



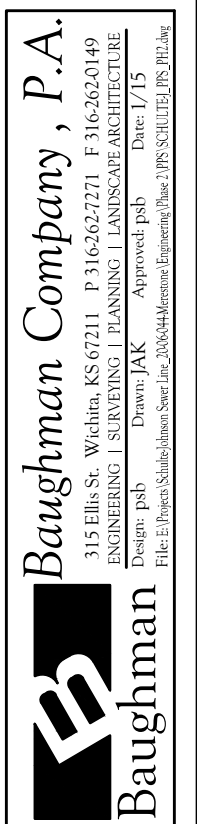
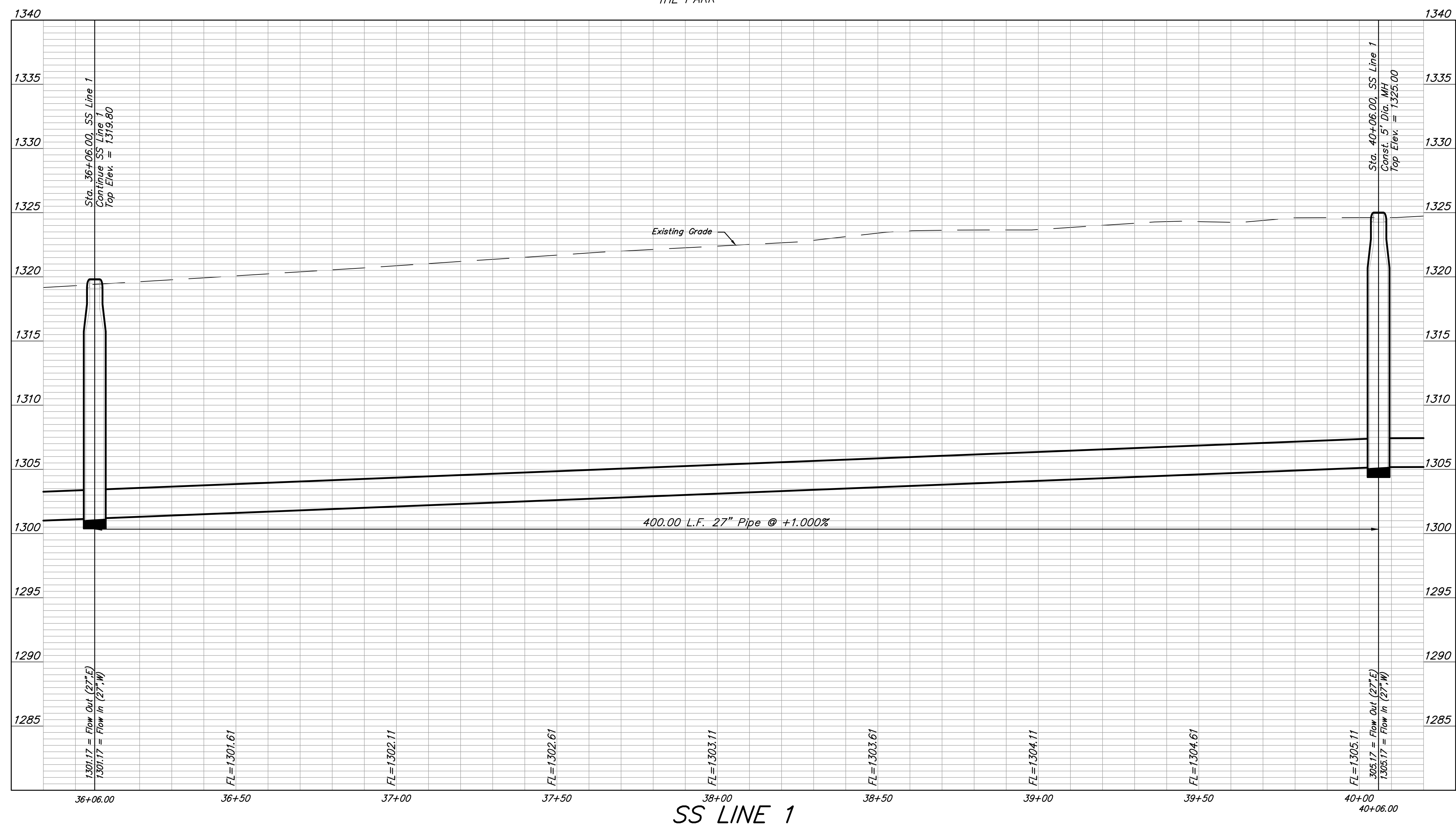
Baughman Company, P.A.
 BRENT WOOTEN, P.E., License No. 8470, dated 04/06/2022
 ENGINEERING, SURVEYING, PLANNING, LANDSCAPE ARCHITECTURE
 DESIGN, P&E
 BRENT WOOTEN, P.E., License No. 8470, dated 04/06/2022

Schulte-Johnson 2nd Addition
SS LINE 1
 Sanitary Sewer Line Improvements

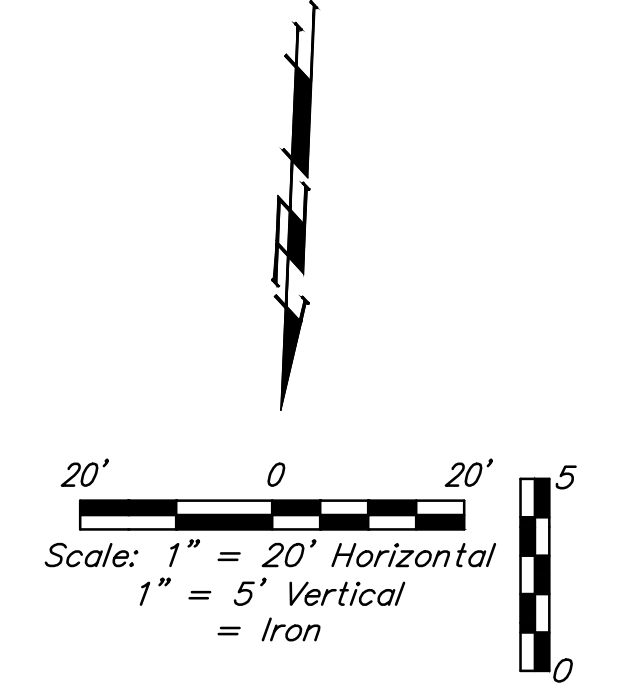
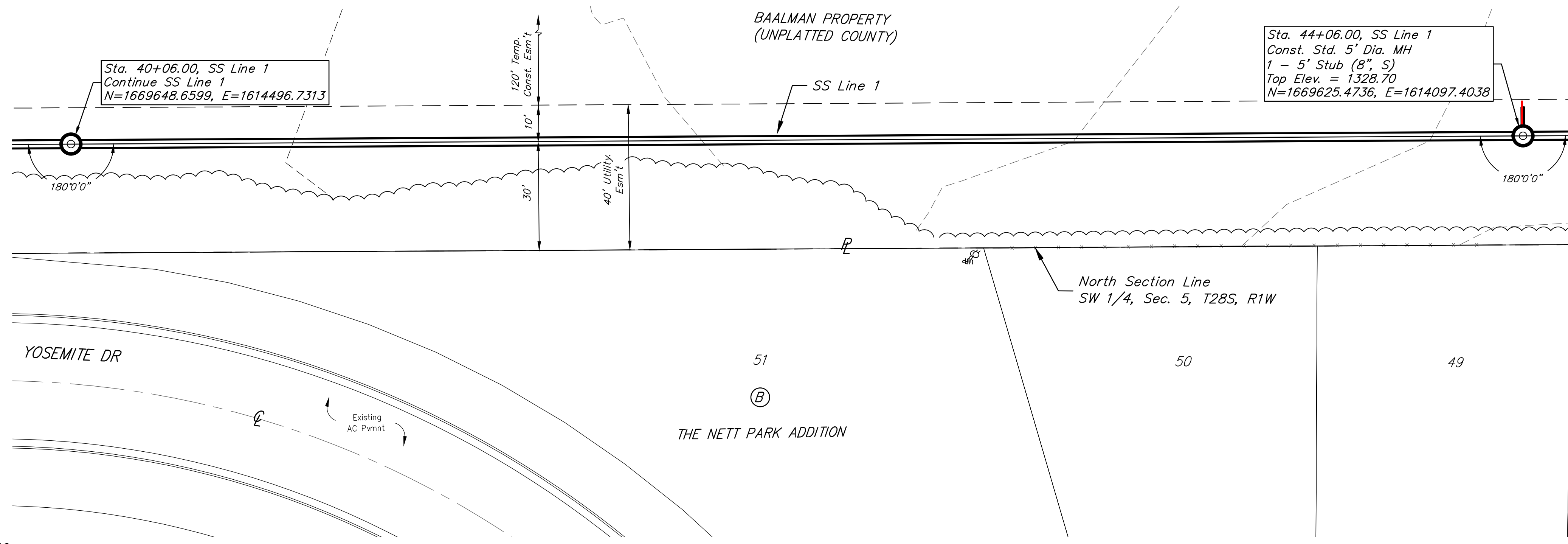


Benchmarks

- BENCHMARKS:**
 3/8" IP CNTR SEC. 5,
 TWP. 28-S, R-1-W.
 Elev. = 1315.56 NAVD88
- Mag Disk in edge of Asphalt,
 755± E. of Cntr Sec. 5,
 TWP. 28-S, R-1-W &
 188± S. of N. line, SE1/4,
 Sec. 5, TWP. 8-S, R-1-W.
 Elev. = 1305.61 NAVD88
- #4 IP NE Cor., SW1/4,
 Sec. 5, TWP. 28-S, R-1-W.
 Elev. = 1334.01 NAVD88



Schulte-Johnson 2nd Addition
SS LINE 1
 Sanitary Sewer Line Improvements

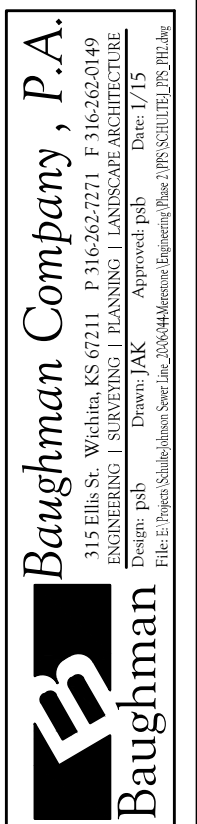
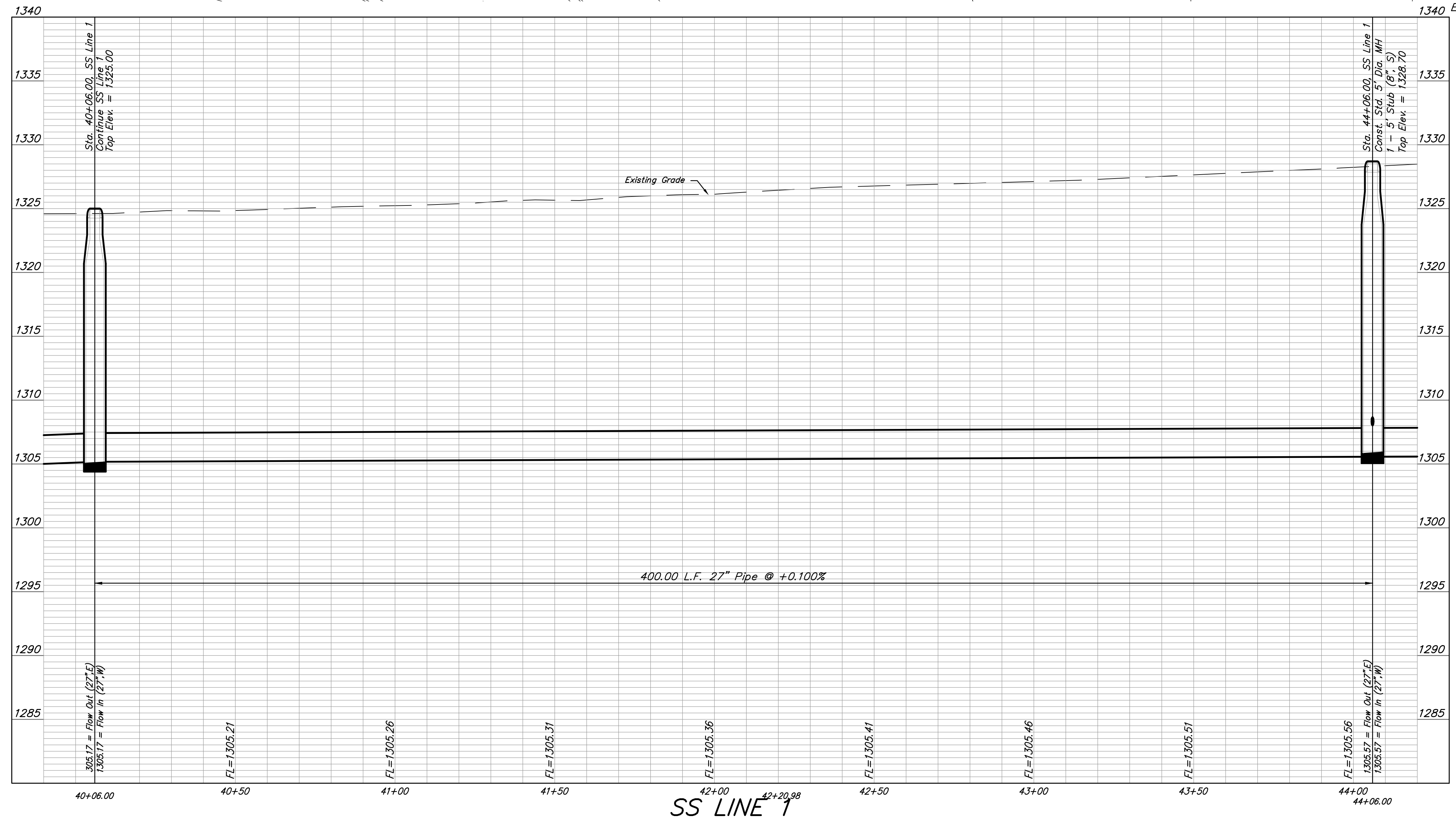


Benchmarks

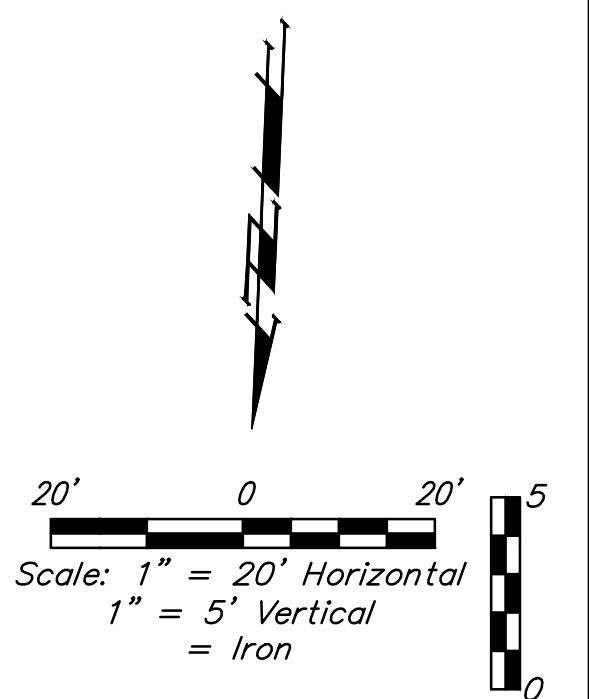
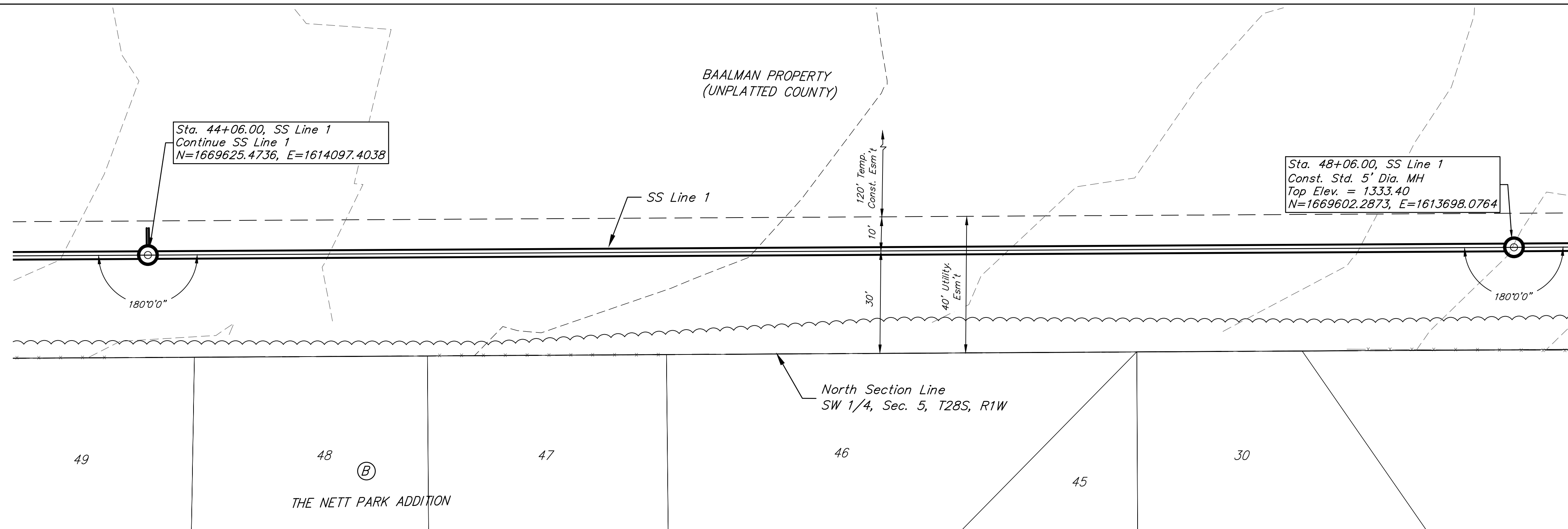
BENCHMARKS:
 3/8" IP CNTR SEC. 5,
 TWP. 28-S, R-1-W.
 Elev. = 1315.56 NAVD88

Mag Disk in edge of Asphalt,
 755± E. of Cntr Sec. 5,
 TWP. 28-S, R-1-W &
 188± S. of N. line, SE1/4,
 Sec. 5, TWP. 8-S, R-1-W.
 Elev. = 1305.61 NAVD88

#4 IP NE Cor., SW1/4,
 Sec. 5, TWP. 28-S, R-1-W.
 Elev. = 1334.01 NAVD88



Schulte-Johnson 2nd Addition
SS LINE 1
 Sanitary Sewer Line Improvements

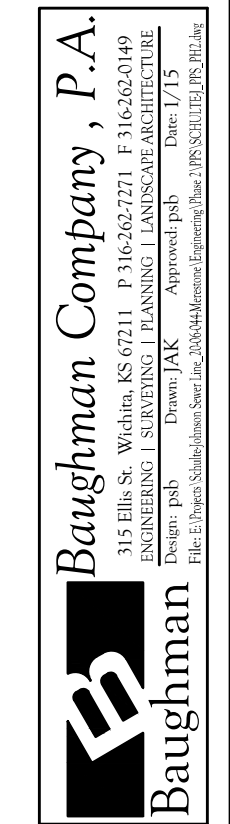
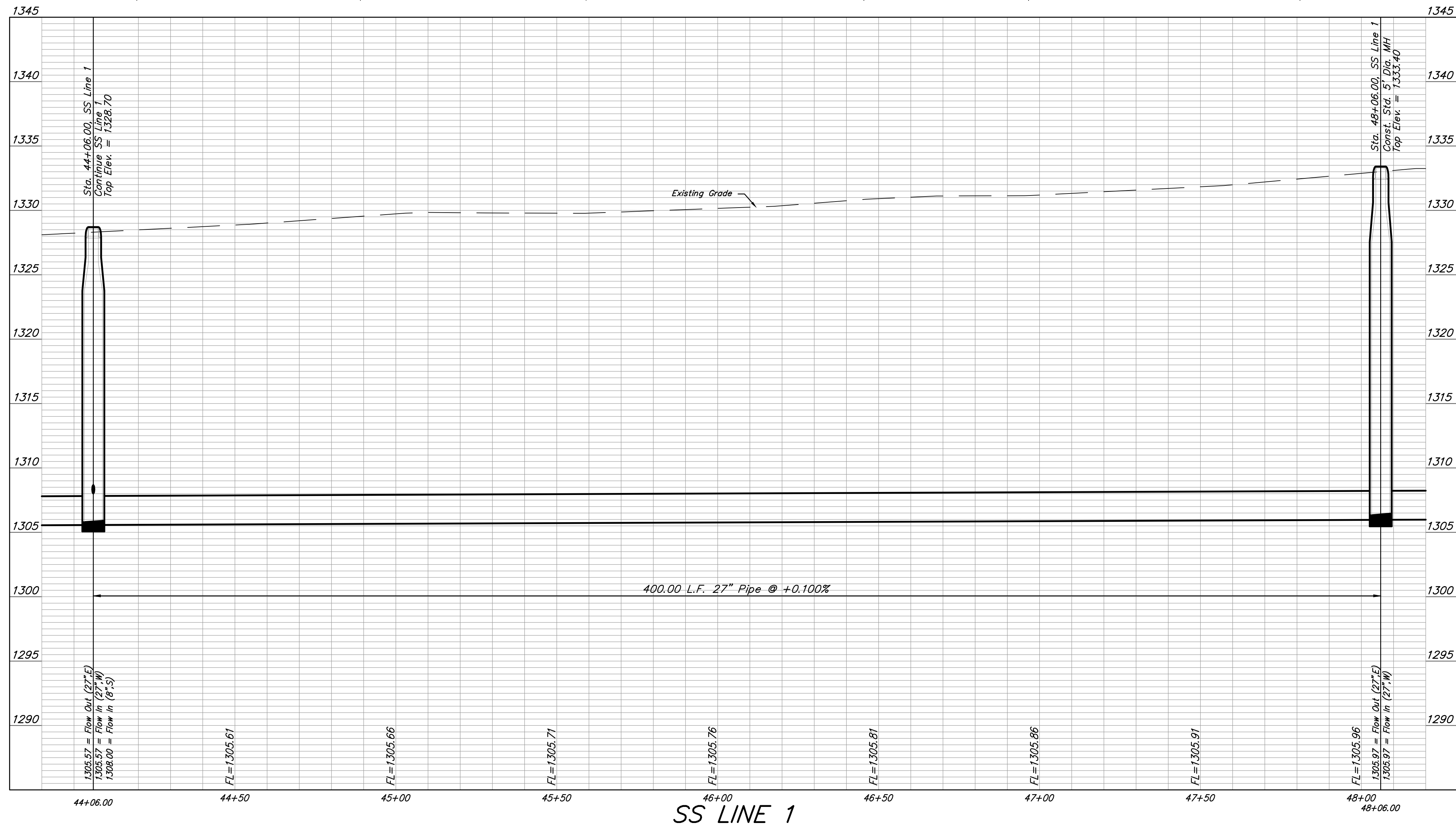


Benchmarks

BENCHMARKS:
 3/8" IP CNTR SEC. 5,
 TWP. 28-S, R-1-W.
 Elev. = 1315.56 NAVD88

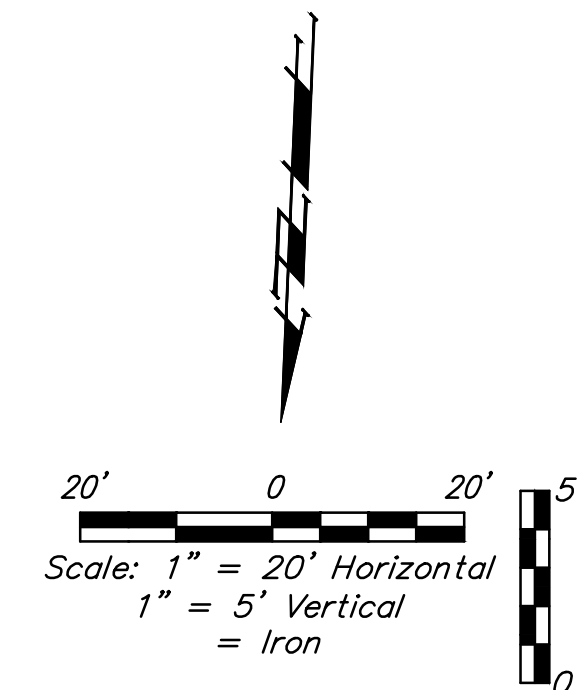
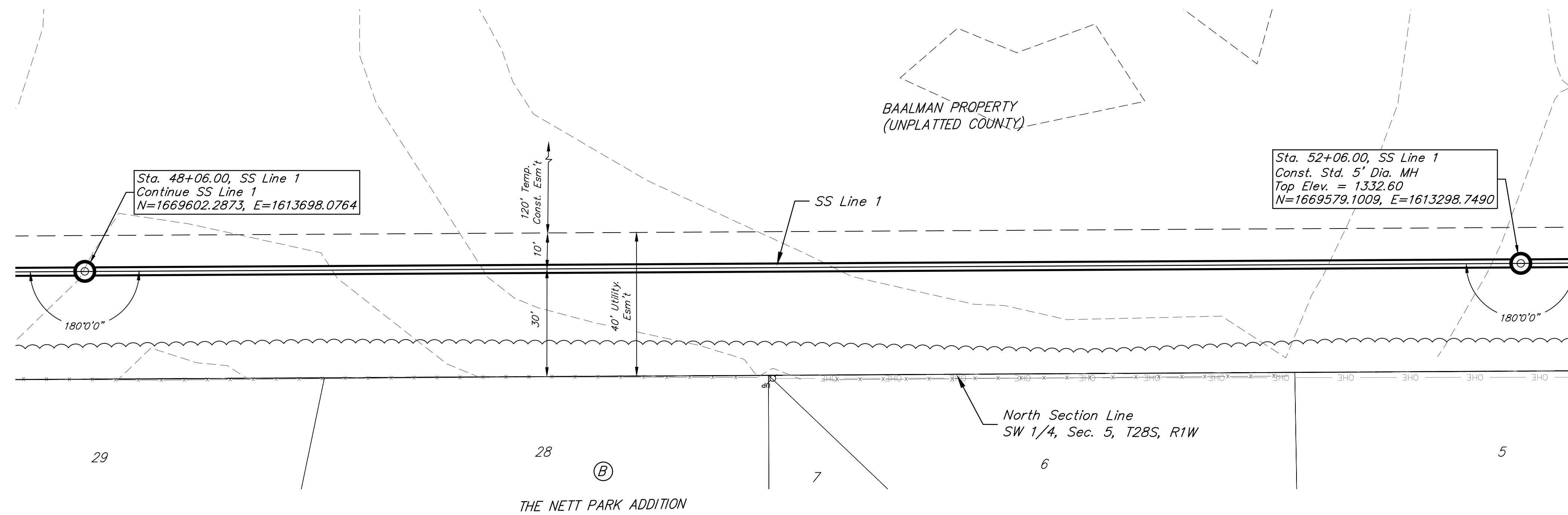
Mag Disk in edge of Asphalt,
 755'± E. of Cntr Sec. 5,
 TWP. 28-S, R-1-W &
 188'± S. of N. line, SE1/4,
 Sec. 5, TWP. 8-S, R-1-w.
 Elev. = 1305.61 NAVD88

#4 IP NE Cor., SW1/4,
 Sec. 5, TWP. 28-S, R-1-W.
 Elev. = 1334.01 NAVD88



Schulte-Johnson 2nd Addition
SS LINE 1
 Sanitary Sewer Line Improvements



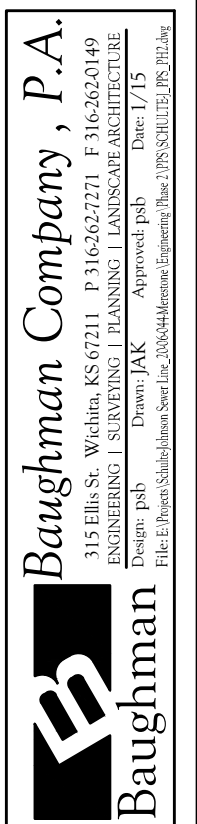
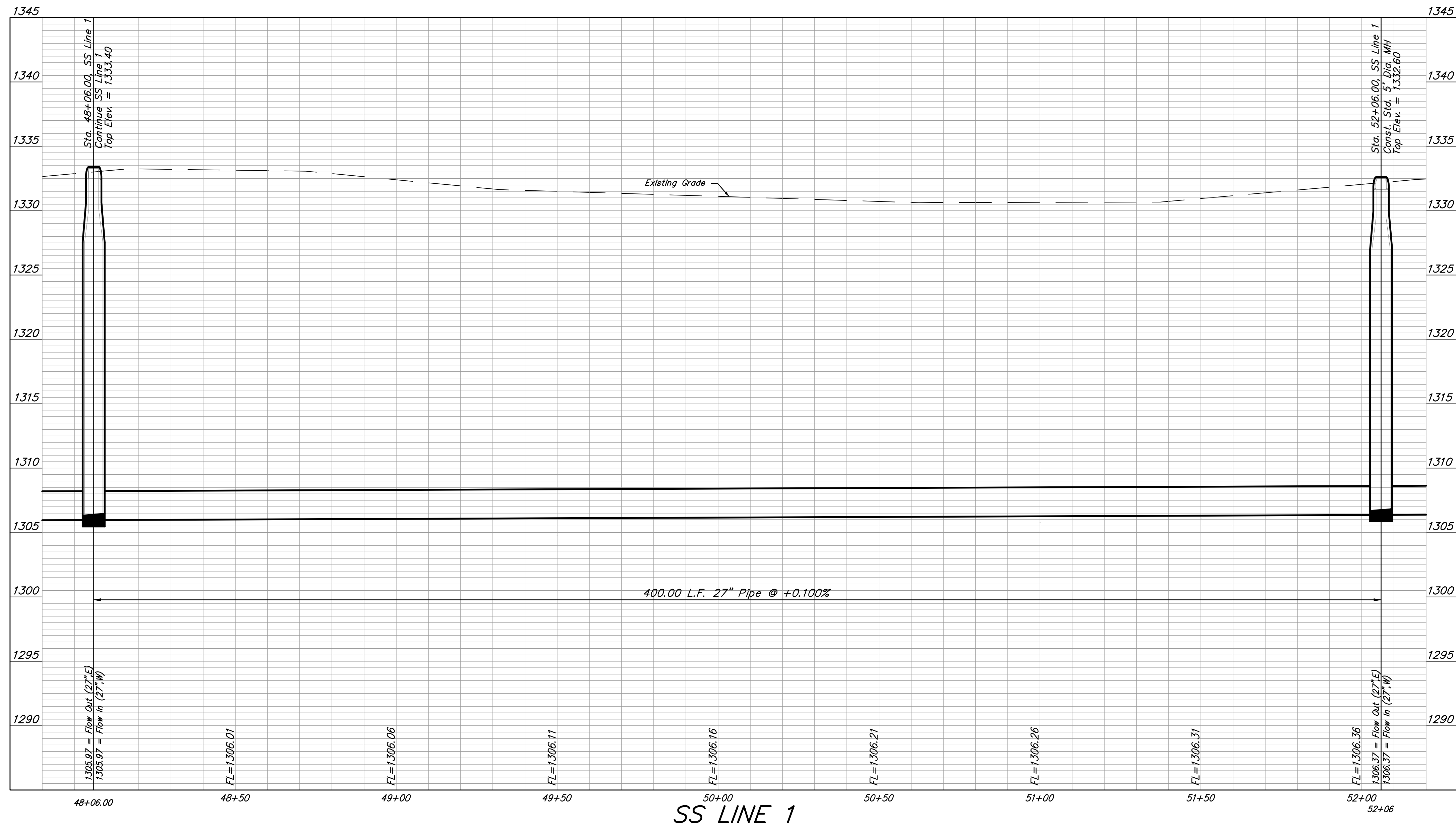


Benchmarks

BENCHMARKS:
 3/8" IP CNTR SEC. 5,
 TWP. 28-S, R-1-W
 Elev. = 1315.56 NAVD88

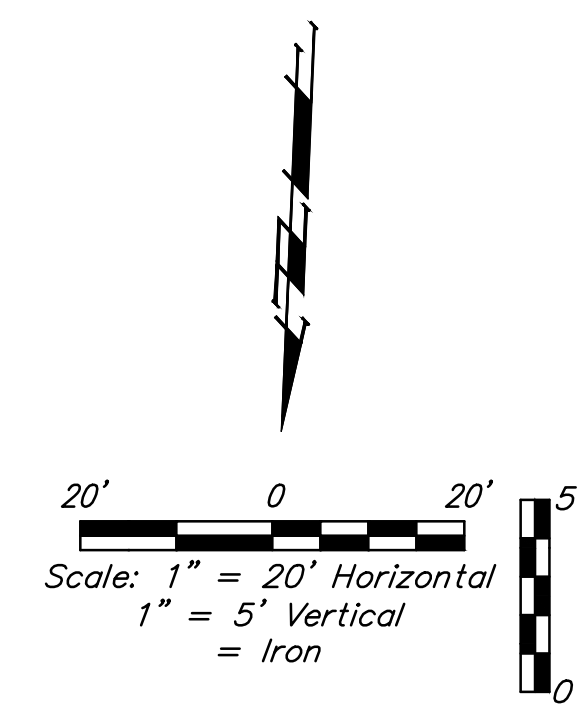
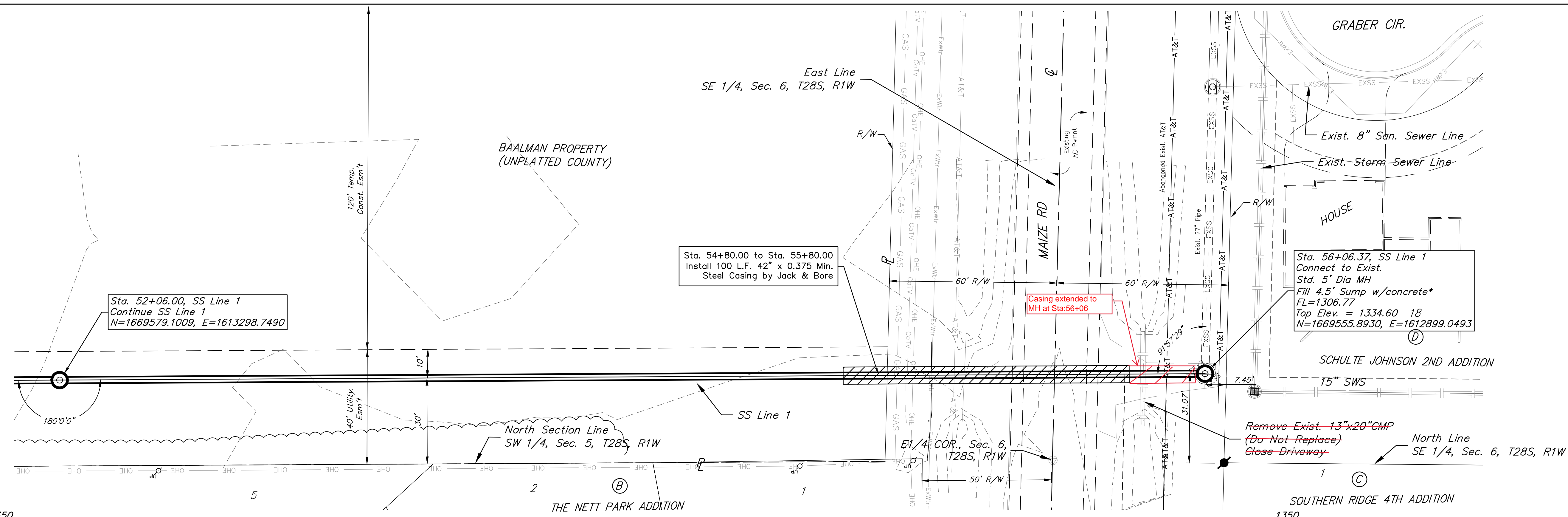
Mag Disk in edge of Asphalt,
 755'± E. of Cntr Sec. 5,
 TWP. 28-S, R-1-W &
 188'± S. of N. line, SE1/4,
 Sec. 5, TWP. 8-S, R-1-w.
 Elev. = 1305.61 NAVD88

#4 IP NE Cor., SW1/4,
 Sec. 5, TWP. 28-S, R-1-W.
 Elev. = 1334.01 NAVD88



Schulte-Johnson 2nd Addition
SS LINE 1
 Sanitary Sewer Line Improvements



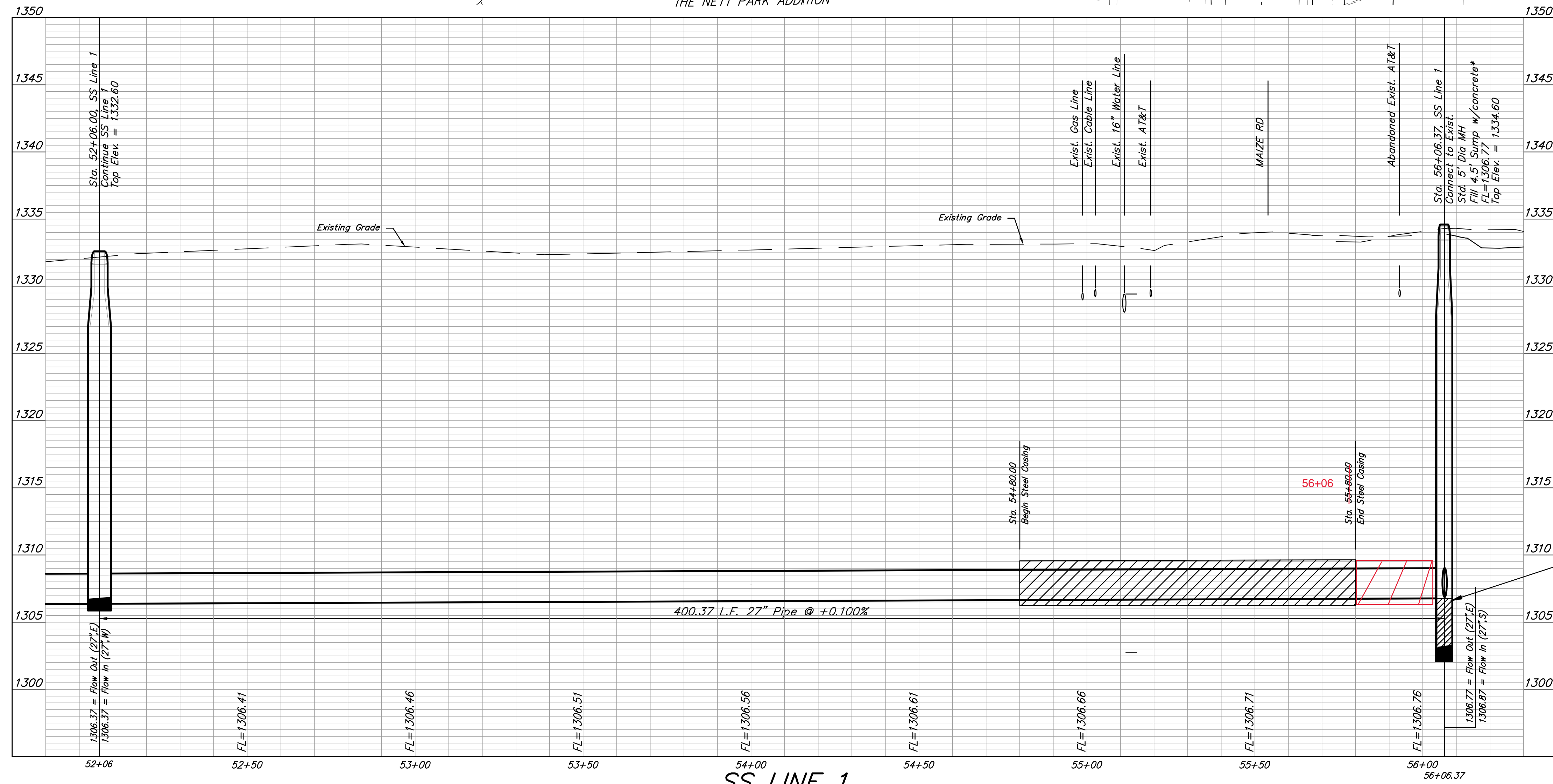


Benchmarks

BENCHMARKS:
 3/8" IP CNTR SEC. 5,
 TWP. 28-S, R-1-W.
 Elev. = 1315.56 NAVD88

Mag Disk in edge of Asphalt,
 755± E. of Cntr Sec. 5,
 TWP. 28-S, R-1-W &
 188± S. of N. line, SE1/4,
 Sec. 5, TWP. 8-S, R-1-W.
 Elev. = 1305.61 NAVD88

#4 IP NE Cor., SW1/4,
 Sec. 5, TWP. 28-S, R-1-W.
 Elev. = 1334.01 NAVD88



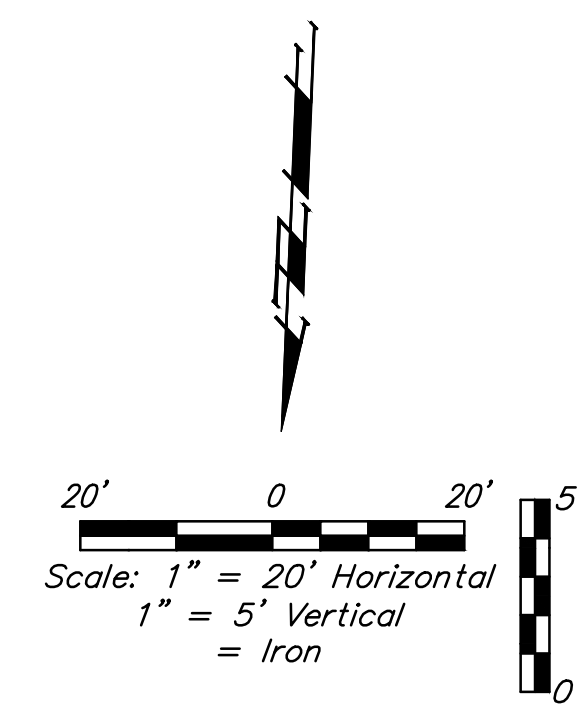
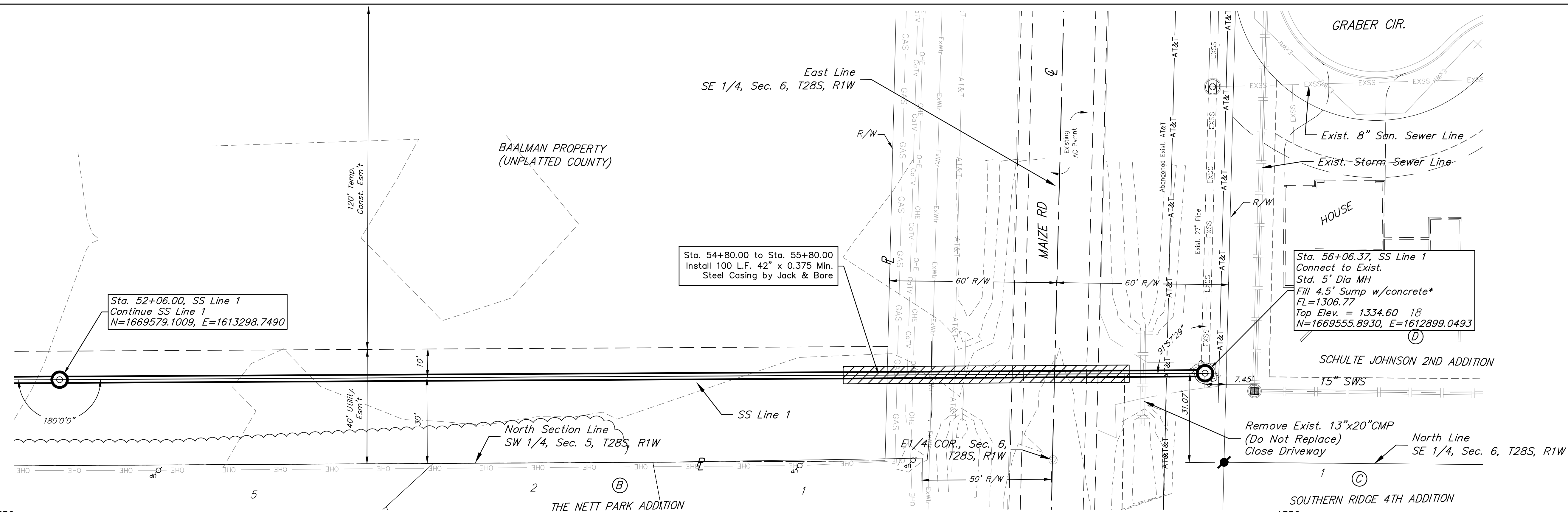
* Fill 4.5' Sump with Concrete.
 Shape Invert to Flow (E)
 Item to be Paid for as
 "Fill MH Sump" Lump Sum
 Bid Item.

SS LINE 1

Baughman Company, P.A.
 ENGINEERS, ARCHITECTS, PLANNERS
 1111 W. 19th St., Suite 100
 Lawrence, KS 66044
 Phone: 781-842-1111
 Fax: 781-842-1112
 Email: info@baughmanpa.com

Schulte-Johnson 2nd Addition
SS LINE 1
 Sanitary Sewer Line Improvements



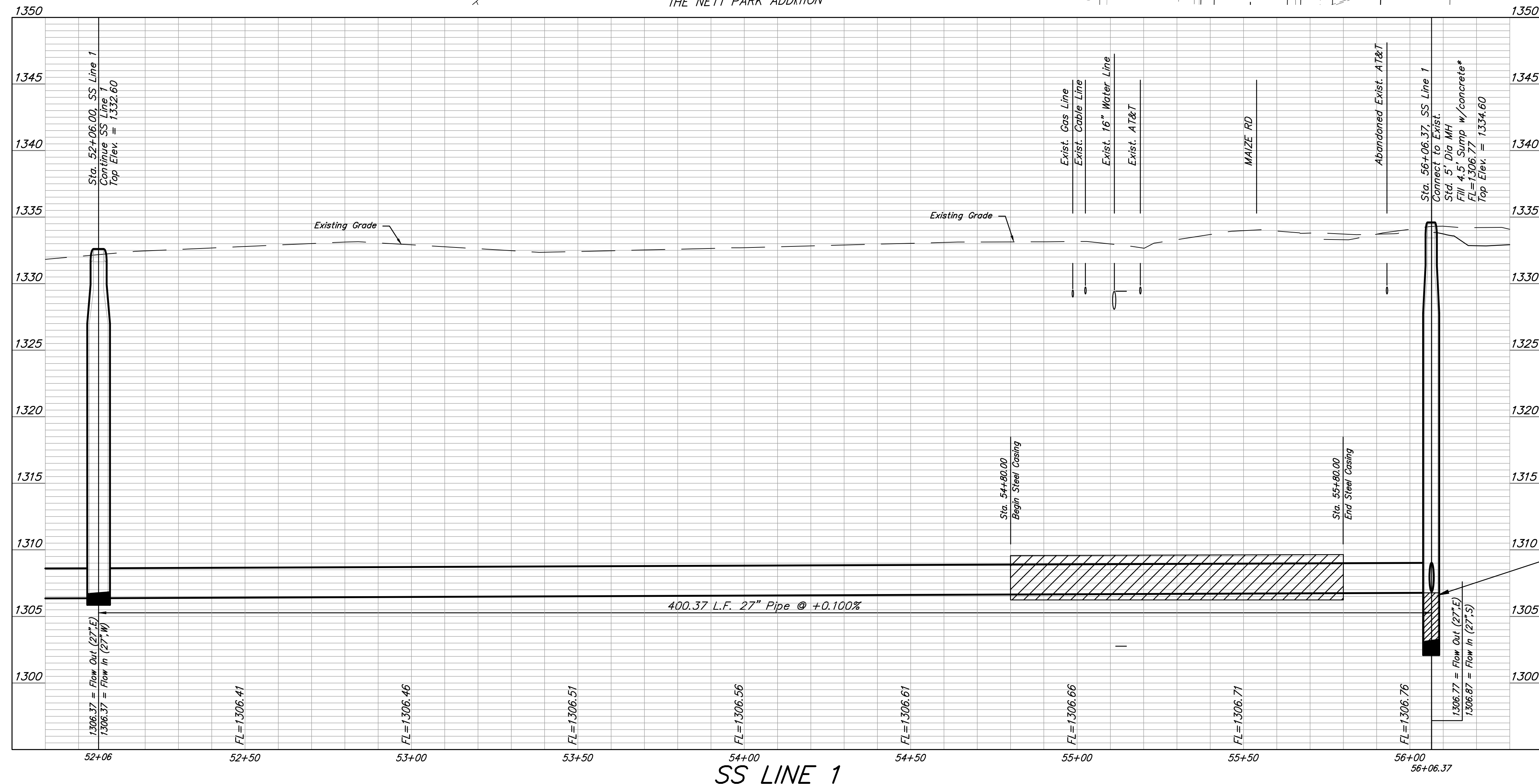


Benchmarks

BENCHMARKS:
 3/8" IP CNTR SEC. 5,
 TWP. 28-S, R-1-W.
 Elev. = 1315.56 NAVD88

Mag Disk in edge of Asphalt,
 755± E. of Cntr Sec. 5,
 TWP. 28-S, R-1-W &
 188± S. of N. line, SE1/4,
 Sec. 5, TWP. 8-S, R-1-W.
 Elev. = 1305.61 NAVD88

#4 IP NE Cor., SW1/4,
 Sec. 5, TWP. 28-S, R-1-W.
 Elev. = 1334.01 NAVD88



* Fill 4.5' Sump with Concrete.
 Shape Invert to Flow (E)
 Item to be Paid for as
 "Fill MH Sump" Lump Sum
 Bid Item.

SS LINE 1

Baughman Company, P.A.
 ENGINEERS, ARCHITECTS, PLANNERS, SURVEYORS, LANDSCAPE ARCHITECTS
 1111 S. WILSON ST., SUITE 200, WICHITA, KS 67202
 316.262.0146
 www.baughmanpa.com

Schulte-Johnson 2nd Addition
SS LINE 1
 Sanitary Sewer Line Improvements



