

**GENERAL NOTES:**

1. Contractor will be required to provide notice to utility companies a minimum of seventy-two (72) hours prior to any excavation, as follows:

- Kansas One-Call 687-2470
- The Contractor must notify the following in case of an emergency:
- Cox Communications 262-4270
- Kansas Gas Service 1-888-482-4950
- Everg 383-8650
- Black Hills 1-800-303-0357
- AT&T 268-2245
- City of Wichita Water Dept. 268-4563
- City of Wichita Sewer Maint. 268-4024
- City of Wichita Storm Sewer Maint. 268-4090
- City of Wichita Traffic Maint. 268-4034
- Conoco Phillips Pipeline Co. 1-877-267-2290
- Southern Star Pipeline Co. 529-6600
- Kinder-Morgan Pipeline Co. 1-888-844-5658

2. Utility service lines, poles, valve boxes, meters, and etcetera are to be adjusted as necessary by others prior to construction unless the plans specifically call for their adjustment by the Contractor or unless the plans specifically identify a utility to be adjusted by its owner during construction. Existing utilities and their location, as shown on the plans, represent the best information obtainable for design. The Contractor will be required to work around existing utilities within the right-of-way which do not conflict with proposed construction.

3. Rubble from the removal of miscellaneous structures and excess excavation which is to be wasted shall be disposed of on sites to be provided by the Contractor. These sites shall be approved by the Engineer as to suitability, appearance and site location. Locations, in the opinion of the Engineer, that will leave an unsightly appearance will not be approved. All disposal sites must be approved by the Kansas Department of Health and Environment. Material either stockpiled or disposed of in a flood plain would require a Kansas State Board of Agriculture permit. Any material dumped in waters of the United States or wetlands is subject to U.S. Corps of Engineers permitting regulations. Any material buried or stockpiled beyond approved construction limits would require additional archaeological investigations unless buried in a previously approved borrow location.

4. Trees and shrubs in public right-of-way which are in direct conflict with proposed new construction shall be removed by the Contractor with the Engineer's approval. Trees and shrubs which are not in direct conflict with proposed new construction shall be saved and protected from damage.

5. The Contractor shall give all property owners and/or tenants of developed property abutting the construction of this project a minimum of ten (10) days notice prior to start of construction.

6. The Contractor shall be responsible for preserving property irons. The Contractor will be required to re-establish any property irons which are damaged or destroyed by his construction operations. Such irons shall be re-established by a licensed land surveyor in accordance with state laws.

7. All existing and proposed erosion control measures including silt fencing, erosion control mat, straw bales, inlet barriers, and const. entrance shall be maintained throughout construction by the contractor and until project is accepted by the City of Wichita. The on-site engineer shall complete weekly reports on the status of erosion control measures. The contractor shall be required to comply with maintenance and/or replacement of erosion control measures as determined by the on-site engineer until project is accepted by City of Wichita. Maintenance and/or replacement of erosion control measures to be paid by L.S. bid item "Maintain Existing BMP's."

8. All excess excavation shall remain on-site and shall be stockpiled or spread at a location determined by the Engineer.

9. The Contractor shall be responsible for maintaining continuous flow of sewage through construction. Contractor's proposed method for maintaining sewage flow shall be approved by the Engineer. Cost of maintaining flow of sewage through construction will not be paid for directly and this cost shall be considered as subsidiary to the other pay items of work.

10. All areas disturbed during construction shall be seeded, mulched, and fertilized as indicated on the Stormwater Sewer project.

11. Trees and shrubs in the work area which are in direct conflict with proposed new construction shall be removed by the Contractor ONLY with the Developer or Baughman Company approval. Trees and shrubs which are not in direct conflict with proposed new construction shall be saved and protected from damage. If trimming is necessary, a chainsaw shall be used. Breaking limbs with equipment will not be allowed. An on-site pre-construction meeting will occur prior to any construction to discuss tree removal, tree protection, and tree trimming.

12. Sales tax exemption does not apply to this project.

13. Contractor shall contact Developer and coordinate back of curb protection installation & seeding schedule to avoid conflict with Evergy and Kansas Gas Service staking and trenching.

14. The Developer for this project is Jay Russell. P.O. Box 75337, Wichita, KS 67272 PH# (316) 990-2105 Email j@russellco.com

# SANITARY SEWER IMPROVEMENTS to serve NORTHGATE 6TH ADDITION

## CITY OF WICHITA, KANSAS

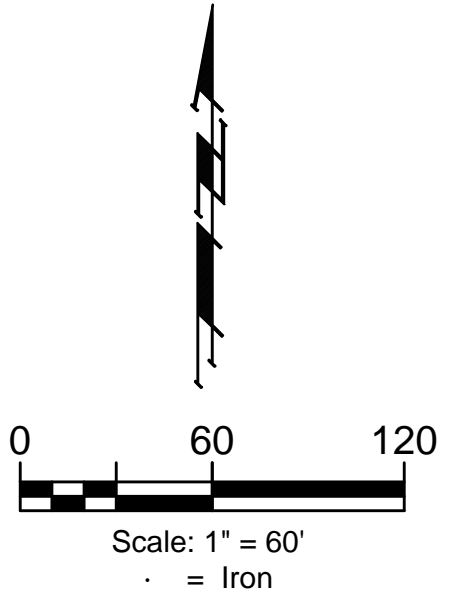
Gary Janzen, P.E. City Engineer  
Project Number: 468-2022-024788  
Org Code Number: 47267022  
Munis Number: E2078

APPROVED AS NOTED  
BY WICHITA PUBLIC WORKS ENGINEERING

Engineering \_\_\_\_\_

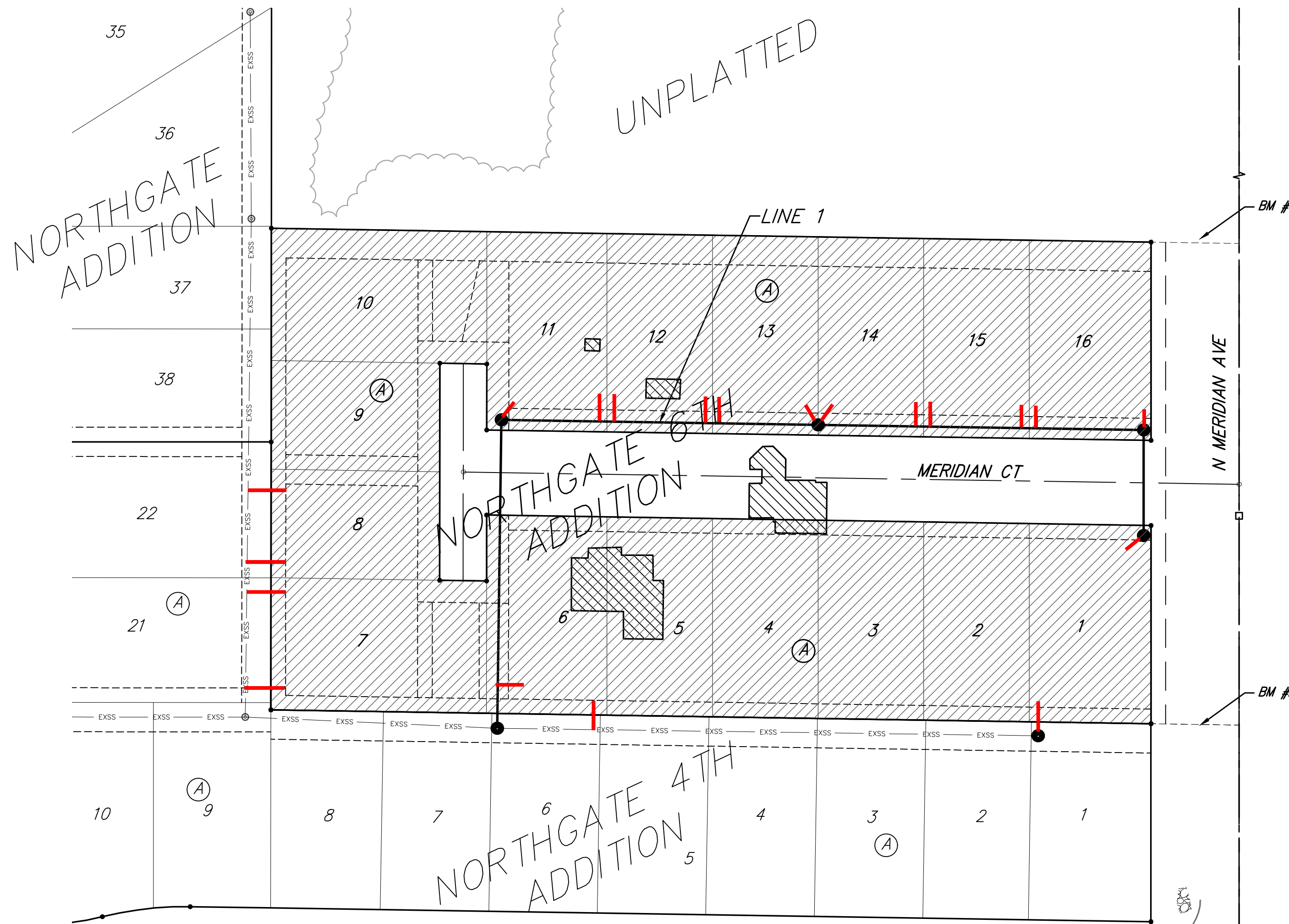
An approved copy of these plans signed by City staff are required on-site.

Mies Construction - Contractor  
S. Lowe - City of Wichita, Field Project Engineer  
R. Carillo - City of Wichita, Inspector  
As-built  
Stubs & Risers  
Release Date (for connection purposes only): 4/5/2023  
Completion Date:  
pdf: apr 4/5/2023



**SHEET INDEX**

Title Sheet	1
Line 1	2
Services	3
Erosion Control Plan	4
Erosion Control BMP Details	5-9
Standard Manhole Detail	10
Frame & Cover Detail	11
Vertical Riser Detail	12
Coordinate Sheet	13
Copy of Plat	14

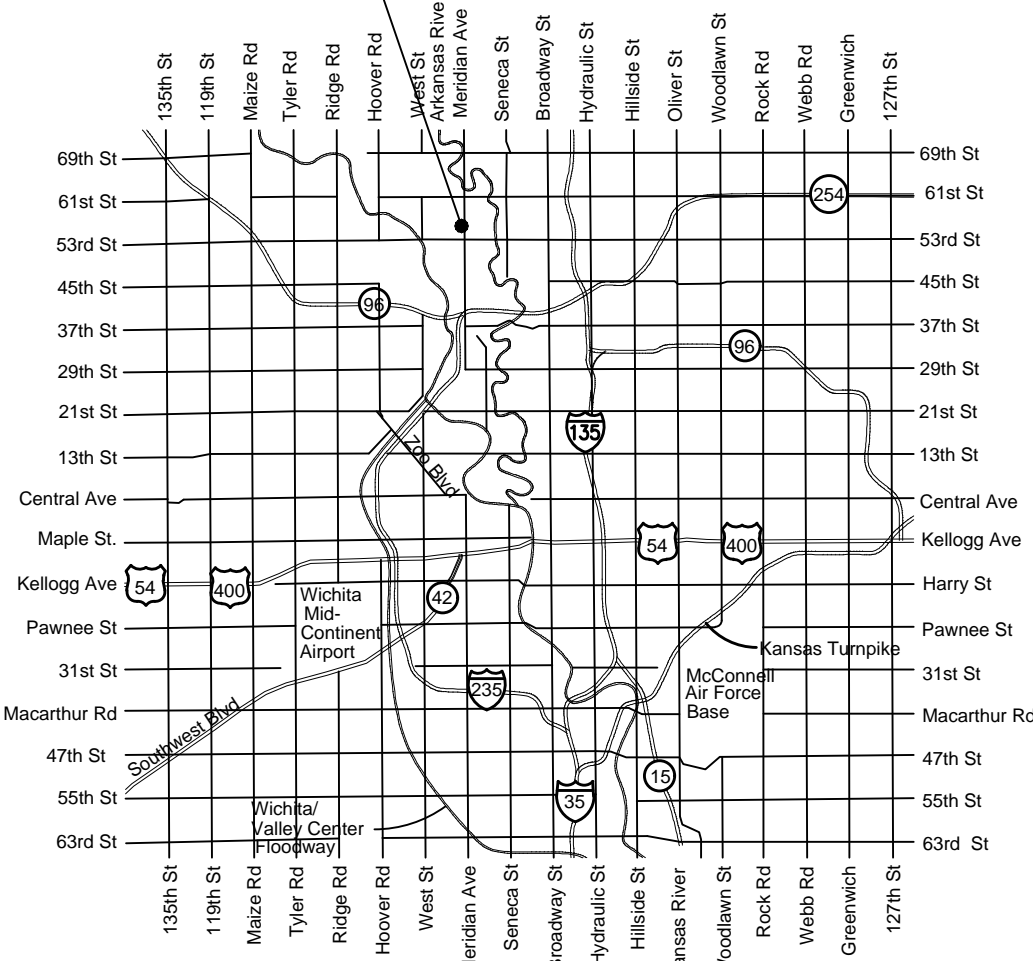


**BENCHMARKS**

CROSS CUT IN SQUARE ON TOP OF CURB NEAR NE COR. OF LOT 16, BLOCK A, Northgate 6th Addition ELEV. 1335.97 (NAVD88)

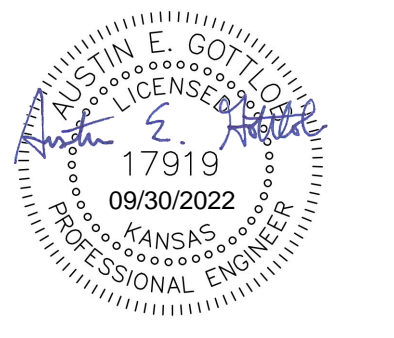
CROSS CUT IN SQUARE ON TOP OF CURB NEAR SE COR. OF LOT 1, BLOCK A, Northgate 6th Addition ELEV. 1334.28 (NAVD88)

**SITE**



**VICINITY MAP**

**BENEFIT DISTRICT**



September 29, 2022

**BAUGHMAN COMPANY**  
315 Ellis St. Wichita, KS 67211 316-262-7271  
BaughmanCo.com

E:\Projects\Northgate 6th Addition\_22-04-P777\Engineering\Phase 1\SS\_22-02-08-E250\SS Plans.dwg



BENCHMARKS:  
CROSS CUT IN SQUARE ON TOP OF CURB NEAR NE COR. OF LOT 16, BLOCK A, Northgate 6th Addition ELEV. 1335.97 (NAVD88)

CROSS CUT IN SQUARE ON TOP OF CURB NEAR SE COR. OF LOT 1, BLOCK A, Northgate 6th Addition ELEV. 1334.28 (NAVD88)

Sta. 0+00.0, Begin Line 1  
Connect to Existing Manhole and Extend 8" Pipe North. Core New Openings, Seal and Grout Around New Pipe Using Non-Shrink Grout. Re-Shape Invert As Necessary. Cost of Coring, Sealing, Grouting, and Re-Shaping Invert to be incidental to "Connect to Existing" Bid Item.  
Ex. Top Elev. = 1336.43

Riser 1, Lot 6, Blk A  
Dist. from Main to Riser: 7' Rt.  
Distance from USMH: 180'  
Distance from DSMH: 30'

All trench and manhole excavation areas from Sta. 2+10.3 to Sta. 6+48.3, Line 1 shall be backfilled with sand. The sand backfill shall be water-jetted and vibrated during backfilling. All costs shall be paid for as L.F. "Fill, Sand (Flushed & Vibrated)".

Contractor to remove, repair, and replace existing sod and sprinkler lines/heads damaged during construction for any disturbed areas on Lots 6 & 7, Block A of Northgate 4th Addition. All costs shall be included in the L.S. bid item "Site Restoration".

Existing trees which are in direct conflict with proposed new construction shall be removed by the Contractor ONLY with approval of the Engineer. Trees not in direct conflict with proposed new construction shall remain and be protected from damage. Cost shall be included in bid item "Site Clearing".

2-foot minimum vertical separation between water service lines and all sanitary sewer lines shall be maintained at crossings.  
10-foot horizontal separation between water service lines and all sanitary sewer lines and manholes shall be maintained. Distances are to be measured from edge-to-edge, at the closest point.

SEWER SERVICE TABLE

NUMBER	TYPE	LOCATION				FOR INFORMATION ONLY	
		LOT NO.	BLOCK NO.	LINE NO.	STATION/DIRECTION	APPROXIMATE LENGTH 4" PIPE VERTICAL	HORIZONTAL
1	8" X 4" Tee	6	A	1	0+30.0/Rt.	6.6	7.3
2	4" Stub	11	A	1	2+10.3/Lt.	6.6	10.0
3	8" X 4" Tee	11	A	1	2+77.3/Lt.	5.4	8.0
4	8" X 4" Tee	12	A	1	2+87.3/Lt.	5.7	8.0
5	8" X 4" Tee	12	A	1	3+49.3/Lt.	5.4	8.0
6	8" X 4" Tee	13	A	1	3+59.3/Lt.	5.8	8.0
7	4" Stub	13	A	1	4+26.2/Lt.	7.0	10.0
8	4" Stub	14	A	1	4+26.2/Lt.	7.0	10.0
9	8" X 4" Tee	14	A	1	4+93.2/Lt.	4.7	8.0
10	8" X 4" Tee	15	A	1	5+03.2/Lt.	4.5	8.0
11	8" X 4" Tee	15	A	1	5+65.2/Lt.	3.8	8.0
12	8" X 4" Tee	16	A	1	5+75.2/Lt.	3.2	8.0
13	4" Stub	16	A	1	6+48.3/Lt.	2.2	8.0
14	4" Stub	1	A	1	7+20.3/Rt.	2.6	5.0

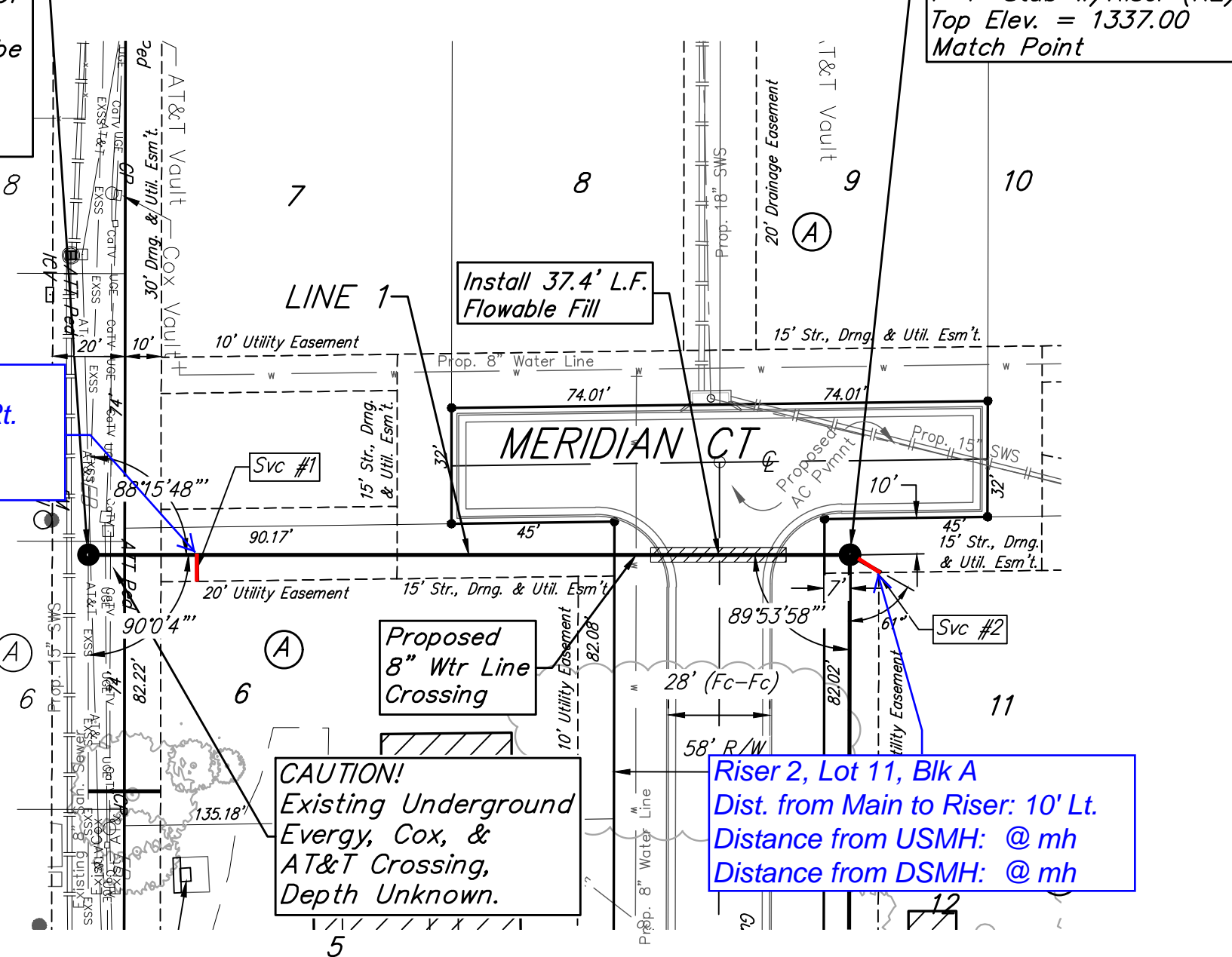
NOTE: Vertical Riser Pipe shall be extended to 2' minimum above ground water elevation and 4' maximum below proposed ground elevation.

Existing Structures and Utilities to be Removed in the Stormwater Sewer Project. See Mass Grading General Notes for Details.

CAUTION!  
Existing Underground Every, Cox, & AT&T Crossing, Depth Unknown.

Contractor to verify depth and location of Every, Cox, & AT&T lines prior to construction. Coordinate if relocation or temporary removal of equipment/lines is necessary. Contact a minimum of three weeks prior to construction.  
Every - Heide Bryan (316-261-6354)  
Cox - Chris Breeden (316-209-1318)  
AT&T - Jason Edwards (316-268-2008)

NORTHGATE 6TH ADDITION



Sta. 2+10.3, Line 1  
Const. Std. Manhole  
1-4" Stub w/Riser (NE)  
Top Elev. = 1337.00  
Match Point

Riser 2, Lot 11, Blk A  
Dist. from Main to Riser: 10' Lt.  
Distance from USMH: @ mh  
Distance from DSMH: @ mh

Sta. 2+10.3, Line 1  
Top Elev. = 1337.00  
Match Point

Riser 3, Lot 11, Blk A  
Dist. from Main to Riser: 8' Lt.  
Distance from USMH: 67'  
Distance from DSMH: 149'

Riser 5, Lot 12, Blk A  
Dist. from Main to Riser: 8' Lt.  
Distance from USMH: 139'  
Distance from DSMH: 77'

Riser 6, Lot 13, Blk A  
Dist. from Main to Riser: 8' Lt.  
Distance from USMH: 149'  
Distance from DSMH: 67'

Sta. 4+26.2, Line 1  
Const. Std. Manhole  
2-4" Stubs w/Riser (NW & NE)  
Top Elev. = 1338.50

Riser 4, Lot 12, Blk A  
Dist. from Main to Riser: 8' Lt.  
Distance from USMH: 77'  
Distance from DSMH: 139'

Riser 7, Lot 13, Blk A  
Dist. from Main to Riser: 10' Lt.  
Distance from USMH: @ mh  
Distance from DSMH: @ mh

Riser 8, Lot 14, Blk A  
Dist. from Main to Riser: 10' Lt.  
Distance from USMH: @ mh  
Distance from DSMH: @ mh

Riser 11, Lot 15, Blk A  
Dist. from Main to Riser: 8' Lt.  
Distance from USMH: 139'  
Distance from DSMH: 83'

Riser 12, Lot 16, Blk A  
Dist. from Main to Riser: 8' Lt.  
Distance from USMH: 149'  
Distance from DSMH: 73'

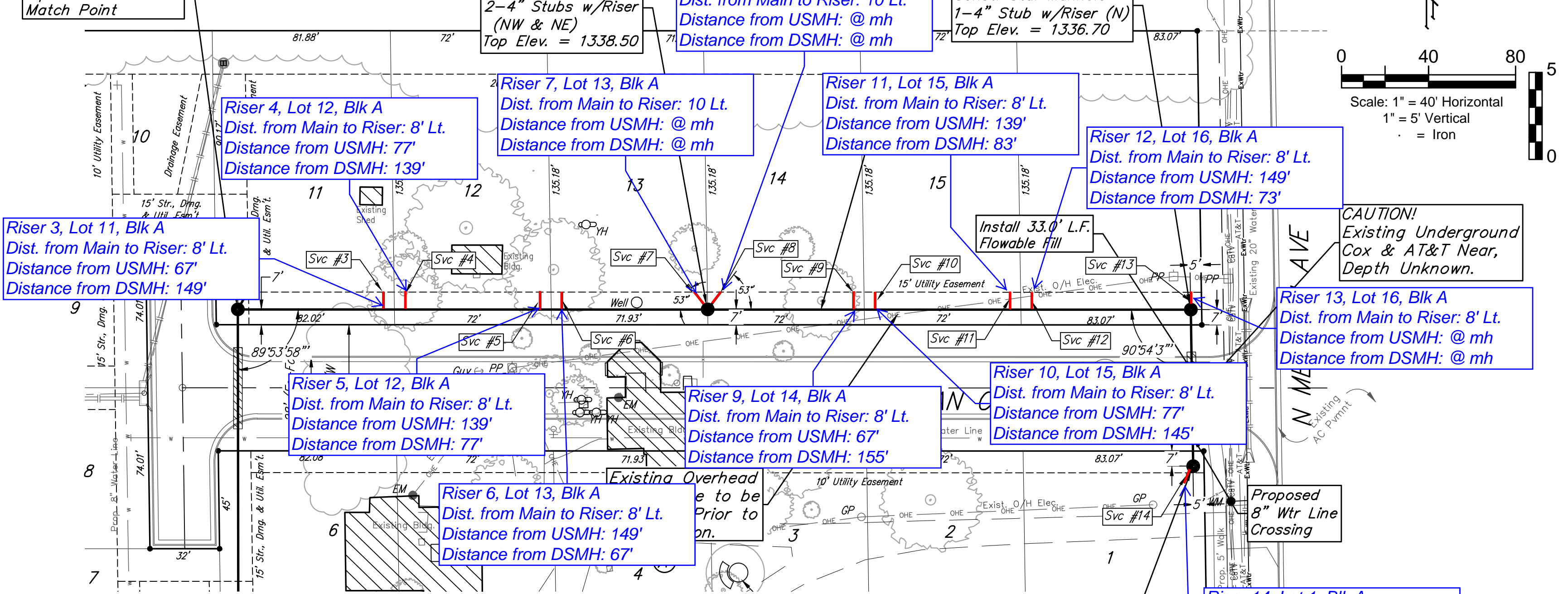
Riser 13, Lot 16, Blk A  
Dist. from Main to Riser: 8' Lt.  
Distance from USMH: @ mh  
Distance from DSMH: @ mh

Riser 14, Lot 1, Blk A  
Dist. from Main to Riser: 5' Rt.  
Distance from USMH: @ mh  
Distance from DSMH: @ mh

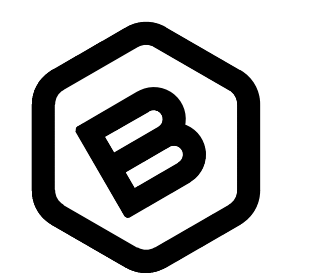
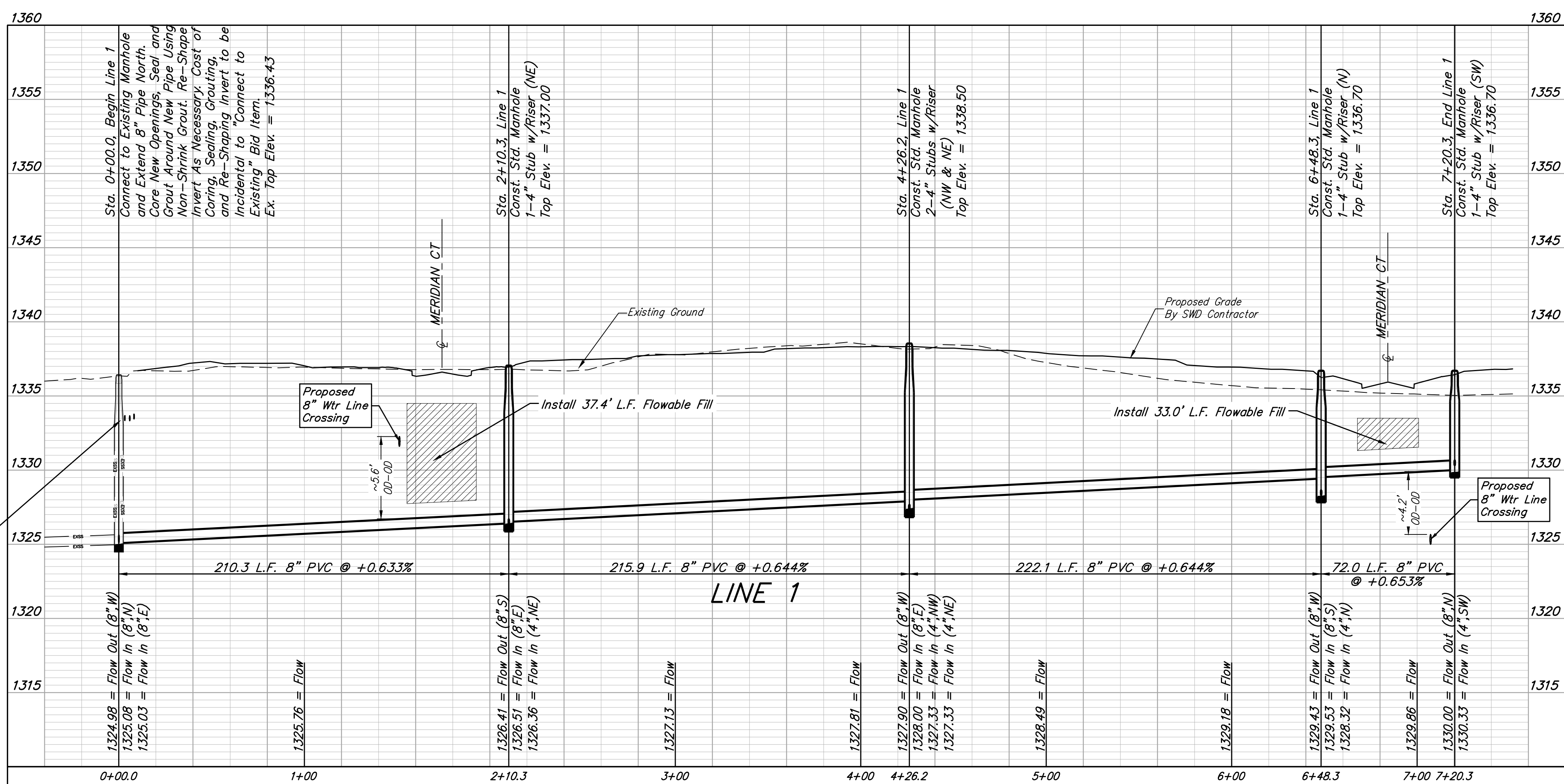
Sta. 6+48.3, Line 1  
Const. Std. Manhole  
1-4" Stub w/Riser (N)  
Top Elev. = 1336.70

Riser 10, Lot 15, Blk A  
Dist. from Main to Riser: 8' Lt.  
Distance from USMH: 77'  
Distance from DSMH: 145'

Riser 9, Lot 14, Blk A  
Dist. from Main to Riser: 8' Lt.  
Distance from USMH: 67'  
Distance from DSMH: 155'



NORTHGATE 6TH ADDITION



BAUGHMAN COMPANY

315 Ellis St.  
Wichita, KS 67211  
316-262-7271  
BaughmanCo.com

NORTHGATE 6TH ADDITION

LINE 1

SANITARY SEWER IMPROVEMENTS

PROJECT NUMBER:  
468-2022-024788

DESIGN: AEG DRAWN: HJW

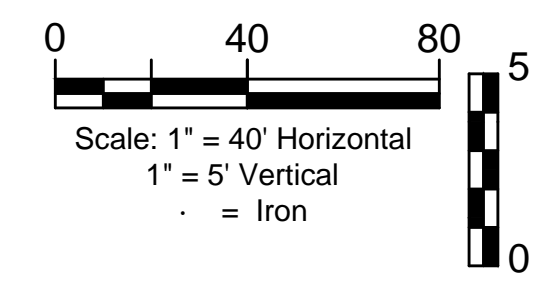
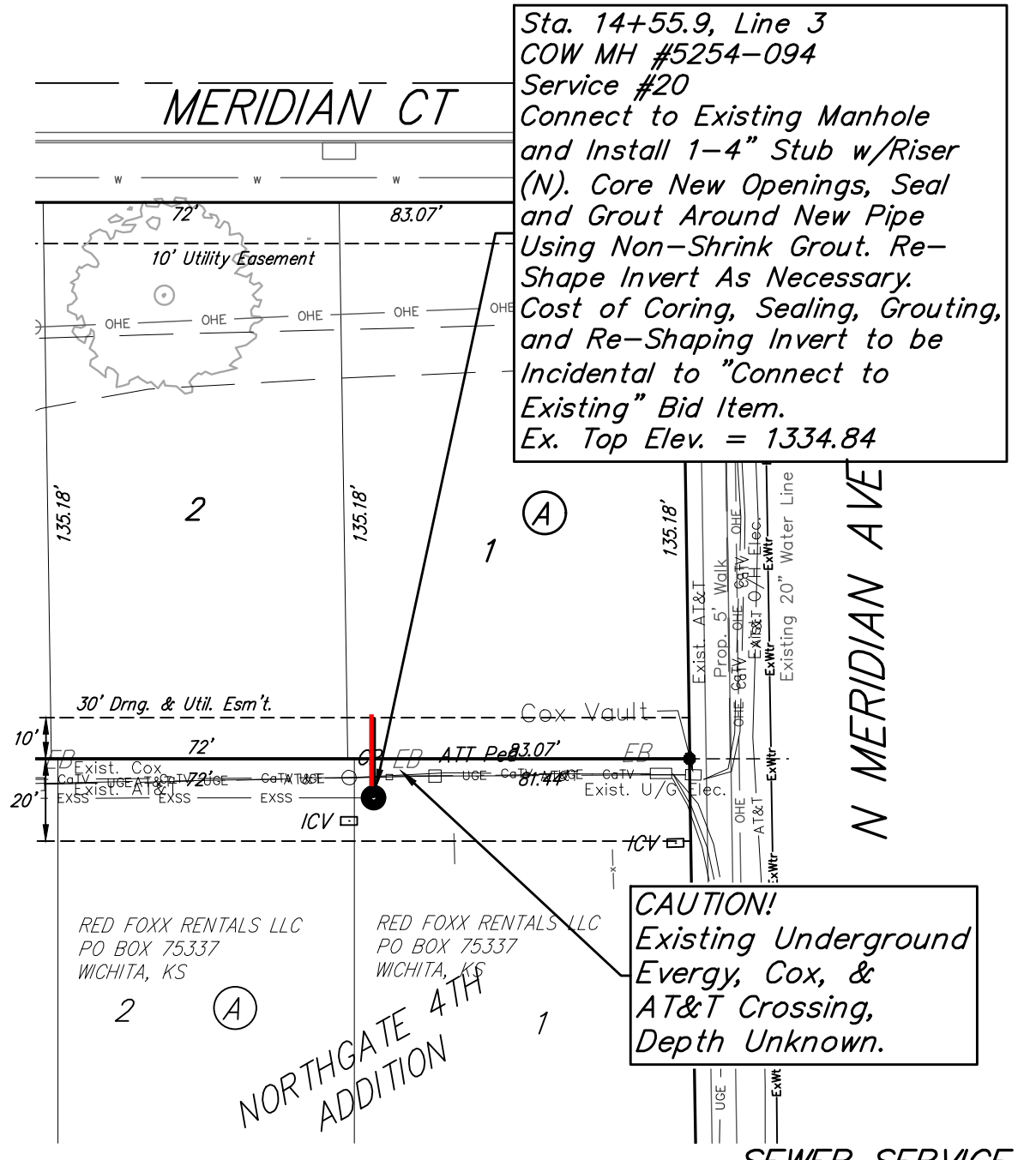
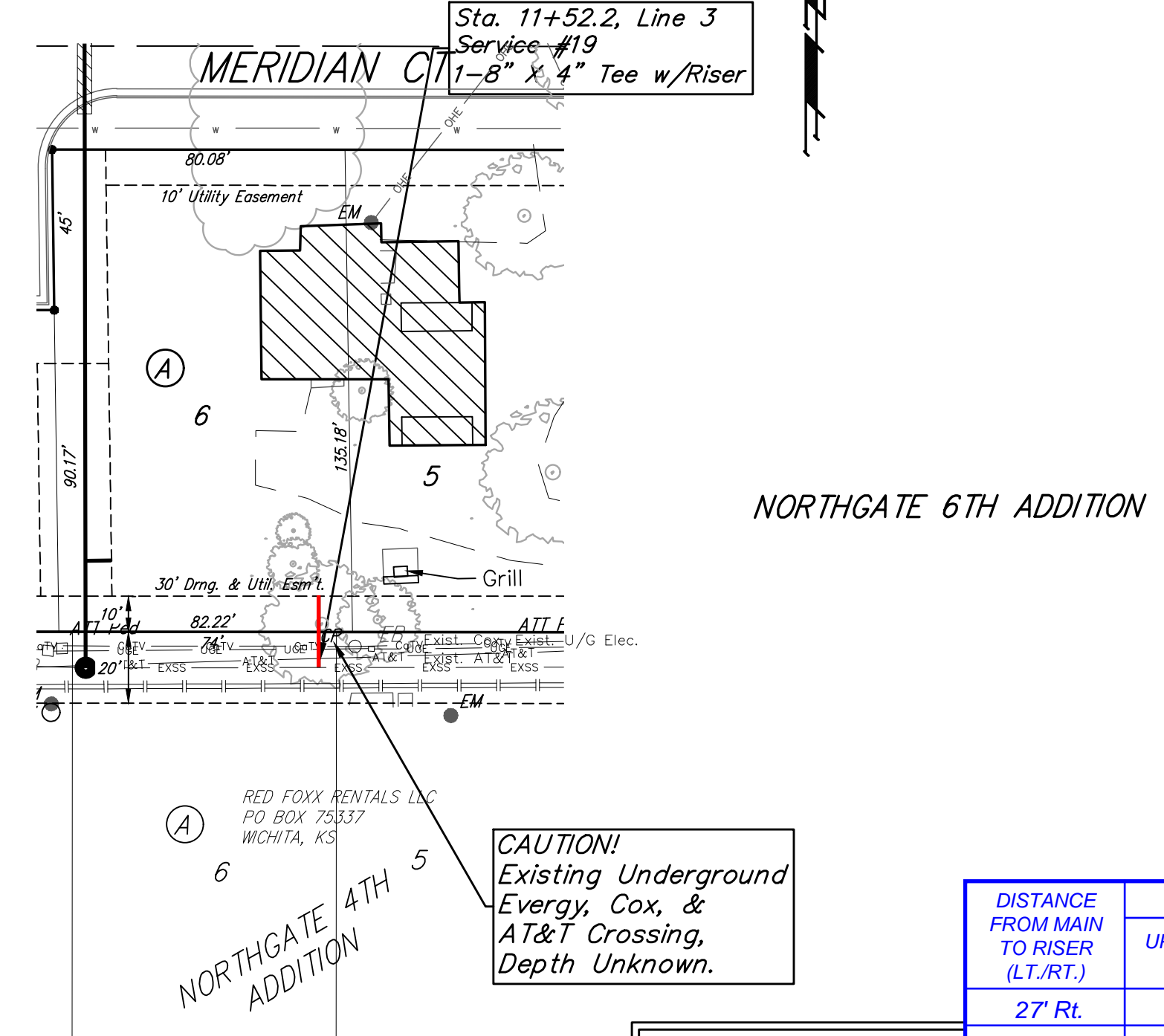
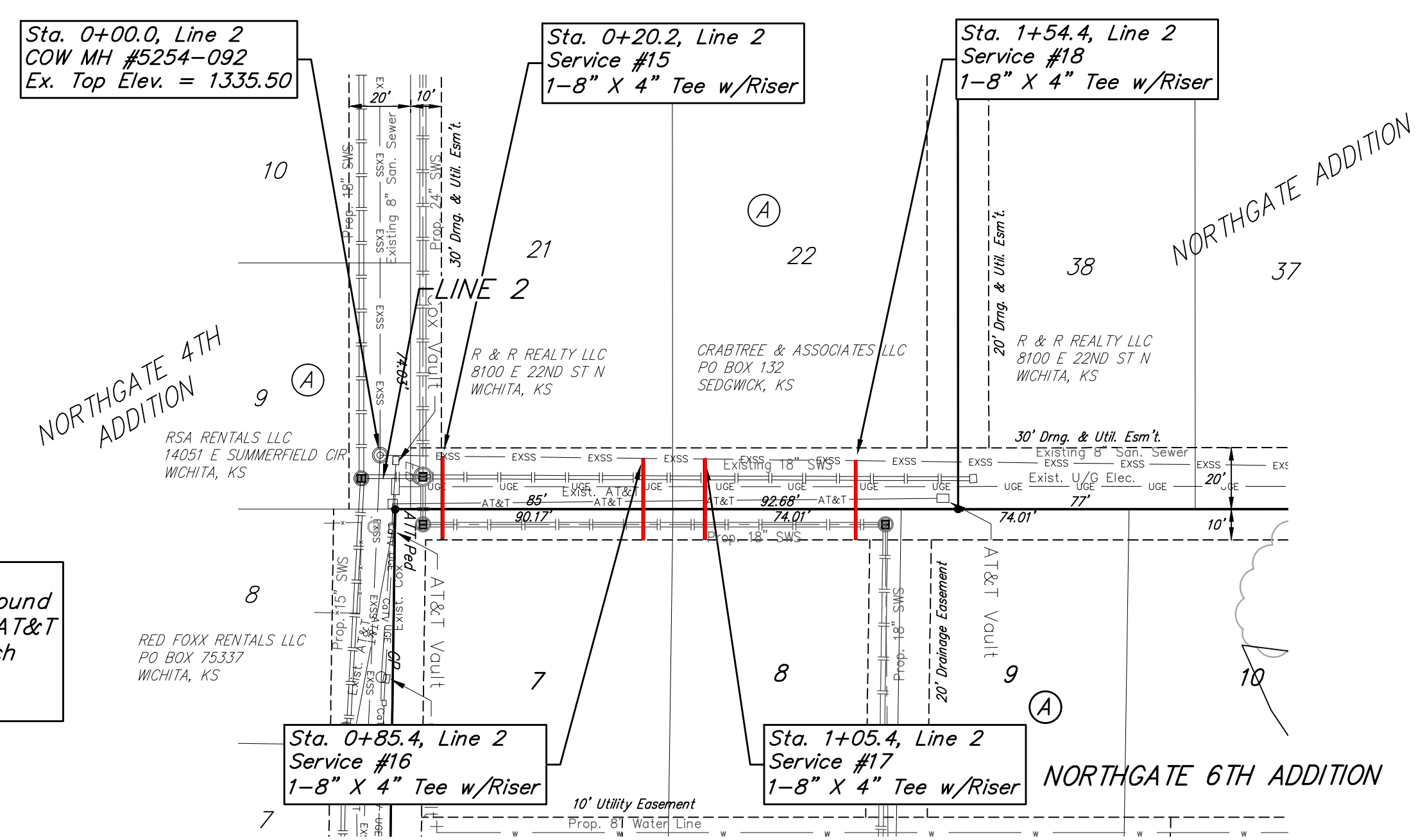
DATE: September 29, 2022

SHEET OF  
2 14

File: E:\Projects\Northgate 6th Addition\_22-04-P777\Engineering\Phase 1\SS\_22-08-E252\SS Plans.dwg

**BENCHMARKS:**  
 CROSS CUT IN SQUARE ON TOP OF CURB NEAR NE COR. OF LOT 16, BLOCK A, Northgate 6th Addition ELEV. 1335.97 (NAVD88)

CROSS CUT IN SQUARE ON TOP OF CURB NEAR SE COR. OF LOT 1, BLOCK A, Northgate 6th Addition ELEV. 1334.28 (NAVD88)



**CAUTION!**  
Existing Underground Every, Cox, & AT&T Crossings at Each Service Location, Depth Unknown.

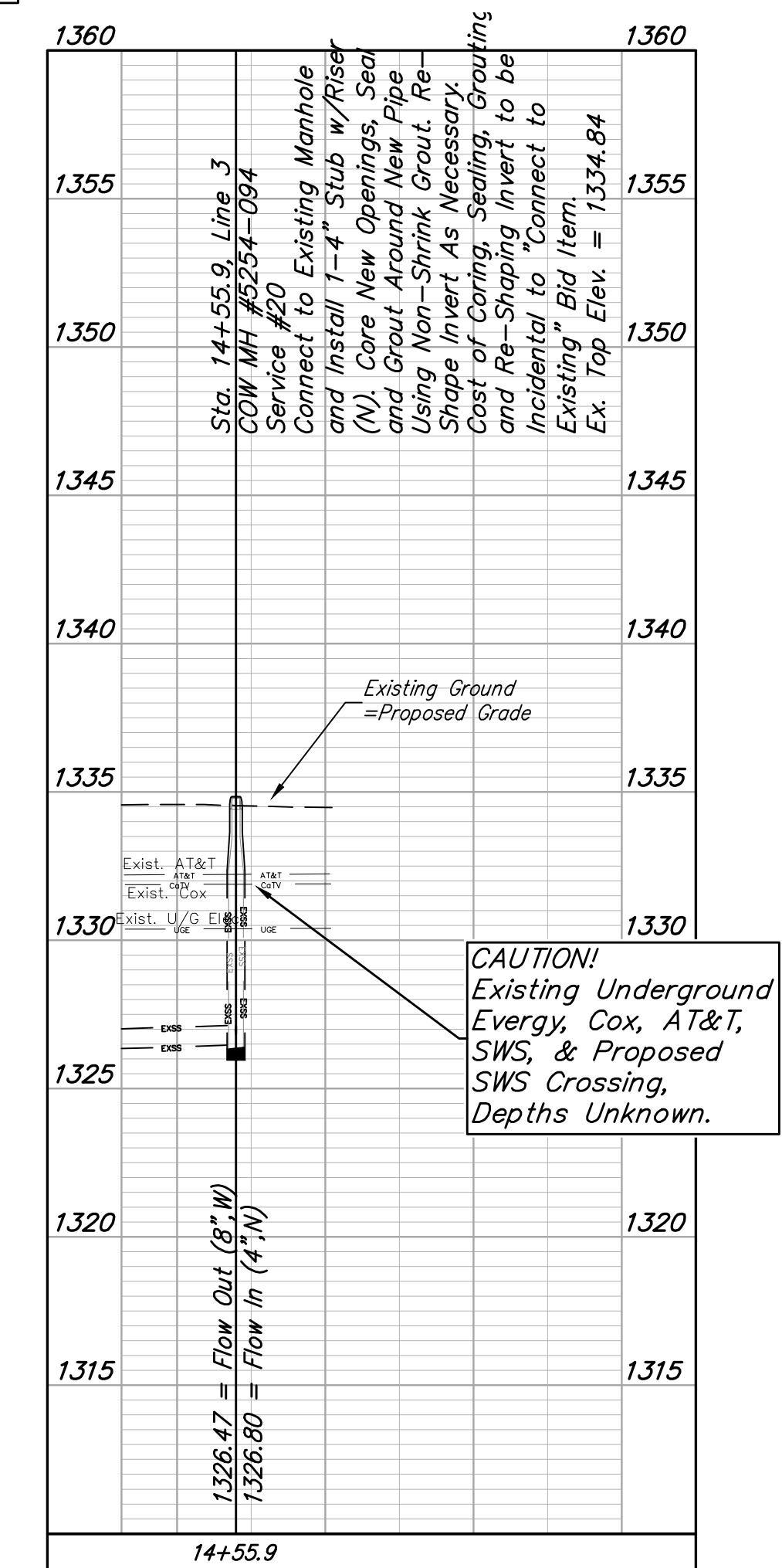
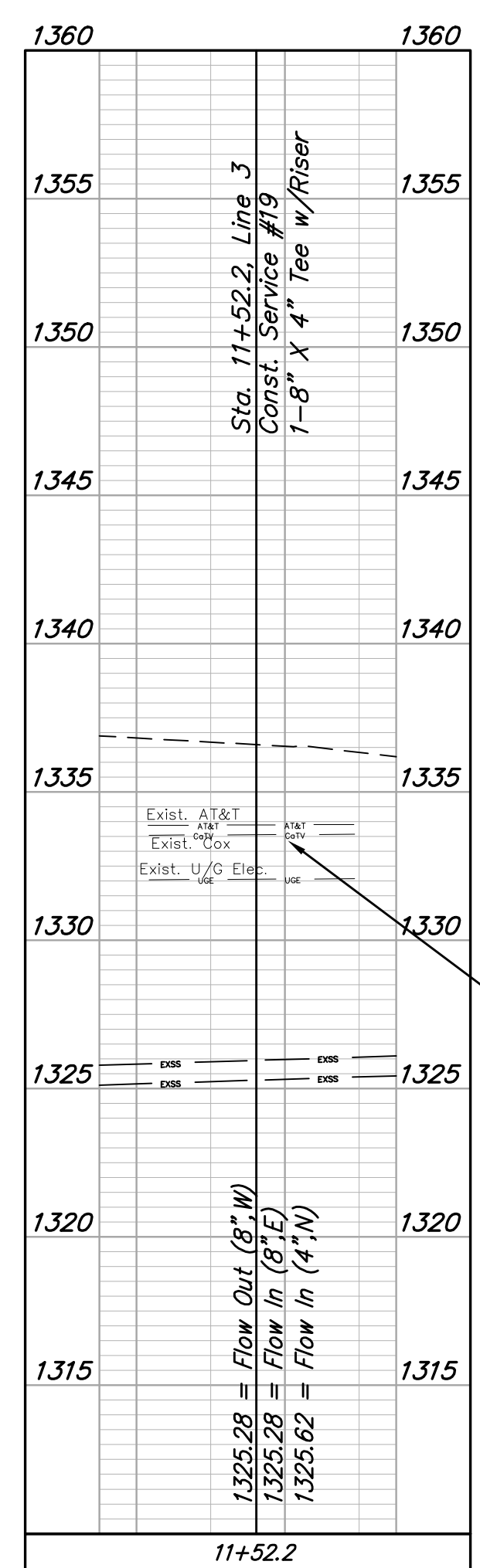
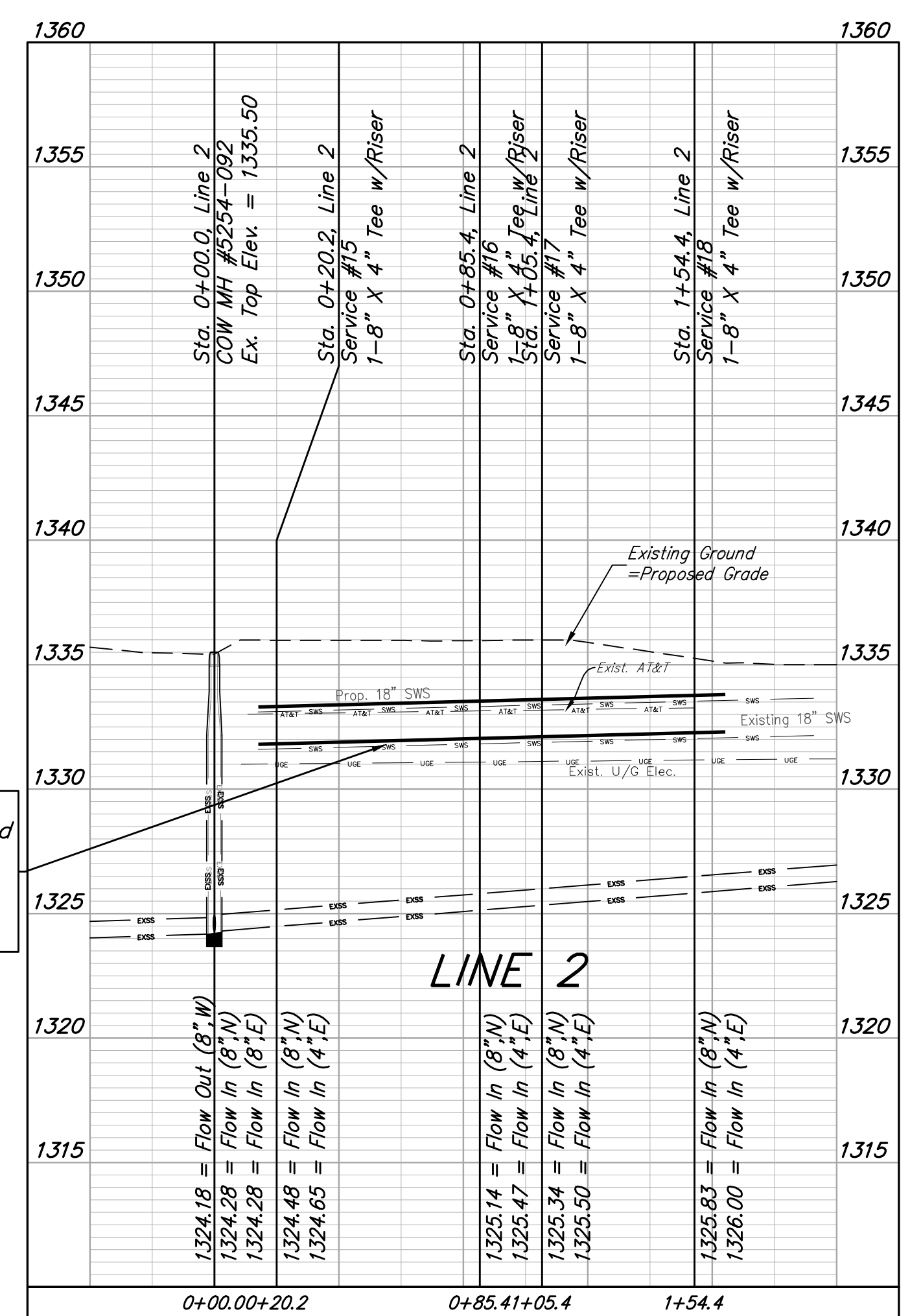
**CAUTION!**  
Existing Underground Every, Cox, & AT&T Crossing, Depth Unknown.

**CAUTION!**  
Existing Underground Every, Cox, & AT&T Crossing, Depth Unknown.

Contractor to verify depth of Cox, & AT&T lines prior to construction. Coordinate if relocation of equipment/lines is necessary. Notify utility owners of three weeks prior to construction.  
 Every - Heide Bryan (316-268-2008)  
 Cox - Chris Breeden (316-209-1318)  
 AT&T - Jason Edwards (316-268-2008)

DISTANCE FROM MAIN TO RISER (LT./RT.)	DISTANCE FROM		NUMBER	TYPE	LOCATION				FOR INFORMATION ONLY	
	UPSTREAM MH	DOWNSTREAM MH			LOT NO.	BLOCK NO.	LINE NO.	STATION / DIRECTION	APPROXIMATE LENGTH 4" PIPE	
27' Rt.	20'	319'	15	8" X 4" Tee	7	A	2	0+20.2/Rt.	5.8	26.5
27' Rt.	85'	254'	16	8" X 4" Tee	7	A	2	0+85.4/Rt.	6.4	26.5
27' Rt.	105'	234'	17	8" X 4" Tee	8	A	2	1+05.4/Rt.	6.3	26.5
27' Rt.	154'	185'	18	8" X 4" Tee	8	A	2	1+54.4/Rt.	5.4	26.5
20' Lt.	63'	302'	19	4" Stub	6	A	3	11+52.2/Lt.	7.1	20.0
20' Lt.	@ mh	@ mh	20	4" Stub	1	A	3	14+55.9/Lt.	4.2	20.0

NOTE: Vertical Riser Pipe shall be extended to 2' minimum above ground water elevation and 4' maximum below proposed ground elevation.



**CAUTION!**  
Existing Underground Every, AT&T, SWS, & Proposed SWS Crossing, Existing Depths Unknown.

**CAUTION!**  
Existing Underground Every, Cox, AT&T, SWS, & Proposed SWS Crossing, Depths Unknown.

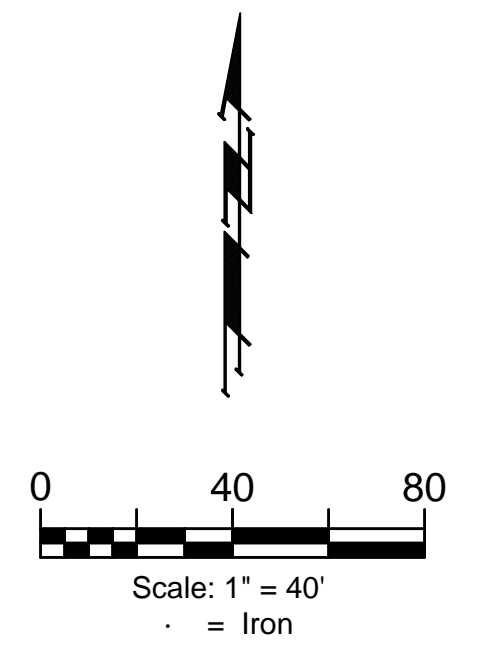
**CAUTION!**  
Existing Underground Every, Cox, AT&T, SWS, & Proposed SWS Crossing, Depths Unknown.

**BAUGHMAN COMPANY**  
 315 Ellis St.  
 Wichita, KS 67211  
 316-262-7271  
 BaughmanCo.com  
 NORTHGATE 6TH ADDITION  
**SERVICES**  
 SANITARY SEWER IMPROVEMENTS  
 PROJECT NUMBER: 468-2022-024788  
 DESIGN: AEG DRAWN: HJW  
 DATE: September 29, 2022  
 SHEET 3 OF 14

File: E:\Projects\Northgate 6th Addition\_22-04-P777\Engineering\Phase 1\SS-22-08-E252\SS Plans.dwg

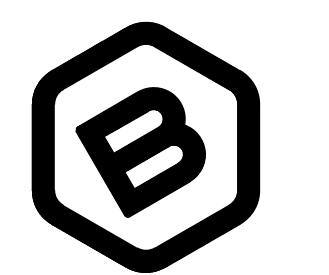
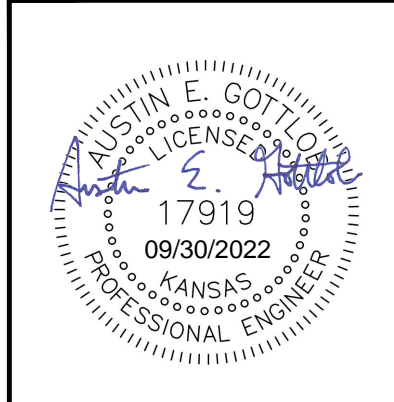
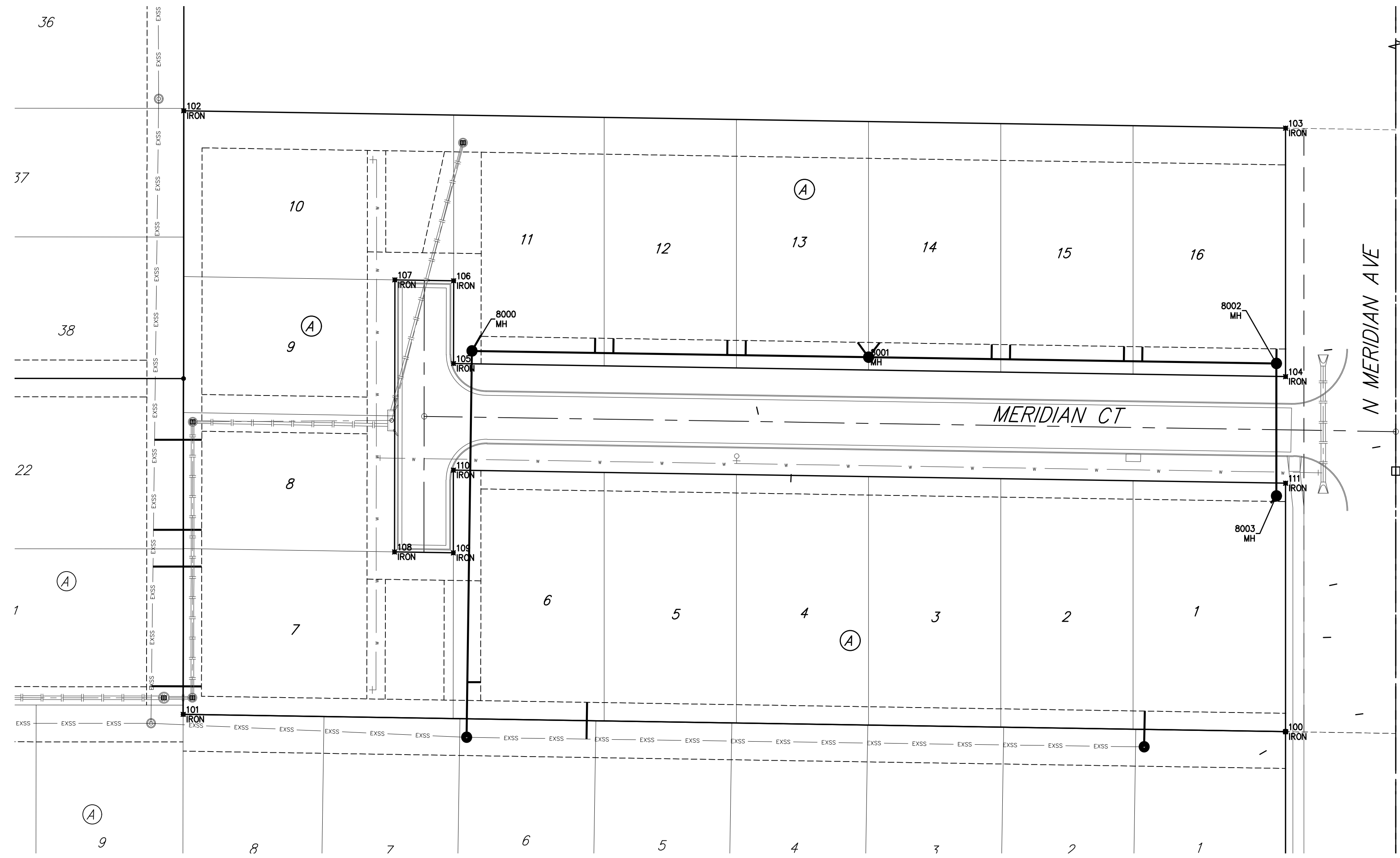
BENCHMARKS:  
 CROSS CUT IN SQUARE ON TOP OF CURB NEAR NE COR. OF LOT 16, BLOCK A, Northgate 6th Addition ELEV. 1,335.97 (NAVD88)

CROSS CUT IN SQUARE ON TOP OF CURB NEAR SE COR. OF LOT 1, BLOCK A, Northgate 6th Addition ELEV. 1,334.28 (NAVD88)



CONTROL			
Point #	Northing	Easting	Description
100	7,120.77	4,940.00	IRON
101	7,130.20	4,339.83	IRON
102	7,458.56	4,340.18	IRON
103	7,449.13	4,940.00	IRON
104	7,313.95	4,940.00	IRON
105	7,321.07	4,487.03	IRON
106	7,366.08	4,487.08	IRON
107	7,366.58	4,455.08	IRON
108	7,218.57	4,454.93	IRON
109	7,218.06	4,486.93	IRON
110	7,263.07	4,486.97	IRON
111	7,255.94	4,940.00	IRON

SS POINTS			
Point #	Northing	Easting	Description
8000	7,327.92	4,497.04	MH
8001	7,324.52	4,712.96	MH
8002	7,321.03	4,935.00	MH
8003	7,249.02	4,935.00	MH



**BAUGHMAN COMPANY**  
 315 Ellis St.  
 Wichita, KS 67211  
 316-262-7271  
 BaughmanCo.com

NORTHGATE 6TH ADDITION

**COORDINATES**

SANITARY SEWER IMPROVEMENTS

PROJECT NUMBER:  
 468-2022-024788

DESIGN: AEG DRAWN: HJW  
 DATE: September 29, 2022

SHEET OF  
 13 14

File: E:\Projects\Northgate 6th Addition\_22-04-P777\Engineering\Phase 1\SS\_22-08-E252\SS Plans.dwg