
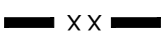
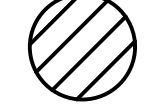
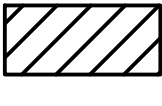
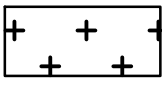

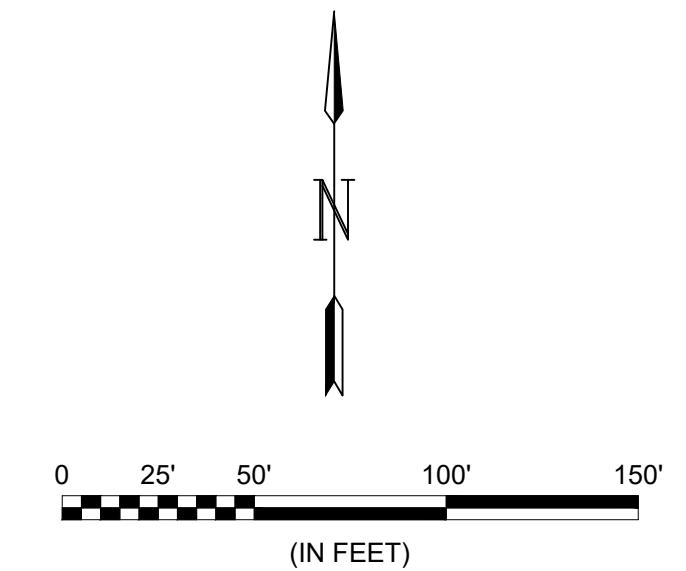


LEGEND

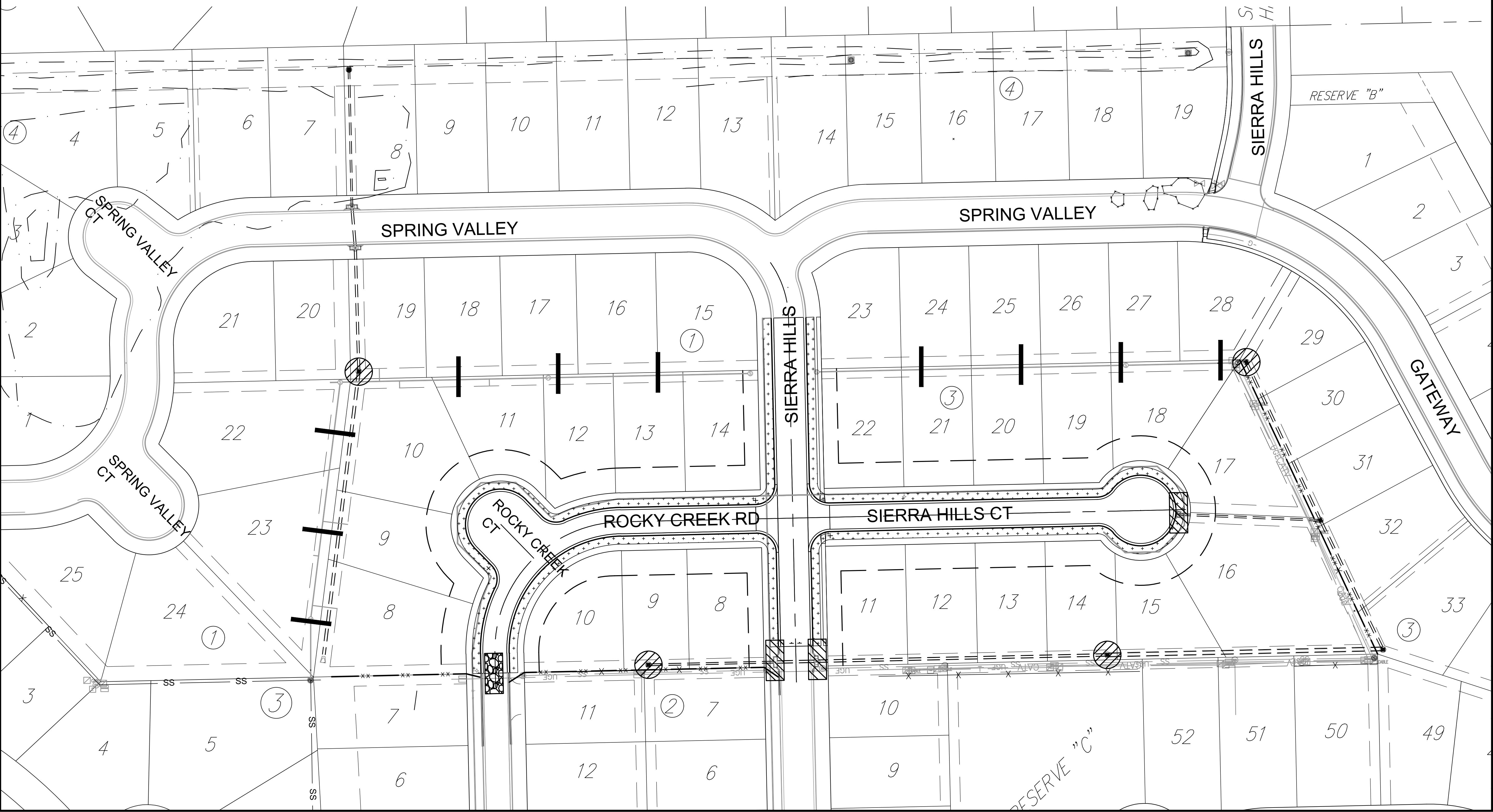
-  MAINTAIN CONSTRUCTION ENTRANCE ( 1 EACH )
-  MAINTAIN SILT FENCE ( 602 LF )
-  MAINTAIN DROP INLET PROTECTION ( 4 EACH )
-  MAINTAIN CURB INLET PROTECTION ( 3 EACH )
-  INSTALL CURLEX TYPE 1 BLANKET ( 1958 SY )
-  INSTALL LINEAR SEDIMENT BARRIERS ( 10 EACH )



© 2022 GARVER, LLC  
 THIS DOCUMENT, ALONG WITH THE IDEAS AND DESIGNS CONVEYED HEREIN, SHALL BE CONSIDERED INSTRUMENTS OF PROFESSIONAL SERVICE AND ARE PROPERTY OF GARVER, LLC. ANY USE, REPRODUCTION, OR DISTRIBUTION OF THIS DOCUMENT, ALONG WITH THE IDEAS AND DESIGN CONTAINED HEREIN, IS PROHIBITED UNLESS AUTHORIZED IN WRITING BY GARVER, LLC OR EXPLICITLY ALLOWED IN THE GOVERNING PROFESSIONAL SERVICES AGREEMENT FOR THIS WORK.

1995 Midfield Road  
 Wichita, KS 67209  
 (316) 264-8008

File: L:\2022\22T41020 - Bellechase 3rd Addition Phase 4\Drawings\C3DPAVING\EROSION CONTROL.dwg Last Save: 3/6/2023 10:11 AM Last saved by: MCarrara\Piedra  
 Last plotted by: Carrera-Piedra, Mariela Plot Style: 1:2.5849 Plot Date: 3/7/2023 10:48 AM Plotter used: None



REV.	DATE	DESCRIPTION	BY



CITY OF WICHITA  
 WICHITA, KANSAS  
 BELLECHASE THIRD  
 ADDITION PHASE 4  
 PAVING

EROSION CONTROL

JOB NO.: 22T41020  
 DATE: MARCH 2023  
 DESIGNED BY: E.JG  
 DRAWN BY: MCP

BAR IS ONE INCH ON ORIGINAL DRAWING  
 IF NOT ONE INCH ON THIS SHEET, ADJUST SCALES ACCORDINGLY.

DRAWING NUMBER

SHEET NUMBER **22** OF **29**