

GENERAL NOTES:

- The Contractor Shall comply with all applicable safety regulations. All construction Shall be completed following current City Standard Specifications and Special Provisions.
- Contractor will be required to provide notice to utility companies a minimum of seventy-two (72) hours prior to any excavation, as follows:

Kansas One-Call 687-2470

The Contractor must notify the following in case of an emergency:

Cox Communications 262-4270
 Kansas Gas Service 1-888-482-4950
 Evergy 383-8650
 Aquila Energy 1-800-303-0357
 AT&T 268-2245
 City of Wichita Water Dept. 268-4563
 City of Wichita Sewer Maint. 268-4024
 City of Wichita Storm Sewer Maint. 268-4090
 City of Wichita Traffic Maint. 268-4034
 Conoco Phillips Pipeline Co. 1-877-267-2290
 Southern Star Pipeline Co. 529-6600
 Kinder-Morgan Pipeline Co. 1-888-844-5658

- Utility service lines, poles, valve boxes, meters, and etcetera are to be adjusted as necessary by others prior to construction unless the plans specifically call for their adjustment by the Contractor or unless the plans specifically identify a utility to be adjusted by its owner during construction. Existing utilities and their location, as shown on the plans, represent the best information obtainable for design. The Contractor will be required to work around existing utilities within the right-of-way which do not conflict with proposed construction.

- Rubble from the removal of miscellaneous structures and excess excavation which is to be wasted shall be disposed of on sites to be provided by the Contractor. These sites shall be approved by the Engineer as to suitability, appearance and site location. Locations, in the opinion of the Engineer, that will leave an unsightly appearance will not be approved. All disposal sites must be approved by the Kansas Department of Health and Environment. Material either stockpiled or disposed of in a flood plain would require a Kansas State Board of Agriculture permit. Any material dumped in waters of the United States or wetlands is subject to U.S. Corps. of Engineers permitting regulations. Any material buried or stockpiled beyond approved construction limits would require additional archaeological investigations unless buried in a previously approved borrow location.

5. Ten (10) Day Start Notice.

The Contractor Shall give all property owners and/or tenants of developed property abutting the construction of this project a minimum of ten (10) day notice prior to start of construction.

ABC Supply Co. Inc.: Frank Novascone - 316-706-2365

Advant Edge: Justin - 316-300-0835
 Jared - 316-633-3327

Ferguson Bath, Kitchen & Lighting Gallery:
 Holly Schneider - 316-361-3716
 Shelly Scheer

O'Hara & O'Hara Law Offices, LLC:
 Charles O'Hara - 316-258-7102

- The Contractor Shall be responsible for preserving Survey Monuments, which include Property Irons, Section Corners, and/or Benchmarks. The Contractor will be required to re-establish any Survey Monument damaged or destroyed by his construction operations, at his expense. Such monuments shall be re-established by a licensed land surveyor in accordance with state laws.

- All existing and proposed erosion control measures including silt fencing, erosion control mat, straw bales, inlet barriers, and const. entrance shall be maintained throughout construction by the contractor and until project is accepted by the City of Wichita. The on-site engineer shall complete weekly reports on the status of erosion control measures. The contractor shall be required to comply with maintenance and/or replacement of erosion control measures as determined by the on-site engineer until project is accepted by City of Wichita. Maintenance and/or replacement of erosion control measures to be paid by L.S. bid item "Maintain Existing BMP's."

- All excess excavation shall be removed from site.

- Maintain a minimum of 10-foot horizontal separation between all Water lines (Mains, Services and Fire Hydrants) and all Sanitary Sewer lines (Main, Services and Manholes) at crossings. All separation distances are to be measured from edge-to-edge, at the closest point.

- The Contractor Shall be responsible for maintaining continuous flow of sewage through construction. The Contractor's proposed method for maintaining sewage flow shall be submitted and approved by the Sewer Maintenance Division (316-268-4073) prior to starting and by-passing of sewage flows. All costs and/or control shall be considered SUBSIDIARY to Lump Sum Bid Item "Site Clearing". Contractor Shall notify two (2) affected Business's prior to construction.

- Maintain a minimum of 2-foot vertical separation between all Water lines (Main and Services) and all gravity Sanitary Sewer lines (Mains, Services and Manholes) at crossings. All separation distances are to be measured from edge-to-edge, at the closest point.

- The City of Wichita Engineering Division Shall field locate water valves one (1) time during construction when requested by the Contractor. It Shall be the Contractor's responsibility to preserve such field locations during the construction process. Water valves, valve boxes or fire hydrants damaged during construction Shall be repaired by Contractor at his own expense. Valve boxes and water meters within the project limits Shall be adjusted to match field grades by the Contractor.

- The Contractor Shall be responsible for all traffic control measures to facilitate construction activities. All construction zone markings and signage Shall conform to the latest version of the Manual on Uniform Traffic Control Devices (MUTCD), as published by the US Dept. of Transportation, Federal Highway Administration. The Contractor Shall submit comprehensive Traffic Control Plans and receive approval by the City Traffic Engineer, Mike Armour, at traffic@wichita.gov before construction can begin. All costs associated with construction drums, markings and signage Shall be considered SUBSIDIARY to the Lump Sum Bid Item "Traffic Control".

- All construction equipment, including vehicles, materials, and debris Shall be stored outside of the Clear Zone. Where this cannot be achieved the Contractor Shall place appropriate Signs, Object Identifiers, and/or Barricades in compliance with the MUTCD.

- The Contractor Shall not begin work on the project until the Project Inspector is assigned and on-site. Any work completed without inspection will be required to be uncovered for inspection, at the Contractor's expense.

- Full-depth saw cuts Shall be made in existing pavement requiring removal on straight and neat lines. Saw cuts will not be permitted within three (3) feet of an existing pavement joint line. Saw cuts Shall not be paid for directly, but shall be considered SUBSIDIARY to Bid Items for pavement removal.

- All areas disturbed during construction that will not be under proposed pavement Shall be restored to match existing conditions per City specifications.

- Adjacent buildings, structures, parking lots, driveways, etc. other than those shown for replacement Shall be protected from damage during construction of this project.

- All existing grassy areas disturbed during construction Shall be restored with Grass Sod, matching existing turf type. Restoration of disturbed areas Shall include, but not be limited to, Top Soil Preparation, Fertilizer and Sod Installation. All Turf Restoration / Sodding Work Shall be performed in accordance with latest revised City of Wichita - Standard Specifications - For the Construction of Public Projects, and City of Wichita Administration Regulation 6.5 or current version. The Contractor Shall be responsible for restoring all areas disturbed by construction activities, including those outside construction limits shown on the plans. When the weather / season prevents the installation of Sod, the Contractor Shall be responsible for installing an Approved Erosion Control Blanket at back of curb (8" minimum width). The Temporary Erosion Control Blanket (if installed) shall be removed before Grass Sod is placed. All costs associated with installation and removal of Temporary Erosion Control Blanket, Turf Restoration and Grass Sod installation work Shall be paid per Bid Item "Sodding".

- The Contractor Shall prevent any construction debris from entering the existing sanitary sewer system during construction. Contractor Shall leave Storm Water Sewer Manhole at Sanitary Sewer Line 1 Sta. 0+20 free from any trash or debris at end of construction.

- Contractor Shall perform sanitary sewer pipe air testing on all newly installed sewer pipe. Contractor Shall perform sanitary sewer manhole vacuum testing on all newly installed sewer manholes.

- Existing frames and lids from SS Manholes to be removed Shall be salvaged, cleaned and delivered to the City Maintenance Yard (715 W. Harry Street: 316-268-4025). This salvage work Shall be paid for with Lump Sum Bid Item "Site Clearing".

- Contractor Shall replace all existing pavement markings disturbed during construction activities. New Pavement Marking Material shall match Existing Pavement Marking Material Type. All costs associated with new Pavement Markings to be paid by Lump Sum Bid Item "Pavement Markings".

- If Existing Water Service Line(s) are in Conflict with proposed SS Line 1, Contractor Shall Lower Water Service Line(s) to meet General Note 11. This work Shall be paid for per EACH with Bid Item "Service Reconnection, Water".

- Based on the best information obtainable for design, none of the existing fourteen (14) Sanitary Sewer Service Taps (East) will need to be Reconnected to proposed Sanitary Sewer Line 1. Also, the existing Sanitary Sewer Service Line Pipes (East) will NOT need to be Plugged.

SANITARY SEWER IMPROVEMENTS to serve INDIANA AVE FROM DOUGLAS AVE TO 1st ST

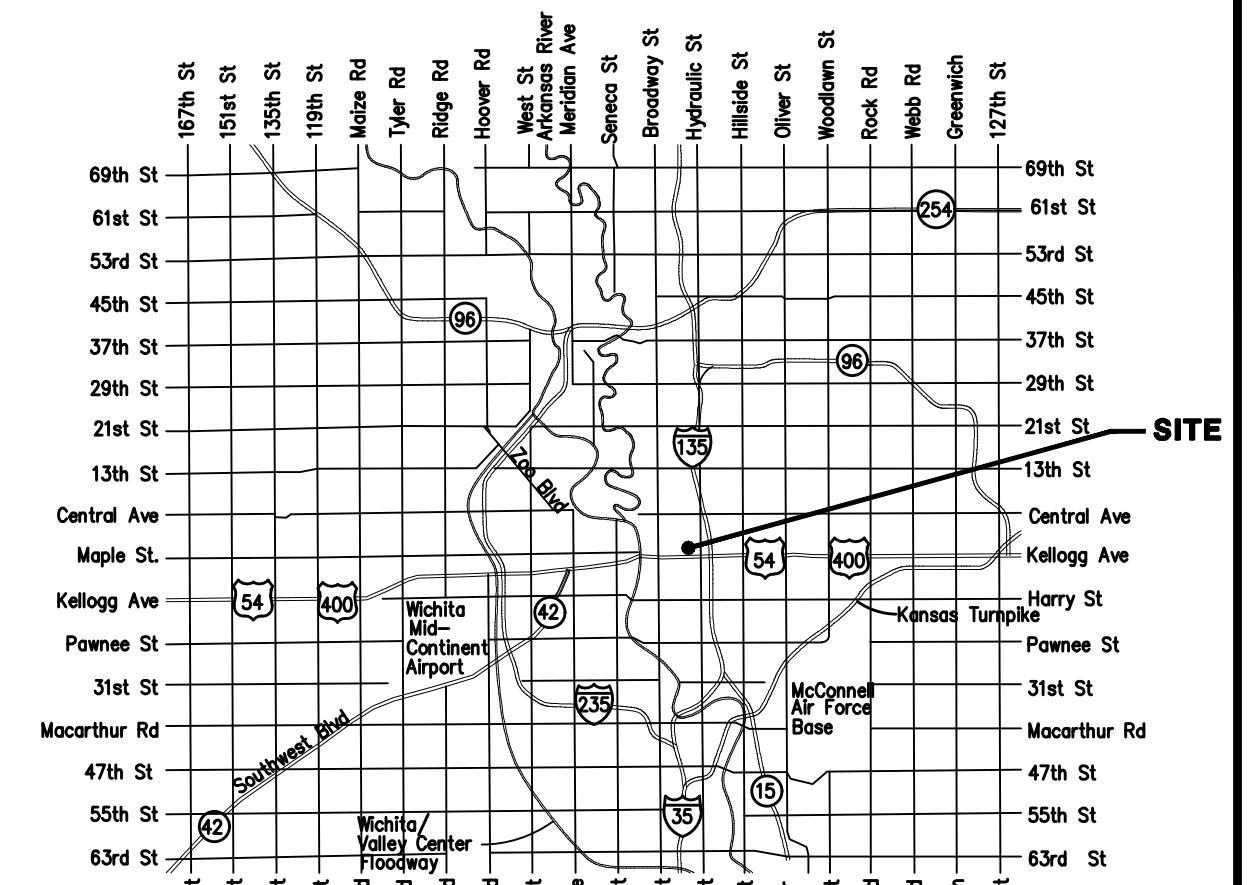
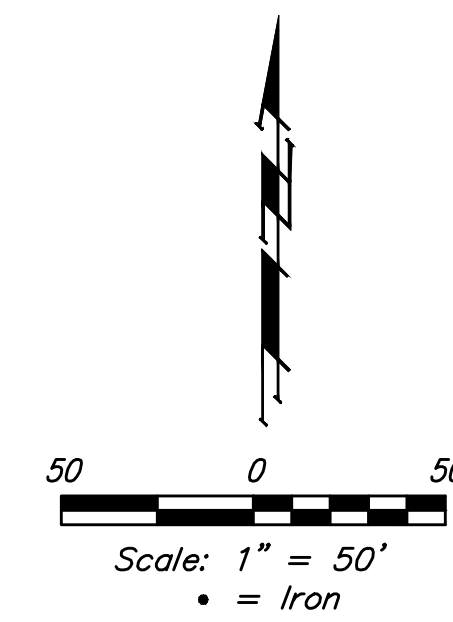
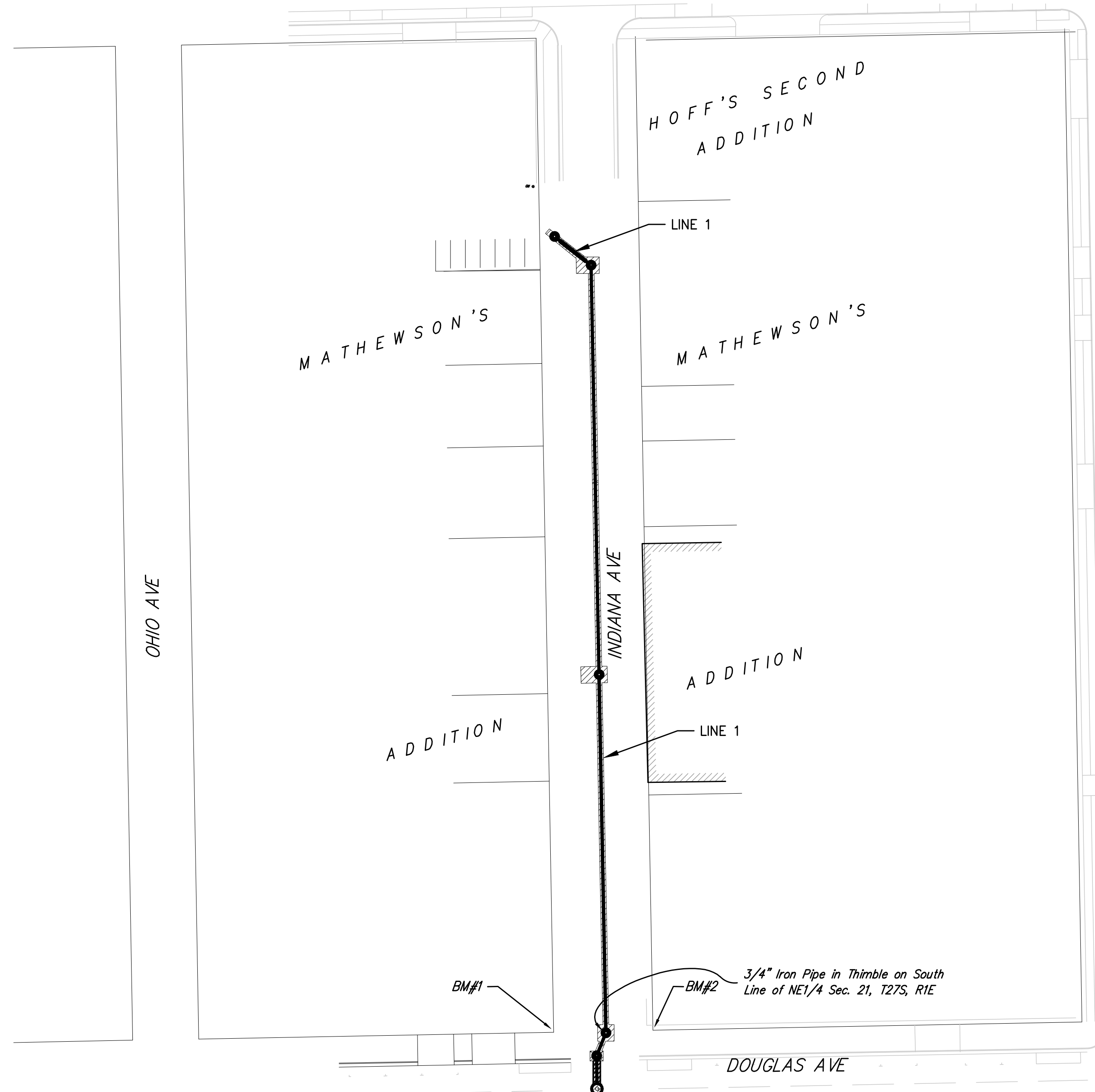
CITY OF WICHITA, KANSAS

Gary Janzen, P.E. City Engineer
 Project Number 468-2022-016654

Munis: S2004

ORG Code Number: 53200022

E. 1ST ST N.



VICINITY MAP

Sheet Index

Title Sheet	1
Precast SS Manhole Detail	2
Manhole Frame & Cover Detail	3
Line 1 Plan and Profile	4
Erosion Control Plan	5
Erosion Control BMP Details	6-10
Traffic Control Plan	11
Copy of Plat	12
Misc. Water Details	13

*Current Sanitary Sewer Control Details are available at City of Wichita web site at <http://www.wichita.gov/PWU/StandardsConstruction/Forms/WebPageStandardsConstruction.aspx>

Benchmarks

BM#1
 "x" Cut in Concrete,
 30'± W. of Thimble in Indiana St.
 NE1/4 Sec. 21, TWP 27-S, R-1-E.
 Elev. = 1295.16 NAVD88

BM#2
 "x" Cut in Concrete,
 30'± E. of Thimble in Indiana St.
 NE1/4 Sec. 21, TWP 27-S, R-1-E.
 Elev. = 1295.12 NAVD88



Rev: 01-06-23 Added Concrete Encasement & Details. January 6, 2023

BAUGHMAN COMPANY
 315 Ellis St. Wichita, KS 67211 316-262-7271
 BaughmanCo.com