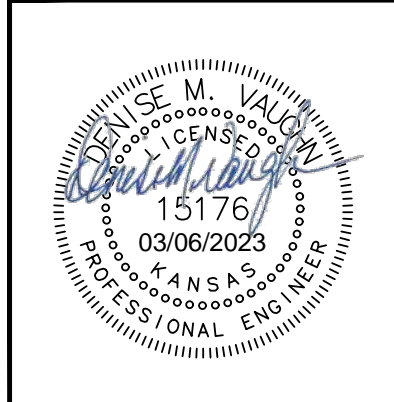
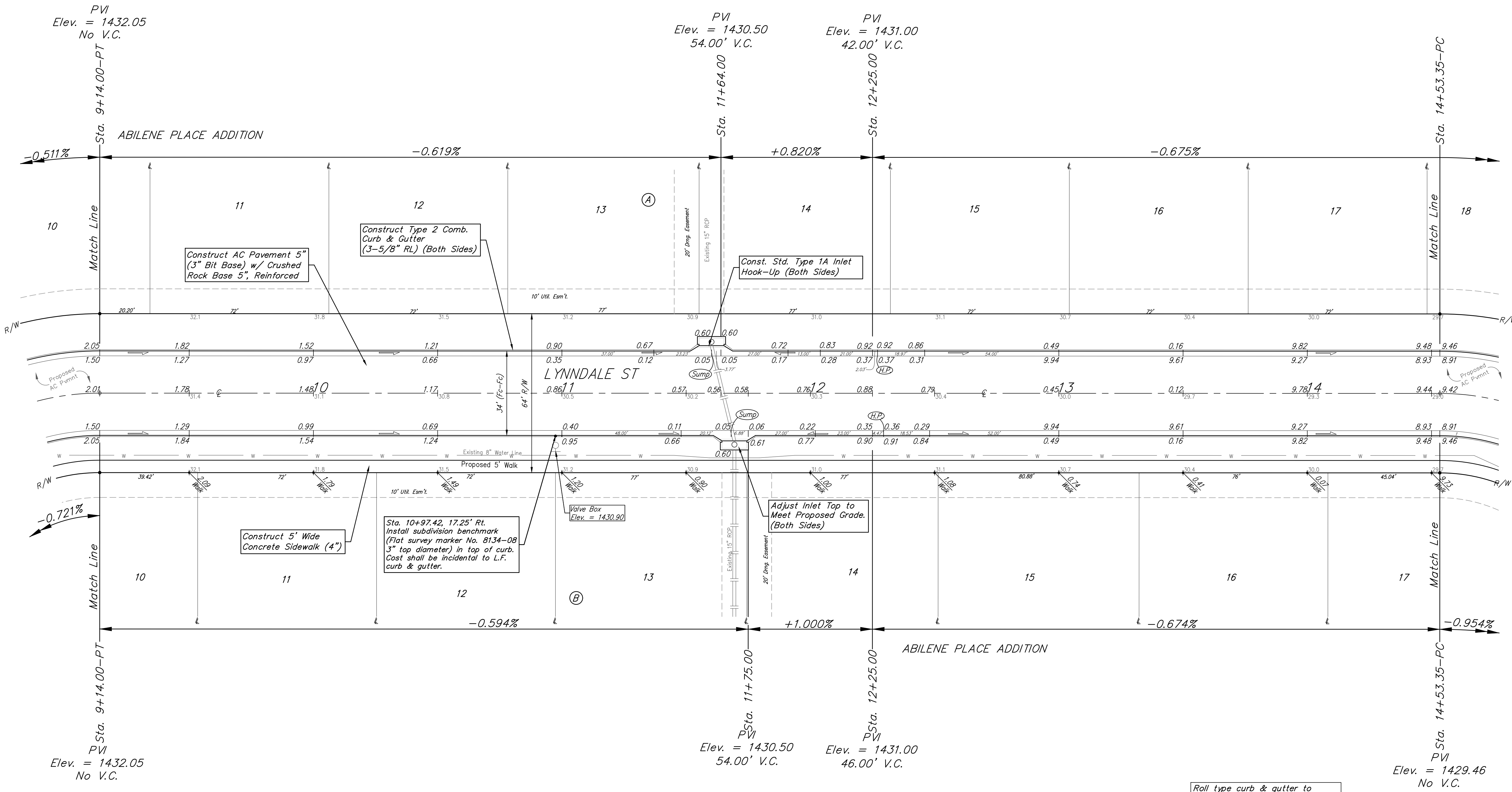
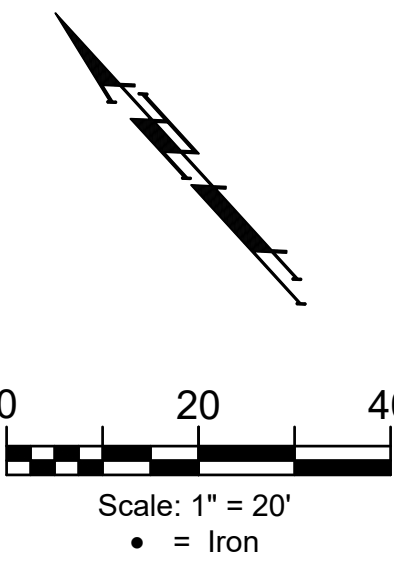


**BENCHMARK #1:**  
 Chiseled plus cut inside chiseled square, SE Cor. of catch basin on S. side of Apollo St., 32.5' W. to line of back of east curb of drive north, 11' E. to line of end of curb north, 103.2' ENE. of deflection cor., N. Line. Lot 9, Block A, Abilene Place Add. Elev. = 1432.98 NAVD88

**BENCHMARK #2:**  
 Chiseled plus cut inside chiseled square, top of curb, most southerly SW Cor. of parking lot, 17.6' S. to back of N. curb of Apollo St., 34.7' WSW to centerline of light pole base, 114.3' E. & 143.5' N. of NW Cor., Reserve "A", Abilene Place Add. Elev. = 1435.32 NAVD88



**BAUGHMAN COMPANY**  
 315 Ellis St.  
 Wichita, KS 67211  
 316-262-7271  
 BaughmanCo.com

ABILENE PLACE ADDITION PHASE I	
<b>LYNDDALE</b>	
Sta. 9+14.00 to Sta. 14+53.35 Street Paving Improvements	
PROJECT NUMBER:	472-2021-085724
DESIGN: DMV	DRAWN: JAK
DATE:	March 6, 2023
SHEET	OF
<b>10</b>	<b>25</b>

Roll type curb & gutter to be constructed on the pavement on this sheet.  
 Top of curb elevation are given for full height curb.

File: E:\Projects\Abilene Place Addition\_20-03-P540\Engineering\Phase 1\STR. 21-03-E877\STR. 21-03-E877.dwg