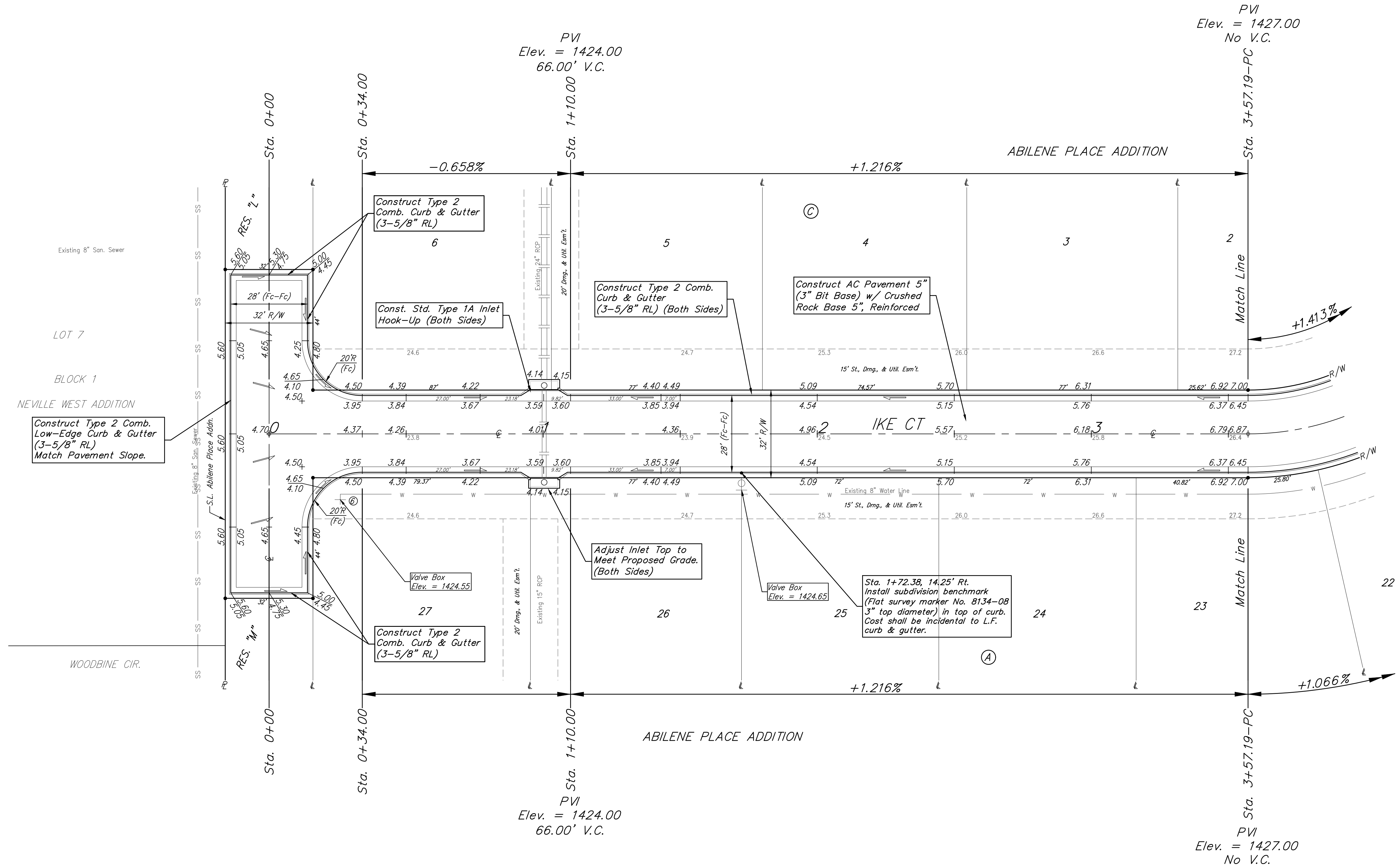
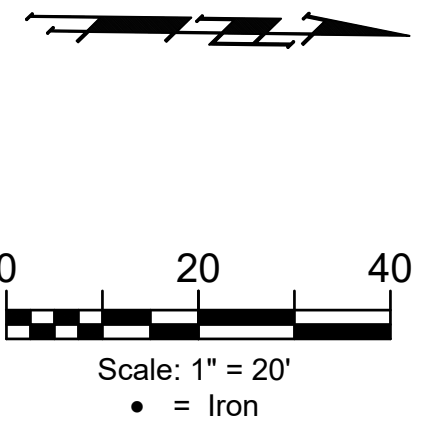


**BENCHMARK #1:**  
 Chiseled plus cut inside chiseled square, SE Cor. of catch basin on S. side of Apollo St., 32.5' W. to line of back of east curb of drive north, 11' E. to line of end of curb north, 103.2' ENE. of deflection cor., N. Line. Lot 9, Block A, Abilene Place Add. Elev. = 1432.98 NAVD88

**BENCHMARK #2:**  
 Chiseled plus cut inside chiseled square, top of curb, most southerly SW Cor. of parking lot, 17.6' S. to back of N. curb of Apollo St., 34.7' WSW to centerline of light pole base, 114.3' E. & 143.5' N. of NW Cor., Reserve "A", Abilene Place Add. Elev. = 1435.32 NAVD88



Construct Type 2 Comb. Low-Edge Curb & Gutter (3-5/8" RL) Match Pavement Slope.

Construct Type 2 Comb. Curb & Gutter (3-5/8" RL)

Const. Std. Type 1A Inlet Hook-Up (Both Sides)

Construct Type 2 Comb. Curb & Gutter (3-5/8" RL) (Both Sides)

Construct AC Pavement 5" (3" Bit Base) w/ Crushed Rock Base 5", Reinforced

Adjust Inlet Top to Meet Proposed Grade. (Both Sides)

Construct Type 2 Comb. Curb & Gutter (3-5/8" RL)

Sta. 1+72.38, 14.25' Rt. Install subdivision benchmark (Flat survey marker No. 8134-08 3" top diameter) in top of curb. Cost shall be incidental to L.F. curb & gutter.

Roll type curb & gutter to be constructed on the pavement on this sheet. Top of curb elevation are given for full height curb.



**BAUGHMAN COMPANY**  
 315 Ellis St.  
 Wichita, KS 67211  
 316-262-7271  
 BaughmanCo.com

ABILENE PLACE ADDITION PHASE I

**IKE CT**

Sta. 0+00 to Sta. 3+57.19 Street Paving Improvements

PROJECT NUMBER:  
472-2021-085724

DESIGN: DMV DRAWN: JAK  
DATE: March 6, 2023

SHEET OF  
**12 25**

File: E:\Projects\Abilene Place Addition\_20-03-P540\Engineering\Phase 1\STR\_21-03-EB77.dwg