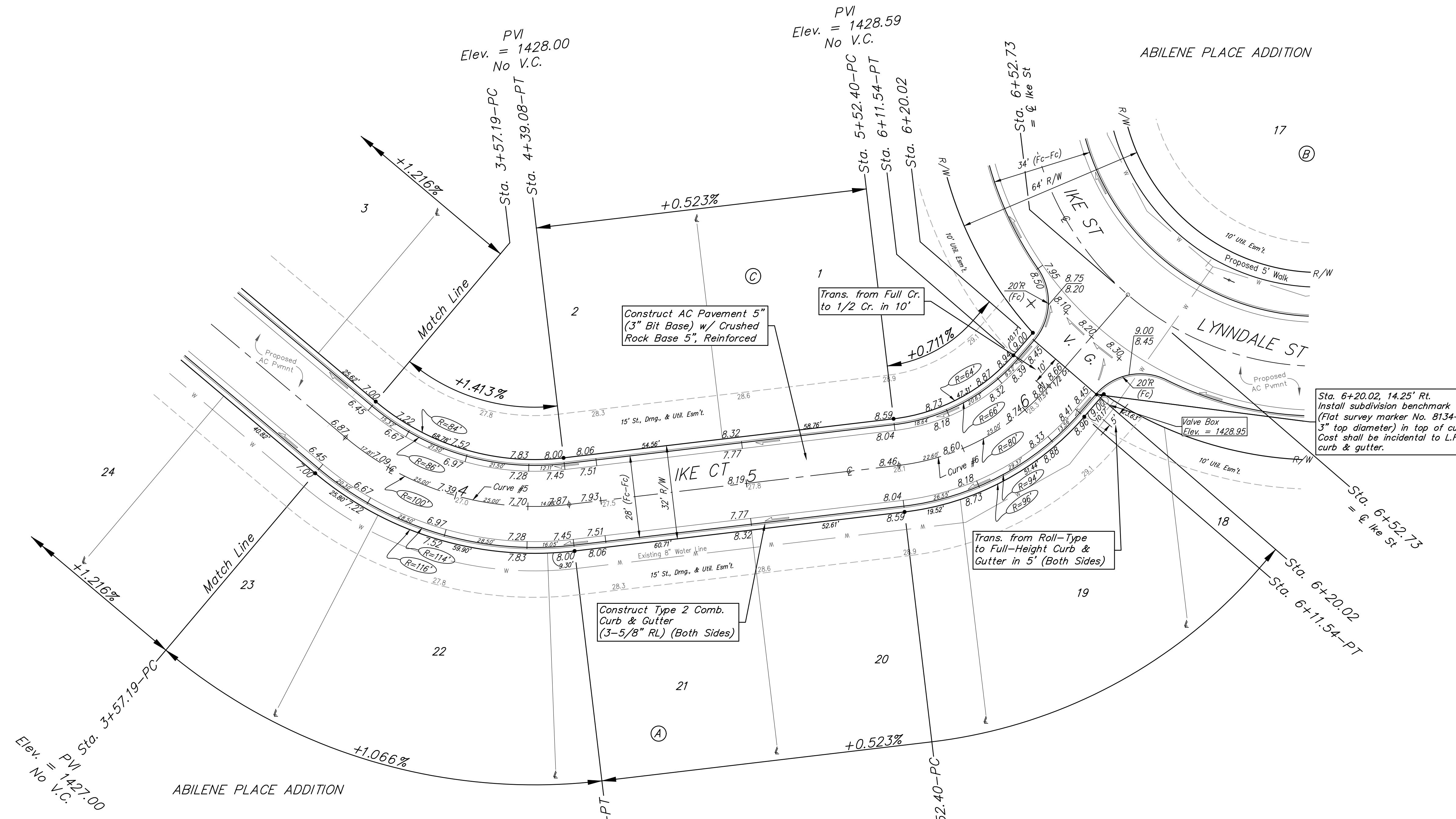
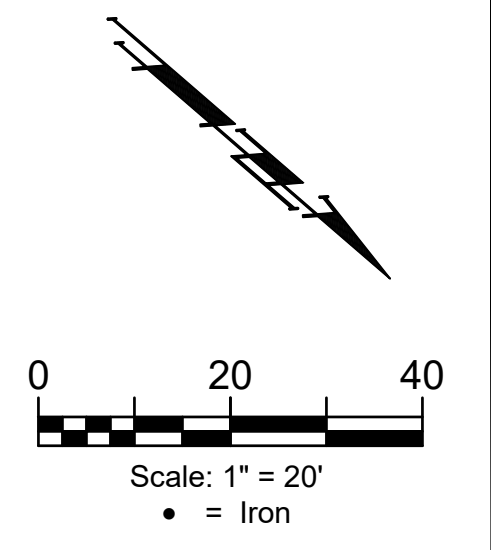


BENCHMARK #1:
Chiseled plus cut inside chiseled square, SE Cor. of catch basin on S. side of Apollo St., 32.5' W. to line of back of east curb of drive north, 11' E. to line of end of curb north, 103.2' ENE. of deflection cor., N. Line. Lot 9, Block A, Abilene Place Add. Elev. = 1432.98 NAVD88

BENCHMARK #2:
Chiseled plus cut inside chiseled square, top of curb, most southerly SW Cor. of parking lot, 17.6' S. to back of N. curb of Apollo St., 34.7' WSW to centerline of light pole base, 114.3' E. & 143.5' N. of NW Cor., Reserve "A", Abilene Place Add. Elev. = 1435.32 NAVD88



VALVE LOCATION TABLE

VALVE NUMBER	STREET	BASILINE STATION	OFFSET DISTANCE	OFFSET DIRECTION
1	Lynndale	0+47.00	25'	Rt.
2	Lynndale	7-46.38	23'	Rt.
3	Lynndale	15+15.86	22.5'	Rt.

VALVE LOCATION TABLE

VALVE NUMBER	STREET	BASILINE STATION	OFFSET DISTANCE	OFFSET DIRECTION
4	Lynndale	15+18.21	24.9'	Rt.
5	Ike	16+23.65	24.5'	Rt.
6	Ike Ct.	0+26.00	24'	Rt.

SUBDIVISION BENCHMARKS

Street & Station	Location Description	Elevation
Lynndale 2+81.77, 17.25' Rt.	Adjacent to Fire Hydrant at the NE Cor., Lot 3, Blk B, Abilene Place Addn.	
Lynndale 7+05.74, 17.25' Rt.	Adjacent to Fire Hydrant at the NE Cor., Lot 8, Blk B, Abilene Place Addn.	
Lynndale 10+97.42, 17.25' Rt.	Adjacent to Fire Hydrant at the NE Cor., Lot 13, Blk B, Abilene Place Addn.	
Ike Ct 1+72.38, 14.25' Rt.	Adjacent to Fire Hydrant at the NW Cor., Lot 26, Blk A, Abilene Place Addn.	
Ike Ct 6+20.02, 14.25' Rt.	Adjacent to Fire Hydrant at the East End of the North Return Ike & Ike Ct, SW Cor., Lot 19, Blk A, Abilene Place Addn.	

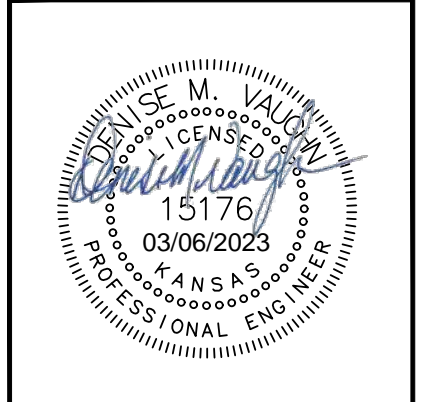
Curve #5
Curve Data Based on Centerline
Rad. = 100' Delta = 46°55'03" Tangent = 43.40'
Arc = 81.89' L.C. = 79.62' Def./Ft. = 17.18800 Min.

Station	Arc	Face Chord Lengths		Defl.	Total Defl.
		8' Left	8' Right		
3+57.19	-	-	-	0'00'00"	0'00'00"
3+75.00	17.81'	13.87'	21.70'	5'06'07"	5'06'07"
4+00.00	25.00'	19.45'	30.42'	7'09'42"	12'15'49"
4+25.00	25.00'	19.45'	30.42'	7'09'42"	19'25'31"
4+39.08	14.08'	10.97'	17.16'	4'02'01"	23'27'32"

Curve #6
Curve Data Based on Centerline
Rad. = 80' Delta = 42°21'06" Tangent = 30.99'
Arc = 59.14' L.C. = 57.80' Def./Ft. = 21.48377 Min.

Station	Arc	Face Chord Lengths		Defl.	Total Defl.
		8' Left	8' Right		
5+52.40	-	-	-	0'00'00"	0'00'00"
5+75.00	22.60'	16.33'	28.72'	8'05'32"	8'05'32"
6+00.00	25.00'	18.05'	31.74'	8'57'06"	17'02'38"
6+11.54	11.54'	8.36'	14.70'	4'07'55"	21'10'33"

Roll type curb & gutter to be constructed on the pavement on this sheet.
Top of curb elevation are given for full height curb.



BAUGHMAN COMPANY
315 Ellis St.
Wichita, KS 67211
316-262-7271
BaughmanCo.com

ABILENE PLACE ADDITION
PHASE I

IKE CT

Sta. 3+57.19 to Sta. 6+20.02
Street Paving Improvements

PROJECT NUMBER:
472-2021-085724

DESIGN: DMV DRAWN: JAK
DATE: March 6, 2023

SHEET OF
13 25

File: E:\Projects\Abilene Place Addition_20-03-P540\Engineering\Phase 1\STR_21-03-EB77\STR_21-03-EB77.dwg