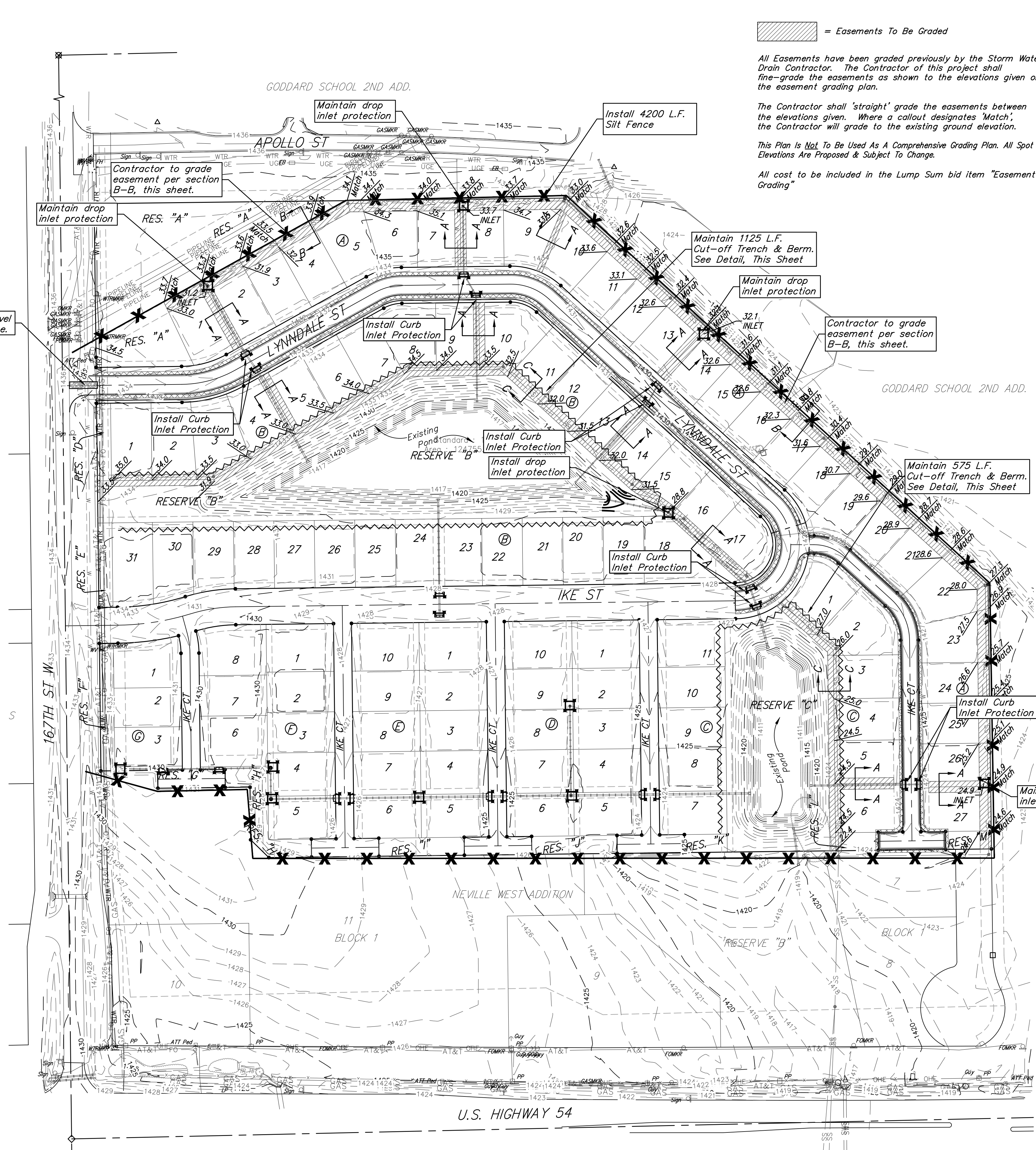


BENCHMARK #1:
Chiseled plus cut inside chiseled square, SE Cor. of catch basin on S. side of Apollo St., 32.5' W. to line of back of east curb of drive north, 11' E. to line of end of curb north, 103.2' ENE. of deflection cor., N. Line. Lot 9, Block A, Abilene Place Add. Elev. = 1432.98 NAVD88

BENCHMARK #2:
Chiseled plus cut inside chiseled square, top of curb, most southerly SW Cor. of parking lot, 17.6' S. to back of N. curb of Apollo St., 34.7' WSW to centerline of light pole base, 114.3' E. & 143.5' N. of NW. Cor., Reserve "A", Abilene Place Add. Elev. = 1435.32 NAVD88



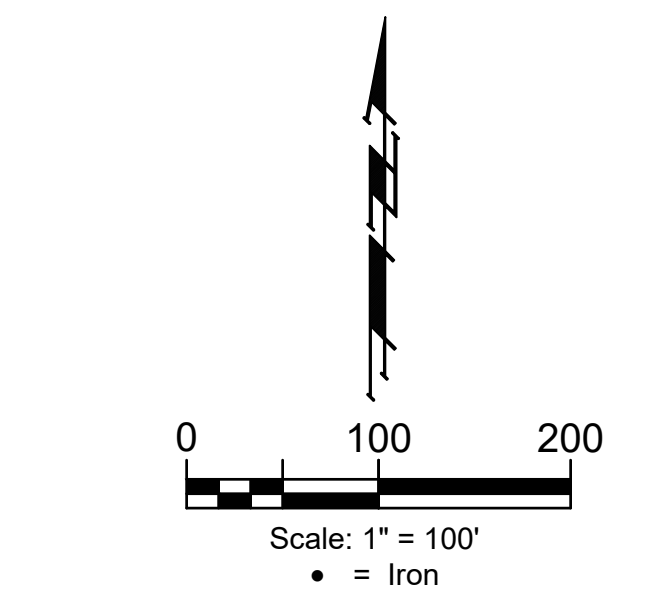
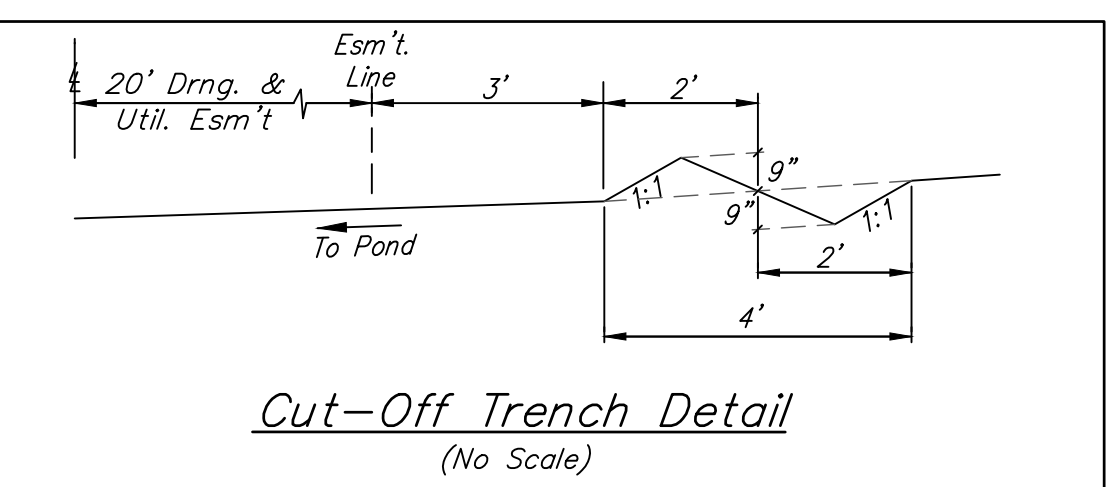
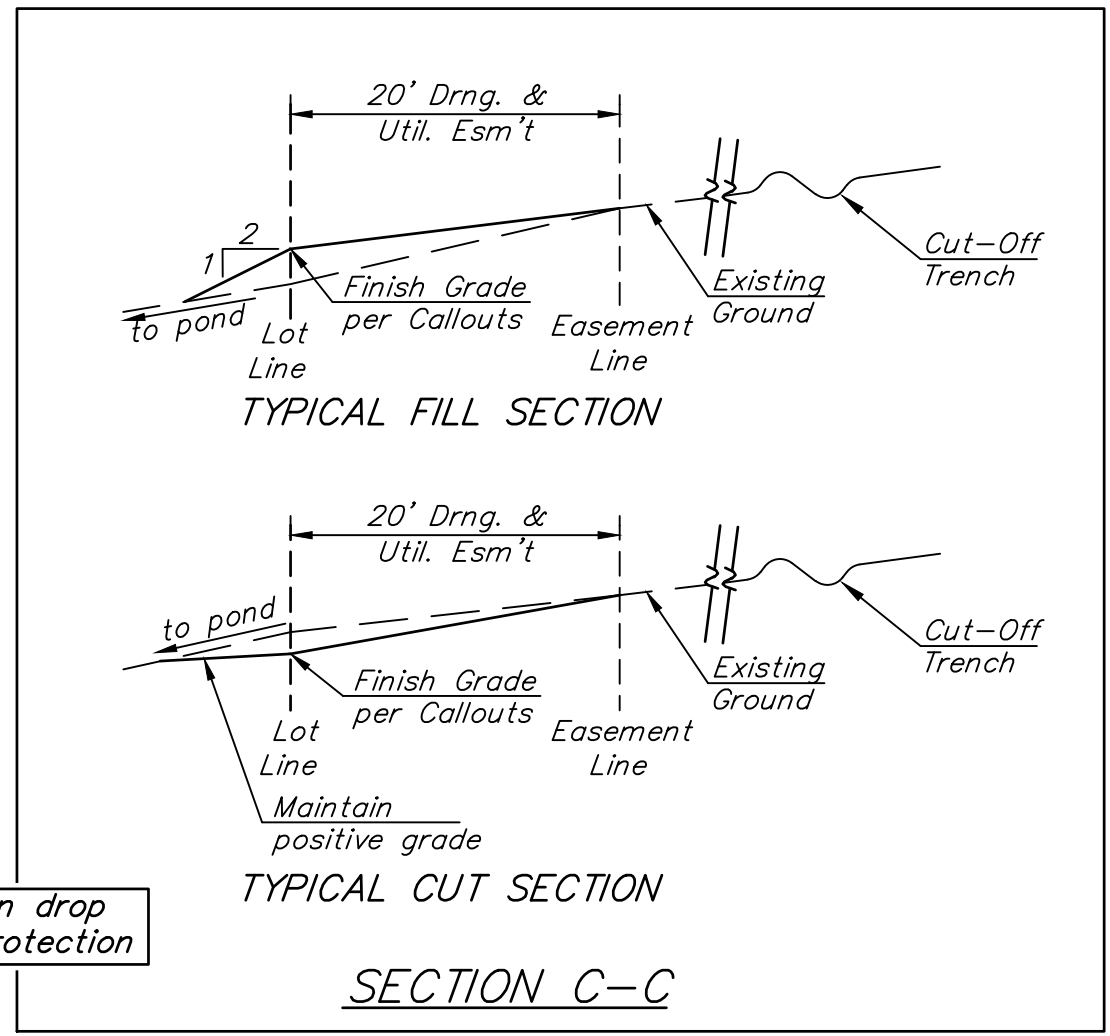
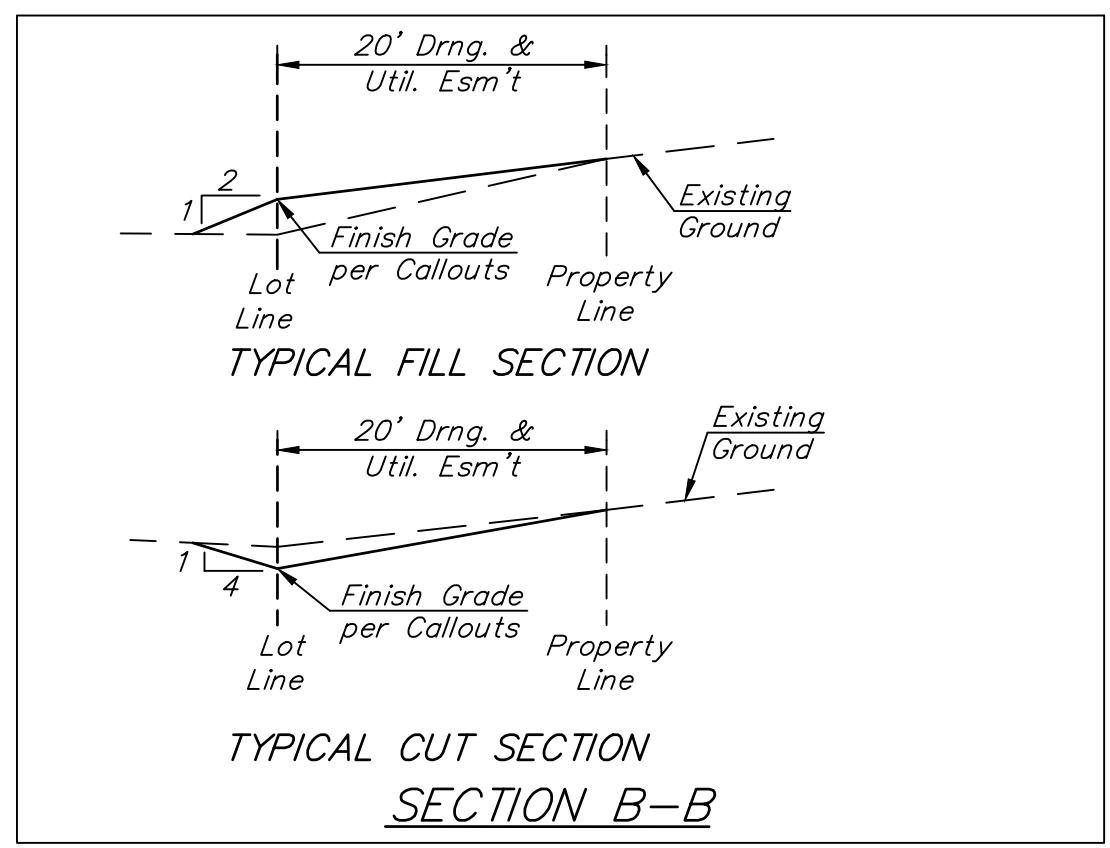
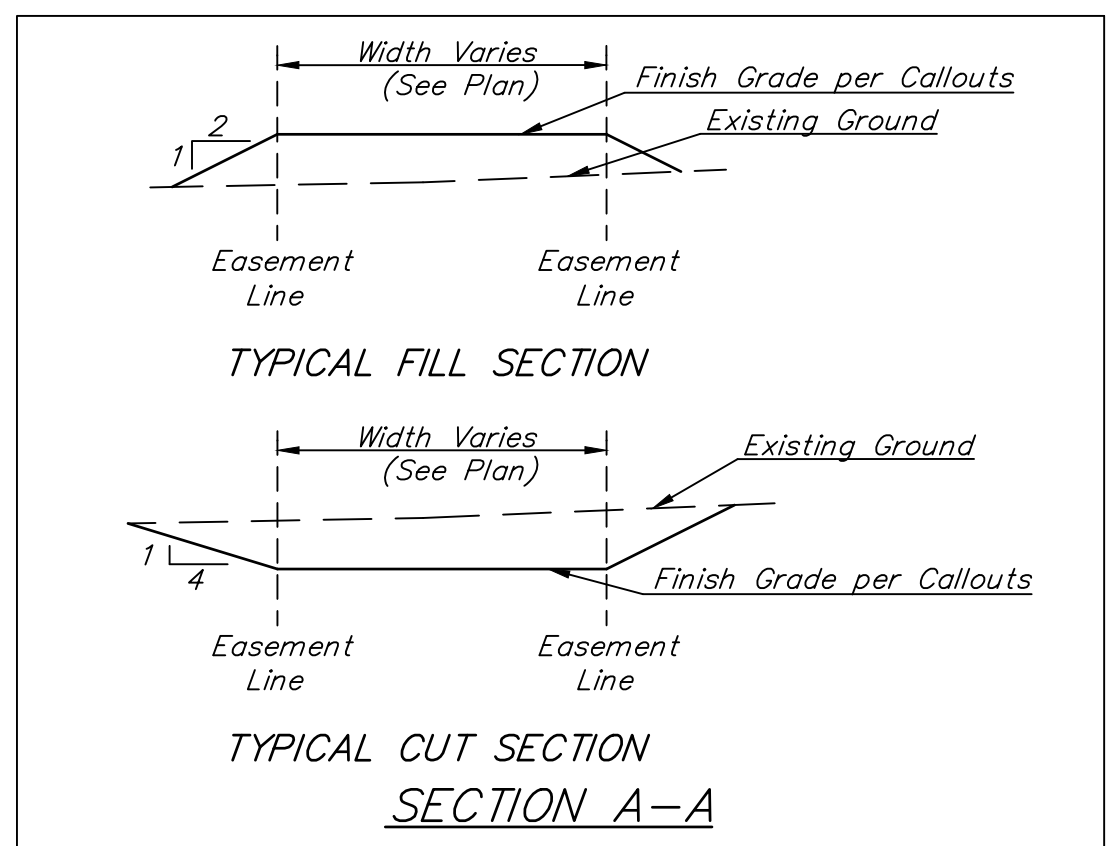
= Easements To Be Graded

All Easements have been graded previously by the Storm Water Drain Contractor. The Contractor of this project shall fine-grade the easements as shown to the elevations given on the easement grading plan.

The Contractor shall 'straight' grade the easements between the elevations given. Where a callout designates 'Match', the Contractor will grade to the existing ground elevation.

This Plan Is Not To Be Used As A Comprehensive Grading Plan. All Spot Elevations Are Proposed & Subject To Change.

All cost to be included in the Lump Sum bid item "Easement Grading"



EROSION CONTROL LEGEND

- DROP INLET PROTECTION
- CURB INLET PROTECTION
- CUT-OFF TRENCH
- BACK OF CURB PROTECTION
- SILT FENCING

- NOTES:**
- Contractor shall make sure all erosion control is in place before project is accepted. This plan represents the minimum standard. Any additional erosion control measures shall be installed by the Contractor as needed.
 - Removal of Gravel Construction Entrance for pavement construction shall be included in bid item "Site Restoration"
 - All areas disturbed during construction shall be seeded, mulched, and fertilized as per Cover Sheet General Notes.

EROSION CONTROL MEASURE	INSTALL	MAINTAIN
BACK OF CURB PROTECTION (LF)	4,714	0
CONSTRUCTION ENTRANCE (EA)	0	1
CURB INLET BARRIER (EA)	10	0
DROP INLET PROTECTION (EA)	0	5
SILT FENCE PROTECTION (LF)	4,200	0
MAINTAIN EROSION CONTROL BMP's (LS)	0	1

* ALL EXISTING BMPs INCLUDING CONSTRUCTION ENTRANCE, SEDIMENT BARRIERS, SILT FENCE, CUT-OFF TRENCH, AND EROSION CONTROL MAT SHALL BE MAINTAINED AND REPAIRED IF NECESSARY.



BAUGHMAN COMPANY
315 Ellis St.
Wichita, KS 67211
316-262-7271
BaughmanCo.com

ABILENE PLACE ADDITION
PHASE I

EROSION CONTROL

Sta. 0+59.06 to Sta. 3+34.42
Street Paving Improvements
PROJECT NUMBER:
472-2021-085724
DESIGN: DMV DRAWN: JAK
DATE: March 6, 2023
SHEET OF
14 25

File: E:\Projects\Abilene Place Addition_20-03-P540\Engineering\Phase 1\STR_21-03-EB77\STR_21-03-EB77.dwg