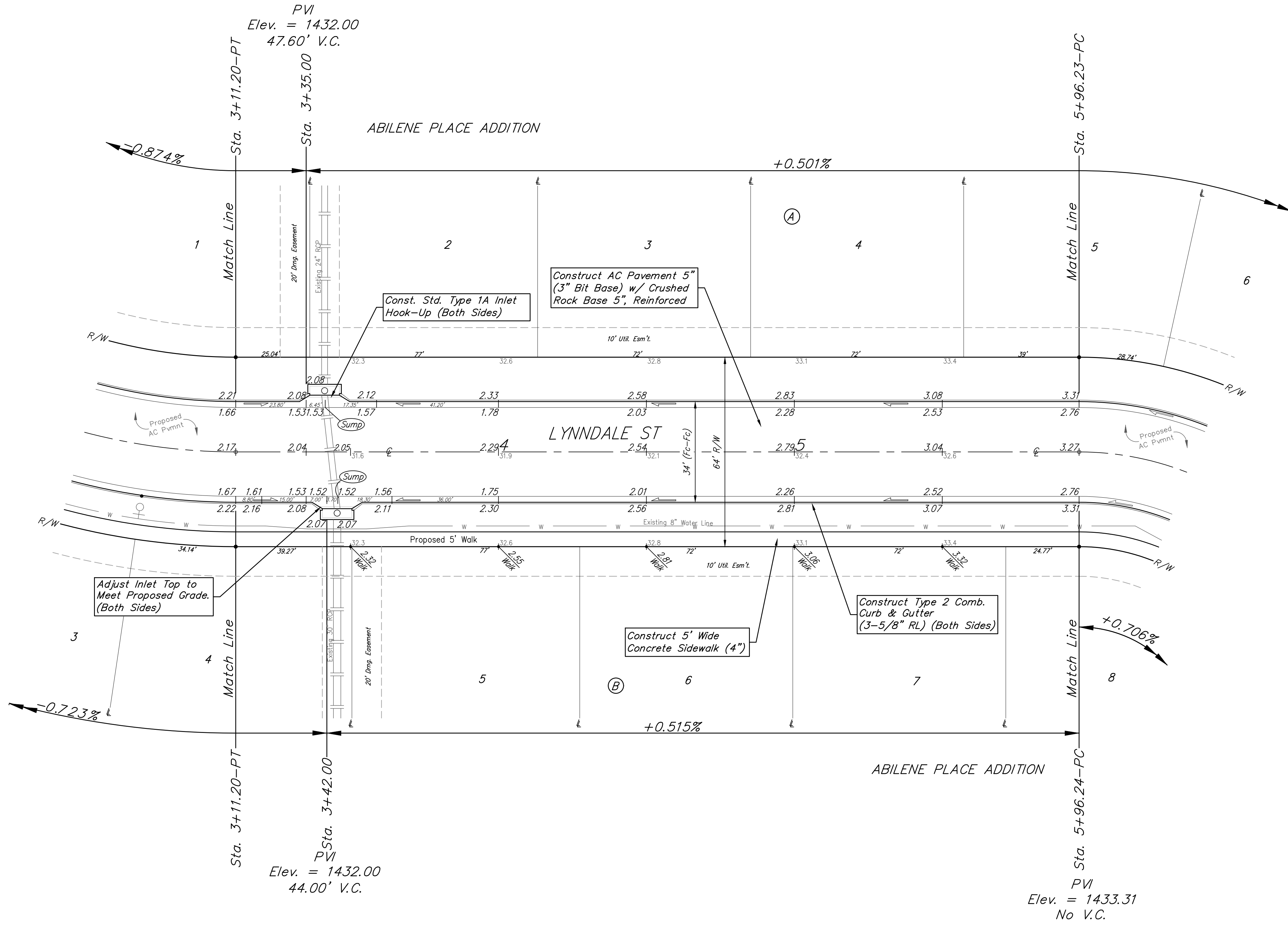
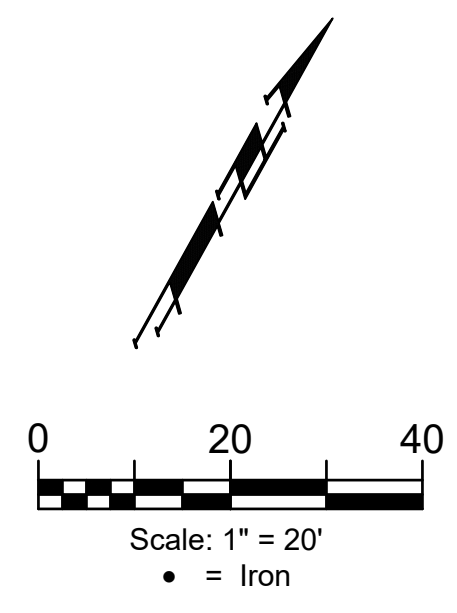


BENCHMARK #1:
 Chiseled plus cut inside chiseled square, SE Cor. of catch basin on S. side of Apollo St., 32.5' W. to line of back of east curb of drive north, 11' E. to line of end of curb north, 103.2' ENE. of deflection cor., N. Line. Lot 9, Block A, Abilene Place Add. Elev. = 1432.98 NAVD88

BENCHMARK #2:
 Chiseled plus cut inside chiseled square, top of curb, most southerly SW Cor. of parking lot, 17.6' S. to back of N. curb of Apollo St., 34.7' WSW to centerline of light pole base, 114.3' E. & 143.5' N. of NW Cor., Reserve "A", Abilene Place Add. Elev. = 1435.32 NAVD88



Adjust Inlet Top to Meet Proposed Grade. (Both Sides)

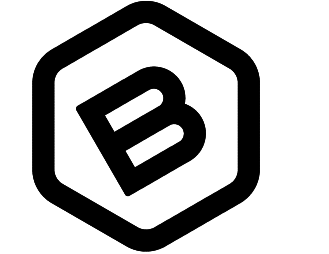
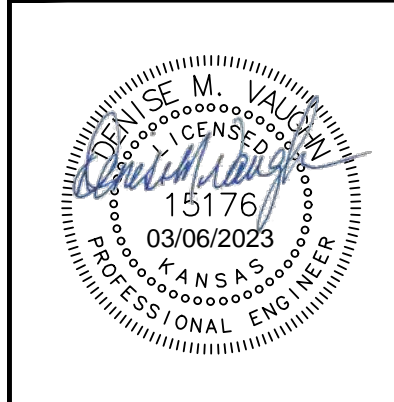
Const. Std. Type 1A Inlet Hook-Up (Both Sides)

Construct AC Pavement 5" (3" Bit Base) w/ Crushed Rock Base 5", Reinforced

Construct 5' Wide Concrete Sidewalk (4")

Construct Type 2 Comb. Curb & Gutter (3-5/8" RL) (Both Sides)

Roll type curb & gutter to be constructed on the pavement on this sheet. Top of curb elevation are given for full height curb.



BAUGHMAN COMPANY
 315 Ellis St.
 Wichita, KS 67211
 316-262-7271
 BaughmanCo.com

ABILENE PLACE ADDITION PHASE I

LYNNDALE

Sta. 3+11.20 to Sta. 5+96.23
 Street Paving Improvements

PROJECT NUMBER:
 472-2021-085724

DESIGN: DMV DRAWN: JAK
 DATE: March 6, 2023

SHEET **8** OF **25**

File: E:\Projects\Abilene Place Addition_20-03-P540\Engineering\Phase 1\STR_21-03-EB77.dwg