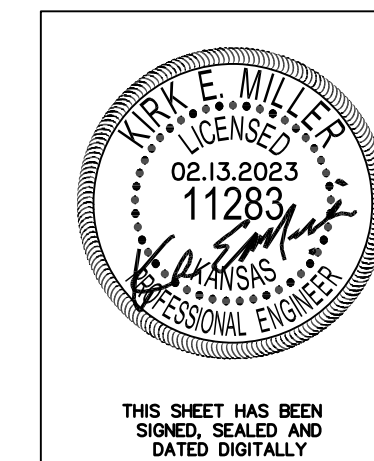


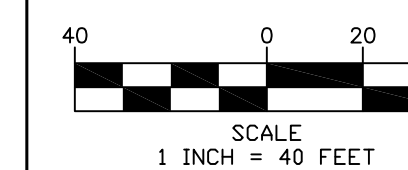
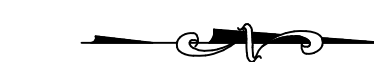


Control Points			
Point #	Northing	Easting	Raw Description
101	1689104.71	1605933.75	3/4" Iron
102	1689117.31	1606271.18	1/2" Rebar
103	1688083.13	1606276.58	Property Corner
104	1688015.12	1606276.94	1" Iron
105	1688014.37	1606263.52	1/2" Iron
106	1688042.28	1606200.96	Property Corner
107	1688021.23	1605940.03	Property Corner
108	1688039.52	1605939.93	1/2" Iron
109	1688439.54	1605937.64	3/4" Iron - PEC
110	1688497.44	1605937.30	3/4" Iron - PEC

WL Control Points							
Point #	Northing	Easting	Raw Description	Point #	Northing	Easting	Raw Description
201	1688491.44	1605936.08	0+00.00 WL1	210	1688281.74	1606065.57	5+83.58 WL1
202	1688492.55	1606129.00	1+92.91 WL1	211	1688895.46	1606126.66	4+02.91 WL2
203	1688430.37	1606129.36	2+55.10 WL1	212	1688906.39	1606137.47	4+18.28 WL2
204	1688300.77	1606130.11	3+84.70 WL1	213	1688914.21	1606145.20	4+29.28 WL2
205	1688282.22	1606148.87	4+11.08 WL1	214	1688948.72	1606145.00	4+63.78 WL2
206	1688247.72	1606149.07	4+45.58 WL1	215	1688972.97	1606120.46	4+98.28 WL2
207	1688223.18	1606124.81	4+80.08 WL1	216	1688972.77	1606085.96	5+32.78 WL2
208	1688222.98	1606090.31	5+14.58 WL1	217	1688948.24	1606061.70	5+67.28 WL2
209	1688247.24	1606065.77	5+49.08 WL1	218	1688913.74	1606061.90	6+01.78 WL2



THIS SHEET HAS BEEN
SIGNED, SEALED AND
DATED DIGITALLY



REVISED
-

Cedar Dale Addition
Control Map
Wichita, Kansas



117 E. Lewis, Wichita, KS 67202 (316)264-0242

KEM PROJ. 20130	DATE 02.2023	SHEET 2.0
DESIGN KEM	DRAWN ZJS	