

Sta 0+00.00 WL1  
 Remove Ex Blowoff Ass'y &  
 Connect to Ex 8" WL  
 \*Contractor to Verify Depth  
 & Location of Existing WL  
 Prior to Construction  
 Install 8" Gate Valve Ass'y  
 Valve Box Elev = 1343.45  
 N=1688491.44 E=1605936.08

!!CAUTION!! Prop.  
 12" RCP Crossing

Sta 0+17.53 WL1  
 Install 8" CIMJ 45° Bend (V)  
 N=1688491.54 E=1605953.61

Sta 0+19.13 WL1  
 Install 8" CIMJ 45° Bend (V)  
 N=1688491.55 E=1605955.21

Sta 1+92.91 WL1 =  
 Sta 0+00.00 WL2  
 Install 8" x 8" MJ Tee  
 2-8" Gate Valve Ass'y (N&S)  
 Valve Box Elev = 1345.13  
 N=1688492.55 E=1606129.00  
 MATCH POINT-Sh 3.1 & 4.0

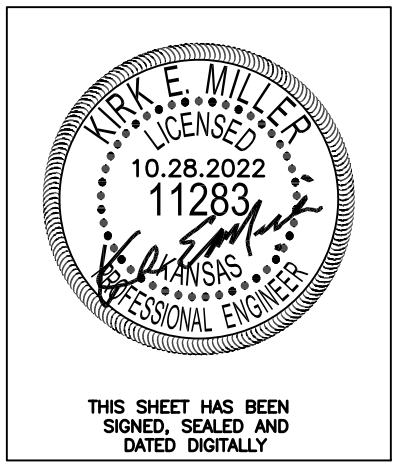
!!CAUTION!! Exist.  
 UGT, UGE, UGTV,  
 & BHE Gas Line  
 in Close Proximity  
 to Sta. 0+00.00

Install 1.60  
 LF of 8" DICL

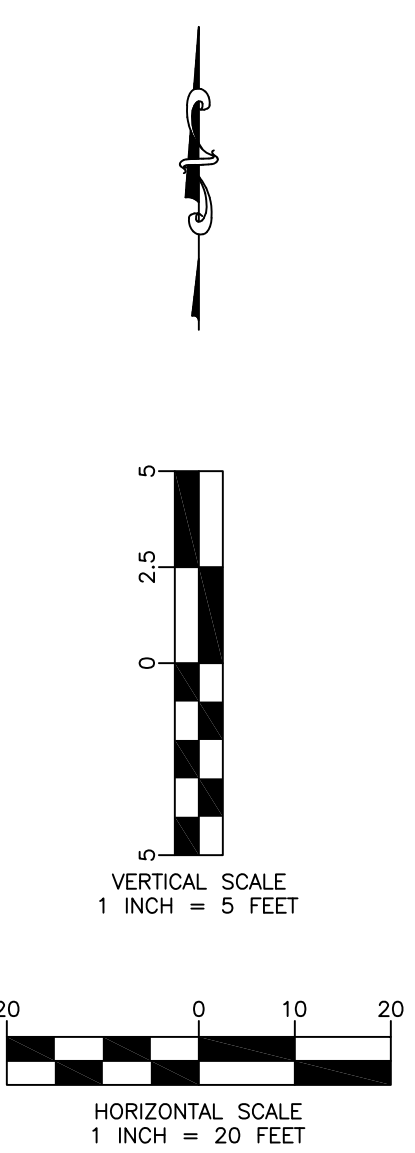
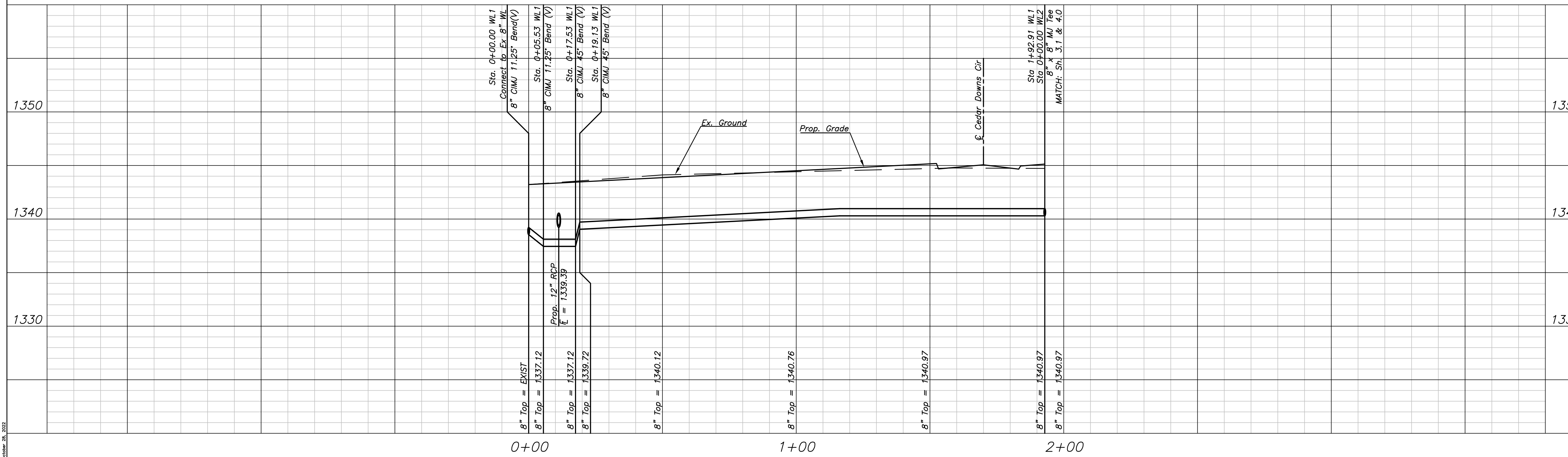
Install 173.78  
 LF of 8" PVC

Install 12.00  
 LF of 8" PVC

Install 5.53  
 LF of 8" DICL



LINE 1



Cedar Dale Addition  
 WL1 Plan & Profile  
 Wichita, Kansas

**KEMILLER**  
 ENGINEERS  
 117 E. Lewis, Wichita, KS 67202 (316)264-0242

KEM PROJ. 20130	DATE 11.2022	SHEET 3.0
DESIGN KEM	DRAWN ZJS	

October 28, 2022