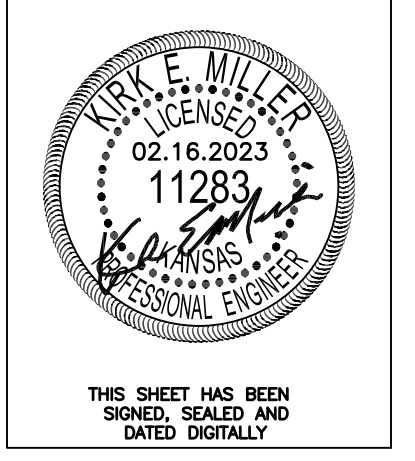


0+00 N Esmt =  
10+23.85 E Esmt  
N=1688083.09  
E=1606266.58

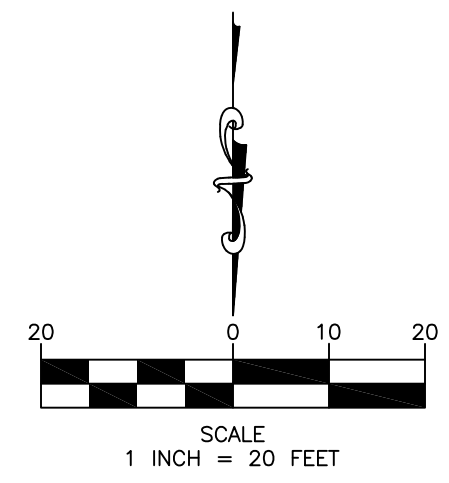
Contractor to Ensure  
Positive Drainage to  
Ex. Beehive Inlet

317.56 LF of 20'  
Easement Grading

3+17.56 N Esmt=  
10+05.99 W Esmt  
N=1689095.09  
E=1605943.90



THIS SHEET HAS BEEN  
SIGNED, SEALED, AND  
DATED DIGITALLY



REVISED  
—  
Cedar Dale Addition  
North Easement  
Grading Plan  
Wichita, Kansas



KEM PROJ. 20130	DATE 02.2023	SHEET 8.2
DESIGN KEM	DRAWN ZJS	