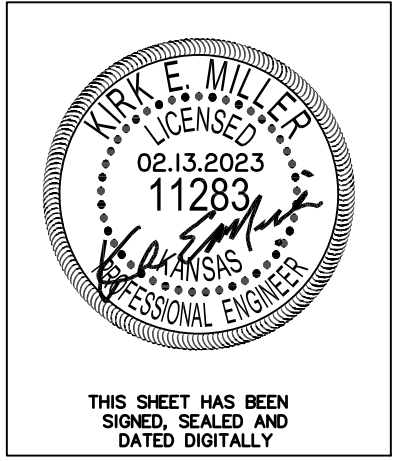


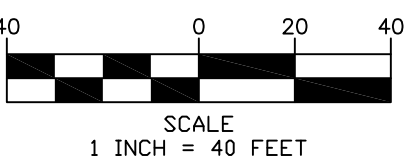


Control Points			
Point #	Northing	Easting	Raw Description
101	1689104.71	1605933.75	3/4" Iron
102	1689117.31	1606271.18	1/2" Rebar
103	1688083.13	1606276.58	Property Corner
104	1688015.12	1606276.94	1" Iron
105	1688014.37	1606263.52	1/2" Iron
106	1688042.28	1606200.96	Property Corner
107	1688021.23	1605940.03	Property Corner
108	1688039.52	1605939.93	1/2" Iron
109	1688439.54	1605937.64	3/4" Iron - PEC
110	1688497.44	1605937.30	3/4" Iron - PEC

SWS & Paving Points			
Point #	Northing	Easting	Raw Description
301	1688468.51	1605932.27	BL 0+00
302	1688469.52	1606106.13	BL 01+73.86
303	1688264.73	1606107.32	BL 10+00
304	1688931.22	1606103.45	BL 16+66.50
305	1688065.46	1606103.47	0+00 SWS A
306	1688228.36	1606102.72	1+61.41 SWS A
307	1689132.92	1606286.35	0+00 SWS B
308	1689059.25	1606286.90	0+73.68 SWS B
309	1688956.06	1606130.42	2+59.63 SWS B



THIS SHEET HAS BEEN
SIGNED, SEALED AND
DATED DIGITALLY



REVISED
-

Cedar Dale Addition
Control Map
Wichita, Kansas



KEM PROJ. 20130	DATE 02.2023	SHEET 2.0
DESIGN KEM	DRAWN ZJS	