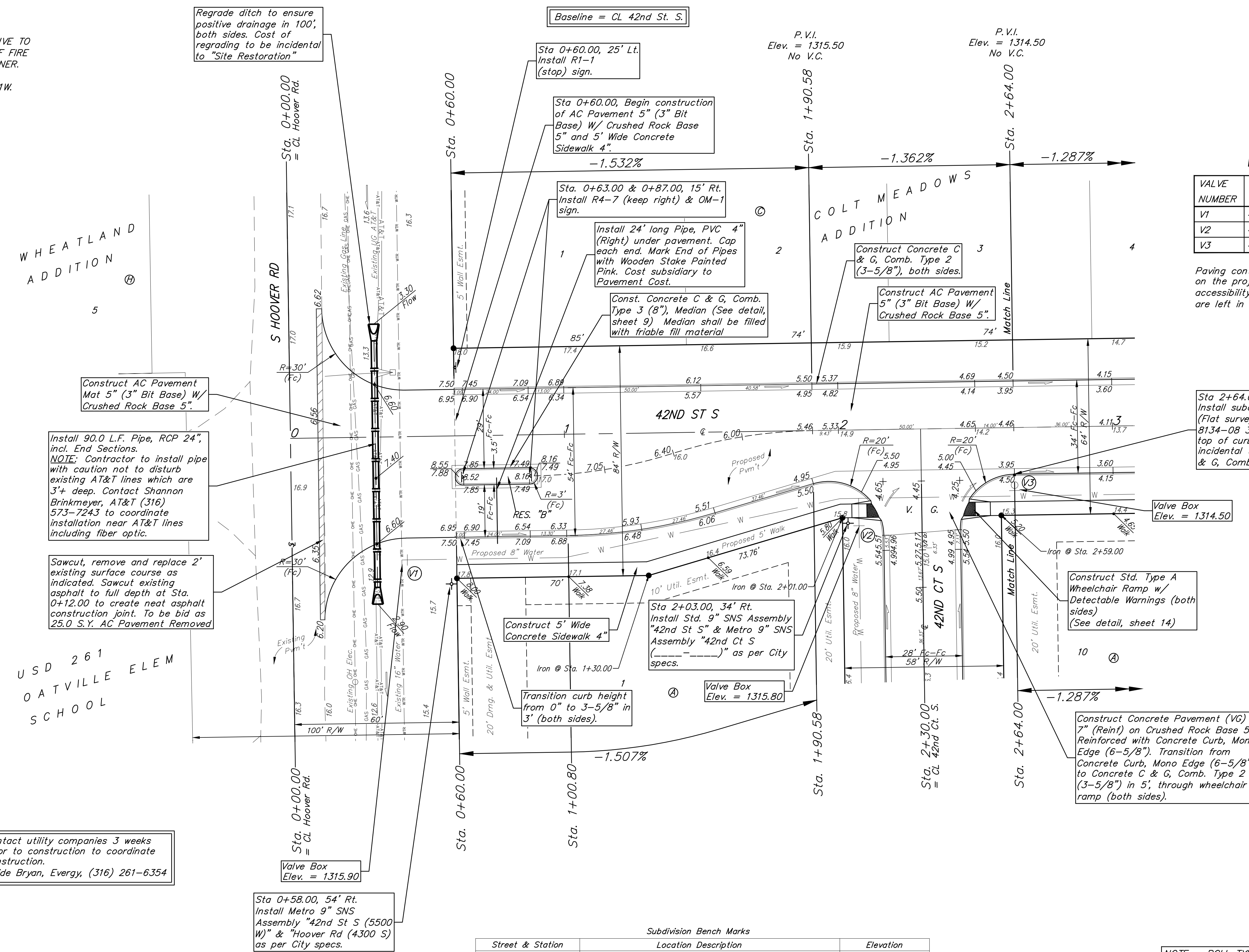
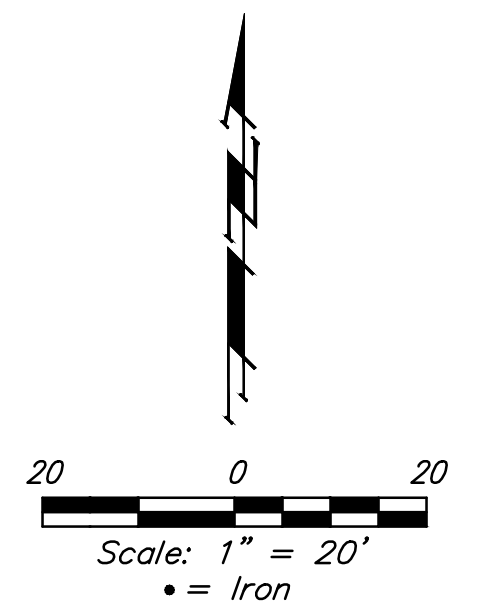


BENCHMARKS:
 BM #1: TOP OF 1 1/2" ALUMINUM MKEC DISC SOUTH SIDE OF FIELD ENTRANCE. 35' WEST OF HOOVER ROAD. 17' NNE OF POWER POLE. 28' SOUTH AND 35' WEST OF NE CORNER, SE1/4, SEC. 15, T28S, R1W. ELEV. = 1313.55 NAVD88

BM #2: CROSS CUT TOP OF CURB NORTH SIDE OF NORTH CIRCLE DRIVE TO OATVILLE ELEMENTARY. 3' WEST OF FIRE HYDRANT. 7' EAST OF FENCE CORNER. 373' NORTH AND 48' WEST OF NE CORNER, SE1/4, SEC. 15, T28S, R1W. ELEV. = 1315.78 NAVD88



WATER VALVE LOCATION TABLE

VALVE NUMBER	STREET	BASELINE STATION	OFFSET DISTANCE	OFFSET DIRECTION
V1	42nd St. S.	0+40.00	45'	Rt.
V2	42nd St. S.	2+07.00	35'	Rt.
V3	42nd St. S.	2+64.00	25'	Rt.

Paving contractor will be responsible to operate all water valves on the project, in the presence of the inspector, to ensure accessibility to the valves, and that all valves (except blowoffs) are left in the "ON" position when the project is completed.

Construct AC Pavement Mat 5" (3" Bit Base) W/ Crushed Rock Base 5".

Install 90.0 L.F. Pipe, RCP 24", incl. End Sections. **NOTE:** Contractor to install pipe with caution not to disturb existing AT&T lines which are 3'+ deep. Contact Shannon Brinkmeyer, AT&T (316) 573-7243 to coordinate installation near AT&T lines including fiber optic.

Sawcut, remove and replace 2' existing surface course as indicated. Sawcut existing asphalt to full depth at Sta. 0+12.00 to create neat asphalt construction joint. To be bid as 25.0 S.Y. AC Pavement Removed

Contact utility companies 3 weeks prior to construction to coordinate construction. Heide Bryan, Evergy, (316) 261-6354

Regrade ditch to ensure positive drainage in 100' both sides. Cost of regrading to be incidental to "Site Restoration"

Baseline = CL 42nd St. S.

Sta 0+60.00, 25' Lt. Install R1-1 (stop) sign.

Sta 0+60.00, Begin construction of AC Pavement 5" (3" Bit Base) W/ Crushed Rock Base 5" and 5' Wide Concrete Sidewalk 4".

Sta. 0+63.00 & 0+87.00, 15' Rt. Install R4-7 (keep right) & OM-1 sign.

Install 24' long Pipe, PVC 4" (Right) under pavement. Cap each end. Mark End of Pipes with Wooden Stake Painted Pink. Cost subsidiary to Pavement Cost.

Const. Concrete C & G, Comb. Type 3 (8"), Median (See detail, sheet 9) Median shall be filled with friable fill material

P.V.I. Elev. = 1315.50 No V.C.

P.V.I. Elev. = 1314.50 No V.C.

Sta 2+64.00, 17.25' Rt. Install subdivision benchmark (Flat survey marker No. 8134-08 3" top diameter) in top of curb. Cost shall be incidental to L.F. Concrete C & G, Comb. Type 2 (3-5/8")

Valve Box Elev. = 1314.50

Construct Std. Type A Wheelchair Ramp w/ Detectable Warnings (both sides) (See detail, sheet 14)

Sta 2+03.00, 34' Rt. Install Std. 9" SNS Assembly "42nd St S" & Metro 9" SNS Assembly "42nd Ct S" as per City specs.

Valve Box Elev. = 1315.80

Construct 5' Wide Concrete Sidewalk 4"

Transition curb height from 0" to 3-5/8" in 3' (both sides).

Construct Concrete Pavement (VG) 7" (Reint) on Crushed Rock Base 5", Reinforced with Concrete Curb, Mono Edge (6-5/8"). Transition from Concrete Curb, Mono Edge (6-5/8") to Concrete C & G, Comb. Type 2 (3-5/8") in 5', through wheelchair ramp (both sides).

Subdivision Bench Marks

Street & Station	Location Description	Elevation
42nd St. S. 2+64.00, 17.25' Rt.	Adjacent to Fire Hydrant at E. End of E. Curb Return of 42nd St. S. and 42nd Ct. S. (Lots 1-10, Block A.)	

NOTE: ROLL TYPE CURB & GUTTER (TYPE 2) TO BE CONSTRUCTED ON THE PAVEMENT SHOWN ON THIS SHEET. TOP OF CURB ELEVATIONS ARE GIVEN FOR FULL HEIGHT CURB (TYPE 4).



BAUGHMAN COMPANY
 315 Ellis St.
 Wichita, KS 67211
 316-262-7271
 BaughmanCo.com

COLT MEADOWS ADD. Phase 1

42nd St. S.

STREET IMPROVEMENTS

PROJECT NUMBER: 22-04-E166

DESIGN: NBW DRAWN: TMS

DATE: March 21, 2023

SHEET OF **2 32**

File: E:\Projects\Colt Meadows Addition_21-01-P622\Engineering\Phase 1\Streets 22-04-E166\Streets.dwg