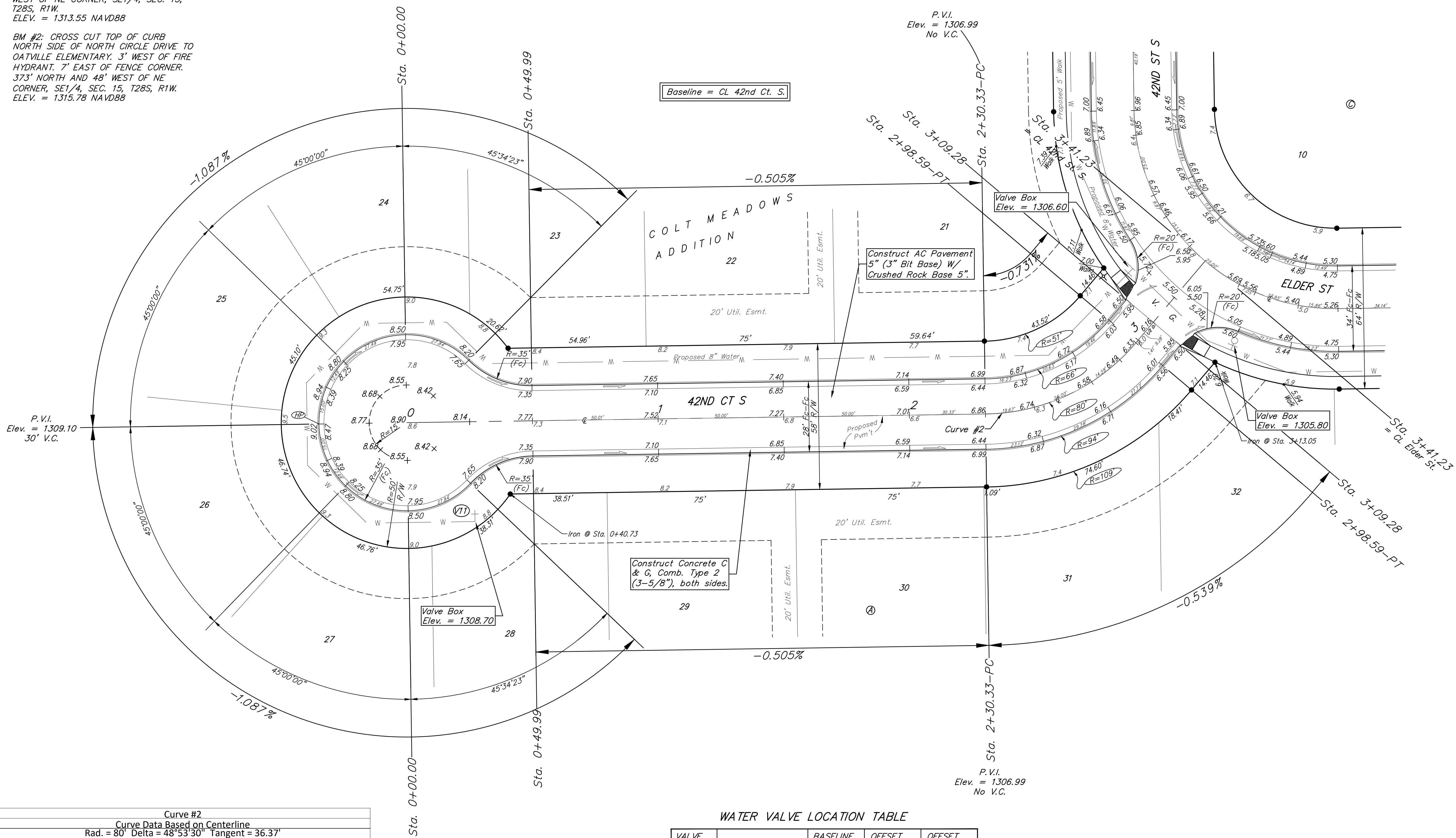
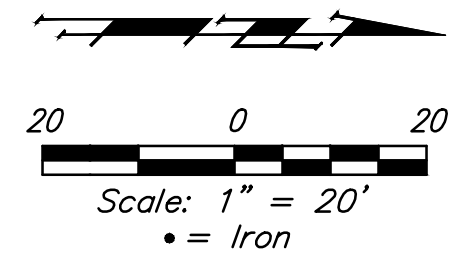


**BENCHMARKS:**  
 BM #1: TOP OF 1 1/2" ALUMINUM MKEC DISC SOUTH SIDE OF FIELD ENTRANCE. 35' WEST OF HOOVER ROAD. 17' NNE OF POWER POLE. 28' SOUTH AND 35' WEST OF NE CORNER, SE1/4, SEC. 15, T28S, R1W. ELEV. = 1313.55 NAVD88

BM #2: CROSS CUT TOP OF CURB NORTH SIDE OF NORTH CIRCLE DRIVE TO OATVILLE ELEMENTARY. 3' WEST OF FIRE HYDRANT. 7' EAST OF FENCE CORNER. 373' NORTH AND 48' WEST OF NE CORNER, SE1/4, SEC. 15, T28S, R1W. ELEV. = 1315.78 NAVD88



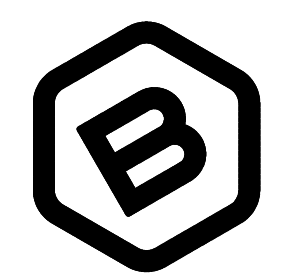
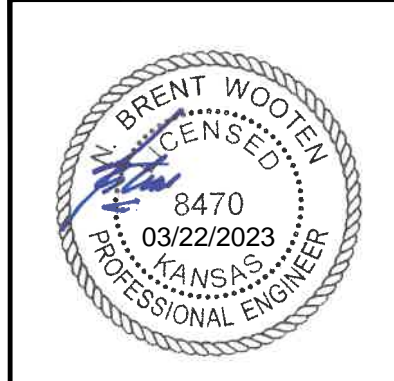
Curve #2					
Curve Data Based on Centerline					
Rad. = 80' Delta = 48°53'30" Tangent = 36.37'					
Arc = 68.26' L.C. = 66.21' Def./Ft. = 21.48769 Min.					
Face Chord Lengths	Arc	8' Left	8' Right	Defl.	Total Defl.
Station					
2+30.33	-	-	-	0°00'00"	0°00'00"
2+50.00	19.67'	14.23'	25.02'	7°02'40"	7°02'40"
2+75.00	25.00'	18.05'	31.75'	8°57'11"	15°59'51"
2+98.59	23.59'	17.04'	29.97'	8°26'54"	24°26'45"

**WATER VALVE LOCATION TABLE**

VALVE NUMBER	STREET	BASELINE STATION	OFFSET DISTANCE	OFFSET DIRECTION
V9	42nd Ct. S.	0+26.54	0+39.73	Rt.

Paving contractor will be responsible to operate all water valves on the project, in the presence of the inspector, to ensure accessibility to the valves, and that all valves (except blowoffs) are left in the "ON" position when the project is completed.

NOTE: ROLL TYPE CURB & GUTTER (TYPE 2) TO BE CONSTRUCTED ON THE PAVEMENT SHOWN ON THIS SHEET. TOP OF CURB ELEVATIONS ARE GIVEN FOR FULL HEIGHT CURB (TYPE 4).



**BAUGHMAN COMPANY**

315 Ellis St.  
 Wichita, KS 67211  
 316-262-7271  
 BaughmanCo.com

COLT MEADOWS ADD.  
 Phase 1

**42nd Ct. S.**

**Lots 21-32  
 Block A**

STREET IMPROVEMENTS

PROJECT NUMBER:  
 22-04-E166

DESIGN: NBW DRAWN: TMS

DATE: April 29, 2022

SHEET 7 OF 32

File: E:\Projects\Colt Meadows Addition\_21-01-P6221\Engineering\Phase 1\Streets 22-04-E166\Streets.dwg