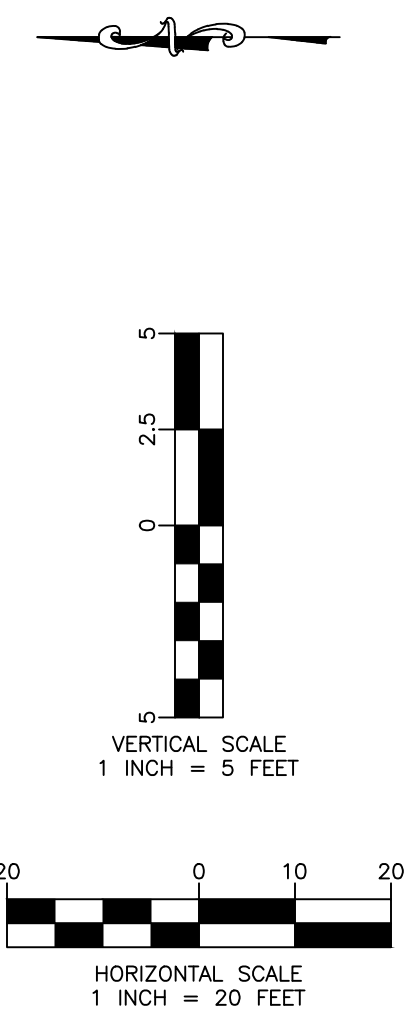
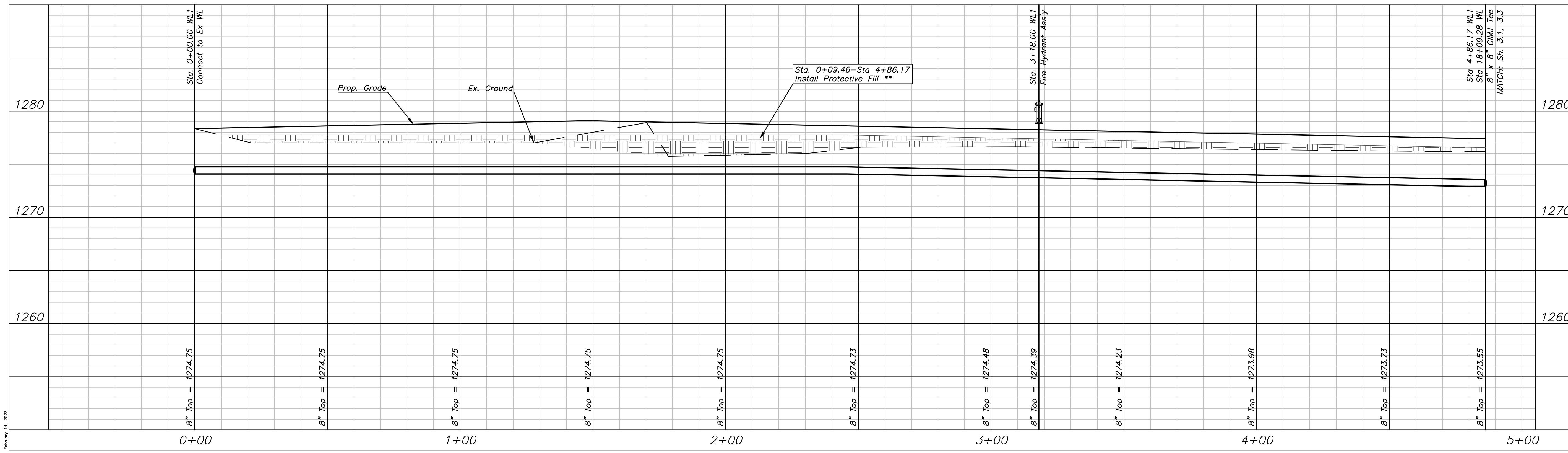
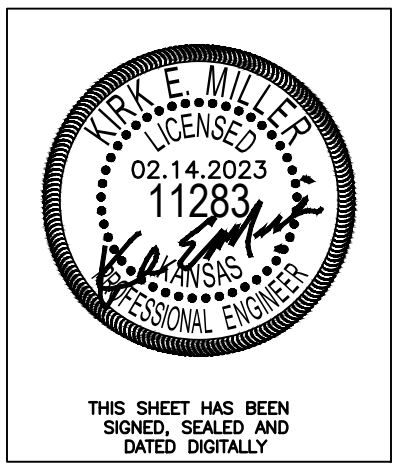


**\*\* NOTE:**  
Protective Fill to be installed where depth of pipe is < 3'.



Fox Run 2nd Addition  
WL1 Plan & Profile  
Wichita, Kansas

**KEMILLER**  
ENGINEERS & ARCHITECTS  
117 E. Lewis, Wichita, KS 67202 (316)264-0242

KEM PROJ. 21036	DATE 02.2023	SHEET 3.0
DESIGN KEM	DRAWN ZJS	

February 14, 2023