

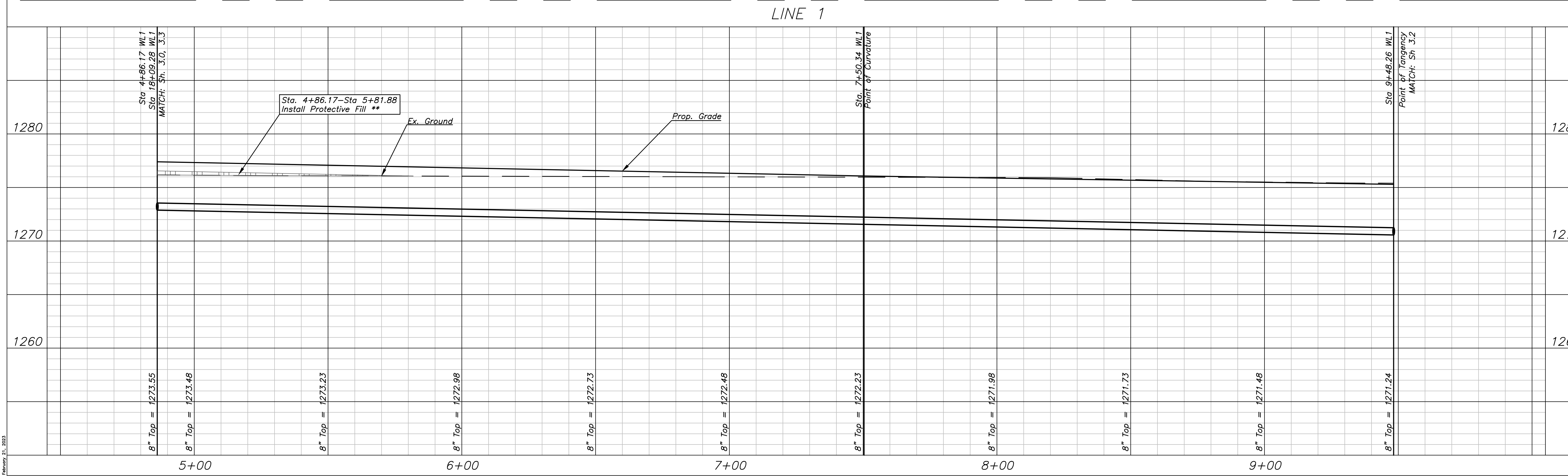
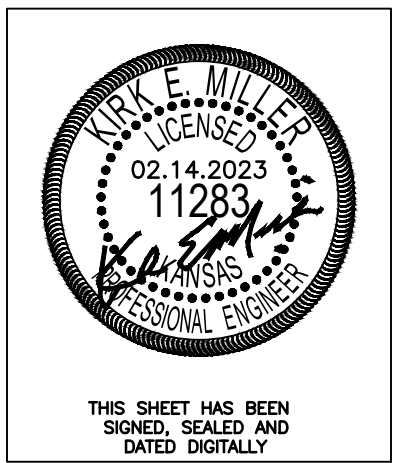
CURVE DATA TABLE
CURVE DATA BASED ON CENTERLINE OF WL RADIUS

$\Delta=90^{\circ}00'00''$ $T=126.00'$ $L=197.92'$ $R=126.00'$ $E=52.19'$

STATION	ARC LENGTH (8" OS RT.)	CH LENGTH (8" OS RT.)	DEFLECTION ANGLE	TOTAL DEFLECTION
7+50.34 PC				
7+75.00	24.66'	26.23'	05°36'25"	05°36'25"
8+00.00	25.00'	26.59'	05°41'04"	11°17'29"
8+25.00	25.00'	26.59'	05°41'04"	16°58'33"
8+50.00	25.00'	26.59'	05°41'04"	22°39'37"
8+75.00	25.00'	26.59'	05°41'04"	28°20'41"
9+00.00	25.00'	26.59'	05°41'04"	34°01'45"
9+25.00	25.00'	26.59'	05°41'04"	39°42'49"
9+48.26 PT	23.26'	24.74'	05°17'11"	45°00'00"

DEFLECTION PER FOOT = 13.64187551 MINUTES

**** NOTE:**
Protective Fill to be installed where depth of pipe < 3'.



Fox Run 2nd Addition
WL1 Plan & Profile
Wichita, Kansas

KEMILLER
ENGINEERS & ARCHITECTS

117 E. Lewis, Wichita, KS 67202 (316)264-0242

KEM PROJ. 21036	DATE 02.2023	SHEET 3.1
DESIGN KEM	DRAWN ZJS	

February 21, 2023