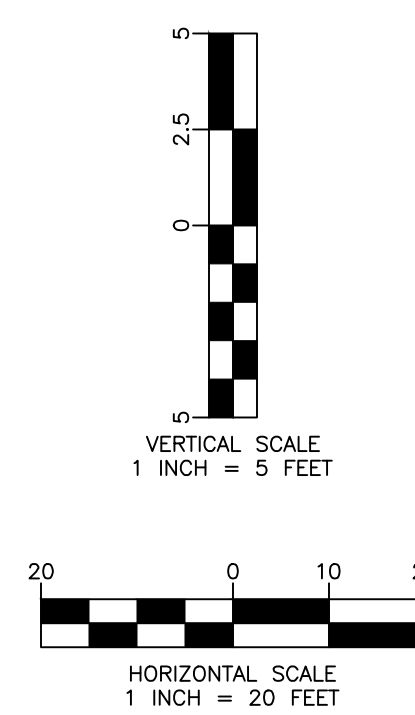
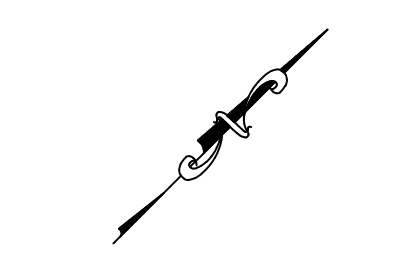
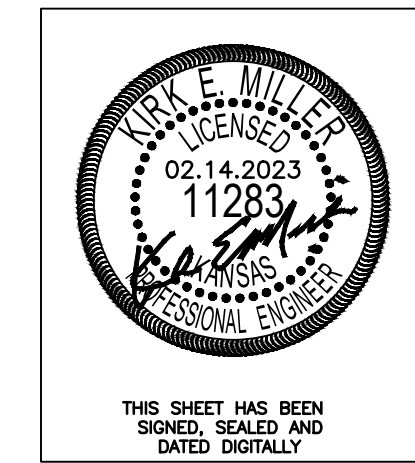
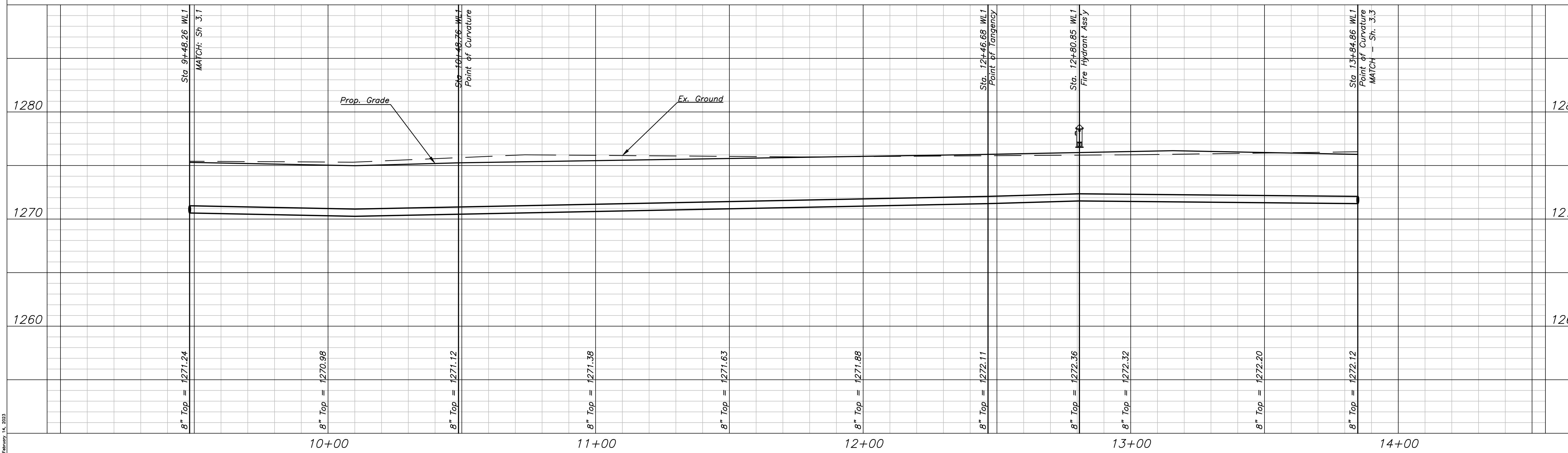


CURVE DATA TABLE
 CURVE DATA BASED ON CENTERLINE OF WL RADIUS
 $\Delta=90^{\circ}00'00''$ $T=126.00'$ $L=197.92'$ $R=126.00'$ $E=52.19'$

STATION	ARC LENGTH	CH LENGTH (8' OS RT.)	DEFLECTION ANGLE	TOTAL DEFLECTION
10+48.76 PC				
10+50.00	1.24'	1.32'	00°16'55"	00°16'55"
10+75.00	25.00'	26.59'	05°41'04"	05°57'59"
11+00.00	25.00'	26.59'	05°41'04"	11°39'03"
11+25.00	25.00'	26.59'	05°41'04"	17°20'07"
11+50.00	25.00'	26.59'	05°41'04"	23°01'11"
11+75.00	25.00'	26.59'	05°41'04"	28°42'15"
12+00.00	25.00'	26.59'	05°41'04"	34°23'19"
12+25.00	25.00'	26.59'	05°41'04"	40°04'23"
12+46.68 PT	21.68'	23.06'	04°55'46"	45°00'00"

DEFLECTION PER FOOT = 13.64187551 MINUTES



Fox Run 2nd Addition
 WL1 Plan & Profile
 Wichita, Kansas

KEMILLER
 ENGINEERS & ARCHITECTS
 117 E. Lewis, Wichita, KS 67202 (316)264-0242

KEM PROJ. 21036	DATE 02.2023	SHEET 3.2
DESIGN KEM	DRAWN ZJS	

February 14, 2023