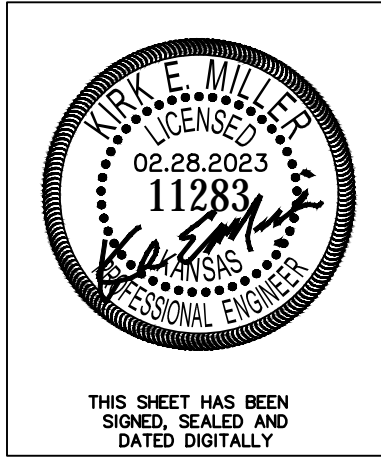
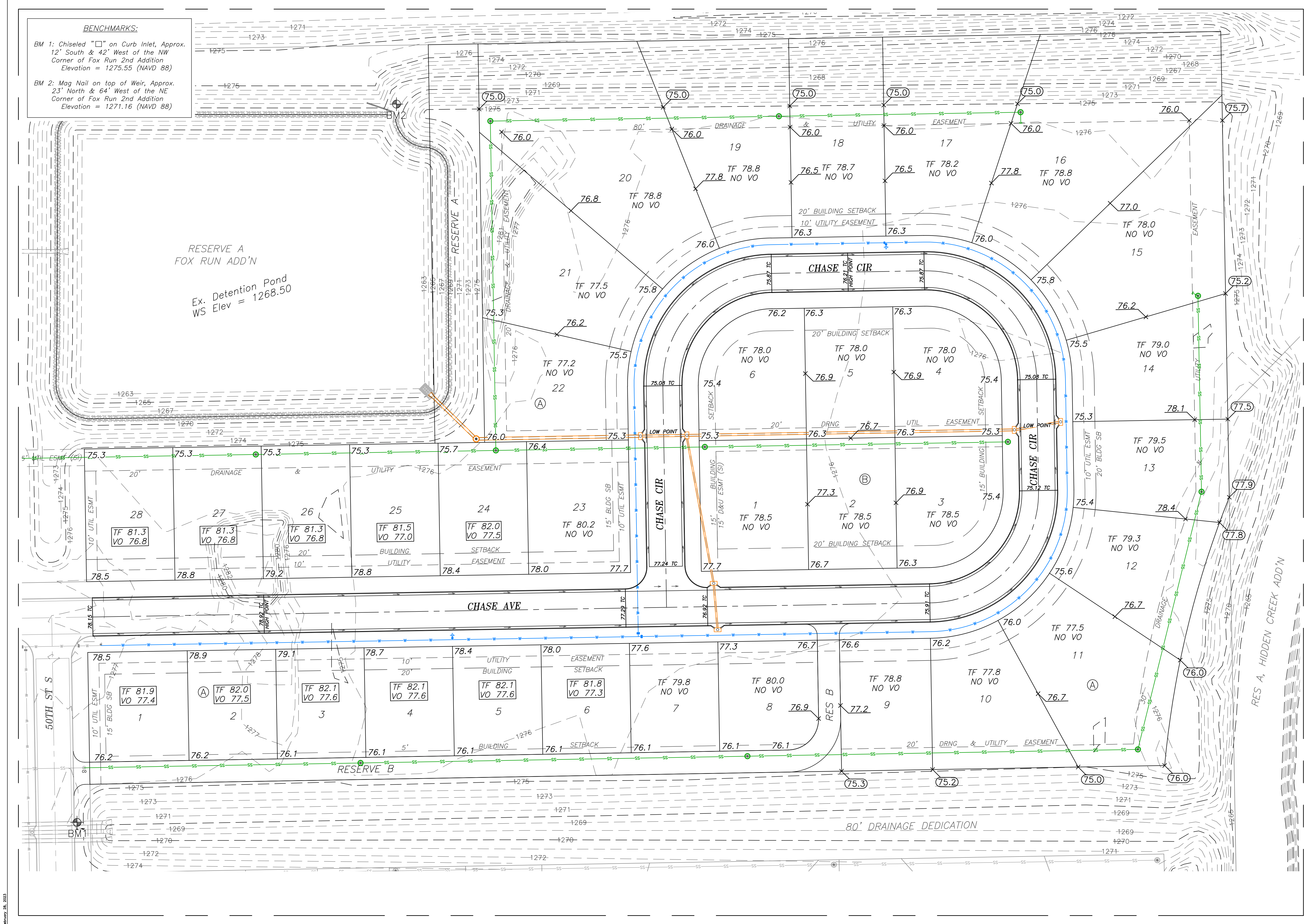


BENCHMARKS:

BM 1: Chiseled "□" on Curb Inlet, Approx.
12' South & 42' West of the NW
Corner of Fox Run 2nd Addition
Elevation = 1275.55 (NAVD 88)

BM 2: Mag Nail on top of Weir, Approx.
23' North & 64' West of the NE
Corner of Fox Run 2nd Addition
Elevation = 1271.16 (NAVD 88)



THIS SHEET HAS BEEN
SIGNED, SEALED AND
DATED DIGITALLY.



Fox Run 2nd Addition
Lot Grading Plan
Wichita, Kansas

KEMILLER ENGINEERING	
117 E. Lewis, Wichita, KS 67202 (316)264-0242	
KEM PROJ. 21036	DATE 02.2023
DESIGN KEM	DRAWN ZJS
SHEET 9.0	

February 28, 2023