

**BENCHMARKS:**

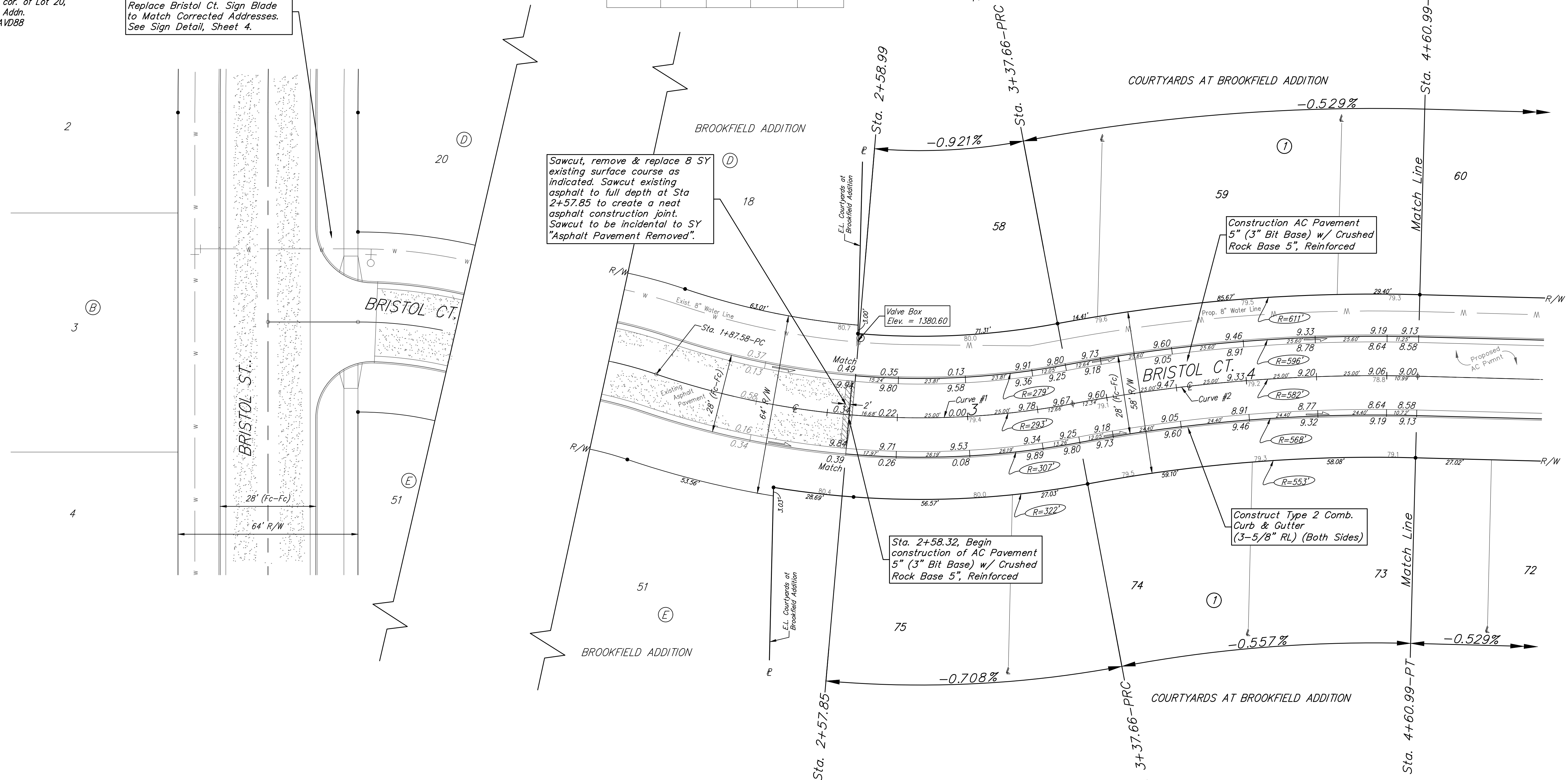
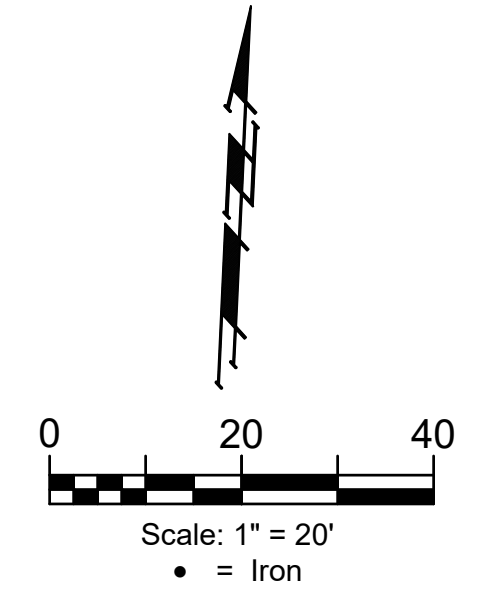
1. Cross cut in top of curb south side of Bristol Ct. Approx. 14.5' north of the NE cor. of Lot 51, Block E, Brookfield Addn. Elev. = 1380.34 NAVD88
2. City of Wichita Benchmark Disk in top of curb. East end of north curb return, Bristol and Bristol Ct, adjacent to fire hydrant Approx. 17.9' SE of the SE cor. of Lot 20, Block D, Brookfield Addn. Elev. = 1378.62 NAVD88

Contractor to Remove & Replace Bristol Ct. Sign Blade to Match Corrected Addresses. See Sign Detail, Sheet 4.

VALVE LOCATION TABLE

VALVE NUMBER	STREET	BASELINE STATION	OFFSET DISTANCE	OFFSET DIRECTION
1	Bristol Ct.	2+58.32	26'	Lt.

PVI = 1379.80  
No V.C.



Sawcut, remove & replace 8 SY existing surface course as indicated. Sawcut existing asphalt to full depth at Sta 2+57.85 to create a neat asphalt construction joint. Sawcut to be incidental to SY "Asphalt Pavement Removed".

Construction AC Pavement 5" (3" Bit Base) w/ Crushed Rock Base 5", Reinforced

Sta. 2+58.32, Begin construction of AC Pavement 5" (3" Bit Base) w/ Crushed Rock Base 5", Reinforced

Construct Type 2 Comb. Curb & Gutter (3-5/8" RL) (Both Sides)

Curve #1

Curve Data Based on Centerline  
Rad. = 293' Delta = 29°20'48" Tangent = 76.72'  
Arc = 150.08' L.C. = 148.44' Def./Ft. = 5.86620 Min.

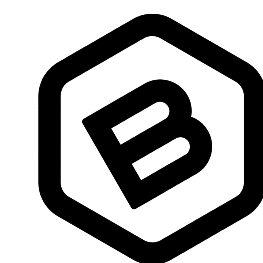
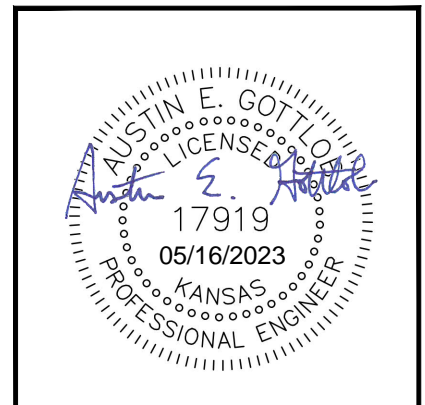
Station	Arc	Face Chord Lengths		Defl.	Total Defl.
		8' Left	8' Right		
1+87.58	-	-	-	0'00"00"	0'00"00"
2+00.00	12.42'	11.49'	13.35'	1'12'51"	1'12'51"
2+25.00	25.00'	23.11'	26.87'	2'26'40"	3'39'31"
2+50.00	25.00'	23.11'	26.87'	2'26'39"	6'06'10"
2+57.85	7.85'	7.26'	8.44'	0'46'03"	6'52'13"
2+58.99	1.14'	1.05'	1.23'	0'06'41"	6'58'54"
2+75.00	16.01'	14.81'	17.21'	1'33'55"	8'32'49"
3+00.00	25.00'	23.11'	26.87'	2'26'40"	10'59'29"
3+25.00	25.00'	23.11'	26.87'	2'26'39"	13'26'08"
3+37.66	12.66'	11.71'	13.61'	1'14'16"	14'40'24"

Curve #2

Curve Data Based on Centerline  
Rad. = 582' Delta = 12°08'28" Tangent = 61.90'  
Arc = 123.33' L.C. = 123.10' Def./Ft. = 2.95332 Min.

Station	Arc	Face Chord Lengths		Defl.	Total Defl.
		8' Left	8' Right		
3+37.66	-	-	-	0'00"00"	0'00"00"
3+50.00	12.34'	12.81'	11.87'	0'36'27"	0'36'27"
3+75.00	25.00'	25.94'	24.05'	1'13'50"	1'50'17"
4+00.00	25.00'	25.94'	24.05'	1'13'50"	3'04'07"
4+25.00	25.00'	25.94'	24.05'	1'13'50"	4'17'57"
4+50.00	25.00'	25.94'	24.05'	1'13'50"	5'31'47"
4+60.99	10.99'	11.40'	10.57'	0'32'27"	6'04'14"

Roll type curb & gutter to be constructed on the pavement on this sheet. Top of curb elevation are given for full height curb.



**BAUGHMAN COMPANY**

315 Ellis St.  
Wichita, KS 67211  
316-262-7271  
BaughmanCo.com

COURTYARDS AT BROOKFIELD ADDITION PHASE II

**BRISTOL COURT**

Sta. 2+58.32 to Sta. 4+60.99  
Street Paving Improvements

PROJECT NUMBER:  
472-2023-085896

DESIGN: AEG DRAWN: JAK

DATE: Mar. 15, 2023

SHEET OF  
**5 22**