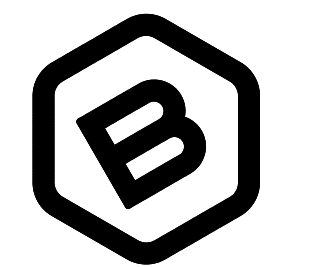
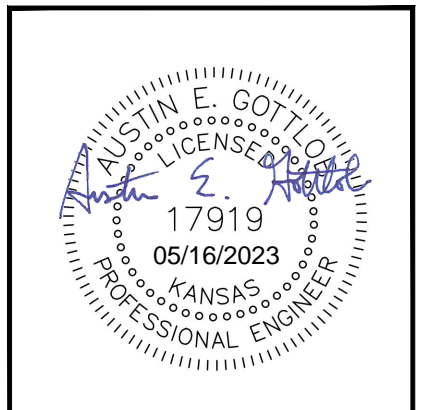
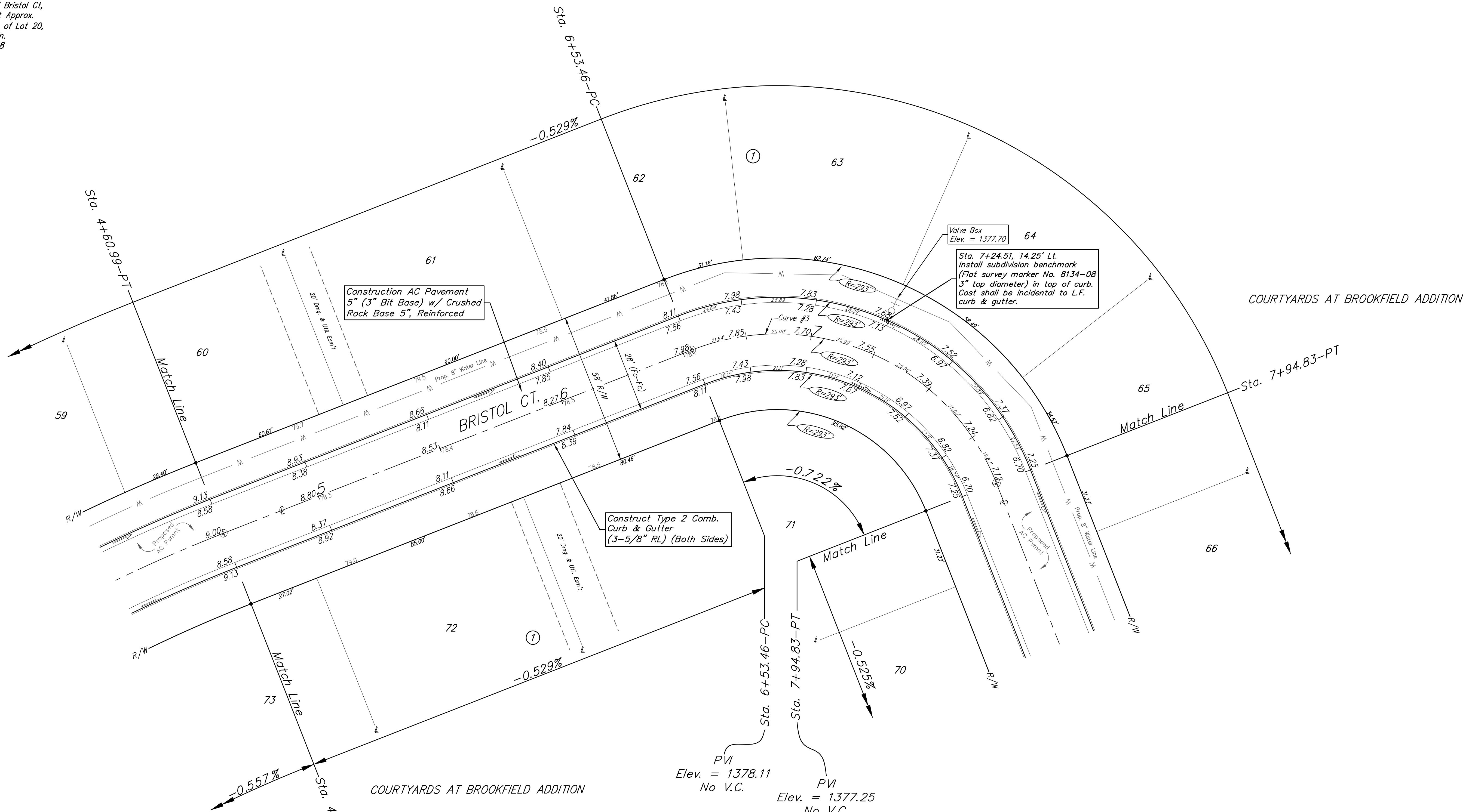
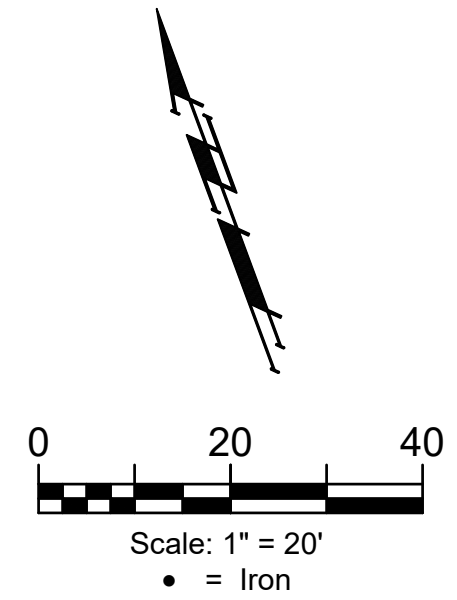


BENCHMARKS:

1. Cross cut in top of curb south side of Bristol Ct. Approx. 14.5' north of the NE cor. of Lot 51, Block E, Brookfield Addn. Elev. = 1380.34 NAVD88
2. City of Wichita Benchmark Disk in top of curb. East end of north curb return, Bristol and Bristol Ct, adjacent to fire hydrant Approx. 17.9' SE of the SE cor. of Lot 20, Block D, Brookfield Addn. Elev. = 1378.62 NAVD88



BAUGHMAN COMPANY
 315 Ellis St.
 Wichita, KS 67211
 316-262-7271
 BaughmanCo.com

COURTYARDS AT BROOKFIELD ADDITION
 PHASE II

BRISTOL COURT

Sta. 4+60.99 to Sta. 7+94.83
 Street Paving Improvements

PROJECT NUMBER:
 472-2023-085896

DESIGN: AEG DRAWN: JAK
 DATE: Mar. 15, 2023

SHEET OF
6 22

Curve #3
 Curve Data Based on Centerline
 Rad. = 90' Delta = 90°00'00" Tangent = 90.00'
 Arc = 141.37' L.C. = 127.28' Def./Ft. = 19.09882 Min.

Station	Arc	Face Chord Lengths		Defl.	Total Defl.
		8' Left	8' Right		
6+53.46	-	-	-	0°00'00"	0°00'00"
6+75.00	21.54'	26.74'	16.24'	6°51'23"	6°51'23"
7+00.00	25.00'	31.01'	18.83'	7°57'29"	14°48'52"
7+25.00	25.00'	31.01'	18.83'	7°57'28"	22°46'20"
7+50.00	25.00'	31.01'	18.83'	7°57'28"	30°43'48"
7+75.00	25.00'	31.01'	18.83'	7°57'28"	38°41'16"
7+94.83	19.83'	24.63'	14.95'	6°18'44"	45°00'00"

Subdivision Benchmarks

Street & Station	Location Description	Elevation
Bristol Ct. 7+24.51, 14.25' Lt.	Brass disc in top of curb adjacent to Fire Hydrant at the common lot lines of Lot 63 & 64, Blk 1, Courtyards at Brookfield Addition	

Roll type curb & gutter to be constructed on the pavement on this sheet.
 Top of curb elevation are given for full height curb.

File: E:\Projects\Brookfield Addition_16-04-P190\Engineering\Courtyards Ph 2 Wtr & Ph 3 Smt\STR_21-12-E077.dwg