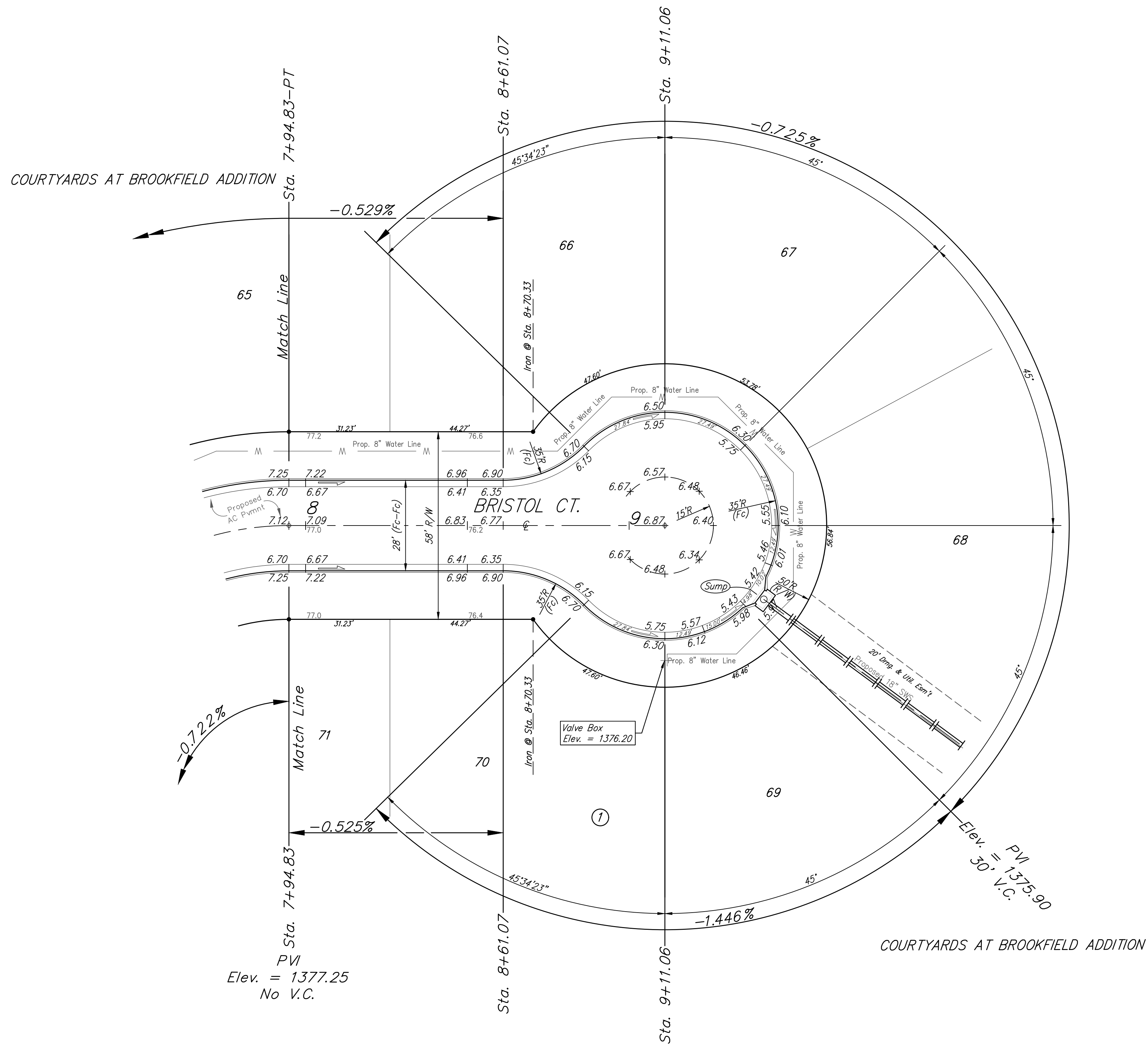
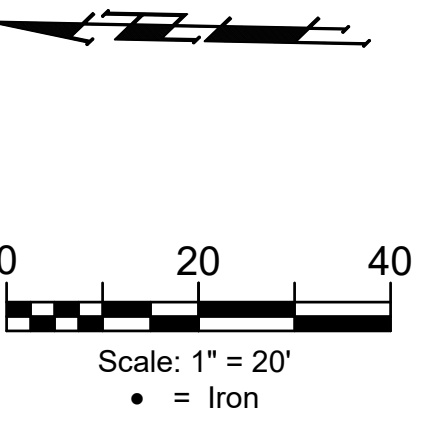


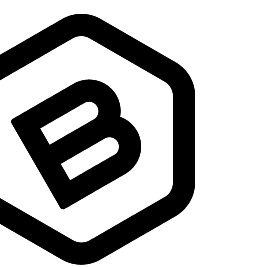
BENCHMARKS:

1. Cross cut in top of curb south side of Bristol Ct. Approx. 14.5' north of the NE cor. of Lot 51, Block E, Brookfield Addn. Elev. = 1380.34 NAVD88
2. City of Wichita Benchmark Disk in top of curb. East end of north curb return, Bristol and Bristol Ct, adjacent to fire hydrant Approx. 17.9' SE of the SE cor. of Lot 20, Block D, Brookfield Addn. Elev. = 1378.62 NAVD88

46



Roll type curb & gutter to be constructed on the pavement on this sheet.
Top of curb elevation are given for full height curb.



BAUGHMAN COMPANY

315 Ellis St.
Wichita, KS 67211
316-262-7271
BaughmanCo.com

COURTYARDS AT BROOKFIELD ADDITION
PHASE II

BRISTOL COURT

Sta. 7+94.83 to Sta. 9+11.06
Street Paving Improvements

PROJECT NUMBER:
472-2023-085896

DESIGN: AEG DRAWN: JAK

DATE: Mar. 15, 2023

SHEET 7 OF 22